



2025 South Dakota Hereford Directory





Ollerich
CATTLE COMPANY



BULLS FOR SALE PRIVATELY
...
HEIFER SALE, OCTOBER 2025

Ollerich
CATTLE COMPANY
clear lake, south dakota

RYAN, CRYSTAL, DEVON, KIRBEE + WESTON

[CONTACT RYAN: 605/759-6405]

RAUSCH HEREFORDS

EST. 1946

PRESIDENT'S DAY

MONDAY, FEBRUARY 17, 2025

67th Annual Bull & Female Sale

175 BULLS & 300 HEIFERS SELL

AT THE RANCH NEAR HOVEN, SD



H TIMELESS 2236 ET

HOMOZYGOUS POLLED | 44369841

CED	BW	WW	YW	MM	REA	MARB	BMI	CHB
-0.5	5.3	91	147	37	.61	.28	443	150



CHURCHILL W4 SHERMAN 2157K ET

HOMOZYGOUS POLLED | 44378036

CED	BW	WW	YW	MM	REA	MARB	BMI	CHB
0.6	1.9	65	106	25	1.08	.44	493	191



R IDENTITY 6112

POLLED | 44360793

CED	BW	WW	YW	MM	REA	MARB	BMI	CHB
7.6	0.4	61	93	34	.40	.37	466	169



KEST 14D 9359 SPONGIE J83

POLLED | 44302801

CED	BW	WW	YW	MM	REA	MARB	BMI	CHB
-2.2	4.3	68	114	34	.93	.37	471	144

RAUSCHHEREFORDS.COM JACOB: 605.769.0552 PETER: 605.281.0471 SHANNON: 605.769.0203

FERTILITY • LONGEVITY • CONSISTENCY • PERFORMANCE

77th Edition
**2025 South Dakota
Hereford Directory**

ISSUE DATE: DEC. 17, 2024

Published Annually By
**South Dakota
Hereford Association**

Taryn Reed, SDHA Manager
PO Box 225
Wessington Springs, SD 57382

PRODUCTION BY:
Hereford America • 605/866-4495 • www.HerefordAmerica.com
Design & Production: Robin Engel and Jill Hotchkiss

Cover photo by Colin Hoffman, Leola, SD
"Walking Rights"

KNIPPLING HEREFORD

Online Bull & Female Sale

Bidding Closes

SUN., JANUARY 26, 2025

at 2 p.m. CST

SELLING 66 BULLS

PLUS 210 F-1 Baldy Replacement Heifers

Racehorse style on www.TheLivestockLink.com

See websites for instructions.

Livestock
Link
www.TheLivestockLink.com



Bulls can be viewed at any time.

See videos on www.knipplinghereford.com or www.TheLivestockLink.com



KNIPPLING HEREFORD

Randy Knippling: 605/293-3493 - 605/680-3185 (c)

Garin Haak: 605/293-3289 - 605/680-4637 (c)

Catalogs upon request or on: WWW.KNIPPLINGHEREFORD.COM

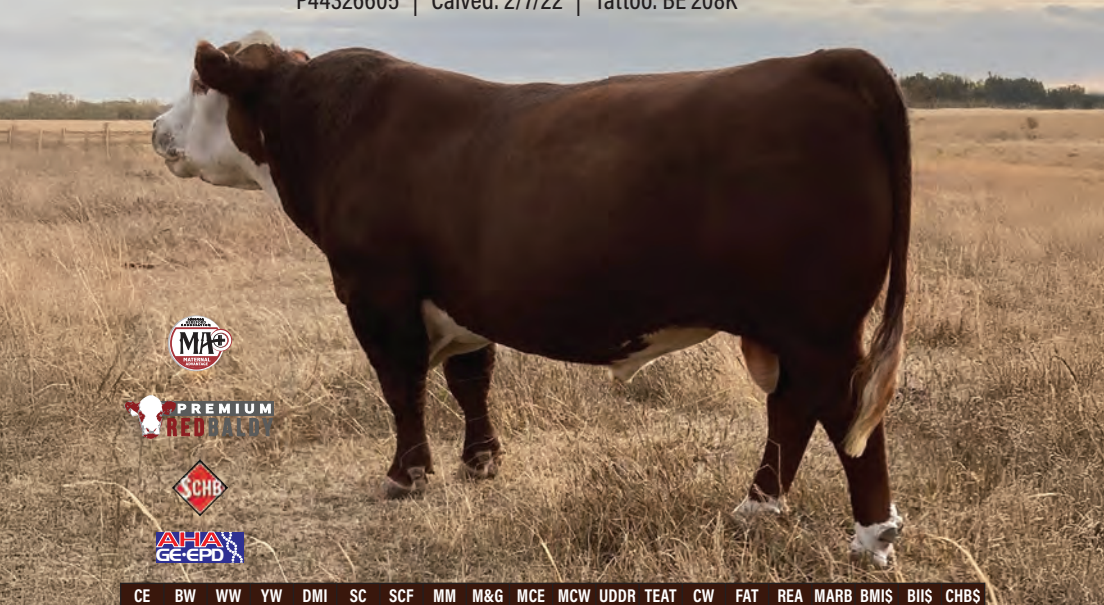
A Singular Focus

Since 1975, our mission has remained the same...



FINK F158 KUDOS 208K {DLF,HYF,IEF,MSUDF,MDF,DBF}

P44326605 | Calved: 2/7/22 | Tattoo: BE 208K



CE	BW	WW	YW	DMI	SC	SCF	MM	M&G	MCE	MCW	UDDR	TEAT	CW	FAT	REA	MARB	BMS	BIIS	CHBS
5.6	1.2	59	102	0.2	1.7	19.5	20	50	1.2	99	1.50	1.40	91	0.053	0.66	0.45	445	545	182

EFBEEF BR VALIDATED B413 {SOD}{CHB}{DLF,HYF,IEF,MSUDF,MDF,DBF}

SHF FORESIGHT B413 F158 {CHB}{DLF,HYF,IEF,MDF,DBF}

P43894968

SHF GERBER R117 Y200 {DLF,HYF,IEF}

JDH VICTOR 719T 33Z ET {SOD}{CHB}{DLF,HYF,IEF,MSUDF,DBF}

FINK 33Z KEY 909G {DLF,HYF,IEF,MSUDF,MDF,DBF}

P44005637

FINK 205A KEY 716E {DLF,HYF,IEF,MDF,DBF}

... to produce quality Hereford seedstock
for the commercial cattle industry.



Mike C. Fink
43610 SD Hwy 42 • P.O. Box 184
Bridgewater, SD 57319
Home 605-729-2515
Mike's Cell 605-999-2075
Email: finklaw@unitelsd.com

<https://sites.google.com/site/finkpolledherefords/home>

FINK
POLLED HEREFORDS

High quality Hereford bulls
for sale by private treaty.



2025 South Dakota Hereford Association Board



Pictured left to right, Allie Jensen, finance manager; Jeff Gerlach, president; Colin Hoffman; Michael Blume; Jacob Rausch, vice president; Joe Brandt; Boyd Dvorak; Cody Williams; and Taryn Reed, manager.

Taryn Reed, SDHA Manager
PO Box 225
Wessington Springs, SD 57382

641-430-7787
manager@southdakotaherefords.org
www.SouthDakotaHerefords.org

2025 South Dakota Junior Hereford Association Board

President Chance Blum
President Elect Ireland Mcareavey
Secretary Jayna Blume
Treasurer Hollis Fawcett
Reporter Natalie Marshall
Director Kane Grace
Director Tanner Grupe
Director Riley Rasmussen

Queen Lilly Blume
Princess Brooklyn Marshall
Sweetheart Ellie Olawsky

Advisors
Lane Peterson (605) 870-6220
Emily Peterson (515) 443-4465
Calah Covey (605) 840-0951
Lindsey Wolles (605) 496-2487
Dawn Covey (605) 840-1334

Reach the South Dakota Junior Hereford Advisors at
SDJRHereford@gmail.com

HANSON

POLLED HEREFORDS



[HPH the little cow herd that could]



"Molly"
BRIGHT MISS LILLIAN 2126 ET
 owned w/ Payton Farmer / Circle F Cattle Co.



Molly's first calf
CFCC HPH FENTY 2126L
 owned w/ Payton Farmer / Circle F Cattle Co. / Kathryn Coleman



HPH 756 LADY LUCK 5480J
 owned by Lauren Jones / Wildcat Cattle Co.



HPH 756 LADY LUCK 5480J
[2 time cow-calf pair banner hanger]



SHR DIANA MCKEE 3088ET
 shown by Adalynn Blankenship



OG CFCC VALERIE 2304 ET
 owned with Charlee Holt

CATTLE
 AVAILABLE
PRIVATELY



HANSON
 POLLED HEREFORDS

CONDE, SOUTH DAKOTA

SHERRYHANSON
 605/382-7477

Upcoming Events

February 5, 2025
Black Hills Stock Show
Hereford Show & Sale
Rapid City, SD

February 12, 2025
South Dakota Hereford
State Show & Sale
Watertown, SD

February 14, 2025
Hereford Influence
Feeder Calf Sale
Mitchell, SD

June 7-8, 2025
South Dakota Junior
Hereford Field Day

Sioux Empire Fairgrounds,
Sioux Falls, SD

July 12-18, 2025
Junior National
Hereford Expo
Louisville, KY

July 2025
Summer Spotlight Show
Huron, SD

Date to be announced:
Jr. Special & Futurity
Shows

August 19-23, 2025
DakotaFest Ribeye
Sandwich Booth
Mitchell, SD

August 28, 2025
Hereford Open Show
South Dakota State Fair
Huron, SD

November 7, 2025
SDHA Annual Meeting
& Banquet
Brookings, SD

November 8, 2025
SD Excellence Sale
Brookings, SD

RAINBOW Herefords

Selling in
SD Excellence Sale,
Cornhusker Classic,
GoPher the Purple &
Black Hills Stock Show

Cattle For Sale
at the Farm



New Herd Sires

Daybreak 247
JDH 73F 21G Prominent 5K

Other Herd Sires

ABC Ribeye Buster 414
RH Lockwood 025



Vickie & Craig

— In loving memory of Craig Jatton —

RAINBOW HEREFORDS

30734 456th Ave., Volin, SD 57072

Vickie Mensch-Geuther 605-661-3421
Cody Geuther 605-670-1807



Also selling registered
Quarter Horses...



... and Corgis.

Thorstenson HEREFORD RANCH



NJW 21C 6589 IGNITE 97G ET
{DLF,HYF,IEF,MSUDF,MDF,DBF} • P44057386
BW 0.8 WW 53 YW 82 M 27 M&G 54
UDDR 1.20 TEAT 1.30 REA .37 MARB .07 CHB\$ 104

Production Sale
FRI., APRIL 11, 2025
1:00 (CDT) - At the Ranch
Selby, South Dakota

Selling

85 Hereford & Angus Bulls
30 Registered
Hereford Heifers
& 30 Angus Heifers

DVAuction
Broadcasting Real Time Auctions

Thorstenson

HEREFORD RANCH

Bill Thorstenson: 605-845-6108
6804 Overholzer Ave., Selby, SD 57472
Darin Thorstenson: 605-321-6416
30491 131st St., Selby, SD 57472 (ranch)
wpthorstenson@venturecomm.net
www.thorstensonherefordranch.com

2025 South Dakota Hereford Directory



KCF BENNETT EAGLE H550
{CHB,DLF,HYF,IEF,MSUDF,MDF,DBF}
Homo Polled - P44249999
15 Trait Leader
BW 0.5 WW 81 YW 128 M 35 M&G 76
UDDR 1.30 TEAT 1.30 REA .53 MARB .61 CHB\$ 174



BAR STAR EMBELLISH 020 ET
{DLF,HYF,IEF,MSUDF,MDF,DBF} • P44163503
BW 4.2 WW 64 YW 106 M 35 M&G 67
UDDR 1.20 TEAT 1.20 REA .36 MARB .27 CHB\$ 148

THE **HUSTLE** BRINGS THE **DOLLAR.**
 THE **EXPERIENCE** BRINGS THE **KNOWLEDGE.**
 THE **PERSISTENCE** BRINGS **SUCCESS.**



DAVISSON FAMILY

RESERVE CHAMPION HEREFORD STEER
 IOWA STATE FAIR



STIEFVATER FAMILY

CHAMPION HEREFORD STEER
 SD STATE FAIR



WAGNER FAMILY

RESERVE CHAMPION HEREFORD STEER
 MARYLAND STATE FAIR



KOHL'S FAMILY

MANY TIME CHAMPION

BULLS FOR SALE PRIVATE TREATY
 HEIFERS/STEERS FOR SALE PRIVATE
 TREATY & CONSIGNMENT SALES



Stenberg Herefords

COLMAN, SOUTH DAKOTA

CODY WILLIAMS: 605.695.0931 | LINDSEY WOLLES: 605.496.2487

DAVE STENBERG: 605.530.6002

S T E N B E R G H E R F S . C O M

ONLINE BULL SALE

Hosted by
The Livestock Link

Saturday,
Feb. 22, 2025

Offering **2-Year-Old Polled Hereford Bulls**

Videos available on www.HillsviewHerefords.com
and www.TheLivestockLink.com



— SEMEN FOR SALE —

AF B G16 Genesis 244 ET

BW 2.8, WW 65, YW 115, SC 1.2, Milk 29, M&G 62, MCE 3.6,
Udder 1.40, Teat 1.30, REA .72, Marb .41, CHB \$187

Semen interests owned with Jill Hotchkiss, Bayers Hereford Ranch; and Aaron Friedt.

Also offering

All of our Registered Polled
Hereford Yearling Heifers

for sale this year

— OTHER HERD SIRES —

SHF Independence G003 J034 ET P44228209

SHF Jalapeno G003 J044 ET P44228219

SHF Fuse Box C36 F078 ET P43894891

SHF Juicer F158 J107 P44228278

Call or e-mail for catalog

HILLSVIEW FARMS

Darwin & Cindy Aman

32824 119th St., Eureka, SD 57437

Cindy: 605-377-3441 • dcaman@valleytel.net

www.HillsviewHerefords.com

Introducing

K Houston 3157K • P44512477

Sire: SHF HOUSTON D287 H086 • Dam: K LADY WHITMORE 962G
BW 3.0 • WW 70 • YW 112 • MM 29 • MG 64 • REA .74 • MARB .19 • CHB\$ 147

Yearling and Two-Year-Old sons of Cuda (907G) and Historic for sale

The cow herd is Extra Deep and Wrangler bloodlines
with about 25% of the herd being Dams of Distinction

Breeding Stock for Sale Private Treaty



BEHM 504C Global 907G "Golden Cuda"

Videos
Available
in January

JOHNSON HEREFORD FARM

— Raising easy keeping cattle for over 100 years —

Jack and Lynne Johnson

2165 240th St., Milford, Iowa 51351 • 712-260-3650 or 712-330-7470

DOING A GREAT JOB!

Anchor 4OK

P44420245

Come see his offspring.
Light birthweight bull.

Red eyes, smooth
shouldered, long with a
heavy hind quarter.

• Homozygous Polled •
BW 2.7 WW 46 YW 72
MM 22 MG 45 REA 0.34
Marb 0.07 CHB\$ 105

*Bulls and females
always for sale!*



JB Ranch



Bev Beeson

85663 579th Ave.,
Wayne, NE 68787

402-375-9027

jack.bev.beeson@gmail.com

jbranch.net

RST FINAL PRINT 0016



Reg. #: 44178105 — CED **6.9** BW **-0.8** WW **85** YW **127** DMI **0.1** SCF **22.7**
MM **42** UDDER **1.7** TEAT **1.7** REA **.78** MARB **.19** BMI\$ **494** CHB\$ **164**

Final Print is producing sons and daughters that are topping sales across the country. A bull you can use on cows & heifers with WW and YW EPDs in the top 1% of the breed.

His first daughters in production are doing a great job with high quality udders as evidenced by his Milk, M&G, Udder and Teat EPDs — ALL in the top 1% of the breed.

His progeny and service will be a feature of our September 27, 2025 Female Auction.

Annual Bulls & Breds Sale February 15, 2025 at Delaney Herefords

Female Auction September 27, 2025

— Both held with Delaney Herefords —

ATKINS
HEREFORDS

Now located 4 1/2 miles west and 1/4 south of Exit #73 on I-29 just south of Sioux Falls.

Pete & Laura Atkins
27132 SD Hwy 17 • Tea, SD 57064
605/351-9847 • petea15@gmail.com
www.atkinsherefords.com



HEREFORD + ANGUS
BULLS FOR SALE

I-29 BULL RUN
SATURDAY - MARCH 8, 2025
SIOUX EMPIRE FAIRGROUNDS - SIOUX FALLS, SD



ask about our
MULTI-YEAR BREEDING SEASON GUARANTEE
CALF BUYBACK OPTIONS
FROZEN GENETIC OPPORTUNITIES

SECTION 16
CATTLE COMPANY

ERIK SCOTT:
605.214.1332

CRAIG BROUGHTON:
605.951.7595

KADE SCOTT:
605.214.5565

ADDRESS:
47881 287TH ST. CANTON, SD 57013

EMAIL:
SECTION16CATTLECO@LIVE.COM
FIND US ON FACEBOOK + INSTAGRAM



- MORE INFO -
WWW.SECTION16CATTLECO.COM

4
/
0

BLUME RANCH

· Redfield, South Dakota ·

**REGISTERED HEREFORD BULLS, FEMALES
+ COMMERCIAL ANGUS BRED HEIFERS**
AVAILABLE FOR PRIVATE TREATY SALE

FOR MORE INFORMATION

17137 US HWY 281 REDFIELD, SD 57469
IVAN BLUME [605] 460-2665 | BRUCE BLUME [605] 460-0897



HOME OF BAR JZ ON DEMAND



J BAR
Z JZ
RANCHES
GENEX

HOFFMAN RANCH
Bringing Best Balance

76th Annual Sale • Tuesday, February 18, 2025

2-Year-Old Bulls • Bred Heifers • Heifer Calves

J
Z
BAR
JZ
RANCHES

Don & Peg Silverberg
Seth & Bridget Silverberg
Holabird, SD
605/870-2169 Seth
605/870-1302 Don
605/852-2966 Office
cattle@barjz.com
www.barjz.com




G p r o m o

your

dedicated. creative. *professional.*

- LIVESTOCK + FAMILY PHOTOGRAPHER ✓
- GRAPHIC DESIGNER ✓
- SOCIAL MEDIA MANAGER ✓
- BRANDING PROFESSIONAL ✓



*Let's work together
before + after
the cows come home*

Robin Kleine Struck, Owner

G.O. PROMO, LLC • Girlfriend Original Promotions, LLC

4304 W Pennsylvania Circle • Sioux Falls, SD 57107

PH: 219/306-0323 • E: gopromollc@gmail.com

www.girlfriendoriginal.com

L BAR W

CATTLE COMPANY

9TH ANNUAL PRODUCTION SALE

MARCH 12, 2025



AT THE RANCH | ABSAROKEE, MT



*Selling horned yearling and age advantaged
Hereford bulls, select females & commercial heifers.*



LW 3006 MISS ADVANCE 720E ET
REG: 43826850

CL 1 DOMINETTE 7209E
REG: 43864503

LW 7131 DOMINO 075H ET
REG: 44147154

HORNED HEREFORDS

*raised and developed
for LONGEVITY, FERTILITY and PREDICTABILITY*

**For semen sales, catalog request and more
information www.LBarW.com**  

Carl & Denise Loyning Mike & Jeannette Walen
(406) 425-2252 (c) (406) 425-2484 (c) lbarwherefords@gmail.com

scan me





PETERSON
CATTLE COMPANY

CH HIGH ROLLER 756 ET
X LP MISS LEADER 808



LANE, EMILY + AVERY PETERSON
HIGHMORE, SOUTH DAKOTA

LANE: 605/870-6220
EMILY: 515/443-4465



FIND US ON FACEBOOK OR INSTAGRAM!

UNIQUELY ROOTED
...
BOLDLY PROGRESSIVE

CHEZ/PUGH/HARA LOGIC 8815F ET
X LP MISS LEADER 808



CH HIGH ROLLER 756 ET
X LP MISS LEADER 808



2021 Sioux Empire Fair – Grand Champion Hereford Bull
 2021 SD State Fair – Grand Champion Hereford Bull
 2021 SD State Fair – Supreme Champion Bull over all Breeds
 2021 American Royal – Hereford Class Winner
 2021 American Royal – Hereford Reserve Division Champion



MPH 2103 EASTWOOD G3 ET Reg: 44053546 • DOB: 01/10/19

CED -2.8 BW 4.0 WW 53 YW 92 MM 32 M&G 59 MCE 1.6 REA .63 Marb .17 CHB \$137

Sire: \$600,000 National Champion, C Miles McKee 2103 ET

Dam: \$175,000 National Champion, Star KKH SSF Olivia 15U ET

FOR EASTWOOD & RAMPAGE SEMEN/CERTIFICATES, CONTACT:

Jim Reed, Reed Enterprises • 660-527-3507 (h) • 417-860-3102 (c) • reedent@iland.net

UNSEXED SEMEN \$20/STRAW • SEXED SEMEN \$50/STRAW • CERTIFICATES \$75



MPH Z311 RAMPAGE D1 Reg: 43696424 • DOB: 01/7/16

CED 6.3 BW -0.2 WW 60 YW 95 MM 35 M&G 65 MCE 8.5 REA .51 Marb .41 CHB \$162

Sire: KCF Bennett Encore Z311 • Dam: RHF 0124 Rosie 3023A (DOD)

**GENETICS
 AVAILABLE
 PRIVATE
 TREATY**



For more information, contact:
 Brian Mettler 605-951-3007 (c)
 Brooklyn Mettler 605-951-6582 (c)
 Ron Mettler 605-387-2841
 28223 431st Ave, Menno, SD 57045
 bmettler@gwtc.net
 www.mettlerpolledherefords.com
 2025 South Dakota Hereford Directory

Est. 1914

GANT HEREFORDS

Selling

2-Year-Old Hereford Bulls
Hereford Heifers Bred Black

Date and Location

Friday, February 28, 2025 • 1
PM Geddes, SD & Online

Contacts

Mark Gant 605-680-1540
Jason Gant 605-321-1596

Sire Groups

RV Valor
NJW Decorby
R Leader
RV 4013 Tested
Gant Homestead



Gant Tested



Gant Valor

www.GantHerefords.com



Unleash the Power of Us.

Focus Marketing Group believes that the best marketing campaigns are created when the marketing agency and the customer work **together as a team**. This is why we focus on creating a strong team dynamic with our customers. We want to get to know your operation inside and out, so that we can create marketing efforts that are tailored to your specific needs. We want to be your partner in success; **when you succeed, we succeed.**

OUR TEAM



Kyla Fawcett
785-213-5435



Amanda Holt
402-380-8401



Kensi Meredith
385-455-9495



Alexis Rufford
405-747-0454



Magen Tol
320-305-3545



Alexis Radwin
571-606-4090



OFFERING *Photography, Videography, Graphic Design, and Web Design and Management, Social Media Management*

office@focusmarketinggroup.net

Fawcett's Elm Creek Ranch

Annual Production Sale
February 10th, 2025 • February 9th, 2026
at the ranch • Ree Heights, South Dakota



Fall Female Sale

October 11th, 2025 • October 10th, 2026
online sale

Fawcett's
ELMCREEKRANCH
Ree Heights, South Dakota

www.fawcettselmcreekranch.com

Dan Fawcett 605-870-6172 • Weston Kusser 604-478-0077

2025 South Dakota Hereford Directory



Largest privately-owned Hereford newspaper in North America.
Serving Registered and Commercial Hereford breeders since 1996.

HEREFORD *America*

It all started with South Dakota!

We are looking forward to another great year!



- Interesting Hereford Articles
 - Hereford News
- Sale and Show Coverage
 - Unique Perspective
 - Social Media
- 7 Issues Per Year — Jan., Feb., Mar., Apr./May, Sept., Oct., Nov./Dec.
- Ad and Editorial Deadlines
5th of Preceding Month

Jill and Marc Hotchkiss

13823 Beaver Creek Place • Reva, SD 57651
605/866-4495 (office) • 605/490-1409 (cell)

  [**www.herefordamerica.com**](http://www.herefordamerica.com)



Private Treaty Sales



2024 HERD SIRES

- YV Designer 57G
- YV Silver Creek 26J
- SR Turning Point 1437E
- SR Dominator 1449G
- BHF 4053 Highroller 104J
- BCC Harold 152J
- Bar Star Connery 007

Colin & Mary Beth & Miles HOFFMAN

11341 357th Ave. • Leola, SD 57456 • (605) 216-7506 or (605) 277-5048

www.hoffmanherefords.com

CATTLE AVAILABLE

BULLS PRIVATE TREATY || WATERTOWN FARM SHOW || BROOKINGS EXCELLENCE SALE



BLACKTOP ENDURE 1714 • REG # 44270204



JDH 9Y LEADER 6964 65F ET • REG # 43950900



ECR CHEZ LI8 SENSATION 7076 ET • REG # 43859746

OTHER SIRES:

NJW 98S RI17 RIBEYE 88X ET • REG # 43094146
NJW 84B 4040 FORTIFIED 238F • REG # 43943448
UPS ENTICE 9365 ET • REG # 44058137
JDH 11B STUD 3134 63E • REG # 43782967

LAIBLE HEREFORDS

43703 SD Hwy 34, Howard, SD 57349
John and Wanda Laible 605-579-0072
Landon, Abby, Whitley & Weston Laible
605-579-0148

Field Representative for the Midwest Region #3
Kansas, Minnesota, Nebraska, and South Dakota

Aaron Friedt

701-590-9597, afriedt@hereford.org

P.O. Box 293, Mott, ND 58646



Give me a call if you are interested in:

- *Placing an ad in the Hereford World/Baldy Advantage*
- *Creative Services projects including sale catalogs, postcards, brochures and flyers*
- *Assistance in marketing your Hereford seedstock and commercial females*
- *Buying or selling Hereford-influenced feeder calves*
- *Marketing cattle through the CHB program*



11500 N. Ambassador Dr., Suite 410
Kansas City, MO 64153
816-842-3757 / www.hereford.org

SHOTS BY LAUREN ELYSE

est. 2019

PORTRAIT | LIVESTOCK
PROMOTIONAL | DESIGN

Ready to get started?

*Lauren Weishaar, Owner • Ph: (701) 690-7816 • E: shotsbylaurenelyse@outlook.com
SHOTSBYLAURENELYSE@MYPXIESET.COM*





Bischoffs

**GERALD & JANELLE: GARRET, PEYTON
AND COOPER; MATT & HEATHER,
PARKER, REAGAN & EASTON**

Peskeys

MIKE & LORI, BLAKE & KYLA

Huron, South Dakota

DJF MIAMI SPICE 1L ET "KARMA"
RESERVE CHAMPION HEREFORD FEMALE SOUTH DAKOTA STATE FAIR



"Sancho" x BR Copper 124Y | BW 2.6 WW 61 YW 97 MM 31 CHB \$129
 Karma was highly successful in the show ring, but we are even more excited to get her in production. The kind of female to build a program around!



MARCH
12th
2025

Get Our
CATALOG!

Let's Sires:
LAND GRANT, VALOR,
DIVERGENT, RESOLVE, GENESIS,
CUDA, 181H, H LONG HAUL

ravinecreekranch.com

2025 South Dakota Hereford Association

— Membership Directory —

Taryn Reed, SDHA Manager • manager@southdakotaherefords.org, 641-430-7787

4/0 BLUME RANCH

Ivan Blume
Bruce Blume
17137 US Hwy 281
Redfield, SD 57469
Ivan 605-460-2665
Bruce 605-460-0897
ivanblume02@gmail.com
blumebruce2@gmail.com

ATKINS HEREFORDS

Peter & Laura Atkins
27132 SD Hwy 17
Tea, SD 57064
605-351-9847
petea15@gmail.com
Directions: From the Tea Exit #73 on I-29 –
4 1/2 miles west and ¼ mile South.
Bulls and Breds Sale, Feb. 15, 2025.
Online Female & Embryo Sale;
September 27, 2025 both at Delaney Here-
fords, Lake Benton, MN.
www.AtkinsHerefords.com

BAR JZ POLLED HEREFORDS

Don & Peggy Zilverberg
Seth & Bridget Zilverberg
18542 326th Ave.
Holabird, SD 57540
Office 605-852-2966
Seth 605-870-2169
Don 605-870-1302
Peg 605-870-1304
cattle@barjz.com
North Ranch: from Holabird-13 N., 1 W., .5
S. From Onida-21 E., .5 S.
Sale Barn: From Holabird 9 N 1/2 E
www.barjz.com
Sale: February 18, 2025

BAYERS HEREFORD RANCH

Jill Bayers Hotchkiss
13823 Beaver Creek Pl.
Reva, SD57651
Cell 605-490-1409
jbh@herefordamerica.com
Bloodlines: Distinct, Anodyne, Endure,
Validated
Selling cattle private treaty.
www.BayersHerefordRanch.com

BEGALKA LIVESTOCK

Donnie & Stacy Begalka
46576 187th St.
Castlewood, SD 57223
605-873-9309 • 605-881-5056
sbegalka@itctel.com
Directions: 6 miles east, 3 miles south 3/4
miles east of Castlewood

BLACKTOP FARMS

Steve & Lori Repenning
41366 258th St.
Mitchell, SD 57301
605-999-3259 • 605-999-3260
Blacktopfarms@santel.net
Directions: 3 south of Mitchell on Hwy 37
then 3.75 east on 258th St
Endure 173D, Cuda 504C
Sale: Feb. 21, 2025

BLUME HEREFORDS

Michael & Becky Blume
Gordon & Thordys Blume
815 Hyde Rd.
Pierre, SD 57501
Michael 605-870-0052
blumeherf@yahoo.com
Directions: North of Pierre –
Call for Directions
www.BlumeCattle.com

BONES HEREFORD RANCH

Monte Plucker
45807 268th St.
Parker, SD 57053
605-297-4583
605-201-9477
msplucker@yahoo.com

BRANDT HEREFORDS

Joseph, Alexis, and Jordan Brandt
42743 263rd St.
Emery, SD 57332
605-949-2636
joseph_brandt_07@hotmail.com

CARMICHAEL HEREFORDS

Bryan Carmichael
PO Box 576
Faith, SD57626
605-788-2831

carmichaelherefords@sdplains.com
Line 1
Bull Sale: February 15, 2025
www.carmichaelherefords.com

CK CATTLE

Chris & Kristi Effling
PO Box 23
Highmore, SD 57345
Chris 605-769-0142
Kristi 605-769-1308
ckeffling@venturecomm.net

CSC LIVESTOCK

Cody & Shawna Chabot
PO Box 936
Sundance, WY 82729
Cody 307-281-2367
chabotc@yahoo.com
www.csclivestock.com
Sale Date: Genetics available private treaty
Directions: 13.5 miles south of Sundance
on Hwy 116, Right on Douglas Rd, 1st
place on left.

COVEY CATTLE

Calah, Craig, and Dawn Covey
26063 319th Ave.
Hamill, SD 57534
Calah 605-840-0951
Craig 605-840-1329
Dawn 605-840-1334
cwccovey@gwtc.net dec.63@hotmail.com

DAKOTA BORDER CATTLE CO.

Jason, Ashley, Wyatt and Jaxon Hasper,
Brayden Goehring
30425 108th St.
Herreid, SD 57632
605-850-9025
jahasper@outlook.com

DEAN SUELFLOW

37076 261st St.
White Lake, SD 57383
605-249-2634
605-680-4533
Directions: 8 south, 3.25 west, of White
Lake, SD

DELANEY HEREFORDS INC.

Jerry & Shelly Delaney
Nick & Holly Delaney
2071 CR 101
Lake Benton, MN 56149
Jerry 507-820-0661
Nick 507-829-0561
jdh@delaneyherefords.com
Directions: From Lake Benton, MN - North
2025 South Dakota Hereford Directory

on Hwy 75 4 miles, turn west onto Cty Hwy
13 for 5 miles. Turn north on Cty Rd 101 for
1.5 miles. Delaney Herefords on west side
of road.

Bloodlines: Entice, Standout, Benton, Land
Grant

Bulls and Breds Sale: Feb. 15, 2025,
Online Female & Embryo Sale: September
27, 2025
www.DelaneyHerefords.com

DVORAK HEREFORDS

Boyd Dvorak & Jeff Dvorak
30161 387th Ave.
Lake Andes, SD 57356
Boyd 605-491-7090 • Jeff 605-491-
2068
dvorakboyd@yahoo.com
Sale location - 1/4 mile east, 1/4 miles north
of Pickstown. Farm/Feedlot - 2.5 miles north
of Marty (30055 388th Ave).
Bloodlines: Calves sired by Final Print,
Lincoln, Expedition, Horned cattle sired by
Holden L1 & JCS 100 Proof 0880
Sale: Feb. 7, 2025
www.dvorakherefords.com
Facebook: Dvorak Herefords

EGGERS SOUTHVIEW FARMS

Tim Eggers & Phil Eggers
25750 476th Ave.
Sioux Falls, SD 57104
Phil 605-351-5438
Tim 605-929-6560
eggerssouthviewfarms@gmail.com
Directions: 190 Renner/Crooks Exit. East
to 476th Ave. North and to the sign (1/2
mile)
Sale: I-29 Bull Run on March 8, 2025

EICHLER LIVESTOCK

Keith Eichler
1624 Melody Lane
Aberdeen, SD 57401
605-228-7433
gotcows@yahoo.com
Bloodlines: 45C
Gotcows.com

FAWCETT'S ELM CREEK RANCH

Cheryl Fawcett, Daniel Fawcett, Kristin &
Weston Kusser
21115 344th Ave.
Ree Heights, SD 57371
Cheryl 605-870-0160
Daniel 605-870-6172
danfawcett869@gmail.com
kylajfawcett@gmail.com
kcfawcett@hotmail.com

Bloodlines: FECR Powered Up Line 1, NJW
Polled Breeding
Annual Production Sale - Feb 10, 2025.
April & October Female Sale.
www.FawcettsElmCreekRanch.com

FINK POLLED HEREFORDS

Mike C. Fink
43610 SD Hwy 42
Bridgewater, SD 57319
605-729-2515 • 605-999-2075
finklaw@unitelsd.com
Directions: 1/4 east of Bridgewater
Bloodlines: Fink Key 758 G59
<https://sites.google.com/site/finkpolledherefords/home>

FLIGHT 154 CATTLE COMPANY

Meagen & Chase Fischer
45868 292nd St.
Centerville, SD 57014
605-660-1595
605-660-781
flight154.mf@gmail.com

FREDERICKSON HEREFORDS

Frederickson Ranch
Mark & Mary Kay Frederickson
Nate & Jayna Frederickson, Teegan
and Tiernan
10100 Homestake Rd.
Spearfish, SD 57783
605-642-2139
Nate 605-254-4872
Mark 605-645-4934
fredericksonranch@gmail.com
6 miles west of Spearfish on I90 to exit 2.
South 2 miles west, west 1 mile, south 3/4
mile
Bloodlines: SHF Daybreak D287, LXC Per-
fecto 11B, Highland 84E
www.fredericksonranch.com
Sale: December 6, 2025

MARK GANT FARM INC.

Mark Gant & Jason Gant
PO Box 15
Geddes, SD 57342
Mark 605-680-1540
Jason 605-321-1596
markgant@midstatesd.net
2 west of Geddes, SD
Bloodlines: Valor, Trust, Leader, NJW
Decorby
Bull Sale: February 28, 2025

GERLACH HEREFORDS

Jeff & Donna & Kyle Gerlach
39412 259th Street

Stickney, SD 57375-5600
Home 605-236-5724
Cell 605-999-1494
jdck@santel.net
Directions: from Sickney-3 N. 6E; from Mt.
Vernon- 6 S., 3 W.
Bloodlines: 88X, Endure 173, SR Expedi-
tion
Private treaty first weekend of March.

G.O. PROMO LLC

Girlfriend Original Promotions, LLC
Robin Kleine Struck
4304 W. Pennsylvania Cir.
Sioux Falls, SD 57107
219-306-0323
gopromollc@gmail.com
www.girlfriendoriginal.com

GOLDEN MAPLES

TJ & Anna Sanftner
2757 220th Avenue
Deer Park, WI 54007
715-410-5238
tjsanftner@yahoo.com
64 E to 63 N 1/2 mile in Star Lake, Ribeye
88 son, Mason son, AI w/ Red Kingdom,
Copper Candi & Star Lake, Thunder & Lock
& Load

HANSMEIER & SONS, INC.

Keith Hansmeier and Larissa Klebsch
77 Main St. S.
Bristol, SD 57219
Larissa 605-216-5556
lshansmeshea@gmail.com
Bloodlines: STUD 63E, Flash 559C, She-
nanigan 551G, Rampage D7, Drammen
32K
Sale Date: Private Treaty

HANSON'S POLLED HEREFORDS

Sherry Hanson
15481 409th Ave.
Conde, SD 57434
Sherry 605-382-7477
hanson_herefords@hotmail.com
Sale Date: Bull & heifers for sale private
treaty, BHSS, & Watertown Farm Show

HEREFORD AMERICA

Jill & Marc Hotchkiss
13823 Beaver Creek Pl.
Reva, SD 57651
Office 605-866-4495
Jill 605-490-1409
Marc 605-210-1956
jbh@herefordamerica.com
www.HerefordAmerica.com

HILLSVIEW FARMS

Darwin & Cindy Aman
 32824 119th St.
 Eureka, SD 57437
 Darwin 605-377-3459
 Cindy 605-377-3441
 dcaman@valleytel.net
 Directions: From Eureka - 7 south on Hwy
 47, 1.25 miles East on Hillsview Rd.
 Bloodlines: Trust, Cash Flow, Home-
 town
 Sale Date: Feb. 22, 2025

HOFFMAN HEREFORDS

Colin and Mary Beth Hoffman
 Miles Hoffman
 11341 357th Ave.
 Leola, SD 57456
 Colin 605-216-5706
 Miles 605-277-5048
 cmbhoffman@msn.com
 Directions: from Leola – 5 W. & 1.5 N.
 Bloodlines: Remittal Rita and Sally cow
 families. Precise, Triple Crown, Dakota Lad,
 Sterling, Dubai, and After Hours herd sires.
 www.hoffmanherefords.com

HORA HEREFORDS

James or Karla Hora
 27718 423rd Ave.
 Parkston, SD 57366
 605-928-3008
 605-770-3008
 jhora@santel.net
 Directions: from Parkston-13 E. & 1.25 S.

JOHNSON HEREFORD FARM

Jack & Lynne Johnson
 2165 240th St.
 Milford, IA 51351
 Jack 712-260-3650
 Lynne 712-330-7470
 jllfarm@hotmail.com
 Directions: 2 miles south of Milford on Hwy
 71 and 1/4 mile to the west, big evergreen
 grove and two silos.
 Wrangler and Line One in the cow herd.
 Using Cuda and Historic sons.

KLAGES HEREFORDS

Jeff & Mary Klages
 64090 410th St.
 Ortonville, MN 56278
 320-273-2163
 Jeff 605-880-0521 • Mary 320-305-9047
 jmkklages@fedteldirect.net
 Directions: From Ortonville, MN: 8 Miles
 east on US Hwy 12, 1 mile North of 650th
 Ave, 1 miles east on 410th St.
 2025 South Dakota Hereford Directory

Bloodlines: WLB Anser 90X 10Z, RV Thun-
 derstruck 4239, ECR RO 3304 Tobey, KCF
 Bennet BH13 G85. KCF Bennet C776 H471
 Sale Date: Watertown Winter Farm Show &
 Sale and by private treaty

KNIPPLING HEREFORD, LLC

Randy & Susan Knippling
 Garin & Jerri Ann Haak
 Tyler & Sarah Danil
 Rob Knippling
 34957 225th St.
 Gann Valley, SD 57341
 605-680-3185 * 605-680-4637
 Garinhaak@yahoo.com
 Directions: 11 West of the Hwy 45 & Hwy 34
 crossing at 349 Ave., go 3 North to 225 St.,
 then ½ mile East
 Bloodlines: Line 1 and Canadian
 Sale: Jan. 26, 2025
 www.Knipplinghereford.com

KNOCK'S WOLF CREEK RANCH

Eric & Roxanne Knock
 Rylee Knock
 RaeAnne Knock
 18591 375th Ave.
 Tulare, SD 57476
 605-596-4154
 605-695-4086
 Directions: 9 miles West and 3 miles South
 of Tulare
 Bloodlines: Revved Up 78A, Bennett Ac-
 claim, Domino 1109
 reknock@venturecomm.net
 Sale Date: Private Treaty

KRETH HEREFORDS

Barclay Kreth & Darwin Kreth
 26791 397th Ave.
 Mt. Vernon, SD 57363
 Cell 605-630-8335
 bwkret@gmail.com
 from Mt. Vernon – 14 S.; from Corsica – 7 E.
 & 5 N.
 Bloodlines: NJW 202173D Steadfast
 156JET, SHF Houston D287 H086, NJW
 95G 41E Hoss 187K, SB L1 Domino 103
 www.krethcattle.com
 Sale: Feb. 22, 2025

L BAR W CATTLE CO.

Carl & Denise Loyning
 Mike & Jeannette Walen
 PO Box 398
 Absarokee, MT 59001
 Carl 406-425-2484
 cdloyning@gmail.com
 Directions: 21 Red Barn Lane, Columbus,

MT. 10 miles south of Columbus, Montana
on Hwy 78
Bloodlines: Line 1 genetics with Churchill &
Colyer added genetics.
Sale March 12, 2025 @ the ranch
www.lbarw.com

LNJ FARMS & RANCH

Lyle, Jackie,
Lyla, Nathan and Jasmine Bothe
47765 219th St.
Aurora, SD 57002
Lyle 605-691-3870 • Jackie 605-691-3290
lnjfarmsranch@gmail.com
Directions: 1-29 to exit 127, head east on
SD Hwy 324 4.5 miles to 477th Ave., go
south 2 NJW
Bloodlines: Endure, TH Frontier, TH Master-
plan, R Leader, ECR Advance, ECR Tater
Tot, ECR Shameless
Sold Private Treaty
www.LNJFarms and Ranch.com

LAIBLE HEREFORDS

Landon & John Laible
43703 SD Hwy 34
Howard, SD 57349
Landon 605-579-0148
John 605-579-0072
landonlaible@gmail.com
Directions: 3 miles east of Howard, SD
Horned & Polled genetics

METTLER CATTLE CO.

Brian, Teresa, Brooklyn, and Jaxen Mettler
Ron and Kevin Mettler
28225 431st Avenue
Menno, SD 57045
605-951-3007
605-359-9035
bmettler@gwtc.net
Directions: 3 and ¾ miles North of Menno,
Bloodlines: Rampage, Eastwood, Miles
Mckee, Revolution, Genesis, Desperado,
Guardian, 2296, P606, Belle Air, About
Time
Sold Private Treaty - any time
www.mettlerpolledherefords.com

MK MAHER HEREFORDS

Mitch & Kim Maher
46005 224th St.
Nunda, SD 57050
Cell 605-480-3993
mjmaher8282@gmail.com

MULLER CATTLE

Steven & Glenn Muller
28087 463rd Ave.
Davis, SD 57021-6131
Glenn 605-359-0668
Steven 605-359-0667
mullercattle@hotmail.com
mullercattle@venturecomm.net
Directions: from Davis-2 E. and 4.25 N.
Bloodlines: DB Hard Drive, Mary Jane
0251, Purple Milsap 45S, RW Centerline

NUHSBAUMER HEREFORDS

Steve and Amy Nuhsbaumer
Casey Nuhsbaumer
17661 370th Ave.
Zell, SD 57469
605-450-0550
Stevenuhsbaumer@gmail.com
From Zell - 3 miles west on US Hwy 212.
South on 370th Ave 5.5 miles.
Bloodlines: Mostly Line 1 Horned Hereford

OLLERICH BROS. HEREFORDS

Jerome Ollerich
James Ollerich
29188 303 Ave.
Clearfield, SD 57580
605-557-3246
Jerome 605-842-5212
James 605-359-4006
jeromeo@goldenwest.net
Directions: 4 west of Clearfield OR 10 west
of 155, 3 miles w from Winner, SD.
Bloodlines: Daybreak, Standing Ovation,
Expedition, Leader
Sold Private Treaty
ollerichbrothersherefords.com

OLLERICH CATTLE

Ryan Ollerich
47637 172nd Street
Clear Lake, SD 57226
605-759-6405
ryanollerich@yahoo.com

OLTHOFF POLLED HEREFORD FARM

Eldon, Susan &
Jonathan Olthoff
26117 429th Ave.
Emery, SD 57332-7300
605-449-4766 •605-661-0116
esjolthoff@triotel.net
Directions: From Emery - .25 south from
west side of town

PEIRCE POLLED HEREFORDS

Vernelle & Bonn Clayton
 East of White, SD
 Peircepolledherefords.com
 Call Vernelle or Bonn at
 605-479-3099 • 612-369-4370
 Directions: Call for directions from
 White, SD.
 Bloodlines: Validated, TH Frontier, Blueprint
 vernelle@vclayton.com
 Sale Date: Private Treaty

PESKEY FARMS

Mike & Lori Peskey
 21967 411th Ave.
 Iroquois, SD 57353
 Mike 605-350-5788
 Lori 605-350-1015
 peskeyfarm@gmail.com
 Directions: 12 S, 2 E 3/4 S of Cavour, SD.
 Sale: March 12, 2025

RAINBOW HEREFORDS

Vickie Mensch-Geuther & son Cody
 Geuther
 30734 456th Ave.
 Volin, SD 57072
 Vickie 605-661-3421
 Cody 605-670-1807
 Rainbowherefords@gmail.com
 Bloodlines: ABC Ribeye Buster 414, MC Bo
 Jangles 08ET, RH Lockwood 025, Daybreak
 247, JDH 73F 21G Prominent 5K
 Sale: Brookings, Go-pher, Neb. Corn Husk-
 ers, Private Treaty

RAUSCH HEREFORDS

Shannon Rausch, Jacob Rausch
 Peter Rausch
 14831 Hereford Rd.
 Hoven, SD 57450
 Shannon 605-769-0203
 Jacob 605-769-0552
 Peter 605-281-0471
 Jacob@rauschherefords.com, peter@raus-
 chherefords.com, shannon@rauschhere-
 fords.com,
 Bloodlines: Polled & Horned Genetics
 Directions: 2.5 West of Hoven: Hwy 20 &
 47
 Sale: Presidents Day – 3rd Monday in
 February
 Rauschherefords.com

RAVINE CREEK RANCH

Gerald & Janelle Bischoff
 Garret Bischoff
 Matt & Heather Bischoff
 2025 399th Ave.
 Huron, SD 57350
 Gerald 605-350-0979
 Garret 605-461-1555
 Matt 605-350-0980
 ravinecr@santel.net
 Directions: From Huron, Intersection of Hwy
 14 & Hwy 37 - 8N, 1W and 1/4S.
 Annual Production Sale March 12, 2025
 www.ravinecreekranch.com

RCR POLLED HEREFORDS

James & Bonnie Simmermon
 38372 291st Street
 Lake Andes, SD 57356-6871
 Home 605-487-7406
 Jim 605-481-1936
 jsimmermon@hcinet.net
 Bloodlines: Nichols Prime Time 546, Cash
 Flow, Catapult, Summit, AH Online Tra-
 dition 11P, RCR Maintrain P2.

REED GENETICS

Justin, Taryn, Koy & Krew Reed
 36951 229th St.
 Wessington Springs, SD 57382
 Taryn 641-430-7787 • Justin 641-919-9383
 taryn.reed@outlook.com

SCHUETTE LAND & CATTLE

Jim & Judy Schuette
 PO Box 266
 Highmore, SD 57345
 Jim & Judy 605-852-2789
 Jim 605-870-8617
 slc@venturecomm.net
 from Highmore - junction of Hwy 14 & 47 -
 2.5 N 1 E & .25 N

SCHUETTE LAND & CATTLE

Kathy Schuette, Rebecca & Courtney
 19479 337th Ave, PO Box 66
 Highmore, SD 57345
 Kathy 605-478-0302
 sd_cowgirl1@hotmail.com
 Bloodlines: CCCC Genesis 45C 204 KET,
 JDH 21D 9365 Entice 13J, R Anodize 4540,
 ECR Copper Candi 1333ET
 Sold Private Treaty

SECTION 16 CATTLE COMPANY

Erik Scott
Craig Broughton
47881 287th Street
Canton, SD 57013
605-214-1332
Section16cattleco@live.com
Directions: 5 mile South of Canton on Hwy
11, ¼ West, south side of the road.
Sale: I-29 Bull Run on March 8, 2025
www.section16cattleco.com

SIMON HEREFORDS

Brian & Colleen Simon
32792 US Hwy 212
Seneca, SD 57473
Home 605-436-6725
Brian 605-765-4564
bcsimon@venturecomm.net
Directions: Going east, 18 miles east of
Gettysburg; going west, 4 miles west of
Seneca on US Hwy 212.
Bloodlines: Braxtn Mackintosh 117D, Gerber
Liberty 017L, KCF Bennett 3008 M326,
SSS Mackintosh 0232, SMN 0527 Liberty
0709
Sold Private Treaty
www.simonherefords.com

SLEEPY HOLLOW FARM

Mark, Jeanne - Trevor & Tate Johnson
28901 465th Ave.
Centerville, SD 57014
Mark 605-212-2387
Jeanne 605-957-5036
johnsonm655@yahoo.com
jeanne.johnson@yahoo.com
Facebook: Sleepy Hollow Farms – Hereford
and Angus
johnsonm655@yahoo.com
Directions: From I-29 Fairview Exit #56, 4.5
W, 1 S and 1 W. on 289th St.
Sale: Annual Bull Sale 2nd Friday in March
at the Farm

STENBERG HEREFORDS

Cody & Kasey Williams
Dave & Audrey Stenberg
47229 232nd St.
Colman, SD 57017-6821
Cody 605-695-0931 • Dave: 605-530-6002
stenbergherefords@gmail.com
Directions: 20 miles south of Brookings, Exit
114. 1/4 mi west, 2 mi north, 1/4 mi east. 30
miles north of Sioux Falls, Exit 109, 1/2 mi
west, 3 mi north, 1/4 mi east.
Sold Private Treaty & SD Excellence Sale
www.StenbergHerfs.com

THORSTENSON HEREFORD RANCH

Bill & Paula Thorstenson
Darin & Danielle Thorstenson
6804 Overholzer Ave.
Selby, SD 57472
Bill - 605-845-6108
Darin – 605-321-6416
wpthorstenson@venturecomm.net
Directions: 3.5 miles south west of Selby, SD
Bloodlines: NJW 21C 6589 Ignite 97G ET,
KCF Bennett Eagle H550, BAR STAR Embel-
lish 020 ET
Sale: April 11, 2025
Thorstensonherefordranch.com

TRICKY'S HEREFORDS

Richard W & Betty Wetlaufer
44132 234th St.
Winfred, SD 57076-7318
Sale: March 2025. Call for information.

TSR CATTLE CO.

Troy, Shannon,
Tyler, Riley, Shaedan Rasmussen
21959 476th Ave.
Aurora, SD 57002-7110
Troy 605-690-0100 • Shannon 605-690-0105
Tyler 605-690-3150 • Riley 605-690-9450
tsrasmussen@outlook.com
Directions: I-29 Exit 127, Head east on Hwy
324 3.5 miles to 476th Ave, go south 2.5
miles
Bloodlines: Harvey Hudson, NJW Long Haul,
SR Sierra, Pyramid Pilgrm, Pyramid Day-
break, ECR TSR OBH Standing Ovation
Sale: I-29 Bull Run, March 8, 2025
www.tsrcattleco.com

WOODCREST FARMS

Seth Wood & Ruth Wood
36568 153rd St.
Cresbard, SD 57435
605-626-1643
sethwood1233@yahoo.com
Bulls and Heifers for sale Private Treaty
Directions: 1 miles north of Highway 20 on
366th, 1/4 mile west on 153rd

ZENS HEREFORDS

Matt Zens
24480 432nd Ave.
Canova, SD 57321
Matt 605-310-5782
mattzens@yahoo.com
Directions: 3 south, 3 west of Canova
Bloodlines: Line 1 and Canadian genetics
Sold Private Treaty
www.zensherefords.com

DVORAK



HEREFORDS

02.07.25 ANNUAL BULL *and Bred Heifer Sale*

BOYD DVORAK 605.491.7090 JEFF DVORAK 605.491.2068
DVORAK HEREFORDS @ f WWW.DVORAKHEREFORDS.COM
30161 387TH AVE LAKE ANDES, SD 57356

FEATURING BULLS SIRED BY



RST FINAL PRINT 0016
AHA: 44178105



JDH AH LINCOLN 106H ET
AHA: 44148953



SR EXPEDITION 619G ET
AHA: 44054044



KSU LAND GRANT 153 ET
AHA: 44231207

SELLING 55 BULLS
& 30 BRED HEIFERS

The **Livestock**™ *Link*

THE *Best* IN LIVESTOCK VIDEOS
AND VIDEO SALES

Call us
to schedule
your next
sale!



**VIDEOING &
VIDEO SALES**



Our videographers and editors pay attention to every detail. We use large, high-definition TV screens for your video sales.

**FULL SERVICE
CLERKING**



Full clerking services with detailed reports including sale summary, media reports, sire reports, insurance reports, load out and delivery sheets and more.

**LIVE INTERNET
SALES & BIDDING**



Live internet sales with full feature bidding.



Phil Eggers



Rosie Hotchkiss & Ashley Thybo



Contact Marc or Phil
to visit about pricing or
scheduling.

— ASK ABOUT THE TOTAL PACKAGE —
VIDEOING, VIDEO SALE, CLERKING AND ONLINE

Marc Hotchkiss - 605/210-1956
marc.hotchkiss@gmail.com

Phil Eggers - 605/351-5438
phil@TheLivestockLink.com

WWW.THELIVESTOCKLINK.COM

RED & WHITE Since 1918

Focusing on Structural Correctness • Good Feet & Legs
Maternal Qualities • Fertility • Sound Udders & Teats
Balanced EPDs • Carcass Traits • Pigment



• BULLS FOR SALE PRIVATE TREATY •

Sired by F DISTINCT 259, F PERFECT STORM 277 & GUARDIAN

The 2025 calf crop is sired by Huck & Endure (pictured below)



L3 B413 Desert Value 219 "Huck"

BW 3.1 WW 64 YW 100 MM 34 M&G 66
REA .96 Marb .56 CHBS 170

In the top 2% for REA, Marbling & BII.

In the top 3% for BMI & CHB.

Top selling bull in Largent's 2024 sale.

First calves arrive in 2025.



F Endure 180

BW 3.6 WW 74 YW 127 MM 31 M&G 68
REA 1.00 Marb .51 CHBS 218

*In the top 1% for YW, CW, REA,
BMI, BII & CHB.*

In the top 2% for WW & Marbling.



• Horned & Polled •

For more information contact:

Bayers Hereford Ranch

Jill Bayers Hotchkiss

jbh@herefordamerica.com

605/490-1409

13823 Beaver Creek Pl. • Reva, SD 57651

www.BayersHerefordRanch.com





SEEDSTOCK. LAND. EQUIPMENT.

 *Chisum Peterson*
Peterson
Land & Auction


Office 605.234.4214
Mobile 605.730.4214

310 Sorensen Drive
PO Box 498
Chamberlain, SD 57325
chisum@petersonlandauktion.com
petersonlandauktion.com

Hansmeier and Son Inc.

Registered Herefords since 1955

LARISSA KLEBSCH
605-216-5556

 FOLLOW US ON FACEBOOK AT HANSMEIER AND SON



PRIVATE TREATY FALL AND SPRING BULLS
SPRING HEIFERS AND STEERS

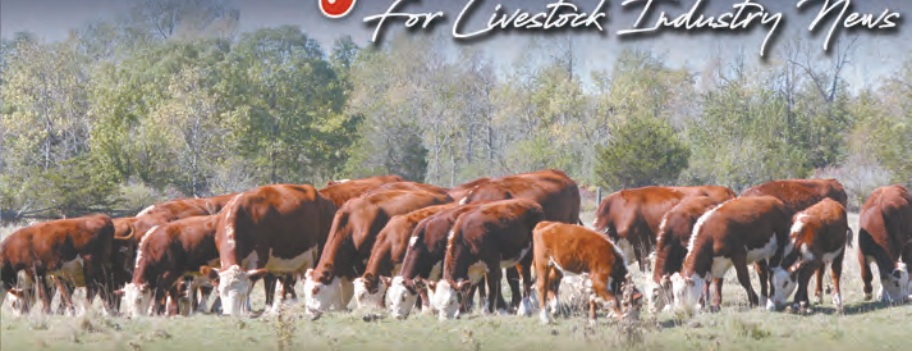
VISIT ANYTIME AT THE RANCH
14302 414TH AVE. ANDOVER SD 57422

INDEX

4/0 Blume Ranch (4/0)	13	Knippling Hereford	2
AHA - Aaron Friedt	24	L Bar W	16
Atkins Herefords	11	Laible Herefords	24
Bar JZ Ranches	14	Lauren Elyse Weishaar	25
Bayers Hereford Ranch	37	Members	28-34
Cattle Business Weekly	40	Mettler Cattle	15
Dvorak Herefords	35	Ollerich Bros.	42
Fawcett's Elm Creek Ranch	21	Peskey Farms	26-27
Fink Polled Herefords	3	Peterson, Chisum	38
Focus Marketing	20	Peterson, Lane and Emily	17
Gant Herefords and Angus	19	Rainbow Herefords	14
G.O. Promo (Robin Kleine)	15	Rausch Herefords	1
Hansmeier and Son Inc.	39	Ravine Creek Ranch	26-27
Hanson, Sherry	5	SDHA Board & Events	4
Hereford America	22	SDJHA Info	4
Hillsview Farms	9	Section 16	12
Hoffman Herefords	23	Stenberg Herefords	8
JB Ranch	10	The Livestock Link	36
Johnson Hereford Farm	10	Thorstenson Hereford Ranch	7
		Zens Herefords	41

The Region's Choice

for Livestock Industry News



THE
CATTLE BUSINESS
WEEKLY

PO Box 700, Philip, SD 57567

605-859-2022

www.cattlebusinessweekly.com

70 Years of Private Treaty Bull Sales

ZENS HEREFORDS



**FOR SALE BY PRIVATE TREATY
YEARLING AND TWO-YEAR-OLD BULLS**

Sire groups represented:

CL 1 Domino 1176 • CL 1 Domino 0186 among others

High Quality Genetics at an Affordable Price

ZENS
HEREFORDS

24480 432nd Ave. Canova, SD 57321
605-310-5782 • mattzens@yahoo.com

WWW.ZENSHEREFORDS.COM



FALL YEARLING BULLS FOR SALE

Sired by these bulls



SR EXPEDITION 619G ET
BW 0.6; WW 70; YW 113; M 45;
M&G 80; MCE 7.5; REA .43; MRB .14;
BMI\$ 543; CHB\$ 114
SONS AND GRANDSON FOR SALE.



SHF DAYBREAK Y02 D287 ET
BW 1.4; WW 70; YW 109; M 26;
M&G 61; MCE 2.8; REA .83; MRB .27;
BMI\$ 466; CHB\$ 144
SONS FOR SALE.

Contact us for more information:



29188 303 Ave. • Clearfield, SD 57580
605-557-3246

Jerome's cell: 605-842-5212 • James' cell: 605-359-4006
www.ollerichbrothersherefords.com

