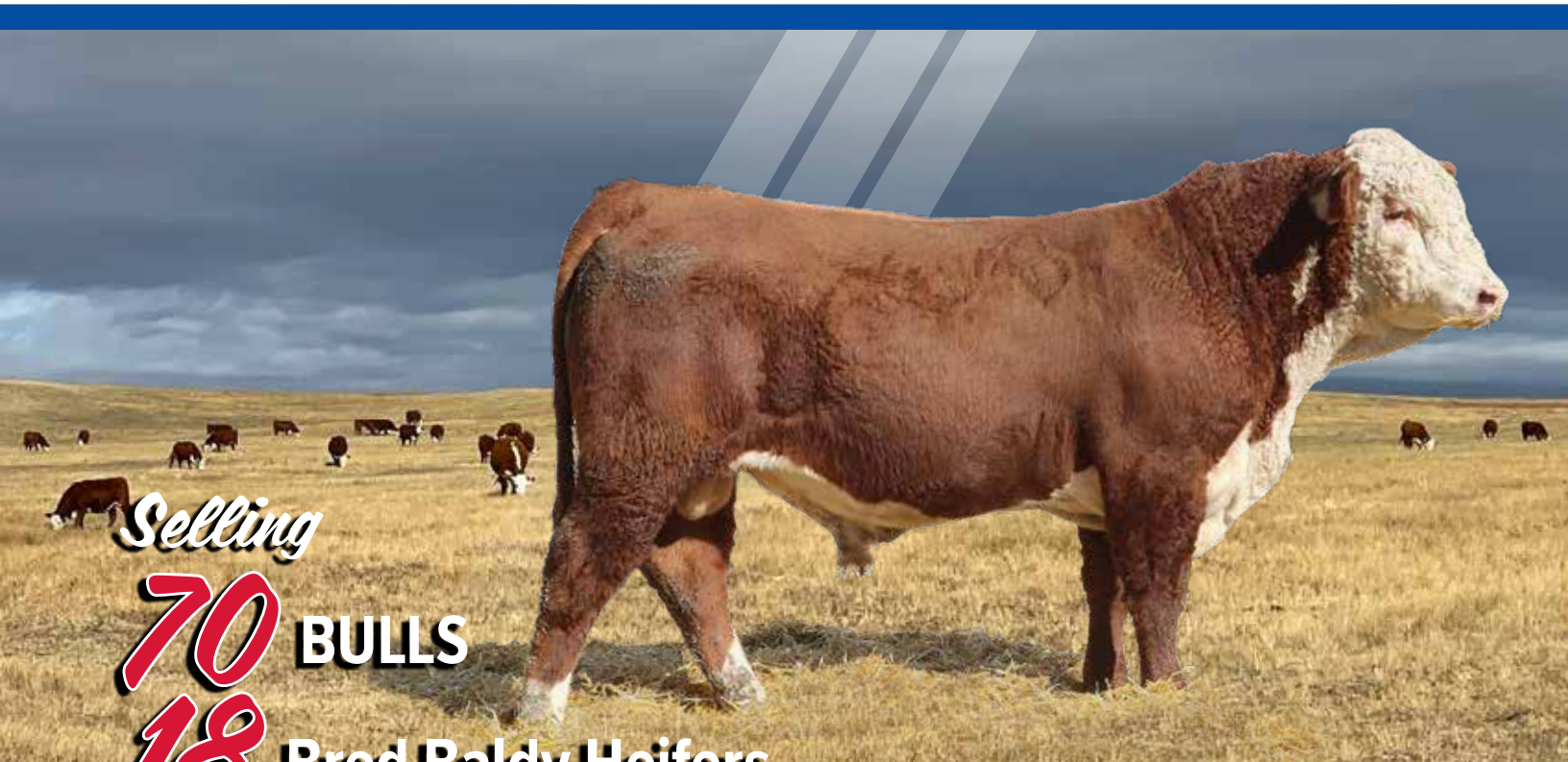


2024 **The Berry's**
HEREFORD BULL SALE



Selling

70 BULLS

18 Bred Baldy Heifers

Monday, November 25, 2024

WHERE
COWMEN
BUY **BULLS**

Welcome!

Welcome to our annual sale. Every year we consider it a privilege to invite you to evaluate these cattle. They are survivors. We have seen a second summer in three years that could only be described as a "stress test". I am glad I can't hear our cows complain about old grass. Half our mature cows and the bulls stayed home and that's what they had to eat. We have been extremely blessed to have found pasture and care for the cattle in Walden keeping us from having to make some decisions on cow numbers and weather. I think it speaks highly of the herd to go and perform in the tough environments we need to have our bulls go out and work in. Off test the bulls looked as even and good as they come. The raw performance and quality of the offering speak volumes about our genetic choices for you and what you can add to each calf. Balance is critical in all traits and sustainability is crucial proven by the way these cattle adapted and responded to staggering dry conditions.

November is slightly earlier and we are trying to accommodate everyone it takes to make this event happen. These bulls were warmed up slower to yearling weights this year and then put on GroSafe testing at SAREC. Ultrasound is taken at the end of the test. The bulls show it was a hot dry July and we ran them in one bunch without any supplement. They are bouncing back as I write and should look great by video day and sale. The bulls came in to be put on feed mid-September. What really needs to be showcased is the uniformity and improvement in these cattle. We are selling more, better cattle with same ration and the carcass scans are significantly improved. This is about the improvement of an entire calf crop, not an individual. When you milk you will get some cream and we have some exceptional bulls coming to the top. We have some top RFI scores and the value of this data and its impact are grossly understated. Our reference sires are competitive nationally and I think these bulls could do it anywhere.

We have been diligent in selecting calving ease focusing on cattle that are shaped right. We had our first 111 calves in ten days this spring. If you end up on a lease on the west side you get to walk at least 20 miles to get home and then trail to winter pasture. Mother nature and good fortune had us summer over 200 females in beautiful Walden Colorado. Wind and snow are death on bad bags we have to cull hard on it. Our udders are competitive anywhere and I don't like to milk. Dispositions are crucial here and they are gentle. We will sell the bulls on video instead passing them through the ring. Weights and GroSafe info are available sale day.

These cattle have adapted and PAP tested well in Burns, Big Piney and Walden. If you make it there you can go anywhere. Our current sires have all been tested. The heifers both baldy and Hereford passed with great results. They were tested in Walden after 90 days there and we are working on trucking to have them back by sale day. Video is unlikely on them but breeding info is available. They are the mating of our first breeding season in Walden where we had to come up with four bulls you could breed to everything. With a ten day notice it was decided they would have to be black. We have sent one Hereford bull with the blacks the following two years. All bulls have passed a breeding exam and our herd health is good. We stand behind these bulls to be sound breeders. Health papers will be provided to go anywhere. Free delivery for \$4,000 purchase up to 300 miles and we cooperate on any delivery anywhere. \$100 off sale day and \$50 on bulls picked up in a week. All out of state bulls are required to have a trich sample taken before they leave. We will try to cooperate on females. Internet bidding is carried by The Livestock Link.

Hats off to the guys from JC Berry on up to persevere with a vision and resolve to let us be here today. My parents love for the people and the cattle in this business gave us a foothold you can't buy. Marvin's eye for a great one was incredible. This is a humbling legacy to pursue and mother nature keeps us honest. I am grateful for all the help it took to get back here again this year. Obviously, I have great support beside and behind me and thanks to Janice and the family for all of it. We intend to have these cattle look as good as we can and be honest about what they are.

We know you have many choices and thanks in advance for coming here. It is worth the drive.

See you sale day!

Jay and Janice Berry & Family

WHERE
COWMEN
BUY
BULLS

Please note any EPD in the top 10% is noted next to each of those bulls' EPD traits

These cattle have adapted and have been PAP-tested well in Burns, Big Piney and Walden. If you make it there you can go anywhere. Our current sires have all been tested. All bulls have passed a breeding exam and our herd health is good. We stand behind these bulls to be sound breeders. Health papers will be provided to go anywhere.

Free delivery for \$4,000 purchase up to 300 miles and we cooperate on any delivery anywhere.

\$50 off on bulls picked up in a week. Internet bidding is carried by The Livestock Link.

The Berry's

Selling 70 BULLS 18 BRED BALDY HEIFERS

Monday, November 25, 2024

• • • 3049 County Rd. 225 • Cheyenne, WY 82009 • • •

Announcements

DIRECTIONS:

17 miles northeast of Cheyenne on US 85

CONTACTS:

Jay and Janice Berry / home (307) 634-5178
Cell (307) 630-7944
Lander Nicodemus (307) 421-8141
Joe Goggins / Auctioneer (406) 861-5664



REPRESENTATIVES:

Kevin Murnin, American Hereford Association (406) 853-4638
Marc & Jill Hotchkiss, *Hereford America*
Marc Hotchkiss (605) 490-1513
Jill Hotchkiss (605) 490-1409
Curt Cox, *Wyoming Livestock Roundup* (307) 630-4604
Jim Gies (970) 590-0500
Alan Sears, *Western Ag Reporter* (970) 454-3986
Cell (970) 396-7521

Catalog produced by AHA Creative Services
Visit the AHA website to view the catalog online!

View videos on our website

www.WhereCowmenBuyBulls.com

***WE WILL RETAIN PARTIAL OWNERSHIP IN SELECT BULLS TO BE ANNOUNCED SALE DAY**

LUNCH:

Lunch 11:30 AM
Sale starts 1:00 PM (MT)

Explanation of feed testing measurements

March 19 to July 10, 2024. Pen size was doubled, and the bulls did better for it. Their facility was updated this last year, and the data is reviewed by GrowSafe. Bulls were trained to feeders and evaluated on an 80-day feeding study where individual feed intakes were measured. A backgrounding/growing diet was fed, consisting of cracked corn, ground alfalfa hay, corn silage and protein supplement. The ration was formulated for an estimated daily gain of 3.67 lb./day. Individual weight gain and feed intakes were collected on each bull.

Calculations included:

Overall Weight Gain – Two initial and final weights were taken on consecutive days, with the 2 day average used to calculate total gain during the 79-day feeding study.

Average Daily Gain (ADG) – Total weight gain divided by 79 days.

DM Intake – Actual feed intake measured for each individual bull, through the GrowSafe feeding nodes. Feed amounts provided in the table are adjusted to a 100% Dry Matter (DM) basis.

Feed: Gain – A measurement of feed efficiency, listed as the lb. of feed required to achieve 1 lb. of weight gain for each bull. This is calculated using the daily feed intake and ADG for each bull. A lower number

indicates a more efficient bull (less feed required to achieve weight gain). **Gain: Feed** – Also a measurement of feed efficiency, listed as the amount of weight gain achieved for each 100 lb. of feed consumed. In this case, a higher number indicates a more efficient animal. In other words, more weight gain was achieved per 100 lb. of feed consumed.

RFI – Residual Feed Intake. RFI is the preferred method of evaluating efficiency in seedstock animals because it is an efficiency measurement that adjusts for the size of the animal. Using traditional feed efficiency measurements (to select cattle) would cause you to indirectly select for larger animal size because larger frame animals tend to be more efficient. RFI is preferred because it is a feed efficiency index independent of animal size. RFI numbers refer to the comparison between actual feed intake vs. expected feed intake (based on the ration fed and animal size). A negative number is preferable, indicating a more efficient animal that consumed less feed than predicted. Positive RFI indicate a less efficient animal that consumed more feed than expected.

Rankings and combined Ranking. All bulls were ranked based on ADG, feed efficiency and RFI, with individual rankings provided. A combined ranking was also included, which equally weights the bulls ADG, efficiency and RFI ranking, with bulls ranked on their combined scores. The #1 combined ranking would indicate a bull that had the highest combined ranking in all three measurements.

A **CHURCHILL KINGDOM 128J ET**
REF. SIRE P44267937 Calved: 1/12/21 • Tattoo: LE 128

LCX PERFECTO 11B ET
DM ALL AROUND 9046 ET
 P44015527 DM L1 DOMINETTE 301 ET

EFBEEF BR VALIDATED B413
BR VALIDATED B413 6035 7098
 P43857421 BR BENNETT 4R Y428 21016035

NJW 98S R117 RIBEYE 88X ET
 WLL ZO EY 32
 CL 1 DOMINO 955W
 DM L1 DOMINETTE 901

EFBEEF TFL U208 TESTED X651 ET
 EFBEEF 4R THYRA Y865
 KCF BENNETT REVOLUTION Y428
 BR BENNETT OF 4070 2101

CE	BW	WW	YW	SC	MM	REA
10.4	0.8	66	98	1.7	34	0.94
MARB	CHBS	Act. BW	Adj. WW/Ratio	Adj. YW/Ratio	Adj. REA/Ratio	Adj. MARB/Ratio
0.42	164	76	724/-	1174/-	14.22/100	4.53/117

• Carcass and calving ease made the breeding decision for this bull an easy one. The pattern of his progeny is flawless. His dam is the cow in the Hereford breed for siring easy on the eyes offspring and is consistent with her ability to cross well with several sires. He was used successfully on heifers and added an extra dimension on the cows he was used on. He is tested homozygous polled with full pigment. Ten sons sell with almost all being great calving ease prospects.

e **CHURCHILL ROUGHNECK 0280H ET**
REF. SIRE 44198621 Calved: 3/15/20 • Tattoo: LE 280

HH ADVANCE 5044C ET
CHURCHILL ROUGH RIDER 719E
 43802006 CHURCHILL LADY 518C

LJS MARK DOMINO 1321
CHURCHILL W4 LADY 770E
 43850931 CHURCHILL LADY 5131C ET

CL 1 DOMINO 215Z
 HH MISS ADVANCE 1072Y ET
 CHURCHILL SENSATION 028X
 CHURCHILL LADY 366A

LJS MARK DOMINO 0945
 LJS MS MARK DOMINO 1125
 SR BAKKEN 62Z
 CHURCHILL LADY 9123W ET

CE	BW	WW	YW	SC	MM	REA
9.2	-0.3	55	92	1.9	33	0.57
MARB	CHBS	Act. BW	Adj. WW/Ratio	Adj. YW/Ratio	Adj. REA/Ratio	Adj. MARB/Ratio
0.42	151	75	-/-	-/-	-/-	-/-

• The EPD profile of live calf to YW is what we always look for, but the carcass stats and muscle shape will bring you back to this sire fast. Genex says "He excels in carcass traits with top-tier marbling and ribeye combined with breed leading breed leading udder quality and milk. Roughneck is wide based, thickly made and carries a lot of presence with excellent feet and legs. His cow family is unique for its ease of fleshing, depth of rib and excellent udders. He boasts excellent eye pigmentation, scrotal size and shape." We were so impressed with his son Stanfield at Churchill's last spring we own a breeding interest, and he will be a leading sire of the 2025 calf crop. Six sons sell.

ε **H OUTCROSS 7422 ET**
REF. SIRE 43799212 Calved: 3/9/17 • Tattoo: BE 7422

GOLDEN-OAK FUSION 3S
GOLDEN OAK OUTCROSS 18U
 P42963135 GOLDEN-OAK 60D MALLORY 15M

NJW 98S R117 RIBEYE 88X ET
H MS 5139 ADVANCE 4207 ET
 43487703 HH MISS ADVANCE 5139R ET

GOLDEN-OAK 4J MAXIUM 28M
 NCX MISS JR NELLIE 528N
 RU DUSTER 60D
 GOLDEN-OAK P183 GLORIA 25G

SHF RIB EYE M326 R117
 NJW 9126J DEW DOMINO 98S
 CL 1 DOMINO 2136M
 HH MS ADVANCE 8037H

CE	BW	WW	YW	SC	MM	REA
2.9	4.5	66	106	1.1	26	0.96
MARB	CHBS	Act. BW	Adj. WW/Ratio	Adj. YW/Ratio	Adj. REA/Ratio	Adj. MARB/Ratio
0.05	126	95	696/-	1257/-	-/-	-/-

• He is our go to sire in the AI jug. Progenies are consistent for flawless pattern but have an extra dimension to them and they weigh great. Stout and soggy, the bulls are easy to find but the heifers are what really takes us back to him. Breed legend 5139 is there and it shows. A daughter raised a high seller last year to AI Inut's and it is not an accident. The number one bull in this offering for feed efficiency is his son lot 20L. All said he is top 1% REA EPD. All progenies were born here. Four sons sell.

B **YV 8Y VALLEYGROWN ET 62G** (MDF,DBF)
REF. SIRE P44269158 Calved: 2/24/19 • Tattoo: RE YV 62G

SHF WONDER M326 W18 ET
NJW 73S W18 HOMEGROWN 8Y ET
 P43214852 NJW P606 72N DAYDREAM 73S

YV 34W MAJOR MARK LAD 2Y
YV 2Y MS SUNSHINE ET 27B
 44269156 AGA 72M MISS SUNSHINE LAD 282P

KCF BENNETT 3008 M326
 SHF GOVERNESS 236G L37
 PW VICTOR BOOMER P606
 NJW 94J DEW 72N

SNS 838S MARK LAD 34W
 YV 46R MAJOR MAMA 950W
 XTC 38J SUNSHINE LAD 72M
 AGA 1916 MISS STANDARD ET 147L

CE	BW	WW	YW	SC	MM	REA
2.5	5.0	66	119	1.4	33	0.57
MARB	CHBS	Act. BW	Adj. WW/Ratio	Adj. YW/Ratio	Adj. REA/Ratio	Adj. MARB/Ratio
0.03	117	-	-/-	-/-	-/-	-/-

• He no longer needs an introduction here as we have given him the greenlight as our polled performance sire. These cattle come easy and are a good nick on every one of our low birthweight lines. He has been a superior mating for LongHaul daughters. He sires extra bone and pigment. They are uniquely uniform. First daughters this spring calved easily with above average udders. 58 calves are at 102 WI, 103 YI cement the idea they are way above average. EPD growth profile is at top 12% WW and top 3% YW. 16 sons sell.

D **CL 1 DOMINO 1235J**
REF. SIRE 44259367 Calved: 2/13/21 • Tattoo: LE 1235

HH ADVANCE 5044C ET
CL 1 DOMINO 7131E 1ET
 43810450 CL 1 DOMINETTE 3175A

CL 1 DOMINO 386A 1ET
CL 1 DOMINETTE 6162D
 43691847 CL 1 DOMINETTE 055X

CL 1 DOMINO 215Z
 HH MISS ADVANCE 1072Y ET
 CL 1 DOMINO 1161Y
 CL 1 DOMINETTE 1123Y 1ET

CL 1 DOMINO 1108Y 1ET
 CL 1 DOMINETTE 440P 1ET
 CL 1 DOMINO 860U
 CL 1 DOMINETTE 7136T 1ET

CE	BW	WW	YW	SC	MM	REA
-2.5	3.4	73	122	2.1	33	0.49
MARB	CHBS	Act. BW	Adj. WW/Ratio	Adj. YW/Ratio	Adj. REA/Ratio	Adj. MARB/Ratio
0.15	153	94	756/107	1331/106	13.29/104	2.99/103

• The EPD profile of this sire will stop you in your tracks. Seven traits in the top seven %. His disposition and composition make him a leader in this sale offering. Marked right and made right he has perfect feet. Great partnerships and friendships are valuable, and we are grateful to share him with Lowell Fisher at Spencer NE. His dam 3162 appears to have the credentials to take her mother's(55X) place at Coopers. He is her natural calf by the legendary 7131, a total performance L1 sire. Twelve sons sell.

F **HH ADVANCE 8392F ET**
REF. SIRE 43966191 Calved: 9/13/18 • Tattoo: BE 8392

HH ADVANCE 3297A ET
HH ADVANCE 5345C
 43633843 HH MISS ADVANCE 3235A

HH ADVANCE 9144W
HH MISS ADVANCE 2022Z ET
 43270777 HH MISS ADVANCE 7003T

CL 1 DOMINO 091X
 HH MISS ADVANCE 9228W
 CL 1 DOMINO 105Y
 HH MISS ADVANCE 1263Y ET

HH ADVANCE 5104R
 HH MISS ADVANCE 7142T
 CL 1 DOMINO 320N
 HH MISS ADVANCE 5139R ET

CE	BW	WW	YW	SC	MM	REA
6.6	2.8	58	98	1.3	32	0.77
MARB	CHBS	Act. BW	Adj. WW/Ratio	Adj. YW/Ratio	Adj. REA/Ratio	Adj. MARB/Ratio
0.29	153	85	779/-	1371/-	15.72/115	2.66/137

• These cattle flesh up so easy it's great. The heifers have superior udders with a boatload of milk. He has had sons lead in carcass and fed efficiency and is a sire that does it all. He had an exemplary run in Coopers donor pen with his first sons averaging 20,000. Extra pigmentation is his bonus. Three sons sell.

• Owned by Cline Herefords, Wiley, Colo.

1

1L

U44449024 Calved: 3/16/23 • Tattoo: LE 1L

B SLAMMER 50H
44258435 B LADY RIBSTONE 150Y

NJW LONG HAUL 36E ET
B MISS DELTA 952G
P44047608 B LADY RIBSTONE 31X

CL 1 DOMINO 0145X1ET
PONCA POWER LADY177
F 157K RIBSTONE 763
B MISS NEON MOON 818
CHURCHILL SENSATION 028X
NJW 79Z 10W RITA 11B
F 157K RIBSTONE 763
B SANDY ANN 140L

CE	BW	WW	YW	SC	MM	REA
MARB	CHBS	Adj. WW/Ratio	Adj. YW/Ratio	Adj. REA/Ratio	Adj. MARB/Ratio	
		675/115	935/109	11.11/101	2.12/65	

• He is special. Solid red, full pigment, and extra ordinary performance. His dam is a smaller, efficient cow. His sire was turned out with our late calving cows before he was sold and we did not need DNA for parentage. She had the last bull in 2022 and first in 2023. Number 4 RFI-3.57, WOW! Registered by sale day.



1L

5

B SLAMMER 5L

U44462777 Calved: 3/20/23 • Tattoo: LE 5L

B SLAMMER 50H
44258435 B LADY RIBSTONE 150Y

CL 1 DOMINO 314A
B PI LADY 755E
43936978 B 5110 DOMINETTE 2003Z

CL 1 DOMINO 0145X1ET
PONCA POWER LADY177
F 157K RIBSTONE 763
B MISS NEON MOON 818
CL 1 DOMINO 105Y
CL1 DOMINETTE 1116Y
CL 1 DOMINO 5110R
B MISS BALANCER 856

CE	BW	WW	YW	SC	MM	REA
MARB	CHBS	Adj. WW/Ratio	Adj. YW/Ratio	Adj. REA/Ratio	Adj. MARB/Ratio	
		585/99	848/99	10.56/96	3.49/107	

• Maternal brother to Lot 1 he is a carbon copy and should be papered by sale day. He marbled well with a -RFI finishing in the top half. Maternal brother to 2021 sale topper to Shaffer's and is all red standing on great feet and legs. He is MR Libido and I had trouble keeping him out of my cows.

6

B 1235 DOMINO 6L

44462783 Calved: 3/21/23 • Tattoo: LE 6L

CL 1 DOMINO 1235J
44259367 CL 1 DOMINETTE 6162D

NJW LONG HAUL 36E ET
B MISS DELTA 048H
P44161547 B MISS GOLDEN RATIO 878

HH ADVANCE 5044C ET
CL 1 DOMINETTE 3175A
CL 1 DOMINO 386A 1ET
CL 1 DOMINETTE 055X
CHURCHILL SENSATION 028X
NJW 79Z 10W RITA 11B
CL1 DOMINO 589C
B DOMINETTE 322A

CE	BW	WW	YW	SC	MM	REA
2.1	2.1	64	104	1.8	35	0.35
MARB	CHBS	Adj. WW/Ratio	Adj. YW/Ratio	Adj. REA/Ratio	Adj. MARB/Ratio	
0.13	119	601/102	849/99	10.03/91	3.07/94	

• Great cow family behind this conservative framed bull. Top 15 finish with a -2.33 RFI. ADG 3.92 Do more with less and use hybrid vigor to carry the ball.

7

B KINGDOM 7L

P44462789 Calved: 3/22/23 • Tattoo: LE 7L

CHURCHILL KINGDOM 128J ET
P44267937 BR VALIDATED B413 6035 7098

NJW LONG HAUL 36E ET
B MISS DELTA 156J
P44242024 B MISS FOREMOST 864

LCX PERFECTO 11B ET
DM L1 DOMINETTE 301 ET
EFBEEF BR VALIDATED B413
BR BENNETT 4R Y428 2101 6035
CHURCHILL SENSATION 028X
NJW 79Z 10W RITA 11B
B FOREMOST 24C
B PI LADY 624D

CE	BW	WW	YW	SC	MM	REA
8.9	0.7	61	94	1.6	35	0.59
MARB	CHBS	Adj. WW/Ratio	Adj. YW/Ratio	Adj. REA/Ratio	Adj. MARB/Ratio	
0.32	122	597/101	844/98	10.71/98	3.55/109	

• Kingdom has done everything we had hoped for as a heifer bull, but the number profile isn't just a projection, it appears to be real. Smooth, made in one piece, a great product out of a Long Haul heifer. Standout performance for a heifer bull.

10

B KINGDOM 10L

P44463094 Calved: 3/25/23 • Tattoo: LE 10L

CHURCHILL KINGDOM 128J ET
P44267937 BR VALIDATED B413 6035 7098

HCC SENSATION 6008 ET
B LADY REDBULL 188J
44275175 B MISS FOREMOST 853

LCX PERFECTO 11B ET
DM L1 DOMINETTE 301 ET
EFBEEF BR VALIDATED B413
BR BENNETT 4R Y428 2101 6035
CHURCHILL SENSATION 028X
CHURCHILL LADY 002X ET
B FOREMOST 24C
B PI LADY 607D

CE	BW	WW	YW	SC	MM	REA
9.5	1.7	65	104	1.4	36	0.78
MARB	CHBS	Adj. WW/Ratio	Adj. YW/Ratio	Adj. REA/Ratio	Adj. MARB/Ratio	
0.34	139	616/105	931/108	11.98/109	3.32/102	

• Herd bull alert, everything here but a picture. When you study this bull there is a little more to every dimension. He is put together so nicely, you can't even tell it's there. His dam was an exceptional, first calf heifer. With these numbers we will keep an interest.



B BIG DOMINO 11L

11

B BIG DOMINO 11L

44463100 Calved: 3/24/23 • Tattoo: LE 11L

CL 1 DOMINO 7131E 1ET
CL 1 DOMINO 1235J
 44259367 CL 1 DOMINETTE 6162D
 HH ADVANCE 5044C ET
 CL 1 DOMINETTE 3175A
 CL 1 DOMINO 386A 1ET
 CL 1 DOMINETTE 055X
 H OUTCROSS 7422 ET
B LADY OUTCROSS 928G
 44056201 B PI LADY 5017C
 GOLDEN OAK OUTCROSS 18U
 H MS 5139 ADVANCE 4207 ET
 CL 1 DOMINO 314A
 B 295 DOMINETTE 648

CE	BW	WW	YW	SC	MM	REA
0.4	3.4	65	102	1.6	32	0.50
MARB	CHBS	Adj. WW/Ratio	Adj. YW/Ratio	Adj. REA/Ratio	Adj. MARB/Ratio	
0.15	126	594/101	814/95	10.03/91	3.42/105	

• He is a bull I have admired all summer and has great potential. He is a maternal brother to last year's bull to Allnuts. His dam is a maternal sister to dam of Lot 20 our RFI giant. Zero in on the 5017 cow family to select for replacement females.

12

B BIG DOMINO 12L

44463101 Calved: 3/24/23 • Tattoo: LE 12L

CL 1 DOMINO 7131E 1ET
CL 1 DOMINO 1235J
 44259367 CL 1 DOMINETTE 6162D
 HH ADVANCE 5044C ET
 CL 1 DOMINETTE 3175A
 CL 1 DOMINO 386A 1ET
 CL 1 DOMINETTE 055X
 CL 1 DOMINO 314A
B PI LADY 602D
 43833976 B 72X DOMINETTE 442B
 CL 1 DOMINO 105Y
 CL 1 DOMINETTE 1116Y
 CL 1 DOMINO 072X
 B ROXANNE 801

CE	BW	WW	YW	SC	MM	REA
1.0	2.2	57	95	1.7	33	0.23
MARB	CHBS	Adj. WW/Ratio	Adj. YW/Ratio	Adj. REA/Ratio	Adj. MARB/Ratio	
0.22	126	569/97	841/98	9.58/87	3.35/103	

• Big, long, and stout. He is a prototype range bull. He is the widest of the 1235 sons. Cow family has been rock-solid in feed efficiency clear back to the 801 cow. A -1.94 RFI from a bull that gained and did something with it.

15

B BIG VALLEY 15L

P44463109 Calved: 3/25/23 • Tattoo: LE 15L

NJW 73S W18 HOMEGROWN 8Y ET
YV 8Y VALLEYGROWN ET 62G (MOF, DBP)
 P44269158 YV 2Y MS SUNSHINE ET 27B
 SHF WONDER M326 W18 ET
 NJW P606 72N DAYDREAM 73S
 YV 34W MAJOR MARK LAD 2Y
 AGA 72M MISS SUNSHINE LAD 282P
 NJW LONG HAUL 36E ET
B LADY DELTA 018H
 P44160939 B AMERICAN HONEY 106Y
 CHURCHILL SENSATION 028X
 NJW 79Z 10W RITA 11B
 PONCA KINGPIN
 B 295 DOMINETTE 932

CE	BW	WW	YW	SC	MM	REA
4.5	3.3	59	104	1.4	33	0.42
MARB	CHBS	Adj. WW/Ratio	Adj. YW/Ratio	Adj. REA/Ratio	Adj. MARB/Ratio	
0.01	107	599/105	893/107	10.98/102	2.71/83	

• His dam is deep flanked with extra capacity, and he has a spring of rib and shape down his top to let you know the pounds are there. His mamma is deep wide and you would never know to look at her that grass was short. Conservative stature with pounds but you will want the heifers. Big burly horned bulls like this are hard to find.

20

B OUTCROSS 20L

44463121 Calved: 3/25/23 • Tattoo: LE 20L

GOLDEN OAK OUTCROSS 18U
H OUTCROSS 7422 ET
 43799212 H MS 5139 ADVANCE 4207 ET
 BCC DOMINATOR 829F
B MISS FREEDOM 050H
 44162098 B PI LADY 5017C
 GOLDEN-OAK FUSION 3S
 GOLDEN-OAK GOD MALLORY 15M
 NJW 98S R117 RIBEYE 88X ET
 HH MISS ADVANCE 5139R ET
 BCC DOMINATOR 619D
 BCC DAFNEE 644D
 CL 1 DOMINO 314A
 B 295 DOMINETTE 648

CE	BW	WW	YW	SC	MM	REA
3.5	3.4	64	100	1.0	31	0.72
MARB	CHBS	Adj. WW/Ratio	Adj. YW/Ratio	Adj. REA/Ratio	Adj. MARB/Ratio	
0.16	134	605/106	828/99	11.03/102	3.40/104	

• I should call him inside out, because the most powerful thing this bull can do, you can't see when you walk down the bunk. He has a performance pedigree but his dam is nearly our smallest and most efficient cow. The carcass numbers stay positive and then he crushes the feed efficiency data and by a long way -5.86 RFI and has an ADG of 5.18. It is nearly impossible to tie those two pieces together like that. These are genetics that will pay you the entire time you own them. We will retain an interest.

22

B PATROL 22L

P44463123 Calved: 3/25/23 • Tattoo: LE 22L

NJW LONG HAUL 36E ET
B PAW PATROL 19H
 P44164213 B MIIS PI 797
 F FINAL TEST 722
B MISS ADVANCE PLACEMENT 130J
 P44235424 B A LADY OUTCROSS 944G
 CHURCHILL SENSATION 028X
 NJW 79Z 10W RITA 11B
 CL 1 DOMINO 314A
 B LADY EXCELL 512
 EF BEEF TFL U208 TESTED X651 ET
 F MS YORK 567
 H OUTCROSS 7422 ET
 B PI LADY 530C

CE	BW	WW	YW	SC	MM	REA
5.7	1.5	58	96	1.0	31	0.43
MARB	CHBS	Adj. WW/Ratio	Adj. YW/Ratio	Adj. REA/Ratio	Adj. MARB/Ratio	
0.25	129	507/89	/	-/-	-/-	

• He is pure heifer bull in his make-up and was small enough I chose not to send him to SAREC. He was leased out for a small group of heifers and they should not have to get up. It is a pure heifer bull pedigree. 944 is a maternal sister to lot 116. His shape is no accident. Will be trich tested clean sale day.

24

B ROUGHNECK 24L (DBP)

44463125 Calved: 3/25/23 • Tattoo: LE 24L

CHURCHILL ROUGH RIDER 719E
CHURCHILL ROUGHNECK 0280H ET
 44198621 CHURCHILL W4 LADY 770E
 HCC SENSATION 6008 ET
B MISS APRIL 1020J (DBP)
 44321703 B MISS DOMINETTE 133Y
 HH ADVANCE 5044C ET
 CHURCHILL LADY 518C
 LJS MARK DOMINO 1321
 CHURCHILL LADY 5131C ET
 CHURCHILL SENSATION 028X
 CHURCHILL LADY 002X ET
 CL 1 DOMINO 5110R
 B LADY KIRK 813

CE	BW	WW	YW	SC	MM	REA
8.7	0.1	50	82	1.3	35	0.52
MARB	CHBS	Adj. WW/Ratio	Adj. YW/Ratio	Adj. REA/Ratio	Adj. MARB/Ratio	
0.24	140	549/93	792/92	11.36/104	3.40/104	

• Jump up and grab this first son of what appears to be a great young cow in the making. He had performed as a heifer's calf but then you read the carcass numbers. These rough necks can do it all after you wean them and I recommend him for any heifers or cow work you have.

25

B BIG VALLEY 25L

P44463126 Calved: 3/25/23 • Tattoo: LE 25L

NJW 73S W18 HOMEGROWN 8Y ET
YV 8Y VALLEYGROWN ET 626
 P44269158 YV 2Y MS SUNSHINE ET 27B

SHF WONDER M326 W18 ET
 NJW P606 72N DAYDREAM 73S
 YV 34W MAJOR MARK LAD 2Y
 AGA 72M MISS SUNSHINE LAD 282P
 NJW 98S DURANGO 44U
 KT MS R117 RIB EYE 9177
 ANCHOR 11X
 B MISS WORLD 302A

KT BUILT TUFF 1010

B TUFF LADY 809F
 P44001079 B LADY ANCHOR 657D

CE	BW	WW	YW	SC	MM	REA
3.6	3.9	68	109	1.3	29	0.45
MARB	CHBS	Adj. WW/Ratio	Adj. YW/Ratio	Adj. REA/Ratio	Adj. MARB/Ratio	
0.12	118	608/103	891/104	12.38/113	3.41/104	

• The numbers say he's better than average and he's all that. Very correct in every aspect. Again, his mamma, is incredibly consistent and above average production. Nice ruggedness with good structure to these 62G sons. Imagine a set of calves with a spring of rib like that.



27

B IDEAL 27L

44463129 Calved: 3/27/23 • Tattoo: LE 27L

H FHF ADVANCE 628 ET
K&B PARAGON 9406 ET
 44072581 K&B BELLA 2192 1ET

HH ADVANCE 4075B ET
 FHF 408 RITA 21W
 K&B BANDIDO 8227U ET
 K&B SWEET SALLY 5037

MW RED RIBSTONE 63D

B MISS GO BIG RED 9000G
 44054281 B KATE 147Y

MW SIR RIBSTONE 94B
 MW MISS RIB 27B
 CHURCHILL RANCHER 592R
 B 295 DOMINETTE 807

CE	BW	WW	YW	SC	MM	REA
1.9	3.4	57	88	0.7	23	0.63
MARB	CHBS	Adj. WW/Ratio	Adj. YW/Ratio	Adj. REA/Ratio	Adj. MARB/Ratio	
0.09	125	/	804/98	10.25/91	3.65/108	

• Goggled eye bull that gets this year fire plug award. So stout, so deep, there is no reason not to love him. He will help your marbling scores and has a negative RFI. He is easy to find and has everything but extra frame, but I still like him. Dam has a very refined correct udder.



B IDEAL 27L

28

B BIG VALLEY 28L

P44463131 Calved: 3/27/23 • Tattoo: LE 28L

NJW 73S W18 HOMEGROWN 8Y ET
YV 8Y VALLEYGROWN ET 626
 P44269158 YV 2Y MS SUNSHINE ET 27B

SHF WONDER M326 W18 ET
 NJW P606 72N DAYDREAM 73S
 YV 34W MAJOR MARK LAD 2Y
 AGA 72M MISS SUNSHINE LAD 282P
 CHURCHILL SENSATION 028X
 NJW 792 10W RITA 11B
 CL 1 DOMINO 314A
 B DOMINETTE 594C

NJW LONG HAUL 36E ET

B LADY PURSUIT 903G
 44041153 B PI LADY 701

CE	BW	WW	YW	SC	MM	REA
5.5	3.7	68	116	1.6	37	0.44
MARB	CHBS	Adj. WW/Ratio	Adj. YW/Ratio	Adj. REA/Ratio	Adj. MARB/Ratio	
0.06	110	669/117	962/115	10.11/94	2.88/88	

• I am not sure anyone can out produce his mother. She is beefy with extra bone. Her first son sold top three, a full sister with a neat udder calved this year, and now 28. His weaning and yearling indexes are clearly elite. I would try as hard as you can to get him bought, he will be worth it. He has incredible extension.



B BIG VALLEY 28L



29

B 1235 DOMINO 29L

44463132 Calved: 3/27/23 • Tattoo: LE 29L

CL 1 DOMINO 7131E 1ET
 44259367 CL 1 DOMINETTE 6162D
 CHURCHILL SENSATION 028X
B SENSATIONAL MISS 722E ET
 43993462 B LADY RIBSTONE 120Y

HH ADVANCE 5044C ET
 CL 1 DOMINETTE 3175A
 CL 1 DOMINO 386A 1ET
 CL 1 DOMINETTE 055X
 UPS DOMINO 3027
 CHURCHILL LADY 7202T ET
 F 157K RIBSTONE 763
 B 303 LADY EXCEL 647

CE	BW	WW	YW	SC	MM	REA
2.7	2.3	63	102	1.8	34	0.36
MARB	CHBS	Adj. WW/Ratio	Adj. YW/Ratio	Adj. REA/Ratio	Adj. MARB/Ratio	
0.15	119	554/97	832/100	9.99/93	3.15/96	

- There is a lot of weight in his length and he has grown out nicely. 120 was a foundation cow and one of few we have flushed. If you keep heifers you need to find him.



30

B BROAD VALLEY BOY 30L

P44463133 Calved: 3/27/23 • Tattoo: LE 30L

NJW 73S W18 HOMEGROWN 8Y ET
 P44269158 YV 2Y MS SUNSHINE ET 27B
 NJW LONG HAUL 36E ET
B LADY PURSUIT 910G
 P44041228 B GOLDENRATIO LADY 718E

SHF WONDER M326 W18 ET
 NJW P606 72N DAYDREAM 73S
 YV 34W MAJOR MARK LAD 2Y
 AGA 72M MISS SUNSHINE LAD 282P
 CHURCHILL SENSATION 028X
 NJW 79Z 10W RITA 11B
 CL1 DOMINO 589C
 B MISS DOMINO 317A

CE	BW	WW	YW	SC	MM	REA
4.9	3.7	67	114	1.5	36	0.51
MARB	CHBS	Adj. WW/Ratio	Adj. YW/Ratio	Adj. REA/Ratio	Adj. MARB/Ratio	
0.06	110	667/113	997/116	11.73/107	2.98/91	

- He is a great member of the 62G team that sets the bar for a sire group. A wonderful combination of growth and maternal by the pound. The kicker here is a -2.16 RFI that puts him out in front by efficiency standards.



B GALLATIN 32L

32

B GALLATIN 32L

P44463135 Calved: 3/27/23 • Tattoo: LE 32L

NJW 73S W18 HOMEGROWN 8Y ET
 P44269158 YV 2Y MS SUNSHINE ET 27B
 B FOREMOST 24C
B MISS FOREMOST 85E
 P43933859 B PI LADY 603D

SHF WONDER M326 W18 ET
 NJW P606 72N DAYDREAM 73S
 YV 34W MAJOR MARK LAD 2Y
 AGA 72M MISS SUNSHINE LAD 282P
 EFBEEF FOREMOST U208
 B SANDYS SENSATIONAL 204Z ET
 CL 1 DOMINO 314A
 B MISS SENSATIONAL 418B

CE	BW	WW	YW	SC	MM	REA
4.8	4.1	66	116	1.4	32	0.44
MARB	CHBS	Adj. WW/Ratio	Adj. YW/Ratio	Adj. REA/Ratio	Adj. MARB/Ratio	
0.16	108	650/110	980/114	11.28/103	3.46/106	

- He is incredible. He just eats up the stats. Why do some of these good bulls not read better? He did not leave any room at the top. You read the ratios and look at the bull and you have to mark him. I think he will be our biggest bull come sale day. His dam is an extra milk cow with a near perfect udder. By the pound, he's all here. He would be great on Long Haul daughters. This is a powerful sire group.

34

B 1235 DOMMINO 34L (HYP,IEP)

44463138 Calved: 3/28/23 • Tattoo: LE 34L

CL 1 DOMINO 7131E 1ET
CL 1 DOMINO 1235J
 44259367 CL 1 DOMINETTE 6162D

HH ADVANCE 5044C ET
 CL 1 DOMINETTE 3175A
 CL 1 DOMINO 386A 1ET
 CL 1 DOMINETTE 055X
 MW SIR RIBSTONE 94B
 MW MISS RIB 27B
 UPS DESERT GOLD 4007
 B LADY SPECTRE 246Z

MW RED RIBSTONE 63D
B MISS SUPERED 978G
 44050152 B LADY GOLD 409B

CE	BW	WW	YW	SC	MM	REA
1.2	2.2	59	96	1.4	29	0.46
MARB	CHBS	Adj. WW/Ratio	Adj. YW/Ratio	Adj. REA/Ratio	Adj. MARB/Ratio	
0.17	134	516/88	779/91	11.43/104	3.70/113	

• He is one tick better for RFI(-2.18) than lot 30. Dam is a favorite cow that has WI 104 YI 103 on three calves. That is superior carcass data in this offering I would bet on him. He is soggy.

35

B 1235 DOMINO 35L

44463767 Calved: 3/28/23 • Tattoo: LE 35L

CL 1 DOMINO 7131E 1ET
CL 1 DOMINO 1235J
 44259367 CL 1 DOMINETTE 6162D

HH ADVANCE 5044C ET
 CL 1 DOMINETTE 3175A
 CL 1 DOMINO 386A 1ET
 CL 1 DOMINETTE 055X
 CL 1 DOMINO 5110R
B 5110 DOMINETTE 253Z
 43294174 B ROXANNE 801

CL 1 DOMINO 5110R
B 5110 DOMINETTE 253Z
 43294174 B ROXANNE 801

CE	BW	WW	YW	SC	MM	REA
2.3	2.3	57	92	1.6	33	0.34
MARB	CHBS	Adj. WW/Ratio	Adj. YW/Ratio	Adj. REA/Ratio	Adj. MARB/Ratio	
0.16	124	572/97	796/93	10.03/91	3.24/99	

• He is big middle and shows as much capacity as any bull in this sale. He has breed character is rugged and looks like a bull. His RFI is -1.01 and an ADG on test of 4.35 having him thread the needle very well having both gain and efficiency. His pedigree has the great cows on both sides so expect matronly heifers as well.

36

B 1235 DOMINO 36L

44463791 Calved: 3/29/23 • Tattoo: LE 36L

CL 1 DOMINO 7131E 1ET
CL 1 DOMINO 1235J
 44259367 CL 1 DOMINETTE 6162D

HH ADVANCE 5044C ET
 CL 1 DOMINETTE 3175A
 CL 1 DOMINO 386A 1ET
 CL 1 DOMINETTE 055X
 CL 1 DOMINO 314A
 CL 1 DOMINO 105Y
 CL 1 DOMINETTE 1116Y
 B SANDMAN 224M
 B MISS SPECTRE 1038L

CL 1 DOMINO 314A
B MISS PI SOCIAL 78Z
 43868312 B LADY BARPIPE 4107

CE	BW	WW	YW	SC	MM	REA
-0.1	3.3	62	102	1.7	31	0.28
MARB	CHBS	Adj. WW/Ratio	Adj. YW/Ratio	Adj. REA/Ratio	Adj. MARB/Ratio	
0.14	117	613/107	868/104	10.42/97	3.19/98	

• He has great performance ratios and comes with a high maternal recommendation. The power in him comes from the extra stretch and a big hip. Negative RFI and an ADG of 4.28. The calves will perform and female side will add value. 1235 sire group is very strong this way.



B 1235 DOMINO 36L

37

B 1235 DOMINO 37L

44463797 Calved: 3/29/23 • Tattoo: LE 37L

CL 1 DOMINO 7131E 1ET
CL 1 DOMINO 1235J
 44259367 CL 1 DOMINETTE 6162D

HH ADVANCE 5044C ET
 CL 1 DOMINETTE 3175A
 CL 1 DOMINO 386A 1ET
 CL 1 DOMINETTE 055X
 CL 1 DOMINO 314A
 CL 1 DOMINO 105Y
 CL 1 DOMINETTE 1116Y
 F 157K RIBSTONE 763
 B ROXANNE 815

CL 1 DOMINO 314A
B PI LADY 525C
 43722906 B LADY RIBSTONE 281Z

CE	BW	WW	YW	SC	MM	REA
1.0	3.0	62	101	1.7	30	0.36
MARB	CHBS	Adj. WW/Ratio	Adj. YW/Ratio	Adj. REA/Ratio	Adj. MARB/Ratio	
0.18	128	553/97	812/97	10.24/95	3.05/93	

• Dam is very feminine but has the extra bone and power to throw a stout one. He is balanced in his performance and again finishes top 20 negative RFI and beats 4 pounds ADG. That is way over average. This herd is not given every chance nutritionally to express their genetic worth but in a test like this it shows real value.

38

B BOBCAT 38L

44463801 Calved: 3/29/23 • Tattoo: LE 38L

CHURCHILL ROUGH RIDER 719E
CHURCHILL ROUGHNECK 0280H ET
 44198621 CHURCHILL W4 LADY 770E

HH ADVANCE 5044C ET
 CHURCHILL LADY 518C
 LJS MARK DOMINO 132I
 CHURCHILL LADY 5131C ET
 BR L1 ADVANCE 6017 ET
 RCR AURUM DOMET 0007I
 GH COL PATTON 20P
 B LADY ICON 3017N

RCR L1 AURUM DOMINO 0812O
B ANNETTE 533C
 43722925 B LADY PATTON 615S

CE	BW	WW	YW	SC	MM	REA
5.4	0.9	44	77	1.2	28	0.31
MARB	CHBS	Adj. WW/Ratio	Adj. YW/Ratio	Adj. REA/Ratio	Adj. MARB/Ratio	
0.11	114	517/90	784/94	9.46/88	2.91/89	

• This outcross mating to produce a great heifer for us. You win this one and her next calf is a bull. His 7422 sister is a powerful cow as 553 is full of red meat. On 7 calves she posts a 102WI index. He is ranked 23 RFI with a 3.45 ADG. Not bad for a heifer bull prospect.



B 1235 DOMINO 40L

40

B 1235 DOMINO 40L

44463809 Calved: 3/29/23 • Tattoo: LE 40L

CL 1 DOMINO 7131E 1ET
44259367 CL 1 DOMINETTE 6162D

F 157K RIBSTONE 763
B LADY RIBSTONE 31X
43154421 B SANDY ANN 140L

HH ADVANCE 5044C ET
CL 1 DOMINETTE 3175A
CL 1 DOMINO 386A 1ET
CL 1 DOMINETTE 055X
K 64H RIBSTONE LAD 157K
F 9126 DOMINETTE 417
BP 146D SANDMAN 108J
B STARLETTE 838

CE	BW	WW	YW	SC	MM	REA
-2.2	4.2	67	108	1.7	28	0.52
MARB	CHBS	Adj. WW/Ratio	Adj. YW/Ratio	Adj. REA/Ratio	Adj. MARB/Ratio	
0.10	129	598/104	853/102	11.28/105	3.40/104	

• Rock solid with perfect confirmation he is my favorite 1235. He exhibits tremendous breed character and set to his eyes. His dam was our beefie cow and a consistent producer for 12 years. He is long spined very correct top and has a tight sheath. For her age to have him perform this well is stellar.



41

B MOTOCROSSL 41L

44463811 Calved: 3/29/23 • Tattoo: LE 41L

GOLDEN OAK OUTCROSS 18U
H OUTCROSS 7422 ET
43799212 H MS 5139 ADVANCE 4207 ET

CHURCHILL SENSATION 028X
B SENSATIONAL MISS 735E ET
43993461 B LADY RIBSTONE 120Y

GOLDEN-OAK FUSION 3S
GOLDEN-OAK 60D MALLORY 15M
NJW 98S R117 RIBEYE 88X ET
HH MISS ADVANCE 5139R ET
UPS DOMINO 3027
CHURCHILL LADY 7202T ET
F 157K RIBSTONE 763
B 303 LADY EXCEL 647

CE	BW	WW	YW	SC	MM	REA
5.4	3.3	62	101	1.3	31	0.67
MARB	CHBS	Adj. WW/Ratio	Adj. YW/Ratio	Adj. REA/Ratio	Adj. MARB/Ratio	
0.12	119	579/101	901/108	11.35/105	3.34/102	

• He is beefy. He is powerful, extra timber under him, stands wide and gives extra dimension in every direction. We calved a full sister this spring and she is highly desirable, a neat smaller framed power cow. Tremendous performance numbers with breed average birth weights.



B KINGDOM 42L

42

B KINGDOM 42L

44463815 Calved: 3/29/23 • Tattoo: LE 42L

DM ALL AROUND 904G ET
CHURCHILL KINGDOM 128J ET
P44267937 BR VALIDATED B413 6035 7098

NJW LONG HAUL 36E ET
B MISS DELTA 046H
P44161544 B MISS RIGHT ON 626D

LCX PERFECTO 11B ET
DM L1 DOMINETTE 301 ET
EFBEEF BR VALIDATED B413
BR BENNETT 4R Y428 2101 6035
CHURCHILL SENSATION 028X
NJW 79Z 10W RITA 11B
SR RIGHT ON 2203 Z ET
B MISS PROFICIENT 313A

CE	BW	WW	YW	SC	MM	REA
9.4	0.9	63	101	1.6	37	0.76
MARB	CHBS	Adj. WW/Ratio	Adj. YW/Ratio	Adj. REA/Ratio	Adj. MARB/Ratio	
0.27	124	580/99	890/104	11.82/108	3.46/106	

• How high in the sale order can he go? Super confirmation, awesome young dam with good structure, and number 8 RFI -3.15. With a impressive CED of 9.4 he should be my closer.

43 B PERFORMANCE KINGDOM 43L

44463816 Calved: 3/29/23 • Tattoo: LE 43L

DM ALL AROUND 904G ET
CHURCHILL KINGDOM 128J ET
 P44267937 BR VALIDATED B413 6035 7098

LCX PERFECTO 11B ET
 DM L1 DOMINETTE 301 ET
 EFBEEF BR VALIDATED B413
 BR BENNETT 4R Y428 2101 6035

K&B PARAGON 940G ET
B LADY EXCELLENCE 185J
 44273897 B MISS PI LADY767E

H FH F ADVANCE 628 ET
 K&B BELLA 2192 1ET
 CL 1 DOMINO 314A
 B DOMINETTE 322A

CE	BW	WW	YW	SC	MM	REA
7.2	2.3	65	101	1.3	31	0.81
MARB	CHBS	Adj. WW/Ratio	Adj. YW/Ratio	Adj. REA/Ratio	Adj. MARB/Ratio	
0.35	136	602/105	889/107	11.66/108	3.81/117	

• He is so smooth, laid into the shoulder nicely. Low BW potential but I would turn him out with my cows with those performance stats. Super carcass numbers! I'd like to call him picture in a picture because he is just that pretty.

45 B ADVANCEPLUS 45L

44463819 Calved: 3/30/23 • Tattoo: LE 45L

HH ADVANCE 8132F
CHURCHILL ADVANCE 0317H ET
 44240592 CHURCHILL LADY 5191C

HH ADVANCE 6212D ET
 HH MISS ADVANCE 6040D ET
 HH ADVANCE 3022A ET
 CHURCHILL LADY 220Z

E ILR 4140B MILES G3
B MISS MILESPLUS 151J
 44242012 B MISS PI SOCIAL 782

ILR H MILES 4140B ET
 E 332A EDNA D160
 CL 1 DOMINO 314A
 B LADY BARPIPE 4107

CE	BW	WW	YW	SC	MM	REA
3.8	2.2	55	85	1.3	31	0.38
MARB	CHBS	Adj. WW/Ratio	Adj. YW/Ratio	Adj. REA/Ratio	Adj. MARB/Ratio	
0.18	128	546/95	760/91	10.38/96	3.31/101	

• If you need a heifer bull he is here. Semen interest in his sire purchased from W4 and we can document the calving ease with two crops out of him. G3 daughters are special and you are just starting to see their potential here. I don't buy cows but I bought G3's sister this fall.

48 B SET ANCHOR 48L

P44464007 Calved: 3/30/23 • Tattoo: 48L

NJW 73S W18 HOMEGROWN 8Y ET
YV 8Y VALLEYGROWN ET 626
 P44269158 YV 2Y MS SUNSHINE ET 27B

SHF WONDER M326 W18 ET
 NJW P606 72N DAYDREAM 73S
 YV 34W MAJOR MARK LAD 2Y
 AGA 72M MISS SUNSHINE LAD 282P

ANCHOR 11X
B LADYANCHOR 6014D
 P43769059 B MISS 22S ON TARGET 382A

ANCHOR 36U
 ANCHOR 43U
 SCHU-LAR ON TARGET 22S
 B MISS ADVANCE 29X

CE	BW	WW	YW	SC	MM	REA
2.6	4.1	61	120	1.1	29	0.52
MARB	CHBS	Adj. WW/Ratio	Adj. YW/Ratio	Adj. REA/Ratio	Adj. MARB/Ratio	
0.13	131	474/83	940/113	13.18/122	3.51/107	

• Every year I try to figure out what to breed this cow to and on calves 5 and 6, she's finally produced the bulls I'm looking for – big hip, square in the corners, a little extra frame – and a huge plus for anyone trying to market more pounds. He is awesome.



B SET ANCHOR 48L

49 B ROUGHNECK 49L

44464010 Calved: 3/30/23 • Tattoo: 49L

CHURCHILL ROUGH RIDER 719E
CHURCHILL ROUGHNECK 0280H ET
 44198621 CHURCHILL W4 LADY 770E

HH ADVANCE 5044C ET
 CHURCHILL LADY 518C
 LJS MARK DOMINO 1321
 CHURCHILL LADY 5131C ET

HH ADVANCE 8392F ET
B MISS ADVANCE 198J
 44276227 B 606 DOMINETTE 837

HH ADVANCE 5345C
 HH MISS ADVANCE 2022Z ET
 LW 4163 DOMINO 606D
 B PI LADY 528C

CE	BW	WW	YW	SC	MM	REA
6.7	1.3	54	86	1.5	32	0.49
MARB	CHBS	Adj. WW/Ratio	Adj. YW/Ratio	Adj. REA/Ratio	Adj. MARB/Ratio	
0.25	137	540/94	/	-/-	-/-	

• Ideal heifer bull prospect in this offering. Was not sent to SAREC. Wintered on hay with lots 22 and 129. The muscle expression, an 8392 dam, are every reason you need to trust the raw potential here. Check out his BW CE and CHB numbers.

51 B BOBCAT 51L

P44464013 Calved: 3/30/23 • Tattoo: 51L

DM ALL AROUND 904G ET
CHURCHILL KINGDOM 128J ET
 P44267937 BR VALIDATED B413 6035 7098

LCX PERFECTO 11B ET
 DM L1 DOMINETTE 301 ET
 EFBEEF BR VALIDATED B413
 BR BENNETT 4R Y428 2101 6035

LW 4163 DOMINO 606D
B 606 DOMINETTE 816F
 43929126 B LADY ANCHOR 6002D

CL1 DOMINO 4163B 1ET
 CL 1 DOMINETTE 958W 1ET
 ANCHOR 11X
 B WIRED 220Z

CE	BW	WW	YW	SC	MM	REA
4.2	2.7	66	100	1.3	33	0.65
MARB	CHBS	Adj. WW/Ratio	Adj. YW/Ratio	Adj. REA/Ratio	Adj. MARB/Ratio	
0.30	134	560/98	846/101	10.84/101	3.63/111	

• A cool dude with a #10 RFI -3.13. Grandam 6002 brings the heat for more frame super long with extra pigment. Dam 816 is more refined and has given us two replacements. When calving ease and carcass performance are together like this you have something special.

55

B MOTOCROSS 55L

44464018 Calved: 3/30/23 • Tattoo: 55L

GOLDEN OAK OUTCROSS 18U
H OUTCROSS 7422 ET
 43799212 H MS 5139 ADVANCE 4207 ET

CHURCHILL SENSATION 028X
B MISS SENSATIONAL 424B
 43620851 B MISTY ROBIN 149Y

GOLDEN-OAK FUSION 3S
 GOLDEN-OAK 60D MALLORY 15M
 NJW 98S R117 RIBEYE 88X ET
 HH MISS ADVANCE 5139R ET
 UPS DOMINO 3027
 CHURCHILL LADY 7202T ET
 GH ADAMS NORTHERN YANK ET 230U
 B 295M DOMINETTE 652

CE	BW	WW	YW	SC	MM	REA
4.4	2.4	57	84	1.2	32	0.60
MARB	CHBS	Adj. WW/Ratio	Adj. YW/Ratio	Adj. REA/Ratio	Adj. MARB/Ratio	
0.11	114	613/107	747/90	10.10/94	3.00/92	

- Straight strong top with super balance is here. We are blessed with a full sister in production this spring. Dam is a big bodied cow. Same family as lot 118.

57

B ROUGHNECK 57L

P44464020 Calved: 3/30/23 • Tattoo: 57L

CHURCHILL ROUGH RIDER 719E
CHURCHILL ROUGHNECK 0280H ET
 44198621 CHURCHILL W4 LADY 770E

NJW LONG HAUL 36E ET
B MISS DELTA 905G
 P44361357 B LADY OF YORK 764E

HH ADVANCE 5044C ET
 CHURCHILL LADY 518C
 LJS MARK DOMINO 1321
 CHURCHILL LADY 5131C ET
 CHURCHILL SENSATION 028X
 NJW 79Z 10W RITA 11B
 SHF YORK 19H Y02
 B MISS STRATEGY 958

CE	BW	WW	YW	SC	MM	REA
8.2	1.0	62	102	1.7	36	0.49
MARB	CHBS	Adj. WW/Ratio	Adj. YW/Ratio	Adj. REA/Ratio	Adj. MARB/Ratio	
0.20	131	622/106	933/109	11.48/105	3.53/108	

- I cannot offer you more than what the indexes say. Dam is refined but highly productive with a silky udder and extra pigment.



59

B IDEAL 59L

44464022 Calved: 3/31/23 • Tattoo: 59L

H FHF ADVANCE 628 ET
K&B PARAGON 940G ET
 44072581 K&B BELLA 219Z 1ET

H HOMETOWN 5343 ET
B ELAINE 917G
 44041250 B LADY GALLATIN 743E

HH ADVANCE 4075B ET
 FHF 408 RITA 21W
 K&B BANDIDO 8227U ET
 K&B SWEET SALLY 5037
 NJW 73S W18 HOMETOWN 10Y ET
 CL 1 DOMINETTE 1169Y 1ET
 CHURCHILL GALLATIN 5211C ET
 B AMERICAN HONEY 101Y

CE	BW	WW	YW	SC	MM	REA
2.8	3.4	61	93	0.8	31	0.72
MARB	CHBS	Adj. WW/Ratio	Adj. YW/Ratio	Adj. REA/Ratio	Adj. MARB/Ratio	
0.10	126	/	841/102	12.23/109	3.09/92	

- This was our best and most consistent cross of Paragon with the 180 females. The pattern of these calves is distinct, performance more than adequate, and the udders on the daughters are exquisite.



B KINGDOM 61L

61

B KINGDOM 61L

P44464027 Calved: 4/1/23 • Tattoo: 61L

DM ALL AROUND 904G ET
CHURCHILL KINGDOM 128J ET
 P44267937 BR VALIDATED B413 6035 7098

ANCHOR 11X
B LADY ANCHOR 670D
 P43833263 B 5110 DOMINETTE 241Z

LCX PERFECTO 11B ET
 DM L1 DOMINETTE 301 ET
 EFBEEF BR VALIDATED B413
 BR BENNETT 4R Y428 2101 6035
 ANCHOR 36U
 ANCHOR 43U
 CL 1 DOMINO 5110R
 B LADY BULLSEYE 529

CE	BW	WW	YW	SC	MM	REA
6.8	2.2	66	103	1.2	36	0.87
MARB	CHBS	Adj. WW/Ratio	Adj. YW/Ratio	Adj. REA/Ratio	Adj. MARB/Ratio	
0.27	143	639/109	927/108	13.42/122	3.27/100	

- I believe this bull's genetics would certainly profit this herd and we will consider keeping at very least, a semen interest in him. His dam has exceeded my expectations on every calf starting with Pinky and four of the best Long Haul calves we raised. Her 2020 LH calf topped our ribeye scan and is owned by Jason and Molly Falot. He is stout with good bones, stands out on all four corners, and has the look of a herd bull. He is more than a heifer bull but that is OK with me. He is ranked #3 RFI-3.88. He will sell early in the order.

62

B 6187 DOMINO 62L

44464026 Calved: 4/1/23 • Tattoo: 62L

HH ADVANCE 4067B ET
CL 1 DOMINO 6187D
 43691873 CL1 DOMINETTE 450B

HH ADVANCE 1013Y ET
 HH MISS ADVANCE 8255U
 CL 1 DOMINO 215Z
 CL 1 DOMINETTE 1178Y

CL 1 DOMINO 072X
B 72X DOMINETTE 451B
 43620900 B LADY EXCELL 512

CL 1 DOMINO 862U^(DL,EF)
 CL 1 DOMINETTE 5152R
 GO EXCEL L18
 B MISS HOMEMAKER 840 1ET

CE	BW	WW	YW	SC	MM	REA
2.3	2.6	59	94	1.3	29	0.24
MARB	CHBS	Adj. WW/Ratio	Adj. YW/Ratio	Adj. REA/Ratio	Adj. MARB/Ratio	
0.28	121	565/99	810/97	7.93/74	3.53/108	

• 6187 absolutely delivered as a nearly ideal match for this cow. He is deep bodied with extra extension and we may keep and use part of him. He is solid red and just gets better every day. Lucky #7 RFI -3.33 and ADG of an impressive 4.32. That's gaining power.

64

B OUTCROSS 64L

44464030 Calved: 4/1/23 • Tattoo: 64L

GOLDEN OAK OUTCROSS 18U
H OUTCROSS 7422 ET
 43799212 H MS 5139 ADVANCE 4207 ET

GOLDEN-OAK FUSION 3S
 GOLDEN-OAK 60D MALLORY 15M
 NJW 98S R17 RIBEYE 88X ET
 HH MISS ADVANCE 5139R ET

LW 4163 DOMINO 606D
B 606 DOMINETTE 837
 43933790 B PI LADY 528C

CL1 DOMINO 4163B 1ET
 CL 1 DOMINETTE 958W 1ET
 CL 1 DOMINO 314A
 B 295 DOMINETTE 962

CE	BW	WW	YW	SC	MM	REA
2.3	4.0	57	90	1.0	28	0.60
MARB	CHBS	Adj. WW/Ratio	Adj. YW/Ratio	Adj. REA/Ratio	Adj. MARB/Ratio	
0.08	122	558/97	837/100	10.98/102	3.10/95	

• Hang on because there is performance in this ride. Well above average RFI and gain both. Great cow family and a good cross here.

66

B VALLEYGROWN 66L

P44464032 Calved: 4/1/23 • Tattoo: 66L

NJW 73S W18 HOMEGROWN 8Y ET
YV 8Y VALLEYGROWN ET 626
 P44269158 YV 2Y MS SUNSHINE ET 27B

SHF WONDER M326 W18 ET
 NJW P606 72N DAYDREAM 73S
 YV 34W MAJOR MARK LAD 2Y
 AGA 72M MISS SUNSHINE LAD 282P

NJW LONG HAUL 36E ET
B MISS DELTA 9486
 P44047556 B PI LADY 510C

CHURCHILL SENSATION 028X
 NJW 792 10W RITA 11B
 CL 1 DOMINO 314A
 B LADY PROFICIENT 366A

CE	BW	WW	YW	SC	MM	REA
4.9	3.4	63	114	1.5	37	0.38
MARB	CHBS	Adj. WW/Ratio	Adj. YW/Ratio	Adj. REA/Ratio	Adj. MARB/Ratio	
0.10	110	632/107	988/115	11.14/102	3.43/105	

• You are able to buy this cross in volume with extreme quality here on sale day. I would not pass on it. Impressive consistent cow family with 366 going to W4 last winter at ten years of age as a Dam of Distinction.

68

B LEADERBOARD 68L

44464034 Calved: 4/1/23 • Tattoo: 68L

CL 1 DOMINO 0141 1ET
DH DOMINO 392A
 43459361 DH MISS ADVANCE 9156

CL 1 DOMINO 860U
 CL 1 DOMINETTE 475P
 DH ADVANCE 736
 DH DOMINETTE 7157

H HOMETOWN 5343 ET
B E-LANE 851F
 43985088 B 4102 DOMINETTE 629D

NJW 73S W18 HOMETOWN 10Y ET
 CL 1 DOMINETTE 1169Y 1ET
 CHURCHILL DOMINO 4102B
 B 5110 DOMINETTE 253Z

CE	BW	WW	YW	SC	MM	REA
6.6	2.2	63	98	1.1	38	0.43
MARB	CHBS	Adj. WW/Ratio	Adj. YW/Ratio	Adj. REA/Ratio	Adj. MARB/Ratio	
0.06	110	632/110	846/101	9.85/91	2.99/92	

• I thought he would lead this thing as a baby, and he has the maternal background to make it happen. Top 25% for gain and RFI both. He is very red and will breed it. He is the only AI calf out of this sire this year. There are a few more 392's to come.

69

B BIG VALLEY 69L

P44464035 Calved: 4/1/23 • Tattoo: 69L

NJW 73S W18 HOMEGROWN 8Y ET
YV 8Y VALLEYGROWN ET 626
 P44269158 YV 2Y MS SUNSHINE ET 27B

SHF WONDER M326 W18 ET
 NJW P606 72N DAYDREAM 73S
 YV 34W MAJOR MARK LAD 2Y
 AGA 72M MISS SUNSHINE LAD 282P

ANCHOR 29C
B MISS SAFE HARBOR 8018F
 P43980304 B MISS PROFICIENT 320A

ANCHOR 11X
 ANCHOR 2T
 EFBEEF SCHU-LAR PROFICIENT N093
 B AMERICAN HONEY 106Y

CE	BW	WW	YW	SC	MM	REA
3.1	4.1	61	109	1.0	29	0.34
MARB	CHBS	Adj. WW/Ratio	Adj. YW/Ratio	Adj. REA/Ratio	Adj. MARB/Ratio	
0.07	104	586/100	885/103	10.61/97	3.16/97	

• He has an alternate polled pedigree if you have used Long Haul heavily. His dam was sold to W4 last fall and I consider her to be an ideal patterned female having a tidy udder. There is a lot of pounds and good things that can happen here.





B KINGDOM 70L

70

B KINGDOM 70L

P44464036 Calved: 4/1/23 • Tattoo: 70L

DM ALL AROUND 904G ET
CHURCHILL KINGDOM 128J ET
 P44267937 BR VALIDATED B413 6035 7098

LCX PERFECTO 11B ET
 DM L1 DOMINETTE 301 ET
 EFBEEF BR VALIDATED B413
 BR BENNETT 4R Y428 2101 6035

CL1 DOMINO 589C
B MISS GOLDEN REAL 739
 43937023 B LADY PROFICIENT 366A

GB L1 DOMINO 177R
 CL1 DOMINETTE 1116Y
 EFBEEF SCHU-LAR PROFICIENT N093
 B LADY ROBIN 354N

CE	BW	WW	YW	SC	MM	REA
6.3	2.3	61	94	1.4	31	0.60
MARB	CHBS	Adj. WW/Ratio	Adj. YW/Ratio	Adj. REA/Ratio	Adj. MARB/Ratio	
0.32	122	542/92	817/95	11.33/103	3.70/113	

• A mating that fits the big picture. Calving ease with growth and add carcass. Same cow family as Lot 66.

71

B BOBCAT 71L

44464037 Calved: 4/2/23 • Tattoo: 71L

CHURCHILL ROUGH RIDER 719E
CHURCHILL ROUGHNECK 0280H ET
 44198621 CHURCHILL W4 LADY 770E

HH ADVANCE 5044C ET
 CHURCHILL LADY 518C
 LJS MARK DOMINO 1321
 CHURCHILL LADY 5131C ET

C 8L MR SUND0G 40U
B MISS SUNSHINE 155
 43202427 B MISS HOMEMAKER 840 1ET

C 27H SUN DOG 8L
 C 126L MISS SILVER LADY 26N
 HH HOME BUILDER
 B LADY GENETIC 78

CE	BW	WW	YW	SC	MM	REA
5.5	2.0	51	87	1.2	27	0.42
MARB	CHBS	Adj. WW/Ratio	Adj. YW/Ratio	Adj. REA/Ratio	Adj. MARB/Ratio	
0.21	129	546/93	814/95	10.38/95	3.49/107	

• Dam 155 has exceeded expectations and waiting for that great heifer did not come. Raised on her at twelve there is a lot of untapped potential and I would expect him to sire a calf crop with straight lines neat pattern and the muscle roughneck can bring.



B KINGDOM 73L

73

B KINGDOM 73L

P44464142 Calved: 4/2/23 • Tattoo: 73L

DM ALL AROUND 904G ET
CHURCHILL KINGDOM 128J ET
 P44267937 BR VALIDATED B413 6035 7098

LCX PERFECTO 11B ET
 DM L1 DOMINETTE 301 ET
 EFBEEF BR VALIDATED B413
 BR BENNETT 4R Y428 2101 6035

ANCHOR 29C
B MISS GOLDEN REAL 848
 P43933852 B LADY PROFICIENT 366A

ANCHOR 11X
 ANCHOR 2T
 EFBEEF SCHU-LAR PROFICIENT N093
 B LADY ROBIN 354N

CE	BW	WW	YW	SC	MM	REA
6.7	3.2	70	114	1.3	33	0.61
MARB	CHBS	Adj. WW/Ratio	Adj. YW/Ratio	Adj. REA/Ratio	Adj. MARB/Ratio	
0.35	126	677/115	1009/117	11.51/105	3.97/122	

• He is super smooth, heifer safe, and bred to be a herd bull. The spread in these numbers should be enough to excite anyone. As you give this bull the 360, I'm not sure you will find a hole in him.

74 B 1235 DOMINO 74L
44464143 Calved: 4/2/23 • Tattoo: 74L

CL 1 DOMINO 7131E 1ET
CL 1 DOMINO 1235J
 44259367 CL 1 DOMINETTE 6162D

HH ADVANCE 5044C ET
 CL 1 DOMINETTE 3175A
 CL 1 DOMINO 386A 1ET
 CL 1 DOMINETTE 055X

RCR L1 AURUM DOMINO 08120
SCB MISS SALLY 429B
 43620861 B STELLA 640

BR L1 ADVANCE 6017 ET
 RCR AURUM DOMET 00071
 B BULLSEYE 319N
 SCB 6052 DOMINETTE 2002M

CE	BW	WW	YW	SC	MM	REA
-0.7	2.4	50	83	1.3	26	0.45
MARB	CHBS	Adj. WW/Ratio	Adj. YW/Ratio	Adj. REA/Ratio	Adj. MARB/Ratio	
0.14	135	503/85	735/86	12.07/110	3.17/97	

• Dam is a favorite for siring the look and deserves the Good housekeeping seal of approval. The makeup on this one is no different. He is made right through the hip and hind leg. She has one more top calf for next year and he is special. Older genetics but proven. I like him.

75 B 1235 DOMINO 75L
44464144 Calved: 4/2/23 • Tattoo: 75L

CL 1 DOMINO 7131E 1ET
CL 1 DOMINO 1235J
 44259367 CL 1 DOMINETTE 6162D

HH ADVANCE 5044C ET
 CL 1 DOMINETTE 3175A
 CL 1 DOMINO 386A 1ET
 CL 1 DOMINETTE 055X

CL 1 DOMINO 314A
B PI LADY 748
 43937025 B MISS ON TARGET 378A

CL 1 DOMINO 105Y
 CL1 DOMINETTE 1116Y
 SCHU-LAR ON TARGET 225
 B MISS BALANCER 858

CE	BW	WW	YW	SC	MM	REA
1.8	2.8	60	104	1.7	32	0.30
MARB	CHBS	Adj. WW/Ratio	Adj. YW/Ratio	Adj. REA/Ratio	Adj. MARB/Ratio	
0.22	132	585/99	899/105	10.81/99	3.19/98	

• He is part of an opportunity to put together a sire group with this kind of uniformity. Dam has four calves at 104WI and 108 YI. She consistent with a superior udder.

76 B TRAILRIDGE OPEN 76L
44464145 Calved: 4/2/23 • Tattoo: 76L

NJW 73S 38W RIDGE 103C ET
NJW 139C 103C RIDGE 2546
 P44056537 NJW 149Z 88X LEXY 139C ET

NJW 76S P20 BEEF 38W ET
 NJW P606 72N DAYDREAM 73S
 NJW 98S R117 RIBEYE 88X ET
 NJW 27R 100W LEXY 149Z

CHURCHILL DOMINO 4102B
B MARY KAY 732
 43988694 AEB MISS RIBLETTE 909

CL 1 DOMINO 955W
 CHURCHILL LADY 220Z
 F 157K RIBSTONE 763
 AEB 9213 DOMINETTE 508

CE	BW	WW	YW	SC	MM	REA
2.6	3.3	61	92	1.0	33	0.23
MARB	CHBS	Adj. WW/Ratio	Adj. YW/Ratio	Adj. REA/Ratio	Adj. MARB/Ratio	
0.02	93	596/101	818/95	9.94/91	2.84/87	

• Goggled eye polled bull – His top is as wide as anybody and there isn't a hole in him. I can't imagine how easy sale day would be if they all looked like him. The bull just missed gaining 400 pounds on test so I am really puzzled on his YI data. He should be named extra, extra pigment, extra muscle. Outcross polled pedigree of the sale.



B TRAILRIDGE OPEN 76L

77 B BIG VALLEY 77L
P44464146 Calved: 4/2/23 • Tattoo: 77L

NJW 73S W18 HOMEGROWN 8Y ET
YV 8Y VALLEYGROWN ET 626
 P44269158 YV 2Y MS SUNSHINE ET 27B

SHF WONDER M326 W18 ET
 NJW P606 72N DAYDREAM 73S
 YV 34W MAJOR MARK LAD 2Y
 AGA 72M MISS SUNSHINE LAD 282P

EFBEEF SCHU-LAR PROFICIENT N093
B LADY PROFICIENT 366A
 P43514686 B LADY ROBIN 354N

BAR JZ TRADITION 434V
 GERBER 117F DIXIE 009K
 HR ROBIN HOOD 52F
 B 2033 DOMINETTE 504

CE	BW	WW	YW	SC	MM	REA
3.1	4.7	61	109	1.3	32	0.51
MARB	CHBS	Adj. WW/Ratio	Adj. YW/Ratio	Adj. REA/Ratio	Adj. MARB/Ratio	
0.08	119	635/108	962/112	13.03/119	3.37/103	

• Stretchy with the length of a well rope DOD 366 gave it her best on her last calf. He took it to the bank from there with big scan numbers and yearling stats.



78

B DOMINATE 78L

44464147 Calved: 4/3/23 • Tattoo: 78L

SR DOMINATE 308F ET
SR DOMINATE 101J
44265655 SR NITA 8106F

BCC DOMINATOR 619D
CHURCHILL LADY 1162Y ET
NICHOLS 0945 DOMINO 6100 ET
SR TAMMY 694D

CL1 DOMINO 589C
B LADY GOLDEN RATIO 881F
43941933 B LADY RIBSTONE 123Y

GB L1 DOMINO 177R
CL1 DOMINETTE 1116Y
F 157K RIBSTONE 763
B LADY BARPIPE 4107

CE	BW	WW	YW	SC	MM	REA
1.2	4.0	58	86	1.3	28	0.21
MARB	CHBS	Adj. WW/Ratio	Adj. YW/Ratio	Adj. REA/Ratio	Adj. MARB/Ratio	
0.03	90	581/99	726/84	7.34/67	2.30/70	

• He had a rough go as his dam developed a bad lump and he did not get her best effort. His sire is a big growth bull and I hope he looks like Lot 100 when he grow up.

81

B 317 ADV 81L

44464149 Calved: 4/3/23 • Tattoo: 81L

HH ADVANCE 8132F
CHURCHILL ADVANCE 0317H ET
44240592 CHURCHILL LADY 5191C

HH ADVANCE 6212D ET
HH MISS ADVANCE 6040D ET
HH ADVANCE 3022A ET
CHURCHILL LADY 220Z

E ILR 4140B MILES G3
B LADY EXTRA MILES 142
44235435 B MISS GOLDEN RATIO 745

ILR H MILES 4140B ET
E 332A EDNA D160
CL1 DOMINO 589C
B MISS SENSATIONAL 462B

CE	BW	WW	YW	SC	MM	REA
4.0	2.2	59	84	1.3	33	0.37
MARB	CHBS	Adj. WW/Ratio	Adj. YW/Ratio	Adj. REA/Ratio	Adj. MARB/Ratio	
0.14	120	619/108	767/92	9.44/88	2.76/85	

• Elite heifer bull prospect. Really keen G3 dam but wait there is more. RFI -4.25 and an ADG of 3.99.

85

B KINGDOM 85L

P44465763 Calved: 4/6/23 • Tattoo: 85L

DM ALL AROUND 904G ET
CHURCHILL KINGDOM 128J ET
P44267937 BR VALIDATED B413 6035 7098

LCX PERFECTO 11B ET
DM L1 DOMINETTE 301 ET
EFBEEF BR VALIDATED B413
BR BENNETT 4R Y428 2101 6035

LW 177R DOMINO 616D ET
B MISS SPECTACLES 969G
44047637 B DOMINETTE 322A

GB L1 DOMINO 177R
CL 1 DOMINETTE 2122 1ET
UPS DOMINO 3027
AEB MISS MEEKO 157Y

CE	BW	WW	YW	SC	MM	REA
7.4	1.6	63	94	1.3	32	0.79
MARB	CHBS	Adj. WW/Ratio	Adj. YW/Ratio	Adj. REA/Ratio	Adj. MARB/Ratio	
0.30	131	624/109	883/106	12.13/113	3.26/100	

• Best butt in the whole sale. Powerful forearm wide down the top and about as gentle as they come. Incredible numbers!

89

B VALLEYGROWN 89L (MDP)

P44468623 Calved: 4/8/23 • Tattoo: 89L

NJW 73S W18 HOMEGROWN 8Y ET
YV 8Y VALLEYGROWN ET 626
P44269158 YV 2Y MS SUNSHINE ET 27B

SHF WONDER M326 W18 ET
NJW P606 72N DAYDREAM 73S
YV 34W MAJOR MARK LAD 2Y
AGA 72M MISS SUNSHINE LAD 282P

NJW LONG HAUL 36E ET
B MISS DELTA 009H (MDP)
P44163757 B LADY KIMBALL 805

CHURCHILL SENSATION 028X
NJW 79Z 10W RITA 11B
KT SMALL TOWN KID 5051
B PI LADY 611D

CE	BW	WW	YW	SC	MM	REA
6.1	2.3	60	105	1.5	33	0.41
MARB	CHBS	Adj. WW/Ratio	Adj. YW/Ratio	Adj. REA/Ratio	Adj. MARB/Ratio	
-0.01	107	551/96	855/103	9.78/91	2.26/69	

• His dam has the most pigment of any Long Haul daughter we own and she is extreme in her femininity. That is hard to believe when you look and see just how rugged and massive this prospect is.



B IDEAL 90L

90

B IDEAL 90L

44468624 Calved: 4/8/23 • Tattoo: 90L

H FHF ADVANCE 628 ET
K&B PARAGON 9406 ET
44072581 K&B BELLA 219Z 1ET

HH ADVANCE 4075B ET
FHF 408 RITA 21W
K&B BANDIDO 8227U ET
K&B SWEET SALLY 5037

NJW LONG HAUL 36E ET
B MISS DELTA 935G
P44047490 B MISS NEON MOON 25 ET

CHURCHILL SENSATION 028X
NJW 79Z 10W RITA 11B
GH NEON 17N
B ADVANCETTE 249 608

CE	BW	WW	YW	SC	MM	REA
1.7	2.8	61	93	0.9	28	0.72
MARB	CHBS	Adj. WW/Ratio	Adj. YW/Ratio	Adj. REA/Ratio	Adj. MARB/Ratio	
0.10	129	588/103	858/103	11.94/111	3.61/111	

• I like him every day and no matter what side you are on its his good one. Super cow that looks great and delivers. The family is consistent generations deep. He is a herd bull.

91 B KINGDOM 91L

P44468625 Calved: 4/8/23 • Tattoo: 91L

DM ALL AROUND 9046 ET
CHURCHILL KINGDOM 128J ET
 P44267937 BR VALIDATED B413 6035 7098

SHF YORK 19H Y02
B LADY OF YORK 764E
 P44120865 B MISS STRATEGY 958

LCX PERFECTO 11B ET
 DM L1 DOMINETTE 301 ET
 EFBEEF BR VALIDATED B413
 BR BENNETT 4R Y428 2101 6035

MSU MF HUDSON 19H
 LOEWEN MISS P20 10W
 GH ADAMS KNIGHT ET S610
 B 295M DOMINETTE 652

CE	BW	WW	YW	SC	MM	REA
6.8	1.8	60	96	1.4	30	0.57
MARB	CHBS	Adj. WW/Ratio	Adj. YW/Ratio	Adj. REA/Ratio	Adj. MARB/Ratio	
0.31	135	510/89	813/98	9.99/93	3.43/105	

- Long and tall, you can find extra frame from a cow I think is a donor quality female. Highly recommend him for heifers.

92 B 6187 DOMINO 92L

44469345 Calved: 4/8/23 • Tattoo: 92L

HH ADVANCE 4067B ET
CL 1 DOMINO 6187D
 43691873 CL1 DOMINETTE 450B

F 157K RIBSTONE 763
B LADY RIBSTONE 120Y
 43202473 B 303 LADY EXCEL 647

HH ADVANCE 1013Y ET
 HH MISS ADVANCE 8255U
 CL 1 DOMINO 215Z
 CL 1 DOMINETTE 1178Y

K 64H RIBSTONE LAD 157K
 F 9126 DOMINETTE 417
 B EXCELL 303N
 JAB 629 ADVANCETTE 17L

CE	BW	WW	YW	SC	MM	REA
4.0	3.8	71	108	1.6	30	0.38
MARB	CHBS	Adj. WW/Ratio	Adj. YW/Ratio	Adj. REA/Ratio	Adj. MARB/Ratio	
0.27	126	676/118	896/107	10.19/95	3.46/106	

- Last calf from 120Y and he gets better every day. She was a herd bulls' mother and he has the gain with -1.10 RFI and an ADG 4.30. Lots of frame and a big hip here with loads of red on him. 6187 was an AI sire chosen for marbling and maternal.

93 B MILESPLUS 93L

44469347 Calved: 4/9/23 • Tattoo: 93L

ILR H MILES 4140B ET
E ILR 4140B MILES 63
 44012981 E 332A EDNA D160

CL 1 DOMINO 314A
B PATRICIA PI 615D
 43833977 B 72X DOMINETTE 451B

C MILES MCKEE 2103 ET
 BOYD E70 QUEEN 0118
 ILR HOMETOWN 332A ET
 ILR 156T IRON LADY 486B ET

CL 1 DOMINO 105Y
 CL1 DOMINETTE 1116Y
 CL 1 DOMINO 072X
 B LADY EXCELL 512

CE	BW	WW	YW	SC	MM	REA
3.1	3.5	54	92	1.3	31	0.42
MARB	CHBS	Adj. WW/Ratio	Adj. YW/Ratio	Adj. REA/Ratio	Adj. MARB/Ratio	
0.16	128	615/104	876/102	10.64/97	2.99/92	

- He is the bull for a set of black or red cows that need to stretch it out. Correctly uddered cow she had six calves WI 101 YI 101 and performs above average.

94 B MILESPLUS 94L

44469350 Calved: 4/10/23 • Tattoo: 94L

ILR H MILES 4140B ET
E ILR 4140B MILES 63
 44012981 E 332A EDNA D160

BCC DOMINATOR 829F
B DOMINATRIX 063H
 44163733 B PI LADY 701

C MILES MCKEE 2103 ET
 BOYD E70 QUEEN 0118
 ILR HOMETOWN 332A ET
 ILR 156T IRON LADY 486B ET

BCC DOMINATOR 619D
 BCC DAFNEE 644D
 CL 1 DOMINO 314A
 B DOMINETTE 594C

CE	BW	WW	YW	SC	MM	REA
4.8	3.2	61	99	1.3	34	0.68
MARB	CHBS	Adj. WW/Ratio	Adj. YW/Ratio	Adj. REA/Ratio	Adj. MARB/Ratio	
0.16	142	639/112	893/107	12.48/116	2.97/91	

- Anybody need to add pounds or frame this bull could set your world on fire. He sits out on every corner square with big feet and lots of bone underneath him. Looks like he'll really be able to travel a lot of travel of lotta country. Big CHB.

97 B BIG VALLEY 97L

P44468614 Calved: 4/10/23 • Tattoo: 97L

NJW 73S W18 HOMEGROWN 8Y ET
YV 8Y VALLEYGROWN ET 626
 P44269158 YV 2Y MS SUNSHINE ET 27B

NJW LONG HAUL 36E ET
B LADY DELTA 970G
 44047638 B MARY KAY 732

SHF WONDER M326 W18 ET
 NJW P606 72N DAYDREAM 73S
 YV 34W MAJOR MARK LAD 2Y
 AGA 72M MISS SUNSHINE LAD 282P

CHURCHILL SENSATION 028X
 NJW 792 10W RITA 11B
 CHURCHILL DOMINO 4102B
 AEB MISS RIBLETTE 909

CE	BW	WW	YW	SC	MM	REA
4.1	2.8	57	103	1.4	33	0.39
MARB	CHBS	Adj. WW/Ratio	Adj. YW/Ratio	Adj. REA/Ratio	Adj. MARB/Ratio	
0.07	108	523/91	832/100	10.15/94	3.44/105	

- This the bull that's going to sire grow. Expect progeny to add pounds and stature. He was orphaned last fall, and it looks like I indexed him anyway. Lot 76 cow family.

99 BERRYS DOMINO 99L

44466714 Calved: 4/11/23 • Tattoo: 99L

HH ADVANCE 7156E ET
CL 1 DOMINO 91086 1ET
 44011567 CL 1 DOMINETTE 9184W

CL 1 DOMINO 553C
CL 1 DOMINETTE 729E
 43800325 CL 1 DOMINETTE 437B

HH ADVANCE 3297A ET
 HH MISS ADVANCE 1056Y ET
 CL 1 DOMINO 461P 1ET
 L1 DOMINETTE 520

GB L1 DOMINO 177R
 CL 1 DOMINETTE 1146Y
 CL 1 DOMINO 216Z 1ET
 CL 1 DOMINETTE 284Z

CE	BW	WW	YW	SC	MM	REA
8.0	1.3	55	80	1.1	28	0.42
MARB	CHBS	Adj. WW/Ratio	Adj. YW/Ratio	Adj. REA/Ratio	Adj. MARB/Ratio	
0.18	134	509/87	732/85	10.50/96	3.15/96	

- He is a straight line one Cooper bred prospect I really like the way he can move like a cat and appears to have the structure to travel and hold it together. His dam got sick on us after she calved and I am sure she was raising bigger calves in Montana. She has bred back and is still with us. She is a big cow and expect more grow than you see.



100

B DOMINANT 100L

44468616 Calved: 4/11/23 • Tattoo: 100L

SR DOMINATE 308F ET
SR DOMINATE 101J
 44265655 SR NITA 8106F
 NJW LONG HAUL 36E ET
B MISS DELTA 032H
 P44161529 B LADY ANCHOR 6002D

BCC DOMINATOR 619D
 CHURCHILL LADY 1162Y ET
 NICHOLS 0945 DOMINO 6100 ET
 SR TAMMY 694D
 CHURCHILL SENSATION 028X
 NJW 79Z 10W RITA 11B
 ANCHOR 11X
 B WIRED 220Z

CE	BW	WW	YW	SC	MM	REA
2.8	3.8	71	109	1.4	38	0.45
MARB	CHBS	Adj. WW/Ratio	Adj. YW/Ratio	Adj. REA/Ratio	Adj. MARB/Ratio	
0.10	108	697/118	915/107	9.51/87	3.18/97	

• He is rugged, with lots of timber, and an ideal fit for anyone who sells their calves by the pound. He's not pretty, but pretty awesome across the scales.

104

BERRYS FINEST104L

44469360 Calved: 4/13/23 • Tattoo: 104L

BR 58Y STANDARD 213B
BR 213B GIBSON'S FINEST 234E
 44269159 BR 15Z LADY ET 153C
 BCC DOMINATOR 829F
B DOMINATRIX 043H
 44161539 B MISS SENSATIONAL 402B

BR 4W STANMORE 58Y
 BR 52U SILVER DOMINO 145Z
 BR 9279 EXTRA DEEP 15Z
 DBHR 68J STANDARD 155S
 BCC DOMINATOR 619D
 BCC DAFNEE 644D
 CHURCHILL SENSATION 028X
 B L1 DOMINETTE 278Z

CE	BW	WW	YW	SC	MM	REA
6.5	1.9	52	90	0.8	31	0.62
MARB	CHBS	Adj. WW/Ratio	Adj. YW/Ratio	Adj. REA/Ratio	Adj. MARB/Ratio	
0.25	143	604/105	936/112	12.89/120	3.89/119	

• A broad muscular prospect with great pigment eye set and bred character. He has capacity like his mom and will breed it. He is as good as the numbers. 234 was an always in good condition sire that could work and keep his flesh and I see this bull.

106

B DOMINATOR 106L

44469368 Calved: 4/13/23 • Tattoo: 106L

BCC DOMINATOR 619D
BCC DOMINATOR 829F
 43962866 BCC DAFNEE 644D
 CL 1 DOMINO 314A
B PI LADY 778E
 43936958 B MISTY ROBIN 109Y

CL 1 DOMINO 215Z
 BCC MISS BELL 206Z
 BCC L1 DOMINO 489B
 BCC L1 DOMINETTE 498B
 CL 1 DOMINO 105Y
 CL1 DOMINETTE 1116Y
 GH ADAMS NORTHERN YANK ET 230U
 B 295 DOMINETTE 923

CE	BW	WW	YW	SC	MM	REA
4.7	2.1	60	98	0.9	33	0.40
MARB	CHBS	Adj. WW/Ratio	Adj. YW/Ratio	Adj. REA/Ratio	Adj. MARB/Ratio	
0.27	134	610/104	890/104	10.35/94	3.28/100	

• This bull has all the performance his sire transmitted so well and has done it all. More extension but an efficient gainer. RFI-2.25 and ADG 4.03 late in the sale but all here. Dam is a favorite Pi daughter with a top udder

107

107L

U44469369 Calved: 4/14/23 • Tattoo: 107L

HH ADVANCE 5345C
HH ADVANCE 8392F ET
 43966191 HH MISS ADVANCE 2022Z ET

PONCA 0145X DOMINO 531
B 531 DOMINETTE 028H
 44258443 B PI LADY 656D

HH ADVANCE 3297A ET
 HH MISS ADVANCE 3235A
 HH ADVANCE 9144W
 HH MISS ADVANCE 7003T
 CL 1 DOMINO 0145X 1ET
 PONCA POWER LADY 177
 CL 1 DOMINO 314A
 B 295 DOMINETTE 973

CE	BW	WW	YW	SC	MM	REA
3.6	2.9	54	87	1.2	31	0.56
MARB	CHBS	Adj. WW/Ratio	Adj. YW/Ratio	Adj. REA/Ratio	Adj. MARB/Ratio	
0.19	134	562/98	782/94	11.31/105	3.21/98	

• Mom is smaller cow so expect these to be smaller more efficient cattle. Heifers should be special and I would say he would work on heifers. Rea index 105 so there is meat in there.

109

B BIG VALLEY 109L

P44469371 Calved: 4/16/23 • Tattoo: LE 109L

NJW 73S W18 HOMEGROWN 8Y ET
YV 8Y VALLEYGROWN ET 62G
 P44269158 YV 2Y MS SUNSHINE ET 27B

NJW LONG HAUL 36E ET
B MISS DELTA 940G
 44047501 B LADY ANCHOR 683D

SHF WONDER M326 W18 ET
 NJW P606 72N DAYDREAM 73S
 YV 34W MAJOR MARK LAD 2Y
 AGA 72M MISS SUNSHINE LAD 282P
 CHURCHILL SENSATION 028X
 NJW 79Z 10W RITA 11B
 ANCHOR 11X
 B WHATS FOR DINNER 325A

CE	BW	WW	YW	SC	MM	REA
4.0	3.8	70	121	1.5	37	0.59
MARB	CHBS	Adj. WW/Ratio	Adj. YW/Ratio	Adj. REA/Ratio	Adj. MARB/Ratio	
0.07	119	655/114	968/116	12.58/117	3.37/103	

• Up headed, elite range bull prospect from a dam that has extra frame. He is made very correctly with super bone, and I would call him a winner.

116

B SUPER ADVANCE 116L

44469378 Calved: 4/20/23 • Tattoo: LE 116L

HH ADVANCE 5345C
HH ADVANCE 8392F ET
 43966191 HH MISS ADVANCE 2022Z ET

CL 1 DOMINO 314A
B PI LADY 530C
 43722912 B MISS 52X DOMINETTE 327A

HH ADVANCE 3297A ET
 HH MISS ADVANCE 3235A
 HH ADVANCE 9144W
 HH MISS ADVANCE 7003T
 CL 1 DOMINO 105Y
 CL1 DOMINETTE 1116Y
 CL 1 DOMINO 052X 1ET
 B MISS MOM 924

CE	BW	WW	YW	SC	MM	REA
5.8	2.1	51	82	1.2	35	0.39
MARB	CHBS	Adj. WW/Ratio	Adj. YW/Ratio	Adj. REA/Ratio	Adj. MARB/Ratio	
0.26	130	605/106	822/99	9.23/86	3.33/102	

• What a beast, big and loose coupled he is backed by an extra milk cow family, and I would certainly expect him to pass it on. Big middled, deep sided, and very masculine. You'll get everything you hoped for out of this big guy. RFI -1.12 and ADG 5.0

118

B G FORCES 118L

44469380 Calved: 4/21/23 • Tattoo: LE 118L

ILR H MILES 4140B ET
E ILR 4140B MILES G3
 44012981 E 332A EDNA D160

CL1 DOMINO 589C
B MISS GOLDEN RATIO 866
 43941888 B MISTY ROBIN 149Y

C MILES MCKEE 2103 ET
 BOYD E70 QUEEN 0118
 ILR HOMETOWN 332A ET
 ILR 156T IRON LADY 486B ET
 GB L1 DOMINO 177R
 CL1 DOMINETTE 1116Y
 GH ADAMS NORTHERN YANK ET 230U
 B 295M DOMINETTE 65Z

CE	BW	WW	YW	SC	MM	REA
1.5	5.1	64	106	1.2	30	0.53
MARB	CHBS	Adj. WW/Ratio	Adj. YW/Ratio	Adj. REA/Ratio	Adj. MARB/Ratio	
0.16	130	667/113	967/113	11.61/106	3.10/95	

• A performance giant with a maternal background that will sire elite replacement females. I give a cow no higher marks than his mother for her extension, udder, and repeatability. He is easy to find. Number9 RFI at -3.15 and has an ADG of 4.17. Whoever feeds these cattle should make money.

BALDIE HEIFERS bred to BEEF 360 SIRE MILLARS DUKE 816

- Bred AI 6/30/24, then trucked to Walden July 1.
- 14 heifers bred AI or first heat
- Clean up our black bulls or CL 1 DOMINO 345L (44459595)
- Cooper's number one CED prospect last spring.



BALDY HEIFERS

121

B SUPER ADVANCE 121L

44469382 Calved: 4/23/23 • Tattoo: LE 121L

HH ADVANCE 5345C

HH ADVANCE 8392F ET

43966191 HH MISS ADVANCE 2022Z ET

CL 1 DOMINO 314A

B PI LADY 794

43868323 B DOMINETTE 568C

HH ADVANCE 3297A ET

HH MISS ADVANCE 3235A

HH ADVANCE 9144W

HH MISS ADVANCE 7003T

CL 1 DOMINO 105Y

CL1 DOMINETTE 1116Y

CL 1 DOMINO 052X 1ET

B MISTY ROBIN 149Y

CE	BW	WW	YW	SC	MM	REA
5.8	2.2	49	84	1.2	33	0.57
MARB	CHBS	Adj. WW/Ratio	Adj. YW/Ratio	Adj. REA/Ratio	Adj. MARB/Ratio	
0.29	146	539/94	782/94	11.66/108	3.73/114	

- This cow family produces well, and we have an outcross 7422 heifer in production. 8392 has been a great nick for the Pi daughters and his scan numbers agree.

123

B BIG VALLEY 123L (MDP)

P44469384 Calved: 4/23/23 • Tattoo: LE 123L

NJW 73S W18 HOMEGROWN 8Y ET

YV 8Y VALLEYGROWN ET 62G

P44269158 YV 2Y MS SUNSHINE ET 27B

KT SMALL TOWN KID 5051

B MISS SMALL TOWN KID 814

P44001078 B LADY ANCHOR 670D

SHF WONDER M326 W18 ET

NJW P606 72N DAYDREAM 73S

YV 34W MAJOR MARK LAD 2Y

AGA 72M MISS SUNSHINE LAD 282P

NJW 73S W18 HOMETOWN 10Y ET

KT MS 0124 TIMES A WASTIN 2086

ANCHOR 11X

B 5110 DOMINETTE 241Z

CE	BW	WW	YW	SC	MM	REA
5.6	3.5	66	115	1.2	31	0.81
MARB	CHBS	Adj. WW/Ratio	Adj. YW/Ratio	Adj. REA/Ratio	Adj. MARB/Ratio	
0.13	148	605/103	906/105	13.49/123	3.44/105	

- We call him baby pinky. His dam was sold to W4 last fall and they have both Sherman and Standfield embryo by her. Slightly smaller in his stature, he is the biggest ribeye bull in this bunch and no one is wider than his momma.



B BIG VALLEY 123L

124

B BIG VALLEY 124L

P44469385 Calved: 4/24/23 • Tattoo: 124L

NJW 73S W18 HOMEGROWN 8Y ET

YV 8Y VALLEYGROWN ET 62G

P44269158 YV 2Y MS SUNSHINE ET 27B

ANCHOR 11X

B LADY ANCHOR 683D

P43833552 B WHATS FOR DINNER 325A

SHF WONDER M326 W18 ET

NJW P606 72N DAYDREAM 73S

YV 34W MAJOR MARK LAD 2Y

AGA 72M MISS SUNSHINE LAD 282P

ANCHOR 36U

ANCHOR 43U

EFBEEF M821 BEEF EATER U332

B RAMONA 905

CE	BW	WW	YW	SC	MM	REA
1.4	3.7	64	107	1.1	33	0.42
MARB	CHBS	Adj. WW/Ratio	Adj. YW/Ratio	Adj. REA/Ratio	Adj. MARB/Ratio	
0.07	110	562/95	802/93	11.31/105	3.21/98	

- He is the last of the 62Gs, powered by a Dam of Distinction. He is deep sided, deep flanked, with full pigment and great hair. He is a heavy bone hitter that everyone is going to find.



B BIG VALLEY 124L

The Berry's

3049 County Rd. 225
Cheyenne, WY 82009

2024 **The Berry's**
HEREFORD BULL SALE

Selling

70 BULLS

18 Bred Baldy Heifers

Monday, November 25, 2024

**WHERE
COWMEN
BUY BULLS**