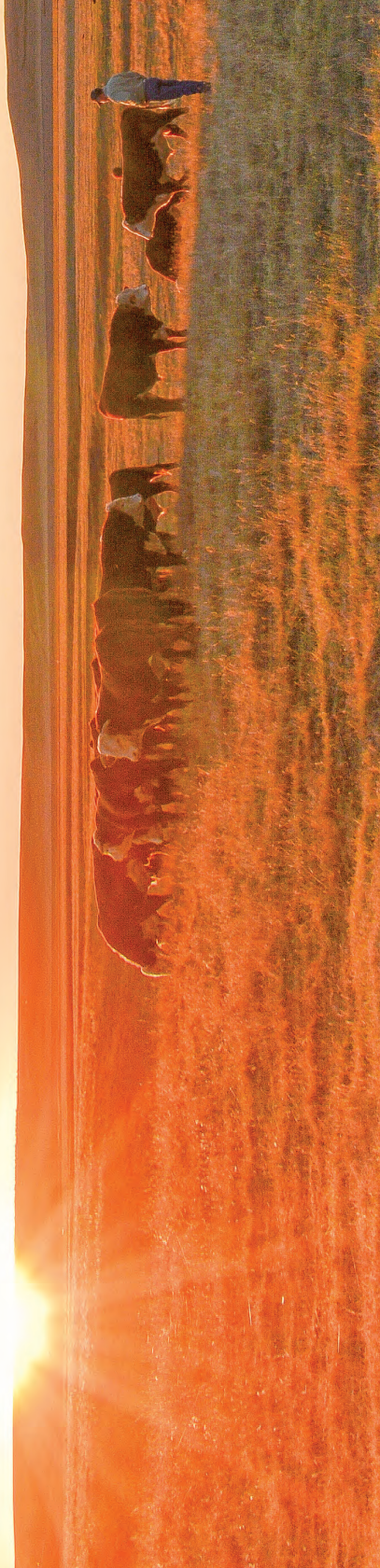




2024 SOUTH DAKOTA HEREFORD DIRECTORY





Annual Production

SALE

February 12, 2024

February 10, 2025



Fall Female
SALE

October 5, 2024

October 4, 2025

Fawcett's
ELMCREEKRANCH
Rec Heights, South Dakota

Keith, Cheryl & Matt
605-870-0161 - Keith cell

Dan, Kyla, Hollis & Ivy
605-870-6172 - Dan cell

Weston, Kris, Falon, Jensen & Marty Kusser
605-478-0077 - Weston cell

Semen Store at **www.fawcettselmcreekranch.com**

RAUSCH HEREFORDS

EST. 1946

66th Annual Bull & Female Sale

FEBRUARY 19, 2024 • PRESIDENT'S DAY

AT THE RANCH NEAR HOVEN, SD

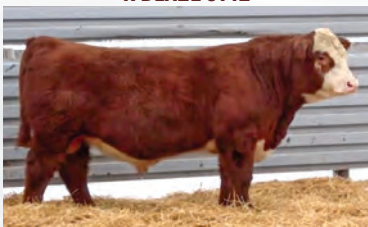
165 BULLS & 230 HEIFERS SELL

RV VALOR 9444G ET



CED +8.0 WW 64 YW 94 BMI 477 CHB 173

R BLAZE 5142



CED +1.6 WW 76 YW 125 BMI 475 CHB 142

H TIMELESS 2236 ET



CED +2.8 WW 84 YW 139 BMI 448 CHB 163

WHITEHAWK R GOVERNOR 413H



CED +5.1 WW 72 YW 123 BMI 551 CHB 215

#1 DAMS OF DISTINCTION HERD

FERTILITY • LONGEVITY • CONSISTENCY • PERFORMANCE

SHANNON RAUSCH

605-769-0203

JACOB RAUSCH

605-769-0552

PETER RAUSCH

605-281-0471

PRIVATE TREATY BULLS & FEMALES AVAILABLE YEAR-ROUND!

14831 HEREFORD RD • HOVEN, SD 57450 | RAUSCHHEREFORDS.COM

2024 South Dakota Hereford Directory



76TH EDITION
2024 SOUTH DAKOTA
HEREFORD DIRECTORY

ISSUE DATE: DEC. 21, 2023

PUBLISHED ANNUALLY BY
SOUTH DAKOTA HEREFORD ASSOCIATION

AD DESIGN & PRODUCTION BY:

Hereford America • 605/866-4495 • www.HerefordAmerica.com

Design & Production: Robin Engel & Jill Hotchkiss

Cover photo by Kyla Fawcett
Fawcett's Elm Creek Ranch, Ree Heights

KNIPPLING HEREFORD

Online Bull & Female Sale

Bidding Closes

SUN., JANUARY 21, 2024

at 2 p.m. CST

SELLING 65 BULLS

PLUS 200 F-1 Baldy Replacement Heifers

Racehorse style on www.TheLivestockLink.com

See websites for instructions.

The Livestock
Link
www.TheLivestockLink.com



Bulls can be viewed at any time.

See videos on www.knipplinghereford.com or www.TheLivestockLink.com



KNIPPLING HEREFORD

Randy Knippling: 605/293-3493 - 605/680-3185 (c)

Garin Haak: 605/293-3289 - 605/680-4637 (c)

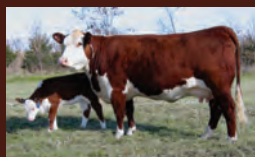
Catalogs upon request or on: WWW.KNIPPLINGHEREFORD.COM

A Singular Focus

Since 1975,
our mission has remained the same...



...to produce quality Hereford seedstock
for the commercial cattle industry.



Mike C. Fink
43610 SD Hwy 42
P.O. Box 184
Bridgewater, SD 57319
Home 605-729-2515
Mike's Cell 605-999-2075

E-mail: finklaw@unitelsd.com

<https://sites.google.com/site/finkpolledherefords/home>

FINK
POLLED HEREFORDS

*High-quality Hereford bulls
for sale by private treaty.*

SOUTH DAKOTA HEREFORD ASSOCIATION



2024 Board of Directors

President, Matt Zens
 Vice President, Jacob Rausch
 Jeff Gerlach
 Erik Scott
 Cody Williams
 Brooke Bieber
 Michael Blume



Matt Zens
 President
 605/310-5782



Jacob Rausch
 Vice President
 605/769-0552

Manager: Shannon Marshall

605/520-4607
 24588 411th Ave.
 Mitchell SD 57301

manager@southdakotaherefords.org

@SouthDakotaHerefordAssociationInc



*SDHA Manager Shannon Marshall and President Matt Zens
 after a successful SD Excellence Sale.*

UPCOMING EVENTS

January 31, 2024
 Black Hills Stock Show
 Hereford Show & Sale
 Rapid City, SD

February 7, 2024
 South Dakota Hereford
 State Show & Sale
 Watertown, SD

February 15, 2024
 Hereford Influence
 Feeder Calf Sale
 Mitchell, SD

June 8-9, 2024
 South Dakota Junior
 Hereford Field Day
 Sioux Empire Fairgrounds, Sioux
 Falls, SD

July 6-12, 2024
 Junior National Hereford Expo
 Grand Island, NE

July 24-28, 2024
 Summer Spotlight Show
 Huron, SD

Date to be announced:
 Jr. Special & Futurity Shows

August 20-24, 2024
 DakotaFest Ribeye
 Sandwich Booth
 Mitchell, SD

August 29, 2024
 Hereford Open Show
 South Dakota State Fair
 Huron, SD

November 8, 2024
 SDHA Annual Meeting & Banquet
 Brookings, SD

November 9, 2024
 SD Excellence Sale
 Brookings, SD

*Thank you,
Genex and Hoffman Ranch,
for selecting On Demand.*



Kate Roberts

GENEX

HOFFMAN RANCH
Bringing Back Balance

75th Annual Sale • Tues., February 20, 2024

2-Year-Old Bulls • Yearling Bulls • Bred Heifers

Fall Calving Cow Herd Complete Dispersion

**J
J
Z** **BAR
JZ
RANCHES**

Don & Peg Silverberg
Seth & Bridget Silverberg
Holabird, SD
605/870-2169 Seth
605/870-1302 Don
605/852-2966 Office
cattle@barjz.com
www.barjz.com



South Dakota Junior Hereford Association



SDJHA Board:

Devon Moore - President
Chance Blum - President-Elect
Jayna Blume - Secretary
Ireland McAreavy - Treasurer

Kyla Peskey - Reporter
Ashlyn Roudabush - Director
Natalie Marshall - Director
Riley Rasmussen - Director



Junior Advisors:

Lane Peterson
(605) 870-6220

Calah Covey
(605) 840-0951

Dawn Covey
(605) 840-1334

Emily Peterson
(515) 443-4465

Lindsey Wolles
(605) 496-2487

Reach the South Dakota Junior Hereford Advisors at SDJRHereford@gmail.com

UPCOMING EVENTS

June 8-9, 2024
South Dakota Junior Hereford Field Day
Sioux Empire Fairgrounds,
Sioux Falls, SD

July 6-12, 2024
Junior National Hereford Expo
Grand Island, NE

July 24-28, 2024
Summer Spotlight Show
Huron, SD

Date To Be Announced Later:
Jr. Special & Futurity Shows



QUEEN - Ireland McAreavy



Princess - Mallory Gant



Sweetheart - Shaelee Jensen

YOU CAN HAVE IT ALL!

CED 10.2 BW -1.5 WW 87 YW 129 Milk 38 REA .66 Marb .32 CHB\$ 136



RST Final Print 0016 • Reg. #: 44178105

Final Print is the #1 bull in the breed for a combination of calving ease, low birth weight and high growth. He ranks in the top 1% of the breed for weaning and yearling growth AND in the top 2% of the breed for light birth weight! His calves have topped sales all across the US this fall.

Annual Bulls and Breds Sale held January 22, 2024
Fall Female and Frozen Genetics Sale in October 2024

Both held with Delaney Herefords

ATKINS
HEREFORDS

*Now located 4 1/2 miles west and 1/4 south
of Exit #73 on I-29 just south of Sioux Falls.*

Pete & Laura Atkins
27132 SD Hwy 17 • Tea, SD 57064
605/351-9847 • petea15@gmail.com
www.atkinsherefords.com

We stress performance, muscle and moderate birth weight with good numbers.

— 2023 Sires —

CED 11.3
BW -0.5
WW 70
YW 112
M 42
M&G 77
REA .59
Marb .54
CHB \$175



Behm 100W Cuda 504C

43636764

9-trait EPD leader

CED 2.1
BW 1.6
WW 65
YW 98
M 35
M&G 68
REA 1.00
Marb 1.20
CHB \$218



EFBEEF BR Validated B413

43558667

11-trait EPD leader

23 of their sons sell! Mid-March 2024

Give us a call for more information

**Most EPDs in our herd are
over breed average with
outstanding figures for
YW, REA, CHB and BMI!**

CED 0.8
BW 3.2
WW 69
YW 117
M 24
M&G 59
REA 1.07
Marb .57
CHB \$199



SHF Foresight B413 F158

43894968

10-trait EPD leader

— Other Sires —

ECR 173 Endure 9142

44061996

RV Valor Lad 1962

44279195

RV Endurance 1480J

44300864

Bar JZ Vista 305J

44248291

— 2023 Calf Crop —

	Range		Median
CHB	184	110	150
BMI	519	332	414
CED	14	8.0	7.9
BW	-.6	6.5	1.6
WW	82	49	65
YW	136	82	107
Fert	25	11.6	20.5
REA	1.16	.21	.77
Marb	.36	.17	.22
Udder	1.5	1.10	1.3
Teat	1.5	.9	1.3

For more information contact:



TRICKY'S HEREFORDS

44132 234th St.
Winfred, SD 57076

Dick & Betty Wettlaufer
rwettlaufer@triotel.net

(605) 485-2648
C: (605) 270-3465

www.TrickysWhiteFaces.com

Field Representative for the Midwest Region #3
Kansas, Minnesota, Nebraska, and South Dakota

Aaron Friedt

701-590-9597, afriedt@hereford.org
P.O. Box 293, Mott, ND 58646



Give me a call if you are interested in:

- *Placing an ad in the Hereford World/Baldy Advantage*
- *Creative Services projects including sale catalogs, postcards, brochures and flyers*
- *Assistance in marketing your Hereford seedstock and commercial females*
- *Buying or selling Hereford-influenced feeder calves*
- *Marketing cattle through the CHB program*



11500 N. Ambassador Dr., Suite 410
Kansas City, MO 64153
816-842-3757 / www.hereford.org

FOR SALE BY PRIVATE TREATY YEARLING AND TWO-YEAR-OLDS

Sire groups represented:

HH Advance 0074 · HH Advance 0159

HH Advance 8010 · HH Advance 8071

Churchill Domino 160 · UPS 215Z Domino 7342

Among others

*High Quality Genetics
at an Affordable Price*

ZENS

HEREFORDS

24480 432nd Ave.,

Canova, SD 57321

605/523-2655

mattzens@yahoo.com

WWW.ZENSHHEREFORDS.COM





Leola, South Dakota

Private Treaty Sales



2024 HERD SIRES

- YV Designer 57G
- YV Silver Creek 26J
- SR Turning Point 1437E
- SR Dominator 1449G
- BHF 4053 Highroller 104J
- BCC Harold 152J
- Bar Star Connery 007

Colin & Mary Beth & Miles HOFFMAN

11341 357th Ave. • Leola, SD 57456 • (605) 216-7506 or (605) 277-5048

www.hoffmanherefords.com

CATTLE AVAILABLE

BULLS PRIVATE TREATY || WATERTOWN FARM SHOW || BROOKINGS EXCELLENCE SALE



BLACKTOP ENDURE 1714 • REG # 44270204



JDH 9Y LEADER 6964 65F ET • REG # 43950900



ECR CHEZ LI8 SENSATION 7076 ET • REG # 43859746

OTHER SIRES:

- NJW 98S RI17 RIBEYE 88X ET • REG # 43094146
- NJW 84B 4040 FORTIFIED 238F • REG # 43943448
- UPS ENTICE 9365 ET • REG # 44058137
- JDH 11B STUD 3134 63E • REG # 43782967

LAIBLE HEREFORDS

43703 SD Hwy 34, Howard, SD 57349
 John & Wanda Laible 605-579-0072
 Landon, Abby & Whitley Laible 605-579-0148
 Roger & Renee Laible || David & Laura Laible
 Camren Laible

RAINBOW Herefords

Selling in
 SD Excellence Sale,
 Cornhusker Classic,
 GoPher the Purple &
 Watertown

**Cattle For Sale
 at the Farm**



New Herd Sires

- Daybreak 247
- JDH 73F 21G Prominent 5K

Other Herd Sires

- ABC Ribeye Buster 414
- RH Lockwood 025
- MC Bojangles 08ET



Also selling registered
 Quarter Horses...



... and Corgis.

RAINBOW HEREFORDS

30734 456th Ave., Volin, SD 57072

Vickie Mensch-Geuther 605-661-3421
Cody Geuther 605-670-1807



2021 Sioux Empire Fair – Grand Champion Hereford Bull

2021 SD State Fair – Grand Champion Hereford Bull

2021 SD State Fair – Supreme Champion Bull over all Breeds

2021 American Royal – Hereford Class Winner

2021 American Royal – Hereford Reserve Division Champion

Full possession available.



MPH 2103 EASTWOOD G3 ET

Reg: 44053546 • DOB: 01/10/19

CED -1.8 BW 4.3 WW 63 YW 102 MM 32 M&G 63 MCE 3.4 REA .68 Marb .14 CHB \$126

Sire: \$600,000 National Champion, C Miles McKee 2103 ET

Dam: \$175,000 National Champion, Star KKH SSF Olivia 15U ET

Semen \$35/straw

Certificates \$75

Sexed Semen Available



MPH Z311 RAMPAGE D1

Reg: 43696424 • DOB: 01/7/16

CED 6.7 BW -0.5 WW 59 YW 94 MM 36 M&G 66 MCE 8.8 REA .46 Marb .40 CHB \$156

Sire: KCF Bennett Encore Z311 • Dam: RHF 0124 Rosie 3023A (DOD)

Semen \$30/straw

Certificates \$75

Sexed Semen Available

**GENETICS
AVAILABLE
PRIVATE
TREATY**



For more information contact:

Brian Mettler 605-951-3007

Ron Mettler 605-387-2841

28223 431st Ave.

Menno, SD 57045

bmettler@gwtc.net

www.mettlerpolledherefords.com

— NEW HERD BULL —



BAR JZ VANQUISH 329J
BW -0.8 WW 57 YW 93 Milk 15 CHB\$ 115
Sire: RV Valor 9444G ET
Dam: Bar JZ Heartstrings 325G



RV 4013 TESTED 0710 ET
BW 2.2 WW 71 YW 113 Milk 27
Sire: Innisfail WHR X651/723 4013 ET
Dam: RV Lady Time 0562

Your Black Baldy Source GANT HEREFORDS & ANGUS

Annual Sale Fri., February 23, 2024

1 PM at Gant Ranch

• Complimentary Lunch •
37195 285th St.,
2 miles west of Geddes, SD

Bid Online At

Livestock
Link

www.thelivestocklink.com

**Selling 50 Two-Year-Old Hereford & Angus Bulls
30 Angus Heifers bred Angus
12 Hereford Heifers bred Angus**

HEREFORD SIRES

BAR JZ Vanquish • NJW Decorby
RV 4013 Tested • Sleepy Leader

ANGUS SIRES

WAR Resource • Mogck Bullseye
A&B Payweight • A&B Cowboy Up
Mogck Enhance

GANT POLLED HEREFORDS & ANGUS

Dennis Gant

605-337-2564 • c: 605-680-1542
37214 285th St., Geddes, SD
dggant@midstatesd.net

Mark Gant

605-337-2340 • c: 605-680-1540
PO Box 15, Geddes, SD
markgant@midstatesd.net

www.gantpolledherefordandangus.com

The Livestock Link

www.TheLivestockLink.com

THE Best IN LIVESTOCK VIDEOS AND VIDEO SALES

**VIDEOING &
VIDEO SALES**



Our videographers and editors pay attention to every detail. We use the biggest, high-definition TV screens in the business for your video sales.

**FULL SERVICE
CLERKING**



Full clerking services with detailed reports including sale summary, media reports, sire reports, insurance reports, load out and delivery sheets and more.

**LIVE INTERNET
SALES & BIDDING**



Live internet sales with full feature bidding.
For more information please contact
Marc@TheLivestockLink.com
605/210-1956

ASK ABOUT THE TOTAL PACKAGE – VIDEOING, VIDEO SALE, ONLINE AND CLERKING

Marc Hotchkiss - 605/210-1956
marc@TheLivestockLink.com


Phil Eggers - 605/351-5438
phil@TheLivestockLink.com

www.TheLivestockLink.com

Hansmeier and Son Inc.

Registered Herefords since 1955

LARISSA KLEBSCH
605-216-5556

 FOLLOW US ON FACEBOOK AT HANSMEIER AND SON



PRIVATE TREATY FALL AND SPRING BULLS
SPRING HEIFERS AND STEERS

VISIT ANYTIME AT THE RANCH
14302 414TH AVE. ANDOVER SD 57422

Bischoff's RAVINE CREEK

TH 535F 738C Sleep On 181H



**BW 2.9
WW 79
YW 117
SC 1.2
M 34
REA .44
MARB .34
CHB \$133**

RV VALOR 9444G ET

**BW -0.4
WW 56
YW 89
SC 1.1
M 24
REA .82
MARB .23
CHB \$177**



19th Annual Sale March 13, 2024

Lots Sired By: Valor, Entice, Cuda, Fortified, Validated And Resident Sires 181H, H WMS Long Haul 1454 ET And Stud 7G.



**Gerald & Janelle; Garret, Peyton
& Cooper; Matt & Heather,
Reagan, Parker & Easton**

Garret: 605.461.1555 . Matt: 605.350.0980

Gerald: 605.350.0979

RIDGE CREEK RANCH

BLACKTOP FRAPPE 244



**Congrats,
Parker!**

He showed
Champion
Futurity
Heifer at the
South Dakota
Hereford
Show during
Spotlight.

PF MEREDITH 2240 ET



**“Sancho” x
Sleepy
Millie 517**

We are excited
to get this
new donor into
production!

Mike, Lori, Blake & Kyla Peskey

Lori: 605.350.1015 . Mike: 605.350.5788

peskeyfarm@gmail.com

2024 South Dakota Hereford Directory



Home of **OUTCROSS BRAXTONS**

These bulls are all conservatively marked and red eyed.



Anchor 15L

HYP • P44463871 • 2/19/23
Sire: Anchor 41F Dam: Anchor 14Z
BW 4.9 WW 59 YW 92 M 22 M&G 52
BW 88 • WW 800
Red eyes and red necked.
Polled



Anchor 40K

DLF, HYF, IEF, MSUDF • P44420245 • 2/26/22
Sire: Anchor 41F Dam: Anchor Braxton
BW 2.8 WW 51 YW 78 M 22 M&G 48
Heifer Bull. Very conservatively marked, big testicles, very good feet and legs (like old Braxton 57J) with a big, wide rear end. **Polled**



Anchor Braxton 25G

Grandson of old Braxton. Several daughters in the herd. **Homo Polled.**
Sire: Anchor 8E Dam: Anchor 14D
BW 3.8 WW 59 YW 90 M 28 M&G 57



Anchor 28J

DLF, HYF, IEF, MSUDF, DBP • 2/26/21 • P44315572
His calves are powerful and red eyed.
Sire: Anchor 27G Dam: Anchor 3G
BW 3.0 WW 61 YW 87 M 29 M&G 60
Polled

Bev Beeson

85663 579th Ave., Wayne, NE 68787

402-375-9027

jack.bev.beeson@gmail.com

Bulls for Sale



JB Ranch

jbranch.net



HORNED HEREFORDS *raised and developed*
for **LONGEVITY, FERTILITY and PREDICTABILITY**

L BAR W
CATTLE COMPANY

8TH ANNUAL PRODUCTION SALE

MARCH 8, 2024



AT THE RANCH | ABSAROKEE, MT

For SEMEN SALES and more information visit www.LBarW.com 

2024 South Dakota Hereford Directory

JOHNSON HEREFORD FARM

BEHM 504C GLOBAL 907G "GOLDEN CUDA"

Sire: BEHM 100W Cuda 504C • MGS: NJW 10W 3027 Upstream 104Y

BW: 1.5
WW: 62
YW: 106
MM: 38
REA: .47
CHB: 148



Many
Sires of Distinction
and
Dams of Distinction
in his pedigree!

Reg. #44060705
3/8/19

Get of Sire at Clay County Fair • JH Golden Cudas

311L
bull

2314
heifer

2315
heifer

317L
bull



Sired by 907G "Golden Cuda" • All out of Dams of Distinction.

.....
Yearling sons of Cuda (907G) and Historic for sale.

The cow herd is Extra Deep and Wrangler bloodlines with about
25% of the herd being Dams of Distinction.

**Breeding
Stock for Sale
Private Treaty**

**Videos
Available
in January**

JOHNSON HEREFORD FARM

— Raising easy keeping cattle for over 100 years —

Jack and Lynne Johnson

2165 240th St., Milford, Iowa 51351 • 712-260-3650 or 712-330-7470



Bull Run

An elite offering of
Hereford, Angus & Simmental Bulls,
plus registered & commercial females.

X

Saturday, March 9, 2024

6:00 p.m. at the Expo Building • W.H. Lyon Fairgrounds, Sioux Falls, SD

EGGERS
Southview Farms

Tim & Philip Eggers
25748 476th Ave., Sioux Falls, SD 57104
Tim: 605.929.6560 | Phil: 605.351.5438
eggerssouthviewfarms@gmail.com



Troy & Shannon Rasmussen
21959 476th Ave., Aurora, SD 57002
605.693.2152 | Troy: 605.690.0100
tsrasmussen@outlook.com | www.tsrcattleco.com

SECTION 16
CATTLE COMPANY

Erik, Kade & Delaney Scott
47881 287th St., Canton, SD 57013
Erik: 605.214.1332
section16cattleco@live.com
www.Section16CattleCo.com



Andy, Janna, Evelyn & Blake Mark
29023 457th Ave., Viborg, SD 57070
Andy: 712-441-5920 | Janna: 712-441-6771

A South Dakota style THANK YOU to our past buyers,
families, friends and neighbors who make this sale possible!
Please contact us for information on our upcoming offering.

To find more information, request a catalog and see
photos and videos of our entire offering, please visit:

www.i29bullrun.com



facebook.com/i29bullrun

watch and bid live at:
DVAuction
Broadcasting Real-Time Auctions
www.DVAuction.com

watch and bid live at:
The Livestock Link
Livestock Marketing - Video Sales
Help by Click Order Links
To view more go to: www.TheLivestockLink.com
www.TheLivestockLink.com

MLM

MITCHELL LIVESTOCK MARKETING

Mitchell, SD

NO ONE DOES IT BETTER



WT 50290
HD 65
AVG 774

WT 360
HD 300
AVG 377



Web www.focusmarketinggroup.net
Email office@focusmarketinggroup.net
Contact 785-213-5435 / 605-870-9072



Unleash the power of US



Kyla Fawcett
Owner / Field Staff



Kensie Meredith
Project Manager



Amanda Holt
Graphic Design



Alexis Rumford
Field Staff
Social Media Mang.



Magen Tol
Field Staff



Alexis Radun
Field Staff



Tia Schram
Special
Assignment

Focus Marketing Group (FMG) believes that the best marketing campaigns are created when the marketing agency and customer **work together as a team**. This is why we focus on creating strong team dynamics with our customers. We want to get to know your operation inside and out, so that we can create marketing efforts that are tailored to your specific needs. We want to be your partner in **SUCCESS**; **when you succeed, we succeed.**

focus 

www.focusmarketinggroup.net

FMG provides a wide range of services tailored to the specific needs of the livestock industry

*Captivating Photography - High-Quality Videography - Creative Graphic Design
 Search Engine Optimized Web Design & Innovative Social Media Management*

J Gerlach G Herefords

JEFF & DONNA GERLACH



DVOR 206E 214Z TOP DOLLAR 957G

Lead-off bull in Dvorak's 2021 sale.

Reg. #: 44009168 • DOB: 3/6/19

BW 3.8 WW 53 YW 92 M 22 MG 49

Semen Available



UPS ENDURE 8746

Reg. #: 43967399 • DOB: 9/16/18

BW 5.3 WW 78 YW 134 M 35 MG 73

Semen Available

Bulls For Sale Private Treaty March 1.

Most will be sired by Endure
and Frontier 174.

***Congratulations to the Wolf family for doing a great job at the
2023 South Dakota State Fair.***



*Colt Wolf, Avon, SD with a steer they purchased from us in the SD Excellence sale.
The steer was sired by LCX 88X Zoey 14B ET.*

605-999-1494 • gerlachherefords.com • 39412 259th St., Stickney, SD 57375

4/0

BLUME RANCH

Redfield, South Dakota

FOR SALE PRIVATE TREATY:

REGISTERED HEREFORD BULLS AND FEMALES
COMMERCIAL ANGUS HEIFERS BRED TO INDUSTRY LEADING HEREFORD BULLS

REFERENCE SIRES:

H5 0136 DOMINO 2203
H RW DEBERARD 0502ET
UPS EASY MONEY 6051



4/0 HOUSTON 2391



4/0 EASY MONEY 2206

For more information:

IVAN BLUME // (605) 460-2665 // 17137 US HWY 281, REDFIELD, SD 57469

HEREFORD *America*

**Largest privately-owned
Hereford newspaper in North America.**
Serving Registered and Commercial Hereford
breeders since 1996.

**It all started with South Dakota!
We are looking forward
to another great year!**

- Interesting Hereford articles
- Hereford News
- Unique perspective
- Sale & Show Coverage
- Social Media
- 7 issues per year — January, February, March, April/May, September, October, Nov/Dec
- Ad and editorial deadlines 5th of preceding month

Photo by Colin Hoffman

Jill and Marc Hotchkiss
13823 Beaver Creek Place • Reva, SD 57651
605/866-4495 (office) • 605/490-1409 (cell)



www.herefordamerica.com

DVORAK

HEREFORDS

02.02.24 ANNUAL BULL AND BRED HEIFER SALE

BOYD DVORAK 605.491.7090 JEFF DVORAK 605.491.2068
DVORAK HEREFORDS @ f WWW.DVORAKHEREFORDS.COM
30161 387TH AVE LAKE ANDES, SD 57356

FEATURING BULLS SIRED BY



RST FINAL PRINT 0016
AHA: 44178105



JDH AH LINCOLN 106H ET
AHA: 44148953



SR EXPEDITION 619G ET
AHA: 44054044



JDH AH DIMAGGIO
RUMBLER 124C
AHA: 43587486

SELLING 55 BULLS & 30 BRED HEIFERS



SEEDSTOCK. LAND. RESIDENTIAL. COMMERCIAL.

 *Chisum Peterson*
Peterson
Land & Auction

Office 605.234.4214
Mobile 605.730.4214
Fax 866.399.5622

310 Sorensen Drive
PO Box 498
Chamberlain, SD 57325
chisum@petersonlandauktion.com
petersonlandauktion.com

join us:



IN SIOUX FALLS, SOUTH DAKOTA

03.09.2024

OFFERING HEREFORD BULLS + FEMALES

herd sires:



BLACKTOP Perfecto 2902

AHA: 44344377



RV Cuda 0343

AHA: 44173363

EGGERS
Southview Farms

EGGERS SOUTHVIEW FARMS 25750 476TH AVE SIOUX FALLS, SD 57104

TIM + PHILIP EGGERS • 605/929-6560 - TIM • 605/351-5438 - PHILIP

EGGERSOUTHVIEWFARMS@GMAIL.COM - EMAIL • FIND US ON FACEBOOK



FREDERICKSON

Ranch

Join Us

Annual Production Sale

**1ST SATURDAY
IN DECEMBER**

At the Ranch, Spearfish, SD

Selling

175 Angus &
Hereford Bulls
20 Hereford
Bred Heifers

At Frederickson Ranch, the one thing we are not willing to compromise is the mother cow. At the end of the day she is what drives the sustainability of our ranch and yours for generations to come.

Nate (605) 254-4872
Mark (605) 645-4934
Ross (715) 307-4642



www.FredericksonRanch.com

Scan this QR Code
with your camera
app or visit our
website for a video
of our ranch



STENBERG HEREFORDS



**BUILDING A
FOUNDATION**
for the future
OF OUR YOUTH

cattle for sale this fall

AVAILABLE **PRIVATE TREATY**

SD HEREFORD EXCELLENCE SALE **NOVEMBER 11TH**

47229 232ND ST • COLMAN, SOUTH DAKOTA

CODY 605-695-0931 // **DAVE** 605-530-6002 // **LINDSEY** 605-496-2487

FIND US ON FACEBOOK AND INSTAGRAM

WWW.STENBERGHERFDS.COM



AM I FULL OF CRAP?

Calf scours are not inevitable. A strong prevention program is non-negotiable. Dependable scour prevention is essential for calf welfare, employee morale and business profitability. The immune system's response to vaccination is variable and unpredictable. That's why giving preformed antibodies instead of relying on a vaccine to stimulate antibody production is so important. I'm all for removing uncertainties. So yes, I stand by this product. (And no, I'm not.)

Learn more at
[FirstDefenseCalfHealth.com](https://www.FirstDefenseCalfHealth.com)

Marissa Hake, DVM
Calf Vet

© 2020 Immucell Corporation. All Rights Reserved.



**THE BEST VACCINE FOR SCOURS,
ISN'T A VACCINE.**



G

promo

your dedicated. creative. **professional.**

- LIVESTOCK PHOTOGRAPHER ✓
- GRAPHIC DESIGNER ✓
- SOCIAL MEDIA MANAGER ✓

Robin Kleine, Owner

G.O. PROMO, LLC • Girlfriend Original Promotions, LLC
4304 W Pennsylvania Circle • Sioux Falls, SD 57107
PH: 219/306-0323 • E: gopromollc@gmail.com



South Dakota Hereford Association

2024 MEMBERSHIP DIRECTORY

FOR INFORMATION CONTACT:

Shannon Marshall, SDHA Manager · manager@southdakotaherefords.org
(605) 520-4607

4/0 BLUME RANCH

Ivan Blume
Bruce Blume
17137 US Hwy 281
Redfield, SD 57469
Ivan 605-460-2665
Bruce 605-460-0897
ivanblume02@gmail.com
blumebruce2@gmail.com

ATKINS HEREFORDS

Peter & Laura Atkins
27132 SD Hwy 17
Tea, SD 57064
605-351-9847
petea15@gmail.com
Directions: From the Tea Exit #73 on I-29
– 4 1/2 miles west and ¼ mile South.
Production Sale January 22, 2024.
Online Female & Embryo Sale
October 2024.
www.AtkinsHerefords.com

BAR JZ POLLED HEREFORDS

Don & Peggy Zilverberg
Seth & Bridget Zilverberg
18542 326th Ave.
Holabird, SD 57540
Office 605-852-2966
Seth 605-870-2169
Don 605-870-1302
Peg 605-870-1304
cattle@barjz.com
North Ranch: from Holabird-13 N., 1 W.,
.5 S. From Onida-21 E., .5 S.
Sale Barn: From Holabird 9 N 1/2 E
www.barjz.com
Sale: February 20, 2024

BAYERS HEREFORD RANCH

Jill Bayers Hotchkiss
13823 Beaver Creek Pl.
Reva, SD 57651
Cell 605-490-1409
jbh@herefordamerica.com
Calves by: F Endure 180, C Key West
0065, KJ 175F Leader 941H
New bull: L3 B413 Desert Value 219

Selling Feb. 14, 2024 in Friedt sale.
www.BayersHerefordRanch.com

BEGALKA LIVESTOCK

Donnie & Stacy Begalka
46576 187th St.
Castlewood, SD 57223
605-873-9309 • 605-881-5056
sbegalka@itctel.com
Directions: 6 miles east, 3 miles south 3/4
miles east of Castlewood

BLACKTOP FARMS

Steve & Lori Repenning
41366 258th St.
Mitchell, SD 57301
605-999-3259 • 605-999-3260
Blacktopfarms@santel.net
Directions: 3 south of Mitchell on Hwy 37
then 3.75 east on 258th St
Endure 173D, Cuda 504C
Sale: February 16, 2024

BLUME HEREFORDS

Michael & Becky Blume
Gordon & Thordys Blume
815 Hyde Rd.
Pierre, SD 57501
Michael 605-870-0052
blumeherf@yahoo.com
Directions: North of Pierre – Call for
Directions
www.BlumeCattle.com

BONES HEREFORD RANCH

Monte Plucker
45807 268th St.
Parker, SD 57053
605-297-4583
605-201-9477
msplucker@yahoo.com

BRANDT HEREFORDS

Joseph, Alexis, and Jordan Brandt
42743 263rd St.
Emery, SD 57332
605-949-2636
joseph_brandt_07@hotmail.com

CK CATTLE

Chris & Kristi Effling
 PO Box 23
 Highmore, SD 57345
 Chris 605-769-0142
 Kristi 605-769-1308
 ckeffling@venturecomm.net

CSC LIVESTOCK

Cody & Shawna Chabot
 PO Box 936
 Sundance, WY 82729
 Cody 307-281-2367
 chabotc@yahoo.com
 www.csclivestock.com
 Sale Date: Genetics available private
 treaty
 Directions: 13.5 miles south of Sundance
 on Hwy 116, Right on Douglas Rd, 1st
 place on left.

COVEY CATTLE

Calah, Craig, and Dawn Covey
 26063 319th Ave.
 Hamill, SD 57534
 Calah 605-840-0951
 Craig 605-840-1329
 Dawn 605-840-1334
 cwccovey@gwtc.net
 dec.63@hotmail.com

DAKOTA BORDER CATTLE CO

Jason, Ashley, Wyatt and Jaxon Hasper,
 Brayden Goehring
 30425 108th St.
 Herreid, SD 57632
 605-850-9025
 jahasper@outlook.com

DEAN SUELFLOW

37076 261st St.
 White Lake, SD 57383
 605-249-2634
 605-680-4533
 Directions: 8 south, 3.25 west,
 of White Lake, SD

DELANEY HEREFORDS INC.

Jerry & Shelly Delaney
 Nick & Holly Delaney
 2071 CR 101
 Lake Benton, MN 56149
 Jerry 507-820-0661
 Nick 507-829-0561
 jdh@delaneyherefords.com
 Directions: From Lake Benton, MN -

2024 South Dakota Hereford Directory

North on Hwy 75 4 miles, turn west onto
 Cty Hwy 13 for 5 miles. Turn north on Cty
 Rd 101 for 1.5 miles. Delaney Herefords
 on west side of road.
 Bloodlines: Entice, Standout, Benton,
 Land Grant
 www.DelaneyHerefords.com

DVORAK HEREFORDS

Boyd Dvorak & Jeff Dvorak
 30161 387th Ave.
 Lake Andes, SD 57356
 Boyd 605-491-7090 • Jeff 605-491-2068
 dvorakboyd@yahoo.com
 Sale location - 1/4 mile east, 1/4 miles
 north of Pickstown. Farm/Feedlot - 2.5
 miles north of Marty (30055 388th
 Ave).
 Bloodlines: Calves sired by Final Print,
 Lincoln, Expedition, Horned calves sired
 by Holden L1 & JCS 100 Proof 0880
 Sale: Feb. 2, 2024
 www.dvorakherefords.com
 Facebook: Dvorak Herefords

EGGERS SOUTHVIEW FARMS

Tim Eggers & Phil Eggers
 25750 476th Ave.
 Sioux Falls, SD 57104
 Phil 605-351-5438
 Tim 605-929-6560
 eggerssouthviewfarms@gmail.com
 Directions: I90 Renner/Crooks Exit. East
 to 476th Ave. North and to the sign (1/2
 mile)
 Sale: I-29 Bull Run on March 9, 2024.

EICHLER LIVESTOCK

Keith Eichler
 1624 Melody Lane
 Aberdeen, SD 57401
 605-228-7433
 gotcows@yahoo.com
 Bloodlines: 45C
 Gotcows.com



FAWCETT'S ELM CREEK RANCH

Keith & Cheryl Fawcett
 Daniel & Kyla Fawcett, Hollis & Ivy
 Weston & Kris Kusser,
 Falon, Jensen and Marty
 21115 344th Ave.
 Ree Heights, SD 57371
 Daniel 605-870-6172
 Weston 605-478-0077
 kcfawcett@hotmail.com
 Bloodlines: FECR Powered Up Line 1,
 NJW Polled Breeding
 Annual Production Sale, February 12,
 2024. April & October Female Sale.
 www.FawcettsElmCreekRanch.com

FINK POLLED HEREFORDS

Mike C. Fink
 43610 SD Hwy 42
 Bridgewater, SD 57319
 605-729-2515 • 605-999-2075
 finklaw@unitelsd.com
 Directions: 1/4 east of Bridgewater, SD
 Bloodlines: Fink 6Z Forcast; JDH Victor
 719T 33Z
<https://sites.google.com/site/finkpolled-herefords/home>

GERLACH HEREFORDS

Jeff & Donna & Kyle Gerlach
 39412 259th Street
 Stickney, SD 57375-5600
 Home 605-236-5724
 Cell 605-999-1494
 jdck@santel.net
 Directions: from Sickney-3 N. 6E; from
 Mt. Vernon- 6 S., 3 W.
 Bloodlines: 88X, Endure 173, SR Expedi-
 tion
 Private treaty first weekend of
 March.

GRACE HEREFORDS

Tim & Clara Grace
 45743 257th St.
 Humboldt, SD 57035
 605-201-7496
 graceherefords@gmail.com

HANSMEIER & SONS, INC.

Keith Hansmeier and Larissa Klebsch
 77 Main St. S.
 Bristol, SD 57219
 Larissa 605-216-5556
 lshansmeshea@gmail.com
 Bloodlines: STUD 63E, Flash 559C, She-
 nanigan 551G, Rampage D7, Drammen
 32K
 Sale Date: Private Treaty

HANSON'S POLLED HEREFORDS

Sherry Hanson
 15481 409th Ave.
 Conde, SD 57434
 Sherry 605-382-7477
 hanson_herefords@hotmail.com
 Sale Date: Bull & heifers for sale private
 treaty, BHSS, & Watertown Farm Show

HEREFORD AMERICA

Jill & Marc Hotchkiss
 13823 Beaver Creek Pl.
 Reva, SD 57651
 Office 605-866-4495
 Jill 605-490-1409
 Marc 605-210-1956
 jbh@herefordamerica.com
 www.HerefordAmerica.com

HILLSVIEW FARMS

Darwin & Cindy Aman
 32824 119th St.
 Eureka, SD 57437
 Darwin 605-377-3459
 Cindy 605-377-3441
 dcaman@valleytel.net
 Directions: From Eureka - 7 south on
 Hwy 47, 1.25 miles East on Hillsvie
 Rd.
 Bloodlines: Trust, Cash Flow, Home-
 town
 Sale Date: Private Treaty

HOFFMAN HEREFORDS

Colin and Mary Beth Hoffman
 Miles Hoffman
 11341 357th Ave.
 Leola, SD 57456
 Colin 605-216-5706
 Miles 605-277-5048
 cmbhoffman@msn.com
 Directions: from Leola - 5 W. & 1.5 N.
 Bloodlines: Remitall Rita and Sally cow
 families. Precise, Triple Crown, Dakota

Lad, Sterling, Dubai, and After Hours
herd sires.
www.hoffmanherefords.com

HORA HEREFORDS

James or Karla Hora
27718 423rd Ave.
Parkston, SD 57366
605-928-3008
605-770-3008
jhora@santel.net
Directions: from Parkston-13 E. & 1.25 S.

JOHNSON HEREFORD FARM

Jack & Lynne Johnson
2165 240th St.
Milford, IA 51351
Jack 712-260-3650
Lynne 712-330-7470
jjljfarm@hotmail.com
Directions: 2 miles south of Milford on
Hwy 71 and 1/4 mile to the west, big ever-
green grove and two silos. Bloodlines:
Wrangler and Line One in the cow herd.
Using Cuda and Historic sons.

KLAGES HEREFORDS

Jeff & Mary Klages
64090 410th St.
Ortonville, MN 56278
320-273-2163
Jeff 605-880-0521 • Mary 320-305-9047
jmkklages@fedteldirect.net
Directions: From Ortonville, MN: 8 Miles
east on US Hwy 12, 1 mile North of 650th
Ave, 1 mile east on 410th St.
Bloodlines: WLB Anser 90X 10Z, RV
Thunderstruck 4239, ECR RO 3304 To-
bey, KCF Bennett B413 G85, KCF Bennett
C776 H471
Sale Date: Watertown Winter Farm Show
& Sale and by private treaty

KNIPLING HEREFORD, LLC

Randy & Susan Knippling
Garin & Jerri Ann Haak
Tyler & Sarah Danil
Rob Knippling
34957 225th St.
Gann Valley, SD 57341
605-680-3185 • 605-680-4637
Garinhaak@yahoo.com
Directions: 11 West of the Hwy 45 & Hwy
34 crossing at 349 Ave go 3 North to 225
St then 1/2 mile East

Bloodlines: Line 1 and Canadian
Sale: Jan. 21, 2024
www.Knipplinghereford.com

KNOCK'S WOLF CREEK RANCH

Eric & Roxanne Knock
Rylee Knock
RaeAnne Knock
18591 375th Ave.
Tulare, SD 57476
605-596-4154
605-695-4086
Directions: 9 miles West and 3 miles
South of Tulare
Bloodlines: Revved Up 78A, Bennett
Acclaim, Domino 1109
reknock@venturecomm.net
Sale Date: Private Treaty

KOLOUSEK FARMS, INC.

Dick & Scott Kolousek
37228 234th St.
Wessington Springs, SD 57382
605-730-1509
scottandamber@yahoo.com
Kolousekfarms.com

L BAR W CATTLE CO.

Carl & Denise Loyning
Mike & Jeannette Walen
PO Box 398
Absarokee, MT 59001
Carl 406-425-2484
cdloyning@gmail.com
Directions: 21 Red Barn Lane, Columbus,
MT. 10 miles south of Columbus, Mon-
tana on Hwy 78
Bloodlines: Line 1 genetics with Chur-
chill & Colyer added genetics.
Sale March 8, 2024 @ the ranch
www.lbarw.com

LNJ FARMS & RANCH

Lyle, Jackie, Lyla, Nathan and Jasmine
Bothe
47765 219th St.
Aurora, SD 57002
605-691-3870
lnjfarmsranch@gmail.com
Directions: 1-29 to exit 127, head east on
SD Hwy 324 4.5 miles to 477th Ave go
south 2 miles to 219th st go east .5 mile
Bloodlines: Excede, Perfecto, Frontier,
Masterplan, Revolution, Advance
and Priority
Sold Private Treaty

LAIBLE HEREFORDS

Landon & John Laible
 43703 SD Hwy 34
 Howard, SD 57349
 Landon 605-579-0148
 John 605-579-0072
 landonlaible@gmail.com
 Directions: 3 miles east of Howard, SD
 Horned & Polled genetics

METTLER CATTLE CO.

Brian, Teresa, Brooklyn, and Jaxen
 Mettler
 Ron and Kevin Mettler
 28225 431st Avenue
 Menno, SD 57045
 605-951-3007
 605-359-9035
 bmettler@gwtc.net
 Directions: 3 and ¾ miles North of Menno, SD
 Bloodlines: Rampage, Eastwood, Miles Mckee, Revolution, Genesis, Desperado, Guardian, 2296, P606, Belle Air, About Time
 Sold Private Treaty - any time
 www.mettlerpolledherefords.com

MK MAHER HEREFORDS

Mitch & Kim Maher
 46005 224th St.
 Nunda, SD 57050
 Cell 605-480-3993
 mjmaher8282@gmail.com

NUHSBAUMER HEREFORDS

Steve and Amy Nuhsbaumer
 Casey Nuhsbaumer
 17661 370th Ave.
 Zell, SD 57469
 605-450-0550
 Stevenuhsbaumer@gmail.com
 From Zell - 3 miles west on US Hwy 212.
 South on 370th Ave 5.5 miles.
 Bloodlines: Mostly Line 1 Horned Hereford

OLLERICH BROS. HEREFORDS

Jerome Ollerich
 James Ollerich
 29188 303 Ave.
 Clearfield, SD 57580
 605-557-3246
 Jerome 605-842-5212
 James 605-359-4006

jeromeo@goldenwest.net

Directions: 4 west of Clearfield OR 10 west of 155, 3 miles w from Winner, SD.

Bloodlines: Daybreak, Standing Ovation, Expedition, Leader
 Sold Private Treaty
 ollerichbrothersherefords.com

OLLERICH CATTLE

Ryan Ollerich
 47637 172nd Street
 Clear Lake, SD 57226
 605-759-6405
 ryanollerich@yahoo.com

OLTHOFF POLLED HEREFORD FARM

Eldon, Susan &
 Jonathan Olthoff
 26117 429th Ave.
 Emery, SD 57332-7300
 605-449-4766 • 605-661-0116
 esjolthoff@triotel.net
 Directions: From Emery - .25 south from west side of town

PEIRCE POLLED HEREFORDS

Vernelle & Bonn Clayton
 East of White, SD
 Peircepolledherefords.com
 Call Vernelle or Bonn at
 605-479-3099 • 612-369-4370
 Directions: Call for directions from White SD.
 Bloodlines: Validated, TH Frontier, Blueprint
 vernelle@vclayton.com
 Sale Date: Private Treaty

PESKEY FARMS

Mike & Lori Peskey
 21967 411th Ave.
 Iroquois, SD 57353
 Mike 605-350-5788
 Lori 605-350-1015
 peskeyfarm@gmail.com
 Directions: 12 S, 2 E ¾ S of Cavour, SD.
 Sale: March 13, 2024



RAINBOW HEREFORDS

Vickie Mensch-Geuther & son Cody
Geuther

30734 456th Ave.

Volin, SD 57072

Vickie 605-661-3421

Cody 605-670-1807

Rainbowherefords@gmail.com

Bloodlines: ABC Ribeye Buster 414, MC
Bo Jangles 08ET, RH Lockwood 025, Day-
break 247, JDH 73F 21G Prominent 5K
Sale: Brookings, Go-pher, Neb. Corn
Huskers, Private Treaty

RAUSCH HEREFORDS

Shannon Rausch • Jacob Rausch

Peter Rausch

14831 Hereford Rd.

Hoven, SD 57450

Shannon 605-769-0203

Jacob 605-769-0552

Peter 605-281-0471

Jacob@rauschherefords.com , peter@
rauschherefords.com , shannon@rausch-
chherefords.com

Bloodlines: Polled & Horned Genetics

Directions: 2.5 West of Hoven:

Hwy 20 & 47

Sale: Presidents Day – 3rd Monday in
February

Rauschherefords.com

RAVINE CREEK RANCH

Gerald & Janelle Bischoff

Garret Bischoff

Matt & Heather Bischoff

2025 399th Ave.

Huron, SD 57350

Gerald 605-350-0979

Garret 605-461-1555

Matt 605-350-0980

ravinecr@santel.net

Directions: From Huron, Intersection of
Hwy 14 & Hwy 37 - 8N, 1W and 1/4S.

Annual Production Sale March 13, 2024
www.ravinecreekranch.com

RCR POLLED HEREFORDS

James & Bonnie Simmermon

38372 291st Street

Lake Andes, SD 57356-6871

Home 605-487-7406

Jim 605-481-1936

jsimmermon@hcinet.net

Bloodlines: Nichols Prime Time 546,
Cash Flow, Catapult, Summit, AH Online
Tradition 11P, RCR Maintrain P2.

ROBIN KLEINE

4304 W. Pennsylvania Cir.

Sioux Falls, SD 57107

219-306-0323

robin.k.kleine@gmail.com

SCHUETTE LAND & CATTLE

Jerry, Kathy, Rebecca, & Courtney

Schuette

PO Box 66

Highmore, SD 57345

Jerry 605-478-0301

Kathy 605-478-0302

Directions: from Highmore - junction of
Hwy 14 & 47 - 2.5 N 1 E & .25 N

Bloodlines: JDH 21D 9365 Entice 13J,

CCCC 0945 529 922G, CCCC Genesis 45C
204K ET, ECR Candi's Copper 13333 ET
slc@venturecomm.net

SECTION 16 CATTLE COMPANY

Erik Scott

Craig Broughton

47881 287th Street

Canton, SD 57013

605-214-1332

Section16cattleco@live.com

Directions: 5 mile South of Canton
on Hwy 11, ¼ West, south side of the
road.

Sale: I-29 Bull Run on March 9, 2024.

www.section16cattleco.com

SIMON HEREFORDS

Brian & Colleen Simon

32792 US Hwy 212

Seneca, SD 57473

Home 605-436-6725

Brian 605-765-4564

besimon@venturecomm.net

Directions: Going east, 18 miles east of
Gettysburg; going west, 4 miles west of
Seneca on US Hwy 212.

Bloodlines: Braxtn Mackintosh 117D,
Gerber Liberty 017L, KCF Bennett 3008
M326, SSS Mackintosh 0232, SMN 0527
Liberty 0709

Sold Private Treaty

www.simonherefords.com

SLEEPY HOLLOW FARM

Mark, Jeanne,
Trevor & Tate Johnson
28901 465th Ave
Centerville, SD 57014
Mark 605-212-2387
Jeanne 605-957-5036
Facebook: Sleepy Hollow Farms – Here-
ford and Angus
johnsonm655@yahoo.com
Directions: From I-29 Fairview Exit #56,
4.5 W, 1 S and 1 1/2 W. South Side of Road
Sale: Annual Bull Sale 2nd Friday in
March at the Farm

STENBERG HEREFORDS

Cody & Kasey Williams
Dave & Audrey Stenberg
47229 232nd St.
Colman, SD 57017-6821
Cody 605-695-0931
Dave: 605-530-6002
stenbergherefordsgmail.com
Directions: 20 miles south of Brookings,
Exit 114. 1/4 mi west, 2 mi north, 1/4
mi east. 30 miles north of Sioux Falls,
Exit 109, 1/2 mi west, 3 mi north, 1/4 mi
east.
Sold Private Treaty & SD Excellence Sale
StenbergHerfs.com

**THORSTENSON HEREFORD
RANCH**

William & Paula Thorstenson
Darin & Danielle Thorstenson
6804 Overholzer Ave.
Selby, SD 57472
Bill - 605-845-6108
Darin - 605-321-6416
wpthorstenson@venturecomm.net
Directions: 3.5 miles south west of Selby,
SD
Bloodlines: Wrangler, Homegrown, Man-
date, Hometown, & BR BelleAir
Sale: 2nd Saturday in April
Thorstensonherefordranch.com

TRICKY'S HEREFORDS

Richard W & Betty Wettlaufer
44132 234th St.
Winfred SD 57076-7318
Sale: March 2024

TSR CATTLE CO.

Troy, Shannon, Tyler, Riley, Shaedan
Rasmussen
21959 476th Ave.
Aurora, SD 57002-7110
Home 605-693-2152
Troy 605-690-0100
Shannon 605-690-0105
Tyler 605-690-3150 • Riley 605-690-9450
tsrasmussen@outlook.com
Directions: I-29 Exit 127, Head east on
Hwy 324 3.5 miles to 476th Ave, go south
2.5 miles
Bloodlines: Harvey Hudson, NJW Long
Haul, SR Sierra, Pyramid Pilgrm, Pyra-
mid Daybreak, ECR TSR OBH Standing
Ovation
Sale: I29 Bull Run, March 9, 2024.
www.tsrcattleco.com

WOODCREST FARMS

Seth Wood & Ruth Wood
36568 153rd St.
Cresbard, SD 57435
605-626-1643
rewood@venturecomm.net
Sale Dates: Private Treaty
Directions: from Cresbard-4 E. on Hwy
20, 1 N, & 0.25 W. From Chelsea- 6 W. on
Hwy 20, 1 N. & 0.25 W.

ZENS HEREFORDS

Harley & Matt Zens
24480 432nd Ave.
Canova, SD 57321
605-523-2655
Harley 605-999-0117
Matt 605-310-5782
mattzens@yahoo.com
Directions: 3 south, 3 west of
Canova
Bloodlines: Line 1 and Canadian genetics
Sold Private Treaty
www.zensherefordsgmail.com



Thorstenson HEREFORD RANCH



NJW 21C 6589 IGNITE 97G ET (DLF,HYF,IEF,MSUDF,MDF)

Reg. # P44057386

BW 0.8 WW 52 YW 82 M 30 M&G 56 UDDR 1.30 TEAT 1.40 REA .35 MARB .07

Powerful Mandate son, huge quarter, big testicles, tremendous hoof and leg structure.

Introducing...



KCF BENNETT EAGLE H550

Reg. # 44249999 • DOB: 9/28/2020

Homozygous Polled

BW 2.9 WW 88 YW 137 SC 2.0 M 38 M&G 81

UDDR 1.50 TEAT 1.40 REA .66 MARB .65 CHB\$ 188

High-seller at KCF in 2021. Short marked, fully pigmented, deep eye set and massive. Some of the best EPDs. Paul Bennett says "one of the most powerful bulls we have produced to date."

Production Sale
APRIL 13, 2024

**80 Hereford &
Angus Bulls**
30 Hereford Heifers
30 Angus Heifers

Bill & Darin Thorstenson • 30491 131st St., Selby, SD 57472

Bill: 605-845-6108 • Darin: 605-321-6416

wpthorstenson@venturecomm.net • www.thorstensonherefordranch.com

Focusing on Good, Functional Cattle with Exceptional traits...including pigment!

The cows have come home and the bulls are in the Friedt sale.



New Sire

Current Sire



L3 B413 Desert Value 219 "Huck"

BW 3.6 WW 65 YW 101 MM 35 M&G 68
REA .99 Marb .50 CHB\$ 163

F Endure 180

BW 3.7 WW 73 YW 127 MM 31 M&G 67
REA .88 Marb .45 CHB\$ 202

Selling 5 Bulls in the Friedt Herefords Sale **Wed., February 14, 2024**

at Stockman's West • Dickinson, ND • 1:00 p.m. MT • 4 Yrlngs, 1 Two-Yr-Old



B D29 180 ENDURE 387L

Sire: F Endure 180 • P44468355



B 83 180 ENDURE 371L

Sire: F Endure 180 • P44468316



B JBH 710 NAVARRO 3150

Sire: FH Navarro 765 • 44516385

For more
information
contact:

Bayers Hereford Ranch

Jill Bayers Hotchkiss

jbh@herefordamerica.com

605/490-1409

13823 Beaver Creek Pl. • Reva, SD 57651

www.BayersHerefordRanch.com

Videos will be up in
mid-January



ONLINE BULL SALE

SATURDAY, FEB. 17, 2024

The **Livestock**
Link

Offering 2-Year-Old Polled Hereford Bulls

Videos available on www.HillviewHerefords.com and www.thelivestocklink.com



Featuring sons of:

SHF Delta A191 D300 ET

BW 2.8, WW 56, YW 96,
SC 2.1, Milk 33, M&G 61,
MCE 2.2, Udder 1.50, Teat 1.50,
REA .72, Marb .27, CHB \$132

Exciting New Herd Sire

AF B G16 Genesis 244 ET

BW 1.8, WW 63, YW 112,
SC 1.1, Milk 33, M&G 64,
MCE 5.4, Udder 1.40, Teat 1.30,
REA .71, Marb .41, CHB \$174

Owned with Bayers Hereford Ranch
and Aaron Friedt

— Semen for sale —
\$50/straw, \$50/certificate
(Contact Aaron Friedt, 701/590-9597)

Call or email
for catalog

Hillview Farms

32824 119th St., Eureka, SD 57437
605-284-2721 • dcaman@valleytel.net
Cindy: 605-377-3441

Darwin & Cindy Aman
Andrew - Sam - Alex

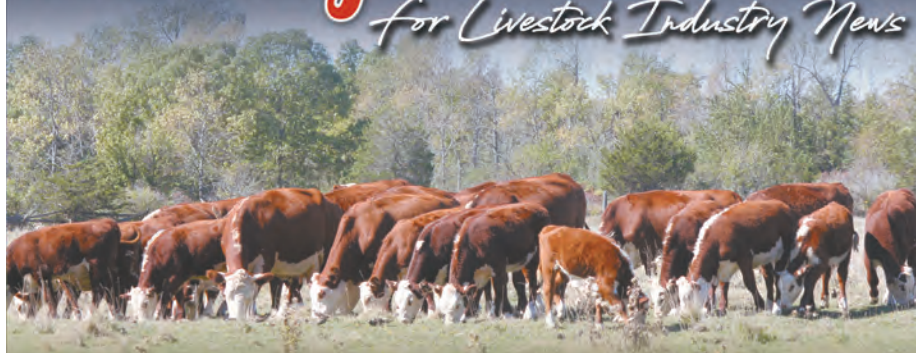
www.HillviewHerefords.com

INDEX

AHA - Aaron Friedt	12	JB Ranch	20
Atkins Herefords	9	Johnson Hereford Farm	22
Bar JZ Ranches	7	Knippling Hereford	4
Bayers Hereford Ranch	44	L Bar W	21
Blume Ranch (4/0)	27	Laible Herefords	14
Cattle Business Weekly	46	Members	36-42
Dvorak Herefords	29	Mettler Cattle	15
Eggers Southview Farms	31	Mitchell Livestock Marketing	24
Fawcett's Elm Creek Ranch	2	Ollerich Bros.	48
Fink Polled Herefords	5	Peskey Farms	18-19
Focus Marketing	25	Peterson, Chisum	30
Frederickson Ranch	32	Rainbow Herefords	14
Gant Herefords and Angus	16	Rausch Herefords	3
Gerlach Herefords	26	Ravine Creek Ranch	18-19
G.O. Promo (Robin Kleine)	35	SDHA Board & Events	6
Hansmeier and Son Inc.	17	SDJHA Info	8
Hereford America	28	Stenberg Herefords	33
Hillview Farms	45	The Livestock Link	16
Hoffman Herefords	13	Thorstenson Hereford Ranch	43
I29 Bull Run	23	Tricky's Herefords	10-11
Immucell	34	Zens Herefords	12

The Region's Choice

for Livestock Industry News



THE
CATTLE BUSINESS
WEEKLY

PO Box 700, Philip, SD 57567

605-859-2022

www.cattlebusinessweekly.com

KA-CHING.

MORE POUNDS.
MORE CALVES.
MORE PROFIT.



Hereford.org | 816-842-3757

Hereford bulls increase net profit by \$51 per cow per year.

That's \$20,000 in additional revenue for a typical 400-cow outfit, thanks to increased fertility and herd size.

Herefords are also the efficiency experts, proven to add value to calves in the feedyard — \$30 per head in profitability.

7%

Higher pregnancy rates

\$51

More Per Cow, Per Year

\$20

Advantage in Feed Efficiency

\$30

Advantage in Feedlot Profitability



FALL YEARLING BULLS FOR SALE

Sired by these bulls



SR EXPEDITION 619G ET

BW 0.2; WW 75; YW 118; M 42;
M&G 79; MCE 5.0; REA .68; MRB .28;
BMI\$ 566; CHB\$ 158



SHF DAYBREAK Y02 D287 ET

BW 1.7; WW 72; YW 114; M 26;
M&G 52; MCE 1.7; REA .81; MRB .31;
BMI\$ 429; CHB\$ 157



ECR TSR OBH STANDING OVATION

BW 2.7; WW 69; YW 115; M 38;
M&G 73; MCE 6.2; REA .44; MRB .33;
BMI\$ 411; CHB\$ 164



Contact us for more information:

29188 303 Ave. • Clearfield, SD 57580
605-557-3246

Jerome's cell: 605-842-5212
James' cell: 605-359-4006

www.ollerichbrothersherefords.com