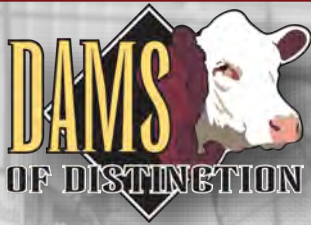


Kansas Hereford Association Membership Directory 2023





Ranked #4 of all herds with 35 cows qualifying with the distinct honor of being named Dams of Distinction in 2022.

VJS POLLED HEREFORDS



VJS Polled Herefords

1962 220th Ave.

Hays, KS 67601

vjspolledherefords@yahoo.com

www.vjspolledherefords.com

Brian - (785)623-1701

Nathan - (785)650-7519

TH 88A 8010 ENDURE 154H (44138532)

CED	BW	WW	YW	DMI	SC	M	M&G
2.6	5.2	68	111	0.4	1.2	22	55

CEM	MCW	Fat	REA	Marb	BMI	BII	CHB
1.2	96	0.021	0.49	0.02	\$333	\$410	\$110

BULLS AND HEIFERS FOR SALE PRIVATE TREATY AT THE FARM

Come By the Ranch and Pick Out Your New Herd Sire



TG 924 Barn Cat 1108

Herd Sires:

TG Alley Cat 9148 G 6177 Barn Cat 907

G 22C Super Zam 811 SR Navarro 301J ET

SR Proceed 711J HH Advance 1114J

AGA 16D Draft Gopher 83G

SH 217Z Ribestone 036H TG 101F Britisher 123

Bulls and

Heifers for Sale

Private Treaty.

GUSTAFSON HEREFORDS

7477 Davis Creek Rd

Junction City, KS 66441

(785) 238-7306 hm (785) 761-6804 cell

Gus, Deb, Shelbi, Tava, and Koy Gustafson

Visitors Always Welcome

**Visit our new website at
www.gustafsonherefords.com**





B & R

Brannan & Reinhardt Polled Herefords



THE
REINHARDT'S

Kent & Pat
418 W DIEL
Otis, KS 67565

Breeding Polled Herefords since 1947

Performance Data since 1973: Ultrasound data since 1998

Bulls & Females For Sale

WEBSITE:

www.brpolledherefords.com

785-387-1846

rhinos@gbta.net

SENIOR HERD SIRES

SHF GALVANIZED D256 G331 ET (CHB)-(DLF,HYF,IEF,MSUDF)

CE EPD	BW EPD	WW EPD	YW EPD	SC EPD	MM EPD	M&G EPD	MCE EPD	MCM EPD	UD EPD	Teat EPD	Fat EPD	REA EPD	Marb EPD	BMI Index	Bil Index	CHB Index	
	BW	WW	YW								Fat	REA	IMF				
7.9	0.2	62	93	1.3	23	55	2.7	89	1.60	1.70	0.03	0.63	0.29	\$307	\$393	\$154	
	78	694	1251								0.39	14.24	3.96				

Semen available

Homozygous Polled

DOB: 2/23/2019

SIRE: SHF Drumline 001A D256

DAM: SHF Magna Y02 A93

Dam's Sire: SHF York 19H Y02

SHF GAUNTLET B413 G085 (CHB)-(DLF,HYF,IEF,MSUDF)

CE EPD	BW EPD	WW EPD	YW EPD	SC EPD	MM EPD	M&G EPD	MCE EPD	MCM EPD	UD EPD	Teat EPD	Fat EPD	REA EPD	Marb EPD	BMI Index	Bil Index	CHB Index	
	BW	WW	YW								Fat	REA	IMF				
0.7	2.3	61	93	1.1	26	57	3.3	76	1.40	1.40	0.04	0.99	0.77	\$405	\$523	\$191	
	86	600	1159								0.28	15.38	3.97				

Semen available

Homozygous Polled

DOB: 2/9/2019

SIRE: EFBEEF BR VALIDATED B413

DAM: SHF GERBER Z67 7B164

Dam's Sire: SHF MUTUAL X36 Z67

At the Ranch (Bison)

Larry & Allison Gradig

Larry: 620-200-4770

Ness City

Derek & Jennifer Reinhardt

Derek: 620-804-1738

Galatia

Nelson Reinhardt

Nelson: 785-656-1475

Headquarters: 1/2 mile north of Bison, KS on the east side or 6 miles east & 1/2 mile south of the US 183 & K-4 intersection at the north edge of La Crosse, KS

BTS HEREFORDS

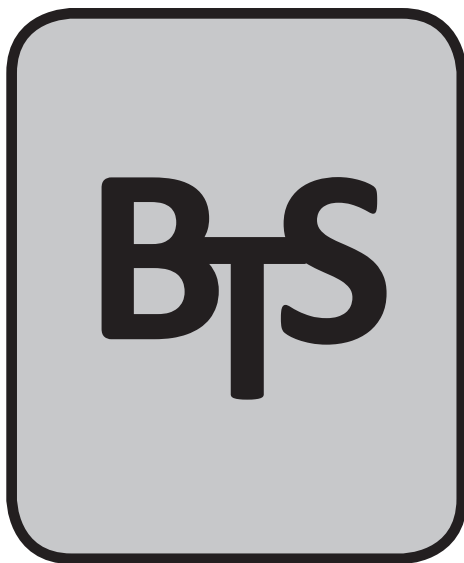
Bruce and Tracy Schlickau

Greg & Emilee

14601 South McNew Road

Hutchinson, KS 67501

620-459-6576



HERD SIRES

**BNT CONTENDER 93 ET
NICHOLS 3053 DOMINO 619**

**BTS 977 BLUESTEM 763
SBS 2707 DOM 462**

**Private Treaty Sales of Bulls and Females Available.
Visitors and enquiries always welcome!**

5 miles south of K-96 and Hwy 14 JCT., 1 mile east,
and 3/4 south on McNew Rd.



Using sons of:

HH Advance 6319D

B&D L1 Domino 9335 ET

GH 3786 Full Throttle 7F

G942 Sustain 405

CJH Harland 408

HH Advance 6065D

**Commercial and registered heifers and
steers for sale via private treaty**



Jim, Betty, and Kim Cerny
2939 Birch Road
Narka, KS 66960

Jim: 785-527-0305
Kim: 785-822-4802
kchereford@hotmail.com

TRIPLE R HEREFORDS



-G 9164 DOMINO 108 44275079

BW: 88 WW: 746 YW: 1100

CE -0.2 BW 4.5 WW 60 YW 94 DMI 0.4 MILK 25 REA .38 MARB .02

-G 9164 DOMINO 108 IS A DEEP, LONG SIDED, STOUT MADE YOUNG HERD SIRE. PICTURED AFTER RUNNING OUT AND BREEDING COWS THIS WINTER, HE IS A COMPLETE OUTCROSS ON OUR ENTIRE HERD AND WE ARE EXCITED TO SEE THE RESULTS. WE HAVE BULLS AND FEMALES FOR SALE YEAR AROUND PRIVATE TREATY AT THE RANCH.

OTHER SIRES INCLUDE:

-G 9164 DOMINO 108

G 4150 BAKKEN 7169

G 22C SUPER ZAM 208

-G FORT DOMINO 704 ET

G BARN CAT 026

RAFTER K 5216

BULLS & FEMALES FOR SALE PRIVATE TREATY AT THE RANCH

TRIPLE R HEREFORDS

Jeff, Beverly & Anton Reichart

18384 Coal Creek Road

Valley Falls, KS 66088

Jeff & Beverly : 785-633-3342

Anton & Lacy: 785-220-8996

VISITORS WELCOME ANYTIME

Ranch Headquarters Located 2 miles north of Valley Falls, KS on Coal Creek Road

PLCC CWP

1131J

IMMACULATE



Located at Sutor Ranch
630 AA Road
Zurich KS 67663-7041

785-737-5711 Home/Office
785-737-6096 Dana
785-737-3931 David

HERD SIRES

HERD SIRES:	CED	BW	WW	YW	SC	MM	CEM	REA	Marb	BMI	CHB
O L1 Domino 8116F	-0.7	2.8	64	97	0.8	28	6.4	0.36	0.39	\$481	\$167
O B261 Domino 8193	6.5	2.5	47	84	0.7	20	7.6	0.59	0.35	\$354	\$145
O L1 Domino 966G ET	8.7	0.8	61	98	1.2	31	10.7	0.28	0.51	\$477	\$164
O Advance Anodyne 0318H ET	6.1	2.2	60	98	1.3	25	4.5	0.64	0.23	\$373	\$153
O R294 Domino 847F	4.9	2.3	59	93	1.1	31	7.4	0.39	0.41	\$322	\$137
O 847 Domino 189J	4.7	2.7	58	97	1.4	31	7.2	0.38	0.29	\$340	\$127
O L1 Domino 1166J	6.3	3.4	62	101	1.9	30	6.7	0.45	0.19	\$372	\$126



Thank you to all of our customers.

Contact us for Hereford bulls and females and BWF females.

Private treaty sales. Inquiries and visitors welcome.

Oleen Cattle Co.

10272 S. Forsse Rd. Falun, KS 67442

Glenn

(c) 785-826-0870

(h) 785-668-2368

Chuck

(c) 785-452-2961

Brandon

(c) 785-452-8148

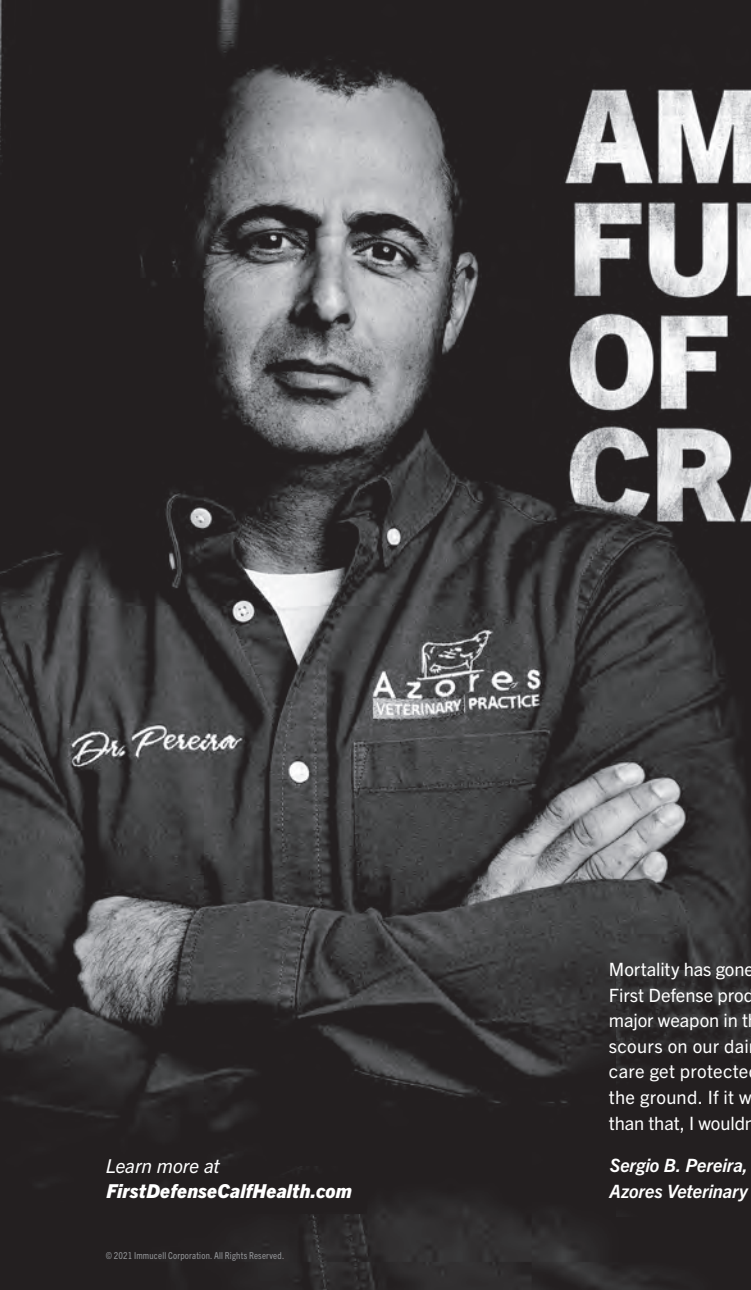
(h) 785-668-2454

www.oleencattleco.com

oleencattle@hometelco.net

LOCATION: 1 1/4 miles south of Falun (20 miles SW of Salina)

AM I FULL OF CRAP?



Mortality has gone way down. The use of First Defense products has proven to be a major weapon in the fight against neonatal scours on our dairy herds. Calves in our care get protected as soon as they hit the ground. If it was more complicated than that, I wouldn't be standing here.

Sergio B. Pereira, DVM
Azores Veterinary Practice

Learn more at
FirstDefenseCalfHealth.com

© 2021 Immucell Corporation. All Rights Reserved.



**THE BEST VACCINE FOR SCOURS,
ISN'T A VACCINE.**



Broken B Herefords

Daughter of CO L1 DOMINO 106Y 1ET



Daughter of CO L1 DOMINO 693D 1ET



106Y & 693D are both delivering the high quality results we expected when we purchased them. The proof of that is in the kind of females that they are leaving us to build around. That core and the use of exemplary AI sires like CL 1 Domino 9164G 1ET and HH Advance 3297A ET will continue to yield the kind of cattle we want to raise, the industry needs, and our customers demand.

BROKEN
B
HEREFORDS

**BULLS, FEMALES & HAY
FOR SALE
AT THE RANCH**

**Oliver & Caitlin Beall
Ira, Orrin and Verity
2538 S Road
Natoma, KS 67651
785-458-2145
orbeall@gmail.com**

HEREFORD *America*

**Largest privately-owned
Hereford newspaper in North America.**
Serving Registered and Commercial Hereford breeders
since 1996.

- 7 issues per year
- Interesting articles
- News & Opinions
- National Advertising
- Sale Coverage
- Social Media
- The Livestock Link,
our sister company,
provides videoing,
video sales,
online sales service
and sale clerking

Jill and Marc Hotchkiss

**13823 Beaver Creek Place • Reva, SD 57651
605/866-4495 (office) • 605/490-1409 (cell)**

www.herefordamerica.com



A Complete Breeding Program...



CL 1 Domino 9164G 1ET 44010095
9164 has matured into a very impressive Herd Sire. His daughters are very functional females that are easy on the eye and made right. They are good uddered with plenty of milk. Can't wait to watch them grow up. The breeders that have used him AI all are reporting the same and have used him again. His bulls are also very correct, thick, and are being well accepted by both registered and commercial ranchers. Owned with Meitler's.



OBH Wrangler 3137D P43673608
3137 has really helped us along the way to starting a polled herd. His daughters are going to be the kind that will make a solid foundation as we get closer to our homozygous goals. They are made like we like them. This spring 3137 qualified as a Sire of Distinction as recognized by the AHA. Owned with Ollerich Brother's in South Dakota.



**Raising Practical, Functional Cattle with a
Common Sense Approach**

**Private Treaty Sales
Horned & Polled Bulls
and Females**

Collecting ACTUAL Data on the Ranch &

in the Industry:
Birthweight, Weaning Weight,
Yearling Weight, REAL Carcass Data,
Fertility, Common Sense Feeding

Granzow Herefords

**Tom, Mary, & Tobyn Granzow
765 South 3000 Road
Herington, Ks 67449
785-466-2247 or 785-466-6438
www.granzowherefords.com**





Always Guiding Our Family
&
Our Program



For Sale Private Treaty
Bulls & Heifers
All Year Long



Douthit-Downey Land and Cattle LLC
1805 RS 115
St. Francis, KS 67756
Megan (785)332-8575
Chuck (785)332-4034
www.douthitherefords.com

Listening to what our customers need to make their operation a success

Introducing Our Newest Herd Sire Addition



FS ADVANCE 1095J ET

(DLF,HYF, IEF, MSUDF) 44406406

SIRE: HH ADVANCE 5107C ET

A fancy, smooth made 5107 son out of a top performing donor cow: 1095J is a big bellied, thick topped and beautiful fronted Herd Sire. He is a great calving ease bull with tons of carcass and maternal strengths. His dam, 325A, is a direct daughter of the 023A donor, perfect uddered, freckle faced, and pigmented.

Other Sires in Use:

LW 4126 ADVANCE 758E

B&D ADVANCE 6507

FS ADVANCE 9105G

FS ADVANCE 1079J

AI Sires:

CL 1 DOMINO 295M

HH ADVANCE 5107C

CL 1 DOMINO 144Y

CL 1 DOMINO 955W

Also see us for all your livestock hauling and hay handling needs. We carry *Barrett* and *Travalong* Stock/Horse Trailers, and *DewEze* Balebeds, Flatbed and Inline Hay Trailers, and *Diamond W Wheel Corals*. Also a full line of Front Replacement Grille Guards for those Feed and Town Trucks.

Geffert Herefords

Lynn & Kathy,
Kyle, Megan, Kyler & Kayden

10515 S Willison Rd
Haven, KS 67543
620-465-2346

gefferttherefords@hotmail.com

CE	7.9
BW	1.7
WW	57
YW	87
DMI	0.4
SC	1.0
SCF	20.7
MM	32
M&G	61
MCE	7.1
MCW	87
UDDR	1.10
TEAT	1.30
CW	90
FAT	0.011
REA	0.55
MARB	0.06
BMIS	434
BIIS	506
CHBS	135

GH

Reach Your Buyers In The Four State Area's
Trusted Ag Source...

FARMTALK

Your Livestock Connection **News**



KANSAS • MISSOURI • OKLAHOMA • ARKANSAS

Give Our Marketing Team A Call

1-800-356-8255

620-421-9450

620-421-9473 Fax

P.O. Box 601, Parsons, Kansas 67357

info@farmtalknews.com

www.farmtalknews.com

Quite A Spring



We have always been pleased with how our cattle have done in the feedyard and have also been very pleased with how the AHA Hereford Feedout Program has been handled at HRC Feedyard in Scott City. We have participated for four years, but this year was certainly special. The pen we had on feed graded 97.6% Choice and Prime, with 10% being Prime. To top that off we had a Validated steer out of a Tested X651 cow that Lee Mayo, Shane Bedwell, and Trey Befort hand picked and entered into the Beef Empire Days live and carcass show in Garden City, KS. He had a .90 marbling EPD and this time the genetics shown through. He ended up placing 4th in the carcass show against all breeds and hundreds of cattle from all the large feed yards in southwest Kansas that had hand picked animals from thousands of head of fed cattle. The carcass numbers on this steer were also very impressive, posting a Prime /Yield Grade 2.66 carcass that proves we got it right when we put more emphasis on carcass merit. The Tyson plant representative specifically called out the steer during the awards ceremony, stating he could tell by the Steer's maturity that he was one of the youngest steers in the entire competition. Thank you to all the folks that made this possible.

Bulls & Females for Sale Private Treaty at the Ranch

Visitors Always Welcome

REED POLLED HEREFORDS

505 1st Rd., Clifton, KS 66937

Darrin Reed 785-275-1533

reedseed1@icloud.com

www.reedpolledherefords.com

TS RANCH

Herefords & Quarter Horses

60th
Annual Sale

last Saturday in February
at the ranch

South of Cottonwood Falls, Kansas

**Check us out on
Facebook!**

WES BAILEY
620-583-4172

BUCK BAILEY
620-340-2237

MARCIA BAILEY
620-583-7246

STALLIONS

TR Kit Rey

CRR Hurricane Cat

Blue Lil Hickory

Hairpin Sure Is Blue

TS Rawhide Cutter



HPI

Creative Services

Contact HPI Creative Services
to assist you with your
next creative marketing piece
to showcase your herd.

HPI Creative Services offers a talented creative team for promotional projects. Experienced staff can take a sale book, directory, brochure, flyer or other project to the next level.

Projects on a bid basis include catalogs, directories, brochures, flyers, postcards, business cards and other projects (stickers, posters, etc.). All sale catalogs developed through Creative Services are available on Hereford.org and Herefords On Demand for viewing.



sale catalogs
state directories
advertisements
brochures
newsletters
annual reports
postcards
marketing flyers
business cards
web banners
stall cards
brand logos
event graphics
banners / signage



American Hereford Association
11500 N Ambassador Drive, Suite 410
Kansas City, MO 64153

www.Hereford.org

Creative Marketing Solutions

To receive a bid or to ask questions regarding the information needed to create a bid for a project, please call Joe Rickabaugh, Caryn Vaught or Bailey Lewis at 816-842-3757.

KANSAS HEREFORD QUEEN



Jalyn Davis, 18, is the daughter of Danny and Amanda Davis from Maple Hill, KS. This fall she will attend Butler Community College and be a part of their livestock judging team. Jalyn is a 12 year member of the Kansas Junior Hereford association and National Junior Hereford association. Jalyn has gone to all but one JNHE since she was born. She has participated in illustrated speech, CHB grill off, quiz bowl, team sales, extemporaneous speech, pen-topen, future professionals, bridging the gap, judging contest, poster and photo contest. Jalyn has attended Faces of Leadership, Fed Steer Shootout Field Day, and BOLD. Jalyn is currently the fundraising chair for the Kansas Junior Hereford Association. Besides being active with the Hereford Association Jalyn is also very active in 4-H. She is an ambassador for her county, council representative, and a club officer.



Aaron Friedt

*Kansas, Minnesota, Nebraska,
and South Dakota*

701-590-9597

afriedt@hereford.org



Field Representative for the Midwest Region #3

Give me a call if you are interested in:

- Assistance in marketing your Hereford seedstock and commercial females.
- Placing an ad in the *Hereford World*
- Creative service projects, including sale catalogs, flyers, postcards, or brochures.
- Buying or selling Hereford-influenced feeder calves.
- Marketing cattle through the Certified Hereford Beef® (CHB) program.

American Hereford Association

11500 N. Ambassador Dr. • Suite 410 • Kansas City, MO 64153

816-842-3757 • www.hereford.org

KJHA Junior Show in Manhattan



The KJHA Board would like to thank the amazing, devoted, hard-working Sue Rowland. For more than 40 years she has served as first the Kansas Junior Polled Hereford Association and then the Kansas Junior Hereford Association advisor. And for many more years than that she helped mentor and haul Kansas junior members to the National Junior Hereford Polled Hereford Show (since 1974) and to other state and regional show. She has made a difference in so many generations of Hereford youth. Her impact will not stop as she steps down as advisor, and she can never be replaced, we just hope she can now sit ring side and watch and enjoy the hundreds of Hereford kids and family who love and admire her for her dedication and commitment. THANK YOU Sue. She is pictured with the four retiring KJHA members who have been members and shown at the Kansas Junior Hereford Show since they were 7. Pictured (l to r) are: Tobi Wilber, Jessica Jensen, Sue Rowland, Jordan Gatz and Wes Denton.

Kansas Hereford Women

2023 Officers and Directors

President	Paula Acheson
Vice President	Michelle Beran
Secretary	Emily Moorman-Meador
Treasurer	Kathy Geffert
Historian/Reporter	Jennifer Gatz
Dist. 1	Pat Reinhardt
Dist 2	Jennifer Gatz
Dist 3	Darla Moore
Dist 4	Deb Evans
At large	Brandy Jones
At large	Emily Moorman-Meador
At large	Caitlin Beall
Jr Field Day	Brandy Jones, Darla Moore
State Fair Hospitality, KHW Membership, Breed Promotions	
Tracy Schlickau, Mary Granzow, Kathy Geffert, Pat Reinhardt	
Ks Queen Contest	Michelle Beran, Emily Moorman-Meador, Jennifer Gatz
Ways & Means, Silent Auct.	Officers & Directors
Nominating	Marlyn Silvers, Gwen Oleen, Paula Acheson
Budget	Kathy Geffert

2023 Membership List

The Kansas Hereford Women was first organized in 1969, and was originally know as the Kansas Hereford Auxiliary. Since its' inception, the organizations objectives have been: promote the Hereford breed and beef production, extend hospitality to established and new breeders, and provide support to the youth and their activities. Currently, KHW activities include supporting the KHA with various needs and expenses, promoting Herefords with a Hospitality table at the Ks State Fair, and supporting youth activities and the junior show in Manhattan. We also provide financial support to the Ks Hereford Queen and the Princess. We usually meet at least once a year at the KHA Annual Meeting for election of officers and directors. During the meeting we also hold a Silent Auction, which is our main fund raiser for the year. Proceeds from the auction, donations, and dues fund our yearly obligations. Interested women are encouraged to join us. New members are always welcome!

Paula Acheson	Megan Geffert	Darla Moore	Lois Schlickau
Michelle Beran	Kathy Geffert	Emily Moorman-Meador	Tracy Schlickau
Bridget Beran	Mary Granzow		Marlyn Silvers
Kim Cerny	Michelle Hanson	Julie Nash	Jane Studer
Jane Deewall	Brandy Jones	Gwen Oleen	Denise Swenson
Keri Geffert English	Andrea Krauss	Dana Pieper	Margeann Warden
Jennifer Gatz	Linda McKay	Rowena Plett	Jessica Younkman
Debra Evans	Erika Meitler	Crecia Reeves	
Gayla Figge	Janis Mickelson	Pat Reinhardt	

KHA Board of Directors - 2023

	<u>1st term ends</u>	<u>2nd term ends</u>
Nathan Staab, Hays	Dec 2021	Dec 2025
Bruce Schlickau	Dec 2018	Dec 2023
Dean Davis, Maple Hill	Dec 2022	Dec 2025
Marc Nelson, Morrowville	Dec 2024	Dec 2027
Brandon Oleen, Falun	Dec 2022	Dec 2026
Darrin Figge	Dec 2025	Dec 2028
Tyler Schultz	Dec 2025	Dec 2028
Brian Coon	Dec 2018	Dec 2023
Brock Johnson, Phillipsburg	Dec 2022	Dec 2026
Shelbi Gustafson, Junction City	Dec 2019	Dec 2024
Dean Davis, Maple Hill	Dec 2020	Dec 2024
Chris Mickelson, Lyndon	Dec 2022	Dec 2027
Kim Cerny, Treasurer		

2023 Officers & Committees

President	Chris Mickelson, Lyndon
Vice President	Brandon Oleen, Falun
Sec. Mgr	Tom Granzow, 765 So. 3000 Rd Herington, Ks. 67449, 785-466-2247
Treasurer	Kim Cerny, Narka
Audit	Lynn Geffert, Brian Staab
Awards & Honors	Nathan Staab, Dana Pieper, Oliver Beall, Brandon Oleen
Banquet	Lynn & Kathy Geffert, Bruce & Tracy Schlickau, Mike & Jane Deewall, Glenn & Gwen Oleen
CHB Sales	Gus Gustafson, Tom Krauss, Tobyn Granzow
Executive	Chris Mickelson, Brandon Oleen, Tom Granzow, Kim Cerny, Nathan Staab
Nominating	Oliver Beall, Mike Deewall, Clint Meitler, Bob Hug
Semen sale	Danny Davis, Craig Beran, Chris Mickelson, Brian Staab
State Fair	Gus Gustafson, Dean Davis, Dana Wolford, Brandon Oleen

KANSAS HEREFORD ASSOCIATION

MEMBERSHIP LIST

Each member is listed alphabetically, along with address, telephone number and directions to the farm or ranch. The code after the member's listing denotes the district the member lives in. "O" denotes an out of state member.

-A-

ACHESON CATTLE CO. (O) - 3303 N Shefford St., Wichita, KS 67205. Owners: Alex, Rebecca, Cooper, Emmett, and Rhett Acheson. Phone: 785-366-1185. Email: acheson.alex@gmail.com. Raising quality Herefords with the Acheson family in Kansas.

ACHESON HEREFORDS (D2) - 1374 Quail Road, Hope, KS 67451. Greg & Paula: PO Box 86, Woodbine, KS 67492. Phone: 785-257-3541. Also: 785-366-6190. email: gpacheson@tctelco.net. Directions: Chapman exit on I-70 south 12 miles, 1 mile west then south on Quail Rd. to the drive, or 4 miles west of Woodbine on 1400 Ave., south on Quail. Greg and Paula purchased grandfather George Riffel's ranch in 2002. They currently have 35 registered Polled and Horned Hereford cows.

ADAMS, JOHN - Adams Cattle Co., LLC - see XIT Ranch

ALLAMAN, RAY (D3)-4114 W. Rucker Road, Junction City 66441. 785-238-4784 50 Commercial Herefords, cow herd basically Line One and using the best of Line One and Canadian bulls. Sells cattle in consignment and CHB sales and participates in NHF.

AUGUSTEIN HEREFORDS (D3)-1660 West Ks Hwy 4, Council Grove, Ks. 66846. Owner: Ernest & Karen Augustein. Location: 4 miles east of White City on Hwy 4 or 5 miles southwest of Dwight on Hwy 4. Once you try Herefords you won't go back to Angus. Bring back my 6 frame cattle no more 5s. We sell pounds! Visitors Welcome Anytime.

-B-

B & D HEREFORDS (D2)- 1350 NE 100 Avenue, Claflin, Ks. 67525. Owners: Craig Beran 620-587-3709, Gerald Jr. 620-587-3407, Terry (Tex) 620-786-4372, Kevin: 620-617-3409, Matt Beran: 620-617-1834. email: beranbrothers@hbcomm.net Location: Beran's in and around Odin. Cow Herd: 300 Registered Herefords, 300 registered Angus, 200 Commercial. Herd Sires: HH Advance 6065D, HH Advance 6319D, CL 1 Domino 8146F ET, HH Advance 8010F ET, CL 1 Domino 7205E, CL 1 Domino 7188E ET, HH Advance 0011H, and CL 1 Domino 215Z (Owned with Cooper).

BEALL, OLIVER & CAITLIN - See Broken B Herefords

BELTZ, JASON, JILL, JACE & JOSIE - See JB Livestock

BERT, C.R. - See Route 3 Partners, Inc

BINDER, DAN & FAYANN (D5) - 138 Arrowhead Road, Inman, KS 67546. Phone: 620-242-2136. email: danbin.db@gmail.com. Some purebred and some crossbred Hereford base commercial cows. We maintain a purebred polled Hereford commercial herd that we crossbreed on with Angus, Gelbvieh, and Shorthorn to produce F1 replacement females to sue in our commercial herd. We started by purchasing the Arnold Wittorf herd.

BLACKJACK HEREFORDS, LLC (D5) - 13159 Allen Rd., Fredonia, KS. 66736. Owners: Jack & Cheryl Evans. Phone: Home: 620-378-4764, Cell: 620-288-0611. email: blackjackhere2010@live.com. Location: 1 mile south, 1 mile west, and 3/4 mile north of New Albany, KS. Located on the edge of Flint Hills Country. Cowherd: Line One breeding.

BLEW, CURT & ROSS-See Blue Top Herefords

BLUE TOP HEREFORD RANCH (D5)- 2015 31st Road, Inman, Ks. 67546. Owner: Curt Blew. Curt 620-242-7203 Location: 8 miles west and 1 mile north of Inman or 11 miles north of Hutchinson on Plum Street. Cow Herd: 50 Registered. Line One cows. Raising F1 Black Baldy calves.

BOOKCLIFF HEREFORDS (D2) -(Lifetime Member) 4106 184th Street, Russell, KS 67665. Owners: Tom & Andrea Krauss Brand-Rafter K on right shoulder Tom; House & Shop (785) 483-3004, Fax: 785-483-2910 Cell 445-2529, E-Mail thomas.krauss@rwhisp.com. Location: from I-70/ Hwy 281 interchange at Russell, ½ mile south, 1 mile west. 80 Registered Horned & Polled Hereford Cows, 50 commercial cows. Herd Sires: Rafter K King Ten 0063 ET, WS King Ten 6211 ET, Rafter K Yampa Britisher 0071 (Double Bred Achiever son), Rafter K Glenlivet 1018 (22T son), Rafter K Domino 3020 (3027 son). AI Sires: UPS Domino 5216, Anchor 44U, JMS Victor 967 202, Monument 9841 , Feltons Legend 242, UPS Domino 3027 Linebreeding to Ferry Carpenter bloodlines with major emphasis on King Ten. Member of the PTP Alliance. Complete feedlot data on all steers since 1994 & we are in our 8th year of RFI testing our bull calves & replacement heifers. Cattle for sale private treaty at the ranch and in the yards at Denver.

BOWLING RANCH (D4) - 9101 E. Stateline Rd, Newkirk, OK 74647. Nancy Bowling, owner: nkbowling@yahoo.com. Tim Stidham, Ranch manager, phone: 405-742-4553, Kris Young commercial herd manager, phone: 620-660-0971. bowlingranch@outlook.com. Ranch Phone: 580-362-5026. 100 registered Hereford and 500+ commercial Red Angus and Hereford cows. Annual sale in November selling 40 Hereford bulls and also registered and commercial females.

BRADLEY & SONS HEREFORDS- 1083 E 1400 Rd, Lawrence Ks 66046. Ranch 785-842-2044, Office 785-843-9533. Owners: Bev Bradley, Amy and John Bradley. Location: 4 miles south of 23rd & Iowa (Days Inn Motel) then 3/4 mile east on N. 1000 Road. Cow Herd: Registered Line One cows - reproductive efficiency and forage utilization emphasized. Herd Sires: GM L1 6001 and GM L1 02 382.

BRANNAN & REINHARDT POLLED HEREFORDS (D2) - 418 W. Diel, Otis, KS 67565. Phones: (C): 785-387-1846, 785-387-2428; e-mail: rhinos@gbta.net. Kent and Pat Reinhardt live in Otis. Larry, Allison, Kylee, Bevan, Lilly and Tyler Gradig are at the Bison ranch. Chris & Kylee Detherage live south of LaCrosse. Derek, Jennifer, Landon, Alexa and Izzi Reinhardt live in Ness City, KS. Nelson lives north of Galatia. Headquarters is ½ mile north of Bison, KS on county blacktop or from the intersection of K-4 x US 183 in LaCrosse, KS, 6 miles east on K4 and ½ mile south. Cowherd is Tradition 434V and Feltons Domino 774 bred. Herd sires: SHF Galvanized D256 6331 ET (a son of SHF Drumline 001A D256) and SHF Gauntlet B413 G085 (a son of EFBEEF BR Validated B413) with AI bulls ILR Red Power 456, SHF Gin Rummy B716 G088 and BEHM 100W Cuda 504C. Web-site: **Bropolledherefords.com**

BREINER, DAVID & FAMILY- See Mill Creek Ranch

BROKEN B HEREFORDS (D3) - 2538 S Road, Natoma, KS 67651. Owners: Oliver, Caitlin, Ira, Orrin and Verity Beall. Phone: 785-458-2145 email: orbeall@gmail.com. Our cowherd is both horned and polled with daughters of OPB Pure Domino 803, F 3027 domino 256, and CO L1 Domino 106Y. Herd Sires: CO L1 Domino 106Y and CO L1 Domino 693D 1ET (Owned with Granzow Herefords). AI Sires: CL 1 Domino 789T and CL 1 Domino 0145X 1ET, CL 1 Domino 9164G 1ET. Herefords for sale private treaty.

BROWN, JAY, CINDY & FAMILY- See JC Cattle Co.

BTS HEREFORDS (D5) - 14601 South McNew Rd., Hutchinson, Ks 67501. Owners: Bruce & Tracy Schlickau, Greg & Emilee Schlickau, & Sara Schlickau. Phone: 620-459-6576, email: btshereford@gmail.com Location: 5 miles south of K96 & Hwy 14 jct., 1 mile east, then 3/4 south. AI Sire: MCR Bluestem 977. Herd Sires: JA L1 Domino 2707Z, SBS 2707Z Dom 462, Nichols 3053 Domino 619, BTS 977 Bluestem 763, BNT Contender 93ET. Selling bulls and females private treaty. Visitors always welcome.

-C-

CARSWELL – NICHOLS HEREFORDS (D2) – Lifetime Member – Harold & Pat Carswell, Osborne, KS (785) 346-2520; Jim & Carol Nichols, Alton, KS (785) 476-5842.

CK RANCH (D2) - PO Box 127, Brookville, KS 67425. Owner, John Vanier. Office: 785-823-3794. Manager, Chuck Norris 785-225-6799 (H) or 785-643-1403 (C). 2000 commercial cows (Hereford/Red Angus).

CERNY HEREFORDS (D2) -2939 Birch Rd , Narka, KS 66960. Jim, Betty & Kim Cerny. Phone: 785-527-0305 (Jim) or 785-822-4802 (Kim). Cow Herd: 75 registered and 75 commercial Hereford cows. Using sons of HH Advance 6319D, G 942 Sustain 405, B&D L1 Domino 9335 ET, CJH Harland 408, GH 3786 Full Throttle 7F, and HH Advance 6065D. Registered and commercial cattle for sale by private treaty.

COLEMAN HEREFORDS (O) - 1271 County Rd. 115, Westcliffe, CO. 81252. Owners: Ken and Suzanne Coleman. 100+ registered cows. Coleman Herefords is located in the Wet Mountain Valley near Westcliffe, Colorado at 8000+ feet elevation. Our cattle are Line One breeding. We strive to produce balanced trait, trouble free Herefords commercial producers can appreciate. If you are ever in the area, we hope you can stop by. We sell private treaty and in the Jamison Hereford ranch Sale. email: ken@colemanherefords.com

COON HEREFORDS (I) - Brian Coon, 7045 Rd 22, Goodland, KS 67735. Phone: 785-821-2190, email: coonherefords@gmail.com. www.coonherefords.com. Coon Herefords is a commercial and registered operation focusing on overall quality, disposition, carcass merit, and maternal characteristics. Within our registered herd we are utilizing Polled and Line One Horned Herefords. Herd Bulls: Coon Durango 802F ET, SHF Gallop Z115 G227, Coon Domino 624D ET, Coon Domino 624D ET. AI Sires: CL 1 Domino 710E 1ET, SHF Wonder M326 W18ET, Behm 100W Cuda 504C, CL 1 Domino 215Z.

CORNERSTONE RANCH, LLC (D4) - 3580 CR 5400, Independence, KS 6730. Owners: Steve & Becky Smith. Phone: 417-349-0630. email: Cornerstoneranch@outlook.com. We are a new herd getting started by flushing a few high quality Hereford cows and using these genetic packages to build a herd and produce seedstock.

CRAIG HEREFORDS (O) - PO Box 152, Phippsburg, CO. 80469. Phone: 970-736-2272. email: dcraig45@yahoo.com. Owners: Dan & Karen Craig, Brandon & Alex Craig 25 miles south of Steamboat Springs, CO. 40 head of registered polled and horned cows. Herd Sires: Hills Galore 44Z Rewind 147E, Schu-Lar Selection, Schular On Target, Churchill Red Baron 8300F ET. Member of the PTP Alliance. Private treaty sales in the fall.

-D-

DARNELL HEREFORD RANCH (O)- 39722 State Hwy 34, Freedom OK 73842. Sandy: 580-589-2667 (home), 580-430-9254 (cell). Owner: Roy Darnell Family. Location 20 miles south of Coldwater, Ks. Registered Line One cowherd. Herd Sires: L1 Domino 0474, L1 Domino 663. AI semen and certificates for sale on foundation sires L1 Domino 96943 and L1 Domino 920454.

DAVIS HEREFORDS (D3)- 29111 Keene - Eskridge Rd., Maple Hill, Ks 66507. Dean: 785-256-4643, Danny: 785-256-4010. Location: Keene-Eskridge Exit 342, 13 miles west of Topeka on I-70, then 3 miles south. Cow Herd: 80 registered daughters of DD Solution 306, H5 9131 Domino 2185, NF Advance 6125 ET, UPS Domino 9021, LSW WCC About Time X06, DD 2185 Domino 501, H Full Throttle 5073 ET, NJW 84B 10W Journey 53D, H FHF Advance 628 ET. Current Herd Sires: KJ 555 Leader 117F, C Bar 1 Bailee Valor 9354 ET. AI Sires include: HCC Arapaho 6037 ET, K Rustic 711 ET, H5 6128 Domino 8193 ET. Bulls, heifers, cows and calves for sale at the ranch. Visitors always welcome.

DEEWALL FAMILY HEREFORDS (D5)- 1074 Highway 1, Coldwater, Ks 67029. Owners: Mike and Jane Deewall and Family. 620-635-5978, 620-635-

6511(Jane).email:nashoriginals@unitedwireless.com.website: www.deewallherfords.com Location: 8 miles south of Coldwater, KS on Hwy 1. Cow Herd: 70 registered and 10 commercial. Linebred Franklin Nash Advance Domino and President Mischief breeding. Herd Sires: D Advance 028C, D Advance 036C, D Advance 112C, D Advance 170C. AI Sires: Advance Red 11, Margarita Sebastian (English), D Triple Advance, D Advance 538C. Visitors Always Welcome.

DIAMOND U STOCK FARM (D5)- (Lifetime member) - 1855 19th Road, Sterling, Ks. 67579. 620-278-2287. Owner: Tony Renollet. Location: 3 miles north, 3 miles east, and 1/2 mile north of Sterling. Cow Herd: Commercial Line One Cows. Using Red Angus Sires to produce red baldy steers and heifers.

DORRELL CATTLE CO.(3) - 550 265th Rd., Highland, KS 66035. Owners: Gary, Karen, and Allen Dorrell. Gary: 785-850-0096. email: dorrellcattle@gmail.com. Located 3.8 miles north and 0.5 miles east of junction of US Hwy 36 and KS 120. Cowherd: 25 Registered Hereford cows. Herd Sire: KJ 144F Achiever 312J and PCC 7028 134E Partner 1047. AI Sires: NJW 160B 028X Historic 81E ET, H Bell Ringer, KJ BJ 58Z Contender D56 ET. Heifers and Bulls sold private treaty. Visitors always welcome.

DOUBLE II RANCH (D5) - 1087A 190th, Hillsboro, KS 67063. Stuart: 620-382-7594, Lea: 620-382-5299. Owners: Stuart & Lea Isaac.

DOUBLE J HEREFORDS- (Lifetime Member)- 381 E. Limestone Rd, Phillipsburg, Ks. 67661. Ken: 785-543-5526 or 785-543-8096 (c) or , Brock: 785-543-2841 or 785-543-8095 (c). Location: 2 miles east, 6 miles north and 3/4 east of Hwy 36 & 183 jct., Phillipsburg. Owners: Ken and Brock Johnson. Cow herd: 275 registered and 75 commercial cows. Herd Sires: JA L1 Domino 5419, JA L1 Domino 6914, FS 612, FS 7003, FS 8027, UU 7241, KJ 3297 43-8, BJ 6007 27-8, KJ B1-4 59-8, BJ 5107 9009, KJ 6007 9036. AI Sires: CL 1 Domino 6187, CL 1 Domino 4100, HH Advance 3297, HH Advance 6007. Selling bulls and females private treaty.

DOUTHIT HEREFORDS (D1) - 1805 RS 115, St. Francis, KS 67756. Walter Douthit, Megan Douthit-Downey, Chuck Downey. Phone: 785-332-8575. email: ollie_ksu@hotmail.com.com webpage: www.douthitherefords.com Location: 3 miles north, 1 mile east and 6 miles north of St. Francis. Our goal is to raise practical cattle. This is achieved by our belief of: if we pull em we cull em. Dispositions are a must, udders are of utmost importance, and seed stock is developed on a high roughage diet...all the while not forgetting the carcass quality and growth side of things. We sell all bulls and heifers private treaty at the ranch year round. Visitors welcome anytime!

-E-

EICHENBERGER FARMS (2) - 1006 Riley Road, Pomona, KS 66076. Phone 785-566-8818. Owners: Bob Eichenberger family. Using Hereford and Angus genetics from the best of lines to produce top quality Hereford, Black White Faced, and Angus replacement heifers and steers.

EVANS HEREFORD FARM (EHF) (D4) - Terry and Matt Evans & Kimber Stithem. PO Box 141, Fall River, KS., 67047. Phone: Terry: 620-212-3403, Matt: 620-433-7513, Kimber: 620-433-2678. Cowherd consists of 60 Registered Hereford, 40 Registered Angus, and 300 Commercial Black and Black Baldy cows. Herd Sires: HH Advance 3297A ET, HH Advance 221 ET, BJ EHF 1013 L1 Advance 373, BLACKJACK 109 L1 471, and EHF 185 L1 Advance 462. Selling Hereford and Angus bulls annually in the McCabe Genetics Spring Production Sale.

EVANS, JACK & CHERYL - See Blackjack Herefords

-F-

FEHLMAN CATTLE SERVICES (3) - 3680 Union Rd., Junction City, KS 66441. Howard, Deb & Kati Fehlman. Complete cattle services including hoof trimming, horn sloping, and sale prep. Also a cow herd consisting of high quality bulls and females.

FIGGE BAR 5 FARMS(2) - 515 W Elm Street, Onaga, KS 66521. Phone: 785-456-5762. email: figgebar5farms@gmail.com. Darrin and Gayla Figge and children Tyree and Delaney. The cowherd consists of registered and commercial Hereford cattle with some polled and Red Angus influence. Bulls and heifers for sale private treaty.

FLORY POLLED HEREFORDS (D3)- 618 E 800 Rd, Lawrence, KS 66047. Owner: Mike Flory and family. Phone: 785-865-3444, email: mike.flory@sbc-global.net. Polled Herefords with a cowherd base of mostly old line JB Trojan breeding with additions of Felton, Line One, and Mark Donald. Herd Sires: FPH 0125 POLLED DOMINO 736, FPH 408 DOMINO 774, and TPHF 923 COWBOY TZ023 TROJAN. AI Sires: HARLAND.

FLYING R POLLED HEREFORDS (D3) - Marty McClelland, 4226 NW Rossville Rd., Rossville, KS 66533. Phone: (Home) 785-584-6519 (Cell) 785-220-3886. Located 10 miles west of Topeka on I-70 at exit 346, then 5 miles north. Big news for us. With the 2022 Pick of the Herd from Rausch Herefords, we brought home both GR Miss New York 1220 and her dam GR Miss Advance 28. Planned matings are with EPIC, our 4R son and our young Genesis son. Also planned is a fancy alfalfa buffet to celebrate "Momma Cow", 2B09's 18th birthday. Private treaty sale of cows, bulls, and 4H projects must happen this year. Email us at FLYINGRFARM@gmail.com.

FOX HEREFORDS (D5) - 12540 Smokey Ridge, Guthrie, OK 73044-5147. Owners: Ed and Norma Fox. 620-770-2266 (C). Location: 7 miles south of St. John on Hwy 281 and 3/4 mile east. Cow Herd: Straight Canadian from Canada since 1972. Herd Sires: FOX BLCHD STAND MO LE 24Z, FOX Stanway STD BLCHD LAD 44A, FOX STANWAY BRITISHER LAD 16C, MN 516Z STAN MO LE 426ZC, LO 84C DANDY LAD 47F, LBH 75S STD BRIT LAD 80F.

-G-

GATZ STOCK FARM (2) - 111 US Hwy 36, Fairview, KS 66425. Phone: 816-387-7680. email: gatz@rainbowtel.net. Taylor, Jennifer, Jordan, Lauren, & McKenna Gatz. Registered Herefords and very active in Kansas junior programs.

G&R POLLED HEREFORDS (D2) -Sue Rowland, 1272 8th Rd., Marysville, KS. 66508.785-562-2091(House), 785-562-7760 (Cell) sueellenrowland@hotmail.com. Grant McKay, manager: 308-470-1190. Located approximately 1 mile west of Marysville on Hwy 36 to farm sign, then 3/4 miles south.

GEFFERT HEREFORDS (D5)-10515 S. Willison Rd. Haven, KS. 67543. 620-465-2346. Owners: Lynn, Kathy, Keri, and Kyle & Megan Geffert. Location: 1/2 mile west and 2 1/2 miles north of Haven. Herd Sires: LW 4126 Advance 758E, CL 1 Domino 048X, GEFF 2125 Dom 502C. AI Sires: HH Advance 5107C, CL 1 Domino 295M, CL 1 Domino 955W, CL 1 Domino 144Y.

GLM HEREFORDS (D3) - 1226 8th Road, Marysville, KS 66508. Phone: Home: 785-619-6086, Grant: 308-470-1190, Linda: 402-239-2695. email: glmherefords@bluevalley.net. Website: glmherefords.com Located 1 mile west of Marysville and 1/4 south. Herdsires: Blair's Ag 358C Iron Will 7G, BG BP CD Novel Concept 1H, GLM 1920 Powerball 1715. AI Sires: W:B Mr. Canada 10Z 15B, NJW 84B 10W Journey 53D, MCM 696 Varsity 801F ET. Donors: Glenlees KDY 27C Prospect 41F and VCR 507C Serenity 946G . We sell bulls, females, show prospects and frozen genetics by private treaty and consignments. Visitors always welcome.

GOEDEKE HEREFORDS (D4) -634 W 515 Avenue, McCune, Ks 66753. Phone: 620-704-3308. Owners: Darrel Goedeke, McCune and Darren Goedeke, Nevada, MO. Four miles east of Junction 400 Hwy and 126 Hwy, then 1.5 miles north, 0.6 miles east or 5 miles west of 400 Hwy and 7 Hwy junction, 1.5 north and 0.4 west. Cowherd: 70 Registered Herefords. Herd Sires in Use: DD Full Throttle 881, GH L1 Domino R351, JAK L1 Domino F289, JAK L1 Domino H288. Bulls and show steers for sale Private Treaty.

GRANZOW HEREFORDS (D3)-Tom, Mary and Tobyn Granzow. 765 South 3000 Road, Herington, Ks. 67449. Phone: Tom: 785-466-2247, Tobyn: 785-466-6438. Located 7 miles north of Hwy 56 and 77 intersection at Herington and 2 miles east 1/4 mile north. Cowherd: 80 registered Herefords & 60 commercial cows. Herd Sires: CL 1 Domino 9164G 1ET (owned with Meitler's), CO L1 Domino 693D 1ET (owned with Broken B Herefords), OBH Wrangler 3137D (SOD) (Owned with Oellrich Brothers), SH Masterplan K605, JAK L1 Domino H314, AI Sires: OXH Mark Domino 8020, CL 1 Domino 789T, Hills-Galore 44Z Rewind 147E, HH Advance 5019C ET. Member of the PTP Alliance. Feedlot performance & Carcass testing. Selling Hereford Bulls and Females and BWF Females. website: www.granzowherefords.com

GRIMMEL SCHAAKE CATTLE COMPANY (D3) - Shane & Melissa Schaake. Mailing address: 9969 Rosemary Lane, Manhattan, KS 66502. Ranch address: 7634 Lake Elbo Road, Manhattan, KS 66502. Phone: 443-417-4842. Email: mgschaake@hotmail.com. Website: www.grimmelschaakecattle.com. Located in the beautiful Kansas Flint Hills, Grimmel Schaake Cattle Company is owned and operated by Shane and Melissa Schaake. Their mutual admiration for the cattle industry began at a young age, but hundreds of miles apart and in different breeds. Shane was raised on a registered Simmental operation in Kansas, while Melissa, alongside her sisters, pioneered their way into the cattle business as first-generation Hereford breeders on

their family's farm in Maryland. Though their passions originated through different breeds, they were both active members of national junior associations throughout the duration of their junior careers. Today, they remain strong believers and supporters in youth livestock programs. They have dedicated their efforts to building a strong foundation of functional Hereford and Simmental females that not only go back to their families' proven donors, but also by investing in genetics from prominent breeders throughout the country. Solid cow families are the core of the Grimmel Schaake program, and together they have traveled many miles to find females that can perform and excel in multiple environments and facets within the industry. As they continue to work alongside both families and their operations, they are proud to put their own stamp on a herd, a place, and a dream that they built — together. As the finishing touches are being put on the birthplace of Grimmel Schaake Cattle Co., Shane and Melissa are not only excited about where their herd is now in terms of quantity and quality, but excited about the future of this program and where it's headed. Look for their offering of Hereford and Simmental heifers and steers selling alongside their families every fall, and bull calves every spring. Shane and Melissa believe in this industry, they believe in these cattle, and they look forward to working with you!

GUESS, JOSH (D3) - 26685 Waverly Rd. Paola, KS 66071. Phone: 918-804-6340. email: joshmguess@gmail.com. A new member that is raising Herefords and starting a herd in eastern Kansas with quality in mind.

GUSTAFSON HEREFORDS(D3)-7477 Davis Creek Road, Junction City, Ks. 66441. Owner: Gus, Deb & Shelbi Gustafson 785-238-7306. Located 7 miles south of I-70 exit 303 (Clark's Creek Road). Herd Sires: GH 3786 Full Throttle 7F, TG 29B barn Cat 6177, TG 942 Sustain 708, G 22C Super ZZam 811, YV 15Z Super Zam 22C, SR Turning Point 172D. Selling bulls and females private treaty at the ranch.

-H-

H BAR RANCH (6) - Charlie & Darla Moore, 10541 S Cherokee Rd Modoc Ks 67863. Phones: Charlie cell 620-874-0042, Darla cell 620-874-0043, email: cdmoore@wbsnet.org. Located 10 miles West of Scott City Ks. on 96 highway to mile marker 53 at Cherokee Rd then 10 miles South. Herd Sires : BR 128Y Copper 7208, H Perfect Timing 3061, H Perfecto 8009, PLCC HBR 12B Dogface 6122D. Cow herd: 75 registered Polled Herefords.

HANSON MARC, MICHELLE, MCKINLEY, and MARA (3) - 2802 King Rd., Morrowville, KS 66958. Phone: 402-729-7174. Located 9 miles north of Morrowville, KS on Hwy 15, along 28th Rd. The cowherd consists of 75 registered Herefords and 35 BWF cows. Walking Herd Sires: CL 1 Domino 411B, K7 6163 Domino 2020 plus Ohlde sired Angus bulls. AI Sires: CL 1 Domino 215Z, CL 1 Domino 1190, CL 1 Domino 4168 and CL 1 Domino 0227H. Visitors always welcome.

HARMONY HEREFORDS (D1)-Delbert Swihart. 785-299-0843, 2051 County Road 78, Quinter, Ks. 67752 or Devin Sweitzer: 785-299-0633, 2251 CR 70 Quinter, KS 67752.. Registered Herefords. Located 1 miles west, 1/2 mile south, 1 mile

MICKELSON FARM



CHRIS, ERICA, MAE, & MARTI MICKELSON

27582 SOUTH HWY 75 * LYNDON, KS 66451 *



MICKELSON * NEIL & KATHY MICKELSON

785-383-3483 * MICKELSONHFRD@GMAIL.COM

east of Quinter. Cow Herd: 75 Registered and 150 commercial. Herd Sires: JAL1 Domino 430, CO L1 Domino 516, L1 Harmony 8521

HATFIELD, SCOTT & MELISSA: -See Heritage Herefords

HERBEL XP HEREFORDS (D2)-(Lifetime Member)-20161 Saline Road, Lucas, Kansas 67648. Owners: Jon Herbel. Phone: 785-324-2430. Location: 2 blocks west of Main Street to Wolf Avenue, 2 miles south and 1/2 west, north side of road. Cowherd is straight station Line One. Herd Sires: XP L1 Domino 14040 and XP L1 Domino 13060.

HERITAGE HEREFORDS, LLC. (D4) - Owner: Scott & Melissa Hatfield and Nancy Hatfield. PO Box 403, 1614 Delaware Rd, Williamsburg, Ks. 66095. 785-766-0739. Email: heritage66095@yahoo.com. Location: 2 miles east of Williamsburg on Old US Hwy 50. Cow Herd: 90 Registered. Herd Sires: B&D Advance 6507, H Domino 9424 ET, LW 4126 Advance 758E, GM L1 1122 837.

HILLTOP HEREFORDS (D5) - 806 South Essex Heights Rd., Halstead, KS 67056. Owners: Pat & Bonnie Wendling. Phone: 316-772-0806 email: eatherfordbeef@gmail.com Located in central Kansas on Hwy 50. We are a classic Horned Hereford breeder. We are a grass fed beef operation on 80 acres and sell a limited supply of breeding stock.

HOME PLACE RANCH (D4)- 34550 242nd Rd., Cedar Vale, KS 67024. Owner: Don & Beth Land. Phone: 620-218-9731. email: frogbeth74@gmail.com Location: 4 miles northwest of Cedar Vale, KS. Commercial Herefords have been a part of this ranch since 1960. Using Herefords to produce high quality commercial cattle in a crossbreeding program.

HUBBARD, ALAN & SHARON - See Shannon Creek Cattle & Quarter Horses
FRANK HUG & SONS (D3) 2556 West 125th Street, Scranton, KS 66537. Owners: Bob & Tisha Hug and Ed & Gretta Hug. Contact: Bob 785-230-0434 rdhug@msn.com Ed 785-230-7597 fhug.sons@gmail.com. Location: 4 miles north of Scranton. Cowherd: 30 Registered Hereford and 120 commercial Hereford X Angus. Herd Sires: FH 147E Rewind 101J ET, FH 147E Rewind 103J ET, FH Cal 805F ET, Hills-Galore 44Z Rewind 147E (owned with Bookcliff Herefords & Hills Galore Stock Farms - semen available). Established in 1868. Registered Herefords since 1896. TPR Gold Breeder since 2005, Member of the PTP Alliance. Private Treaty offering of Hereford Bulls and commercial bred heifers (Heifers available Nov 1 - calving Feb-March). Visitors are always welcome. Like us on Facebook. Website: frankhugandsons.com

-I-

ISAAC, STUART & LEA - See Double I Ranch

-J-

J&N RANCH (D3)-(Lifetime Member)-25332 Wolcott Rd. Leavenworth Ks. 66048. Owners: Joe & Norma Hoagland. Ranch 913-727-6446. West from Kansas City on I-70, then north on I-435 to Hwy 5, then north on Hwy 5 for 6 miles.

JB LIVESTOCK (D5) - Jason, Jill, Jase & Josie Beltz - 2504 N Meridian, Canton, KS 67428. Phones - Jill: 620-654-6991 Jason: 620-654-6999. email: jillbeltz@yahoo.com. Located 7 miles northeast of Canton. Cowherd: 25-30 Registered Hereford Simmental and Salers/Optimizers. We are 4th generation Hereford and Saler cattle breeders. We have a small herd of registered Herefords. The cows are of Sentinel, Contender & 2296 breeding. AI Sires: High Roller, 2296, Contender & Leader.

JC CATTLE CO. (D3)-Cindy & Justin Brown, 2437 Stahl Rd., Junction City, Ks 66441. Ranch 785-482-3596. Cell: 785-761-8994. Jason, Lori, Cody, & Kaycee Brown, 2769 Humboldt Creek Rd, Dwight, KS 66849 Home: 785-499-5518 Lori's cell: 785-770-7469. Location: 13 miles southeast of Junction City on Hwy 57, then 1/2 mile south on Stahl Rd. Herd Sires:JLB W26 Legacy 1101, ECR 7195 Domino 0272 ET, Hutch W26 Louie 1204, JL Outbreak, GO Larry W26, ECR Extra Deep 9279 - "BOB", JL Diamond 0480. Bulls, females, show heifers, and show steers for sale privately and at Kansas & Nebraska consignment sales.

JAMISON HEREFORDS (D1)- (Lifetime Member)-2271 County Road 74, Quinter, Ks. 67752. Gordon 785-754-3639 Cell: 785-299-0441, Daron 785-650-9639, Ranch 785-754-3424. Owners: Gordon Jamison & Sons. Location: From I-70 Exit at Quinter, 2 miles south, 1 mile east and 1 1/2 miles south. Cow Herd: 500 registered and 300 commercial. Herd Sires: CL1 Domino 860U, CL 1 Domino 9125W, JA L1 Domino 1602Y, CL 1 Domino 555R and other Straight Line One Bulls.

JENSEN BROTHERS (D2) - Kevin & Sheila, Brady, Allie and Kelly Jo Jensen, Kalen & Brooke Cromwell, and Ben Jensen. PO Box 197, Courtland, KS 66939. Phone: Sheila: 785-262-1116, Kevin: 785-243-6397. email: jensenks@courtland.net. website: jensenbros.net. Show barn is 6 miles south of Courtland and 1/8 mile west on hwy 148. Cowherd: 150 head. Herd Sires: UPS Harvester 9985, KJ TWJ 907E Liberty 159H ET, KJ BJ 309C Leader 182F, R Leader 6964, KJ 582 Contender D56. KJ 236X Landmark 210F, KJ BJ 236X Ribeye 207B. Donor Dams: KJ 2054 Misty 274S ET, KJ 2745 Roxy 482Y ET, KJ BJ 339A Coco Creme 746D, KJ BJ 6682 Cher 753D, KJ BJ 339A Chardonnay 907E ET, KJ BJ 686Z Zsa Zsa 176 F ET, KJ B002 Misty Meghan F5 ET. Selling 90 bulls annually. Annual Bull Sale first Thursday in March. The Chosen Female Sale, October 2021. Herdsman: Eddie Sandberg, 765-490-1719.

JOHNSON, KEN (D2)-(See Double J Herefords)

JONES HEREFORDS (D2)-3224 Nail Rd, Abilene, Ks. 67410. 785-461-5607. dcjones@twinvalley.net. Owner: David Jones. Location: From I-70 Exit 281 east of Abilene, 7 miles north and 1 mile east. Cow Herd: 80 Registered Horned Hereford Cows. Herd Sires: LJS Mark Domino 1444, HH Advance 7008E, and FS Advance 511C - EPDs on all bulls are in the top 1 - 5% of the breed. Registered Herefords exclusively and continuously since 1928. Working Australian Shepherds available occasionally. Bred to work.

JUHNKE, JERRY & DIANNE - See L - J Herefords

-K-

KANSAS STATE UNIVERSITY (D3)- Dept. of Animal Sciences & Industry, Weber Hall, Manhattan, Ks. 66506. Dr. Bob Weaver and Shane Werk. Office- 785-532-1460. Mobile: 785-565-1881. Email: bweaver@k-state.edu Legacy Bull and Female Sale first Friday in March in conjunction with K-State Cattlemen's Day. Check us out on the web: www.asi.ksu.edu/bullsale.

KEG HEREFORDS (O) - 39753 906th Rd, Valentine, Ne 69201-1651, Residence: 402-376-1267 Cell: 402-376- 4664, FAX 402-376- 1267. Location: 5 1/2 miles north of Valentine on US #83, then 2 1/2 miles east. Cow Herd Bloodlines: SR Sterling 8109, LCG Master Duty 48K, OCC 3027 Domino 121B, KEG 48K Lexus S610, KEG 48K Sterling U810, KEG U810 Sterling N041 Y137, and WCC 719T 908 Victor 400Y ET. Newer herd sires include KEG 0642 Domino 336 F801, out of a 15 year old Sterling daughter, GH Bobby Kilo Lad 769G, OR 40E Weighty 946W, and KEG 412D Magnum F829 H054. These newer bulls have all been individually tested for feed efficiency and all have a negative RFI score. Purchased herd sires are a son of 3027 out of a Harland dam. We have the first calves out of a son of this bull also. He is out of a 13 year old Alex daughter. We have 28 years of whole herd feedlot and carcass data backing up our breeding plan. We have put 16 herd sires through the reference sire program. Our bull calves are tested at Olsen ranches for RFI and feed efficiency. Yearling bulls are sold at private treaty in March and April.

KORB, SANDY (D3)- 5445 W 152nd Terrace, Leawood, KS 66224. Phone: 785-200-3266 or 785-200-3264. email: sandy@rural-reality.com. webpage: rural-reality.com. Sandy stills loves and has a big interest in Herefords.

KRAUSS, TOM (D2)- (See Bookcliff Herefords)

KUEHL, NATE & JANE (O)- (White Oak Farms)

-L-

LANE HEREFORDS (D4)- 38295 Rockville Road, La Cygne, Ks. 66040. 913-377-4508. Chuck Lane. Location: North of La Cygne on 69 Hwy to Drexel exit, 1 1/2 miles east and 3 miles south, or 399th street exit east to Rockville, then north 2 miles. Using a 335F son and a grandson of 767G. We are selling yearling bulls private treaty and a few females.

L-J HEREFORDS (O) - 3330 Bobolink Lane, Enid, OK 73703-1429. Owners: Jerry & Dianne Juhnke. Mobile Phone: 580-542-0424. email: juhnkej@outlook.com. Located 1 mile west and 2 miles north of Breckenridge, Oklahoma. We are in the process of building a high quality herd of Registered Polled Herefords with an emphasis on maternal and carcass traits. Using AI sires Trust 167Y, Loewen Valiant, Mendel 7G, Genesis G16

LAND, DONALD - See Home Place Ranch

LAUBACH, PAUL - See P&R Herefords

LENINGTON RANCH (4) - 1035 Rd 3, PO Box 217, Cedar Vale, KS. 67024. Owners: Ron & Linda Lenington. Phone: Ron: 785-506-1897, Burke: 620-550-1200, Home: 620-758-2257. email: relcowdoc@hotmail.com. Located 1/4 mile north of Hwy. 166 on Rd. 3. Commercial Hereford Bulls and heifers, F1 BWF heifers for sale privately at the ranch.

LEWIS, KEVIN & RONNA (5) - See One Cow Cattle Company.

-M-

MADER FARMS, INC (D1)- web address is maderfarms.com. Mader Farms Inc. is a family owned farm and ranch located in Sheridan County Kansas, midway between Kansas City and Denver. Founded in 1939, Mader Farms has continuously been in the Registered Hereford cattle business for 80 plus years. Selling bulls, females and semen seedstock all at private treaty. Other enterprises include heifer development, backgrounding and retained cattle ownership through harvest. Hereford cowherd is 200+ head of both polled and horned bloodlines. Ranch and cattle location is 13432 N Road 100E, Jennings, KS 67643, which is 2 miles east and 9 miles south of Jennings, KS OR 16 miles west and 2 ½ miles south of Lenora, KS. Owners are Wilma Mader and family. For cattle contact Herdsman Keith Bowie at 785-675-1198.

MALONE HEREFORD FARM (D4) - Alton & Marie Malone, 1371 Rd F, Emporia, KS 66801. Phone: Home: 620-342-7538, Cell: 620-794-2358. Located south of Emporia on Hwy 99 to Road 140. West 4 1/2 miles to road F., south 3/8 of a mile on Road F. Cow Herd: 80 Registered Herefords. Herd Sires: MHF 257T Hard Cash 2055H, KJ 960E Statement 764K, DKM G73 Raven 81E 2168, MHF 737 Jericho 2105J, H W4 Pure Country 0109 (Outcross - HH Advance 0024K), ANL C 206E Bottom line 11Y 35H, TH 76F 738C Frontier 47H, Bar Star MA6A 036 ET AI Sires: MPH 2103 Eastwood G3, KJ MHPH RW 364C Media 240J ET.

MAYO RIDGE RANCH (D6) - 7050 North Taos Road, Scott City, KS 67871. Lee Mayo and Katie Cornelius Mayo. 620-874-0051 or 970-396-8320 Lee: lee@hrcfeedyards.com Katie: ckatie617@aol.com. The Mayo's have 50 registered cows. All are straight Hereford and the start of their herd with plans to raise high quality Herefords in southwest Kansas.

McCLELLAND, MARTY and JANE - See Flying R Polled Herefords

MEITLER CATTLE (D2)-1237 N 13th Rd, Lucas, Ks. 67648. Darris: 785-658-5208, Clint: 785-658-7028. email: heartlandhay@wilsoncom.us, webpage: www.meitlercattle.com. Owners: Darris & Clint Meitler. Location: 2 and 1/2miles east of Lucas on Hwy K-18. Registered Line One Herefords. Herd Sires: HH Advance 1122Y, CL 1 Domino 9164G 1ET.

MESSNER HEREFORDS (O)- 163728 EW 28 Rd., Laverne, OK 73848. 580-552-1555 or 580-273-9494. email: messner@pts.net Owners: Van & Milton Messner and family. Location: 6 miles south and 11 miles west of Laverne, Okla. Cow Herd 275 Registered. Herd Bulls: CL 1 Domino 091, HH Advance 9293G,

Domino 136J 1ET, HH Advance 6226, CL 1 Domino 7151 ET. Oklahoma's oldest production sale first Saturday in February. Selling annually 200 Hereford & Angus bulls and 75 heifers.

MICKELSON FARM (D3) - Chris, Erica, Mae & Marti Mickelson and Neil & Kathy Mickelson. 27582 South Hwy 75, Lyndon, KS 66451. Phone: 785-383-3483. email: mickelsonhfrd@gmail.com. Cowherd: Commercial and Registered Herefords. Herd Bulls: G22C Super Zam 720, BCC L1 Domino 789E ET, CO L1 Domino 731E, SG 502 Sustain 831. AI Sires: CL 1 Domino 215Z, AGA 121G Stanmore 20J, PDHR 20J Stanmore 47R.

MILBOURN RANCH (D4) - Owners: Arlan, David and Faith Stackley. 10251 NE Cole Creek Rd., El Dorado, Ks. 67042. We have a long and storied tradition of raising the very best commercial Herefords and Black Baldies. We sell feeder cattle and also feed some of our cattle out. We also take in stockers for grazing and are strong supporters of Herefords.

MILL CREEK RANCH (D3) - 20635 Hessdale Rd., Alma, KS 66401. Owners: David & Diane Breiner Family & Chad & Callea Breiner Family. Phone: Dave 785-449-2841 (h) 785-456-4790 (c), Chad 785-564-2091 (c), Ryan 785-207-3070 (c), Clay Breiner and Ashley Bohl. Location from Alma: 9 miles south on Hwy 99 to 99 & 4 jct. East 5 miles on Hwy 99 & 4 to Mill Creek sign. North on gravel road 1 3/4 miles to ranch headquarters. Cow Herd: 100 registered Herefords & Angus Females and 100 Commercial females used in our ET program. Herd Sires: MCR Flint Hills 10Y 5100 ET, MCR Trust Harland 364 ET, MCR Bluestem 977, CJH Harland 408, GV CMR 8553 MR 156T Z100, and SR Sustain 65C. AI Sires: Hometown, Homegrown, Cowboss 199B. email address: millcreekranch@embarqmail.com website: www.millcreekranch.com

MM RANCH (D4) - Owners: Mariam Mih, Alex & Alison Mih, PO Box 2, Chanute, Ks 66720. Phone: 620-431-3917 or 620-212-3250. email: amih@mmherefords.com Website: MMHerefords.com Follow us on Facebook Cow Herd: Over 1000 Registered Polled Hereford females selected for economically relevant traits, balanced EPD's and feed efficiency. All bulls and replacement females are tested for Residual Feed Intake at Green Springs Bull Test with complete ultrasound data collected on all individuals. Cattle are evaluated yearly in the feedyard. We collect data on 300- 400 feedlot carcasses yearly. Our cowherd is built upon this data base. Home of 81 Dams of distinction, 23 CHB Sires of distinction and 3 Sires of Distinction in 2022.

MOON HEREFORDS (O) - Phillip Moon & Lisa Sparrow, P.O. Box 1633, Harrison, Arkansas 72602. Office: 870-743-5003, Cell: 870-715-7244, e-mail: pamoon@windstream.net. Website: moonherefords.com, check our website for more information throughout the year. Herd Sires: SNS 14A Chinook lad 51D, BB Red Rock 55F, SR DS Diablo 209G, SNS 23E Explosive Lad 77G, and Rafter K Domino 0031. Cow Herd Bloodlines: Canadian and Carpenter-Williams. Member of the PTP Alliance. A Total Performance Program focusing on efficient production, maternal strength, & carcass merit for the Beef Industry. Selling bulls and females at the ranch. Cattle for sale will be posted on our website. Location: 9 miles

North of Harrison on Hwy 7. Visitors always welcome. Follow us on Facebook or Instagram: Moon Herefords

MOORE, CHARLIE & DARLA - See H Bar Ranch.

-N-

NEW CENTURY CATTLE (D3) - 17880 Spencer St., Wamego, KS 66547. Owners: Chris, Brandy, Colby, & Chase Jones. Phone: Brandy: 785-527-0644 Chris: 419-689-3176. email: newcenturycattle@yahoo.com. AI and Herd Sires: CH High Roller 756 ET, PCC 7009 173D Maverick 0183 ET, BG LCC 11B Perfecto 84F, TH Masterplan 183F, NJW 73S W18 Hometown 10Y ET, R New York 5083, Churchill Kickstart 501C ET, WGF Wyoming 32B (Hometown son), MSU TCF Revolution 4R, THM Durango 4037, TH 122 711 Victor 719T, CRR About Time 743, LaGrand Reload 80PET, Feltons Legend 242, WGF Legend 946, WGF Investor 431, WGF Domino 482, WGF Viking 935. We have registered Herefords and BWF cows. We raise **FANCY** Hereford Show Steers & Heifer prospects, Bulls, and Hereford/BWF 1st calf heifers, all for sale by private treaty.

-O-

OLEEN BROTHERS (D3)- (Lifetime Member)- PO Box 8, Dwight, Ks. 66849. Ranch 785-482-3864. Owners: Jan & Arden Oleen. 785-482-3398, Cell Phones: 785-466-1421 or 785-466-1422. email: jakoleenbros@tctelco.net. Website: www.oleenbrothers.com Founding member of U.S. Premium Beef as a qualified seedstock producer and a member of the PTP Alliance. Location: 1/2 mile south of Dwight. 250 Reg. Horned Hereford cows and 250 Reg. Black Angus cows and 300 commercial Hereford & Angus cows. Herd Sires: LW 3006 Advance 726 ET, JAK L1 Domino D343, JAK L1 Domino E252, FS Advance 0079H, CL 1 Domino 386A 1ET, CL 1 Domino 4150B, CL 1 Domino 6163D, FS Advance 8044F, CL 1 Domino 1176J 1ET. Annual Production Sale 4th Monday in March.

OLEEN CATTLE COMPANY (D2) - (Lifetime Member) - Falun, Ks. 67442. Owners: Glenn and Chuck Oleen. Glenn - 10272 S. Forsse Rd., cell: 785-826-0870, home: 785-668-2368; Chuck - 6944 W. Thorstenberg Rd., cell: 785-452-2961, home: 785-668-2454; Brandon - cell: 785-452-8148. email: oleencattle@hometelco.net. website: www.oleencattleco.com. Location: 1 1/4 miles south of Falun (20 miles southwest of Salina). Registered and Commercial cattle. Private Treaty Sales. Selling Hereford bulls, Hereford females and BWF females. Herd Sires: O L1 Domino S58, O L1 Ribstone 4203B, O L1 Real Time 6169D, O L1 Domino 8116F, O R294 Domino 847F, O B261 Domino 8193, O L1 Domino 966G ET, and O Advance Anodyne 0138H ET.

ONE COW CATTLE CO. (D5) - 13162 49th Ave., Haviland, KS 67059. Owners: Kevin & Ronna Lewis. Phone: 620-629-0578 or 620-629-0906. Kevin & Ronna bought the herd of Butch Fast when Butch retired and have also added cows from other herds. Selling Horned Hereford bulls at the ranch.

-P-

PAYNE, JAY (D6)- 7995 N 2030 Rd, Leedey, OK 73654. Phone: 580-339-1299. email: paynequarterhorses@elkhart.com Currently running a cow herd of Hereford, Angus, and Red Angus. Herd Bulls are Angus & Hereford. Our goal is to raise top quality feeders and good replacement heifers. We are also Aling to top Hereford and Angus sires.

P & R HEREFORDS (O) - 72251 N 2080 Rd, Leedey, Okla. 73654. Owner: Paul Laubach. Phone: 580-822-5089 (cell). email: paul@pandrherefords.com Website: pandrherefords.com We are located 7 miles north of Leedey on SH 34, 1/2 east, 1/4 south. Cowherd: 120 registered cows. Herd Sires: CL 1 Domino 5110R, P&R Advancer L 418B, P&R Advancer L 522C, P&R Advancer L HVH 6D, P&R Advancer L 636D ET.

PELTON HEREFORD RANCH (D2)- Owner: Brian Pelton, 2710 Rd #9, Zurich, Ks. 67663. 785-662-3245. Location: 3 miles south and 1 mile west of Zurich. Cow Herd: 150 commercial.

PIEPER LAND & CATTLE (D2) - 630 AA Rd., Zurich, KS 67663-7041. located on the Historic Sutor Ranch. David and Dana (Sutor/Moore), Cody and Cady Pieper. Home/Office 785-737-5711, David Cell: 785-737-3931, Dana Cell: 785-737-6096 or 785-737-5755. email: pieperlandandcattle@gmail.com. Directions from Hays: Go north on highway 183 to the 4way stop in Plainville, turn west on Hwy 18, go 3 miles west of Zurich and turn south on 7 Road. Go 3 miles south and turn west 3/4 of a mile on AA Road. Cowherd consists of 150 head of spring and fall calving registered Hereford cows (both horned and polled) along with 150 black baldie SimAngus and Hereford sired cows. Hereford Herd Sires include: KTP Domino 5216 3001(43406080), KJ JP 927P Pawnee 12B (43510098), KJ BJ 319 TNT 003A (P43450686), PLCC CWP Shootout 7515E (43911772), and PLCC CWP Django 8535 ET (44212684). We have bulls, show heifers, and steers for sale at the ranch, always determined to continue the Sutor Family legacy of raising Herefords and making them better. Visitors are always welcome.

.-R-

REED POLLED HEREFORDS (D2) - 505 1st Rd, Clifton, KS 66937. Owner: Darrin Reed. 785-275-1533. reedseed1@icloud.com; www.reedpolledherefords.com Cowherd: 150 registered Polled Herefords. AI Herdsires: EFBEEF TFL U208 Tested X651, Churchill Sensation 028X. Donor Females: SHF Forever P20 X12, KSU Miss Revolution 233 ET. Semen, embryos, and spring yearling bulls for sale private treaty and special sales.

REICHART, JEFF (D3)- (See Triple R Herefords)

REISS LIVESTOCK (D6) - Owners: Val Reiss Family, 1210 Road 9, Weskan, KS 67762. 785-821-1010 email: reissseeds@gmail.com website: www.4reisslivestock.com. Location: 9 miles west of Sharon Springs, and 1 3/4 south on Road 9. Cowherd: 20 Registered and 80 commercial. Herd Sires: Reiss Bull 901 (Belle

Air X BR Chloe 2012). AI Sires: UPS Domino 3027, BR Hutton 4030, Genesis. Selling Hereford Bulls and Hereford and crossbred show cattle. Facebook page: Reiss Livestock.

REINHARDT, KENT - See Brannan & Reinhardt Polled Herefords

RENOLETT, TONY (D5)- (See Diamond U Stock Farm)

RINGER HEREFORDS (D2) - 579 N. 140th Rd, Concordia, KS 66901. 785-243-2004. Owners: Margaret Ringer and Family. Located 11 1/4 miles south of Concordia on US Hwy. 81. Cow Herd: 100 registered cows. Herd Sires: UPS Easy money 7173, UPS Mighty 7876 ET, UPS Homestead 3145, UPS Sensation 3686, JCS Royal Blend 0798.

ROUTE 3 PARTNERS, INC. (D5) - PO Box 130, Larned, KS, 67750. 620-285-7777, 620-285-3349 (fax), email: sharibert@yahoo.com. C.R. & Shari Bert . Eighty head of mostly Line One Hereford cows and twenty commercial black baldies.

-S-

SANDHILL FARMS (D5) - 2048 280th Ave., Haviland, KS 67059. Kevin, Vera, Tyler & Hannah Schultz. Ron and Arnita Schultz. Kevin: 620-995-4072, Tyler: 620-546-1574, Ron: 620-348-4863, email: kevin@sandhillfarms.com website: www.sandhillfarms.com Located 13 miles north of Haviland, 2 east, and 1/2 south. Cowherd: 300 head of cows bred and selected for performance traits including, calving ease, growth, carcass merit, and maternal traits. Check our website at www.sandhillfarms.com for our latest herd sires and additions. Annual sale the fourth Saturday in March.

SCHLICKAU, BRUCE & TRACY - See BTS Herefords

SCHLICKAU HEREFORDS (D5)-11510 E. Irish Creek Rd, Haven, KS 67543. Phone: 316-734-3700 . email: schlickauranch@gmail.com Herd Sires: HH Advance 9073G ET, SH 719E Calvary 022, SH 72C Superduty 818 ET. AI Sires: Trademark 1939 ET, Resilient 10208. Donors by: NJW 73S 3304 Taylor 112D ET, HH Advance 9144W, SHF Exemplary 4037 X120. Registered Herefords since 1913. Selling bulls and females private treaty.

SCHULTZ, KEVIN - See Sandhill Farms

KEN SCHULTZ HEREFORDS (D1)- PO Box 127, Norton, Ks. 67654 Phone: 785-877-5513 (Home), 785-877-2251 (Office), 785-202-0624 (Cellular). Located at 12331 S. Boddy St., Norton, KS 67654. Herd Sires: CL 1 Domino 9125W, CL 1 Domino 860U, CL 1 Domino 215Z.

SHANNON CREEK CATTLE & QUARTER HORSE CO. (D3) - Alan & Sharon Hubbard, 4915 Long Parkway Rd., Olsburg, KS. 66520. Phones: 785-468-3552 (Home), 785-410-5011 (Cell). email: shannoncreek@hotmail.com website: shannoncreekquarterhorses.weebly.com. Using Hereford & Black Angus. We

currently have 100 head of Hereford cows. We sell bred heifers in the fall. We also have 30 broodmares and 4 stallions. All mares and stallions tested 5 panel N/N.

SILVER LINING HEREFORDS (D3) - Owners: Gerald & Marlyn Silvers, 8435 W 295th St. Louisburg, Ks. 66053. Phone: Cell: 913-375-2931. email: geraldsilvers@yahoo.com Directions: From Jct of KS 69 and KS 68 highways go east on 68 to Metcalf Rd (signal lights), turn right (south) and go 2 miles to 295th St. Turn right (west) 3/8 mile. Look for a large beige barn on the south side. Cowherd: 12 head of various bloodlines with a Keynote/Stockmaster influence. Herd Sire: SHF Deer Hunter A216 D69, S&S Buckeye 18G.

SILVERS, GERALD - See Silver Lining Herefords

SPRINGHILL HEREFORDS (D3) - Owner: Dave Stump & Family. 1128 Hwy 9, Blue Rapids, KS 66411. 785-363-7410 (H), 785-556-0124 (Daves cell), 785-562-6685 (Dan Schmidt) email: info@springhillherefords.com A cow herd built on strong maternal strength. Herd Sires: SHF Houston D287 H086, SH/CF Victor One G906, Birdwell Wall Street 0588ET, SH Durango 44U E726, SH Keystone H185. AI Sires: Churchill Desperado 029, Churchill Majestic 903G ET, BG LLC 11B Perefecto 84F, INNISFAIL WHR X651/723 4013 ET, TH MasterPlan 183F, NJW 73S 980 Hutton 109Z ET, SH/KJ Gunsmoke 2296 H116. Bull Sale third Saturday of March.

SQUARE G RANCH (O) - PO Box 469, Thomas, OK. 73669. Phone: 580-661-1146. email: hgagency@yahoo.com. Owners: Harold & Donna Gleason and Family. 250 Registered cows. Bulls and females for sale private treaty.

STAAB, BRIAN & VIRGIL - See VJS Polled Herefords

STAATS RANCH (D4)- (Lifetime Member)- Charles J and Mary Martin. - Retired owners of Staats Ranch, Sedan, KS. Address: 616 Cherry Lane, Bartlesville, OK 74003. Phone: 918-336-6785.

STACKLEY, ARLAN - See Milbourn Ranch

STEPHENS, KEN & MARILYN (O) - See KEG Herefords

STRANG HEREFORDS (O) -2969 County Road 8 Meeker, Colo. 81641 Owners: Mary Strang & Family. 970-878-5362, Mobile 970-270-4445, FAX 970-878-5203, Tom & Lisa Walsh 970-270-9599. Email - strangherefords@gmail.com; Website:www.strangherefords.com. Registered Herefords and Black Angus. High Altitude and PAP Tested Registered Hereford & Black Angus. Hereford Herd Sires: CL 1 Domino 9105W, SH 157K Ribstone 217Z ET, BRC 175W Dandy B07, SH 3027 Domino 607D. AI Sires: CL 1 Domino 215Z & UPS Domino 3027.

STUDER FAMILY (D3) - 2374 Tumbleweed Rd., Frankfort, KS 66427. Owners: Charlie and Jane Studer, Jacqueline and Caroline. Phone: 785-292-4566. email: jstuder2000@gmail.com. Using straight Herefords and black baldies to raise high quality stockers and replacement females.

SUN RANCH (D2) - 116 N 280th Rd, Beverly, KS 67423. Owners: Roger & Jean Hoeh. 785-436-2418, Sunranch@twinvalley.net. Going west out of Salina, 20 miles on I-70, exit 233, south 1/2 mile, west 1 mile and then 1/4 back north. Sun Ranch is located in Cental Kansas, ranching in the beautiful Smoky Hill area, a cow calf and farming operation. Hereford , Angus and Hereford Angus Cross cows running around 375 cows.

SUTOR HEREFORD FARMS (D2)- 630 AA Road, Zurich, KS 67663. Phone: (Palco) 785-737-5711, 785-737-6096 (Dana), 785-737-3931 (David). The cowherd was purchased by Sutor's granddaughter, Dana Pieper and her husband, David. See Pieper Land & Cattle.

SWENSON HEREFORDS (D2)- 1811 Union Road, Concordia, Ks. 66901. 785-243-1609 Kevin's cell: 785-213-2322. email: dswen1811@yahoo.com Owners: Denise Swenson & Kevin Swenson. Location: Two miles north of Concordia on US 81, then 3 3/4 miles east. Located on north side of road. Swenson Hereford sign at driveway. Cow Herd: Line One Breeding. Herd Sires: RLS L1 Domino 820, and RLS L1 Domino 804. Bulls and females for sale.

SWIHART, DELBERT (D1)- (see Harmony Herefords)

-T-

TIEN HEREFORDS (D1)-(Lifetime Member)- 1263 W Navajo Rd., Prairie View, Ks.67664. Owners: Henry and Ann Tien. 785-973-2289. Location: 1 mile south and 1/2 mile east of Prairie View.

TS HEREFORDS & QUARTER HORSES (D4)-1764 Norton Creek Rd, Cottonwood Falls, Ks. 66845. Owners: Elmore Stout family. Phones: Wes: 620-583-4172 or Marcia: 620-583-7246. Location: 5 miles south of Cottonwood Falls on Hwy 177, 1/2 mile east and 1/2 mile south. Annual Sale at the Ranch the last Saturday in February. Follow us on FaceBook.

TRIPLE R HEREFORDS (D3)-18384 Coal Creek Road, Valley Falls, Ks. 66088. 785-633-3342 or 785-220-7551. Owners: Jeff and Beverly Reichart and sons. Location:2 miles north of Valley Falls on main gravel road. Cow Herd: 200 Registered. Herd Sires: Nichols Ace 547, G Sustain 709, Rafter K 7055, G 571 Navarro 485, G 553 Briton 618, - G Fort Domino 704 ET.

-U-

ULBRICH HEREFORDS (D3) - 901 Labette Rd, Pomona, KS 66076. Owners: Doug & Teresa Ulbrich. Cell: 316-253-1734. email: doug.ulbrich73@gmail.com. Location: 10 miles west of Ottawa, KS on Labette Rd. Cowherd: Predominately Line One. Present Herdsire: XP L1 Domino 18003.

UNITED LIVESTOCK BROKERS (D4) - Jay George, 1025 28th Rd NW, Lebo, KS.66856. Phone: 605-391-6230. email: unitedlivestock@mac.com. Offering the very best in sale management and marketing services, including photography, video, and catalog design and printing.

UMBERGER POLLED HEREFORDS (D5) - Owner: Greg Umberger. 3018 U Road, Rozel, Ks. 67574. Phones: 620-527-4472 or 620-923-5120 (cell). email: gregumberger@yahoo.com. website: www.umbergerpolledherefords.com. From Rozel, Ks., 5 miles north, 1 3/4 west and 1 mile north. Registered and commercial Polled Hereford cows. Herd Bulls: SHF Inspire E149 J056, NJW 129E 173D Endure 296H ET, SHF Gusty B413 G108, UPH Hometown 5542 791F, SHF Zane X51 Z115, SHF Alliance Y02 A39, SHF Checkmate 001A C213, SHF Elk Hunter E134, UPH Alliance A39 558D, BR Hometown 10Y 1321 5542, and BR Encore Z311 3358 6256. Special emphasis placed on birthweight, carcass traits, and disposition.

-V-

VALEK, BILL & MICK - See Walnut Grove Farms KS 67601.

VJS POLLED HEREFORDS (D1) - Brian J Staab, 1962 220th Ave., Hays KS 67601 785-623-1701, & Nathan Staab 785-650-7519, email: vjspolledherefords@yahoo.com. Website: www.vjspolledherefords.com. From I-70 at Hays, go 5 mi. north on Hwy 183 and 2 1/2 west on Hopewell Rd. Cowherd: 320 registered influenced by: EFBeef Resolute CEO, TH 165B 206E Dividend 166G, VJS Virgil 6-10 JZ 2045H, VJS Full Throttle 1423B, TH 88A 8010 Endure 154H, VJS Liberty 1737E, VJS 719 Vertical 1848F, TH Masterplan 183F, VJS "CEO" Captain 1702E, Reed Revolve 617D ET, TH 13Y 358C Bottom line 206E, VJS Forefront 1840F, Frenzen Bar JZ Bruiser B30.

-W-

WAGNER HEREFORDS (D6) - The Kevin Wagner Family. PO Box 193, Satanta, KS 67870. Phone: Kevin: 620-649-7128, Kris: 620-649-7526. Website: wagnerherefords.com. email: kris@wagnerherefords.com. Ranch located 6 miles SW of Satanta on Hwy 56 to Seward County Road A, then South 1/4 mile. Cowherd: Line 1 Herefords, utilizing AI, ET and GE-EPD's. Breeding low maintenance, range efficient cattle, that carry performance for the commercial cowman. AI Sires: HH Advance 5019C, HH Advance 8008F, and CL 1 Domino 5110R. Selling Bulls Private Treaty.

WAITE, DWAIN & TERESA (D4)-7278 106 Road, Winfield, Ks. 67156. Owners: Dwaine & Theresa Waite 620-221-3199. Location from Winfield: 3 miles north, 3 west, 2 north, 1/2 east, 1/2 north & 1/4 east. Cow Herd: Our cowherd consists of 20 head, all originated at Bowling Ranch. Our senior herd sire was purchased from Bowling ranch and was just btwo weeks old when he came to us along side his mother. T110 is a son of the infamous CL 1 Domino 215Z and his calves come easy with much vigor and structurally correct. Visitors welcome any time

WALNUT GROVE FARMS (D2) - Owners: Mick & Bill Valek families 563 220 Rd, Agenda, Ks., 66930. Phone: Mick: 785-732-6637, 785-527-1049 (cell), Bill: 785-732-6566. email: djvalek@yahoo.com Located 8 miles south of Belleville on Hwy 81, 9 miles east on Hwy 148 and 3/4 mile north. Cowherd: 150 cows and first calf heifers.Herd Sires: Sons of 2012 and Trust. AI Sires: Maverick, UPS Sensation 2504, Legend, Houston, Churchill Desperado, Endure 173D, DCF Promote 824F, Durango, ILR Red Power 456B, and Big Jake. Visitors welcome.

WHITE OAK FARMS (O)- 5786 White Oak Road, Martelle, Iowa 52305. 319-389-3138. Owners: Nate & Jayme Kuehl and family. A herd of high quality, mostly Line One females. Cooper Influenced, Straight Horned Genetics, Enhanced Genomics w/o creep feed. Selling bulls and females private treaty.

WILDCAT HEREFORDS (D5) - 2684 Jade Rd., Durham, KS 67438. 620-341-3787. Dry weather only! From Junction of Hwy 15 and 270th go east 2 miles on 270th then go south 1 1/2 miles. We are on the east side of the road. Or go north of Durham on 15 to 290th, east 3 miles to blacktop, go south 2 miles turn on 270th and go west 1 mile then south 1/2 mile. AI Sires: DD No Limit, CJH Harland 408, UPS Domino 3027, and C-S Pure Gold, and my herd sire: CirS 3329A (A CI 1 Domino 860U son out of a B&D female). Visitors welcome.

WOOLFORD, DANA - See Wildcat Herefords

-X-

XIT RANCH (D6) - 32036 5 Rd. Plains, KS 67869. Owner: John & Lisa Adams. Phone: 620-621-4017. XIT Ranch is located 18 miles south of Plains, KS on the Cimarron River. Our Hereford cattle are primarily of Line 1 breeding. We have purchased bulls from the Van Newkirk's of Nebraska in 2019 and 2020. Come by and take a look at some exciting calves. We sell bulls and females private treaty at the ranch. We also have a band of broodmares and are merchandising top notch quarter horses as well. All stock raised with commercial ranches mind.



IT'S ABOUT TEAMWORK

"The Beef Checkoff is part of the beef community's team, and they are going to bat for us every day." Heather Donley, Kansas Beef Producer

Find out more by visiting
www.kansasbeef.org/beefhub

BEEF Powered in part by Beef Farmers and Ranchers

KANSAS BEEF 1988

BULL POWER @ Square G Ranch

In the seedstock business, bull power is the name of the game and Square G Ranch has you covered. Contact us for progeny, semen or for females carrying the service of these breed-leading sires we are fortunate enough to have walking our pastures.



B&C EL SENSATION 1207J

B&C El Jefe 7086E x B&C Ms Top Sensation 7110
Reserve Champion Horned Bull
2022 Fort Worth Stock Show and 2023 Cattlemen's Congress
Semen available

HARVIE EMBRACE ET 104J

MJW 79Z Z311 Endure 173D ET x Next Gen Riesling 295 ET
Offspring and Service available



SG KME 9106 JACE J68

H Lar Deberard 9106 ET x Delhawk Sweet Fire 6E ET
Champion Polled Bull
2022 Oklahoma and Kansas State Fairs and Oklahoma Red Dirt Rendezvous
Semen available

HARVIE OVHF ULTIMATE 220J

Haroldson's United 33D 36G x Harvie OVHF Ms Unique 164F
Offspring and Service available



BOYD 31Z BLUEPRINT 6153

R Leader 6964 x NJW 91H 100W Rita 31Z ET
One of the top bulls in the breed for registrations
Proven Calving Ease
Females carrying his service for sale

Private Treaty Bulls & Females Available--Call Today



Harold & Donna Gleason • Sam & Rhonda Eck • John & Kendra Jones • Nathan & Misty Koontz & Families
Thomas, OK • hgagency@yahoo.com • Harold: 580-661-1146 • Sam: 580-661-1145

Production Sale:
March 25th 2024 @ Noon



NEED LADIES?

we've got 'em



oleenbros.com • Dwight, KS

Arden: (785) 466-1422 • Jan: (785) 466-1421 • Jesse: (785) 499-3250 • Andrew: (785) 499-3636



**Fall Bred BWF, Angus
& Hereford Heifers**



**BWF, Angus & Hereford
Spring Pairs**



**Bulls with Performance,
NOT a large feed bill**

Visitors Always Welcome!

Hereford, Angus, & Balancer Seedstock Available



Stout 2 Year old Horned & Polled Hereford Bulls

Fancy Functional Pairs

Bred Heifers & Open Heifers

Annual Bull Sale

February 24, 2024

in conjunction with

JS Ranch Sale

Cottonwood Falls, Kansas



CATTLE CO. **Junction City, KS**

Cindy Brown (785) 761-8994

Jason & Lori Brown (785) 770-7469

Justin & Hannah Brown (785) 761-5884

www.jccattlecompany.com



MADER **MF** FARMS

EST. 1939

RANCH TO RAIL OPERATION PRACTICING MULTI-TRAIT SELECTION FOR OVER 80 YEARS.

Reg#	Home Raised Sires	CED	WW	MCW	REA	BMI	CHB
44119008	MF Healy Rewind 044H	2.5	72.0	109.0	0.7	409.0	133.0
44119010	MF Hasty Rewind 047H	-1.7	65.0	102.0	0.7	429.0	120.0
44173668	MF Mr. Hereford Journey 076H	5.5	54.0	93.0	0.7	439.0	139.0
44296631	MF Mr. Hereford Rewind 058J	-0.3	58.0	85.0	0.6	417.0	115.0
44296632	MF BJZ Genuine 056J	-1.1	58.0	101.0	0.5	332.0	113.0
	MF Sire Average	1.0	61.4	98.0	0.65	405.2	124.0
	Rank within Breed	Top 65%	Top 20%	Top 65%	Top 5%	Top 20%	Top 25%

- Replacement females for sale year around.
- Offering Calf Buyback Program for genetic customers.
- Always seeking quality Hereford or F1 feeder cattle.

MADERFARMS.COM

13432 N ROAD 100E | JENNINGS, KS 67643

Mader Farms Office 612-300-0286
Keith Bowie (Herdsman) 785-675-1198

Shane Bowie (Crops Mngr) 785-475-4404

Where is *your* breeding program going?

The road to profitability

is often a long one, so let our professional marketing staff put you on the fast track. We offer a full range of marketing and promotional services that will make a difference on your bottom line.

- Print advertising
- E-mail broadcasts
- Ring service
- Professional photography and design

Stephen Russell • (785) 458-2650
stephen@kla.org • www.kla.org



HEREFORD

BOWLING RANCH

RED ANGUS

STgenetics



BH Rugby ET



CE	BW	WW	YW	DMI	SC	SCF	MM	MG	MCE	MCW	UDDER	TEAT	CW	FAT	REA	MARB	BMI	BII	CHB
8.5	2.4	72	121	0.3	1.7	19.2	31	67	5.4	88	1.40	1.50	82	0.100	0.33	0.48	424	542	167
10%	40%	2%	1%	68%	3%	16%	24%	7%	12%	48%	5%	10%	10%	99%	69%	2%	8%	3%	2%

- BH RUGBY ET was the top selling bull in our 2023 Spring Bull Sale, selling to ST Genetics.
- Heavily pigmented & HOMOZYGOUS POLLED, Rugby is offers as unique of a package as you can find anywhere in the breed today. Of the 588 Genesis sons on record, Rugby is the LONE bull in the breed with his combination of YW & MARB with a minimum of 8 for Calving Ease.
- His donor dam was our pick in the 2018 Sandhill Farms Production Sale. She is the dam of SHF Deadbolt 001A D163 and has been an excellent producer for us.
- Rugby is a trait leader for multiple traits, including 12 traits ranking in the top 10% of the breed.
- Semen available through ST Genetics.

KCF BENNETT ENCORE Z311 ET
 NJW 79Z Z311 ENDURE 173D ET
 BW 91H 100W RITA 79Z ET
LOWEN GENESIS G16 ET
 MSU TCF REVOLUTION 4R
 LOEWEN 77 48 MISS 344N 4RB42ET
 PCR JACKLYN NIKOLE 344N

SHF WONDER M326 W18 ET
 SHF LIMELIGHT W18 Y83
 SHF PHOENIX P68 U21
SHF 30U Y83 A97
 SHF PROGRESS P20
 SHF 30U P20 W166
 SHF MISS M326 T44 ET

WWW.BOWLINGRANCH.COM
FACEBOOK.COM/BOWLINGRANCH1

Nancy Bowling (580) 362-5026 | Tim Stidham, Ranch Manager (405) 742-4553 | BowlingBarDRanch@gmail.com



The Koons... was recognized as 2012 Stockman of the Year on March 3 at the 2012 Stockman of the Year Awards in the Ball Room at the Grand Hyatt Hotel in Dallas, Texas. Also present are Dr. Mike Dyer, CEO, ASM Management Group, and Rick Pugh, CEO, Livestock & Meat Industry Council Inc. (LMI).

Koons named 2012 Stockman Of The Year

The Koons... was recognized as the 2012 Stockman of the Year on March 3 at the 2012 Stockman of the Year Awards in the Ball Room at the Grand Hyatt Hotel in Dallas, Texas. Also present are Dr. Mike Dyer, CEO, ASM Management Group, and Rick Pugh, CEO, Livestock & Meat Industry Council Inc. (LMI).

...has been very low margins and his cost breakdowns between insurance, LMI, security. "I've reduced all my living expenses just to be a rancher for living on what makes sense to him. For Koons, but being the best of the livestock industry and a good friend for all of us."

Koons graduated from Kansas State University with a bachelor's degree in Animal Sciences and graduated from the University of Missouri with a master's degree in Business Administration. He has been in the industry for over 20 years.

THE STOCK EXCHANGE

Strong Momentum Continues For U.S. Beef Exports, Pork Exports Trend Lower

Covering off a strong holiday performance in 2012, U.S. beef exports increased and had a January, according to data released by USDA and compiled by the U.S. Beef Export Promotional (USBEP). Pork exports continued to trend lower in January, despite another outstanding month for exports to leading market Mexico.

Cattle Producers Welcome Contract Library Pilot Program

WASHINGTON, DC - Recently, the Senate passed the Fiscal Year 2012 Omnibus Appropriations package. It includes a number of provisions that will benefit cattle producers. The bill also includes provisions that will benefit livestock and poultry producers. The bill also includes provisions that will benefit livestock and poultry producers. The bill also includes provisions that will benefit livestock and poultry producers.



There are several steps to developing a successful wintering program for your cow herd. The first is to select a breed that is well suited to the climate and the type of feed available.

Creative Feed Strategies For Wintering Cows Are Helpful But Costly

WATERLOO, ONT. - With hay in short supply, many producers are trying to avoid cattle herd liquidation this winter by finding creative feed alternatives. However, creative feed alternatives can be costly and may not be the best solution for all producers. It is best to find a balance between creative feed alternatives and traditional feed sources. It is best to find a balance between creative feed alternatives and traditional feed sources.

Producers can improve the feeding program by using a combination of feed sources. This can be done by using a combination of feed sources. This can be done by using a combination of feed sources.

Producers can also improve their feed program by using a combination of feed sources. This can be done by using a combination of feed sources. This can be done by using a combination of feed sources.

THE STOCK EXCHANGE

NCA Statement On New WOJUS Role

WASHINGTON, DC - Recently, the National Cattlemen's Beef Association (NCBA) issued the following statement on the release of the WOJUS report. The report is a study of the WOJUS report. The report is a study of the WOJUS report.

New Livestock Bid Management Handbook Available To Producers

STILLWATER, OK - In partnership with First AAM University, New Horizons Livestock Auctions has developed a new handbook for livestock producers. The handbook is a guide for livestock producers. The handbook is a guide for livestock producers.

Start The Year On The Right Foot With Your Cattle Record-Keeping System

STOCKTON, MO - As the year ends, the closing of the year is a busy time for many producers. It is a good time to review the year's performance. It is a good time to review the year's performance.

INDEX	
STOCK MARKET	40
COMING EVENTS	42
JUDG RANCH FEATURE	15-20
PURMEX EXCHANGE	42

CONTACT US WHEN PLANNING YOUR NEXT SALE

Print Advertising • Personalized E-Mail Blasts
E-Stock Exchange Newsletter • Marketing Consultation • Experienced Ringmen

THE STOCK EXCHANGE

Guy Peverley • (785) 456-4390 • guypeverley@gmail.com
 Jeffrey S. Hallowell, editor • (405) 840-3915 • stockexchange@coxinet.net
 Teresa Peverley, bookkeeping • (785) 456-4428 • teresapeverley@gmail.com
 www.tsenews.net • Follow us on Facebook.com/thestockexchange

Helping Ranchers Ranch

Oklahoma's Oldest Annual Sale

Saturday, February 3, 2024



HH Advance 9293G (DLF,HYF,IEF,MSUDF,MDF)

BW	WW	YW	SC	MM	REA	MARB	CHBS
1.7	75	115	0.8	31	0.55	0.26	145



CL 1 Domino 136J 1ET (DLF,HYF,IEF,MSUDF)

BW	WW	YW	SC	MM	REA	MARB	CHBS
2.5	63	102	1.5	30	0.30	0.46	158



HH Advance 6226D ET (CHB)(DLF,HYF,IEF,MSUDF)

BW	WW	YW	SC	MM	REA	MARB	CHBS
2.1	51	81	1.4	31	0.14	0.41	147

63rd Annual Production Sale



**Selling 150 Hereford & Angus Bulls
and 60 Hereford & Angus Pairs**

This sale will be broadcast live on the internet.

This sale will be broadcast live on the internet.

DVAuction
Broadcasting Real-Time Auctions
Real time bidding & proxy bidding available.

BROADCASTING REAL TIME AUCTIONS

One time bidding and proxy bidding available.

**For semen inquiries on herd bulls
contact Messner Herefords.**

Other Herd Sires:	BW	WW	YW	SC	MM	REA	MARB	CHBS
HH Advance 2267Z ET	1.5	59	91	1.3	32	0.59	0.03	126
HH Advance 6223D	2.6	55	87	1.9	34	0.41	0.13	125
CL 1 Domino 7151E 1ET	3.1	61	102	1.2	28	0.48	0.01	114
CL 1 Domino 8165F 1ET	3.4	66	96	1.5	38	0.23	0.08	105
CL 1 Domino 7103E 1ET	2.4	60	97	1.0	34	0.44	0.08	123
M 2267 Domino 5165	2.9	60	102	1.1	26	0.65	-0.07	122

For more information, please contact us:

MESSNER RANCH

Sale location:

163728 EW 28 Rd., Laverne, OK 73848

Van 580-552-1555 • Milton 580-273-9494

vanmessner@gmail.com

Siring the Next Generation of On Target Bulls



SHF HOUSTON D287 H086
Reg. # 44123641



BIRDWELL WALL STREET 0588ET
Reg. #44255506

ON TARGET BULL SALE

HEREFORD • ANGUS
March 16, 2024

Our 2024 offering will include bulls and females sired by Houston, Wall Street, Defiance, Long Haul, Perfecto, Leader 182F and KCF Trust B279.

Visit our website for more details about the sale, private treaty offerings and to check out our exciting Herd Sires — Houston & Wall Street.

SPRINGHILL HEREFORDS



Home of the Round Barn

SPRINGHILL HEREFORDS

Dave & Delores Stump • Dan & Kim Schmidt
Jarrod & Jami Gillig • John & Angie Denton
1128 Hwy 9 • Blue Rapids, KS 66411

Dave Cell: 785-556-0124

Dan Cell: 785-562-6685

info@springhillherefords.com

Follow us on Facebook



SpringhillHerefords.com

THE BARN DOOR IS ALWAYS OPEN



**BULLS AND FEMALES FOR SALE
PRIVATE TREATY AT THE RANCH**

Deewall Family

Mike

1074 Hwy. 1
Mike & Jane Deewall
620-635-6511



Herefords

Coldwater, KS 67029
www.deewallherefords.com
620-635-5978



AHA# 43966479

Hills- Galore 44Z Rewind 147E

Semen Available

This fall, we will be offering another outstanding set of Rewind Sons.....
.....and bred heifers like these.



Est. 1868



Like Us on Facebook



Gold Breeder since 2005



Member PTP Alliance

FRANK HUG & SONS

2556 W 125th Street

Scranton, KS 66537

Bob & Tisha 785-230-0434

Ed & Gretta 785-230-7597

rdhug@msn.com

fhug.sons@gmail.com

Registered Herefords Since 1896

frankhugandsons.com

Bulls and commercial females offered at private treaty.

An Elite New Herd Sire....



HH ADVANCE 1325 1ET

44304217

SIRE: HH ADVANCE 883F 1ET

We were able to purchase 1325 in the Holden Herefords Sale this spring and are very pleased with our purchase. He is a fully pigmented, big nuted, high performance sire. He could have very easily started the sale according to Jack. His dam, 7231E is one of the highly proven cows at Holden's that we think a lot of. These genetics will match up very well with our 5019C and 8008 daughters that are coming into production now. Come by and see for yourself.



HH Miss Advance 7231E



HH ADVANCE 5019C

Semen and
Progeny Available
on these
Proven Sires



HH ADVANCE 8008F

CE	-0.3
BW	3.7
WW	67
YW	115
DMI	0.7
SC	1.8
SCF	19.4
MM	38
M&G	71
MCE	3.5
MCW	118
UDDR	1.20
TEAT	1.40
CW	88
FAT	0.091
REA	0.34
MARB	0.37
BMI\$	348
BII\$	419
CHB\$	115

Success breeds Success

93 years of continuous Registered Hereford breeding!

JONES HEREFORD FARM

3224 Nail Road

Abilene, Kansas 67410

785-461-5607 or 785-223-3043

dcjones@twinvalley.net

INSPIRED BY TRADITION, DRIVEN FOR THE FUTURE.



GS

FEMALES AVAILABLE EVERY FALL

BULLS AVAILABLE EVERY SPRING

GRIMMEL SCHAAKE
CATTLE COMPANY

LOCATION: 7634 LAKE ELBO ROAD • MANHATTAN, KANSAS

MAILING ADDRESS: 9969 ROSEMARY LANE • MANHATTAN, KANSAS

MELISSA GRIMMEL SCHAAKE 443.417.4842 • SHANE SCHAAKE 785.456.5014 • GRIMMELSCHAAKE@OUTLOOK.COM

WWW.GRIMMELSCHAAKECATTLE.COM

FOLLOW US ON FACEBOOK + INSTAGRAM



Where Trust is Built
with Consistency.

-DAVIS HEREFORDS-

Sires Represented

C BAR 1 Bailee Valor 9354 ET - BW: 4.0 WW: 65 YW: 116 M 23
KJ 555 Leader 117F - BW: 2.0 WW: 63 YW: 85 M: 28

AI Sires used in 2023

Churchill Kingdom 128J - BW: .07 WW: 61 YW: 92 M: 34
BG LCC 11B Perfecto 84F - BW: -.6 WW: 67 YW: 106 M: 38

Our cowherd consists of these breed leading sires

H Full Throttle 5073	DD Solution 306
NJW 84B 10W Journey 53 D	H FHF Advance 628
K Rustic 711	HCC Arapaho 6073

DAVIS HEREFORDS

Dean & Marlene Phone: 785-256-4643
29111 Keene Rd Maple Hill, KS 66507
Danny, Amanda, Jalyn, Danica, & Brinley
785-256-4010 Danny's Cell: 785-383-2493

Tyler, Sarah, Tyce, Maddyn, and Oakley Cowan

Keene-Eskridge exit (342) 13 miles west of Topeka on I-70 then 3 miles south

Raising Registered
Herefords
for Over 50 Years



JAMISON HEREFORDS

SINCE 1944...80 YEARS OF HERFORD PERFORMANCE AND LEADERSHIP!



SPRING BULL SALE
FEBRUARY 23, 2024
SELLING 100 2-YEAR-OLD BULLS



QUARTER HORSE SALE
OCTOBER 5, 2023, Noon
Preview October 4, 2023



CL 1 DOMINO 386A 1ET

CL 1 DOMINO 1108Y 1ET x CL 1 DOMINO 9126J 1ET
CED 1.1 BW 1.3 WW 55 YW 81 Milk 33 M&G 61
UDDR 1.4 TEAT 1.5 REA .54 MRB .29 CHB\$ 125
Superb daughters...5-trait EPD leader...Carcass Value!



CL 1 DOMINO 6163D

CL 1 DOMINO 215Z x CL 1 DOMINO 7110T
CED 1.1 BW 1.4 WW 59 YW 82 Milk 37 M&G 66
UDDR 1.4 TEAT 1.4 REA .33 MRB .19 CHB\$ 133
Herd Builder...10-trait EPD leader...Cowherd to Carcass!



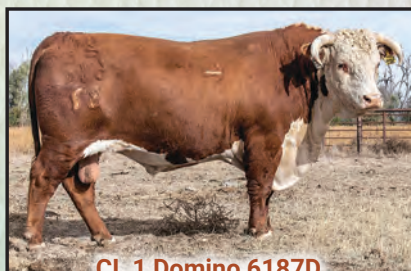
JA L1 DOMINO 6212D

HH Advance 4082B x HH Advance 1098Y
CED 5.9 BW 2.2 WW 54 YW 88 Milk 35 M&G 62
CEM 5.5 UDDR 1.3 TEAT 1.3 REA .21 MRB -.03
JA L1 Performance...Maternal, Pigmented, Balanced!



HH Advance 5322C ET

HH Advance 1045L x HH Advance 7034T
CED 4.5 BW 1.6 WW 61 YW 95 Milk 23 M&G 53
UDDR 1.4 TEAT 1.5 REA .62 MRB .19 CHB\$ 112
Complete, Powerful... Curve Bender & Grid Value.
HH 5139R Cow line!



CL 1 Domino 6187D

HH Advance 4067B x CL 1 Domino 215Z
CED 3.8 BW 1.4 WW 69 YW 109 Milk 38 M&G 73
CEM 9.1 REA .44 MRB .47 CHB\$ 145
9-Trait EPD Leader! Performance, Maternal, CHB Value!

GORDON JAMISON 785/299-0441

2271 COUNTY RD. 74, QUINTER, KS

www.jamisonranch.com



One of our Bonsma-type Females Fertile, Functional, and Efficient

We are using females like her and superior maternal herd bulls to produce progeny for the Registered and Commercial Industry.

A select set of heifers and bulls are for sale yearly.

Swenson Herefords

**Kevin Swenson and Denise Swenson
1811 Union Road, Concordia, KS 66901**

Kevin: 785-213-2322

Denise: 785-614-4454

dswen1811@yahoo.com

DOUBLE J HEREFORDS

LL



LL

LINE ONE GENETICS

**Bulls and Yearling Replacement Heifers for
Sale at Private Treaty**

Ken & Tina Johnson

381 E Limestone Rd
Phillipsburg, KS
785-543-5526 (Home)
785-543-8096 (Cell)

Brock & Allysha Johnson

Bentley, L. T, Jhett
Brenner & Blayne
785-543-2841 (Home)
785-543-8095 (Cell)

brockdoublejherefords@gmail.com



Home of 25 CHB Sires
of Distinction in 2023



Home of 7 Sires of
Distinction in 2023



Home of 84 Dams of
Distinction in 2023

NEW SIRES IN SERVICE FOR 2023

MM GERBER 43A F113 J 345 {DLF,HVF,IEF,MSUDF}

CE	BW	WW	YW	DMI	SC	SCF	MM	M&G	MCE
4.9	2.0	80	130	1.0	0.8	11.6	25	65	4.8
MCW	UDDR	TEAT	CW	FAT	REA	MARB	BMI\$	BIIS	CHBS
129	1.10	1.10	98	0.031	1.07	0.29	328	430	167



EF BEEF D876 F255 J 554 {DLF,HVF,IEF,MSUDF}

CE	BW	WW	YW	DMI	SC	SCF	MM	M&G	MCE
10.6	-0.7	59	91	-0.1	1.1	21.2	30	59	6.4
MCW	UDDR	TEAT	CW	FAT	REA	MARB	BMI\$	BIIS	CHBS
75	1.30	1.20	79	0.031	0.62	0.55	471	578	180



SCHU-LAR JS 64J OF 43F 16C {DLF,HVF,IEF,MSUDF}

CE	BW	WW	YW	DMI	SC	SCF	MM	M&G	MCE
11.0	1.0	57	84	0.2	1.0	19.1	19	47	3.7
MCW	UDDR	TEAT	CW	FAT	REA	MARB	BMI\$	BIIS	CHBS
88	1.40	1.40	71	0.081	0.60	0.33	405	495	135



GERBER KUDOS K10 {DLF,HVF,IEF,MSUDF}

CE	BW	WW	YW	DMI	SC	SCF	MM	M&G	MCE
1.6	3.9	75	113	0.6	1.2	10.6	17	54	3.7
MCW	UDDR	TEAT	CW	FAT	REA	MARB	BMI\$	BIIS	CHBS
122	1.30	1.20	81	0.001	0.62	0.47	304	413	163



- Proven Genetics
- Comprehensive Trait Measurement
- Continuous Improvement

RFI evaluation of all replacement females since 2006, testing over 300 yearly
Complete feedlot and carcass data on all sires

MM RANCH POLLED HEREFORDS

P.O. Box 2, Chanute, KS 66720
Alex and Alison Mih • 620-431-3917 • cell 620-212-3250 • Mariam Mih (1926-2022)
amih@mmherefords.com
www.mmherefords.com



THE FALL Classic



20 **B&D** 23

Herefords and Angus
NOV : 21



CL 1

Domino

2172K

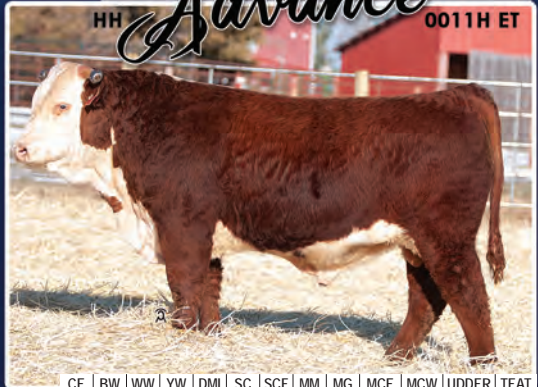
CE	BW	WW	YW	DMI	SC	SCF	MM	MG	MCE	MCW	UDDER	TEAT
1.2	3.7	79	130	0.8	1.8	16.6	37	76	4.6	116	1.40	1.50
65%	71%	1%	1%	98%	2%	41%	4%	1%	19%	95%	6%	3%

CW	FAT	REA	MARB	BMI	BII	CHB
105	0.050	0.50	0.29	397	505	170
1%	85%	33%	11%	17%	9%	2%

- CL 1 DOMINO 776E 1ET
- CL 1 DOMINO 001H**
- CL 1 DOMINETTE 8150F
- CL 1 DOMINO 710E 1ET
- CL 1 DOMINETTE 016H 1ET**
- CL 1 DOMINETTE 3175A

- Our newest herd sire, 2172K was our pick in the 2023 Cooper Hereford Ranch Sale, selling for \$40,000. He was the #1 bull in the sale for both WW & YW.
- Out of a first calf heifer, he ratioed 103 for WW and 109 for YW. His dam scanned 104 for REA and 109 for IMF.
- In addition to being in the top 1% of the breed for his growth, 2172K ranks in the top 6% of the breed for 7 other traits. Matched with his superior Marbling, this power bull is designed for growth, maternal and superior carcass quality.

- 0011H is proving to be a rockstar breeding bull with the results of his first progeny among the breed's best. His first 8 sons averaged \$23,500 in the '23 Holden Herefords Bull Sale. He's already posted impressive progeny ratios of 46@98 for BW, 25@104 for WW, 17@106 for YW and 13@106 for IMF.
- His impressive donor dam was among the top selling females in the 2022 Holden Herefords Fall Female Sale. She has produced multiple herd sires for Holden, as well as donor daughters. She has posted a progeny IMF ratio of 19@107.
- 0011H offers an excellent EPD profile with an excellent spread from CE to Growth, awesome UDDER & TEAT numbers and elite Marbling.
- Several strong aged sons sell in our Fall Classic Sale this November



HH

Advance

0011H ET

CE	BW	WW	YW	DMI	SC	SCF	MM	MG	MCE	MCW	UDDER	TEAT
6.7	1.4	65	96	1.3	1.4	14.6	31	63	9.4	61	1.40	1.50
18%	20%	14%	30%	99%	12%	66%	24%	15%	1%	6%	6%	3%

CW	FAT	REA	MARB	BMI	BII	CHB
77	-0.010	0.13	0.44	315	418	130
20%	7%	95%	3%	72%	49%	23%

- HH ADVANCE 3006A
- HH ADVANCE 8008F**
- HH MISS ADVANCE 6053D ET
- HH ADVANCE 8203U ET
- HH MISS ADVANCE 2178Z**
- HH MISS ADVANCE 9119W