

The Largest Privately Owned Hereford Newspaper in North America

The one that's read "from cover to cover." • Visit us on the web at: www.herefordamerica.com

Serving Commercial Cattlemen & Registered Hereford Breeders

Published by: Hereford America, Inc. • 13823 Beaver Creek Place • Reva, SD 57651

February 2019

Vol. 22, No. 5

Editorial Comments...

Jill Bayers Hotchkiss



Jill Hotchkiss

It's been a crazy start to winter. Erratic weather, fluctuating cattle prices and many people getting ready for bull sales has made for a busy few months for us here.

I took a quick trip to Denver for the National Western Stock Show. It's an amazing place with lots of moving parts, literally. This was the 113th National Western Stock Show. I especially wanted to go this year because after this year's show is over, they will begin a \$1 billion renovation of the Yards and facilities in the stock show complex. When it is completed in about four years, it will be an incredible facility. I inquired about the materials from the old Yards and was told they would be incorporated into some of the new design. In a way it is sad to see some of the historical facilities go by the wayside but the history is still there. The new buildings and pens will be far more efficient and comfortable. It will be interesting to see the finished facility.

I was impressed with the quality of cattle in Denver this year, especially the bull show. There was an incredible line-up in both the horned and polled shows with large crowds in attendance. The championship drives were very impressive as the top animals from each division paraded through the ring. The bull championships are especially that way when you get a ring full of the best bulls in the breed. It certainly makes one proud to be a Hereford

(continued on page 8)

National Western Stock Show Champion Hereford Bulls

January 17, 2019 • Denver, CO • Judges: Charlie and Blake Boyd



Grand and Supreme Champion Horned Hereford Bull was BR Belle Air 6011, a Feb. 3, 2016 son of Bar S LHF 028 240 and out of BR Belle 4082 ET, a Golden Oak Outcross dam. He is owned by Barber Ranch of Channing, TX; Colyer Herefords, Bruneau, ID; Bill King, Moriarty, NM; and Rylee Barber, Channing, TX.



Grand Champion Polled Hereford Bull was H DeBerard 7454 ET a March 14, 2017 son of UPS Sensation 2296ET and out of RST GAT NST Y79D LADY 54B ET, a daughter of WORR OWEN Tanqueray Y79D. He is owned by Hoffman Ranch of Thedford, NE; Express Ranches, Yukon, OK; Ward Ranch, Edmond, OK; and Williams Hilltop Farms, Rushford, MN.



Reserve Champion Horned Hereford Bull was EXR Bankroll 8130 ET a Jan. 18, 2018 son of BR Belle Air 6011 and out of EXR Lexus 4208 ET, a daughter of LSW WCC About Time X06. He is owned by Express Ranches, Yukon, OK.



Reserve Champion Polled Hereford Bull was KJ BJ Landmark 210F ET sired by KJ BJ 319X Laramie 619D ET and out of KJ 618N Timewise 236X. He was bred by Brady Jensen and exhibited by Jensen Bros. of Courtland, KS.

(continued on page 40)

Advertisers Index

Ade Polled Herefords	35	Kreth Herefords	9
Amdahl-Baker	26	L Bar W	17
Bar JZ Ranches	56	McIver's Happy Acres	36
Braun Ranch	27	Melcher Herefords	36
Carmichael Herefords	6-7	Midway Polled Herefords	26
Colyer Herefords	11	Mrnak Herefords	19
Cooper Herefords	13	Olson's Red Power Sale	34
Durbin Creek	18	Rausch Herefords	3
Ehlke Herefords	4	Ravine Creek Ranch	23
Engelhaupt Herefords	30	S&S Polled Herefords	33
Fawcett's Elm Creek Ranch	25	Sidwell Land and Cattle	26
Feddes Herefords	5	Snowshoe Cattle Co.	30
Fisher, Lowell and Family	10	The Livestock Link	46
Fort Keogh	12	Tegtmeier Polled Herefords	41
Friedt Herefords	4	Thorson Herefords	32
Gant Polled Herefords and Angus	8	Thorstenson Herefords	22
Greater Omaha	37	Tricky's Herefords	44
Harrell Herefords	38-39	Ulrich Herefords	20
Hereford America	45	Vin-Mar	43
Hoffman Herefords	28-29	Wagner Herefords	24
Holden Herefords	14-15	Ward, Ned and Jan	21
Jamison Herefords	31	Watertown Winter Farm Show	5
Jensen Bros.	16		



Sales & Events CALENDAR

January

26	Melcher Herefords Bull Sale Page, NE	4	Pelton Polled Herefords Sale Halliday, ND
28	Delaney Herefords & Atkins Herefords Annual Sale Lake Benton, MN	5	Watertown Winter Farm Show, Hereford Show & Sale Watertown, SD
30	Black Hills Stock Show Hereford Show and Sale Rapid City, SD	7	River Run Elite Hereford Sale Mobridge, SD
31	Ridder Herefords Sale Callaway, NE	8	Stroh Hereford Ranch Sale Killdeer, ND
		9	Topp Herefords Sale Grace City, ND

February

1	Dvorak Herefords Bull Sale Lake Andes, SD	10	Baker-Amdahl Hereford and Angus Bull Sale Rapid City, SD
1	Baumgarten Cattle Co. Bull Sale Belfield, ND	11	Mrnak Herefords Bull Sale Bowman, ND
1	Elkington Polled Herefords Bull Sale Idaho Falls, ID	11	BB Cattle Co. Bull Sale Connell, WA
2	Hillsview Farms Private Treaty Bull Sale Eureka, SD	11	Logterman Family Hereford Bull Sale Valentine, NE
2	Upstream Ranch Annual Production Sale Taylor, NE	12	Fawcett's Elm Creek Ranch Bull Sale Ree Heights, SD
			Thorson Herefords Bull Sale Philip, SD

(continued on page 4)

Subscribe Now! DON'T MISS AN ISSUE!

Canadian & Foreign subscriptions — \$30 U.S. funds, one year
\$55 U.S. funds, two years

U.S. subscriptions —
\$20 - one year, third class \$35 - two years, third class
\$30 - one year, first class \$55 - two years 1st class

(Advertisers placing \$150 or more in advertising for the season will receive a free first class subscription.)

Please let us know if we need to **correct** your address or if your local post office has started using "911 Locator" addresses.

Note: When submitting an address we need to have 3 lines including a PO Box, Route or Street for the second line. Thanks!

Send new or corrected address to:

Hereford America
13823 Beaver Creek Place
Reva, SD 57651

Credit Card Payments
You may pay your subscription or advertising bill online by credit card through our website or by calling us with your credit card information.

Your subscription expiration date is printed above your name on the front page label area. If you wish to receive your paper in a more timely manner or live in a southern state please consider a first class

subscription for faster postal delivery.
For questions call Marc Hotchkiss at 605/866-4495.
If your address changes please be sure to notify us.

Name _____

Address _____

City _____

State _____ Zip _____

Phone _____ E-mail _____

____ Commercial Breeder ____ Registered Hereford Breeder ____ Polled
____ Registered Breeder, Other Breed ____ Other _____ ____ Horned
____ Both _____

Signature _____ February 2019

(Required for Post Office Regulations)

The official Hereford publication for the states of
South Dakota, North Dakota, Wyoming & Minnesota.

HEREFORD AMERICA

605/866-4495

WWW.HEREFORDAMERICA.COM

13823 Beaver Creek Place
Reva, SD 57651

PUBLISHED 7 TIMES A YEAR: SEPTEMBER-APRIL/MAY

(April/May and Nov/Dec are combined issues)

by Hereford America, Inc., a family owned & operated business.
Jill and Marc Hotchkiss

Jill Hotchkiss - jbh@herefordamerica.com • Cell: 605/490-1409
Marc Hotchkiss - marc@herefordamerica.com • Cell: 605/490-1513
— In Memory of Byron Bayers —

Editor: Jill Hotchkiss
Ad Design/ Production: Robin Engel, Jill Hotchkiss
Writers: Jill Hotchkiss, B. Lynn Gordon, Terra Seyler, Tom Granzow
Editorial Assistant: Taylor Vroman
Proofreaders: June Hotchkiss, Taylor Vroman
Website Development: Robin Engel, Taylor Vroman, Jared Peterson
Coordinator: Jill Hotchkiss

Opinions expressed by our editors, columnists, letters to the editor or other writers or news sources are not necessarily those of the management. We welcome your comments, ideas, suggestions and letters to the editor. All correspondence (including e-mails) must be signed or must clearly identify the name of the author. Hereford America shall not be liable for slight changes or typographical errors that lessen the value of an advertisement. Hereford America's liability for errors or omissions in connection with an advertisement is strictly limited to publication of the advertisement in any subsequent issue or the refund of any monies paid for the advertisement. Advertising placed after deadline must be approved by the Editors. All materials for such advertising must be in by date specified by Editor. Late charges may apply. If an ad is placed and all materials are not received by date needed all attempts will be made to compile the ad from available materials. Any cancellations after deadline are subject to full charges for the ad. Hereford America reserves the right to refuse advertising to anyone. All contents Copyright 2018 by Hereford America, Inc., except Trademarks and Copyrights otherwise noted in which Hereford America, Inc. disclaims any proprietary interest.

150 Performance Bulls and 250 Replacement Heifers sell Presidents Day • Mon., February. 18, 2019

at the farm • Hoven, SD • 1:00 PM CST

**61st
ANNUAL**

150 Bulls • 100 top end Two-year-old bulls & 50 top end Yearling bulls
250 Heifers • 30 Registered heifers from the top end of replacement pen &
• 220 Registerable Replacement heifers

Every bull indexed for best use on Black and Red Cows. Every bull indexed for calving ease.

Anodize bulls are among the new bloodlines offered this year.

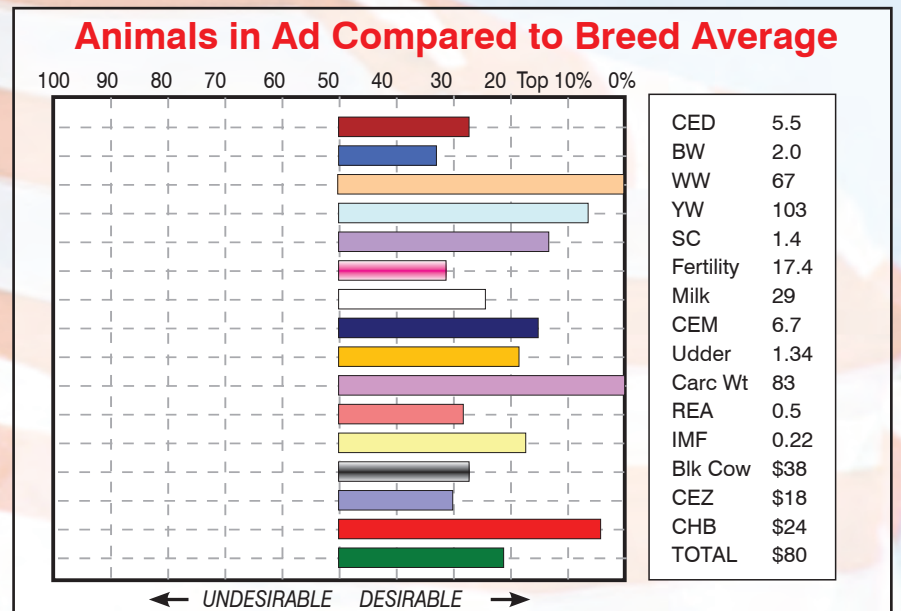
Rausch Sire Evaluation Offering — Yearling Bulls —



Lot 17 - R New York 4168
RN: 43927391
Sire/MGS: SHF York Y02/R Revolution 4510



Lot 20 - R On Target 4728
RN: 43927462
Sire/MGS: On Target 936/R Revolution 4510



— Two-Year-Old Bulls —



Lot 56 - R ENCORE 4227
RN: 43814432
Sire/MGS: R Leader 6964/SHF York Y02



Lot 57 - R On Target 7237
RN: 43814736
Sire/MGS: On Target 936/R Revolution 2767



Lot 64 - R Bonanza 5667
RN: 43814577
Sire/MGS: R Bonanza 4164/Churchill A1



Lot 66 - R Spartan 5147
RN: 43814524
Sire/MGS: UPS Spartan 2864/SHF York Y02

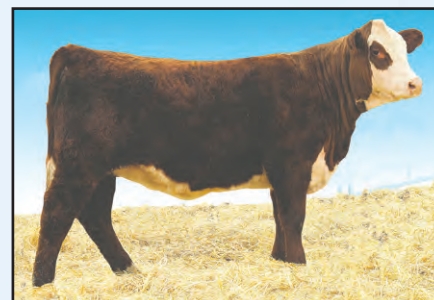
— Heifers —



Lot 152 - R Miss New York 088
RN: 43927053
Sire/MGS: SHF York Y02/UPS Spartan 2864



Lot 153 - R Miss On Target 148
RN: 43927110
Sire/MGS: On Target 936/SHF Vision R117



Lot 155 - R Miss Anodize 268
RN: 43927255
Sire/MGS: Gerber Anodyne 001A/R New York 4243



Lot 163 - R Miss Revolution 318
RN: 43927312
Sire/MGS: R Revolution 4510/R 2nd Revolution 2767

Online bidding at:
The Livestock Link
Register early!
www.TheLivestockLink.com

Online bidding at:
DVAuction
Broadcasting Real-Time Auctions
www.DVAuction.com

Videos of sale lots online at RauschHerefords.com

Please call, write or e-mail for more information:

RauschHerefords.com

14831 Hereford Road • Hoven, SD 57450

(605) 948-2146 or 2157 or 2375

Jerry

Shannon

Vern & Joel

E-mail: rauschherf@rauschherefords.com

Located 2 miles west of Hoven on Hwy. 20 and 47



38th Anniversary



Over 850+ Rausch dams have qualified!
America's No. 1 Dams of distinction herd.
(Based on efficiency)



1 p.m., Stockmen's West,
Dickinson, ND

**Sires represented: H5 9131 Domino 2185 • H5 9131 Yankee 156
H5 1147 Advance 417 • FH Navarro 242 MD • CL 1 Domino 215Z
SR Score 53A • HH Advance 6199D • NIW 73S W18 Hometown 10Y**



FH 53A SCOPE 801 - HE SELLS!
Standout Scope 53A son. Length, thickness & style. Donor mother 118.

The Livestock Link



For more information
or a catalog contact:
Gary, Kirsten and Aaron Friedt
701-824-2300 • 701-290-7231 (Gary)
701-590-9597 (Aaron)
gfriedt@hotmail.com
Megan and Dusty Dukart
701-290-7230 (Megan)
Lindsey and Drew Courtney
www.friedtherefords.com



FH L1 DOMINETTE 805 AF - SHE SELLS!
*This 2185 daughter will make an awesome brood cow.
 Her great grandam, 104, has left her mark in our herd.*

Production Sale
Guide Rock, NE
Calgary Bull Sale
Calgary, Alberta
Jensen Bros. Bull Sale
Courtland, KS
L Bar W Bull Sale
Absarokee, MT
Ft. Keogh Bull Sale
Miles City, MT
I-29 Bull Run
Sioux Falls, SD
Tricky's Herefords Bull Sale
Madison, SD
Tegtmeier Polled Herefords
Bull Sale
Burchard, NE
Holden Herefords Bull Sale
Valier, MT
Cooper Herefords Bull Sale
Willow Creek, MT

Call or email for
more information!


- 18 B&D Herefords Bull Sale
Claflin, KS
- 23 Sandhill Farms Bull Sale
Haviland, KS
- 23 Candy Meadow Farms
Bull Sale
Lexington, TN
- 25 Oleen Bros. Sale
Dwight, KS
- 26 Frenzen Polled Herefords
Bull Sale
Fullerton, NE
- 27 Ned and Jan Ward Sale
Sheridan, WY
- 30 Ernst Herefords Sale
Shamrock Livestock
O'Niell, NE
- 30 Sidwell Ranch Production Sale
Columbus, MT
- 30 DaKitch Farms Bull Sale
Ada, MN

April

- 12 Bartling Herefords Bull Sale
Burke, SD
- 13 StarMak Cattle Co.
Open House/Video Auction
Tea, SD
- 13 Knoll Crest Farms Bull Sale
Red House, VA
- 13 Thorstenson Herefords Sale
Selby, SD
- 14 Sandrock Ranch Sale
Benton, WI
- 19 Morgan Ranch Bull Sale
Burwell, NE
- 20 Stuber Ranch Production Sale
Bowman, ND

ADS for the MARCH issue
of Hereford America
have to be in the office
by Feb. 5.

E-mail Jill Hotchkiss at
jbh@herefordamerica.com



South Dakota Hereford Association Show & Sale

at Watertown Winter Farm Show
Watertown Extension Bldg., Watertown, SD

Tuesday, Feb. 5, 2019

Selling 29 BULLS

20 Yearling Bulls, 2 Fall Bulls, 7 Two-Year-Old Bulls & 5 Heifers

Hereford Show immediately following 9 a.m. Angus Show **Sale: 1:00 p.m.**
Or immediately following Angus Sale.

Live Auctions.TV

You're invited...


Consignors and Guests are invited to a get-together on
Monday, Feb. 4 at the Ramkota. Cattlemen's Social at 6:30 p.m.

Consignors:


Dandy Acres
Jordon Dockter
Fawcetts Elm Creek Ranch
J & J Hanson
Hansmeier
Hanson Hfds.
Klages Herefords
Laible
May
Jeff & Rebecca Mikel
Rainbow
Schmidt Herefords
TSR Cattle Co.
TL Herefords, Tyler Lacek
Twisted M
Weeping Fox

507/820-0803 • 507/215-1114 • Lot 20
605/949-1401 • 605/949-1401 • Lot 15
605/870-0161 • Lot 28
507/877-3631 • 507/877-3631 • Lot 33
605/492-3611 • Lots 6, 23, 35
605/382-5818 • 605/382-7477 • Lots 2, 7, 8, 11
320/273-2163 • 605/880-0521 • Lots 13, 17, 21
605/579-0148 • Lots 5, 16, 32
507/339-8248 • Lot 14
605/228-9800 • Lots 3, 4, 9, 31
605/661-3421 • Lot 29
507/825-2383 • 507/825-2583 • Lots 30, 34
605/690-0100 • 605/690-0100 • Lot 19
507/223-7867 • 507/476-0428 • Lots 22, 26, 27
605/951-1165 • Lots 12, 24
712/933-2720 • Lots 1, 10, 18

For Catalog or More Information Contact Sale Committee:



Frank Redlin, 605/881-2479
Jeff Klages, 605/880-0521



Catalog also online at: www.SouthDakotaHerefords.org

Easy Calving ♦ Easy Fleshing



F Test Pilot 737 (Homozygous polled) by X651
Superb! Used in our herd. Selling possession after June 15.



F Warrior 836 (polled) by Warrior 845C
Stout, fancy, muscular heavyweight. Nursing ratio 116.



F Hometown 847 (polled) by 10Y

For Sale Privately
25 Bulls ♦ 10 Heifers
Horned and Polled

Feddes Herefords

Tim 406.570.4771 Dan 406.570.1602
tfeddes@msn.com drfeddes@msn.com
2009 Churchill Road Manhattan, MT 59741
Our sale is any time you want. All our cattle sell privately.
See more bulls for sale at:

www.feddes.com



F Anodyne 818 (polled) by 001A

For 5 generations, Herefords have been synonymous with the Carmichael name

Herd Sire



Semen for sale

HH ADVANCE 2008Z ET — 10-TRAIT EPD LEADER

BW 0.4 WW 61 YW 98 M 32 M&G 62 CHB \$109

Trait leader in CED, BW, SC, Milk, M&G, CEM, Teat Size, Fat, Marbling and CHB!

Herd Sire



CL 1 DOMINO 420B 1ET

BW 2.3 WW 66 YW 105 M 17 M&G 50 CHB \$118

Cooper's top-seller in 2015 Sale.

Owned with Cooper Herefords and Holden Herefords.

Sired Holden's top selling bull in 2017.



BW 3.6
WW 56
YW 90
Milk 22
M&G 50
CHB\$ 105

Lot 17 — KC L1 DOMINO 18082 (43971308)

4/2/18 by CL 1 DOMINO 420B 1ET • BW 95 • WW 634



BW 1.5
WW 60
YW 94
Milk 24
M&G 54
CHB\$ 116

Lot 3 — KC L1 DOMINO 18011 (43971173)

3/18/18 by CL 1 DOMINO 420B 1ET • BW 84 • WW 712



BW 2.6
WW 54
YW 84
Milk 26
M&G 53
CHB\$ 102

Lot 5 — KC MR FRECKLES 18031 (43973312)

3/23/18 by KC MR FRECKLES 16059 • BW 85 • WW 669



BW 0.9
WW 59
YW 93
Milk 22
M&G 51
CHB\$ 108

Lot 13 — KC L1 DOMINO 18065 (43971297)

3/30/18 by CL 1 DOMINO 420B 1ET • BW 83 • WW 653

Watch and Bid online at
www.TheLivestockLink.com

The Livestock LinkTM
Livestreaming at
www.TheLivestockLink.com

Be sure to register early if bidding online.

EPDs 1/11/19

50th Annual Proven Genetics Sale
SAT., FEB. 16, 2019
at the ranch • Meadow, SD • 1 p.m.
60 Coming Two-Year-Olds • 17 Yearlings

Carmichael Herefords

14111 SD Hwy 73, Meadow, SD 57644

Keith Carmichael
Home: (605) 788-2962
Cell: (605) 490-7659

Bryan Carmichael
Cell: (605) 490-8685
Brice Carmichael
Cell: (605) 490-7596

www.carmichaelherefords.com Find us on Facebook



50th Annual Sale • February 16, 2019 • Meadow, SD



BW 5.3
WW 61
YW 89
Milk 20
M&G 50
CHB\$ 99

Lot 24 — JC L1 DOMINO 7019E (43864119)
3/28/17 by JC L1 DOMINO 4044B
BW 88 • WWR 105 • YWR 101



BW 0.4
WW 54
YW 86
Milk 33
M&G 60
CHB\$ 108

Lot 27 — KC L1 DOMINO 17006 (43820312)
3/16/17 by HH ADVANCE 2008Z ET
BW 70 • WWR 111 • YWR 108



BW 3.8
WW 58
YW 92
Milk 28
M&G 57
CHB\$ 104

Lot 28 — KC L1 DOMINO 17011 (43820317)
3/19/17 by HH ADVANCE 2008Z ET
BW 88 • WWR 101 • YWR 99



BW 0.8
WW 56
YW 86
Milk 32
M&G 60
CHB\$ 102

Lot 31 — KC L1 DOMINO 17026 (43833682)
3/26/17 by B&D L1 BARON 4273
BW 73 • WWR 112 • YWR 104



BW 5.9
WW 65
YW 104
Milk 28
M&G 60
CHB\$ 100

Lot 38 — JC L1 DOMINO 7045E (43864163)
4/5/17 by JC L1 DOMINO 4044B
BW 94 • WWR 118 • YWR 115



BW 4.0
WW 65
YW 101
Milk 34
M&G 66
CHB\$ 111

Lot 45 — KC L1 DOMINO 17049 (43833686)
3/30/17 by B&D L1 BARON 4273
BW 90 • WWR 118 • YWR 112



BW 3.4
WW 65
YW 105
Milk 27
M&G 59
CHB\$ 102

Lot 71 — KC L1 DOMINO 17129 (43833703)
4/21/17 by B&D L1 BARON 4273
BW 86 • WWR 106 • YWR 108



BW 2.1
WW 57
YW 96
Milk 29
M&G 57
CHB\$ 105

Lot 76 — KC L1 DOMINO 17156 (43820382)
5/6/17 by HH ADVANCE 2008Z ET
BW 82 • WWR 99 • YWR 105

Jill's Editorial....*(continued from page 1)*

breeder with that calibre of livestock on display. Congratulations to all the winners but especially Hoffman Herefords from Thedford, NE, who won Grand Champion Bull in both Hereford and Angus shows plus Grand Champion Carload just to name a few of their top honors. One of the best parts is seeing many of you there and getting to visit.

We've been working on big issues of the newspaper, more bull sale catalogs, videoing and video sales in preparation for Bull Sale Season up in our area.

There seems to be a lot of optimism for the coming sales and renewed interest in Hereford bulls from commercial cattlemen. I hope this comes to fruition as we get into the heat of the battle. I

believe commercial producers are finally taking note of what a first cross with Herefords will do in their herd. I can hardly wait to see the results this spring for commercial breeders using Hereford bulls on their black cows again.

Hybrid vigor, or the extra boost you get from a first cross such as Hereford and Angus, often results in approximately 25-50 extra pounds at weaning. Do the math on that and you'll realize the extra dollars that are there waiting for you.

Research has also shown a \$30 per head advantage in feedlot profitability and a 7% advantage in pregnancy rate when compared to straightbred commercial calves. They can do all the research they want but commercial producers utilizing a Hereford-Angus

cross can certainly tell you the advantages.

On to another subject... congratulations to my friend Bonnie Zieske of Billings, MT, who is the former ad coordina-

tor for the *Western Ag Reporter*. Bonnie recently retired after 55 years at the *Reporter*! What an amazing career she had working for Pat Goggins and the *Reporter* crew. She has seen a lot of things through the years, mostly advances in the printing business and

has dealt with producers and fieldmen during that time. Throughout my career in ag publications, I've worked with Bonnie trading ads and information back and forth. She is the ultimate professional and I will miss working with her. Happy retirement Bonnie!

— JBH



The old The Denver Union Stockyard Company or Livestock Exchange Building as it is now called was built in 1916 is one of the historical buildings that will remain in the new National Western Complex.



Lots of determination on this young man's face.

Junior Heifer Show in Denver



Piper Colyer from Idaho.



Jeremiah Johnson from SD.

Gant Homegrown 433E

Sire: Pyramid Homegrown 4151 • Dam: Gant M326 287A
BW 2.1 WW 49 YW 84 M27

Gant Thunder 631A

Sire: Connealy Thunder • BW 70 WW 650 YW 1280

*Your Black Baldy Source***Gant Polled Herefords & Angus****Annual Sale****Fri., February 22, 2019****1 PM at GANT RANCH • Complimentary Lunch**

37195 285th St., 2 miles W. of Geddes, SD

**Selling: 50 Two-Year-Old Bulls
Hereford & Angus***Hereford Sires:*

R on Target • JDH About Time
NJW Homegrown • Pyramid Homegrown
NJW Trust 167Y • Gant Trust 398C

Angus Sires:

Mogck Bullseye • WAR Upgrade
Connealy Thunder • Styles Consensus

- First Breeding Season Guarantee • Take Bull Sale Day — Deduct \$50/Bull
- Delivery is Available • Chisum Peterson, Auctioneer

Gant Polled Herefords & Angus

Dennis Gant
605-337-2564 • c: 605-680-1542
37214 285th St., Geddes, SD
dggant@midstatesd.net

Mark Gant
605-337-2340 • c: 605-680-1540
PO Box 15, Geddes, SD
markgant@midstatesd.net

www.gantpolledherefordandangus.com

Kreth Hereford & Angus 54th Annual Production Sale

Saturday, February 23, 2019

FEATURING THESE OUTSTANDING SONS

1:00 pm
At the Farm

14 miles south of Mt. Vernon,
SD off exit 319 of I-90

Selling:
70
Yearling
Bulls
& 10
Registered
Hereford
Heifers

Sale Bulls Stressing:
Calving Ease,
Top Performance,
Strong Maternal Traits

Hereford Sires:

CL1 Domino 215Z
NJW 135U Hometown 27A

Angus Sires:

Connealy Armory
Connealy Niobrara 5451
DL Sonic 444
Connealy Big Money

Check

krethcattle.com

for viewing videos

Auctioneer:
Joe Goggins
406/373-6844

Marc & Jill Hotchkiss
Hereford America
605/490-1513 (M) or 605/490-1409 (J)

Levi Landers
Hereford World
308/730-1396

EPDs 1/3/19



K BULLS EYE 8144F • 43972427

Sire: UU TURNING POINT
MGS: NJW 98S R117 RIBEYE 88X ET

BW	WW	YW	SC	M	MG	FAT	REA	MRB
3.8	72	111	1.2	36	72	-.024	.55	.14



K DOMINO PRIVILEGE 894F • 43972409

Sire: CL 1 DOMINO 215Z
MGS: GO ABE T32

BW	WW	YW	SC	M	MG	FAT	REA	MRB
1.5	67	104	1.0	29	62	.016	.42	.14



K DOMINO PRIVILEGE 8109F • 43972416

Sire: CL 1 DOMINO 215Z
MGS: NJW 98S R117 RIBEYE 88X ET

BW	WW	YW	SC	M	MG	FAT	REA	MRB
1.5	68	104	1.1	30	64	.046	.56	.24



K HOMETOWN BOOMER 869F • P43972405

Sire: NJW 135U 10Y HOMETOWN 27A
MGS: C STOCKMAN 2059 ET

BW	WW	YW	SC	M	MG	FAT	REA	MRB
2.1	61	96	1.1	35	66	.006	.57	.18



K HOMETOWN BOOMER 8136F • P43972423

Sire: NJW 135U 10Y HOMETOWN 27A
MGS: CHURCHILL SENSATION 028X

BW	WW	YW	SC	M	MG	FAT	REA	MRB
0.7	60	92	1.4	37	67	.026	.62	.19



K NIOBRARA 856F • 19263873

Sire: CONNEALY NIOBRARA 5451
MGS: CONNEALY FINAL SOLUTION

BW	WW	YW	SC	M	MG	FAT	REA	MRB
1.9	70	126	—	28	—	—	—	—

Darwin & Pat Kreth

605-236-5769

darwin@krethcattle.com

26791 397th Ave, Mt. Vernon, SD 57363

KRETH HEREFORD & ANGUS

Barclay & Kate Kreth

605-630-8335

barclay@krethcattle.com

26667 397th Ave, Mt. Vernon, SD 57363

CT THE LOWELL FISHER FAMILY CT

PRODUCTION SALE

THURS., FEBRUARY 21, 2019

AT THE RANCH • SPENCER, NE



Two-year-old Bulls

SELLING 54 BULLS

- 24 Two-year-olds
- 8 Fall Bulls
- 22 Yearling Bulls including our Denver carload
- 25 of our top registered Heifers

Sires include: CL 1 Domino 589C • CL 1 Domino 314A • CL 1 Domino 0145X • Ponca Kingpin 204 Sensation • Ponca 0145X • Domino 531 • IJS Mark Domino 1321 • Ponca 7001 Dom 907

The Livestock Link

Sale will broadcast live on
www.theLivestockLink.com. Online
 bidding available on sale day, if you can't
 attend in person. Register early. Videos
 available for viewing by mid-January.



PONCA 0145X DOMINO 822



PONCA 589C DOMINO 812

CT THE LOWELL FISHER FAMILY CT

Est. 1943
 48979 Nordic Rd., Spencer, NE 68777

Lowell and Carol 402-589-1347 402-340-6084 cell	Steven and Dalene Fisher 918-440-4848 Call or text Steve for a Catalog	Nathan Gillaspie, Herdsman 816-401-9677
---	--	---

39th Annual Production Sale

FEBRUARY 24 & 25, 2019

- 285 LOTS SELL -

Females sell Sunday evening, February 24th

25 Open Hereford Heifers | 19 Open Angus Heifers
5 Sexed Female Pregnancies

Bulls sell Monday, February 25th

150 Hereford Bulls | 87 Angus Bulls



AHA
43889924
BW 0.8
WW 53
YW 89
MM 39
REA 0.6
MARB 0.17

LOT 23 - C 4038 Bell Air 8057 ET

Powerful big topped son of Belle Air out of the \$97,000 donor dam 4038 owned with Bowling Ranch in Oklahoma. Low birth genetics with great markings and big carcass traits. Three full brothers also sell.



AHA
P43892523
BW 3.1
WW 57
YW 89
MM 31
REA 0.48
MARB 0.21

LOT 37 - C 2052 Heavy Duty 8087 ET

Huge middled and a soggy made son of 72C out of one of our most popular donors 2052. Lots of IMF and superior maternal traits in this pedigree.



AHA
43889973
BW 0.8
WW 53
YW 89
MM 39
REA 0.6
MARB 0.17

LOT 47 - C 4038 Bell Air 8108 ET

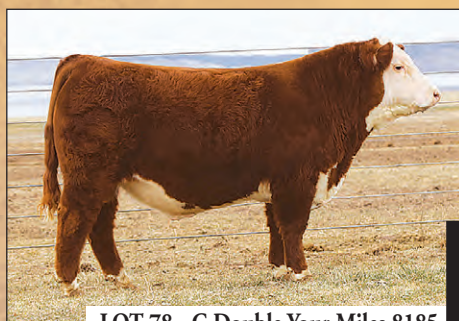
Big time heifer bull candidate and one that could be used on lots of commercial heifer breeding projects. He has as much red as you could put on one and is out of one of the best donors we have in 4038. He will add maternal traits with carcass and superior markings.



AHA
P43890016
BW 2.2
WW 52
YW 85
MM 28
REA 0.6
MARB 0.21

LOT 65 - C CJC 4264 Bell Air 8153 ET

This herd sire will see heavy use in our program in the years to come. He is the polled full brother to the Belle Heir bull that Knox Brothers recently purchased a half-interest in. Great look and incredible pedigree and performance.



AHA
P43890045
BW 2.4
WW 67
YW 95
MM 35
REA 0.65
MARB 0.11

LOT 78 - C Double Your Miles 8185

This is an exciting young prospect who is made perfect in terms of structure, body depth and muscle shape. He is out of a first calf heifer who was a no doubt donor when she calved. Great udders all the way through both sides of his pedigree with his grandmother being 4208 who sets the bar for udder quality.



AHA
P43871964
BW 3.5
WW 61
YW 102
MM 30
REA 0.57
MARB 0.06

LOT 121 - C 105Y Canada 7369

This is a unique herd bull prospect with tons of fleshing ease and body depth. He is a natural calf out of a top daughter of Miles McKee. He has the look of a herd bull with a great set of genetic predictions. Senior bull calf champion in Reno.



AHA
43871943
BW 3.6
WW 64
YW 88
MM 33
REA 0.73
MARB 0.2

LOT 122 - C Special Edition 7348

This son of Special Edition has been a standout all along. He has always been a visitor favorite with his extra look and bold top and hip. He is a natural calf out of a Stockman daughter and should be one of the popular sires on the market.



AHA
P43871950
BW 1.7
WW 63
YW 102
MM 35
REA 0.65
MARB 0.04

LOT 123 - C 4038 Mr Canada 7355 ET

Unique outcross genetic combination which blends Mr. Canada with one of our very best donors 4038. His individual scan data sets him apart from the rest and with his extra look and structure he will be one of the popular choices sale day.



AHA
P43871947
BW 3.6
WW 62
YW 87
MM 31
REA 0.69
MARB -0.01

LOT 124 - C 5280 1311 Lad 7352 ET

If you remember back to what "Double Your Miles" looked like when he was named National Champion in Denver 2017 this one is like looking in a mirror. Big bodied and huge hiped with that same dark color pattern and scanned with a huge ribeye. His brothers have proven to be big time herd sires and this one will do the same.

Colyer
HEREFORDS & ANGUS
www.hereford.com

Guy, Sherry and Katie Colyer, 208.845.2313

Kyle and Bobby Jean, 208.845.2098

GUY cell: 208.599.0340 • email: guy@hereford.com

KYLE cell: 208.250.3924 • FAX: 208.845.2314

Fort Keogh

Livestock & Range Research Laboratory

Miles City, MT

2019 Research Animal Sale

Sat., March 9, 2019 1 pm

Miles City Livestock Commission

Offering coming 2-year-old Line 1 Hereford bulls

243 Fort Keogh Road
Miles City, Mt 59301



Brad Eik 406-853-2635
Tom Mott 406-853-2637



COOPER HEREFORD RANCH

53rd Annual Production Sale

— TUESDAY, MARCH 12, 2019 —

at the ranch, 1/2 mile South of Willow Creek, MT



Free Delivery!!

first 1,000 miles, on purchases totaling \$5000+

All animals selling have
Genomically Enhanced EPDs



Complete Performance
& Ultrasound Data

43908962

CL 1 Domino 883F 1ET



CL 1 Domino 6128D X CL 1 Dominette 450B

He's one of our favorites!! Full brother to 8120F (pictured below).
Top 30% in 11 traits including top 1% for WW, YW, M&G and Carcass Wt.
Good pigment, red to the ground, clean fronted! Sire topped our sale in 2017!

43903300

CL 1 Domino 8117F 1ET



CL 1 Domino 6187D X CL 1 Dominette 4131B

Clean fronted, red to the ground, calving ease prospect! Super balanced EPD profile - Top 30% in 11 traits! Sire is a trait leader in 8 traits. Dam is a favorite and ranks in the top 20% in 7 traits including top 1% for Marbling.

43903316

CL 1 Domino 8138F 1ET

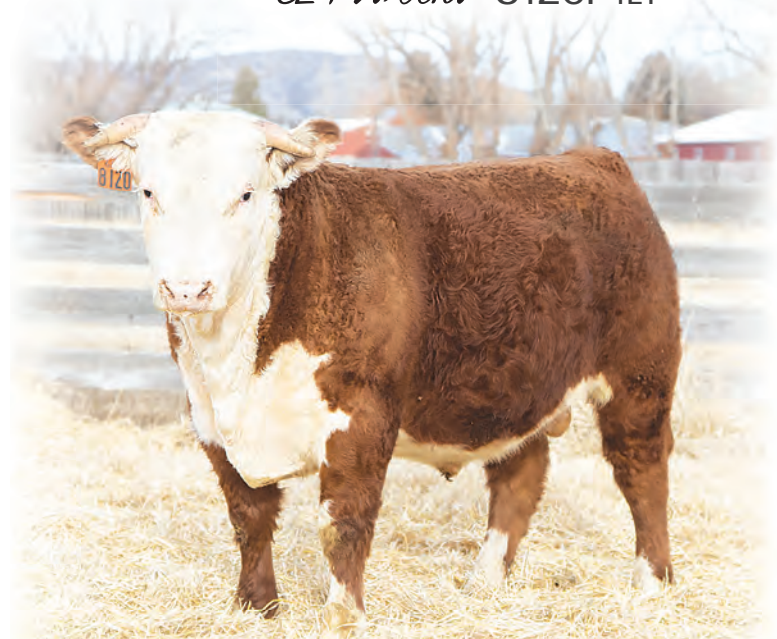


CL 1 Domino 6187D X CL 1 Dominette 2185Z

Deep ribbed with 100% pigment. Calving ease prospect that's marked up nicely. Ranks top 10% for CED, WW, YW and top 1% Marbling. Dam 2185Z has a Yearling ratio (101) and Marbling ratio (135) on 3 calves, and ranks in top 15% for Carc. Wt., REA, Marbling & CHB.

43908965

CL 1 Domino 8120F 1ET



CL 1 Domino 6128D X CL 1 Dominette 450B

Lots of performance and solid carcass in this pedigree. Top 35% in 13 traits, including top 10% for WW, YW, SC, M&G and Marbling. He's stout, thick topped, with a big hip, and lots of muscle! Sire is a trait leader in 7 traits, including top 1% for WW, YW, M&G, Carc. Wt., REA. Dam has a great udder and ranks in the top 5% for Marbling and top 25% for CED, WW, YW, M&G and CEM.

visit us on the web to view photos & videos

www.cooperherefords.com

Contact Mark Cooper (406) 539-6885 Dave Hanson (406) 570-5519

LiveAuctions.TV

Selling:

**85 YEARLING BULLS
20 YEARLING HEIFERS
15 YOUNG BRED COWS
3 PROVEN DONOR COWS**



POWERFUL, PROVEN & PREDICTABLE

53rd ANNUAL PRODUCTION SALE

MONDAY, MARCH 11, 2019

AT THE RANCH, VALIER, MONT. • 12:30 (MDT)

150 POWERFUL PERFORMANCE TESTED HEREFORD BULLS

130 BIG, STOUT YEARLING BULLS • 20 POWERHOUSE 18-MONTH-OLD BULLS

40 FRONT PASTURE LINE ONE FEMALES

2 ELITE DONORS • 5 SPECIAL ET HEIFERS • 6 YOUNG BRED COWS

20 TOP QUALITY YEARLING HEIFERS • 5 FALL BRED COWS W/ HEIFER CALVES

- Bulls sell with complete performance and ultrasound data •
- 100% of sale offering is DNA parentage verified and have GE EPD's •
- Over 50% of the sale offering ranks in the top 15% of the breed or higher on CHB\$ •
- Free delivery on purchases totaling \$5000 or more •
- Buy from a program with 60 years of consistent balanced trait selection backed by a linebreeding program that guarantees uniformity and predictability and is built on a strong maternal foundation •



HH ADVANCE 8101F

- Sire: HH Advance 5148C ET
- MGS: HH Advance 3297A ET
- CED 1.9 BW 4.1 WW 67 YW 109 MM 30 M&G 63 REA .63 MARB .07 CHB\$ 116
- This powerhouse herd bull prospect is the top bull in the sale on both NR and YR. and posted an adj. 205 day wt. of 849 lbs. and adj. 365 of 1450 lbs. Well marked, thick, stylish and out of a top first calf heifer. Top 5% on WW, YW, M&G, and CWT EPD's and top 10% on REA EPD and CHB\$.



HH ADVANCE 8020F ET

- Sire: HH Advance 5107C ET
- MGS: CL 1 Domino 9122W 1ET
- CED 5.7 BW 2.4 WW 60 YW 97 MM 24 M&G 54 REA .37 MARB .30 CHB\$ 86
- 8020F and his full brother are both elite herd bull prospects out of the 2131Z Cooper donor. He is big bellied, thick topped, and has outstanding EPD's including top 10% on MARB EPD.



HH ADVANCE 8090F ET

- Sire: HH Advance 6007D ET
- MGS: HH Advance 9144W
- CED 6.9 BW 2.7 WW 60 YW 90 MM 27 M&G 57 REA .46 MARB .34 CHB\$ 115
- Curve bender deluxe with extra carcass strength. 8090F is a fancy made, deep flanked, big topped, stout made herd bull prospect that ranks in the top 3% on CWT and MARB EPD's, the top 10% on WW EPD and CHB\$, and the top 15% on CED and M&G EPD's. Dam is an elite donor out of the 5139R cow family.



HH ADVANCE 8071F ET

- Sire: HH Advance 5304C ET
- MGS: HH Advance 9144W
- CED 3.7 BW 3.4 WW 44 YW 76 MM 34 M&G 56 REA .61 MARB .08 CHB\$ 114
- Top notch herd bull prospect with extra thickness, eye appeal, and 100% pigment. 8071F is deep sided, square made and out of the 1010Y donor cow. Great genetic package with extra maternal and carcass strength.



HH ADVANCE 5107C ET

- 5107C was the \$160,000 high selling bull in our 2016 Sale. This powerful son of the 215Z bull has an exceptional EPD profile that ranks him in the top 1% on WW, YW, and CWT EPD's, and the top 5% on REA EPD. SONS SELL!



HH ADVANCE 8120F ET

- Sire: HH Advance 6007D ET
- MGS: HH Advance 8203U ET
- CED 1.0 BW 5.0 WW 60 YW 91 MM 22 M&G 52 REA .88 MARB .30 CHB\$ 144
- Big time growth, carcass, and maternal power combined with a flawless phenotype. 8120F is a true beef bull in every way and ranks as the #5 horned bull with GE EPD's born in 2018 on CHB\$. He ranks in the top 5% of the breed or higher on Udder, Teat, REA, and MARB EPD's and the top 15% on WW EPD. This exciting young prospect will be used extensively in our program going forward.

Holden Herefords



3139 Valier Dupuyer Rd. • Valier, MT 59486
 www.holdenherefords.com • jtholden@3rivers.net
 406-279-3301 home • 406-279-3300 Ranch
 406-450-1029 Jack Holden cell
 406-590-3307 Brad Holden cell
 406-450-0129 Jay D. Evans cell
 406-600-3118 Eric Lawver

DVD's will be available on the sale offering.
 View videos of the sale offering at
 www.thelivestocklink.com or our website.
 Call or e-mail for a catalog.

Broadcast Live on

EPDs 1/11/19



LiveAuctions TV

FOCUSED ON SELECTION FOR THE TRAITS THAT PUT \$\$\$ IN OUR CUSTOMERS POCKETS

*Fertility
*Udder Quality

*Calving Ease
*Pigment

*Performance
*Longevity

*Structural
Soundness

*Fleshing Ability
*Carcass Quality

Backed by one of the top cowherds in the world with a rigorous no excuses mindset on culling.
Many 3/4 and full brothers selling with almost 50% of our sale offering coming from our extensive ET program.



CL 1 DOMINO 5110C

- CED 0.9 BW 4.2 WW 62 YW 99 MM 32 M&G 63 REA .38 MARB .06 CHB\$ 97
- 5110C was the \$130,000 high selling bull in Cooper's 2016 Sale. He is big bodied, thick topped, and massive in his bone and substance. He is a maternal brother to the 215Z bull and also to the 6128D bull that topped their 2017 Sale. His dam is an elite donor and one of the top cows in the Hereford breed. A great set of sons sell!



HH ADVANCE 3297A ET

- CED 2.4 BW 3.4 WW 65 YW 111 MM 31 M&G 64 REA .79 MARB .19 CHB\$ 138
- Powerful, proven sire of pigment, muscle, maternal, carcass, and eye appeal. 3297A is a trait leader for WW, YW, Milk, M&G, Teat, CWT, REA, and MARB EPD's and also ranks in the top 1% on CHB\$. Sons sell!



HH ADVANCE 3006A

- CED 1.4 BW 1.9 WW 70 YW 105 MM 40 M&G 75 REA .25 MARB .27 CHB\$ 96
- 3006A sires extra pigment, growth, maternal, and carcass in a great package. He is a trait leader for WW, Scrotal, Milk, M&G, Fat, and MARB EPD's. Sons sell!



HH ADVANCE 8218F

- Sire: CL 1 Domino 5110C
- MGS: HH Advance 1013Y ET
- CED 4.1 BW 3.7 WW 60 YW 101 MM 30 M&G 60 REA .38 MARB .13 CHB\$ 95
- Big bodied, thick butted, extra fancy and out of a top donor cow.



HH ADVANCE 8057F

- Sire: HH Advance 3297A ET
- CED 2.0 BW 3.4 WW 58 YW 101 MM 31 M&G 61 REA .32 MARB .39 CHB\$ 106
- Growth, maternal, and carcass combined with a great phenotype. Top 4% on YW, M&G, and MARB EPD's. Loads of genetic potential!



HH ADVANCE 8008F

- Sire: HH Advance 3006A
- MGS: HH Advance 3297A ET
- CED 3.8 BW 1.7 WW 64 YW 104 MM 36 M&G 68 REA .66 MARB .37 CHB\$ 119
- Curve bender deluxe with big time carcass EPD's. Exceptional prospect!



HH ADVANCE 8075F ET

- Sire: CL 1 Domino 5110C
- MGS: CL 1 Domino 1131Y 1ET
- CED 2.3 BW 3.7 WW 65 YW 104 MM 33 M&G 66 REA .67 MARB .01 CHB\$ 115
- Extreme volume and capacity. Top 5% on WW, Milk, CWT and REA EPD's.



HH ADVANCE 8010F ET

- Sire: HH Advance 5107C ET
- CED 4.1 BW 3.8 WW 67 YW 103 MM 23 M&G 57 REA .78 MARB .32 CHB\$ 141
- Big time herd bull prospect that ranks in the top 5% on WW, YW, Udder, Teat, CWT, MARB and REA EPD's and the top 1% on CHB\$.



HH ADVANCE 8045F ET

- Sire: HH Advance 4075B ET
- MGS: CL 1 Domino 017X
- CED 0.4 BW 4.8 WW 61 YW 82 MM 25 M&G 55 REA .44 MARB .12 CHB\$ 120
- Loads of volume, capacity, and eye appeal. Built just like his sire.

40 ELITE LINE ONE LADIES SELL!



HH MISS ADVANCE 8081F ET

- Sire: HH Advance 5107C ET
- CED 1.8 BW 4.1 WW 65 YW 107 MM 23 M&G 56 REA .64 MARB .20 CHB\$ 126
- Full sister to 8010F. Exceptional EPD's and phenotype. She sells!



HH MISS ADVANCE 8047F ET

- CED 8.2 BW 2.6 WW 55 YW 81 MM 23 M&G 51 REA .60 MARB .28 CHB\$ 123
- This future donor has it all. A great look, EPD's that rank in the top 10% on CED, Teat, CWT, REA and MARB EPD's and the top 4% on CHB\$, and is backed by the 5139R cow family. She sells!




HH MISS ADVANCE 3123A

- CED 4.6 BW 2.3 WW 56 YW 89 MM 31 M&G 59 REA .51 MARB .17 CHB\$ 120
- Freckle faced, perfect uddered, powerful made donor prospect that is a real eye catcher. Due in early April to HH Advance 6212D ET. She sells!

JENSEN BROS.

HEREFORD & SIM/ANGUS BULL SALE At the Ranch | 1:00 PM CST | MARCH 7, 2019

FEATURING FIRST SONS OF SUPREME DENVER CHAMPION STOCK OPTION AND LEADER SONS




260F
STOCK OPTION 6026D X 236X

CE	BW	WW	YW	DM	SC	M&G	CEM	CW	REA	MARB	BMI	BII	CHB
-1.4	3.4	61	96	0.2	1.5	60	0.0	81	0.80	0.06	\$348	\$419	\$126



285F
STOCK OPTION 6026D X 236X

CE	BW	WW	YW	DM	SC	M&G	CEM	CW	REA	MARB	BMI	BII	CHB
-3.0	4.0	68	93	0.0	1.4	59	-0.8	76	0.73	0.04	\$345	\$412	\$124




210E
LARAMIE 619D X 236X

CE	BW	WW	YW	DM	SC	M&G	CEM	CW	REA	MARB	BMI	BII	CHB
2.9	0.9	59	97	0.3	1.5	59	1.1	79	0.75	-0.04	\$375	\$439	\$122



209F
LEADER 6964 X 591Y

CE	BW	WW	YW	DM	SC	M&G	CEM	CW	REA	MARB	BMI	BII	CHB
3.8	3.1	70	105	0.3	1.2	63	3.9	82	0.58	0.01	\$420	\$502	\$121



205F
LEADER 6964 X 482Y

CE	BW	WW	YW	DM	SC	M&G	CEM	CW	REA	MARB	BMI	BII	CHB
3.0	3.7	70	111	0.4	1.2	64	4.7	82	0.51	0.07	\$424	\$511	\$120

Calving Ease Bulls **
Carcass Bulls **
Performance Bulls **



2018 NWSS Reserve Champion Carload
ALL DENVER BULLS SELL MARCH 7TH

REQUEST A CATALOG TODAY - jensenks@courtland.net | VIDEOS ONLINE AT www.jensenbros.net
FREE DELIVERY AND WINTERING TIL APRIL 15 | SALE BULLS EPD'S ARE DNA ENHANCED



KEVIN & SHEILA JENSEN
PO Box 197, Courtland, Kansas 66939 785-374-4372
Kevin 785-243-6397 Sheila 785-262-1116 Brady 785-614-1645
HERDSMAN Eddie Sandberg 765-490-1719



WE ARE COMMITTED TO CUSTOMER SATISFACTION AND SERVICE.

L BAR W CATTLE COMPANY

THE PINNACLE OF HEREFORD GENETICS

THIRD ANNUAL PRODUCTION SALE

MARCH 8, 2019

ABSAROOKEE, MT

1 PM MST

BULLS

30 YEARLINGS

4 TWO YEAR OLDS

CHOICE HEIFER LOT

HH Advance 5044C ET x

HH Miss Advance 9228W

COWS

12 YOUNG BRED

DONOR

SEMEN PACKAGE

CL Domino 776E

All cattle selling have genomically enhanced EPD's

Sire Groups include:

HH Advance 5044C ET	#43578992
CL 1 Domino 402B	#43465721
HH Advance 4126B	#43470169
CL1 Domino 6153D 1ET	#43691837
HH Advance 6237D ET	#43688572
LW 4163 Domino 606D	#43683071

LiveAuctions.TV

On Site Contact: Kate Roberts 541-891-3060
Customer Service: 817-624-3800 or 800-431-4452



LW 5044 ADVANCE 807F ET • 43917698



LW 4126 ADVANCE 859F • 43912015



LW 6237 ADVANCE 873F • 43912025



LW 8050 MISS ADVANCE 519C ET • 43600651



GB L1 DOM PRCS 443X • 43488849



LW 3006 ADVANCE 726E ET • 43826852



LW 4126 ADVANCE 751E • 43826924



CL1 Domino 776E 1ET • 43800364

Auctioneer

Justin Stout 913-645-5136

Sales Representatives

Bill Pelton 406-671-5100

Art Handel 605-391-8233

Please check out

LBarW.com for more details,
videos and to request a catalog.

Carl & Denise Loyning
cdloyning@gmail.com
406-425-2484 (c)

21 Red Barn Lane | Absarokee, MT 59001
(406) 328-4095 ranch
www.LBarW.com | Find Us Facebook

Mike & Jeannette Walen
L87772@aol.com
281-413-2455 (c)

Durbin Creek Ranch

Cattle for Commercial Cowmen
from Commercial Cowmen

The Agar Family



3292 Grass Creek Road ★ Thermopolis, WY 82443 ★ (307) 867-2404 ★ www.durbincreekranch.com

DCR industry moving bulls will add value to your program!

NJW 78P 88X Cowboss 199B

DCR 199B Cowboy Joe 7650
Lot 1



CED	Milk
2.0	29
BW	REA
2.8	0.67
WW	Marb
57	0.12
YW	CHB
96	\$124

CED	Milk
3.5	22
BW	REA
1.8	0.58
WW	Marb
50	0.09
YW	CHB
81	\$113

DCR 199B Slinger 7649
Lot 2



"The longer we use NJW 78P 88X Cowboss 199B in our commercial program the more impressive his real world data becomes! His calves come easy, mature early, convert feed and hang up dollar generating carcasses."

DCR 199B Cowboss 7220
Lot 11



CED	Milk
3.7	26
BW	REA
3.3	0.7
WW	Marb
58	0.08
YW	CHB
102	\$135

CED	Milk
5.7	26
BW	REA
1.6	0.5
WW	Marb
42	0.09
YW	CHB
79	\$110

DCR 199B Cowboss 7208
Lot 9



DCR 199B Cowboss 7236
Lot 15



CED	Milk
-0.4	26
BW	REA
4.1	0.61
WW	Marb
47	-0.01
YW	CHB
72	\$115

New Date!
Don't miss this sale!

SUPERIOR
Productions
BROADCAST LIVE ON
SUPERIORCLICKTO.BID.COM
SUPERIORLIVESTOCK.COM
1-800-422-2117

Annual Bull Sale
Thurs., Feb. 28, 2019
Worland, Wyoming

Mrnak Hereford Ranch

52nd Annual Production Sale

Sunday, February 10, 2019

1:00 p.m. (MST) - Bowman Auction Market - Bowman, ND

SELLING:

- 100 Performance Tested 2 Year Old Hereford Bulls
- 300 Yearling Black Baldy Replacement Heifers
- 60 Bred Heifers - Bred to Mrnak Bulls
- 5 Ranch Ready Horses

MH 4119 ADVANCE 735 1ET

Sire: MH 2239 ADVANCE 4119



BW: 2.0 • WW: 49 • YW: 105
MM: 32 • M&G: 56

MH FRONTIER 736 1ET

Sire: MH 9067 DOMINO 2249



BW: 1.8 • WW: 44 • YW: 85
MM: 27 • M&G: 49

MH 4119 ADVANCE 746 1ET

Sire: MH 2239 ADVANCE 4119



BW: 2.3 • WW: 50 • YW: 96
MM: 27 • M&G: 52

MH 4111 TRUST 755 1ET

Sire: MH TRUST 4111 1ET



BW: 1.8 • WW: 46 • YW: 89
MM: 33 • M&G: 56

MH 2239 ADVANCE 789

Sire: H5 9075 ADVANCE 2239



BW: 4.6 • WW: 69 • YW: 113
MM: 27 • M&G: 62

MH FRONTIER 7310

Sire: MH 9067 DOMINO 2249



BW: 3.6 • WW: 54 • YW: 123
MM: 29 • M&G: 56



Wayne Mrnak • 701.523.6368 • Terry Mrnak • 701.523.6386
Brent Mrnak • 701.206.0604 • Andy Mrnak • 701.206.1095

Mrnak Hereford Ranch: 14501 91st St. SW • Bowman, ND 58623

View more information at • www.mrnakherefords.com

Final Farewell...

Gilbert Henry Ochsner

Gilbert Henry Ochsner was born December 28, 1926 on the family farm 14 miles northwest of St. Francis, KS, to Henry and Lydia Rath Ochsner. Gilbert was the youngest of 6 children and was born on his dad's 40th birthday. He passed away peacefully in his sleep on March 27, 2018 at home, surrounded



by his family.

He was baptized at Hope Valley Lutheran Church in 1927 and was confirmed at Salem Lutheran Church in April 1941. He attended the Northrup rural school until 8th grade and then attended St. Francis Community High School. He lived in his Grandma Carolina Ochsner Brunswig's basement during that time. All four years of high school he worked after school and Saturdays at the Co-op grocery store, except during wrestling season. His senior year he placed 4th in the state wrestling tournament at 154 lbs. He graduated from high school in 1944.

He was inducted in the Army at Fort Logan, CO in October 1945 and took Basic Training at Ft. Leavenworth, KS as part of the 5th Army. He spent most of his time working in the separation center at Ft. Leavenworth. Gilbert had the most respect for the battle weary soldiers as they came through the center. He considered himself one of the

lucky ones but proud to have served.

Upon being discharged in November 1946 at Ft. Riley, KS, Gilbert returned to the family farm and began raising registered Hereford cattle and wheat. When he did have some spare time Gilbert enjoyed playing catcher on a traveling baseball team in the late 1940s and early 1950s. He also enjoyed boating at the lake. After his playing days were over he coached baseball, fast-pitch and slow-pitch softball teams in Haigler, NE, St. Francis, KS and Wray, CO.

He met his future wife, Shirley Fredericks, Labor Day weekend 1965 at Bonnie Dam Reservoir during a day of boating and water skiing. Gilbert and Shirley were married on February 26, 1966 in Lyford, TX. They returned to start their life together on the family farm and eventually had two children, Brian Alan and Sarah Elizabeth.

Gilbert truly enjoyed farm life. The farm was his vocation and hobby where

he spent most of his time. He served on many boards such as the church council, rural cemetery board, FSA, FHA, the Soil Conservation board and as a director and President of the Kansas Hereford Association. Blessed with good health almost all of his life, Gilbert was active on the farm and ranch as much as possible until the end. He worked his last wheat harvest at age 89. He was in the registered Hereford business for 62 years.

He was preceded in death by his parents, Henry and Lydia Rath Ochsner; brothers Harvey, Leonard, Garfield and Howard Ochsner; sister Arlene Busse, brother-in-law Martin Busse, sister-in-law Ilene Ochsner and nephew Dennis Ochsner. He is survived by his wife of 52 years, Shirley; son Brian of Aurora, CO; daughter Sarah of Chicago, IL; sisters-in-law Darlene Ochsner, Nettie Ochsner and Genevieve Ochsner; and many nephews, nieces, extended family and friends who were all very dear to him.

Thomas (Tom) Peckenpaugh

Thomas (Tom) Peckenpaugh, 74, De Smet, SD, died Sunday September 9, 2018 at the De Smet Good Samaritan Center, De Smet, SD, after a 2-year battle with cancer.

Thomas Paul Peckenpaugh was born October 14, 1943 to Francis and Loretta (Callahan) Peckenpaugh at Carthage, SD. He graduated from De Smet High School in 1962. After high school, he attended South Dakota State University and graduated in 1967 with a degree in Animal Science. While at SDSU, he was a member of the SDSU rodeo team, where he competed in bull riding and bareback riding.

Following his graduation from SDSU, he returned to the family farm. Family was very important to Tom. He loved farming, ranching his Hereford cattle, and his Quarter Horses.

Tom is survived by two brothers, Jim Peckenpaugh, Carthage SD; and Bob (Nancy) Peckenpaugh, Carthage; five sisters, Helen (Jim) Heiter, Alexandria SD; Mary (Roger) Widman, De Smet; Margaret (James) Mourek, De Smet; Janice (Alan) Serfling, Madison SD; and Pat Peckenpaugh, Sioux Falls, SD; 15 nieces and nephews and several great-nieces and nephews, and friend, Judy Fredrichs.

Tom Bradbury

The Bradbury family has lost its North Star. After complications from a knee replacement surgery that included two follow-up surgeries and then an allergic reaction to an antibiotic, Thomas Bradbury died early morning on January 10, 2019.

Tom was a well-known Colorado rancher, horseman, and businessman who impacted nearly every person he met. He loved the Denver Broncos, was the most-loyal of friend, and wanted to have the best ranches and fastest quar-

(continued on page 22)

ULRICH

HEREFORDS



The current exchange rate gives US buyers a huge discount!

13th Annual **BULL SALE** Tuesday, **Feb. 26th, 2019**
Balog Auction, Lethbridge, AB



Approx. 50 Bulls on Offer!!



GCC PETE 203Y

EPDs & performance data (including ultrasound & RFI) available on website &/or sale day.

ULRICH



AGA 18Y ZOOM STANDARD 18Z



AGA 203Y GREGORY PETE 42E

SON SELLS!

SON SELLS!



AGA 18Z ZOOM STAN EARNER 32E



AGA 67X ELECTRIC EXPRESS 16E

Specializing in
LIGHT BIRTHWEIGHTS
with
GREAT PERFORMANCE
plus
REMARKABLE COWS



AGA 43K STANMORE ELEMENT 47E

STANMORE 43K
AGA 705 EASYGOING EXPRESS 67X
AGA 60W BANNER SPORT ZEAL 28Z

OTHER Sires INCLUDE:
WH 9A RUST TEMPEST 372A
AGA 127Y YES SIRE BLASTOFF 407B
AGA 18Z ZOOM STAN CREDITOR 77C

AGA 15H BRIT CANDIDATE ET 97C
AGA 137A MO LE BRIT CHUCK 110C
AMONG OTHERS ...

Peter Ulrich
(403) 625-1036

peter@ulrichherefords.com

Available to view on **ulrichherefords.com**

ULRICH HEREFORD RANCH INC

Hans Ulrich
(403) 625-2237

www.ulrichherefords.com

Box 843, Claresholm, Alberta T0L 0T0 • From Claresholm: 8 mi (12.8 km) E on Hwy 520, 4m (6.4 km) N on RR 255 & 1/4 mile E on TWP 132

THE HERD SIRES...



NJW 135U 10Y Hometown 27A
BW 1.4 WW 60 YW 98 MILK 31 / REA .58 MARB .20
Volume Beef Bull ...Sons & Daughters Sell!



NJW 76S 27A Long Range 203D
BW 2.9 WW 60 YW 105 MILK 29 / REA .57 MARB .04
Herd Builder! A Pedigree of our Best ...Sons & Daughters Sell!

SALE FEATURES!



New in 2019 ...Selling 30 Registered Yearling Heifers!



HE SELLS on March 27th!
NJW 160Z 10W Whit 33B
BW 3.8 WW 65 YW 102 MILK 28 / REA .45 MARB -.06
Proven Herd Sire Sells ...Homozygous Polled!



74F
NJW 73S 10W HONEST 74F ET (Homozygous Polled)
BW -.03 WW 57 YW 85 MILK 30 M&G 59 / REA .81 MB -.03

Sale Broadcast By: **LiveAuctions TV**
KATIE COLYER 208/599-2962

NJWHerefords.com

THE NED & JAN WARD QUALITY PROGRAM

Ned, Jan & Bell Ward 307/ 672-3248
Ned (c) 307/ 751-8298 • Jan (c) 307/ 751-9470
Jake Bare (c) 406/ 780-0056
247A Decker Road • Sheridan, WY 82801
njwardherefords@gmail.com

NJW

JF

**POLLED
HEREFORDS**

BULL SALE

WED. MARCH 27, 2019

AT THE RANCH • SHERIDAN, WY

Selling 100 Balanced Trait, Big Bodied,
Easy Flething, Maternally-Powered Bulls
...and,

30 Registered Yearling Heifers
Select Groups Baldy Yearling Heifers



Bulls Raised
on Good Cows &
Wyoming Range (no creep)!
We DEMAND our Cows have GOOD udders, are
GREAT Mothers and Calves be VIGOROUS at Birth!

HEREFORDS FOR TODAY'S CATTLEMAN ...Thick, Long Lasting, Durable, Money Makers!



34F
NJW 11B 88X SETTLER 34F ET
BW -.02 WW 51 YW 77 MILK 32 M&G 57 / REA .45 MARB .31



68F
NJW 12A 109Z HUDSON 68F ET
BW 1.1 WW 46 YW 83 MILK 36 M&G 59 / REA .58 MARB -.01



218F
NJW 45C 203D RANGE 218F
BW 1.7 WW 54 YW 97 MILK 27 M&G 54 / REA .11 MARB .09



181F
NJW 127Z 93C PARTNER 181F
BW 0.8 WW 48 YW 66 MILK 24 M&G 48 / REA .49 MARB .31



119F
(Homozygous Polled) **NJW 46Z 33B SLAPJACK 119F**
BW 2.6 WW 55 YW 90 MILK 30 M&G 58 / REA .37 MARB .04



238F
(Homozygous Polled) **NJW 84B 4040 FORTIFIED 238F**
BW 0.8 WW 59 YW 102 MILK 27 M&G 56 / REA .46 MARB .28



120F
NJW 165A 88X COWCAMP 120F ET
BW 0.6 WW 48 YW 72 MILK 34 M&G 57 / REA .48 MARB .21



132F
BW 208D 6D DOOR BUSTER 132F
BW 3.2 WW 60 YW 91 MILK 29 M&G 59 / REA .78 MARB .04

(Bradbury...continued from page 20)
ter horses possible.

Born in Denver, CO raised in Littleton, CO and a proud graduate and passionate supporter of CSU. While at CSU, he met and married Margaret, who has been his faithful and loving wife for 60 years.

In 1958, they founded Bradbury Land & Cattle Co. near Byers, CO where they made their home for 45 years and where the family continues



Tom Bradbury

to own ranches. Tom was inducted in the American Quarter Horse Hall of Fame, proudly served on the National Western Executive Board for over a decade, was a CSU Distinguished Alumni Award recipient, and was inducted to the Colorado Agriculture Hall of Fame. He served on various Boards, both locally and nationally, for over 50 years.

He was compassionate towards youth and tried to encourage them to better themselves. Just as he aimed for continuous improvement on his ranches and his businesses, he strived to make his local community and the ag world better.

Tom is survived by his wife, Margaret; his children Suzie, Tom (Penny), Lisa (Mark), and son-in-law, Allen; along with 13 grandchildren and 1 great grandchild.

He was preceded in death by his parents, Thomas O. and Gladys C. Bradbury; his daughter, Pamela; and grandson, Drew.

Sale Report

**Knoll Crest Farm
Fall Bull Sale
November 30, 2018
Red House, VA**

**147 Bulls — \$4,880
30 Hereford Bulls — \$3,965**

Top Herefords:

Lot 91, KCF Bennett 504C E696, 10/15/17 by BEHM 100W Cuda 504C to Driven Farms LLC, Buford, GA, \$8,000.

Lot 109, KCF Bennett B284 E460, 9/18/17 by KCF Bennett Provident B284 to McConnell Herefords, Marietta, SC and Country Corner Farm, Greer, SC, \$7,500.

Lot 105, KCF Bennett B716 E623,

10/1/17 by KCF Bennett Devout B716 ET to Estancia Valley Cattle & Farms, McIntosh, NM, \$6,500.

Lot 103, KCF Bennett 504C E587 9/27/17 by BEHM 100W Cuda 504C to Greeno Farms, Louisa, VA, \$6,250.

Lot 114, KCF Bennett York E503, 9/22/17 by SHF York 19H Y02 to Keese Herefords, Seneca, SC, \$6,000.

Future Feeders: Cattlemen's challenge opens new possibilities for South Dakota students

by Jager Robinson,
Tri-State Neighbor Reporter

Jacob Rausch, 19, looks out over a group of calves at the South Dakota State University Cow-Calf Education and Research Unit in Brookings. Rausch, who hails from Hoven, S.D., will be participating in South Dakota Cattlemen's Foundation's first ever Fed Cattle Challenge in 2019.

Discovering your passion early on in your life is often a struggle. Some kids want to be astronauts, and some want to race cars. But for Jacob Rausch, his family's Hoven, South Dakota operation taught him that simply feeding cattle may be one of the most rewarding experiences in life.

"I got to sit in the feeding tractor and feed all winter long," said Rausch, 19, a sophomore at South Dakota State University. "That's when I realized I loved feeding cattle."

Rausch and 21 other 14 to 18 year olds will be participating in the South Dakota Cattlemen Foundation's (SDCF) first annual Fed Cattle Challenge over the next six months.

The program is meant to help teens learn the process of finishing cattle. They'll do so by purchasing a share of cattle at the Winner Circle feed yard in Winner, South Dakota. The feed yard will take care of housing, feeding and vaccinating the animals through harvest, but the students will have to calculate costs and profits and ultimately present what they learned.

The Fed Cattle Challenge is South Dakota Cattlemen's Foundation's first program of its kind. Through it, foundation members hope younger kids experience what they call the most underappreciated side of the livestock industry.

(continued on page 24)



Jacob Rausch

Thorstenson HEREFORD RANCH

**Production Sale
SAT., APR. 13, 2019
1:00 (CDT) • At the Ranch
Selby, South Dakota**

THR THOR 4269B

reg# P43503524
BW 2.3 WW 59 YW 93 M 21
MG 50 REA .61 MRB .25

**Selling
70 Bulls
Hereford & Angus**

Plus

**15 Registered
Hereford Heifers
15 Angus Heifers**

Bill & Darin Thorstenson
Bill: 605-845-6108
Darin: 605-321-6416
6804 Overholzer Ave.
Selby, SD 57472

wpthorstenson@venturecomm.net
www.thorstensonherefordranch.com

Driving Your Herd *To Great Genetics*

Production Sale: March 2, 2019 • Huron, SD



PF 4239 Bolt 8112



RV Double Miles 8914 ET



RV Double Miles 8523 ET



RV Homestyle 8094 ET



RV Homestyle 8143



RV Redemption 8821 ET



Offering:

- 50 Yearling Hereford Bulls
- 15 Two Year Old Hereford Bulls
- 25 Registered Yearling Hereford Heifers
- 20 Commercial Yearling Hereford Heifers
- 50 F1 Baldy Yearling Heifers

Sires Include:

- C Double Your Miles 6077 ET
- Churchill Kickstart 501C ET
- RV Homestyle 5611
- RV Thunderstruck 4239
- SHF Dakota A191 D157
- JDH Victor 719T 33Z ET



Gerald & Janelle Bischoff
Garret Bischoff, Matt & Heather Bischoff
20025 399th Ave • Huron, SD • 605.352.5530
ravinecr@santel.net • ravinecreekranch.com

If you aren't able to attend, watch and bid online at
www.TheLivestockLink.com



Mike & Lori Peskey
Mike: 605-350-5788
Lori: 605-350-1015
peskeyfarm@gmail.com



Beery Land and Livestock –

Deep Hereford Roots and A Willingness to Look Forward

by Terra Ochsner

“We cannot be divided as a breed,” stated Matt Beery of Beery’s Land & Livestock, Vida, MT. Matt firmly believes that the Hereford industry has an opportunity to stake its claim in the market share, but only if its breeders are willing to come together. In order to do this, Beery believes that more breeders need to focus on the needs of the buyer.

“I would say that you need to raise the best genetics that will compliment your customers,” Beery commented.

Instead, Beery has noticed that the Hereford industry is at odds, as opposed to working together to focus on “what the breed can do for the commercial industry.” He sees this division between breeders who are more “traditional”,

whose major focus is on the purity of Herefords.

More specifically, Beery sees this as a disagreement between those who are unwilling to carry anything but horned genetics, along with those who don’t see the benefits of the F1 cross, stacked against producers who have begun to make a change to their operations.

“I’m sorry that the breed is so divided. We have got to remember that we are *all* members of the beef industry,” Beery pointed out.



Wagner

HEREFORDS

at our farm,
Redfield, SD

Selling:

20 Yearling Hereford Bulls

20 Two-Year Old Hereford Bulls

50 Black Baldie Heifers bred to Special Focus

New Sale Format!!

OPEN HOUSE &
ONLINE EVENT

2.23.2019

OPEN HOUSE 11 AM
SALE CLOSES 3:30 PM

Bid Online or at the Open
House Racehorse Style at

Livestock
Link

Videos will also be online at www.TheLivestockLink.com



LOT 1 — WH 5575 REDEMPTION 42F
CE 3.8 BW 3.4 WW 57 YW 86 M 29 MG 58 CHB\$ 114



LOT 6 — WH 6120 ENCORE 58F
CE -2.0 BW 5.8 WW 67 YW 109 M 29 MG 63 CHB\$ 108



LOT 21 — WH 2504 SENSATION 135F
CE 4.5 BW 1.3 WW 58 YW 88 M 31 MG 60 CHB\$ 110



LOT 22 — WH 738C SLEEP ON 76F
CE 4.4 BW 1.1 WW 66 YW 97 M 26 MG 59 CHB\$ 102

Reese & Elly Jo Wagner | 39365 182nd St. | Redfield, SD | www.wagnerherefords.com
605-450-1085 | 605-450-9790 | info@wagnerherefords.com

EPDs 1/13/19

A History Rooted in Tradition

Matt Beery very much empathizes with those who are more reluctant to step away from strict horned Hereford genetics. As the fifth generation on his family’s ranch, Beery comes from a long line of purebred Hereford breeders.

Matt’s parents, Eddy and Joanne Beery, grew up on ranches that lived and breathed Herefords. Eddy, who passed away roughly five years ago, grew up on the ranch that Matt currently operates.

In the late 1920’s, Eddy’s father emigrated from Iowa, met up with his uncle, and used the only money to his name to purchase two sections of pastureland.

Joanne Beery described how Eddy “started raising the purebred cow in 1957 right when he got out of school.” He invested all of his money in order to start his own Hereford cow-base.

(continued on page 26)

Future Feeders: Cattlemen’s challenge opens new possibilities for South Dakota students

(continued from page 22)

“One of the deficiencies we noticed was there were no young people interested in the cattle feed business,” said Tyler Melroe, South Dakota Cattlemen’s Foundation board member and program director for the challenge. “Very few kids grew up in that environment and it’s an extremely important part to keeping people around.”

The new program comes after the waves the South Dakota Cattlemen’s Foundation’s scholarship program made earlier this year. With the success of the scholarship for young students and the interest in continuing education initiatives in the livestock industry, Melroe and the cattlemen’s foundation decided this fed cattle program could help further the industry’s goals.

Fawcett's

ELMCREEKRANCH

Ree Heights, South Dakota

Annual Production Sale

February 11, 2019

1 p.m. cst • at the ranch, Ree Heights, SD

Please join us for lunch prior to the sale



LOT 1 :: ECR 628 Advance 8014 :: Reg #43965003 :: Horned
February 8, 2018 :: H FHF Advance 628 ET

CED	BW	WW	YW	Milk	M&G	REA	MARB	SCF	Scrotal	BMI\$	CHBS
-5.6	-1.6	58	93	26	55	0.45	0.24	14.9	1.0	342	112



LOT 12 :: ECR 628 Advance 8282 :: Reg #43964996 :: Horned
February 28, 2018 :: H FHF Advance 628 ET

CED	BW	WW	YW	Milk	M&G	REA	MARB	SCF	Scrotal	BMI\$	CHBS
3.7	1.8	60	96	22	52	0.51	0.12	12.5	0.6	298	107



LOT 15 :: ECR TSR 628 Advance 8358 ET :: Reg #43965116 :: Horned
March 9, 2017 :: H FHF Advance 628 ET

CED	BW	WW	YW	Milk	M&G	REA	MARB	SCF	Scrotal	BMI\$	CHBS
5.3	2.7	59	92	21	51	0.40	0.19	13.4	0.8	315	108



LOT 18 :: ECR WF 628 Advance 8940 ET :: Reg #43965028 :: Horned
March 22, 2018 :: H FHF Advance 628 ET

CED	BW	WW	YW	Milk	M&G	REA	MARB	SCF	Scrotal	BMI\$	CHBS
2.0	3.7	63	96	28	60	0.69	0.15	14.4	0.8	350	125



LOT 21 :: ECR 173D Endure 8111 :: Reg #P43971821 :: Polled
February 17, 2018 :: NJW 79Z Z311 Endure 173D ET

CED	BW	WW	YW	Milk	M&G	REA	MARB	SCF	Scrotal	BMI\$	CHBS
5.0	2.9	65	104	34	66	0.50	0.28	18.3	1.1	395	110



LOT X :: ECR Q245 Golden Flow 8210 :: Reg #43972624 :: Horned
February 20, 2018 :: DKF RO Cash Flow 0245 ET

CED	BW	WW	YW	Milk	M&G	REA	MARB	SCF	Scrotal	BMI\$	CHBS
-1.6	4.1	54	83	38	66	0.59	-0.08	16.0	0.9	407	111



LOT 70 :: ECR 3371 Rewards 7413 :: Reg #43854140 :: Horned
March 10, 2017 :: ECR Reward 3371 ET

CED	BW	WW	YW	Milk	M&G	REA	MARB	SCF	Scrotal	BMI\$	CHBS
-0.6	3.4	65	104	27	59	0.58	0.11	14.9	0.8	334	106



LOT 100 :: ECR 418 Rushmore 7583 :: Reg #P43853964 :: Polled
March 27, 2017 :: ECR RO Rushmore 418 ET

CED	BW	WW	YW	Milk	M&G	REA	MARB	SCF	Scrotal	BMI\$	CHBS
3.9	3.2	48	74	26	51	0.34	0.18	17.2	1.4	364	99



LOT 125 :: ECR Resource 7830 ET :: Reg #pending
March 25, 2017 :: SAV Resource 1441

CED	BW	WW	YW	Milk	SW	SF	SG	SB	Marb	REA	Fat
2.0	2.9	76	107	14	40.96	89.27	7.43	102.83	-0.03	0.64	0.01

The Rancher's Kind

SELLING

125 Horned, Polled yearling and 2-year-old
Hereford & Angus bulls

80 F1 black baldy open heifers

To request a sale catalog and to be put on our
mailing list, please call or text 605-870-6172
or email kyla@focusmarketinggroup.net

Fawcett's

ELMCREEKRANCH

Ree Heights, South Dakota

Keith, Cheryl, Matt & Erin

605-870-0161 • 605-943-5664

Robert Fawcett

Dan, Kyla, Hollis, Ivy

605-870-6172

Weston, Kris & Falon

(continued from page 24)

Matt's mother, Joanne, also has a deep rooted love for the Hereford breed. Growing up on a ranch in Plentywood, Montana, Joanne recalls how her love for red and white cattle is in her blood.

"Dad had Herefords as long as I can remember, and so did his folks. I grew up being a Hereford lover," Joanne explained.

Throughout the course of her life, Joanne was an active member in her local 4-H program, and chose Hereford cattle as her project along the way. In fact, that's how Eddy and Joanne met, and sparked a relationship that would turn into 50 years of marriage.

Over the years, Eddy and Joanne worked alongside each other and continued to choose the Hereford breed.

(continued on page 30)



Joanne Beery




SR CCC JAMBALAYA 1404B ET — #43486734
CE 1.1 BW 3.3 WW 43 YW 69 M 30 MG 51 CHB\$ 117



LCC 002 BINGO 329 — #43374268
EPDs 1/13/19 CE 0.4 BW 3.0 WW 55 YW 86 M 24 MG 52 CHB\$ 114

SIDWELL RANCH

Production Sale

MARCH 30, 2019

1:00 PM (Mtn.) • Sidwell Barn • Columbus, MT

Selling:
45 BULLS
5 BRED HEIFERS
5 HEIFER CALVES

SIDWELL RANCH

Richard and Becky Sidwell
Richard: 406-861-4426 c • Becky: 406-670-4227 c
sidwell@sidwell-land.com
Catalogs available online: www.sidwell-land.com

Cut-off for advertising in the March issue is Feb. 5.

FOR SALE BY PRIVATE TREATY

Selling: 30 Two-Year-Old Bulls

plus Registered Hereford Yearling Heifers available in Feb.

Also 20 BWF and Black Yearling Heifers

Call for a catalog or view online at www.HerefordAmerica.com

261E

What a beef bull!
Big bodied, thick
and really deep. Red
all over with some
pigment. Moderate
birth with growth
and high milk. One
of the best here!

BW 3.3 WW 49
YW 87 Milk 29
REA .59

Sire: NJW 69S
100W Trust 158Z



**TOP-QUALITY WORKING CATTLE BRED AND FED
WITH THE COMMERCIAL CATTLEMAN IN MIND.**

For more information contact:

MIDWAY POLLED HEREFORDS

7480 26th St., Sheyenne, ND 58374 • midwayph@gondtc.com
(2.5 miles south and 5.5 miles east of Sheyenne)

Bill and Karen Smith: (701) 996-3300 • cell: (701) 302-0254

Jake and Whitney Burkhardtsmeier:
cell: (701) 650-8906 • home: (701) 996-3600

Doug and Ann Smith: (701) 996-3111

Visitors always welcome.



The Premier Performance Sale **AMDAHL**
ANGUS & HEREFORD

SATURDAY, FEBRUARY 9, 2019

1:00 p.m. (MST) • at the ranch, 12 miles North of Rapid City, SD
150 Hereford and Angus Bulls — Yearlings, Fall and 2-Year-Olds
plus 60 Bred and Open Females

1st year breeding season guarantee!



KB LI Domino 845F ET
Sire: CL I Domino 6104D
Dam: CL I Dominette 2143Z
BW 3.0 WW 54 YW 100 Milk 36
M&G 63 REA .69 Marb -.06
Powerful is the best way to describe 845. He is full of performance and quality any way you look at him.



KB LI Dominette 376 A
Sire: HH Advance 1207Y
MGS: CL I Domino 795T IET
CE 4.9 WW 60 YW 94 Milk 27 REA .38 CHB 114
*One of our favorite females in the Amdahl program.
Her last flush gave us 41 good embryos.*

Feature Donor Cow Selling!



Amdahl Cowboy Up 830
BW 81 lbs. • Adj WW 906 lbs. • YW 1473
CE 6 WW 77 YW 136 Marb .57 HP 11.6
#1 weaning weight bull in the sale out of a powerful cow. He could certainly be the best Cowboy Up son to sell in the 2019 bull sale season.

Visit us online for a catalog.
AMDAHL
ANGUS & HEREFORD
Tim and Marcia Amdahl, J.D. & Annie Amdahl
Tim 605-929-3717 or J.D. 605-999-6487
www.AmdahlAngusandHereford.com

Jim Baker Herefords
Jim 605-381-9519 • www.BakerHerefords.com

We're not just another bull sale, we're the udder bull sale.

RANCH READY BULL SALE

Saturday, March 2, 2019 • At the Ranch, Simmie, Sask.

BR 157B SENSATION 244E



Dam: BR 4W Miss Hart 195Y



Dam: BR 58Y Starlet 49B



BR 155B BATTLE 50E



179Y FLUSH SONS

BR 135C FAMOUS ET 145F

FEB. 4, 2018 BW: 88 205: 706



Dam: BR 24W Standard Lady 179Y



Granddam: DBHR 68J Standard 155S - Dam of 179Y



BR 135C FREELANCE ET 157T

FEB. 7, 2018 BW: 90 205: 662



BR 213B OLD SCHOOL 101F

JAN. 20, 2018 BW: 92 205: 738



Dam of 101F - Daughter of 179Y
BR 15Z Lady ET 168C



SELLING:
32 Yearling Bulls
15 Two-Year-Olds
6 Purebred Open Heifers
25 Commercial
Open Heifers


BRAUN
RANCH

CRAIG & CARRIE BRAUN
Simmie, Sask. • braunranch@gmail.com
H: 306-297-2132 • C: 306-297-7114
DICK & LORRAINE BRAUN

Exchange benefit: \$750 US buys \$1000 Canadian.

For pictures and videos visit us at: WWW.BRAUNRANCH.COM

1/5 HOFFMAN R.A.N.C.H

modern, stout, functional

Annual Bull Sale

FRIDAY, FEBRUARY 15, 2019 / 11:30 AM CST
HOFFMAN SALE FACILITY / THEDFORD, NE

SELLING 400+ BULLS!

200+ HEREFORD / 130+ ANGUS / 65+ SIMANGUS

Yearlings and Coming Two-Year Olds

Also Selling Large Groups of Commercial Females, plus 70 Registered Replacement Heifers (50 Hereford, 20 Angus)



LOT 1 H FHF PILGRIM 8409 ET

#P-43916385



2/12/18
POLLED

CED	BW	WW	YW	MLK	REA	MARB	CHB
-4.0	5.5	78	126	32	0.70	0.10	142

SIRE: CHURCHILL PILGRIM 632D ET
DAM: WLL ZOEY 3Z

LOT 2 H FHF PILGRIM 8441 ET

#P-43916408



2/19/18
POLLED

CED	BW	WW	YW	MLK	REA	MARB	CHB
-3.4	5.0	76	122	32	0.55	0.05	119

SIRE: CHURCHILL PILGRIM 632D ET
DAM: WLL ZOEY 3Z

LOT 3 H PILGRIM 8426 ET

#P-43916400



2/14/18
POLLED

CED	BW	WW	YW	MLK	REA	MARB	CHB
4.6	3.0	64	111	29	0.63	0.19	123

SIRE: CHURCHILL PILGRIM 632D ET
DAM: RST GAT NST Y79D LADY 54B ET

LOT 4 H PILGRIM 8407 ET

#P-43916383



2/11/18
POLLED

CED	BW	WW	YW	MLK	REA	MARB	CHB
-0.5	4.9	68	118	29	0.53	0.07	128

SIRE: CHURCHILL PILGRIM 632D ET
DAM: RST GAT NST Y79D LADY 54B ET

LOT 5 H HOMETOWN 8439 ET

#P-43916406



2/18/18
POLLED

CED	BW	WW	YW	MLK	REA	MARB	CHB
0.5	3.3	67	113	29	0.61	0.02	119

SIRE: NJW 135U 10Y HOMETOWN 27A
DAM: RST GAT NST Y79D LADY 54B ET

LOT 6 H GAT NST COWBOSS 4F ET

#43963537



2/15/18
POLLED

CED	BW	WW	YW	MLK	REA	MARB	CHB
-1.0	4.3	64	107	29	0.78	0.10	137

SIRE: NJW 78P 88X COWBOSS 199B ET
DAM: RST GAT NST Y79D LADY 54B ET

LOT 7 H FHF CATAPULT 8591 ET

#P-43938616



2/6/18
POLLED

CED	BW	WW	YW	MLK	REA	MARB	CHB
0.5	1.2	64	95	28	0.40	0.20	91

SIRE: CRR 109 CATAPULT 322
DAM: FHF 408 RITA 21W

LOT 8 H FHF CATAPULT 8593 ET

#43938618



3/23/18
HORNED

CED	BW	WW	YW	MLK	REA	MARB	CHB
3.3	0.7	61	101	28	0.54	0.12	108

SIRE: CRR 109 CATAPULT 322
DAM: FHF 408 RITA 21W

LOT 9 H FHF CATAPULT 8592 ET

#P-43938617



2/6/18
POLLED

CED	BW	WW	YW	MLK	REA	MARB	CHB
3.3	4.2	67	104	31	0.49	0.31	120

SIRE: CRR 109 CATAPULT 322
DAM: FHF 408 RITA 21W

LOT 10 H KFL SUSTAINABLE 8378 ET

#P-43907620



2/7/18
POLLED

CED	BW	WW	YW	MLK	REA	MARB	CHB
-5.2	5.8	62	95	33	0.57	-0.26	103

SIRE: H WR SUSTAINABLE 5511 ET
DAM: CHURCHILL LADY 527C

LOT 11 H RH BELLE AIR 8464 ET

#P-43915091



3/4/18
POLLED

CED	BW	WW	YW	MLK	REA	MARB	CHB
2.0	2.6	64	98	23	0.39	0.13	101

SIRE: BR BELLE AIR 6011
DAM: BRL ENVY 401A

LOT 13 H CUDA 7934 ET

#P-43857527




8/9/17
POLLED

CED	BW	WW	YW	MLK	REA	MARB	CHB
9.2	0.3	65	107	31	0.85	0.36	141

SIRE: BEHM 100W CUDA 504C
DAM: H MS 5139 ADVANCE 4006 ET

LOT 14 H WMS HOMETOWN 7782 ET

#P-43857495




8/14/17
POLLED

CED	BW	WW	YW	MLK	REA	MARB	CHB
5.5	2.8	64	97	32	0.61	0.18	106

SIRE: NJW 135U 10Y HOMETOWN 27A
DAM: CRR 109 KELLY 303

LOT 15 H GAT NST SENSATION 7968 ET

#P-43896625



9/6/17
POLLED

CED	BW	WW	YW	MLK	REA	MARB	CHB
-2.8	5.3	63	99	28	0.65	0.22	117

SIRE: UPS SENSATION 2296 ET
DAM: RST GAT NST Y79D LADY 54B ET

LOT 43 H BIG RIB 7800 ET

#43857863




8/16/17
HORNED

CED	BW	WW	YW	MLK	REA	MARB	CHB
1.1	3.0	57	86	31	0.61	0.20	125

SIRE: NJW 98S R117 RIBEYE 88X ET
DAM: HH MISS ADVANCE 9228W

LOT 92 XA MR DOMINO 1544 7014 ET

#43821751




1/14/17
HORNED

CED	BW	WW	YW	MLK	REA	MARB	CHB
6.6	2.1	46	77	32	0.21	0.14	79

SIRE: UPS DOMINO 1544
DAM: ECR 7195 DOMINETTE 0038

LOT 115 XA MR DOMINO OUTCROSS 7003 ET

#43821752




1/18/17
HORNED

CED	BW	WW	YW	MLK	REA	MARB	CHB
2.3	3.7	53	88	28	0.37	0.08	101

SIRE: H WR OUTCROSS 225 ET
DAM: ECR 7195 DOMINETTE 0038

LOT 199 H FHF CATAPULT 8590 ET

#P-43938615




2/5/18
POLLED

CED	BW	WW	YW	MLK	REA	MARB	CHB
6.2	0.3	63	98	28	0.45	0.10	96

SIRE: CRR 109 CATAPULT 322
DAM: FHF 408 RITA 21W

LOT 250 HOFFMAN COWBOY UP 7821

#18954637




8/20/17

CED	BW	WW	YW	MLK	REA	MARB	\$B
5	3.0	71	122	14	0.57	0.29	146.61

SIRE: HA COWBOY UP 5405
DAM: SITZ BLACKCAP 342U

LOT 251 HOFFMAN COWBOY UP 7832

#18954634



8/23/17

CED	BW	WW	YW	MLK	REA	MARB	\$B
4	1.9	81	141	17	0.66	0.29	181.15

SIRE: HA COWBOY UP 5405
DAM: SITZ EMMA E 166W

LOT 405 SJW H LOVER BOY 776E

#3435958



9/4/17

CED	BW	WW	YW	MLK	REA	MARB	API	TI
17.1	-1.0	61.1	89.2	16.7	0.40	0.31	128.7	69.1

SIRE: THSF LOVER BOY B33
DAM: WALLACE LASS 071

Request a catalog today!

OFFICE 308.645.2279 | JASON 530.604.5096 | DENNY 406.425.0859
39575 E. Antelope Valley Road | Thedford, NE 69166

HOFFMANRANCH.COM



LiveAuctions.TV

ENGELHAUPT HEREFORDS

Bull Sale

TUESDAY, FEBRUARY 26, 2019

Atkinson Livestock Market // Atkinson, Nebraska // 1 PM // Also broadcast on www.cattleusa.com

Selling **24 BULLS • 10 YEARLING HEIFERS**
Principle Sire: Navarro



For more information contact:

Jack Engelhaupt, 402-775-2588 // or Art Handel, 605-391-8233
engherefords@nntc.net

(continued from page 26)

"How can you not love Hereford cattle?" asked Joanne.

But, over the past several years, the game has been changing, and both Matt and Joanne Beery have come to terms with the idea that their operation has needed to adapt as well. Matt discussed how the commercial industry is "not just rawhide cowboys anymore," and consequently, they have some different things in mind.

That's not to say that this transition hasn't come with some reluctance from the Beerys as they reflect back on the purebred, horned Hereford that put their operation on the map.

"They were horned breeders and by God, that's all that was out there," Beery recalled. "I still have a lot of that in me."

Despite the fact that Beery adamantly believed he would never own a Polled Hereford, he has decided that "we gotta change if we're going to stay in this."

Joanne described how her late husband may have hesitated and "stood back a little" when considering their transition to Polled Herefords, and a more consistent use of the F1 cross. But in the end, Joanne very much believes that as an industry, it's important to be open to change.

"To be successful, you have to be willing to look forward," Joanne stated.

(continued on page 32)

SNOWSHOE
CATTLE COMPANY
 BULL SELECTION DAY

March 16, 2019
 At the Ranch Near
 Pompeys Pillar, MT

45 Hereford Bulls
 Yearlings, 18-Month Olds,
 Two-Year Olds

Producing Carcass Bulls without Sacrificing Maternal Quality and Real-World Performance

Snowshoe has worked for decades to breed bulls that can produce "keeper" females and add dollars to a commercial cattleman's bottom line. Three of the top five bulls leading the carcass traits for the entire Hereford breed stem from our program. Call for a sale catalog today.



Snowshoe Cattle Company
 Bernie, Stacie, Austin & Rachael Buzanowski
 4365 Custer Frontage Rd
 Pompeys Pillar, MT 59064

(406) 855-8288

SnowshoeCattle.com
Designed by AgTown.com

JAMISON HEREFORDS

**SPRING TOTAL PERFORMANCE
BULL SALE**

FRIDAY **FEBRUARY 22, 2019**

200 BULLS
Yearlings & Two Yr. Olds

SINCE 1944 ... 75 Years of
Hereford Breed Leadership!

DVAuction
Broadcasting Real-Time Auctions



A COWMAN'S PROGRAM...

Performance-Bred Line 1 Herefords from Western
Kansas' Big, Hard-Grass, Range Country!

BACKED BY THE JAMISON GUARANTEE!
...Volume Selection ...Nationwide Delivery!



7833

Sire: DH Domino 031

CED 2.0 BW 3.0 WW 50 YW 80 MILK 21 M&G 46
Carcass: REA .40 MARB .01 \$CHB 106



852

Sire: CL1 Domino 6187D

CED 6.2 BW 2.7 WW 66 YW 107 MILK 27 M&G 60
Carcass: REA .36 MARB .19 \$CHB 96



F07

Sire: CL1 Domino 6187D

CED 6.0 BW 2.4 WW 61 YW 97 MILK 27 M&G 57
Carcass: REA .42 MARB .25 \$CHB 98



818

Sire: HH Advance 3297A

CED 2.7 BW 3.1 WW 63 YW 104 MILK 34 M&G 65
Carcass: REA .58 MARB .12 \$CHB 117



7214

Sire: HH Advance 4082B

CED 0.8 BW 3.6 WW 52 YW 91 MILK 23 M&G 50
Carcass: REA .35 MARB -.05 \$CHB 104



7419

Sire: HH Advance 2181Z

CED 2.7 BW 3.0 WW 58 YW 90 MILK 17 M&G 46
Carcass: REA .33 MARB .04 \$CHB 101



7832

Sire: DH Domino 031

CED 2.0 BW 3.7 WW 54 YW 86 MILK 20 M&G 48
Carcass: REA .48 MARB -.01 \$CHB 105



7919

Sire: CL1 Domino 386A

CED 4.1 BW 2.5 WW 53 YW 80 MILK 29 M&G 56
Carcass: REA .49 MARB .03 \$CHB 98



752

Sire: HH Advance 3040A

CED 2.0 BW 4.1 WW 49 YW 79 MILK 23 M&G 47
Carcass: REA .18 MARB .02 \$CHB 103

Online Sale Catalog & Sale Cattle Videos...
www.jamisonranch.com

**GORDON JAMISON
& SONS 785/299-0441**

2271 County Rd. 74
Quinter, Kansas 67752

UNITED LIVESTOCK BROKERS, INC.
Jay George 605/391-6230 • Lebo, KS

(continued from page 30)

Seeing the Benefits

The Beery operation is anything but standard, straightforward, or traditional. Their day-to-day work, along with the livestock they're producing, is entirely diversified. Cattle of any color can be found at their place as Matt does custom feeding for clients while also

backgrounding heifers. On top of this, Matt and his family continue to cater to the purebred Hereford market.

But, Matt isn't offended that some of these clients aren't ready to add Herefords into their program just yet. He's committed to produc-



Beery herd bulls 101Z and 85Z.



Matt Beery

ing quality cattle so that when they look across the fence at his Herefords, they'll see a change they need to make.

"There are so many positive traits of the Hereford breed to capitalize on: their longevity, do-ability, fleshing ability, and docility," Matt explained.

Most importantly choosing the Hereford breed, Matt believes, gives you bulls that last longer, and cows whose structure allows them to travel and grow a good calf through rough terrain and weather. In the end, this saves the producer, and the customer, money by reducing feed costs on high turnover cattle.

"These are traits that you are going to see in your pocketbook," Matt explained.

Further, he genuinely believes that all of these positive qualities seen in the Hereford breed can be complimented and enhanced by crossbreeding.

Each year Matt's hired hand, Madri Blom, who he describes as "the true herdsman of this program," runs a very successful and aggressive purebred Hereford AI regimen. Their mentality is to generate contemporary groups that truly prove their genetics.

"We can't prove anything by not breeding enough volume," Matt stated.

This past year, Madri AI'd 170 cows

(continued on page 34)

THORSON HEREFORDS

QUINN, SOUTH DAKOTA

Doug & Nancy Thorson
(605) 859-3538

22750 Cottonwood Rd., Quinn, SD 57775

Annual Production Sale

Tuesday,
February 12, 2019

1 PM • Philip Livestock
Philip, SD

Contact us for a catalog.

35 Coming 2-year-old bulls • 35 Registered Hereford heifer calves • 30 Commercial heifer calves
25 Commercial Hereford heifers & 50 BWF heifer calves from the Neuhauser Ranch
20 BWF heifer calves from the Redding ranch

All heifers are bangs vaccinated, top quality and ready to go.



TH L1 Domino 7010 • 43802475 • 4/8/17
Sire: BT L1 DOMINO 3305A
BW 4.4 WW 42 YW 78 M 23 M&G 44 REA .29



TH L1 Domino 7229 • 43802529 • 4/19/17
Sire: BT L1 DOMINO 3305A
BW 2.7 WW 43 YW 71 M 23 M&G 45 REA .32



TH L1 Domino 7304 • 43802552 • 3/29/17
Sire: BT L1 DOMINO 3305A
BW 2.6 WW 41 YW 71 M 29 M&G 50 REA .24

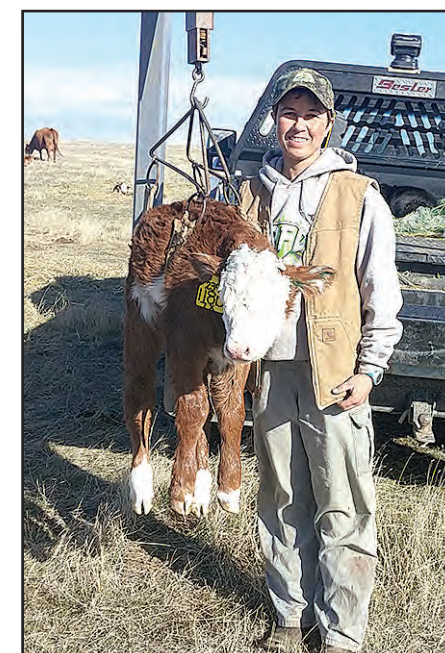


TH L1 Domino 7454 • 43802635 • 4/18/17
Sire: BT L1 DOMINO 3305A
BW 3.2 WW 43 YW 72 M 27 M&G 49 REA .32

EPDs: 1/10/19



Visit us on Facebook or at: www.ThorsonHerefords.com



Madri Blom tagging and weighing a calf.



**POLLED
HEREFORDS**

46th ANNUAL PRODUCTION SALE

AT THE RANCH LOCATED
EIGHT MILES NORTH AND
ONE MILE WEST OF
GUIDE ROCK, NEBRASKA

TUESDAY, MARCH 5, 2019 AT 1:00 P.M. CST

View Our Online Sale Catalog At: www.schutteandsons.net

Birth Weight	80
adj. 205	613
adj. 365	1079
BW EPD	2.0
WW EPD	55
YW EPD	90
MM EPD	22
M&G EPD	50
FAT EPD	0.046
REA EPD	0.46
MARB EPD	-0.04



S&S KICKSTART 23E P43789434 • 3/19/17

A Kickstart son that is as good as he looks in his picture.

Birth Weight	84
adj. 205	746
adj. 365	1254
BW EPD	5.1
WW EPD	75
YW EPD	118
MM EPD	30
M&G EPD	67
FAT EPD	0.076
REA EPD	0.79
MARB EPD	0.03



S&S SOLUTION 10E P43789421 • 3/15/17

He's attractive and powerful and really good anyway you look at him.

Birth Weight	88
adj. 205	652
adj. 365	-
BW EPD	3.0
WW EPD	56
YW EPD	98
MM EPD	26
M&G EPD	54
FAT EPD	0.056
REA EPD	0.64
MARB EPD	0.09



S&S STUD 39F P43939559 • 3/23/18

The Churchill Stud cattle have been very good in our herd. Check out this great calf.

Birth Weight	80
adj. 205	717
adj. 365	-
BW EPD	2.0
WW EPD	57
YW EPD	89
MM EPD	27
M&G EPD	56
FAT EPD	0.036
REA EPD	0.40
MARB EPD	0.23



S&S HOMEWARD 52F P43941537 • 3/27/18

He's out of Homeward and a 434V cow. A real good calf with a solid pedigree.

Birth Weight	72
adj. 205	576
adj. 365	849
BW EPD	1.9
WW EPD	46
YW EPD	73
MM EPD	24
M&G EPD	47
FAT EPD	0.046
REA EPD	0.30
MARB EPD	0.10



S&S MISS REAL 444E P43811847 • 3/20/17

A beautiful Buckeye heifer bred to a Kickstart son.

Birth Weight	78
adj. 205	568
adj. 365	863
BW EPD	3.4
WW EPD	66
YW EPD	94
MM EPD	23
M&G EPD	56
FAT EPD	-0.054
REA EPD	0.78
MARB EPD	-0.09



S&S MISS REAL 470E P43811829 • 3/30/17

She's by the ever popular BBH Asset 337A and bred AI to Kickstart.

- **4 YEARLING HERD BULL PROSPECTS**
- **36 POWERFUL BEEF BUSINESS 2YR OLDS. THESE BULLS ARE BRED FOR CALVING EASE, GROWTH, AND CARCASS MERIT. THEY RUN ON GRASS AND ARE TOUGH ENOUGH TO BREED LOTS OF COWS.**
- **28 BRED HEIFERS. TWELVE ARE CHECKED SAFE TO KICKSTART, PROVIDENT AND SOLUTION. THE REMAINDER ARE BRED TO SONS OF KICKSTART, LEADER OR KJ VINCENT.**

SCHUTTE & SONS

Ron and Nancy Schutte

1417 Road 2100, Guide Rock, NE 68942

Phone: (402) 756-3462

Cell Phone: (402) 746-4378

E-mail: rnschutte@gtmc.net

This sale will be broadcast live on the internet

DVAuction
Broadcasting Real-Time Auctions
www.dvauction.com
Real time bidding & proxy bidding available



Polled Herefords are a part of the Beery breeding program due to customer demand. They have adjusted to their customer's needs and interests.

Beery...

(cont. from page 32)

and 150 yearling heifers with a conception rate of roughly 85%. Matt credits her success to the fact that Madri actually lives with the cattle, which has allowed her to more accurately time their breeding cycles.

For the approximately 15% that don't take, they'll use a Red Angus cleanup bull on their next cycle. While one might believe that these



Krista, Ethan and Matt at parents' night at one of Ethan's football games.

second cycle calves would fall behind in growth to their first cycle, AI bred contemporaries, that just hasn't been the case for the Beerys.

"We add pounds to the second cycle and add some good, popping calves to our commercial pen. We don't lose those calves out of our registered side. We gain more quality in our commercial pens," Matt stated.

Matt also works with heterosis in his steer program. He explained that by not working with the Red Angus-Hereford cross in the past, "We were giving up a lot of performance and pounds, and the F1 Baldies have worked really well for us."

Most importantly though, Matt explained how crossbreeding will "make the commercial man more profitable."

Now, the polled side of the industry hasn't been as easy for the Beerys to transition to.

"I'm not too keen on the polled genetics," Beery stated.

But, they've adjusted their operation with their customers' needs and interests in mind. In order to make this work, Beery described how they essentially run three different cowherds: horned, polled, and registered Red Angus. Matt explained that the necessity for the compartmentalization of his herds

(continued on page 36)

The Region's Red Angus & Polled Hereford Performance Leader!

Olson's *Red Power* Performance Bull & Female Sale

At the ranch ~ Argusville, ND ~ Noon meal ~ 1:00 Sale

View
videos
online

Thursday

Feb. 21, 2019

Thursday

20 Hereford Bulls - 45 Red Angus Bulls
10 Hereford Heifers - 15 Red Angus Heifers
Select group of Bred Hereford & Red Angus Females

100 Head sell!
Bonus for this year,
bred females!

Powerful Red Angus Bulls!



Excellent Yearling Bulls!



High Quality 2017 Born Bulls!



Our offering of Hereford bulls includes 7 high quality coming 2-year-olds, 4 fall bulls & top end yearlings. Sires include: Caretaker, Cooperstown, Leader, 27A, Homegrown, Double Your Miles, Homestretch, Belle Air, Advance & Right On!. The heifers are top notch and backed by predictable cow families & balanced trait sires! Many could show!

Call for Catalog:

OLSON Hereford Ranch

16068 24th St SE - Argusville, ND 58005

Carl 701-361-0684, Edward 701-238-3601, olsoncandc@aol.com

www.olsonredpower.com

Breeding High Quality Registered Cattle Since 1936!



Matt and daughter Leah.

ADE
POLLED HEREFORDS
Top Cattle For Tomorrow's Future

President's Day Spectacular

Monday, February 18, 2019

1:00 p.m. • At the ranch near Amsterdam, MO

Selling 60 Bulls: 2-year-olds, fall yearlings and spring yearlings
15 registered fall bred heifers • 15 registered spring yearling heifers



Look at these heifers!



E101



E102



E103



APH RED DAWN E100ET

ILR RED POWER 456B by NJW

P606 72N DAYDREAM 73S

Service sire on our fall bred heifers

CED	BW	WW	YW	M
5.8	0.0	48	80	35

CW	REA	MRB	CHB\$
70	0.81	0.06	121

Look at these three full brothers!

NJW 135U 10Y HOMETOWN 27A by NJW P606 72N DAYDREAM 73S

CED	BW	WW	YW	M	CW	REA	MRB	CHB\$
3.3	2.0	54	89	38	71	0.74	0.08	113

Our bull and cow battery consist of cattle we have purchased from the top Hereford breeders in the country.

- Linton Polled Herefords (purchased entire herd fall of 2017)
- Knoll Crest Farms
- Churchill Cattle Co.
- NJW Polled Herefords
- Greives Herefords
- Ellis Farms
- Boyd Beef Cattle and Matheny Herefords
- Delaney/Atkins
- Lorenzen
- Barber Ranch

Our program is focused on performance cattle that meet the demand for growth and profitability for commercial and registered programs.

SELLING SONS & DAUGHTERS OF:

HYALITE RESOURCE 331 - leased to Select Sires
EFBEEF X651 TESTED D876 - Full brother to Validated
NJW 98S R117 RIBEYE 88X
CRR 719 CATAPULT 109
MSU TCF REVOLUTION 4R
REMITALL ONLINE 122L

Videos of sale
cattle online.

This sale will be broadcast live on the internet.
DVAuction
Broadcasting Real-Time Auctions
Real time bidding & proxy bidding available.

Sale Managed by:
Justin B. Stout
(913) 645-5136
Jbs5356@hotmail.com

ADE
POLLED HEREFORDS

John and Karen Ade • (765) 583-4875
info@adepolledherefords.com
Cord Lane-Herdsman • (913) 285-2461
CordLane908344@gmail.com
www.adepolledherefords.com

(continued from page 34)

stems from the fact that his polled cattle require an “entirely different breeding scheme than our horned genetics.”

While this may be added work for Matt and his family, they see it as necessary step in order for the Hereford breed to step up to the plate and “claim our market share.”

In the end, Matt Beery believes that “we’re dealing in a whole different time right now” where the Hereford breed has the opportunity to make a competitive move in the market, and situate itself right behind Certified Angus Beef.

“We’ve gotta make sure we’re second in line, and that’s going to come from the heterosis side of things,” Matt described.

Beery also added that the Hereford breed has another opportunity to solidify

its place in the beef industry by allowing for diversity on a larger scale.

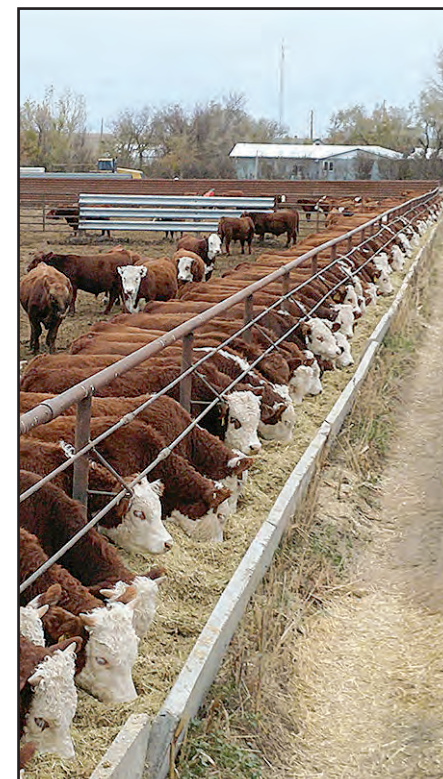
“We need to start from the top down,” Matt explained, by allowing “percentage” cattle to be registered through the AHA.

These “outlier” cattle would be categorized through the database, so it would still allow for the prestige of the purebred Hereford.

“You start registering percentage cattle, and it opens up an entirely new revenue opportunity, and you’re still going to have your purity,” described Matt.

All in all, with a willingness to put aside personal preferences and cater to the desires of the customer, Matt Beery believes that “the commercial man is gonna put their faith in [Hereford] genetics.”

For more information on Beery’s Land and Livestock, visit their website: www.beeryherefords.com



Photos by Madri Blom

BRED FEMALES FOR SALE

**Hereford Heifers, A.I. bred for late February.
Bull bred for March, April and May.**

MELCHER
HEREFORDS, INC.

For more information:

Don & Jean • Matthew & Kristen • Kevin & Sherry
86287 Voyager Rd., Page, NE
Home: 402-626-7994 • Don: 402-336-7194
Kevin: 402-340-6189 • Matt: 402-336-8182
www.melcherherefords.com

McIver Bull Selection Day

Saturday March 2, 2019

at the Ranch, Farwell, Minn.

50 Polled Hereford & Salers Bulls



Yearling Bulls • Fall Yearlings • Two-Year-Old Bulls

**Bulls priced with
Good...Better...Best Format**

- Cattle viewing from 11 am to 2 pm
- Lunch at Noon
- Bids close and tie bid-off at 2 pm
- \$50 discount/bull if picked up within two weeks
- Semen tested and guaranteed
- Yearlings & 2-year-old bulls

Selection Day Bull Terms

Pay half down sale day – pay the other half when you pick up the bull in the spring. Call David or Scott for details.



Remitall-W Dream On 42D



Remitall West Moondance 40B

**Dream On & Moondance
Progeny Sell**

**Also Selling a Small
Selection of Select Females**

Storm Date: Monday, March 4




J.R. Adcock – Sale Manager
(785) 547-6781 • bittersweetwest@rainbowtel.net



David (320) 232-7277
Scott (320) 766-0415

David, Maryln & Scott McIver
15624 340th Ave., Farwell, MN 56327
(320) 283-5776

www.mcivershappyacres.net
email: mcivers@runestone.net

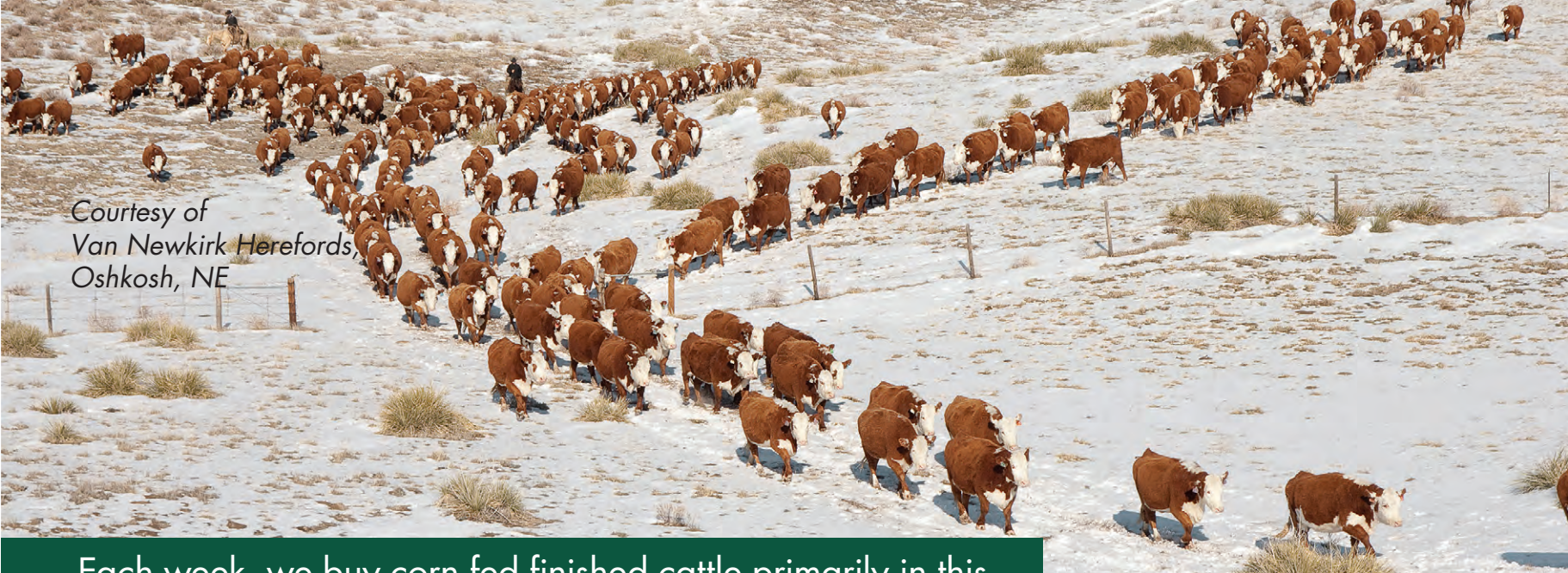


GREATER
OMAHA

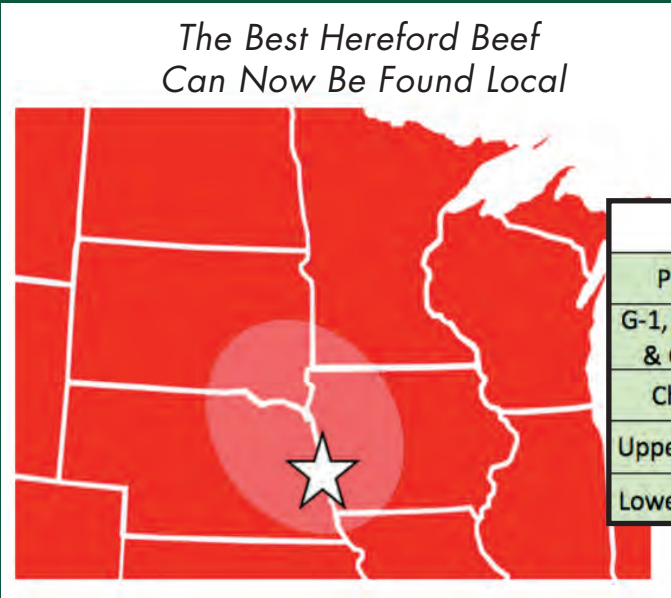
PROVIDING THE HIGHEST QUALITY BEEF

- 11 consecutive growth years in pounds sold and carcasses certified
- More pounds per capita of Hereford Beef is sold in this region (retail and restaurants) than anywhere else in the US. Go local.

Courtesy of
Van Newkirk Herefords,
Oshkosh, NE



Each week, we buy corn fed finished cattle primarily in this region. However, we reach beyond the strike zone to find the best Herefords wherever they might be fed in the Midwest. Even after we’ve concluded our normal weekly trade, we are never too full for Herefords and Baldies. We are always in the market to buy finished Herefords and we offer a premium per head for Hereford program qualifiers. If you’d like your finished calves in our Hereford program, we can introduce you to partner feed yards who custom feed or who buy Hereford and Baldie calves. Whether you want to market your feeder calves or retain ownership, let us help you direct your load lot Hereford influenced feeder cattle into our primary trade area.



G.O. HEREFORD GRID
for ENGLISH CATTLE ONLY

Majority white faced requirement. Eligible cattle groups to be sold on this grid must appear phenotypically to be of Hereford and or Hereford Cross English breed type with over half of each lot displaying predominant white faces on the steers and heifers as are consistent with Hereford F1 English crossbred breeding.

	1 YG	2 YG	3 YG	4 YG	5 YG
Prime	35	30	25	15	10
G-1, G103A, & G-103	15	10	5	4	2
Choice	5	3	Par	-7	-15
Upper Select	3	2	0	-4	-7
Lower Select	0	-5	-10	-15	-20

*Only one premium or discount shall be applied to each carcass

*Dark cutters/Standard Grade/No roll and +30 Month carcasses will be discounted -20 and will not qualify for any premiums

*Carcasses 1051 lbs or Heavier will be discounted -10 and will not qualify for any premiums

*Carcass Data can be requested at time of sale for an additional \$6 per head

Please Contact:

Brad Ellefson (Hereford Feeder Cattle Coordinator).....(605) 216-6010

For All Other Inquiries Contact:

Head Finished Cattle Buyer

Chris Peterson
(402) 380-9616

Cattle Buyer

David Grant
(507) 220-0192

Cattle Buyer

Matt Bode
(402) 580-4605



www.harrellherefordranch.com

HARRELL

**COMMERCIAL
BEEF INDUSTRY DRIVEN!**

Hereford
A PERFORMANCE STANDARD.

**Performance Cattle
from the High Country
of Eastern Oregon**

FALL BRED COWS
...Standout Young H5 Program Females!

The Northwest's #1 Maternal Cowherd ...Our reputation starts here!



643 
Sire: GB L1 DOMINO 177R
CED 1.1 BW 3.9 WW 64 YW 97 MILK 27 M&G 59
REA .43 MARB .09 \$CHB 100

40th ANNUAL SALE
MONDAY MARCH 4, 2019
AT THE RANCH

160 POWERFUL BULLS
110 Yearlings & 50 Two Yr. Olds
35 H5 REPLACEMENT HEIFERS
10 ELITE FALL BRED COWS
45 H5 COMM'L HEIFERS
Quality & Performance ...HHR Reg. Cowherd
20 QUARTER HORSES
Harrell-Mackenzie Performance-Bred
Ranch & Arena Prospects



LiveAuctions.TV

**THE WESTERN
GENETICS SALE EVENT**
Historic Baker City, Oregon

3 BIG DAYS!

Performance Horse Preview, Mar. 3
Harrell Herefords &
Harrell-Mackenzie Horses, Mar. 4
Thomas Angus Sale, Mar. 5
350 Bulls • 150 Females
1st Class Quarter Horses



HARRELL
HEREFORD RANCH

Bob, Jr. 541/523-4322 • Don Schafer 541/403-0008
Ranch 541/523-4401
42590 Salmon Creek Rd. • Baker City, OR 97814



UNITED LIVESTOCK BROKERS, INC.
Jay George 605/391-6230 • Lebo, Kansas

SALE FEATURE...

35 H5 REPLACEMENT HEIFERS!

...Herd Building Quality, Class, Genetics, Phenotype!

Sale Cattle
EPDs Current:
Jan. 7, 2019

893 
Sire: H5 3114 ADVANCE 6159
CED 5.5 BW 2.0 WW 58
YW 95 MILK 27 M&G 56
REA .51 MARB .16 \$CHB 104

8330 
Sire: HH Advance 5019C
CED 0.6 BW 3.7 WW 57
YW 90 MILK 25 M&G 54
REA .32 MARB .22 \$CHB 97

8371 
Sire: H5 0011 ADVANCE 3114
CED 10.8 BW 1.5 WW 56
YW 88 MILK 24 M&G 52
REA .59 MARB .19 \$CHB 118

8333 
Sire: H5 161 ADVANCE 3178
CED 2.4 BW 3.3 WW 54
YW 95 MILK 28 M&G 55
REA .44 MARB .25 \$CHB 106

The Ranchers' & Breeders' Herd Bull Source!



8193 Sire — CL1 Domino 6128D
CED 5.5 BW 4.2 WW 70 YW 112 MILK 30 M&G 65
CARCASS: REA .76 MARB .12 \$CHB 127



DAM...
H5 Ms 408 Domet 0210
• ET Donor ...a role
model Hereford matron!
• Harland x H5 9126
Domino 465 • Two
generation "Dam of
Distinction" cow line
• 5 clvs. / WR 100



883 Sire — H5 9131 Domino 2185
CED 11.0 BW 0.1 WW 53 YW 86 MILK 33 M&G 59
CARCASS: REA .56 MARB .24 \$CHB 116



DAM...
H5 Ms 7100 Domet 249
• H5 408 Domino 7100
(Harland) x HH Advance
8203U
• 5 clvs. / WR 102

Powerful, Proven, Total Program Genetics...



8213 Sire — CL1 Domino 6128D
CED 11.1 BW 2.5 WW 70 YW 116 MILK 30 M&G 65
CARCASS: REA .48 MARB .26 \$CHB 120
DAM 0210 ...Harland ET Donor dam, bulls 8213 & 8193 (see LH pg.)



889 Sire — LJS Mark Domino 0945
CED 12.1 BW 1.0 WW 57 YW 86 MILK 31 M&G 54
CARCASS: REA .67 MARB .45 \$CHB 122
DAM ...H5 9131 Domino 2185 dgtr. • 3 clvs. / WR 103

H5

HARRELL BRED BULLS...

Affordable Sire Power for Progressive Cowmen!

- Nationwide Free Delivery
- 1st Breeding Season Guarantee
- Whole Herd GE-EPD Tested
- Volume Selection Yearlings & Two Yr. Olds

COMMERCIAL INDUSTRY VALIDATED...

HHR Comm'l Baldie Cowherd • 7500 Cattle Fed
21 Years Branded Program Data



8309 Sire — H5 10Y Domino 5186
CED 4.5 BW 4.1 WW 61 YW 101 MILK 30 M&G 60
CARCASS: REA .43 MARB .04 \$CHB 117
DAM 9201 ..."DOD" ET Donor dam, bulls 8309, 8182 (pict'd left pg.)



8182 Sire — H5 10Y Domino 5186
CED 4.1 BW 2.8 WW 49 YW 85 MILK 30 M&G 54
CARCASS: REA .26 MARB .14 \$CHB 106



807 Sire — First Rate
CED 4.6 BW 4.7 WW 62 YW 107 MILK 36 M&G 67
CARCASS: REA .61 MARB .19 \$CHB 132



891 Sire — HH Advance 5019C
CED 3.5 BW 3.8 WW 69 YW 116 MILK 27 M&G 61
CARCASS: REA .83 MARB .24 \$CHB 142

DAM...(not pict'd)
H5 Ms 7056 Advance 9201
• "Dam of Distinction"
• HH Advance 7056T dgtr.
• 6 clvs. / WR 105

GRANDDAM...(pict'd)
H5 Ms 9126 Domet 6130
• "Dam of Distinction" • CL1 Domino 9126J dgtr. • 10 clvs. / WR 104

DAM...
H5 2185 Domet 6154
• H5 9131 Domino 2185 x
H5 9126 Domino 465
• Headline first calf heifer
...Milk 37, CHB 122
• 1st calf / WR 110

DAM...(not pict'd)
H5 Ms 3155 Advance 5204
• H5 0011 Advance 3155
dgtr. (HH Advance 0011X)
• 2 clvs. / WR 103

GRANDDAM...(pict'd)
H5 Ms 408 Domet 234
• Harland x H5 501 Domino 001 • "Herd bull"
cow ...dam, herdsire H5 1147 Advance 432 • 3 clvs. / WR 104



809 Sire — UPS Domino 3027
CED 3.4 BW 2.3 WW 54 YW 81 MILK 41 M&G 68
CARCASS: REA .21 MARB .24 \$CHB 94



8250 Sire — First Rate
CED 12.7 BW 1.1 WW 60 YW 93 MILK 31 M&G 61
CARCASS: REA .34 MARB .19 \$CHB 96



8217 Sire — HH Advance 5019C
CED 3.3 BW 3.3 WW 70 YW 120 MILK 29 M&G 64
CARCASS: REA .47 MARB .32 \$CHB 113
DAM ...H5 9027 Advance 161 dgtr. • Stacks five H5 "Herd Bull" dams
• 2 clvs. / WR 112

DAM...
H5 Ms 8Y Homegrown
6123 • NJW Homegrown
8Y x H5 4055 Advance
1147
• 1st calf / WR 115

DAM...
H5 Ms 432 Advance 647
• H5 1147 Advance 432 dgtr.
(H5 4055 Advance 1147)
• Two generation ET Donor
cow line ...H5 410, H5 498
• 1st calf / WR 107

H5

Powerful Genetics ...Profitable Choices ...Your Genetics Partner!

www.harrellherefordranch.com
(C) 541/403-2210 (H) 541/523-4322

Real Performance...Real Beef Cattle...Building Cowherds...Premium Grid Value!

NATIONAL WESTERN[®] Stock Show

Denver, CO • Junior Show • January 16, 2019 • Judge: Todd Herman • 195 Head



Grand Champion Polled Female — Cory, Logan and Lucas Stumpf, Columbia, IL, with GEN-LOR Reba E14. She is a March 25, 2017, daughter of Star SJS Dom Perignon 24Z ET



Grand Champion Horned Female — B&C Ms Mighty 8017F, exhibited by Blayke Breeding, Miami, TX. The April 1, 2018, female is a daughter of NJW 79Z 22Z Mighty 49C ET.



Reserve Champion Polled Female — Beau Ann Graves, Chillicothe, MO with T/R Elsie E118 ET, March 5, 2017, by CRR 719 Catapult 109.



Reserve Champion Horned Female — JCS Miss Buttercup 7296, was exhibited by Kynsleigh and Sage Krebs, Gordon, NE. The female is an April 15, 2017 daughter of JCS 88X 5847 ET.



National Junior Show Wrapup

Members of the National Junior Hereford Association (NJHA) claimed top honors at the National Western Stock Show (NWSS) Junior Hereford Show Jan. 16 in Denver.

Todd Herman, Lima, OH, judged the 195-head show in the Stadium Arena at the NWSS.

Cory, Logan and Lucas Stumpf, Columbia, IL, exhibited the Grand Champion Polled Female, GEN-LOR Reba E14. She is a March 25, 2017, daughter of Star SJS Dom Perignon 24Z ET and was first named champion spring yearling female. The Reserve Champion Polled Female, T/R Elsie E118 ET, was exhibited by Beau Ann Graves, Chillicothe, MO. The March 5, 2017, daughter of CRR 719 Catapult 109 also came out of the spring yearling division.

The Grand Champion Horned Female, B&C Ms Mighty 8017F, was exhibited by Blayke Breeding, Miami, TX. The April 1, 2018, female is a daughter of NJW 79Z 22Z Mighty 49C ET and first won the spring heifer calf division. The Reserve Champion Horned Female, JCS Miss Buttercup 7296, was exhibited by Kynsleigh and Sage Krebs, Gordon, NE, and is an April 15, 2017, daughter of JCS 88X 5847 ET. She was first named champion spring yearling female.

"It doesn't get any better than what I just witnessed and what I was able to do," Herman remarked.

"To pick those four champions between the two shows like I just did was absolutely incredible."



Todd Herman, Lima, OH was the judge for the Junior Hereford show.



59th Annual Bull and Female Sale

Monday, March 11, 2019

DVAuction
Broadcasting Real-Time Auctions

1:00 p.m. CST at the Farm,
located near Burchard, NE

**Selling: 40 Polled Hereford Bulls and
35 Bred and Open Females**

Bulls are mostly Homozygous polled, and carcass data available sale day. Females in the sale come from the heart of the herd. Previous sale heifers have gone on to make donor cows in several herds.



CT NIGHT TIME 24F

CE -2.9 BW 3.3 WW 52 YW 87 M 29 TEAT 1.20 REA .47 MRB .11 CHB\$ 101
Calved: Feb. 18, 2018 — REALTIME x HOMEGROWN 8Y



CT PERFECT 55F ET

CE 7.7 BW 1.4 WW 65 YW 95 M 24 TEAT 1.40 REA .51 MRB .24 CHB\$ 107
Calved: March 8, 2018 — KCF BENNETT PROVIDENT x LOEWEN 66X



UCG 4123 14B REATA 10E ET

CE 3.4 BW 2.0 WW 47 YW 82 M 30 TEAT 1.40 REA .42 MRB .19 CHB\$ 109
Calved: Feb. 27, 2017 — C KLC R98 MILES x HOMETOWN 10Y
Bred to Loewen MHF 6X Anodyne D75 ET



CT MISS LEADER 131D

CE 5.8 BW 1.3 WW 48 YW 90 M 19 TEAT 1.10 REA .34 MRB .13 CHB\$ 120
Calved: Sept. 5, 2016 — R LEADER x LJR MARIAS
Bred to Mohican THM Excede



CT MISS RIGHT ON 132D

CE 3.4 BW 2.8 WW 58 YW 91 M 18 TEAT 1.10 REA .26 MRB -.08 CHB\$ 99
Calved: Sept. 13, 2016 — LOEWEN RIGHT ON x BAR JZ DEVO
Bred to Validated



BR HUTTON 4030ET {DLF,HYF,IEF}

Selling four (4) conventional embryos from Hutton and C&L Miss Junior 408 1T, the dam of the popular C&L CT Federal 485T 6Y herd bull. Hutton is becoming one of the best sires ever used at Barber Ranch and his semen commanded a \$500/straw at the Barber Ranch Frozen Genetics Sale.

EPDs 1/10/19

Excellence in Polled Genetics

TEGTMEIER POLLED HEREFORDS



Russ Tegtmeier
71556 609 Ave., Burchard, NE 68323
(402) 865-5805
Cell: (402) 335-0470
(402) 865-5915 Fax
rtegtmeier@diodecom.net
www.tegtmeierpolledherefords.com

VIDEOS AND MORE PICTURES AT TEGTMEIERPOLLEDHEREFORDS.COM

NATIONAL WESTERN[®] Stock Show

Denver, CO • Female Shows • January 18, 2019 • Judges: Charlie and Blake Boyd



Grand Champion Polled Female — Ned and Jan Ward and Pablo Herrera, Sheridan, WY with NJW 36A 10W Turquoise 23E ET, 1/29/17 by LJR 023R Whitmore 10W.



Grand Champion Horned Female — BK Enchanted Points 7038E, 9/14/17 by CRR 719 Catapult 109 owned by Moore Cattle Co., Madill, OR.



Reserve Champion Polled Female — SC Nova 04E ET by AH JDH Cracker Jack 26U ET owned by Bentley London, Collinsville, TX.



Reserve Champion Horned Female — Lillies Spice, 7/3/17 by H/TSR/CHEZ/Full Throttle ET owned by Lillie Skiles, Hereford, TX.



Champion Cow/Calf — Perez Cattle Co., Nara Visa, NM.



The Perez Crew displaying their championship banners for Champion Polled Cow/Calf, Best Six Head and Get of Sire.



Grand Champion Pen of 3 Heifers
Perez Cattle Co., Nara Visa, NM.
The group was sired by NJW 79Z 22Z
Mighty 49C ET and posted an average
weight of 1,383 lbs. with a 2.01 WDA.

Reserve Champion Pen of 3 Heifers
Krebs Cattle Co., Gordon, NE. These
heifers were sired by Churchill Kickstart
501C with an average weight of 942 lbs.
and a WDA of 2.71.

Scasta Named NWSS Hereford Herdsman of the Year

Matt Scasta, Madill, OK, was honored as the 2019 Hereford Herdsman of the Year at the National Hereford Show (NWSS) during the National Western Stock Show. After votes were cast by fellow Hereford herdsman and breeders, the award was announced prior to the selection of the Grand Champion Polled Hereford Female on Jan. 19.

Originally from Bryan, TX, Scasta began working full time for Buck Cattle Co. after high school. As the current show and sale cattle manager, Scasta plays a role in everything from preparing show cattle to breeding to construction and mechanic work on the ranch. Buck Cattle Co. owner Jirl Buck said Scasta has a true passion for the business with a work ethic that is second-to-none.

"Matt's goal in life is to be successful," Buck said. "He enjoys the cattle, he wants to be successful in the showing and he loves the production side of it. He is a great cowman and he is very talented."

Scasta has been instrumental to the success of Buck Cattle Co. and has worked on almost 90 Grand or Reserve Champions at national shows. He stressed his success is due to a great crew and to the support of his wife and two boys while on the road. He said working in the industry for 22 years — and with the Hereford breed for the past 8 years — has been an awesome experience.

As for being named Herdsman of the Year, Scasta said, "It's truly an honor, especially with all the other amazing candidates that were nominated. I feel part of the Hereford family now."

VIN-MAR CATTLE CO

Registered Angus & Hereford

*New Sale
Location!*

*Annual Bull Sale on
February 22, 2019
at the RANCH near Clinton NE*



OFFERING:
75 Yearling Angus Bulls
25 - 18 Month Old Hereford Bulls

Angus Bulls Sired by:
FAR Long Range
Connealy Armory
Stevenson Templeton
S A V Resource
Connealy Jameson
Vin-Mar O'Reilly Factor

Hereford Bulls Sired by:
TH Pioneer
CRR Screenshot
C Blackhawk Down
Boyd Masterpiece

WWW.VINMARCATTLE.NET

Owner/Manager: Vince Bickel (308) 282-0416 or (308) 360-0336
vmbickel@gpcom.net • Gordon, NE

All bull videos will be available on **THELIVESTOCKLINK.COM**

Online bidding hosted by: **the Livestock Link**

Minnesota Hereford Breeders Weekend, Sale and Awards

December 7th and 8th, 2018 • Hutchinson, MN



Pete Atkins, AHA president, speaking at the annual Minnesota Hereford Breeders banquet.



MHB President Kent Heins playing a game with the directors hat.



Robert Isaacson
Minnesota Hereford Breeders
Hall of Fame



Jim Griffnow
Minnesota Hereford Breeders
Hall of Fame



Steve Kruse
Minnesota Hereford Breeders
Hall of Fame inductee



2018 MHB
Queen
Hannah Neil



2019 MHB
Queen
Hannah
Kruse



Heifer Donated by K&M Cattle and the winner of the heifer Halver Herefords, Bruce and Lisa Finkel, Matt, Cassie, Haler, Amelia, Hudson, Tate, from Chaska, MN.

Why would you use a bull with no DNA test and no scan?

Annual Bull Sale **SATURDAY, MARCH 9, 2019**

12 Noon (CT)

Madison Livestock
Auction,
Madison, SD

Selling: 40 Bulls
Including 15 2-Year-Olds

*We've got the DNA tests,
scans and figures!*



TRICKYSBOY Z43-C92 F01
P43956925 • 2/5/18
Sire: TRICKYSGUN X01-308A C92
CED 7.1 BW 2.4 WW 60 YW 98 M 25 M&G 55
REA .59 MRB .11 CHB\$ 117



TRICKYS SHELL0 622-D13 F04
P43956005 • 2/28/18
Sire: TRICKYS SHEYETTE B06-03X D13
CED 11.9 BW -0.3 WW 55 YW 81 M 33 M&G 60
REA .48 MRB .19 CHB\$ 106



TRICKYS X51 B07 F26
P43956205 • 3/14/18
Sire: KCF BENNETT REVOLUTION X51
CED 8.2 BW 1.4 WW 60 YW 95 M 24 M&G 54
REA .91 MRB .37 CHB\$ 136



TRICKYS GAL X51 C87 F45
P43960961 • 3/21/18
Sire: KCF BENNETT REVOLUTION X51
CED 1.3 BW 5.1 WW 65 YW 111 M 21 M&G 53
REA .91 MRB .30 CHB\$ 145



TRICKYS REV Z38 X51 F56
P43960951 • 3/25/18
Sire: KCF BENNETT REVOLUTION X51
CED 4.1 BW 4.1 WW 67 YW 107 M 16 M&G 49
REA .80 MRB .23 CHB\$ 128



TRICKYS REV 1402 F58
P43960950 • 3/26/18
Sire: KCF BENNETT REVOLUTION X51
CED 5.2 BW 3.4 WW 64 YW 100 M 20 M&G 52
REA .86 MRB .27 CHB\$ 135



TRICKYS SENSO C06 2504 F69
P43959584 • 4/2/18
Sire: UPS SENSATION 2504 ET
CED 7.8 BW 0.6 WW 59 YW 89 M 33 M&G 62
REA .61 MRB .10 CHB\$ 115



TRICKYS SENSO C86 B13 F86
P43957694 • 4/9/18
Sire: TRICKY'S RED BULL Z04-200Z B13
CED 7.2 BW 0.9 WW 47 YW 80 M 26 M&G 50
REA .61 MRB .15 CHB\$ 127

— Focusing on Marbling, Rib Eye and CHB —

Tricky's Herefords
www.TrickysHerefords.com

Dick & Betty Wettlaufer
(605) 485-2648 • C: (605) 270-3465
rwettlaufer@triotel.net
44132 234th St. Winfred, SD 57076

*All the yearling bulls are in the top 50% for BMI & top third for CHB —
Range of 318-495 on BMI and 106-145 on CHB*

Scenes from the Denver Bull Show



Dan Fawcett



Brett Barber



Charlie Boyd



Blake Boyd



Jan Ward



Kevin Jensen



Kyle Perez



Chad Breeding



Grant Hirsche



Eldon Krebs



Gene Stillahn



Quite a few familiar faces in the crowd at Denver.



Jason Hoffman and Shayne Myers showing full brothers, DeBerard and Montgomery.

NATIONAL WESTERN[®] Stock Show

Denver, CO • Carload and Pen Shows • January 17, 2019 • 5 Carloads, 44 Bull Pens • 22 Heifer Pens • 248 Head Total
Judges: John McCurry, Burrton, KS; Cody Sankey, Economy, IN; and Brent Meeks, Taylor, NE



Grand Champion Carload — Hoffman Herefords, Thedford, NE with junior bull calves weighing an average of 1,148 lbs., with a WDA of 3.44 lbs and average scrotal measurement of 33.9 cm. The group was sired by CRR 109 Catapult 322, BR Belle Air 6011, Churchill Pilgrim 632D ET, NJW 135U 10Y Hometown 27, NJW 78P 88X Cowboss 199B and H WR Sustainable 5511 ET.



Reserve Champion Carload — Delaney Herefords, Lake Benton, MN with a group of junior bull calves sired by NJW 73S W18 Homegrown 8, NJW 135U 10Y Hometown 73, R Leader 6964, C Double Your Miles 6077 E, JDH Victor 719T 33Z ET and KCF Bennett Encore Z311 E. The average weight of the load was 1,193 lbs. with a calculated WDA of 3.44 lbs. and an average scrotal measurement of 35.6 cm.



Champion Pen of Bulls — Express Ranches, Yukon, OK with junior bull calves sired by BR Belle Air. They averaged 1,335 lbs., and had a calculated WDA of 3.68 pounds and an average scrotal measurement of 42.3 cm.



Reserve Pen of Bulls — Jensen Bros., Courtland, KS, with a group sired by B&C Stock Option 6026D ET, R Leader 6964 and KJ BJ 319 Laramie 619D ET. The pen weighed an average of 1,185 lbs.; 3.83 WDA; and 39.7 cm average scrotal measurement.

AUCTIONEERS

BALOG Auction Services, Inc.

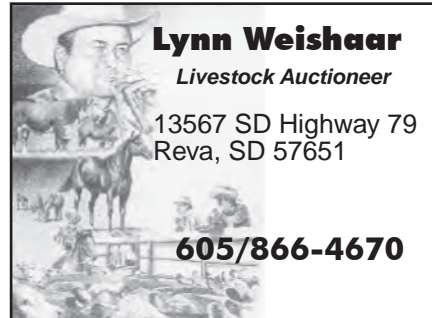
Box 786
Lethbridge, Alberta T1J 3Z6
Canada
(403) 320-1980
1-877-320-1988
Fax: (403) 320-2660
www.balogauction.com



DALE STITH Auctioneer

5239 Old Sardis Pike
Mays Lick, KY 41055

cell 918-760-1550
dalestith@yahoo.com



Lynn Weishaar Livestock Auctioneer

13567 SD Highway 79
Reva, SD 57651

605/866-4670

Seth Weishaar

Livestock Auctioneer

Bringing purebred & commercial cattlemen together.

◆ Purebred

◆ Commercial

◆ Cattle

11639 Snoma Rd.
Belle Fourche, SD
57717
(605) 210-1124
(605) 892-2640



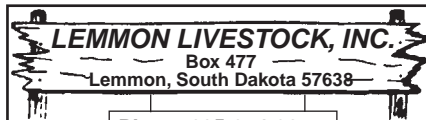
Hereford America

UPCOMING AD DEADLINES:

March issue — Feb. 5
April/May issue — March 5
September issue — Aug. 5
October issue — Sept. 5
Nov/Dec issue — Oct. 5

Contact Jill Hotchkiss for more information
or go to the website:
www.HerefordAmerica.com

AUCTION BARN



Phone 605-374-3877
or 1-800-822-8853

Paul Huffman, General Manager • 605-645-2493
Chad Hetzel, Assistant Manager • 701-376-3748

• Sales Every Wednesday •

We feature
Hereford & Hereford-X Cattle in Special Sales
www.lemmonlivestock.com

CALIFORNIA



1975 E. Roosevelt Rd.
El Nido, CA 95317

Gino & Mona Pedretti (209) 756-1609
Mark St. Pierre (209) 233-1406
Gino Pedretti Jr. (209) 756-2088

Schohr Herefords

P.O. Box 391 • Gridley, CA 95948

Carl & Susan: 530-846-4354
E-mail: ricencows@schohr.com



Selling bulls and heifers
by private treaty.
Contact us for semen.

CANADA

BAR PIPE Hereford Ranch

Generation after generation, same trusted brand.

Jay Cross: (403) 978-2767
Doug Finseth, Mgr.: (403) 938-7726
Okotoks, AB
www.barpipes.com



Brad & Veronica
Doenz
(403) 642-3894

E-mail: doenzb@gmail.ca
www.doenzranches.net

PO Box 362, Warner, AB T0K 2L0
3.2 km E of Warner on #504 & 3.2 km N on Rg Rd #170
Sale: Dec. 6, 2018 @ 1 p.m. at the Ranch

Lilybrook Herefords, Inc.

Practical, Efficient Cattle Are Our Livelihood!

Andy Schuepbach
Box 2044
Claresholm, AB, Canada
T0L 0T0



Phone: 403/625-4693 • Cell: 403/625-6316
Fax: 403/625-1500

andy@lilybrookherefords.com
www.lilybrookherefords.com



P.O. Box 2330
Warman, SK S0K 4S0
Ph: 306-933-4200
Fax: 306-934-0744
info@tbarc.com
www.buyagro.com

CHRIS POLEY: 306-220-5006
SHANE MICHELSON: 403-363-9973
BEN WRIGHT: 519-374-3335

ULRICH

HEREFORD RANCH INC.
"Performance Tested Herefords"

Hans Ulrich Peter Ulrich
(403) 625-2237 Cell (403) 625-1036

Email: peter@ulrichherefords.com
Website: www.ulrichherefords.com
Box 843, Claresholm, AB T0L 0T0
From Claresholm, 8 mi. (12.8 km) E, 4 mi. (6.4 km) N, 1/4 mi. E.



Marshall Ernst Family
Windsor, CO 80550
970-381-6316
www.ernstherefords.com

Bull Sale • March 30, 2019 • 1 p.m.
at Shamrock Livestock • O'Neill, NE

COLORADO



High Altitude
PAP Tested
Since 1980 at 8,000 ft. +

MIKE FUCHS
HEREFORDS

3673 Co. Rd. 14
Del Norte, CO 81132
Mike 719/657-2519

Practical
Proven
Real World
Cattle

• Annual Sale Dec. 14, 2019 •
mikefuchsherefords@gmail.com

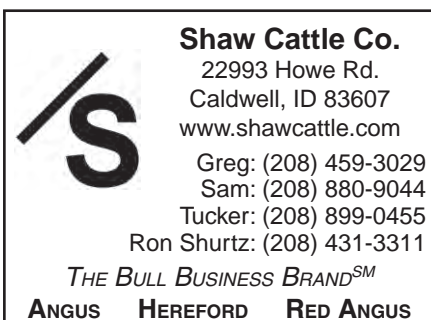


40th
ANNUAL SALE

Tuesday,
Oct. 22, 2019
800-351-5362

970-878-5362 • 970-270-4445 cell
Mary Strang & Family
2969 County Road 8 • Meeker, CO 81641
strangherefords@gmail.com
www.strangherefords.com

IDAHO

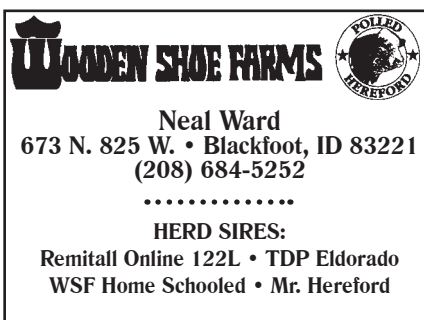


Shaw Cattle Co.
22993 Howe Rd.
Caldwell, ID 83607
www.shawcattle.com

Greg: (208) 459-3029
Sam: (208) 880-9044
Tucker: (208) 899-0455
Ron Shurtz: (208) 431-3311

THE BULL BUSINESS BRANDSM

ANGUS HEREFORD RED ANGUS



Neal Ward
673 N. 825 W. • Blackfoot, ID 83221
(208) 684-5252

HERD SIRES:

Remitall Online 122L • TDP Eldorado
WSF Home Schooled • Mr. Hereford

IOWA



Johnson
Herefords

Since 1918

Registered Horned & Polled Herefords

Jack & Lynne Johnson
2165 240th St.
Milford, IA 51351

Jack: 712-260-3650 • Lynn: 712-330-7470

Good Doin' Genetics

WIESE & SONS

Bulls, Females, Semen
Now in our 100th year of producing top Herefords

P.O. Box 305
Manning, IA 51455
712-653-3678
www.wieseandsons.com

The **Livestock**
Link

THE BEST IN LIVESTOCK VIDEO PRESENTATION

Contact us for more information.

Marc Hotchkiss - 605/490-1513
marc@thelivestocklink.com
13823 Beaver Creek Place, Reva, SD 57651

Phil Eggers
605/351-5438
phil@thelivestocklink.com

Check out the latest VIDEOS at www.thelivestocklink.com

ILLINOIS



Baker Farms
1278 E. 20th Rd. • Streator, IL 61364
Fred • Debby
Sarah • Susan • John
Phone: (815) 672-3491 • Mobile: (815) 257-3491
Fax: (815) 672-1984

QUALITY & PERFORMANCE SINCE 1919



Milligan Herefords
481 Church Rd
Kings, IL 61068

JAMES (815) 562-4946 (815) 761-1523	ROBERT (815) 562-6391	MALCOLM (815) 562-5879
---	--------------------------	---------------------------

Superior Hereford Genetics

LOEHR HEREFORD FARM
P.T. "Pete" Loehr
113 W. Northgate Rd
Peoria, Ill. 61614
309/692-6026 or 1-800-937-BEEF

- The Best of the Best -
Line One, Canadian & Pure Gold

STEPHENS HEREFORD FARM

STEPHENS TRAILER SALES
Eby aluminum livestock

P.O. Box 168 • Taylorville, IL 62568
Mark Stephens
217-825-7913 Cell
mark_stephens46@yahoo.com
Danny Stephens, Trailers • 217-824-2815


LIVESTOCK EQUIPMENT



PORTABLE & STATIONARY LIVESTOCK EQUIPMENT
FAWCETT ENTERPRISES, INC.
36111 211th Street ~ Miller, SD 57362-6814

For More Information Contact:
RANDY FAWCETT
Phone 605/853-3930 • Cell 605/461-9346 • Fax 605/853-3310

CUSTOM DESIGNS AVAILABLE



and
BERAN BROS. ANGUS
HEREFORDS 1350 NE 100 Ave.
Claflin, KS 67525

Craig Beran, Jr. Gerald Beran, Jr.
620/587-3709 620/587-3407
620/786-9703 (cell) 620/786-9569 (cell)

Sale March 18, 2019
CATTLE FOR SALE AT THE RANCH



Registered Herefords
SINCE 1965

DAVIS HEREFORDS
Dean & Danny
(785) 256-4643 • (785) 256-4010

29111 Keene Eskridge Rd.
Maple Hill, KS 66507
13 miles west of Topeka on I-70.
3 miles south on Exit 342.

Deewall Family Herefords

Mike 1074 Hwy. 1
620-635-6511
Mike & Jane
Deewall

Coldwater, KS 67029
620-635-5978 (cell)

www.deewallherefords.com

4V RANCH DOUTHIT HEREFORDS



600 S Lorraine St
St. Francis, KS 67756

MARGO DOUTHIT
(785) 332-2323
Cell 332-4240
4vranch1@gmail.com
4vranchdouthitherefords.com

Bulls & Heifers For Sale



Walter, Megan & Chuck

Douthit-Downey Land & Cattle, LLC
Megan's cell (785) 332-8575
Chuck's cell (785) 332-4034

1805 RS 115
St. Francis, KS 67756
www.douthitherefords.com
megan@douthitherefords.com

FLORY POLLED HEREFORDS

Mike Flory & Family
618 E. 800 Rd.
Lawrence, KS 66047
785/865-3444 • 785/979-3984
mike.flory@sbcglobal.net
JB Trojan & Polled L1

Performance tested since 1979.
Functional cattle with multi-trait performance.



FOR ALL YOUR NEEDS IN HEREFORD CATTLE
IN KANSAS AND SURROUNDING STATES

THE KANSAS HEREFORD ASSOCIATION
Tom Granzow, Secretary-Manager
765 South 3000 Road
Herington, Kansas 67449
785-466-2247 785-466-2226 (FAX)

kansashereford@tctelco.net
www.kansashereford.org

Gustafson Herefords
Gus, Deb and Shelbi Gustafson



7477 Davis Creek Road
Junction City, KS 66441
785-238-7306
I-70 exit 303... 7 miles South

Visitors Always Welcome

Granzow Herefords
Tom, Mary & Tobyn Granzow
765 South 3000 Road
Herington, KS 67449
785/466-2247 or 785/466-6438
www.granzowherefords.com



MEMBER OF THE PTP ALLIANCE

FRANK HUG & SONS
Bulls & Females
For Sale Private Treaty



2556 W. 125th Street
Scranton, KS 66537

Bob Hug 785/230-0434 Ed Hug 785/230-7597
fhug.sons@gmail.com

JENSEN BROS.
Jensen Livestock Agency




Kevin & Sheila Jensen
P.O. Box 197
Courtland, KS 66939
785-374-4372
Kevin: 785-243-6397
jensenks@courtland.net
www.jensenbros.net

Annual Bull Sale: March 7, 2019
See us for your next herd sire!

MALONE Hereford Farm
1371 Road F
Emporia, KS 66801
Phone: 620-342-7538
Alton's Cell: 620-794-2358
ammalone@lcwb.coop



Alton, Marie, Brian, Dustin and Michelle Malone



MEITLER
1237 N. 13th Rd
Lucas, KS 67648

Gene: 785/658-5612
meitlercattle@gmail.com
Darris: 785/658-5208
Clint: 785/658-7028
www.meitlercattle.com

MILL CREEK RANCH
20635 Hessdale Rd
Alma, KS 66401
David Breiner (785) 449-2841
David cell (785) 456-4790
Chad Breiner (785) 564-2091
Ryan Breiner (785) 207-3070

www.millcreekranch.com
millcreekranch@embarqmail.com

Production Sale Last Tuesday in February
MANHATTAN, KS

"Best of Both Worlds Sale" • 4th Mon. in March
12 noon at the ranch • Dwight, KS



Also selling
70 F-1 Black
Baldy heifers
with calves,
75 Fall bred
heifers
20 Quarter
Horses

Jan: 785-482-3383 • Arden: 785-466-1422
Box 8, Dwight, KS 66849
E-mail: jakoleenbros@tctelco.net
www.oleenbrothers.com

Thanks for
supporting the
KHA
events!



Sandhill Farms
Registered Polled Herefords
Kevin, Vera & Tyler Schultz
2408 280th Ave., Haviland, KS 67059
Phone: (620) 995-4072 • Cell: (620) 546-4570
Tyler Cell: (620) 546-1574
e-mail: kevin@sandhillfarms.com
website: www.sandhillfarms.com
Sale March 22, 2019

Schlickau Herefords
Since 1913
Cattle for Sale Private Treaty

Lois
James and Charlene
H: 620/465-2691
Cell: 316/734-3700
schlickauranch@gmail.com

H: 620/465-7749
14506 S. Victory Rd.
Haven, KS 67543
schlickauhd@embarqmail.com

Thanks for
attending the
KHA
events!

HEREFORD
America

Ad Deadline for the
March issue is Feb 5

www.HerefordAmerica.com

MINNESOTA

BELL'S RAWHIDE RANCH
Horned & Polled Herefords
F1 Baldy Heifers
Quality Cattle & Horses
6006 76th St. SW
Motley, MN 56466
Roy & Tammy Bell
(218) 397-2579
cell (218) 296-1960
2.5 miles East of Leader

CARLSON FARMS
CF
1470 10th St. N.E.
Murdock, MN 56271
rbmrc1@gmail.com
Ross, Beth,
Mallory, Regan
320-366-3726
Rob, Jean,
Brett, Bailey, Brook
320-366-3970

Dakitch Hereford Farms
David, Lorie, Michael & Mason Kitchell
Matthew & Darci Kitchell
3471 State Highway 200
Ada, MN 56510-9260
Quality, Performance Cattle For Sale
www.dakitchfarms.com 701-799-7690
dakitch@arvig.net Visitors Always Welcome

Delaney Herefords
Jerry & Shelly Delaney
2071 Co. Rd. 101
Lake Benton, MN 56149
Home: 507/368-9284 • Cell: 507/820-0661
jdh@delaneyherefords.com
www.delaneyherefords.com
Cattle for sale at all times.

DOSE FAMILY HEREFORDS
Building a family tradition on maternal cow power
Allan & Joleen Dose Family
Arlington, MN 55307 C: 320-583-8002
allandose@frontiernet.net

Hanson Herefords
Jim & Jeri • Brandon & Jody
37590 110th St
Comfrey, MN 56019
507.877.3631
jerihanson@hotmail.com
Jim 507.829.6756 • Jeri 507.828.2211
Brandon 605.380.7434 • Jody 507.276.8577

Jones Farms
Dave & Susan Jones
31490 E. State Hwy. 112
LeSueur, MN 56058
(507) 665-3962
(507) 317-5996 cell
Breeding Stock For Sale
Bulls, Heifers, Club Calves,
F1 Baldy Heifers

KLAGES HEREFORDS
Quality seedstock for sale
Jeff & Mary Klages
64090 410th St
Ortonville, MN 56278
ph/fax (320) 273-2163
jmkklages@fedtelldirect.net

Krogstad Polled Herefords
Les Krogstad Darin Krogstad
3348 430th St. 16765 Welch Shortcut
Fertile, MN 56540 Welch, MN 55089
(218) 945-6213 (651) 485-0159
(218) 289-5685 (cell)
les@krogstadpolledherefords.com
www.krogstadpolledherefords.com

Lawrence Herefords
Since 1957
2477 N.W. Main St. • Coon Rapids, MN 55448
Cattle at Princeton, MN
Bulls & Females For Sale
Doug & JoAnn (763) 755-4930
Bryan & Marytina (763) 389-0625
Bradley & Brigitte (612) 720-1311
E-mail: joannlawrence8@msn.com

Lind Polled Herefords
Since 1958
• Dan • Erika • Susie • Judy •
Contact: Dan Lind
200 E. Grove St.
Rushford, MN 55971
(507) 864-2298
cell: (507) 458-2080
e-mail: Lind2@acegroup.cc
Visitors Always Welcome

Lost Meadows Farm
Registered Polled Herefords
Shawn & Dawn
36860 Rethwisch Lane
Frazee, MN 56544
218.334.4045
Dave & Rhonda Eckert
18513 405th Ave
Frazee, MN 56544
218.334.5732

Polled Herefords • Sales
McIver's Happy Acres
David, Maryln, Scott and Tom McIver
15624 340th Ave. Phone: 320-283-5776
Farwell, MN 56327 Fax: 320-283-6044
mcivers@runestone.net
www.mcivershappyacres.net

Nelson Polled Herefords
Phil • 507-629-3375 1616 Co. Rd. 11
Will • 507-626-0239 Tracy, MN 56175
E-mail: wnelson@westtechwb.com
Herd Bulls
NPH Active in L III TFL X651 Tested 1616ET
T.P.R. EF Beef P230 Frank B497
GENESEEK EFBeeF U248 Fellis A246
NPH Tender 10 Domino 428
NPH Tender 6 Domino 407
Proud to be a Hereford Breeder

Minnesota Hereford Breeders
Secretary/Treasurer
Kory and Michele Kruse
2075 51st St.
Ellsworth, MN 56129
507-920-5474
kmkruse96@gmail.com
minnesotaherefordbreeders.com

"Quality" not "Quantity"
Hereford Cattle
Schmidt Herefords
Pipestone, MN 56164
John A. Schmidt John E. Schmidt
787 70th Ave. 905 7th St SW
(507) 825-2383 (507) 825-2786
cell: (507) 215-1037 cell: (507) 215-1174

Contact us for your Hereford advertising needs
Hereford America
605/866-4495
www.herefordamerica.com
jhb@herefordamerica.com

SPRINGWATER SPH Polled Herefords
Chad, Lacey, Easton & Michoan Williamson
Pipestone, MN
507/825-5766
507/215-0817
springwater@svtv.com
Troy Williamson
Garretson, SD
507/597-6221
605/254-7875
twilliamson@alliancecom.net

SCHAFFER HEREFORDS
Lester & John Schaffer
FOR SALE:
64664 170th St. Bulls
Buffalo Lake, MN 55314 Females
(320) 833-2050 Semen
(320) 582-1458 John cell
(320) 582-0489 Les

Walsh Family Herefords
Tom and Lisa Walsh
705 100th St. SE, DeGraff, MN 56271
Home: 320-875-3073, Cell: 320-760-2607
tom.walsh@riverviewllp.com
Bull Sale in the Spring with our partners,
Starmak, from Tea, SD.
We sell a few select females private treaty.

Check out the latest VIDEOS at www.thelivestocklink.com

The Livestock Link

Contact us for more information.

Marc Hotchkiss - 605/490-1513
marc@thelivestocklink.com
13823 Beaver Creek Place, Reva, SD 57651

Phil Eggers
605/351-5438
phil@thelivestocklink.com

THE BEST IN LIVESTOCK VIDEO PRESENTATION

Inquire about the total package ... videoing, video sale, online bidding and clerking.

MONTANA



The Bayers Family
248 Bayers Lane
Twin Bridges, MT 59754
(406) 684-5465 • (605) 490-1409 (Jill)
jhb@herefordamerica.com



Private Treaty Sales
www.beeryherefords.com
Eastern Montana's finest Herefords
~ Horned & Polled ~ Matt & Krista
Joanne 406/773-5721
406/773-5710 cell 406/979-5720
Also selling Red Angus bulls & females

DALLAS POLLED HEREFORDS

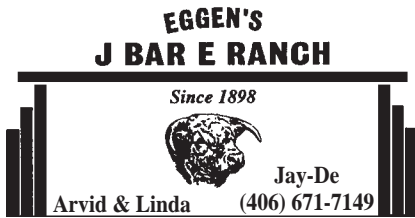
Don Dallas
Box 532
Canyon Creek MT 59633
406/368-2244 Ranch
406/443-5110 Office
"Mountain Raised Performance Cattle"

DUTTON HEREFORDS



190 Sunnyside Ln.
Gold Creek, MT 59733
Dean (406) 288-3330
Cell (406) 240-8014

*Registered bulls and commercial
bred heifers for sale.*



Jay-De
Arvid & Linda (406) 671-7149
(406) 895-2657 Lorrie
(406) 765-7068 cell (406) 765-8219
Box 292 • Plentywood, MT 59254



Mark, Della, Lacey & Jane'a Ehlke
PO Box 178 • Townsend, MT 59644
Mark: 406/439-4311 • Della: 406/439-4300
www.ehlkeherefords.com

FEDDES Herefords

www.feddes.com
TFeddes@msn.com
Dan (406) 284-6810 • cell 570-1602
Tim (406) 284-6990 • cell 570-4771

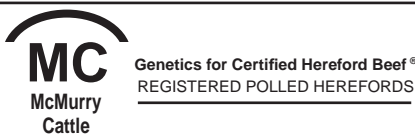
2009 Churchill Road
Manhattan, MT 59741-8122

Hereford America

*North America's Largest Privately
Owned Hereford newspaper*

Hereford news from around the
region. The publication that is read
from cover to cover.

www.HerefordAmerica.com
jhb@herefordamerica.com



Genetics for Certified Hereford Beef®
REGISTERED POLLED HEREFORDS
Fred, Doreen and Rebecca McMurry
2027 Iris Lane Ranch 20 miles
Billings, MT 59102 east of Billings on
(406) 254-1247 Squaw Creek Road
(406) 697-4040 (cell) www.mcmurriecattle.com
(406) 254-1247 (fax) mcmurriecattle@gmail.com



4551 State Rt. 514
Glenmont, OH 44628
Conard & Nancy Stitzlein (330) 378-3421
Matt Stitzlein (330) 378-3487



MOHICAN WEST
3100 Sportsman Park Road
Laurel, MT 59044
Phone/Fax (406) 633-2600
Terry Powlesland (406) 633-2810



REAL WORLD - HONEST - GUARANTEED BULLS

Ace & Tara Diemert
230 3700 Rd South
Lothair, MT 59461
406/432-3412
ngrhereford@northerntel.net

BREEDING HEREFORD
CATTLE SINCE 1945



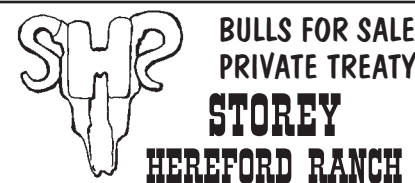
Steer In Trailer Sales



New & Used
Stock & Horse Trailers
Flatbeds - Mats -
Cargo Trailers

Located at I-90 and Hwy. 287

29 Bronco Drive (406) 285-4300
Three Forks, MT 59752 Fax: (406) 285-4146
www.steerin.com 1-877-335-5372



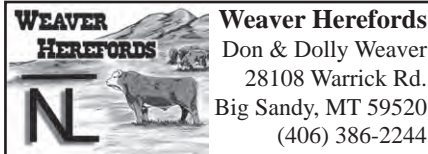
10069 River Road
Bozeman, MT 59718
Chuck & Kathy Kohlbeck
Chuck, cell (406) 580-8255
Garrett & Katelyn Knebel
(406) 580-9565
SHR@storeyherefordranch.com

Thomas Herefords

P.O. Box 330055
Gold Creek, MT 59733

Bulls & Heifers for Sale

Richard & Shirley (406) 560-8122
Bruce (406) 544-1536
e-mail: bruce@thomasherefords.com
www.thomasherefords.com



e-mail: dwhrfrd@gmail.com
www.weaverherefords.com

Heifers for sale private treaty in the fall.
Annual bull sale the first Monday in March.



www.wichmanherefords.com

Registered bulls and females
for sale by private treaty.
Proven bloodlines, longevity, performance, functional
justin@wichmanherefords.com

Justin & Carmen Wichman
PO Box 29 • Moore, MT 59464
Home: (406) 538-8997 • Cell: (406) 350-3123

NEBRASKA

(continued on next page)

BLUEBERRY HILL FARMS

POLLED HEREFORD CATTLE
Doug Bolte
Manager

1103 South Grandview Drive
Norfolk, NE 68701

Cell Phone 402/640-4048
email: dbolte@telebleep.com

www.blueberryhillcattle.com

Visitors Always Welcome!

ESTERMANN HEREFORDS

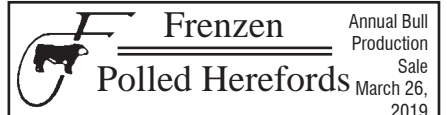
— Continuous Herd Since 1899 —
32 years of Canadian breeding

Joe, Marlene & Dan Estermann
35219 S. Somerset Rd.
Wellfleet, NE 69170
Phone: 308-963-4473
E-mail: jesteremann@nebnet.net

Quality Cattle That Work



Lowell & Carol 48979 Nordic Road
(402) 589-1347 Spencer, NE 68777



Females and Club Calves
for sale at private treaty.

Galen, Gwen and Eric Frenzen
50802 N. Edgewood Rd. • Fullerton, NE 68638
Galen's Cell: (308) 550-0237 • Eric's Cell: (308) 550-0238
www.frenzencattle.com

GIBSON HEREFORDS

Line 1 Breeding

LARRY AND KAREN GIBSON
35570 W. Gibson Rd.
Wallace, NE 69169
308-387-4580 ~ 308-530-6435
kgibson@nebnet.net



Show Heifers & Steers

Randy Helms Cody Helms
73031 Rd 419 303-842-9071
Holbrook, NE 68948
308-493-5312

HENKEL POLLED HEREFORDS

Pure Station
Polled L1 Dominos

GENE ERIC
402/729-5866 402/239-9838

56095 - 715 Rd. • Fairbury, NE 68352
henkelhereford@hotmail.com

HUWALDTS HEREFORDS

86423 558 Ave • Randolph, NE 68771

Ed & Marsha
Home: 402/337-0784
Cell: 402/360-4387

Angie
Cell: 402/360-4796

Keith & Virginia
402/337-0307

Email: huwed@live.com
Website: www.edhuwaldt.com

Polled Hereford Bulls & Females For Sale at Private Treaty.
Visitors Always Welcome!



Milk, Muscle Performance & Weight

Bulls and Females
Always For Sale, Females
that Visitors Always Welcome! that
Perform Prolific + Disposition Produce

Jack & Bev Beeson 402/375-3404
Wayne, NE 68787 cell: 402/375-9027

Feed Efficiency, Carcass,
Moderate size, High gain
Documented proof

KEG HEREFORD RANCH

Ken & Marilyn Stephens
39753 906th Rd., Valentine, NE 69201
402-376-1267

ORVIL E. KUHLMANN & SONS INC.

— Long-time Polled Hereford Breeder —

60 Two-Year-Old & Yearling Bulls
for Sale by Private Treaty

3275 Scouts Rest Ranch Rd.
North Platte, NE 69101
(308) 530-4574

Anthony@KuhlmannRanch.com
www.kuhlmannranch.com



CATTLE FOR BOTH PUREBRED
AND COMMERCIAL PRODUCERS

Larry and Keven Larsen
2252 CR 25
Decatur, NE 68020
402-687-2532
Selling at
Shamrock Livestock
in O'Neill
April 11, 2019

(continued from previous page)

NEBRASKA

MELCHER HEREFORDS, INC.

Hereford Bulls For Sale
Sat., January 26, 2019
at the ranch • Page, NE • 1:30 PM

Also for sale privately:
200 Commercial Bred Heifers,
RWF and BWF

Don: 402-336-7194 • Kevin: 402-340-6189
86287 Voyager Rd., Page, NE 68766

**MONAHAN
CATTLE
COMPANY**

Brand of Quality
Herefords

P.O. Box 306 • Hyannis, NE 69305

James (308) 458-8019
Bryan (308) 458-8021
Bob (308) 458-8024




NEBRASKA HEREFORD ASSOCIATION
Sheri Wieden • Executive Director
402-520-2296 • sheriwieden@gmail.com
13287 East B-Line Road
Blue Springs, NE 68318




Next Sale:
JAN. 31
John & Mary Ridder Family
Callaway, Nebraska
308.836.4430 land / 402.450.0431 cell
mailbag@ridderranch.com



**SCHUTTE &
SONS**
1417 Road 2100
Guide Rock, NE 68942-8099
Ron Schutte
402-756-3462 • 402-746-4378 cell
rnschutte@gtmc.net
www.gtmc.net/schutte



Schroer Herefords
Lavern Schroer Family
2924 Road P ~ Nelson, NE 68961
402-756-7834
cell ~ 402-879-8056
Line One Herefords.
Bulls and females for sale by private treaty.
Cattle bred up, not fed up!



Hereford America
March ad deadline
is Feb. 5th
E-mail to:
jbh@
herefordamerica.com



STEWART HEREFORD RANCH
Jay and Kaye Stewart
45717 875th Rd
Newport, NE 68759
Phone: (402) 244-5457
Cell: (402) 760-0961

**TEGTMEIER
POLLED HEREFORDS**
59th Annual Sale March 11, 2019
71556 609th Ave.
Burchard, NE 68323
Russ: (402) 865-5805
www.tegtmeierpolledherefords.com



Scott & Judy McGee
Blake McGee
Melissa & Brandon Buehler
Darci & Mick Pesek
1900 G Street
Fairbury, NE 68352
Scott's Cell: 402-300-2659
www.valleycreekranch.net

**VAN NEWKIRK
HEREFORDS**
Quality Herefords Since 1892
Sale: January 21, 2019
☆ Joe Van Newkirk
Oshkosh, NE 69154
Phone: 308/778-6049
www.vannewkirkherefords.com



**Vin~Mar
Cattle Company**
Owners: Vince, Mary, Ryan & Bryson Bickel ~ Jerry & Suzy Bottorff
Contact Vince at 308-282-0416 or Cell: 308-360-0336
2821 630th Rd
Gordon, NE 69343
www.vinmarcattle.net
Email: vmbickel@gpcom.net
Registered Black Angus & Hereford
Visitors Welcome Anytime!

NORTH DAKOTA

BEHM
Polled Herefords
Larry, Aneica, and Logan Behm
5944 Hwy. 1806
Beulah, ND 58523
701-873-2646
behmpolledherefords@gmail.com



BOEHNKE HEREFORD RANCH
Registered Herefords Since 1946
Unpampered • Functional • Sound
Cattle for Sale at All Times
8424 4th Ave N.E.
Kramer, ND 58748
Jeff 701-359-4450 • Jared 701-201-0445
e-mail: jboehnke@utma.com

CARTER'S / PENNER
POLLED HEREFORDS / LAND & CATTLE
Annual Bull Sale
at the farm in Rocklake, ND
1st Saturday in February
Jimmy Carter
P.O. Box 55
Rocklake, ND 58365
701-266-5575
Jay & Malynda Penner
28074 440th Ave
Freeman, SD 57029
605-929-7314
mrs.penner@hotmail.com

DIAMOND R HEREFORDS
Randy & Julie Lemm Family
623 166th Ave. SE
Hillsboro, ND 58045
(701) 636-5465
rdlemm@yahoo.com



Merlin & Eunice
Fornes
Quality grass-raised
Polled Herefords
12169 56th St. SE
Kathryn, ND 58049
(701) 924-8360



FRIEDT HEREFORDS
Production Sale Feb. 13, 2019
& Private Treaty
Gary, Kirsten & Aaron
8733 55th St. SW • Mott, ND 58646
701/824-2300 • Gary's cell: 701/290-7231
Megan & Dusty Dukart 701/290-7230
Lindsey & Drew Courtney
E-mail: gfriedt@hotmail.com
Website: www.friedtherefords.com

**Two-year-old bulls
for sale private treaty**
Giedd Hereford Ranch
Mark, Wanda and Shane Giedd
Ashley and Trevor Woolley
552 18th Ave. SW, Washburn, ND 58577
Mark 701-315-0230 • Shane 701-315-0537
Ashley 701-315-0232
gieddherefordranch@outlook.com
www.gieddherefordranch.com

HELBLING HEREFORDS
Registered and commercial.
Bulls and females for sale any time.
— Private Treaty —
4785 Co. Rd. 83 • Mandan, ND 58554
Jim 701-663-7123 Fred 701-663-0137 Wayne 701-471-4391
701-516-7479 701-400-1880
E-mail: helbling95@msn.com

**HUSO & SONS
HEREFORDS**
Bred For Better Beef™
Jim Huso
701.326.4278 or 701.326.4176 (evenings)
11922 17th St. NE, Aneta, ND 58212
www.husoandsons.com

MIDWAY POLLED HEREFORDS
7480 26th St.
Sheyenne, ND 58374
Doug & Ann
Bill & Karen • 701/996-3300
Jake & Whitney Burkhardtsmeier
701/996-3600
midwayph@gondtc.com
Herdsmen: Jake Burkhardtsmeier
Visitors Always Welcome

MRNAK HEREFORD RANCH
ANNUAL SALE Feb. 10, 2019 SALE IN BOWMAN, ND
14503 91st St. SW • Bowman, ND 58623
Marlene 701/574-3124
Wayne, Jill & Robyn 701/574-3172
Terry & Andy 701/574-3193
Brent & Jenna 701-206-0604
www.mrnakherefords.com

**NORTH DAKOTA
HEREFORD ASSN.**
Joana Friesz
Sec/Treas.
PO Box 67
New Salem, ND 58563
701/843-8750 • 701/400-8744 cell
701/843-8744 work
joana@northlandinsuranceagency.com



(North Dakota card ads continued on next page)

NORTH DAKOTA



OLSON
Hereford Ranch

Carl, Lindsay, Casey, Dru & Stetson Olson
16068 24th St SE • Argusville, ND 58005
ranch: 701/484-5779 • cell: 701/361-0684
Ed & Jeanne Olson • 701/238-3601

Red Power Bull Sale - Feb. 21, 2019
www.olsonredpower.com
E-mail: olsoncandc@aol.com


PELTON POLLED
HEREFORDS



*We produce Polled Herefords
for the Commercial Cowman*


Craig 40 93rd Ave. NW
Kayla & Kain Halliday, ND 58636
cell: 701-260-0058 • 701-548-8243
craigp@ndsupernet.com

Pollestad Herefords



4th Generation Hereford Breeder
Line Bred Hazlett and Canadian Bloodlines
• Est. in 1927 •

Steven Pollestad 2525 92nd Ave. SW
Ph. (701) 974-3970 Taylor, ND 58656
E-mail: pollestad@ndsupernet.com



Stroh
HEREFORD RANCH

Over 50 years of Registered Herefords
TONY & MIKE STROH

10550 Hwy. 200 Killdeer, ND 58640
701/764-5217 701/573-4373
Annual Sale Feb. 7, 2019



Winter Ranch
Quality Polled Hereford Cattle
1990 10th St. NE
Goodrich, ND 58444

Jason & Linda • 701-884-2424
Kevin & Julie Bender • 701-884-2417



Visitors Always Welcome
Stop Anytime

Videoing, video sales, online sales and sale clerking.

The Livestock Link

Livestock Videoing • Video Sales
• Bid by Click Online Sales
Go now www.thelivestocklink.com

THE BEST IN LIVESTOCK VIDEO PRESENTATION

Contact us if you have questions.
Marc Hotchkiss • marc@thelivestocklink.com
Phil Eggers • phil@thelivestocklink.com

Aaron Friedt, Online Sales
aaron@thelivestocklink.com
13823 Beaver Creek Place, Reva, SD 57651

www.thelivestocklink.com



Buckeye
Hereford Association

Lisa Finnegan Keets, secretary
440-320-6193
ohioherefordlady@yahoo.com

Sale • March 2019 • Columbus, OH
www.BuckeyeHerefords.com

OREGON

Allison
HAY & HEREFORDS



Mike & Carol Allison
70641 Kunze Lane • Boardman, OR 97818
(541) 571-7139
(541) 571-7313



BIRD
HEREFORDS

David and Lynda Bird
Phone: (541) 742-5436
E-mail: bird@pinetel.com
45863 Crow Rd.
Halfway, Oregon 97834

Chandler Herefords Inc.

Wide, Thick, Long, Correct, Beautiful, Balanced Herefords
127 Years in the business

541-523-2166
George Duane
541-403-0125 541-403-0124

17578 Chandler Lane
Baker City, OR 97814
www.chandlerherefords.com
E-mail: chandlerhereford1889@yahoo.com



Looking forward
to green grass!

Hereford America
605/846-4445
www.herefordamerica.com
jbh@herefordamerica.com

HARRELL
HEREFORD  RANCH

42590 SALMON CREEK ROAD
BAKER CITY, OR 97814

Bob Harrell, Jr. Don Schafer
541/403-2210 541/403-0008

Registered Hereford Cattle and Quarter Horses
ANNUAL SALE FIRST MONDAY IN MARCH



BOWLING RANCH
RED ANGUS

2211 S. 29th Co. Rd. Blackwell, OK 74631

Melvin Young Nancy Bowling
Herdsmen 580-362-5026
580-761-9257 nkbowling@yahoo.com

DAY HEREFORDS
Hazlett-Turner Ranch Bloodlines
Disposition & Thickness Bred

"Located in the heart of the Old Hereford Heaven"
next ranch north of the famed former Turner Ranch on Hwy 1

Mr. & Mrs. Richard C. Day & Family
3284 St Hwy 1 W • Roff, OK 74865
580-456-7567

Lents
Anxiety 4th Herefords
Thick, substantive & efficient!

J.H. "Jim" Lents Home 580-246-3560
25398 SW Coombs Rd Cell 580-704-3560
Indianapolis, OK 73552 jlents@sirinet.net




HEREFORD
America

Largest privately owned Hereford newspaper in North America. // Circulation 6,900.

SOUTH DAKOTA

... more South Dakota on next page

AMDAHL
ANGUS & HEREFORD

Bull and Female Sale
Saturday Feb. 9, 2019
12 miles N of Rapid City, SD

Tim 605-929-3717
JD 605-999-6487
Email: timamdahl@yahoo.com
Website: AmdahlAngusandHereford.com

Jim BAKER
HEREFORD RANCH
P.O. Box 2769 • Rapid City, SD 57709

BULL SALE: Feb. 9, 2019

Jim 605/381-9519 cell
E-mail: jbakereherefords@gmail.com
www.bakereherefords.com

JZ Bar JZ Ranches
Homozygous Polled Herefords
Homozygous Polled Limousin
18542 326th Ave.
Holabird, SD 57540

Annual Production Sale
Tuesday, Feb. 19, 2019

Don/Peg/Seth Zilverberg
605/852-2966
web site: www.barjz.com
email: cattle@barjz.com

DVORAK HEREFORDS



LAKE ANDES, SD

Richard & Darlene
Jeff & Tiphany
Boyd & Jenni

605/384-3914 Cell: 491-2068
605/487-7090 Cell: 491-7090

EGGERS
Southview Farm

Tim & Philip Eggers
25748 S. 476th Ave.
Sioux Falls, SD 57104
(605) 351-5438 • (605) 929-6560
ESFherefords@aol.com

1-29 Bull Run
Bull Sale March 9, 2019

FAWCETT'S
ELM CREEK RANCH

21115 344th Ave. • Ree Heights, SD 57371

Robert Fawcett
Keith, Cheryl, Matt & Erin: 605/870-0161
Daniel & Family: 605/870-6172
Weston & Kristin Kusser: 605/478-0077
www.fawcettselmcreekranch.com

Bull & Female Sale • February 11, 2019

FINK
POLLED HEREFORDS



Mike Fink
P.O. Box 184 • 43610 SD Hwy 42
Bridgewater, SD 57319
Phone: (605) 729-2515
Cell Phone: (605) 999-2075
www.sites.google.com/site/finkpolledherefords
E-mail: swamprat@unitelsd.com

FREDERICKSON RANCH
Pyramid Beef Bull Sale
First Saturday in December at the ranch

Mark & Mary Kay
Frederickson
19975 Bear Ridge Rd.
Spearfish, SD 57783
605/642-2139
605/645-4934 (cell)

Nate & Jayna
Frederickson
605/254-4872 (cell)

Shawn & Sarah
Tatman
307/750-2250

Gant
Polled Herefords

Box 15 • Geddes, South Dakota
Mark • Phone (605) 337-2340
Dennis • Phone (605) 337-2564
2 year-old Angus & Polled Hereford
BULL SALE
February 22, 2019
Geddes, SD

Hanson's
Polled Herefords

Sherry Hanson
15477 409th Ave.
Conde, SD 57434
Cell: 605-382-7477

hanson_herefords@hotmail.com

HILLSVIEW FARMS

*Polled Hereford bulls
for sale private treaty Feb. 2, 2019
at the farm*

Darwin & Cindy Aman
Andrew — Sam — Alex
32824 119th St. • Eureka, SD 57437
(605) 284-2721
dcaman@valleytel.net

Hoffman
HEREFORDS

Colin & Mary Beth Hoffman
(605) 439-3623
11341 357 Ave.
Leola, SD 57456-7105
Visit our website at
www.hoffmanherefords.com

HORA HEREFORDS

Suppliers of Show Cattle
Steers & Heifers

Jim & Karla Hora
27718 423rd Ave. • Parkston, SD 57366
(605) 928-3008 • Cell (605) 770-3008
E-mail: jhora@santel.net


K&B HEREFORDS & ANGUS

17309 322nd Ave.
Onida, SD 57564
E-mail: kbherefords@venturecomm.net

Kirk: 605-973-2351 Cell: 769-9991
Brooke: 605-765-2248 Cell: 769-9992
Ken & Bonnie: 605-765-2335 Cell: 769-9999

KLAGES HEREFORDS

Quality seedstock
for sale



Jeff & Mary Klages
64090 410th St
Ortonville, MN 56278
ph/fax (320) 273-2163
jmkklages@fedtelirect.net

Knippling Hereford
Registered and Commercial Herefords

Internet bull sale on
KnipplingCattle.com

Gann Valley, SD 57341
Randy Garin
605/680-3185 605/680-4637

South Dakota
Hereford Association

November 8, 2019
SDHA Annual Meeting & Banquet

November 9, 2019
South Dakota Excellence Sale

Nuhsbaumer Herefords

Steve, Amy & Casey
Zell, SD
(605) 450-0550

Bulls for sale
private treaty...
please call for more
information.

www.nuhsbaumerherefords.com
Visitors Welcome e-mail: sanuhs@nrctv.com
Directions: from Zell, 3 m. West on Hwy 212, 5 1/2 South

OLLERICH BROTHERS HEREFORDS

Over 45 years in the Registered Hereford Business
29188 303rd Ave
Clearfield, SD 57580
(605) 557-3246
www.ollerichbrothersherefords.com

Bulls For Sale Privately
JEROME JAMES

 **Home Raised**
First Cross Black Baldy
Replacement Heifer Calves

Top End Sell at
Philip Livestock Auction
the end of April

Bill Parsons
19955 228th Ave.
Milesville, SD 57553
605-544-3247

 **RCR**
Polled Herefords

— Visitors Always Welcome —

James & Bonnie
Lake Andes, SD • James 605/481-1936

Michael & Wendy
Andrew • Tim • Nick • Makayla
Colton, SD • Michael 605/351-5123
Tim 605/481-8498 • Nick 605/553-6050

RAUSCH HEREFORDS
Hoven, SD 57450
Visitors Welcome

• Sale Third Mon. in February •

Jerry • Shannon • Vern & Joel
605/948-2146 • 2157 • 2375

2 miles west of Hoven on Hwy. 20
e-mail: rauschherf@rauschherefords.com
Website: www.RauschHerefords.com

Ravine Creek Ranch
The Bischoffs
Huron, SD 57350

SALE MARCH 2, 2019
• 605/352-5530 •
E-mail: ravinecr@santel.net

Schuetz
Land & Cattle Co., Inc.

Raising quality commercial Hereford cattle for over 60 years.

Jim & Judy Schuetz 605-852-2789
Jerry & Kathy Schuetz 605-852-2046
PO Box 266 slc@venturecomm.net
Highmore, SD 57345 www.slc-herefords.com

Simon Herefords
Low maintenance, feed efficient Hereford cattle

Brian & Colleen Simon
Seneca, SD 57473
Home: 605/436-6725
Cell: 605/765-4564
bcsimon@venturecomm.net
www.simonherefords.com

Selling bulls & heifers private treaty.

South Dakota
Hereford Association

Mark and Jeanne Johnson, managers

South Dakota Hereford Association
46473 289th St.
Centerville, SD 57014
Jeanne.Johnson@yahoo.com
www.southdakotaherefords.org

71st DIRECTORY 71st
South Dakota
Hereford Association

Contact us for a copy
Hereford America
jbh@herefordamerica.com

THORSON HEREFORDS

022
Doug and Nancy Thorson
22750 Cottonwood Road
Quinn, SD 57775
605-859-3538
we02much@gwtc.net
www.thorsonherefords.com

Visitors welcome at the Ranch

... continued

SOUTH DAKOTA

Tricky's Herefords

Dick & Betty Wettlaufer
(605) 485-2648 • Cell: (605) 270-3465
44132 234th St. • Winfred, SD 57076-7318
E-mail: rwettlaufer@triotel.net
www.TrickysHerefords.com

BULL SALE • March 9, 2019 • Madison, SD

Wagner Herefords

Reese & Elly Jo Wagner
39365 182nd St.
Redfield, SD 57469
Reese 605-450-1085
Elly Jo 605-450-9790
wagnerherefords.com

Bull Sale • Feb. 23, 2019

POLLED HEREFORDS

Since 1947

Bulls and Heifers for sale at the farm

DEL & RUTH WOOD
WOODCREST FARMS
Cresbard, SD 57435
(605) 324-3289

ZENS HEREFORDS

*Bulls, Heifers and Show Steers
Private Treaty Sales*

Harley, Matt & Mark Zens
Canova, SD 57321

Phone (605) 523-2655
Matt (605) 310-5782 cell
hrzens@yahoo.com
www.zensherefords.com

SERVICES

Bonnie Mrnak, owner

A₂Z PRINTING

PO Box 35 701-523-4656
306 Hwy 12 W Ste C 888-768-4656
Bowman, ND 58623 Fax 701-523-4756
email: a2zprint@ndsupernet.com

American Live Stock
A MARKEL Insurance Company

Cheri & Jim Gies
Cattle and Equine Insurance

19381 CR 74
Eaton, CO 80651
Tel/Fax (970) 454-3836
Cell (970) 590-0500
cmgies@msn.com

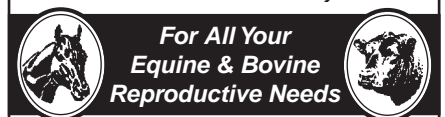


El Molino Sawmill



P.O. Box 1106
Alto, NM 88312
Phone: 575/336-1237 • Cell: 575/808-0860
Email: elmolino@valornet.com
www.elmolinosawmill.com

HIGH PLAINS GENETICS, LLC



*For All Your
Equine & Bovine
Reproductive Needs*

(605) 787-4808

www.high-plainsgenetics.com

HANDEL MARKETING, LLC

Private Treaty Sales ♦ Ring Service ♦ Insurance

**Order Buying and Selling Commercial &
Registered Breeding Stock & Feeder Cattle**

Art & Pat Handel 605/391-8233
handelhereford@aol.com 1501 Summit Blvd.
www.arthandelscattle.com Rapid City, SD 57701



Steer In Trailer Sales



New & Used
Stock & Horse Trailers
Flatbeds - Mats
Cargo Trailers

Located at I-90 and Hwy. 287

29 Bronco Drive (406) 285-4300
Three Forks, MT 59752 Fax: (406) 285-4146
www.steerin.com 1-877-335-5372

HEREFORD America

www.HerefordAmerica.com

7 Issues Per Year
• September through April •

For more information contact
Jill Hotchkiss at 605/866-4495
jill@herefordamerica.com

TEXAS

Barber Ranch

Barber Ranch 806-235-3692
Justin Barber 806-681-5528
Brett Barber 806-681-2457
Terri Barber 817-727-6107
Jason Barber 817-718-5821
Dale Barber 806-673-1965
Mary Barber 806-930-6917

10175 F.M. 3138 • Channing, TX 79018
barberranch@wildblue.net • www.barberranch.com

Sale Date: Nov. 9, 2019
noon • Circle M, Grand Saline, Texas



For more information contact:
Dimitri Mataragas
214-649-0071 cell
David Caraway
903-802-3373 cell
P.O. Box 751 • 8027 F.M. 1616,
Athens, TX 75751

www.ironlakeranch.com

PPHF

"Prefix of Performance"

PRAUSE POLLED HEREFORD FARMS

1957 Morris Community Rd.
Yoakum, TX 77995-5224

www.prausepolledherefords.com

**Leslie & Gay
Prause**

361-741-6495
361-293-4213

**Robert, Lorna
& Kaci Herman**

361-741-8650
361-293-1533

Still River Ranch

**Better Calving Ease
Better WW/YW
Better Marbling**

Larry Woodson
214-491-7017
larrywoodson@gmail.com
www.stillriverranch.com



TRIPLE L RANCH

BOBBY & JARED LIDE
714 FM 1366 • MEXIA, TX 76667
(P) 254.739.2911 • (CELL) 254.625.3800
JARED (CELL) 254.625.3806

www.tripleblackherefords.com

DOUBLE DIAMOND RANCH

Continuing the tradition

WHITEHEAD HEREFORDS

Proven Bloodlines...Predictable Results!
www.whiteheadherefords.com

Wendee Whitehead
512-970-1595
McDade, Texas central
Rusk, Texas East
email: drwendee@yahoo.com



UTAH

Line One
performance bred Herefords
www.johansenherefords.com

Castle Dale, UT
Jonathan 435-650-8466
Craig 435-820-8490



The next Hereford
America ad dead-
line is Feb. 5th
This is for the
March issue.

WASHINGTON



CX Ranch
Bill and Terrilie Cox
688 Pataha St.
Pomeroy, WA 99347
509-566-7050 cell
cxranch@live.com

Dick & Karen Yoder
8941 Glendale Rd.
Custer, WA 98240
(360) 354-2945

Dale & Tammy Yoder
Katie & Clark
9279 Weidkamp Road
Lynden, WA 98264
(360) 354-6605

Yoricka
Farm, Inc.
Registered Herefords

email: YorickaFm@aol.com

WISCONSIN

Annual Production Sale in April

BAUER
HEREFORDS

Gabe Bauer
608-333-6192 • bauerbulls@gmail.com
S2473 Norwegian Church Rd., La Valle, WI 53941
www.bauerherefords.com



KEVIN L. STORK
KODY L. STORK
626 EAST THIRD
NEW RICHMOND, WI 54017

(715) 381-3770 Kevin
(715) 220-0021 Kody
(715) 246-2580 fax

E-mail: kstork@pressenter.com

LIETZAU HEREFORD
FARM

Harold & Connie Lietzau
Tammy, Dan, Kiara & Austin
Troy, Michelle, Jaydon, Devon & Jocelyn
Taylor & Ty
7477 Iband Ave. • Sparta, WI 54656
Cell 608/633-2875

Generations
of Family
Affair Sale
October
15, 2019



Steve Merry
1840 Co. Rd. CC • Hartford, WI 53027
Steven.Merry@aurora.org • 414-881-5274

Fourth Generation of MERRY Polled
Hereford Breeders — Spanning 115 Years



OWEGO
STOCK FARM
REGISTERED POLLED HEREFORDS

MARVIN ESPENSCHIED FAMILY

(608) 543-3778 12044 State Hwy 78
Cell: (608) 558-3445 Argyle, WI 53504
Email: osf@mhct.net

Thanks to our customers!

WIRTH

Herefords

NEW RICHMOND, WI

Gene & Cheryl Wirth
(715) 247-5217

Lance Brent
(715) 377-6876 (715) 760-1727
www.wirthshowcattle.com



WYOMING

The Berry's **WHERE COWMEN BUY BULLS**

Bull Sale October 21, 2019

Jay and Janice Berry
3049 County Road 225
Cheyenne, WY 82009
(307) 634-5178

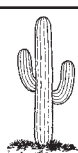
E-mail: jaberryherefords@msn.com
www.WhereCowmenBuyBulls.com



LARGENT
and SONS
Hereford Cattle
Since 1902

• Sale November 21, 2019 •

P.O. Box 66 • Kaycee, WY 82639
(307) 738-2443 or (307) 267-3229
www.largentandsons.com
largentandsons@yahoo.com



McClun's Lazy JM Ranch

Producing problem free
Polled Herefords and Angus.

Sale April 11, 2019

Private treaty sales any time.

Jim & Jerri McClun
1929 Road 60 • Veteran, WY 82243
Ph. 307-837-2524

Jeff & Kari McClun
1930 Road 60 • Veteran, WY 82243
Ph. 307-837-2554 • jkmcclun@wyomail.com

MIDDLESWARTH
RANCH
Registered Herefords
• Torrington, WY •

Jay, Marsha and Jessica
307.532.5427

6MBulls@hughes.net
www.middleswarthherefords.com

GEORGE OCHSNER RANCH INC.
PRIVATE TREATY SALES OF
HEREFORD AND ANGUS BULLS
REGISTERED AND COMMERCIAL BRED HEIFERS
QUALITYBULLS.COM

GEORGE & RUBY OCHSNER
307/532-5892

E-MAIL: OCHSNERRANCH@GMAIL.COM

Blake & Rustin & Steve & Rod & Debbie
Chrissy Britte Roth Dixie Roth Ochsner
Ochsner 307/575-2709 307/532-7191 307/532-2457
307/532-3282

The Livestock Link

Livestock Videoing • Video Sales
• Bid-by-Click Online Sales

605/490-1513
605/210-1956

STICKS & STONES
RANCH

• Gene & Cindy Stillahn and Family •
Christopher, Amy and Trey

3902 County Road 203
Cheyenne, WY 82007
(307) 635-6716 • cell (307) 421-1592
E-mail: gcstick@live.com

THE
NED & JAN WARD
QUALITY PROGRAM

...honest, efficient and predictable Polled Herefords.

Ned, Jan & Bell Ward
247A Decker Road • Sheridan, WY 82801
Phone and Fax 307/672-3248
Ned (c) 307/751-8298 • Jan (c) 307/751-9470
Email: njwardherefords@gmail.com
www.NJWHerefords.com
Annual BULL SALE in March
Bulls • Females • Semen • Embryos



WHITE
Cattle Company

Joel & Karri White

912 Fullerton Avenue
Buffalo, WY 82834
C: 307.217.0367 H: 307.684-7881
whitecattlecompany@gmail.com

Bulls, Females, Embryos & Semen
Available



Starts the
second week of
August
every year!

307/358-2398

wystatefair.com

wystatefair@gmail.com

(Supported by Converse County Tourism.com)

51 HOMOZYGOUS POLLED HEREFORD BULLS

BAR JZ RANCHES

TUESDAY, FEBRUARY 19, 2019

70TH ANNUAL BULL & FEMALE SALE

DVAuction
Broadcasting Real-Time Auctions

1:00 P.M.

THOMAS RANCH SALE FACILITY
16 1/2 EAST OF ONIDA, S.D.*Selling:* 53 Yearling Polled Hereford Bulls

46 Yearling Limousin Bulls • 7 Spring Bred Polled Hereford Heifers

Available Immediately at Private Treaty: 20 fall bred heifers and cows



LOT 6 – BAR JZ PUCKSTER 370F
PUCKSTER x BRUISER
HOMOZYGOUS POLLED

Pictured at 10 months



LOT 11 – BAR JZ LARAMIE 382F
SHEYENNE 3X x GUNNER
HOMOZYGOUS POLLED

Pictured at 8 months



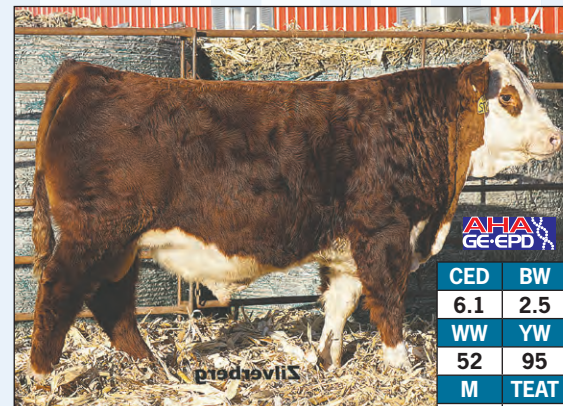
LOT 16 – BAR JZ CONFIDENCE 397F
TRUST 167Y x XEROX 20X
HOMOZYGOUS POLLED

Pictured at 9 months



LOT 19 – BAR JZ EXPEDITE 404F
EXCEDE x 719T
HOMOZYGOUS POLLED

Pictured at 9 months



LOT 23 – BAR JZ SHOCKWAVE 411F
TRUST 167Y x RIB EYE R117
HOMOZYGOUS POLLED

Pictured at 9 months



LOT 25 – BAR JZ STOCK MARKET 414F
TRUST FUND x 719T
HOMOZYGOUS POLLED

Pictured at 8 months



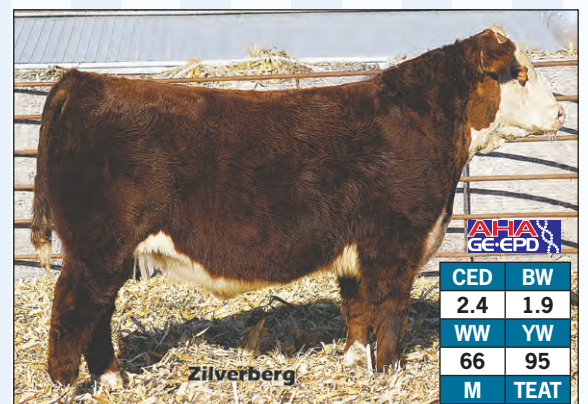
LOT 26 – BAR JZ TRAILBLAZER 417F
PILGRIM x GUNNER
HOMOZYGOUS POLLED

Pictured at 10 months



LOT 31 – BAR JZ PILGRIM 433F
PILGRIM x WORLDWIDE
HOMOZYGOUS POLLED

Pictured at 8 months



LOT 46 – BAR JZ SHINE ON 496F
SLEEP ON x REMEDY
HOMOZYGOUS POLLED

Pictured at 8 months

1ST BREEDING SEASON GUARANTEE • VOLUME DISCOUNTS
FREE DELIVERY 300 MILES ON BULLS • 50 DAYS FREE BOARD ON BULLSVISIT US AT: **WWW.BARJZ.COM**
for catalog and video of sale bulls**J Bar JZ**
Z RanchesDon/Peg/Seth Silverberg
Holabird, SD
605/870-2169 Seth's cell
605/870-1302 Don
605/852-2966 Office
cattle@barjz.comEPDs
12/31/18