

The Largest Privately Owned Hereford Newspaper in North America

The one that's read "from cover to cover." • Visit us on the web at: www.herefordamerica.com

Serving Commercial Cattlemen & Registered Hereford Breeders

Vol. 20., No. 7

Published by: Hereford America, Inc. • 13823 Beaver Creek Place • Reva, SD 57651

April/May 2017

Editorial Comments...

Byron Bayers



Byron Bayers

We have just finished Line One week in Montana. Fort Keogh, Holdens and Coopers have now held their annual Spring sales. The Holden and Cooper sales will again go down in the annals of 2017 Hereford sales as two of the top in the nation. Crowds came from all over the United States, Canada and Mexico to find the bulls and females that they wanted and then bid accordingly to try and buy them. Sadly, the smaller breeders are suffering with the prices from the falling commercial market and

(continued on page 22)

Jill Bayers Hotchkiss



Jill Hotchkiss

What a year it has been. We are almost to the end of our big bull sale run and our last issue of the spring. We've been traveling a lot and our video company, The Livestock Link, has really taken off.

It's been a wild go of things at the bull sales with unusual patterns especially at the early sales. These were affected by the winter weather and depressed cattle markets. The later sales seem to be much better which is encouraging. The big question is what will next year be like.

We are still seeing more commercial people switching over to Herefords which is a great thing in my opinion. Once they realize the results and benefits of hybrid vigor

(continued on page 4)

Rausch Herefords Honored as Top AHA Dams of Distinction Herd for 36th Year



Rausch Herefords, Hoven, SD, has topped the Dams of Distinction List for 36 years in a row. They have registered the most Hereford cattle in the nation the last several years.

The American Hereford Association (AHA) has released the 2016 Dams of Distinction list and once again, Rausch Herefords, Hoven, SD, has topped the list with the most cows meeting the criteria.

According to AHA, the job description for an ideal Hereford cow could be as follows: She should produce a healthy, growthy calf every year; she should calve as a two-year-old, and she should cause her owner absolutely no

(continued on page 3)

South Dakota, Nebraska Top Two States on Hereford Dams of Distinction List

Rank	State	Number			
1	South Dakota	444	11	Wisconsin	69
2	Nebraska	314	12	Wyoming	66
3	Kansas	293	13	Oklahoma	58
4	Montana	150	14	Georgia	45
5	North Dakota	141	15	Illinois	43
6	Missouri	117	16	California	42
7	Idaho	110	17	Virginia	39
8	Texas	105	18	Oregon	37
9	Minnesota	78	19	Colorado	35
10	Iowa	75	20	Utah	24
			20	Tennessee	24

(continued on page 3)

Sales & Events CALENDAR

March

- 29 Ned and Jan Ward
Annual Sale
Sheridan, WY
- 31 Sandhill Farms Bull Sale
Haviland, KS
- 31 Jensen's Elite Fall-Born
Online Heifer Sale

April

- 6 Crittenden Bros. Polled
Herefords Bull and
Female Sale
Imperial, Sask.
- 7 Wilson Lees Value Added
Bull Sale
Kisbey, Sask.
- 8 Knoll Crest Farms Bull Sale
Red House, VA

- 8 Thorstenson Hereford &
Angus Bull Sale
Selby, SD
- 8 Gerlach Herefords and
Vermeulen Angus Bull Sale
Mitchell, SD
- 13 Larsen's Polled Herefords
Bull Sale
O'Neill, NE
- 13 McClun's Lazy JS Ranch
Hereford and Angus
Bull Sale
Torrington, WY
- 15 Stuber Ranch Hereford
Bull Sale
Bowman, ND
- 20-22 Ehlke Herefords Spring
Internet Sale
- 21 Bartling Herefords Sale
Herrick, SD

- 21 Morgan Ranch Bull Sale
Burwell, NE

June

- 16-17 SD Junior Hereford
Field Day
Howard, SD
- 16-18 Illinois Jr. Preview Show
Georgetown, IL
- 23-25 Midwest Regional Jr. Show
Pipestone, MN
- 24 Wisconsin Jr. Hereford
Field Day
Endeavor/Baraboo, WI

July

- 15-21 Junior National Hereford
Expo
Louisville, KY

- 20-23 SD Spotlight Show
Huron, SD

August

- 1-4 Faces of Leadership
Conference
Kansas City, MO
- 10-11 SW Saskatchewan
Hereford Tour
- 15-17 Dakotafest
Mitchell, SD
- 19-20 Nebraska Hereford Tour
Eastern Nebraska
- 26-27 Kansas Hereford Tour
Salina to Concordia area

September

- 14-16 South Dakota Hereford Tour
Western South Dakota
HQ, Deadwood, SD

Subscribe Now! DON'T MISS AN ISSUE!

Canadian & Foreign subscriptions — _____ \$30 U.S. funds, one year
_____ \$55 U.S. funds, two years

U.S. subscriptions —
_____ \$20 - one year, third class _____ \$35 - two years, third class
_____ \$30 - one year, first class _____ \$55 - two years 1st class

(Advertisers placing \$150 or more in advertising for the season will receive a free first class subscription.)

Please let us know if we need to **correct** your address or if your local post office has started using "911 Locator" addresses.

Note: When submitting an address we need to have 3 lines including a PO Box, Route or Street for the second line. Thanks!

Send new or corrected address to:

Hereford America
13823 Beaver Creek Place
Reva, SD 57651

Credit Card Payments

You may pay your subscription or advertising bill online by credit card through our website or by calling us with your credit card information.

Your subscription expiration date is printed above your name on the front page label area. If you wish to receive your paper in a more timely manner or live in a southern state please consider a first class

subscription for faster postal delivery.

For questions call Marc Hotchkiss at 605/866-4495.

If your address changes please be sure to notify us.

Name _____

Address _____

City _____

State _____ Zip _____

Phone _____ E-mail _____

_____ Commercial Breeder _____ Registered Hereford Breeder

_____ Registered Breeder, Other Breed _____ Other _____ Polled
_____ Horned
_____ Both

Signature _____ April/May 2017

(Required for Post Office Regulations)

The official Hereford publication for the states of
South Dakota, North Dakota, Wyoming & Minnesota.

HEREFORD AMERICA

605/866-4495

WWW.HEREFORDAMERICA.COM

Main Office:
13823 Beaver Creek Place
Reva, SD 57651 • Fax: 605/866-4494

PUBLISHED 7 TIMES A YEAR: SEPTEMBER-APRIL/MAY

(Nov/Dec is a combined issue)

by Hereford America, Inc., a family owned & operated business.

Jill and Marc Hotchkiss • Byron Bayers • Taylor Vroman

Jill Hotchkiss - jbh@herefordamerica.com • Cell: 605/490-1409

Marc Hotchkiss - marc@herefordamerica.com • Cell: 605/490-1513

Byron Bayers - bayers@3rivers.net

Byron's Phone: 406/684-5465 • Fax: 406/684-5499

Byron Bayers, PO Box 410, Twin Bridges, MT 59754

Editors: Jill Hotchkiss, Byron Bayers

Ad Design/
Production: Robin Engel, Jill Hotchkiss

Writers: Byron Bayers, Jill Hotchkiss, B. Lynn Gordon,
Mary Ridder, Kayla Sargent, Tom Granzow

Editorial Assistant: Taylor Vroman

Proofreaders: June Hotchkiss, Taylor Vroman

Website Development: Robin Engel, Taylor Vroman, Jared Peterson
Coordinator: Jill Hotchkiss

Opinions expressed by our editors, columnists, letters to the editor or other writers or news sources are not necessarily those of the management. We welcome your comments, ideas, suggestions and letters to the editor. All correspondence (including e-mails) must be signed or must clearly identify the name of the author.

Hereford America shall not be liable for slight changes or typographical errors that lessen the value of an advertisement. Hereford America's liability for errors or omissions in connection with an advertisement is strictly limited to publication of the advertisement in any subsequent issue or the refund of any monies paid for the advertisement. Advertising placed after deadline must be approved by the Editors. All materials for such advertising must be in by date specified by Editor. Late charges may apply. If an ad is placed and all materials are not received by date needed all attempts will be made to compile the ad from available materials. Any cancellations after deadline are subject to full charges for the ad.

Hereford America reserves the right to refuse advertising to anyone.

All contents Copyright 2016 by Hereford America, Inc., except Trademarks and Copyrights otherwise noted in which Hereford America, Inc. disclaims any proprietary interest.

Dams of Distinction...

(continued from page 1)

problems. These ideal cows are recognized as Dams of Distinction. A Dam of Distinction is the standard by which all Hereford cows can be judged.

In order to be honored as a Dam of Distinction, a cow must have

- 1) Weaned a calf born since 1/1/15.
- 2) Produced at least 3 calves.
- 3) Initially calved at 30 months of age or less.

4) Had an interval between the first and second calves of no greater than 400 days. In addition, a 370-day calving interval must have been maintained after her second calf. The longer initial calving interval allows breeders to calve two-year-old heifers prior to the mature cow herd.

5) Every calf produced that was born before June 30, 2016 must have weaning records submitted to the Hereford Performance Program.

6) A progeny average 205-day adjusted weaning weight ratio of at least 105.

These are the cows that meet the highest standards of commercial cattle production. The cow must do her job, but also her owner must manage the herd correctly to give her the opportunity to excel. Only a small portion of active cows is recognized. All heifers have the potential of being a Dam of Distinction, but only a small percentage fit the job description of an ideal cow year in and year out.

The following 2016 Dams of Distinction list recognizes 2,542 Hereford cows from 650 Hereford performance herds in 40 different states.

Top 20 Breeders — Dams of Distinction

Rank	Owner	Number of Dams		
1	RAUSCH HEREFORDS, HOVEN, SD	128	10	HAWKS HEREFORDS, HOWES, SD 22
2	VAN NEWKIRK HEREFORDS, OSHKOSH, NE	57	10	BEERY LAND & LIVESTOCK CO., VIDA, MT 22
3	UPSTREAM RANCH, TAYLOR, NE	35	10	ELKINGTON POLLED HEREFORDS, IDAHO FALLS, ID 22
4	ALEXANDER D MIH, CHANUTE, KS	33	14	RICHARD & SHIRLEY THOMAS, GOLD CREEK, MT 21
5	MONAHAN CATTLE CO, HYANNIS, NE	28	14	HILLSVIEW FARMS, EUREKA, SD 21
6	VJS POLLED HEREFORDS, HAYS, KS	27	14	BARTLING HEREFORDS, HERRICK, SD 21
7	FAWCETTS ELM CREEK RANCH, REE HEIGHTS, SD	26	17	ALFRED SCHUTTE & SONS, GUIDE ROCK, NE 20
8	SHAW CATTLE CO INC, CALDWELL, ID	25	17	OLEEN BROTHERS, DWIGHT, KS 20
9	DUVALL POLLED HEREFORDS, LOCKWOOD, MO	24	19	MRNAK HEREFORDS, BOWMAN, ND 19
10	RIDDER HEREFORD RANCH, CALLAWAY, NE	22	20	4V DOUTHIT HEREFORD RANCH, ST. FRANCIS, KS 18

**This
Spring
Baldy and
Hereford
calves sired
by
Rausch
Hereford
bulls are
showing
up in over
25 states
across
America.**



The Baldy and Hereford calves are sired by semen from Rausch proven sires or from their Performance tested sons.

Semen is available from generations of both proven calving ease Herd bulls for heifers and from high performance bulls for mature cows.

**FOR SALE - A good selection of Bulls
(yearling & two-year-olds - Polled & Horned)
and Females by Private Treaty**

E-mail: rauschherf@rauschherefords.com

Please call, write or e-mail for more information:

RauschHerefords.com

14831 Hereford Road • Hoven, SD 57450

(605) 948-2146 or 2157 or 2375

Jerry Shannon Vern & Joel

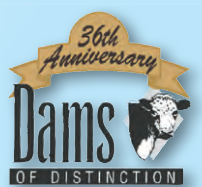
www.RauschHerefords.com

Located 2 miles west of Hoven on Hwy. 20 and 47



Calves at Van Newkirk Herefords, No. 2 on the Dams of Distinction list.

Photo by Cyndi Van Newkirk



America's No. 1 Dams of distinction herd.
(Based on efficiency.)

Advertisers Index

Bartling Herefords	5
Berrys, The	32
Fisher Herefords	32
Friedt Herefords	9
Greater Omaha	7
Handel Marketing	22
Hereford America	19
Hoffman Herefords - SD	15
L-W Herefords	13
Leddy Herefords	18
McClun's Lazy JS	6
Midway Polled Herefords	4
Morgan Herefords	6
Rausch Herefords	3
SW Saskatchewan Tour	20
Stuber Ranch	16-17
The Livestock Link	21
Thorstenson Herefords	11
Tricky's Herefords	18

South Dakota Hereford Tour Sept. 14-16, 2017

HQ will be in Deadwood.

For more information contact
SDHA managers
Mark and Jeanne Johnson
605/957-5036
jeanne.johnson@yahoo.com

Jill's Editorial...

(continued from page 1)

in their crossbreeding programs, I think they will be dedicated to crossbreeding with Herefords.

One couple who reads our paper, Roy and Karin Schiley, sent me this comment last month. I was glad to see a commercial producer sum it up:

"We wanted to relate to you our experience what Hereford bulls (on black cows) have done for our ranches in the last 12 years. We started using one-third Hereford bulls the first couple years. Since then we have increased the bull battery to 75% Hereford bulls. First we saw a 40 lb. increase when we weaned. Also our pregnancy rates improved 5-7%. Plus the BWF heifers have a lot of interest. Thanks to the Olerich, Thorstenson, Rausch herds."

Typically hybrid vigor or heterosis, is the free boost you get from crossing two different breeds of cattle and it is most often noticed in increased weaning weights, longevity as noted above.

The university people have a formula for it but roughly breeders see a 10% or higher increase in weaning weights on the first cross plus added longevity. This heterosis is retained in the F-1 which explains the popularity of the black baldy female.

One definition of heterosis is, "an unexpected and often beneficial deviation from the average of the two parents."

Simply put, crossbreeding with Herefords can give you free pounds at weaning and more longevity, with

little effort. Maternal heterosis also boosts milk production.

It's long been known that the F-1 baldy female is one of the best crosses around. She's not called the Queen of the Range for nothing.

We started our season in September with news of a bad fire in Wyoming which affected several families and burned over 25,000 acres leaving death and destruction in its path. Fortunately most of those people have recovered fairly well even though their lives will never be the same.

When I was at a sale in Nebraska in early March we had the news from the auctioneer that there were terrible and numerous fires south of us in Colorado, Texas, Kansas and Oklahoma. I had driven about 600 miles to get to the sale and the wind had blown 30-40 mph during the entire trip. Turns out that wind was blanketing an area from Texas to South Dakota for two to three days, leaving devastation in its path. Wildfires were uncontrollable and the storm system spawned at least 32 tornadoes.

By now you have all heard about the devastation in the states of Colorado, Texas, Oklahoma and Kansas from the wildfires. Almost a million acres burned, 7 people died and countless head of livestock either died or were so badly burned they had to be put out of their misery. The horrible aftermath for people in those areas is incomprehensible.

The situation reminds me a lot of the 2013 Atlas snow storm in this area. Such devastation in terms of livestock

loss, then the domino affect afterward of taking care of those that are still alive, needing hay and supplies, replacing fencing, obtaining water and rebuilding homes and lives. The emotional toll is unfathomable.

Then there were the human deaths. Young people just trying to do what they could to stop the flames but were overtaken by them.

None of these people can be replaced and their families carry on. Those families who came through it without loss of life are incredibly thankful.

The historic and well-known Gardiner Angus Ranch near Ashland, KS, lost over 500 head of cattle.

All of their family members came through the blaze unharmed which is absolutely amazing. There were some close calls during the fire, including one point where Greg had to retreat from the smoke, not knowing if his brother Mark and his wife were okay. About half an hour later a fireman came through and told Greg they were fine. Imagine the feeling of relief for this entire family.

Mark and Greg Gardiner and their families try not to think about the cattle that were lost, the product of 132 years of breeding, but focus on what God did to spare their family members and their livelihood. Amazingly, all of their donor cows were spared which will help them rebuild within two to three years, according to Greg.

Of the 48,000 acres of land on the Gardiner Ranch, 42,000 of those were grass. Virtually all of the grass acres burned in the fire.

Their regular April 1 sale will go on but it certainly won't be normal.

Mark Gardiner says, "we learn a lot in these situations about who we are as people...and people are good...especially people in agriculture and our customers, neighbors and friends." We've had some losses and challenges but the sale cattle are in phenomenal shape and they are ready to go."

Fortunately the ranching community did not wait long to start helping after this most recent disaster. For Gardiners it was their customers and friends who were the first ones to arrive. For others in the four-state area it was not only local people but people from all over the United States, much like it was during Winter Storm Atlas in 2013. Many of the Atlas victims felt a need to "give back" what they had received just 4 short years ago with many loads of hay and fencing materials coming from the Dakotas as well as other areas.

There are a number of relief funds set up which are listed on the National Cattlemen's Beef Association website or give them a call for more information: (303)694-0305, www.beefusa.org.

I encourage you to help these people any way you can.

Let's all have a safe, fire-free summer. Thanks to all of our readers and advertisers for making our 20th year a good one!

—JBH

Midway Polled Herefords

Since 1953

Private Treaty Bull Sale

Selling: 38 Two Year Old Bulls

30 Registered Hereford Yearling Heifers available in February.

Also 20 BWF and Black Yearling Heifers for sale.

Our cattle come from our herd of 190 registered Polled Herefords. We specialize in producing rugged, range-raised, two-year-old bulls. Our females are bred for longevity and trouble-free udders. We also produce commercial Angus and black-baldy females for sale.

Catalog available mid January

Call for catalog or view online at www.HerefordAmerica.com

For more information contact:

Midway Polled Herefords

Visitors always welcome.

7480 26th St. • Sheyenne, ND 58374 • midwayph@gondtc.com
2.5 miles south and 5.5 miles east of Sheyenne
Bill and Karen Smith (701) 996-3300 Cell: (701) 302-0254
Jake and Whitney Burkhardtsmeier Cell: (701) 650-8906
Doug and Ann Smith (701) 996-3111



TOP QUALITY WORKING CATTLE BRED AND FED
WITH THE COMMERCIAL CATTLEMAN IN MIND.

South Dakota State University Invests in the Future with New Cow-Calf Unit

By Courtney Johnson

South Dakota State University (SDSU) Cow-Calf Research and Teaching Facility uses top of the line technology to educate their students on the reproduction and the well being of cattle.

The new facility in full cost around \$6 million and officially opened September 16, 2016. The majority of the facility was paid for with donations that came from many different directions. Over 400 individuals donated to the new facility. The largest corporate donors were Zoetis, CHS and First Dakota National Bank. There were 40 families that made very generous five figure donations as well.

"The reasons we donated to SDSU is because South Dakota is leading in seed stock production and we felt it was important we invested in the most

leading technology. We invested in the students so they can use the cutting edge technology and take what they learned back to their operations. I worked at the cow-calf unit when I was in college at SDSU and I knew it was the same (old) facility that I worked in and it was time for an improvement." said Fred DeRouchey, a donor to the facility.

The facility at South Dakota State is just one of five facilities of this kind in the United States. Making this one of its own is the combined aspects that the five others have individually. When adding the mono slope, the indoor working facility and the Insentec feeding system it makes SDSU different than the others.

"It's really very unique and could be called a one of a kind to have it all in one place and so close to campus." said



The new Cow Calf Research and Teaching Facility gives students and faculty the opportunity to teach and conduct research on a more accurate level.

Dr. Cody Wright, Professor of Animal Science at South Dakota State University.

The facility is designed to help teach the students about proper cattle handling and treatment techniques. The 80-seat classroom will provide students with a fully equipped classroom that includes wireless internet, projector and computer system. Having the classroom available at the unit makes



Dr. Cody Wright, Professor of Animal Science at South Dakota State University, gives a tour of the new facility to his Cow Calf Management lab and explains the facility as a whole.

labs easier and more efficient so professors can teach more information in a period of time without travel. Producer meetings and industry events can also take place in this classroom.

At the Cow-Calf Research and Teaching Facility they have installed an Insentec system. This system includes a scale that the feed bunks and waterers are mounted on top of. By doing this the system can measure intake on individual cattle making research easier to conduct. Each animal has an electronic ear tag that provides the Insentec system with their own individual data. The data that is recorded includes consumption, time of day, amount of time spent in the feeder and the number of visits to the feeders and waterers. The Insentec system can also limit intake to help conduct more efficient research projects.

The new facility is more functional

(continued on page 6)

BARTLING Herefords

The **Livestock Link**

Videos will be online at
TheLivestockLink.com

• **SALE** •
Fri., April 21, 2017

Free Lunch at 11:30
1:00 PM (CDT) at the ranch
Herrick, SD

DVAuction
Broadcasting Real-Time Auctions
www.DVAuction.com

See
you
there!

SELLING
55 Yearling Bulls, 2 Two-Year Old Bulls
& 45+ Heifers

SIRES:

R 0141 North Star 27A • CL 1 Domino 0141 IET x R 0041 North Star 40U • BW 5.3 WW 77 YW 121 Milk 42 M&G 80
KB L1 Domino 396A • KB L1 Domino 121Y x KB L1 Domino 844U • BW 4.1 WW 55 YW 93 Milk 28 M&G 56
R 2Y North Star 56B • YV 34W Major Mark Lad 2Y x R 157K North Star 54U • BW 1.3 WW 39 YW 55 Milk 21 M&G 41
R 0141 North Star 28B • CL 1 Domino 0141 ET x R 102J North Star 18M • BW 5.6 WW 67 YW 118 Milk 42 M&G 75
KB L1 Domino 463B • HH Advance 9027W x GB L1 Domino 175E • BW 2.4 WW 45 YW 76 Milk 30 M&G 52
KB L1 Domino 408B • HH Advance 1038Y ET x S Mile Wide 28U ET • BW 3.1 WW 50 YW 78 Milk 22 M&G 47
K Advancer Lad 165 • GO Torrington W16 x GO Abe T32 • BW 3.1 WW 73 YW 105 Milk 29 M&G 65
KB L1 Domino 1107 • HH Advance 5104R x Montana Miss 760T • BW 3.9 WW 65 YW 114 Milk 33 M&G 66

For catalog or
more info
call or text
Matt at
605/830-1714.

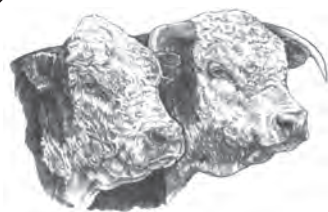
Bartling Herefords

Matt Bartling • (605) 775-2275 • (605) 830-1714 cell

29045 349th Ave. • Herrick, SD 57538

Directions: 4 1/2 miles east of Burke, SD on Burke Lake Rd. & 1/2 mile north

See you
there
Fri., April 21,
2017



Range raised. Quality genetics.

Selling 25 stout two-year-old and
coming fall two-year-old Hereford Bulls

April 21, 2017 • 1:00 p.m.

Burwell Livestock Market, Burwell, NE



Morgan Ranch, Inc.
Morgan Cattle Partners, LLC

83589 Gracie Creek Ave., Burwell, NE

Ronny 308-750-4454

Pat 308-214-0772

Roger 308-750-4453

hereford@nctc.net • www.morganranchshowcattle.com

(continued from page 5)

regarding cattle handling. The layout of this new facility helps with the fluency of running cattle through the facility. The Silencer chute hangs from load bars so it keeps it clean and out of moisture. The chute can be lowered and sit solid on the floor to weigh cattle. It hangs over the flush system so a thorough clean-up of the chute is simple with a pressure washer. The flush system under the alley makes it a very easy and quick clean up.

The bud box/double alley system works very well. Several pens are available outside of the barn for easy sorting and efficiency when running cattle through.

The calving barn is also a multi-use area as it can be cleared out for events, set up larger pens for judging team



Kevin VanderWal, manager of the Cow Calf Research and Teaching Facility, explains to a South Dakota State University class the protocols and steps taken to give proper care to newborn calves.



The Insentec feeding system provides amount of consumption, time of day, amount of time spent in the feeder and the number of visits to the feeders and waterers.

practice or can be set up for calving. These are just a few items it can be used for. The sides of the east part of barn have curtains that can be lowered and raised when desired. They can be lowered for colder weather and raised when it is warmer. Four heaters keep the area from freezing in the winter and overhead fans help newborns dry off more quickly since the majority of calves born at the facility are born in February.

This facility provides South Dakota State's 600 Agriculture and Biological Science undergraduate students with hands-on education in a state-of-the-art facility in the areas of beef nutrition, management, breeding, genetics, reproduction, cattle evaluation, seed-stock marketing and low stress handling techniques.

"I think the biggest benefit that will come out of this place will be realized by the students, not only the student employees, but also those that get to use this facility for class, Little International, judging team activities, etc. They will be exposed to the feeding system and equipment and gain a more thorough understanding of the impor-

tance of the research that is done here," said Kevin VanderWal, manager of the Cow Calf Research and Teaching Facility.

At the cow-calf facility they have seven student employees. These employees complete tasks ranging from feeding cattle, maintaining healthy quality of cattle, learning how to operate cattle, help with calving out cows and much more. These students are learning from one of the most efficient cattle handling systems in the country.

"The new cow-calf unit has furthered my passion for agriculture and the livestock industries by being able to work with the most efficient, newest technology to help SDSU conduct research to learn how to create the best possible diets and environment for our cattle. Working with such intelligent educators here at SDSU is enjoyable and reassuring to know I'm getting the best possible education that I could offer myself," said Jeremiah Johnson, student employee of the Cow Calf Research and Teaching Facility.

There are three research projects that are being conducted right now at the facility. The first is comparing or-

ganic and inorganic minerals on heifers. They will conduct research to first see how it affects average daily water intake and feed intake. They will also check to see the attainment of puberty and the conception rates. Another project they are working on is the different levels of carinata in steers. They will watch how it affects performance and growth all the way to slaughter. There are regulations on carinata in diets so the steers that go over the regulation will not be put into the food chain but will demonstrate the performance they achieved with the higher levels of carinata. They are also collecting feed and water intake on their bulls.

The old unit didn't have the capability to have extension meetings or a classroom for labs as well as no permanent working facility. The indoor working facility helps with flexibility of labs because we don't have to depend on the weather. Also at the old unit research was almost impossible except for the eight little pastures by the airport. With the Insentec system we can take the numbers we receive from there and do more research said Wright.

The public is welcome to tour the new Cow Calf Research and Teaching Facility. Call the Animal Science Department at South Dakota State University to set up a time and date to tour the new facility.

Editor's Note:

Carinata (Brassica carinata) is a new oilseed that shows great potential for the Midwest. This oilseed has been selectively bred for high oil concentration ideal for biofuels and bio-oil production. Carinata meal is the co-product resulting from the oil extraction of the seeds. This meal has high protein content (36-48% crude protein), highly degradable in the rumen, and with a total digestibility of the protein a comparable to soybean and linseed meals (Lawrence et al., 2015).

Carinata meal however has high concentration of a glucosinolate, known as sinigrin. Its potential use as a feedstuff is limited to 10% or less of cattle diets because a possible reduction in palatability result of the bitter taste caused by glucosinolate degradation. Glucosinolates also could cause health problems related to the thyroid gland function causing growth issues. Decreasing the glucosinolate content would allow for more flexibility in the use of carinata meal in cattle diets. Recent research by the SDSU Dairy and Food Science department demonstrated that ensiling carinata meal with alfalfa haylage or corn silage was an effective method to reduce the glucosinolate content without affecting silage fermentation (Rodriguez-Hernandez et



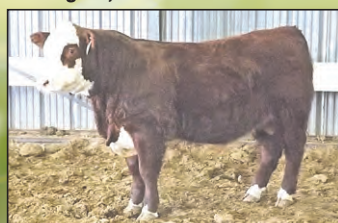
Student employee Jeremiah Johnson tags a newborn calf.

McCLUN'S LAZY JM RANCH
Spring Sale APRIL 13, 2017
Torrington Livestock Facility
Torrington, WY - 307-532-3333

Selling:

- 12 Two-Year-Old Polled Hereford Bulls
- 30 Yearling Polled Hereford Bulls
- 5 Fancy Yearling Heifers
- A few select Two-Year-Old Cows with Calves
- 40 Yearling Angus Bulls and
- 5 Fancy Yearling Angus Heifers

81D
3/5/16 by
Logical
Choice
55W



Jim, Jeri & Jean
1929 Road 60
Veteran, WY 82243
307-837-2524
307-534-5141

Jeff & Kari
1930 Road 60, Veteran, WY
307-837-2554
307-575-2113
jkmccclun@wyomail.com

Kody, Tyler,
Mason & Kanin
307-575-3519
dakota.mccclun@
hotmail.com

(continued on page 8)



- Proud Packer of Certified Hereford Beef® for 18 Years
- Ten consecutive growth years in pounds sold and carcasses certified
- More pounds per capita of Hereford Beef is sold in this region (retail and restaurants) than anywhere else in the US

PAYING \$25.00 PER HEAD PREMIUM

on a daily basis over the everyday market for
qualifying finished Hereford, Red, and Black Baldy cattle.

Please Contact

Brad Ellefson (605) 216-6010

(Hereford Feeder Cattle Coordinator)

For All Other Inquiries Contact:

Head Finished Cattle Buyers

Leon Spronk (507) 220-0192 Chris Peterson (402) 380-9616

**WE NEED YOUR HELP NOW
MORE THAN EVER TO HELP FURTHER
DEVELOP RETAIL AND RESTAURANT
BUSINESS THROUGH OUR HEREFORD
BEEF DISTRIBUTOR PARTNERS.**



Final Farewell

Mary Lou Knippling

Mary Lou Knippling, 78, of Gann Valley, SD, passed away February 8, 2017 at Sanford USD Medical Center in Sioux Falls, SD.

On March 8, 1938, Mary Louise was born at home in Kennebec, SD to Nels and Margaret (Lippens) Johnson. At age 3 the family moved to Mitchell, SD. She attended Norte Dame Catholic grade school and high school in Mitchell, SD. She attended Presentation College in Aberdeen, SD. She walked everywhere and didn't learn how to drive until her husband Donald taught her.

Mary Lou met Donald Knippling at Ray's Western Wear in Chamberlain, SD. She was working at the Abstract Company there at the time. Donald asked her out and to supper at the Legion Club that evening. They were married on May 16, 1959 and to this union five children were born. She kept the accounting books for the ranch corporation for over 40 years. She was very active in the planning and preparation of the annual bull sale.

Mary Lou was an amazing cook and often cooked for a table full of hired hands. Every grandkid fought for a loaf of her raisin bread. She was an avid reader, loved to discuss politics and always helped with election polls every year. She was active in Altar Society, parish women, 4-H and taught catechism. She often out fished her husband, Donald. Mary Lou loved her grandkids and great-grandkids and was so proud of all the accomplishments and loved to tell everyone about them.

Grateful to have shared in her life was her husband, Donald of 57 ½ years; children: Allan (Mary) Knippling of Gann Valley, Suzanne (Bill Davis) Ferguson of Sioux Falls, Jeanne Knippling of Bemidji, MN, Tim (Brandi) Knippling of Huron, Jackie (Mike) Dalzell of Ekalaka, MT; 22 grandchildren; and 14 great-grandchildren.

She is preceded in death by her parents: Nels and Margaret Johnson;

(continued from page 6)

al., 2016).

Two methods used to extract oil from carinata seeds are solvent extraction and cold-press extraction which result in different oil content in the meal (2.5% vs. 20% of ether extract). As cold-press is a lower cost extraction method with less chemical use compared to solvent extraction, it may be more attractive processing method for local carinata growers. However, the high fat content in the carinata meal from cold-press extraction could affect fermentation and potentially decrease the degradation of glucosinolates when cold-pressed carinata meal is ensiled with forages. Thus the objective of recent research was to test if the meal fat content or extraction method affected silage fermentation and glucosinolate degradation.

(Source: University of Nebraska, Lincoln.)

sisters: Colleen Nesladek and Carol Byrne; three granddaughters: Natalie, Delaney and Sydney, son-in-law: Durward "Woody" Lang.

In lieu of flowers the family has requested memorials directed to South Dakota Right to Life, 314 S Central Ave, Pierre, SD 57501.

Reck Funeral Home of Miller has been entrusted with Mary Lou's arrangements. Visit www.familyfuneral-home.net

Erna Melcher

Erna Melcher, 94, of Page, NE died Feb. 28, 2017, at Alpine Village in Verdigre, NE.

Erna was born on Dec. 21, 1922, to Otto and Grace (Bridge) Schwager in Orchard, NE. She was one of seven children. She attended grade school one half mile from their home and graduated from Orchard High School in 1939. After graduation, she stayed at her parent's farm home and helped with house work and cooking.

Erna married Harold Melcher on March 11, 1942, in Neligh, NE. She and Harold lived on the Melcher Ranch until Harold passed away in 2007.

Erna remained on the ranch until April 2016, when she went to Alpine Village in Verdigre.

Erna and Harold were blessed with three sons. She kept busy by keeping up with the sons and their activities, along with Harold's playing ball. She enjoyed going to all the Hereford activities along with Harold and sons as they grew up showing all their Hereford calves. She also enjoyed all the Hereford people who stopped in and looked at their Hereford cattle.

In later years, she was always outside taking care of her yard and flowers. She loved being with family and friends and, most of all, her grandchildren and great-grandchildren.

Erna is survived by her three children James (Susan) Melcher of Papillion, Thomas (Lorraine) Melcher of Hot Springs, AR, and Donald (Jean) Melcher of Page; six grandchildren Lisa (Kevin) Keyes, Crystal (Jason) Beissenherz, Kay (Matt) Storck, Kevin (Sherry) Melcher, Abby (Ryan) Jacobsen, Matt Melcher (fiancé Kristin); nine great-grandchildren; and one sister-in-law Gladys Fink of Orchard.

She was preceded in death by her husband Harold, her parents, three brothers, three sisters and one grandson Jay Dee Melcher.



Greater Omaha Showcases CHB for Distributors in ND



Booth at the Dickinson, ND show.

On March 15th, June Dunn from Greater Omaha and Tim Norsten of CHB, set up a promotional booth for a distributor food fair in Dickinson, ND.

Hereford breeders Gary and Kirsten Friedt from Mott, ND and Duane Keller from New Salem, ND, were on hand to give distributors and food service managers their perspective on the breed and quality of the beef.

"I had a great time yesterday helping promote Certified Hereford Beef with Tim Norsten of CHB and June Dunn of Greater Omaha Packing. Both are fantastic supporters of CHB and what we as breeders are accomplishing in raising this wonderful product!" said Kirsten Friedt.



June Dunn, Field Specialist, Greater Omaha Packing discusses the Certified Hereford Beef products with potential customers.



Duane Keller (left), John Woolery (vice president of sales at Sysco), Kirsten Friedt, Ken Norsten (CHB) and Gary Friedt.



Ken Norsten carves off a nice piece of CHB for a customer to taste.

Sale Reports

— CORRECTED —

Sioux Empire Hereford Sale
Sioux Falls, SD
January 26, 2017
Auctioneer: Chisum Peterson

16 Bulls — \$3,172
5 Females — \$3,190

Top Bulls:

Lot 14, LCX Perfecto Power 2D, 3/14/16 by LCX Perfecto 11B ET from Crane Herefords, Mitchell, SD to Scott Cornish, Indian River, Ont., \$8,250.

Lot 35, from Circle S Ranch, Stewartville, MN to Francis Kane, Montrose, SD, \$5,300.

Lot 16, HH Victor J19, 3/1/16 by JDH Victor 719T 3Z ET from Huwaldt's Herefords, Randolph, NE to David Cooper, Mondamin, IA, \$4,250.

Lot 28, SH Calhoun C403, 4/4/15 by Harvie Over Under 30Y from Schmidt Herefords, Pipestone, MN to Paul Persing, Sioux Falls, SD, \$4,000.

Top Females:

Lot 2, LCX Harley Zoey 8D, 4/2/16, By LCX Harley Davidson 118 ET from Larry Crane to Ed Bright, LeGrand, CA, \$6,250.

Lot 7, J&J QZ Tianna 4R 4C, 2/20/15, by MSU TCF Revolution 4R from Jim Hanson, Comfrey, MN to Clarence Caraway, Lake Benton, MN, \$2,800.

— CORRECTED —

Fawcett's Elm Creek Ranch
Ree Heights, SD
February 13, 2017
Auctioneer: Lynn Weishaar

34 Two-Year-Old Bulls — \$4,882
38 Yearling Bulls — \$4,763
11 Yearling Angus Bulls — \$4,341
5 Registered Hereford Bred Heifers — \$4,350
80 Open F1 Heifers — \$1,281

Top Yearling Hereford Bulls:

Lot 12, ECR 311 Encore 6106, 2/25/16 by KCF Bennett Encore Z311 ET to TSR Cattle Co., Elkton, SD and Ollerich Bros., Clearfield, SD, \$14,000.

Lot 31, ECR 2109 Domino 6223, 3/3/16 by CL 1 Domino 2109Z to Upstream Ranch, Taylor, NE, \$12,500.

Lot 39, ECR Undisputed Bob 6302, 3/8/16 by CL 1 Domino 2109Z to Behm Hereford Ranch, Burlington, ND, \$9,500.

Lot 17, ECR 311 Encore 6120, 2/25/16 by KCF Bennett Encore Z311 ET to Wagner Herefords, Redfield, SD, \$9,000.

Lot 26, ECR Undisputed 6188, 3/16/16 by UPS Undisputed ET to Hexad Farms, Parker, SD, \$7,250.



Fawcett Sale Topper — ECR 311 Encore 6106, 2/25/16 by KCF Bennett Encore Z311 ET sold to TSR Cattle Co., Elkton, SD and Ollerich Bros., Clearfield, SD, for \$14,000.

Lot 14, ECR 3304 Undisputed 6110, 2/24/16 by UPS Undisputed ET to Cody Vollmer, Presho, SD, \$6,750.

Lot 41, ECR Bar John 6322, 3/12/16 by Bar JZ Show Of Force 005Z to Cody Vollmer, \$6,000.

Top Two-Year-Old Hereford Bulls:

Lot 89, ECR AL 2029 Advance 5372 ET, 3/21/15 by HH Advance 2029Z ET to Gary and Cecile Ringgenberg, Columbia, SD, \$13,000.

Lot 81, ECR 2029 Advance 5235, 3/5/15 by HH Advance 2029Z ET to Empire Ranch, Moorcroft, WY, \$7,500.

Lot 94, ECR Wastin Time 5428, 3/24/15 by RST Times A Wastin 0124 to Jack Nagel, Linton, ND, \$7,000.

Lot 85, ECR Bar John 5294, 3/13/15 by RST Times A Wastin 0124 to Jack Nagel, \$6,750.

Lot 71, ECR 2109 Excel Domino

5074, 2/7/15 by CL 1 Domino 2109Z to Jack Nagel, \$6,500.

Lot 103, ECR 394 Domino 5519, 4/4/15 by CL 1 Domino 394A to Don Hight Partnership, White River, SD, \$6,500.

Lot 77, ECR 2109 Dakota Domino 5202, 3/1/15 by CL 1 Domino 2109Z to John Kayl, Waterbury, NE, \$6,250.

Lot 75, ECR 2141

Domino 5144, 2/8/15 by CL 1 Domino 2141Z 1ET to John Kayl, \$6,000.

Top Registered Hereford Bred Heifers:

Lot 110, ECR 2109 Dominette 5165, 2/24/15 by CL 1 Domino 2109Z to Mark Landgren, Bartlett, NE, \$5,500.

Lot 107, ECR 177 Dominette 5040, 1/27/15 by GB L1 Domino 177R to Lane Peterson, Holabird, SD, \$4,250.

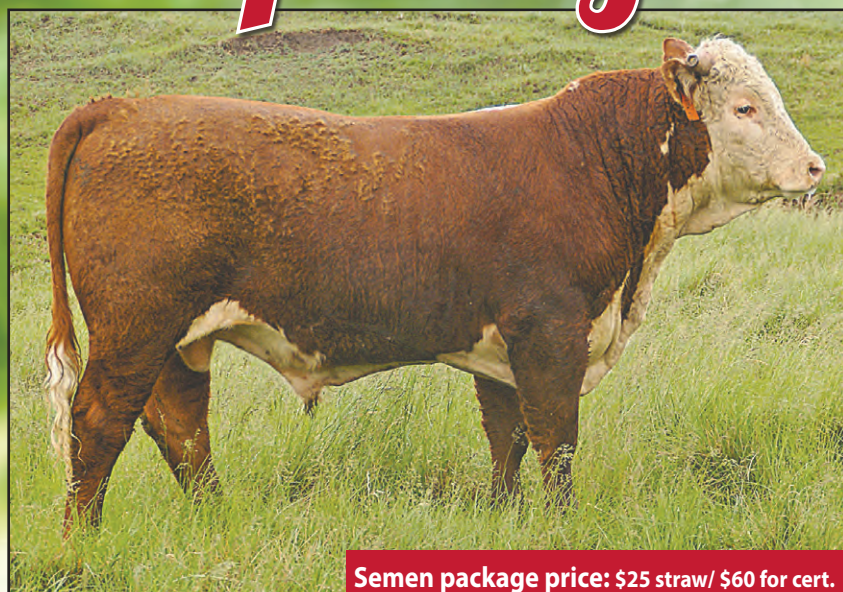
Lot 108, ECR 2109 Dominette 5101, 2/15/15 by CL 1 Domino 2109Z to Landon Laible, Howard, SD, \$4,000.

Lot 109, ECR Miss Flo 5133, 1/27/15 by DKF RO Cash Flow 0245 ET to Blume Show Cattle, Redfield, SD, \$4,000.

Lot 11, ECR TAW Genetic Lady 5360 ET, 3/20/15 by RST Times A Wastin 0124 to Eric Knock, Tea, SD, \$4,000.

(continued on page 10)

Spring Semen Sales



Semen package price: \$25 straw/ \$60 for cert.

SR SCOPE 53A DLF,HYF,IEF

Sire: CL 1 Domino 0130X 1ET • Sire of Dam: CJH Harland 408

CED 4.1 BW -0.1 WW 54 YW 88 M 31 MG 58 CEM 3.2 MCW 86 UDDR 1.05 TEAT 1.06 SC 1.4
 CW 67 FAT 0.016 REA 0.29 MRB 0.26 BMI\$ 24 CEZ\$ 19 BII\$ 20 CHB\$ 30

A powerful bull with exceptionally good numbers. Marketed through ORlgen.

Two-year-old Bulls & Bull Calves for sale Private Treaty this Spring

FRIEDT HEREFORDS

Gary, Kirsten and Aaron Friedt
Megan and Dusty Dukart • Lindsey and Drew Courtney

8733 55th St. S.W., Mott, ND 58646 • gfriedt@hotmail.com • www.friedtherefords.com • 701-824-2300 • 701-290-7231 Gary • 701-290-7230 Megan



Semen package price: \$25 straw/ \$60 for cert.

FH NAVARRO 242 MD DLF,HYF,IEF

Sire: UPS Navarro • Sire of Dam: CL 1 Domino 9126J

CED 3.7 BW 2.6 WW 59 YW 103 M 33 MG 63 CEM 2.1 MCW 95 UDDR 0.98 TEAT 0.93 SC 1.6
 CW 73 FAT 0.007 REA 0.64 MRB 0.15 BMI\$ 24 CEZ\$ 18 BII\$ 20 CHB\$ 32

One of the high sellers in our 2013 sale to longtime commercial customers Delvin and Kelli Dukart. This Navarro son had great performance and comes from a really strong maternal cow family.

Sale Reports

(continued from page 9)

Ulrich Herefords Bull Sale February 21, 2017

Balog Auction, Lethbridge, AB
Auctioneer: R.C. (Bob) Balog

30 Coming 2 Year Olds — \$6,922
2 Long Yearlings — \$4,375
32 Total Lots — \$6,762

High Selling Two Year Olds:

Lot 77, AGA 18Z Zoom Stan Creditor 77C by AHA 18Y Zoom Standard 18Z to YV Ranch, Airdrie, AB, \$17,000.
Lot 47, AGA 48Y Super Coach 47C BY AGA 77J Superman 48Y to Braun Ranch Herefords, Simmie, SK, \$10,500.
Lot 73, AGA 28Z Co-Pilot Sport 73C by AGA 60W Banner Sport Zeal 28Z to Wilson Ranch, Maple Creek, SK, \$10,000.

Milligan Herefords Philip Livestock Auction, Philip, SD Auctioneer: Dace Harper

23 Yearling Bulls — \$2,461

Top Lots:

Lot 7, by RJ 1056 Harland 908, Alvin Manning, Lost Springs, WY, \$4000.
Lot 6, by Grandview CMR Hawk L1 ADV 918 sold to Truett Fitch, Philip, SD, \$3,500.
Lot 12, by RJ 1056 Harland 908 to A. W. Manning \$3,250.

Gant Polled Hereford and Angus Geddes, SD February 24, 2017

(Re-scheduled due to winter storm)
Auctioneer: Chisum Peterson
Report and pictures by Phil Eggers

17 Two-Year-Old Hereford Bulls — \$3,617
25 Two-Year-Old Angus Bulls — \$3,466

2 Year Old Hereford Bulls:

Lot 10, Gant Rebellion 358C, 4/4/15, by Bar JZ Rebellion 474X to Dennis Beckman, White Lake, SD, \$7,000.
Lot 3, Gant Target 407C, 4/5/15, by R on Target 5523 to Glen Gerlach, Dimock, SD, \$5,000.
Lot 22, Gant Revolution 353C, 4/5/15, by MSU TSF Revolution 4R to Joel Wolter, Woonsocket, SD, \$5,000.

2 Year Old Angus Bulls:

Lot 52, Gant Concensus 529, 3/27/15, by Styles Consensus P21 to Bob Anderson, Winner, SD, \$4,750.
Lot 46, Gant Concensus 535, 4/7/15,

by Styles Consensus P21 to Robertson Stock Farm of Wagner, SD, \$4,750.

Kreth Hereford and Angus Mt. Vernon, SD February 25, 2017 Auctioneer: Joe Goggins Report by Phil Eggers

39 Yearling Angus Bulls — \$3,680
22 Yearling Hereford Bulls — \$3,648
10 Open Hereford Heifers — \$1,995

Top Yearling Hereford Bulls:

Lot 68, K Right Answer 6113D ET, 1/26/16, by SR Right On 2203 Z ET to MJ Herefords, IA, \$7,250. (Possession after June 1st 2017).
Lot 54, K Right Answer 613D, 1/7/16, by SR Right On 2203 Z ET to Stahly Ranch, \$6,000.
Lot 70, K Right Answer 6110D, 1/26/16, by SR Right On 2203 Z ET to Johnson Herefords, \$5,000.
Lot 66, K Domino Classic 604D, 1/3/16, by GB L1 Domino 177R to Ken Glanzer, Bridgewater, SD, \$4,750.
Lot 64, K Bulls Eye 6148D, 2/2/16, by UU Turning Point to Ron Baker, Mt. Vernon, SD, \$4,500.

Top Yearling Angus Bulls:

Lot 22, K Earnan 679, 1/20/16, by Connealy Earnan 076E to Jim Hornig, Huron, SD, \$10,500. (Possession after June 1st 2017).
Lot 13, K Earnan 686, 1/20/16, by Connealy Earnan 076E to John Jones, Mt. Vernon, \$8,000.
Lot 3, K Earnan 656, 1/16/16, by Connealy Earnan 076E to Scott Losing, Alpena, SD, \$5,750.
Lot 46, K Harvester 6101, 1/24/16, by SAV Harvester 0338 to John Vanderpol, Platte, SD, \$5,500.
Lot 1, K Sierra Cut 601, 1/2/16, by Connealy Sierra Cut 84B to Miskimins Ranch, Mitchell, SD, \$5,000.
Top Open Hereford Heifers:
Lot 76, K Lady Extra 6119D, 1/27/16, by SR Right On 2203Z ET to Pete Thompson, Mitchell, \$3,000.
Lot 79, K Lady Extra 695D, 1/23/16, by SR Right On 2203Z ET to MJ Herefords, \$2,300.
Lot 82, K Lady Washington 6208D, 2/22/16, by K 88X Ribeye 390 to Camden Zomer, Tabor, SD, \$2,200.
Lot 80, K Lady Turning Point 6180D, 2/14/16, by UU Turning Point to Leroy Scott, Highmore, SD, \$2,100.

Lot 78, K Lady Washington 6236D, 3/8/16, by K 88X Ribeye 390 to Gary Bathke, MN, \$2,000.

Colyer Herefords and Angus Feb. 27, 2017 Bruneau, ID Auctioneers: Butch Booker & Kyle Colyer

129 Hereford Bulls — \$9,041
71 Angus Bulls — \$5,401
4 F1 Bulls — \$5,313
16 Open Hereford Heifer Calves — \$2,434
1 Pick Flush — \$24,000
228 Total Lots — \$7,234

Top Hereford Bulls:

Lot 29, C 1311 5280 Lad 6077 ET, 1/2 Interest & 1/2 Possession, Grand Meadow Farm and Beckman, TX, \$105,000.
Lot 45, C 1311 5280 Lad 6105 ET, 3/4 Interest and Full Possession, Micheli Herefords, WY and GKB Cattle, TX, \$120,000.
Lot 48, C 2052 5280 Lad 6110 ET, 3/4 Interest and Full Possession, Bowling Herefords, OK, \$50,000.
Lot 54, C 1311 5280 Lad 6121 ET, 3/4 Interest and Full Possession, Jibben Polled Herefords, TX, \$45,000.
Lot 46, C 2052 5280 Lad 6107 ET, Rogan Herefords, TN, \$40,000.
Lot 12, C 105Y Catapult 6046, GKB Cattle, TX, \$37,000.
Lot 58, C 1311 5280 Lad 6128 ET, 3/4 Interest and Full Possession, Curry Herefords, OK, Prairie Rose Cattle, IL and Dennis & Heather Birdsall, NY, \$32,000.
Lot 76, C 1008X Regal 6170, Bowling Herefords, OK, \$20,000.
Lot 40, C 2052 5280 Lad 6096 ET, 3/4 Interest and Full Possession, Morrell Ranches, CA, \$18,000.
Lot 130, HH C Golden Oak Outcross 529 ET, GKB Cattle, TX, \$18,000.
Lot 68, C 1008X 88X Payday 6152 ET, TI Ranches, NV, \$15,500.
Lot 75, C 1311 5280 Lad 6167 ET, 3/4 Interest and Full Possession, Barry Hereford Ranch, OR, \$15,000.
Top Angus Bulls:
Lot 198, CCC Black Granite 6067, Burgess Angus Ranch, ID, \$20,000.
Lot 179, CCC Courage 6033, TFI Limited Partnership, ID, \$11,500.
Lot 197, CCC Black Granite 6052, Jaca Livestock, ID, \$10,000.
Lot 172, CCC Tour of Duty 6009, Wilson & Wilson, ID, \$9,500.
Top F1 Bull:
Lot 143, X5305 (Miles McKee x Bismarck daughter), Open Box Arrow Ranches, NV, \$9,000.
Top Hereford Heifer:
Lot 154, C 5280 Bailout Lass 6165, Beckman, TX, \$4,250.

Lot 150, C Sentinel Lady 6101, BoBo Cattle, ID, \$3,500.

L Bar W Cattle Co & Sidwell Ranch Columbus, MT March 1, 2017

Auctioneer: Joe Goggins

45 bulls — \$3,745
3 Females — \$2,433

Top Bulls:

LW 4163 Domino 606D, 1/12/16, by CL 1 Domino 4163B 1ET to Berry Herefords, Cheyenne, WY ½ interest, ½ possession, \$7,500.
SR 88X Rawhide 1601, 2/19/16 by WCC/BCC 0054 88X Rawhide 201 to Castleberry Inc., Ekalaka, MT, \$5,250.
LW 8050 Advance 510C ET, 2/11/15 by HH Advance 8050U ET to Vandenberg Ranch, Roundup, MT, \$5,250.
SR MR Thor 1500, 2/17/15 by THR Thor 1331Y to Castleberry Inc., Ekalaka, MT, \$5,250.
Top Females:
LW 28X Churchill Lady 500C, 1/6/15 by Churchill Sensation 028X, to Churchill Cattle Co., Manhattan, MT, \$3,250.

Calgary Bull Sale March 1 & 2, 2017 Century Downs, Calgary, AB Auctioneer: R.C. (Bob) Balog Judges: Allen & Shanna Jones

Grand Champion

Lot 139, SGC 814Y Diamond Amigo 45C by JNHR 414B Domino 814Y
Buyer: Fenton Hereford Ranch Inc., Irma, AB
Consignor: Crone Herefords, Hardisty, AB, \$26,000.

Reserve Grand Champion

Lot 124, BCD 74Y Denzal ET 626D by Remitall-West Game Day ET 74Y
Buyer: Mrnak Hereford Ranch, Bowman, ND, \$9,000.
Consignor: Dallas Farms Inc., Bowden, AB

104 Two Year Old Hereford Bulls — \$7,170

8 Yearling Hereford Bulls — \$11,375
2 Angus Bulls — \$5,125
114 Lots — \$7,429
10 Ranch Horses — \$7,870

Top Two Year Old Hereford Bulls:

Lot 128, BCD 26Z Cinch 509C by RUT 10N Ribstone Lad 26Z, from Dallas Farms Inc., Bowden, AB to Tide Creek Herefords, Jenner, AB / Terril Pierson, Wardlow, AB, \$17,500.
Lot 2, JNHR Ribstone 128C by JNHR 63W Ribstone 89Z from JoNomn Hereford Ranch, Clyde, AB to Crone Herefords, Hardisty, AB, \$16,500.
Lot 14, LBH 438Z Standard 285C by LBH 268P Standard 438Z from Lilybrook Herefords Inc., Claresholm, AB to Walter Brydon, Birtle, MB, \$13,500.

**Next Issue of Hereford America is
SEPTEMBER
Ad Deadline is August 5**

Lot 86, YV 915W Silver Struck 111C by YV Star Struck 915W from YV Herefords, Airdrie, AB to Little Fort Herefords, Little Fort, BC, \$13,500.
 Lot 96, SNS 40W Western Lad 69C by PAHL 3S Westpoint 40W from SNS Herefords, Airdrie, AB to Brad Corbiell, \$13,500.
 Lot 98, SNS 40W Western Lad 57C by Pahl 3S Westpoint 40W from SNS Herefords, Airdrie, AB to Clinton & Darryl Brost, Consul, SK, \$12,500.
 Lot 101, SNS 40 Western Lad 25C by Pahl 3S Westpoint 40W from SNS Herefords, Airdrie, AB to Anderson Ranches Ltd, \$12,500.
 Lot 78, WB Barking ET 506C by WB Bear Mark ET 35N from McKenzie Herefords, Warner, AB to Garrett Ranch, Landis, SK, \$11,500.
 Lot 90, YV 148X Super Silver 48C by LBH 102T Super Rib 148X from YV Herefords, Airdrie, AB to Clinton & Darryl Brost, Consul, SK, \$11,500.
 Lot 66, Remitall-W BNC Hot Pursuit 47C by TH 512X 719T Playmaker 14Z from Remitall West Polled Herefords, Olds, AB to Little Fort Herefords, Little Fort, BC, \$11,000.
Top Yearling Bulls:
 Lot 52, Hirsche Herefords and Angus to JK Fraser Cattle, \$26,500.
 Lot 139, Grand Champion Bull, SGC 814Y Diamond Amigo 45C by JNHR 414B Domino 814Y from Crone Here-

fords, Hardisty, AB to Fenton Hereford Ranch, Irma, AB, \$26,000.
 Lot 95, SNS 10A Western Lad 2D by SNS 40W Western Lad 10A from SNS Herefords, Airdrie, AB to Wyatt Farms, Arrowwood, AB, \$13,500.
 Lot 85, YV 15Z Standard Zam 12D by YV 35X Zam 15Z from YV Herefords to Murrar Andrews, Moose Jaw, SK, \$11,000.

Jensen Bros. Sale
March 2, 2017
Courtland, KS
Auctioneer: Jim Birdwell

62 Bulls — \$3,985

Top Sellers:

KJ BJ 319X Laramie 619D ET, 2/23/16, by GKB 88X Laramie B293 to Rod Garman, Watts, OK, \$18,000.
 KJ BJ 319X Laramie 599D ET, 2/19/16, by GKB 88X Laramie B293 to WRK Herefords, Heartwell, NE, \$15,000.
 KJ BJ 167X Catapult 587D ET, 2/16/16, BY CRR 719 Catapult 109 to Ron Hallbauer, Carlinville, IL, \$12,000.
 KJ BJ 719Z Leader 665D ET, 3/22/16, by R Leader 6964 to WRK Herefords, \$10,000.

KJ BJ 319X Laramie 649D ET, (continued on page 12)



Grand Champion Bull, Calgary Bull Sale — SGC 814Y Diamond Amigo 45C by JNHR 414B Domino 814Y, consigned by Crone Herefords, Hardisty, AB, and sold to Fenton Hereford Ranch Inc., Irma, AB, \$26,000.



Reserve Grand Champion, Calgary Bull Sale — BCD 74Y Denzal ET 626D by Remitall-West Game Day ET 74Y, consigned by Dallas Farms Inc., Bowden, AB, purchased by Mrnak Hereford Ranch, Bowman, ND, \$9,000.

Thorstenson HEREFORD RANCH

Production Sale

Sat., April 8, 2017 • 1:00 (CDT)

At the Ranch • 30491 131st St., Selby, SD

Selling 57 Bulls Hereford & Angus
Plus 15 Registered Hereford Heifers

— SALE BULLS HAVE HAD NO CREEP —



LOT 6176 - THR THOR 6176D Reg# 43719428
 Sire: Pyramid 3027 Domino 1109 - MGS: THR Thor 4029

BW 72 lbs.
 205 wt. 708 lbs.
 BW +0.3
 WW +58
 YW +95
 Milk +28
 M&G +57
 REA +.74
 Marb +.27



LOT 6040 - THR THOR 6040D Reg# 43719347
 Sire: Pyramid 3027 Domino 1109 - MGS: SR Saga 529W

BW 72 lbs.
 205 wt. 682 lbs.
 BW -0.4
 WW +46
 YW +81
 Milk +31
 M&G +54
 REA +.34
 Marb +.29



LOT 6128 - THR THOR 6128D Angus
 Sire: Pyramid Longmire 3224 - MGS: Final Answer

BW 90 lbs.
 205 wt. 800 lbs.

SIRES OF SALE BULLS:

PYRAMID 3027 DOMINO 1109 reg# 43185506
 NJW 37U 100W TRUST 113Z reg# P43311890
 NJW 47X 8Y HOMEGROWN 51A reg# P43385169
 BAR JZ AUDACIOUS 294A reg# P43381464
 Next year's sire: PYRAMID HOMEGROWN 4151

DVAuction

Bill & Darin Thorstenson Bill - H: 605.649.7940 C: 605.845.6108
 wpthorstenson@venturecomm.net
 Darin - H: 605.649.1972 C: 605.321.6416



Videos & catalog on our website
www.thorstensonherefordranch.com

KJ BJ 319X Laramie 649D ET, 3/15/16, by GKB 88X Laramie B293 to Frenzen Polled Herefords, Fullerton, NE, \$8,000.

KJ BJ 58Z Buchanan 606D ET, 2/20/16, by CRR 719 Catapult 109 to Rod Garman, \$7,500.

KJ BJ 167X Catapult 590D ET, 2/16/16, by CRR 719 Catapult 109 to Windhorst Polled Herefords, Syracuse, NE, \$7,000.

Ravine Creek Ranch

Huron, SD

March 4, 2017

Auctioneer: Chisum Peterson

8 Two-Year-Old Bulls — \$3,562
28 Yearling Bulls — \$3,205
28 Reg. Yearling Heifers — \$1,961
9 Commercial Hereford Heifers — \$1,250
50 BWF F-1 Heifers — \$1,346

Top Bulls:

Lot 3, RV Collateral 6947 ET, 3/12/16 by NJW 78P Twentytwelve 190Z ET to Craig Thieman, Winner, SD, \$5,250. Lot 29, RV 2012 Trust 6261, 3/18/16 by NJW 78P Twentytwelve 190Z ET to Jim Opsahl, Carpenter, SD, \$5,250. Top Reg. Heifer:

RV X51 Lady Bennett 6044, 3/11/16 by KCF Bennett Revolution 6044 to Tricky's Herefords, Winfred, SD, \$5,750.

Harrell Hereford Ranch **38th Spring Bull Roundup**

and

Harrell-Mackenzie

Quarter Horses

19th Performance

Horse Prospect Sale

March 6, 2017

Baker City, OR

Auctioneers: C.D. "Butch" Booker and Rick Machado
Sale Mgmt.:
United Livestock Brokers, Inc.

HARRELL HEREFORDS
92 Yearling Bulls — \$5,438
38 Two Yr. Old Bulls — \$5,389
130 Total Bulls — \$5,423
30 Reg. Open Heifers — \$2,823
9 Fall Bred Cows — \$2,878
25 Comm'l Heifer Calves — \$1,510

HARRELL-MACKENZIE
QUARTER HORSES
13 Gelding & Filly Performance
Horse Prospects-started — \$5,915
1 Broodmare — \$2,750

Cattle and horses sold to 15 states and Canada.

Top Yearling Bulls:

H5 177 Domino 6233, Feb. 2016 son

of GB L1 Domino 177R to Buford Ranches, OK, \$21,000.

H5 10Y Hometown 6194, Feb. 2016 son of NJW 73S W18 Hometown 10Y to Stroh Hereford Ranch, ND, \$18,000. H5 177 Domino 6148, Feb. 2016 son of GB L1 Domino 177R to Big Valley Herefords, CA, \$15,000.

H5 10Y Hometown 6113, Feb. 2016 son of NJW 73S W18 Hometown 10Y to Foss Ranch, OR, \$13,000.

H5 3114 Advance 6159, Feb. 2016 son of H5 0011 Advance 3114 to Buford Ranches, OK., \$13,000.

H5 3114 Advance 6103, Feb. 2016 son of H5 0011 Advance 3114 to Lilybrook Herefords, Alberta, \$11,000.

H5 2185 Domino 6112, Feb. 2016 son of H5 9131 Domino 2185 to Sonoma Mountain Herefords, CA, \$9,000.

H5 177 Domino 6192, Feb. 2016 son of H5 177 Domino 6192 to Table Mountain Cattle Co., OR., \$9,000.

H5 432 Advance 648, Feb. 2016 son of H5 1147 Advance 432 to Lee Livestock, NV, \$8,500.

H5 2185 Domino 6214, Feb. 2016 son of H5 9131 Domino 2185 to LNK Ranches, OR, \$8,500.

Top Two-Year-Old Bulls:

H5 3178 Advance 5279, Mar. 2016 son of H5 161 Advance 3178 to Darryl Ray, OR, \$7,500.

Top Yearling Heifers:

H5 Ms 8Y Homegrown 6132, Feb. 2016 dgr. of NJW 73S W18 Homegrown 8Y to Bo Bo Cattle, WA, \$6,000. H5 Ms 10Y Hometown 6283, Feb. 2016 dgr. of NJW 73S W18 Hometown 10Y to Bo Bo Cattle, \$5,500.

H5 Ms 177 Domet 681, Feb. 2016 dgr. of GB L1 Domino 177R to Buford Ranches, OK, \$5,250.

Top Bred Cows:

H5 Ms 5216 Domet 4182, Feb. 2014 dgr. of UPS Domino 5216 to Joseph Garcia, GA, \$3,500.

Commercial Hereford Heifers:

5 hd. draft to Lindsay Eldred, WA, \$1,900 each.

Harrell - Mackenzie Quarter Horses:

HR Payin Navajo, 2015 sorrel gelding sired by Payin Doc (Paid By Chic) to VanOrden Cattle, ID, \$11,000.

Santa Fe Rooster 502, 2015 bay gelding sired by Rooster Dox Frost (Gallo Del Cielo) to Steve Hammers, Colo., \$8,500.

Payin Sun Time Bell, 2015 sorrel filly sired by Payin Doc to BB Performance Horses, OR, \$7,250.

Gallo Peptachileta, 2015 bay roan filly sired by Gallo Escarchado (Gallo Del Cielo) to Thiele Ranch, WA, \$6,900.

Like Sterling Star, 2014 sorrel gelding sired by Star Like Freckles (Grays Starlight) to Steve Hammers, CO, \$6,750.

HR Payin Monte, 2015 sorrel gelding sired by Payin Doc to Sexton Ranches, OR, \$6,500.

HR Boons Doc, 2015 sorrel gelding sired by Payin Doc to C&M Herefords, NM, \$6,000.

Classic Winston Two, 2015 buckskin sired by Two Eyed Red Dude (Two

Eyed Red Buck) to Parks Ranch, CA, \$6,000.

S&S Polled Herefords

Guide Rock, NE

March 7, 2017

Auctioneer: Jim Birdwell

39 Bulls — \$4,079
38 Bred Heifers — \$2,864

Top Bulls:

Lot 15, S&S Stud 28C, 3/21/15 by Churchill Stud 3134A to Ross Bartlett, \$10,000.

Lot 18, S&S Stud 34C, 3/22/15 by Churchill Stud 3134A to Ross Bartlett, \$9,500.

Lot 37, S&S 15Z Sonic 64C, 4/10/15 by S&S Sonic 15Z to Mark Bartlett, \$5,700.

Lot 35, S&S Yankee 65C, 4/10/15 by SHF Yankee R117 Y52 ET to Jim Lewis, \$5,500.

Lot 38, S&S Asset 67C, 4/13/15 by BBH 743 Asset 337Z to Mark Jeffrey, \$5,500.

Lot 5, S&S Sonic 15Z 5C, 3/10/15 by S&S Sonic 15Z to Dave McDonald, \$5,200.

Lot 26, S&S Yankee 44C ET, 3/25/15 by SHF Yankee R117 Y52 ET to Russ Burnow, \$5,000.

Lot 3, S&S Stud 22D, 3/16/16 by Churchill Stud 3134A to Connie Shipman, \$5,000.

Lot 19, S&S Asset 35C, 3/22/15 by BBH 743 Asset 337A to McDonald Ranch, \$5,000.

Top Bred Heifers:

Lot 50, S&S Miss Real 260C, 3/18/15 by SHF Yankee R117 Y52 ET bred to Kickstart, sold to Carr Ranch, TN, \$5,000.

Lot 49, S&S Patty 257C, 3/17/15 by KJ 986R Polled Solution 668ZET bred to Kickstart, sold to Carr, \$4,500.

Lot 67, S&S Miss Royal 305C, 4/4/15 by BBH 743 Asset 337A, bred to Vincent, sold to Sattery Farms, \$4,500.

Braun Ranch Ready Bull Sale

March 10, 2017

Simmie, SK

Auctioneer - Donnie Peacock

26.5 Yearling Bulls — \$6,658
15 Two Year Old Bulls — \$5,000
5 Purebred Open Heifers — \$4,100
19 Commercial Heifers — \$1,683
65.5 Lots \$4,639

High Selling Hereford:

Lot 4, BR 028X Sensation ET 101D by Churchill Sensation 028X to Brost Land and Cattle, Irvine, AB, \$29,000 (1/2 Interest).

Lot 1, BR 15Z Doc Holliday ET 139D by BR 9279 Extra Deep 15Z to Wilson Bros., McCord, SK, \$18,000.

Lot 2, BR 157 Deluxe Model by BR 9279 Extra Deep 15Z to Clifford and Keri-Ann Pogany, Creston, BC, \$14,500.

High Selling Hereford Heifer:

Lot 47 BR 58Y Superior Lass 43D by BR 4W Stanmore 23A to Tide Creek Herefords, Jenner, AB, \$5,500.

Tricky's Herefords

Madison, SD

March 11, 2017

32 Bulls — \$3,000

Top Lots:

Lot D71, Trickys Rev A34-4R D71, 4/7/16 by MSU TCF Revolution 4R to Tom & Greg Wettlaufer, \$5,000.

Lot D46, Trickys Trust Z74-100W D46 (horned), 3/28/16 by NJW 73S M326 Trust 100W ET to Jon Molstad, Ramona, SD, \$5,000.

Lot D68, Trickys X51-W13 D68, 4/4/16 by KCF Bennett Revolution X51 to Tom & Greg Wettlaufer, \$4,750.

Lot D78, Trickys X51-X32 D78 (homo polled), 4/10/16 by KCF Bennett Revolution X51 to Scott Kalousek, Westington Springs, SD, \$4,250.

Lot D74, Trickys X51 A17-D74, 4/8/16 by KCF Bennett Revolution X51 to Dave Hanson Meckling, \$4,250.

Lot D36 4250 Ron & Keith Nelson, Madison.

Lot D50, Trickys Revolution X37-4R D50, 3/28/16 by MSU TCF Revolution 4R to Alan Schaefer, Chester, \$4,000.

Lot D14, Trickys Sensation B30-028X D14, 3/8/16 by Churchill Sensation 028X to Bob Becker, Oldham, SD, \$4,000.

I-29 Bull Run

Sioux Falls, SD

March 11th, 2017

Auctioneer: Chisum Peterson
Report by Phil Eggers

29 Yearling Hereford Bulls — \$3,300

3 Two Year Old Bulls — \$4,167
12 Yearling Angus Bulls — \$3,283

23 Open Hereford Heifers — \$1,930

7 Hereford Cows — \$2,929

10 Commercial Cows - \$1,165

89 Open Commercial Heifers - \$1,163

Yearling Hereford Bulls:

Lot 35, Sleepy Twenty Twelve 670 ET, 3/20/16, by NJW 78P Twenty Twelve 190Z ET, purchased by Corey Johnke, Madison, SD, \$7,250.

Lot 36, Sleepy Twenty Twelve 677 ET, 3/26/16, by NJW 78P Twenty Twelve 190Z ET, purchased by Kenny Gordon, Hitchcock, SD, \$6,000.

Lot 45, TSR Red Bull D209, 2/17/16, by Churchill Red Bull 200Z, purchased by Kevin Foster, Estelline, SD, \$5,000.

Lot 57, S16 99U Bristol 58D, 2/25/16, by Churchill Red Bull 200Z, purchased by J&J Hanson Herefords, Comfrey, MN, \$4,750.

(continued from page 12)

Lot 60, S16 CB4 Butler 61D, 2/27/16, by Churchill Sensation 028X, purchased by Russ Krumvieda, White Lake, SD \$4,000.

Lot 72, SPH 12W Cash Flow 6D, 2/22/16, by DKF RO Cash Flow 0245 ET, purchased by Jason Williamson, Garretson, SD, \$4,000.

Two Year Old Hereford Bulls:

Lot 78, SPH 5T Cracker Jack 15C ET, 02/07/2015, by AH JDH Cracker Jack 26U, purchased by Gene Rybinski, Hendricks, MN, \$5,000.

Lot 80, SPH 9001 Joe 47C ET, 03/17/2015, by H Dimaggio 2094 ET, purchased by Atkins Family Farms, Tea, SD, \$4,500.

Yearling Angus Bulls:

Lot 21, Sleepy Gunflint 603, 1/22/16, by Riverbend Peerless 001, purchased by Kenny Gordon, Hitchcock, SD, \$4,750.

Lot 26, Sleepy Counsel 676 ET, 3/15/16, by EXAR Counsel 1016B, purchased by Joel Zweep, Garretson, SD, \$4,000.

Lot 28, Sleepy Monument 683 ET, 3/16/16, by R5 Monument 087, purchased by Kenny Gordon, Hitchcock, SD, \$3,750.

Lot 24, Sleepy Tour of Duty 678 ET, 3/15/16, by R B Tour of Duty 177, purchased by Dustin Skaare, Hitchcock, SD, \$3,500.

Lot 33, Sleepy Summit 634, 3/9/16, by Hall Summit 421, purchased by Dustin Skaare, Hitchcock, SD, \$3,500.

**Tegtmeier Polled Herefords
Burchard, NE**

**32 Bulls — \$3,365
33 Females — \$2,892
65 Lots — \$3,124**

Top Bulls:

Lot 2, CT Rocket 22D by Loewen C&L 4B CT Right On ET, \$6,000, Ron and Regan Raub, Frankfort, KS.

Lot 13, CT Bookmark 142C by CT Bookmark 181X ET, \$5,250, Jonas Larsen, Beatrice, NE.

Lot 1, CT Wildcat 8D by C ETF Wildcat 4248 ET, S&S Polled Herefords, Guide Rock, NE, \$4,750.

Top Females:

Lot 50, CT Miss Right On 58C, Messi Hart Farm, Waukomis, OK, \$5,800.

Lot 61, UCG 8Y 1T Rosette 3C ET, Bill Dugan, Greeley, NE, \$5600.

Lot 65, CT Miss Sugar 66D, by KCF Bennett Encore Z311 ET, Loewen 29 Group, Waukomis, OK, \$5,000.

Holden Herefords

March 13, 2017

Valier, MT

Auctioneer: Joe Goggins

120 Yearling Bulls — \$10,635

26 Fall Bulls — \$10,490

146 Bulls — \$10,610

8 Spring Bred Cows — \$9,563

4 Fall Heifer Calves — \$4,563

8 Fall Bred Cows — \$5,321

7 Fall Bred Cows — \$5,321

17 Spring Yearling Heifers — \$5,235

**2 Pick of the Flush
Yearling Heifers — \$14,750**

**Top Selling
Bulls:**

Lot 6007D, HH Advance 6007D ET, 12/29/15 by CL 1 Domino 4208 to Harrison Land & Cattle, Arapaho, OK, \$85,000.

Lot 6009D, HH Advance 6009D ET,



Holden Sale Topper — At \$85,000, HH Advance 6007D by CL 1 Domino 4208 hit the top mark for buyer Harrison Land & Cattle, Arapaho, OK.

12/29/15 by HH Advance 4105B to Cooper Hereford Ranch, Willow Creek, MT, \$60,000.

Lot 6250D, HH Advance 6250D ET, 1/28/16 by HH Advance 3297A to Flying S Herefords, Dallas, TX, \$55,000.

Lot 6065D, HH Advance 6065D, 1/6/16 by HH Advance 1013Y to B&D Herefords, Claflin, KS, \$30,000.

Lot 6193D, HH Advance 6193D ET, 1/19/16 by HH Advance 3006A to Jamison Herefords, Quinter, KS, \$30,000.

Lot 5345, HH Advance 5345C, 8/15/15 by HH Advance 3297A to Dufur Herefords, Caddo, OK, \$30,000.

Top Female Lots:

Pick of the flush yearling heifers: Flying S Herefords, Dallas, TX, \$17,000.

Top Yearling Heifer: L Bar W Cattle Company, Absarokee, MT, \$14,000.

Top Bred Cow:

Lot 3075A to Flying S Herefords, Dallas, TX, \$13,500.



Holden sale ring with Lot 6007.

(continued on page 14)

L BAR W Cattle Company

Line One Hereford Cattle

Thank You to all of our buyers
for making our first production sale such a great success!
Semen Packages Available of these Sires & Private Treaty Bulls Available.



HH Advance 5044C ET

(Owned with Harrison Cattle Co, & Churchill Cattle Co)

BW	WW	YW	M	CHB
2.0	69	108	34	\$39



CL 1 Domino 402B

BW	WW	YW	M	CHB
2.9	64	95	34	\$27



HH Advance 4126B

BW	WW	YW	M	CHB
2.2	62	95	32	\$29



Churchill TSC First Rate 6206D

(Owned with Harrell Herefords, Texas Sturdance Cattle & Churchill Cattle Co)

BW	WW	YW	M	CHB
0.4	56	102	40	\$41

We hope to see you in March of 2018 for our 2nd Annual Production Sale!

Carl Loyning • 406-328-4095 • 406-425-2484(c) • cdloyning@gmail.com • www.lbarw.com

(continued from page 13)

Cooper Hereford Ranch
March 14, 2017
Willow Creek, MT
Auctioneer: Joe Goggins

81 Yearling Bulls — \$10,966
12 Cows — \$13,083
20 Yearling Heifers — \$6,125

Top Bulls:

Lot 6128, CL 1 Domino 6128D 1 ET, 1/14/16 by CL 1 Domino 386A to Churchill Cattle Company, Manhattan, MT; Stuber Ranch, Bowman, ND; Krebs Ranch, Gordon, NE; and L Bar W Ranch, Absarokee, MT, \$155,000.

Lot 6187D, CL 1 Domino 6187D, 1/29/16 by HH Advance 4067B to Van Newkirk Herefords, Oshkosh, NE, \$67,500.

Lot 6153D, CL 1 Domino 6153D 1 ET, 1/21/16 by CL 1 Domino 412B, to L Bar W Cattle Company, \$25,000.

Lot 635D, CL 1 Domino 635D 1 ET by CL 1 Domino 412B to O.J. Finlinson, Delta, UT, \$19,500.

Lot 6167D, CL 1 Domino 6167D 1 ET by CL 1 Domino 215Z to Troy Miller, Cheyenne, OK, \$19,000.

Lot 6118, CL 1 Domino 6118D 1ET, 1/12/16 by HH Advance 4067B ET to Buford Ranches, \$18,000.

Lot 660, CL 1 Domino 660D 1ET, 1/8/16 by GB L1 Domino 311W to Joe Hanson Herefords, \$17,000.

Lot 6104, CL 1 Domino 6104D, 1/11/16 by CL1 Domino 4168B 1ET to Jim Baker Herefords, Rapid City, SD, \$16,000.

Lot 6163, CL 1 Domino 6163D, 1/24/16 by CL 1 Domino 215Z to Jamison Herefords, Quinter, KS, \$16,000.

Lot 602, CL 1 Domino 602D, 12/31/15 by CL 1 Domino 402B to Hermann Ranch, Lemmon, SD, \$15,000.

Top Bred Females:

Lot 1179Y, Montana Miss 1179Y, 3/23/11 by CL 1 Domino 7100T to L Bar W Cattle Company, \$35,000.

Lot 161Y, to L Bar W Cattle Company, \$30,000.

Lot 3175, CL 1 Dominette 3175A, 4/10/13 by CL 1 Domino 1161Y to Pete Loehr, Peoria, IL, \$17,500.

Lot 148, CL 1 Domino 148Y, 1/9/11 by CL 1 Domino 9125W 1ET to Holden Herefords, Valier, MT, \$16,000.

Top Yearling Heifers:

Lot 6201D, CL 1 Dominette 6201D, 2/2/16 by CL 1 Domino 215Z to L Bar W Cattle Company, \$15,000.

Lot 6184, CL 1 Dominette 6184, 1/29/16 by CL 1 Domino 215Z to L Bar W, \$12,000.

Pick of the Flush:

Lot 633D, CL1 Domino 412B x 148Y to Harrison Cattle Company, Arapaho, OK, \$17,500.

Lot 690D, CL1 Domino 412B x 148Y to Harrison Cattle Co., \$12,000.



Cooper Sale Topper — CL 1 Domino 6128D 1ET by CL 1 Domino 386A brought a commanding \$155,000. Buyers were Churchill Cattle Co., Manhattan, MT; Stuber Ranch, Bowman, ND; Krebs Ranch, Gordon, NE; and L Bar W Ranch, Absarokee, MT.

Evenson Angus
37th Annual Production Sale
March 16, 2017
Lemmon, SD
Auctioneer: Lynn Weishaar

58 Yearling Angus Bulls — \$3,698
38 Fall Angus Bulls — \$4,296
21 Fall Bred Heifers — \$1,914
70 Commercial Heifers — \$1,081

Top Yearling Bulls:

Lot 629, Evenson Stetson 100 X 629, to Dorwin Howe, Hettinger, ND, \$10,000.

Lot 668, Evenson Top Cut 668, to Eric Arneson, Meadow, SD, \$7,250.

Lot 689, Evenson Freedom 689, to Neidermans Ranch, Morristown, SD, \$7,000.

Top Fall Bulls:

Lot 5407, Evenson Top Cut 5407, to Eric Arneson, \$8,000.

Lot 5422, Evenson Top Cut 5422, to Wade Henderson, Lodgepole, SD, \$7,500.

Lot 5408, Evenson Top Cut 5408, to Jeff Maier, Morristown, SD, \$6,750.

Black Hills Stock Show
Hereford Sale
Rapid City, SD

Auctioneer: Lynn Weishaar

42 Bulls — \$3,806
11 Females — \$2,510

Top Bulls:

Lot 54, K Kendrick 551 ET consigned by Sage Krebs, Gordon, NE to Rockin H, New Salem, ND, \$13,000.

Lot 35, Kolt Lincoln 19 ET, consigned by Mills Cattle/Kolt Cattle, Gordon, NE to Tim Campbel, Hemingford, NE, \$9,000.

Lot 17, CHEZ Dante 652D ET consigned by Chesney Effling, Highmore, SD, to Logan Espo (or Ipsen), \$7,500.

Top Females:

Lot 5, SM Poppin Good consigned by

Glenn Muller, Davis/Agar, SD to Reed Prickett, Parkston, SD, \$5,500.

Lot 13, K Kaylee 554 consigned by Sage Krebs to David Burger, Winner, SD \$3,500.

Wagner Herefords &
Baxter Angus
Back to Basics Production Sale
March 20, 2017
Rockham, SD
Auctioneer: Chisum Peterson

14 Yearling Hereford Bulls — \$3,429

14 2 Year Old Hereford Bulls — \$3,286

31 Yearling Angus Bulls — \$3,565
10 Yearling Black Hereford Bulls — \$3,225

5 2-Year-Old Black Hereford Bulls — \$3,100

16 Angus Heifers — \$1,863
25 Commercial Bred

Hereford Heifers — \$1,792
11 Black Hereford Heifers — \$1,841
21 Black Baldy Bred Heifers — \$2,310

4 Commercial Angus Heifers — \$4,750

1 Hereford Influence Bull — \$5,000

Top Yearling Hereford Bulls:

Lot 8, WH Crimson 70D ET, 3/21/16 by H/TSR/CHEZ Full Throttle to Botum Brothers, Tulare, SD, \$6,500.

Lot 6, WH MR Lambeau 30D, 2/22/16 by TH 702T 17Y Lambeau 158 to Fawcett's Elm Creek Ranch, Ree Heights, SD, \$5,500.

Lot 3, WH MR Red Bull 01D, 2/1/16 by Churchill Red Bull 200Z to Garrett Masat, Redfield, SD, \$5,000.

Lot 19, WH MR Victor 06D, 2/7/16 by TH 43P 719T Victor 467Y to Schuette Land & Cattle, Highmore, SD, \$4,000.

Top Two-Year-Old Hereford Bulls:

Lot 31, RW MR Revolution C152, 4/10/15 by RV Revolution 0401 to Kyle Krause, Watertown, SD, \$4,250.

Lot 40, RW MR Trust Fund C212, 3/28/15 by BAR JZ Trust Fund 245A, \$4,250.

Lot 35, RW MR Victor C164, 4/14/15 by RV Revolution 0401 to Kleinjan Farms, Bruce, SD, \$4,000.

Top Bred Hereford Heifers:

Lot 55, RW Miss Katie C42, 3/5/15 by TH 702T 17Y Lambeau 158 to Nick Kalinay, Clutier, IA, \$2,600.

Lot 221, SR Rhonda 587C, 4/16/16 by Churchill Sensation 028X to Jake Groft, Northville, SD, \$2,400.

Lot 224, THR MISS Thor 5296C, 5/1/16 by BAR JZ Audacious 294A to Jake Groft, \$2,400.

Lot 231, KH Legend's Addie 342 510, 6/1/16 by LH Legend 242 to Nick Kalinay, \$2,400.

Top Yearling Angus Bulls:

Lot 109, BA Capitalist 6602, 2/14/16 by Connealy Capitalist 08 to Brad DeYoung, Frankfort, SD, \$6,500.

Lot 107, BA Limelight 6193, 2/29/16 by W H S Limelight 64V to Jessen Family Farms, Redfield, SD, \$5,500.

Lot 108, BA Capitalist 6929, 2/12/16 by Connealy Capitalist 08 to Brad DeYoung, \$5,000.

Lot 111, BA War Party 6864, 2/26/16 by Werner War Party 2417 to Levzow Farms, Rockham, SD, \$5,000.

Lot 140, BA Aberdeen 6535, 4/3/16 by D 759 Aberdeen Y14 to Jeff Clement, St. Lawrence, SD, \$4,750.

Lot 135, BA Upward 0120 6964, 4/12/16 by Lagrand Upward 0120 to Marty Anderson, Hitchcock, SD, \$4,500.

Top Yearling Black Hereford Bulls:

Lot 196, BAX Dynasty 6133, 2/6/16 by BCKST Black Dynasty Z4 to Schroeder's Black Herefords, Westphalia, MO, \$5,250.

Lot 209, BAX Balder Y090 643, 2/21/16 by JN Balder Y090 to Rosberg Farms Inc, Wausau, NE, \$3,750.

Lot 200, BAX Dynasty 671 -Y, 2/12/16 by BCKST Black Dynasty Z4 to Harv Rozenboom, Inwood, IA, \$3,500.

Top Two-Year-Old Black Hereford Bulls:

Lot 212, BAX Troubadour 811 5129, 3/26/15 by Troubadour 811 to Kenzy Ranch, Iona, SD, \$4,000.

Lot 211, BAX Troubadour 5922, 3/3/15 by Troubadour 811 to Kenzy Ranch, \$3,250.

Top Angus Heifer:

Lot 157, BA Upward 2972 6504, 3/4/16 by BA Upward 2972 to Troy Beckett, Miller, SD, \$2,500.

Top Black Hereford Heifers:

Lot 182, BAX Balder 9630 6938, 3/21/16 by JN Balder 9630 to Knight N Gail Farms, Mooresville, NC, \$2,700.

Lot 191, BAX Balder Z709 674, 2/25/16 by JN Balder Z709 to Triple T Farms, Nancy, KY, \$2,500.

Top Black Baldy Heifers:

17 head to Mike Jessen, Redfield, SD, \$2,400

Top Hereford Influence Bull:

Lot 217, BAX Troubadour 5133, 2/25/15 by Troubadour 811 to Nathan Robinson, Huron, SD, \$5,000.

Sale Season Slows Down... Impressive Cattle, Tremendous People & A Sale-Time Proposal



Ravine Creek Sale — Jerry and Matt Bischoff of Ravine Creek Ranch, Huron, SD, in the pens before their sale.



WWII Veteran— Curt Eggers, Sioux Falls, SD was in the crowd at the I-29 Bull Run sale where his son and grandson sold cattle (Eggers Southview Farm). Curt is a World War II veteran and served in Germany, Austria and France just to name a few. Thank you for your service to our country, Mr. Eggers!



Excitement at the Ravine Creek Sale as Tucker Parker proposed to Courtney Johnson. She said, "yes!"



I-29 Sale — Graham Broughton from Colorado helping out at the I-29 Bull Sale in Sioux Falls, SD.



XTC Next Generation — Byron and Carolyn Templeton from XTC Ranches in Canada sent us this photo of their grandson, Nash, reading up on all the Hereford America news. Looks like he is checking out the Durbin Creek ad.



Tricky's Herefords — Betty and Dick Wetlaufer, Winfred, SD own Tricky's Herefords.



Herefords and Corgis — Hereford breeder Vickie Guether is also known for her Corgi pups!

Offering Horned & Polled Bulls By **Private Treaty Sales**



Hoffman
HEREFORDS.COM
Leola, South Dakota

Your Source of Maternal & Performance Power!



▲ Remital W FARGO 139C



▲ Remital W BNC AFTER HOURS 37B



Colin & Mary Beth Hoffman
11341 357th Ave. • Leola, SD 57456 • (605) 439-3623 • (605) 216-7506
www.hoffmanherefords.com



▲ HHT 328 Dakota Lad X357

STUBER RANCH'S 49th Annual Sale

SATURDAY, APRIL 15, 2017 • 1:00 pm • At the Ranch

Selling: 100 YEARLING BULLS • 7 FALL BULLS • 10 POLLED YEARLING BULLS • 60 YEARLING REGISTERED HEIFERS • 90 HOME RAISED COMMERCIAL HEIFERS • 35 BWF F1 HEIFERS

Featuring 30 sons and many daughters of our totally proven Bull — SENSATION

With a strong offering from our new sires: BILLY THE KID — 20 sons sell; C STOCKMAN — 18 sons sell; TURNING POINT — 11 sons sell.



LOT 7 SON OF SENSATION — MANY BROTHERS AND SISTERS SELL. GOGGLE EYED THICK AND DEEP.
BW 2.5 WW 51 YW 88 M 30 REA .72 MARB .27



LOT 41 — BILLY THE KID SON — 19 BROTHERS SELL. BIG HIP, LOIN AND CORRECT MADE.
BW 4.2 WW 56 YW 100 M 35 REA .53 MARB .10



LOT 185 — SUPER SENSATION SON FROM A GREAT COW FAMILY. HE IS BOLD, DEEP, THICK, CORRECT, LARGE TESTICLES — GIVES YOU THE LOOK OF A CARCASS BULL.
BW 2.1 WW 55 YW 85 M 35 REA .47 MARB .33



LOT 14 — TOP SON OF TURNING POINT — SIRE GROUP WITH PERFORMANCE AND GROWTH. THIS GUY IS WIDE, LONG AND DEEP.
BW 4.4 WW 70 YW 117 M 33 REA .70 MARB .26



LOT 16 — SUPER THICK, STYLISH SON OF BILLY THE KID. GREAT QUARTER AND LOIN WITH BONE.
BW 4.3 WW 62 YW 107 M 33 REA .67 MARB .00



LOT 183 — RANCHER'S BULL DELUXE — A BILLY. LONG, DEEP SIDED, PIGMENTED AND CORRECT.
BW 4.4 WW 46 YW 91 M 28 REA .58 MARB .10



LOT 28 — SON OF STOCKMAN — SIRE GROUP OF LENGTH, THICK BACKS, WIDE BASED, IDEAL PROFILE AND BONE. DAUGHTERS ARE FEMININE AND MILK.
BW 4.4 WW 59 YW 97 M 36 REA .53 MARB .11



LOT 72 — ELITE SENSATION SON WITH MODERATE FRAME AND BONE. MARKED RIGHT AND CLEAN MADE.
BW 0.3 WW 59 YW 86 M 41 REA .28 MARB .30



LOT 186 — POLLED, A POWERFUL STEP UP SON. TRIM MADE, THICK WITH BALANCE.
BW 4.1 WW 46 YW 85 M 26 REA .56 MARB .21

DVAuction

Auctioneer:
Joe Goggins

PROVEN SIRES: CHURCHILL YANKEE; UPS NAVARRO; CL 1 DOMINO 0130X; HH ADVANCE 0132X;
SR RIGHT ON 2203Z; CL 1 DOMINO 1161Y; SR BAKKEN 62Z; NJW 73S HOMETOWN 10Y; R 2Y CAPTION 43A.

OUR REGISTERED HEIFER OFFERING RUNS DEEP. TOP-END FEMALES FROM EACH SIRE WILL BE REPRESENTED. OUR COMMERCIAL HEIFERS ARE FROM OUR COMMERCIAL COW HERD AND THE BWF ARE F1'S FROM OUR FIRST CALF HEIFERS.

10 miles north of Bowman or 16 miles South of Amidon on Hwy 85, then 5 miles West, 1/2 mile South

STUBER RANCH

7606 149th AVE SW BOX 56 BOWMAN, ND 58623
ROGER 701-523-5371 DUANE 701-523-3496 LAUREEN 701-523-5297
Contact us at ddstuber@ndsupernet.com or visit us at stuberranch.com



Pictures, pedigrees and videos on
www.stuberranch.com

LET US PUT YOU ON OUR MAILING
LIST—VISITORS WELCOME ANYTIME

The Ladies of Stuber Ranch's

49th Annual Sale

SATURDAY, APRIL 15, 2017 • 1:00 pm • At the Ranch



LOT 602 — CAPTION DAUGHTER WITH CLASS AND PIGMENT.
BW 4.2 WW 51 YW 87 M 21 REA .33 MARB .14



LOT 626 — STOCKMAN DAUGHTER. SUPER THICK AND DEEP.
BW 4.9 WW 61 YW 96 M 35 REA .43 MARB .22



LOT 631 — FACTOR DAUGHTER. THEY MAKE GREAT COWS.
BW 3.5 WW 55 YW 90 M 26 REA .05 MARB .25



LOT 642 — EXCELLENT MADE STOCKMAN WITH PROFILE AND CLASS.
BW 3.4 WW 49 YW 75 M 30 REA .38 MARB .19



LOT 654 — POLLED. ONE OF THE BEST. A RIGHT ON. BONE, DEEP, THICK.
BW 3.5 WW 56 YW 77 M 34 REA .52 MARB .21



LOT 671 — RIGHT ON. EYE APPEAL, CORRECT, LOW BW, GOOD SPREAD.
BW 1.8 WW 52 YW 94 M 35 REA .50 MARB .09



LOT 6102 — CLASSY, COMPLETE AND CORRECT NAVARRO DAUGHTER.
BW 4.7 WW 48 YW 86 M 26 REA .35 MARB .25



LOT 6126 — TURNING POINT DAUGHTER. PERFORMANCE, GROWTH WITH LOW BW.
BW 1.0 WW 58 YW 104 M 35 REA .70 MARB .18



LOT 6146 — BILLY THE KID DAUGHTER. THEY ARE FANCY AND MAKE GOOD COWS.
BW 5.0 WW 52 YW 96 M 28 REA .42 MARB .09

DVAuction

Auctioneer:
Joe Goggins

PROVEN SIRES: CHURCHILL YANKEE; UPS NAVARRO; CL 1 DOMINO 0130X; HH ADVANCE 0132X; SR RIGHT ON 2203Z; CL 1 DOMINO 1161Y; SR BAKKEN 62Z; NJW 73S HOMETOWN 10Y; R 2Y CAPTION 43A.

OUR REGISTERED HEIFER OFFERING RUNS DEEP. TOP-END FEMALES FROM EACH SIRE WILL BE REPRESENTED. OUR COMMERCIAL HEIFERS ARE FROM OUR COMMERCIAL COW HERD AND THE BWF ARE F1'S FROM OUR FIRST CALF HEIFERS.



10 miles north of Bowman or 16 miles South of Amidon on Hwy 85, then 5 miles West, 1/2 mile South

STUBER RANCH

7606 149th AVE SW BOX 56 BOWMAN, ND 58623

ROGER 701-523-5371 DUANE 701-523-3496 LAUREEN 701-523-5297

Contact us at ddstuber@ndsupernet.com or visit us at stuberranch.com



Pictures, pedigrees and videos on
www.stuberranch.com

LET US PUT YOU ON OUR MAILING LIST—VISITORS WELCOME ANYTIME

Hereford Sale Scenes in the Upper Midwest



Peg Silverberg, Bar JZ Ranches, Holabird with Brian Simon, Seneca, SD, who bought the top selling bull at their sale.



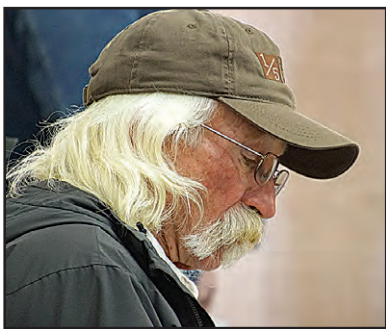
Chris Effling, Tri-State Livestock News with Reese and Elly Jo Wagner before their sale with Baxter Angus near Rockham, SD.



Mark Baxter holds his sale together with Wagners.



Ron Schutte, S&S Polled Herefords in Guide Rock, NE, gave opening comments before their sale. It was a very active sale this year for the Schutte family and their average reflected this. Ron is known for great cattle and his post-sale jokes.



Mark McClintock from Menard, Texas was handling several bids at the Hoffman Sale.



Orville Beyea, retired from Wishbone Herefords, attended the Hoffman sale near Thedford, NE.



Tom Walsh from De Graff, MN sold a few bulls in the Starmak sale, Sioux Falls, SD.



Matt Knock, StarMak, Tea, SD.



Randy Helms, Holbrook, NE at the S&S sale.

Semen For Sale

\$20 per straw
Certificates at cost
Discounts for orders of 20 straws or more.



D13
Polled, dark red with big butt and guts and lots of muscle.
Sired by TH 49U 719T Sheyenne 3X out of a Sensation cow.
Top 1% for CED, BW, CEZ; top 5% for M&G, MCE, and CHB;
top 3% for BMI; top 10% for BII. Our top 2016 polled bull for CED.

TRICKYS SHEYETTE
B06-03X D13
REG. #: 43723683
DOB: 3/8/2016

• POLLED •
SIRE: TH 49U 719T
SHEYENNE 3X
EPDs:
CED 10.6; BW -1.6;
WW 61; YW 86;
M 20; MG 60;
CEM 2.6;
REA .38;
MRB .22; CHB\$ 33



D46
#1 bull in the AHA's database of the entire 2016 calf crop for REA!

(#1 female was also one of ours at 1.43 as of 3/15/17.)

REA EPD 1.32 • GE-EPDs • Horned bull sired by Trust

Red neck, eyes, nuts, and leg. Long with a big rear. Horned.

Top 1% for MCE, REA; top 5% for BMI; top 2% for YW; top 3% for CHB.

Owned with Jon Molstad, Ramona, SD.

TRICKYS TRUST
Z74-100W D46
REG. #: 43724383
DOB: 3/28/2016
• HORNED •
SIRE: NJW 73S M326
TRUST 100W ET

EPDs:
CED 1.7; BW 2.7;
WW 60; YW 109;
M 26; MG 56;
CEM 5.6;
REA 1.32;
MRB -.09; CHB\$ 35

TH 122 711 Victor 719T
TH 49U 719T Sheyenne 3X
TH 235 103R Duchess 49U
Churchill Sensation 028X
Trickys Sensa Z61-028X B6
Trickys COO X21-9036 Z61

DRF JWR Prince Victor 711
KBCR 19D Dominette 122
TH 75J 44M Legacy 103R
TH 53P W39 Duchess 235
UPS Domino 3027
Churchill Lady 7202T ET
PF Cooper 9036
Trickys Girl 1436-958T X21

See videos online

KCF Bennett 3008 M326
NJW 73S M326 Trust 100W ET
NJW P606 72N Daydream 73S

Trickys Napi Bar JZ Napoleon 958T
Trickys Girl 437P 371R U47

RRH Mr Felt 3008
KCF Miss 459 F284
PW Victor Boomer P606
NJW 94J Dew 72N
Bar JZ Kirby 638L
Bar JZ Pandora 577N
Bar JZ Executor 371R
DDC Miss Vic Bond 437P



Tricky's Herefords

44132 234th St.
Winfred, SD 57076

Dick & Betty Wettlaufer
rwettlaufer@triotel.net

(605) 485-2648
C: (605) 270-3465

www.TrickysHerefords.com

To our readers and advertisers...

***Thank You
for a Great 20th
Year!***

(Next Issue is in September!)

Largest Privately Owned Hereford Newspaper in North America

HEREFORD AMERICA

Jill and Marc Hotchkiss • Byron Bayers • Taylor Vroman

605/866-4495

13823 Beaver Creek Place, Reva, SD 57651

Visit us at: www.herefordamerica.com

Sydney Dvorak Receives Carmichael Scholarship



Sydney Dvorak, Lake Andes, SD, was named the recipient of the 2017 James Carmichael Memorial Scholarship. She is a high school senior. The honor was presented during the Black Hills Stock Show in Rapid City, SD. James Carmichael, Meadow, SD, was a lifelong Hereford breeder & cattleman. A quiet man and very devoted to his family and friends, he had a great appreciation of all livestock, but especially his Hereford cattle. He very much appreciated the quiet, peaceful range country they lived in. James Carmichael passed away in September 2007.

The Carmichael Family has dedicated this scholarship fund to James Carmichael's memory. His widow and children wish to honor his name and memory by giving young people that have a love for Hereford cattle and agriculture an opportunity to further their education in the hope of providing strong leadership for the agricultural world in the future.

Applicants were eligible from South Dakota, North Dakota, Montana, Wyoming and Nebraska. The family wishes to thank all of the applicants for their efforts and extends its congratulations to Sydney.

74 Head Entered in National Jr. Hereford Fed Steer Shootout



KANSAS CITY, MO – Seventy-four head of cattle from National Junior Hereford Association (NJHA) members in nine states are on feed for the NJHA Fed Steer Shootout competition at Gregory Feedlots Inc., in Tabor, IA.

The program is an opportunity for NJHA members to gain invaluable cattle-feeding industry education and experience. Participants will have the ability to estimate feedyard performance and carcass merit, and then compare the information to actual performance data. They will also measure and compare the profitability of their

animals during the contest.

"Today we processed and performed ultrasounds on the cattle," David Trowbridge, Gregory Feedlots, Inc. manager said. "We will process that information when we get it back from the lab and present that information to the participants. This is a very interesting program. We've got a wide variety of genetics and types of calves here on feed."

Winners of the shootout will be announced at the 2017 AHA Annual Membership Meeting Honoree Reception hosted in Kansas City, MO.

Norsten Joins CHB as Regional Brand Manager

KANSAS CITY, Mo. –Tim Norsten, St. Paul, MN, joined the Certified Hereford Beef (CHB) staff March 6 as the Midwest Regional Brand Manager.

Norsten will work with clients in the Midwest region to expand the availability of CHB products and promote the CHB brand.

Norsten joins the team with extensive retail and foodservice experience. He has worked in restaurant management in top U.S. cities including Chicago and New York City and has spent 20 years at Sysco Foods of Minnesota as a sales and marketing associate, key accounts manager, Sysco brands manager, COP specialist with Hereford beef and a business review chef. He also served as a business development manager with Coca-Cola.

"We are excited to welcome Tim to the CHB team," said Amari Manning, CHB chief operating officer. "His industry experience will be a tremendous

asset and we look forward to the difference he will make with the CHB brand."

Norsten's territory will include North Dakota, South Dakota, Nebraska, Minnesota, Wisconsin, Iowa, Illinois and Michigan.



Tim Norsten

Bedwell Teaches Course at NCBA Cattlemen's Convention

KANSAS CITY, MO – Shane Bedwell, AHA director of breed improvement and chief operating officer, taught the course "Reducing lameness and improving cattle structure through genetics and management" Feb. 1 at the 24th edition of the Cattlemen's College during the 2017 National Cattlemen's Beef Association Cattle Industry Convention in Nashville.

Bedwell's course was one of 15 educational sessions taught to more than 1,000

cattlemen and women in attendance at the event.

"I'm very humbled I was asked to speak at the Cattlemen's College," Bedwell said. "Continued education is a vital part of advancing the beef industry, and I'm thankful to play a small role in the future of our industry."

Presentations from the 2017 Cattlemen's College are available online at beefusa.org.

August 10th & 11th Southwest Saskatchewan HEREFORD TOUR 2017

August 10th **Hills Galore Stock Farm** Alvin & Mary-Kate Pawlitza
P: (306) 689-2597 Hazlet - hillsgalore@xplornet.com

Phantom Creek Livestock Ltd. Doug & Wanda Mann
P: (306) 773-7136 Swift Current - w_mann@explornet.ca

August 11th **Gillespie Hereford Ranch**
Donnie & Laurel Gillespie Donald Sr Gillespie
P: (306) 774-3636 P: (306) 773-0073
Wymark - donniewaynegillespie@gmail.com

Braun Ranch
Craig & Carrie Braun Dick & Lorraine Braun
P: (306) 297-2132 P: (306) 297-6404
Simmie - braunranchltd@gmail.com

XTC Ranches
Byron & Carolyn Templeton Travis & Jocelyn Wasko
P: (306) 295-3357 P: (306) 295-4000
Eastend - xtranches@gmail.com

Additional SW Saskatchewan Breeders will have cattle on display at each stop

Please call any Tour Stop to RSVP

Tour Hotel - Home Inn & Suites, Swift Current SK

Rates: Double \$114 (+tax) Double with Kitchen \$134 (+tax) King \$124 (+tax)
P: (306) 778-7788 Ask for the Southwest Hereford Tour Block



NEW!

Now offering
online sales & bidding.

TheLivestockLink.com

Check Out the following
Static Online Sale for the
month of April:

April 20-22 - Ehke Herefords

Booking now for summer,
fall and 2018 sales.
Give us a call!

THE BEST IN LIVESTOCK VIDEOS & VIDEO SALES

The Livestock Link™

Call Marc to set up
your next sale:
605/490-1513

Using the biggest high-definition TV screens in the business.

Livestock Videoing, Video Sales, Online Sales and Sale Clerking Services



Cattle and Horses plus other livestock and real estate

VIDEO SALES

- ▶ Using the biggest high-definition TV screens in the business.
- ▶ Full service or video only
- ▶ Options available.

CLERKING

- ▶ Full clerking services with detailed reports including sale summary, sire reports, insurance reports, load out and more.

LIVE INTERNET SALES & BIDDING

- ▶ Live internet sales with full feature bidding.
- For more information or assistance please contact Aaron Friedt at 701/590-9597 or E-mail: aaron@TheLivestockLink.com.



Inquire about the total package ... videoing, video sale, online and clerking.

The Livestock Link™
THE BEST IN LIVESTOCK VIDEOS & VIDEO SALES

13823 Beaver Creek Place, Reva, SD 57651

www.thelivestocklink.com

Contact us if you have questions.

Marc Hotchkiss - 605/490-1513 • 605/210-1956
marc@TheLivestockLink.com

Phil Eggers - 605/351-5438
phil@TheLivestockLink.com

Byron's Editorial...

(continued from page 1)

are therefore receiving sales at a much lesser amount than they have had in the past few years. The buyers this year are probably as picky as I have seen the last few years, in that they want to buy the quality of bulls they want, at their price, or they tend to move on to some other offering.

As I talk to both commercial and purebred breeders I am constantly amazed at how little the average cattlemen and cattlemen know about EPDs, when they try to compare not only cattle in the Hereford breed, but when they try to compare Hereford cattle to Angus or other breeds. I think we as an industry have done a terrible job in educating our cattle people in the industry about EPDs. I will admit that there are a certain group of people that are well educated, or self-educated, as to how the process works. But I am very disheartened when I read the Angus ads and how they show the superiority over other breeds, but mostly Herefords, where it looks like we are really slammed in the face. I have been to several cattlemen's groups in the last few years where some questions were asked to the people attending about ba-

sic EPD numbers. In most cases, they were not able to either give an answer, or a reasonable answer. I have asked many purebred breeders in the last several years, what does your commercial buyer usually ask you about performance when he is looking at your bulls? Ninety-five percent of breeders say they ask about the actual birth weight, not the adjusted birth weight, but the actual birth weight, when the calf was born, and that is usually the end of the questions. It was very interesting to me to have an experience about three years ago, that totally shocked me. I was asked to sit on a hiring panel for a man who had just recently purchased a herd of purebred cattle and had set up a ranching operation in Idaho, where he was in the process of hiring a ranch and cattle manager, to run the operation, as he was an absentee cattle owner working overseas. Part of the criteria for this manager was that he or she was to be a college graduate. Because I was very interested in the interviewees knowledge of the purebred cattle industry I wanted to be sure that they had a grasp of EPDs. The first interviewee, a young lady, answered the questions on EPDs quite well, concerning the Angus Industry, but had no idea about the difference between Hereford and Angus EPDs when they were being

compared, and she had no idea about the breed standards or the averages for the Hereford breed. The second person interviewed was from a different university in a different state, had great work experience on the college farm, but basically with feeder cattle and cow calving with other than Hereford breed, and this recent college graduate had heard about EPD's but admitted that he knew nothing about them. The third person interviewed, who came from a third college, and was there basically because he received a scholarship to play on the football team, he was a ranch boy from an operation that raised Hereford cattle. He grew up under his grandfather's tutelage, where performance was based on if the mother cow had a calf, did she raise a big calf and was the big calf good enough to be sold as a breeding bull, the females remained in the herd on much the same basis, this was the system that was used by his grandfather.

Even though this young man knew cattle well, he did not know a single thing about EPDs, other than he had known that they existed. Here we had three college graduates, all good general candidates, all had some cattle experience, and yet, each of them totally flunked the course on my questions about EPDs. I am just a very educated breeder who has followed EPDs since their inception, I do not know anywhere near what the educated doctors who are involved with our breed know about our EPD programs. We have several breeders in the industry, that I have talked to, who have some exceptional EPDs in their cattle, but practically all who I talk to are telling me that the commercial bull buyers are not very current, if they are current at all, on the good characteristics that they offer. On the other hand, the bulls in the Hereford industry with great numbers are being highly used by the purebred breeders. But in most cases, that I have closely observed, when you get to the commercial bull buyers they have a different set of standards by which they evaluate and buy bulls. I think the individuals in charge of the Hereford breed need to establish a training standard of some kind to try to help more fully educate the people in the commercial industry about how to more carefully evaluate, and compare not only the Hereford cattle, but also if you have an Angus cow herd and want a Hereford bull to go on them, how you start to compare the evaluations of those two breeds. I can perhaps hear a lot of you say "Hogwash, I know plenty about EPDs and what I want", but are you a mainstream purebred Hereford breeder who generates most of your cattle income from purebred heifers or herd bull prospects, or are you possibly one of the younger breeders who have graduated from a top agricultural college that tries to make a better effort to teach Hereford pedigrees?

I have found that all of the top schools do teach EPDs, but it's mostly Angus EPDs. I have a friend who has done a great amount of work on genetics in the livestock industry in the last 20 years and he has told me that many attempts have been made to create an EPD system for all breeds of cattle that would make a proper comparison, but even though there have been attempts by certain breeds and certain individuals through the years, we still don't have a system that is readily acceptable to the cattle industry. However, with this said we still need more education about analyzing not only the Hereford breed EPDs, but all breeds that breeders are considering using as cross breeds.

Many of you who receive Hereford America, probably read about the terrible ordeal the Oschner family from Wyoming went through with their devastating fire this last year. If you haven't read the article I would suggest that you go back and read it because it is terrifying to think about what this family has gone through. In this week in the Cattle Business Weekly there was another story about the Gardiner family in Kansas, they have been a prominent Angus family for many years and operate on a 48,000-acre ranch. The Gardiner's estimate they have lost 500 head of cattle from the massive fire in their area. As Greg Gardiner said, "the devastating losses not only included the cattle, but also all of the fences that were destroyed by the fire." In 48,000 acres that is a huge amount of fencing. Like Greg Gardiner explained, we still can't believe that we didn't get anyone hurt or killed in the fire, the same thing was said about the Oschner family. But as both families said through all the turmoil and devastation nobody was killed, which is unbelievable. In the last years, Mother Nature has shown her power in the cattle country of the West, it has just been a few years now that winter took its toll in North and South Dakota and Eastern Montana and in the last year or two devastating fires have hit through California, Texas, Kansas and other areas of the south land. I can remember back some 40 years when we lost 17 cows and their calves in an extreme spring snow storm and blizzard. At that time, I thought it was terrible and the financial result from it was a serious. But the things that we have seen people go through in the last few years with both blizzards and fire are unbelievably bad. We hope these people affected by this last series of fires recover and are able to carry on.

This is our last issue until Fall and we hope that all of you readers have a good summer and that all your Herefords do well. We will be back with you next Fall with *Hereford America* and other stories that tell "the rest of the story."

— BB

Leddy
HEREFORD & RED ANGUS

COMPLETE DISPERSION

— Hereford & Red Angus —

SEPTEMBER 30, 2017

at the farm • Twin Brooks, SD

SELLING

70 HEAD OF HEREFORD BRED FEMALES

plus the entire 2017 calf crop of bulls and heifers

100 RED ANGUS BRED FEMALES

plus the entire 2017 calf crop of bulls and heifers

A high percentage of these females are A.I. bred and many of the cows are the result of A.I. breeding.

Ages: Bred Heifers to 10 years old — Nothing held back!

You're invited this summer to look at the cattle.

Livestock Marketing • Video Sales • Bid By Click Online Sales
Livestock Link

Leddy
HEREFORD & RED ANGUS

Since 1937

Wade, Lori, Rebecca, Allison
C: (605) 949-0630

15293 473rd Ave.,
Twin Brooks, SD 57269
email: wledddy@tnics.com

Gene
H: (605) 432-5182
C: (605) 530-1659

ART HANDEL, Consultant • 605/391-8233

AUCTIONEERS

BALOG
Auction Services, Inc.

Box 786
Lethbridge, Alberta T1J 3Z6
Canada
(403) 320-1980
1-877-320-1988
Fax: (403) 320-2660
www.balogauction.com

**DALE STITH**
Auctioneer

5239 Old Sardis Pike
Mays Lick, KY 41055

cell 918-760-1550
dalestith@yahoo.com

**Lynn Weishaar**
Livestock Auctioneer

13567 SD Highway 79
Reva, SD 57651

605/866-4670**Seth Weishaar**

Livestock Auctioneer

Bringing purebred & commercial cattlemen together.

♦ Purebred

♦ Commercial

11639 Snoma Rd.
Belle Fourche, SD
57717
(605) 210-1124
(605) 892-2640



ARKANSAS

Moon Herefords
www.moonherefords.com

Canadian and Carpenter-Williams Genetics

A total Performance Program
producing practical/efficient
Horned Herefords for a practical world.

Harrison, Arkansas
pamoon@windstream.net
870-743-5003 (O)
870-715-7244 (C)



AUCTION BARN

LEMMON LIVESTOCK, INC.
Box 477
Lemmon, South Dakota 57638

Phone 605-374-3877
or 1-800-822-8853

Paul Huffman, General Manager • 605-645-2493
Chad Hetzel, Assistant Manager • 701-376-3748

• Sales Every Wednesday •

We feature
Hereford & Hereford-X Cattle in Special Sales
www.lemmonlivestock.com

CALIFORNIA

PEDRETTI DOMINOS
Line 1

1975 E. Roosevelt Rd.
El Nido, CA 95317

Gino & Mona Pedretti (209) 756-1609
Mark St. Pierre (209) 233-1406
Gino Pedretti Jr. (209) 756-2088

Schohr
Herefords

P.O. Box 391 • Gridley, CA 95948

Carl & Susan: 530-846-4354
Steven & Joseph: 530-864-2855
E-mail: ricencows@schohr.com



Selling bulls and heifers
by private treaty.
Contact us for semen.

CANADA

BAR PIPE
Hereford Ranch

Generation after generation, same trusted brand.

Jay Cross: (403) 978-2767
Doug Finseth, Mgr.: (403) 938-7726
Okotoks, AB
www.barpipes.com



Brad & Veronica
Doenz
(403) 642-3894

E-mail: doenzb@gmail.ca
www.doenzranches.net

PO Box 362, Warner, AB T0K 2L0
3.2 km E of Warner on #504 & 3.2 km N on Rg Rd #170
Sale: Nov. 16, 2017 @ 1 p.m. at the Ranch

**Hills Galore**
Stock Farms

ABBEY, SASKATCHEWAN

Alvin and Mary-Kate
Pawlitza
Julia, Alex
and Georgia

Tel | 306/689-2597

Email | mk@hillsgalore.com

Web | www.hillsgalore.com

Mailing Address | Box 179, Hazlet, SK S0N 1E0

Lilybrook Herefords, Inc.

Practical, Efficient Cattle Are Our Livelihood!

Andy Schuepbach
Box 2044
Claresholm, AB, Canada
T0L 0T0



Phone: 403/625-4693 • Cell: 403/625-6316
Fax: 403/625-1500

andy@lilybrookherefords.com
www.lilybrookherefords.com



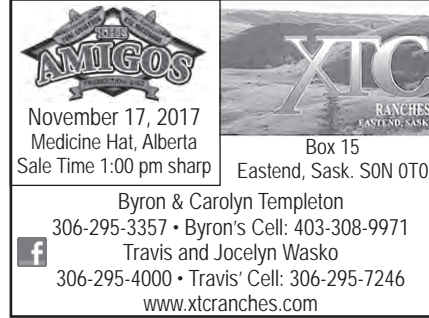
43342 Millar Ave
Saskatoon, SK S7K 7G9
Ph: 306-933-4200
Fax: 306-934-0744
info@tbarc.com
www.buyagro.com

CHRIS POLEY: 306-220-5006
TED SERHIENKO: 306-221-2711
SHANE MICHELSON: 403-363-9973
BEN WRIGHT: 519-374-3335

**ULRICH**
HEREFORD RANCH INC.
"Performance Tested Herefords"

Hans Ulrich Peter Ulrich
(403) 625-2237 Cell (403) 625-1036

Email: peter@ulrichherefords.com
Website: www.ulrichherefords.com
Box 843, Claresholm, AB T0L 0T0
From Claresholm, 8 mi. (12.8 km) E, 4 mi. (6.4 km) N, 1/4 mi. E.



November 17, 2017
Medicine Hat, Alberta
Sale Time 1:00 pm sharp

Box 15
Eastend, Sask. S0N 0T0

Byron & Carolyn Templeton
306-295-3357 • Byron's Cell: 403-308-9971
Travis and Jocelyn Wasko
306-295-4000 • Travis' Cell: 306-295-7246
www.xtcranches.com

COLORADO

Ernst Herefords

Marshall Ernst Family
Windsor, CO 80550
970-381-6316
www.ernstherefords.com

Bull Sale • March 2018 • 1 p.m.
at Shamrock Livestock • O'Neill, NE



High Altitude
PAP Tested
Since 1980 at 8,000 ft. +

MIKE FUCHS
HEREFORDS
3673 Co. Rd. 14
Del Norte, CO 81132
Mike 719/657-2519

• Annual Sale Dec. 2, 2017 •
mikefuchsherefords@gmail.com



E-mail: jbh@herefordamerica.com
or phone 605/866-4495

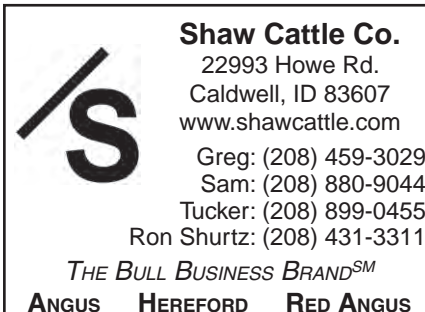


38th
ANNUAL SALE

Tuesday,
Oct. 17, 2017
800-351-5362

970-878-5362 • 970-270-4445 cell
Mary Strang & Family
2969 County Road 8 • Meeker, CO 81641
strangherefords@gmail.com
www.strangherefords.com

IDAHO



Shaw Cattle Co.
22993 Howe Rd.
Caldwell, ID 83607
www.shawcattle.com

Greg: (208) 459-3029
Sam: (208) 880-9044
Tucker: (208) 899-0455
Ron Shurtz: (208) 431-3311

THE BULL BUSINESS BRANDSM

ANGUS HEREFORD RED ANGUS



WOODEN SHOE FARMS
Neal Ward
673 N. 825 W. • Blackfoot, ID 83221
(208) 684-5252

HERD SIRES:

Remital Online 122L • TDP Eldorado
WSF Home Schooled • Mr. Hereford

**Johnson**
Herefords

Since 1918

Registered Horned & Polled Herefords

Jack & Lynne Johnson
2165 240th St.
Milford, IA 51351

Jack: 712-260-3650 • Lynn: 712-330-7470

IOWA

Good Doin' Genetics

WIESE & SONS

Bulls, Females, Semen

Now in our 100th year of producing top Herefords

P.O. Box 305
Manning, IA 51455
712-653-3678

www.wieseandsons.com

Hereford America



Hurry!
Don't be late!

Next paper is the September issue. Deadline is August 5. Have a good summer!

Call 605/866-4495 or e-mail jbh@herefordamerica.com

ILLINOIS



Baker Farms
1278 E. 20th Rd. • Streator, IL 61364
Fred • Debby
Sarah • Susan • John
Phone: (815) 672-3491 • Mobile: (815) 257-3491
Fax: (815) 672-1984

Superior Hereford Genetics

LOEHR HEREFORD FARM
P.T. "Pete" Loehr
113 W. Northgate Rd
Peoria, Ill. 61614
309/692-6026 or 1-800-937-BEEF

- The Best of the Best -
Line One, Canadian & Pure Gold

QUALITY & PERFORMANCE SINCE 1919



Milligan Herefords
481 Church Rd
Kings, IL 61068

JAMES (815) 562-4946 ROBERT (815) 562-6391 MALCOLM (815) 562-5879
(815) 761-1523

STEPHENS HEREFORD FARM
STEPHENS TRAILER SALES
Eby aluminum livestock

P.O. Box 168 • Taylorville, IL 62568
Mark Stephens
217-825-7913 Cell
mark_stephens46@yahoo.com
Danny Stephens, Trailers • 217-824-2815

LIVESTOCK EQUIPMENT



PORTABLE & STATIONARY LIVESTOCK EQUIPMENT

FAWCETT ENTERPRISES, INC.
36111 211th Street ~ Miller, SD 57362-6814

For More Information Contact:
RANDY FAWCETT
Phone 605/853-3930 • Cell 605/461-9346 • Fax 605/853-3310

CUSTOM DESIGNS AVAILABLE

.....
www.herefordamerica.com

Hereford America
North America's Largest Privately Owned
Hereford Newspaper.

Call 605/866-4495 for more information.
or E-mail: jbh@herefordamerica.com

.....
www.herefordamerica.com


KANSAS



Alexander Farms
Polled Herefords
LINEBRED KING DOMINOS

John Alexander Family
2756 S. Donmyer Road
Gypsum, KS 67448-9414
Home: (785) 536-4931
alex farms@eaglecom.net
facebook.com/alex farmsbeef

— Breeding Stock, Semen & Flushes For Sale —



and
BERAN BROS.
ANGUS


HEREFORDS 1350 NE 100 Ave.
Claflin, KS 67525

Craig Beran, Jr. Gerald Beran, Jr.
620/587-3709 620/587-3407
620/786-9703 (cell) 620/786-9569 (cell)

Sale March 19, 2018
CATTLE FOR SALE AT THE RANCH

BTS HEREFORDS

Bruce & Tracy Schlickau
14601 South McNew Road
Hutchinson, KS 67501
Phone: 620-459-6576



Location: 5 miles south of Hwy 96 & 14 jct.
1 mile east, then 3/4 mile south

Quality Herefords by private treaty sales



Registered
Herefords
SINCE 1965

DAVIS HEREFORDS
Dean & Danny

(785) 256-4643 • (785) 256-4010

29111 Keene Eskridge Rd.
Maple Hill, KS 66507
13 miles west of Topeka on I-70.
3 miles south on Exit 342.

Deewall Family

Mike Herefords
1074 Hwy. 1
620-635-6511
Mike & Jane
Deewall




Coldwater, KS 67029
620-635-5978 (cell)

www.deewallherefords.com

4V RANCH DOUTHIT HEREFORDS

4V Ranch 600 S Lorraine St
St. Francis, KS 67756



MARGO DOUTHIT
(785) 332-2323
Cell 332-4240
4vranch1@gmail.com
4vranchdouthitherefords.com

Bulls & Heifers For Sale

Douthit Herefords
Walter, Megan & Chuck

Douthit-Downey Land & Cattle, LLC
Megan's cell (785) 332-8575
Chuck's cell (785) 332-4034

1805 RS 115
St. Francis, KS 67756
www.douthitherefords.com
megan@douthitherefords.com

FLORY POLLED HEREFORDS

Mike Flory & Family
618 E. 800 Rd.
Lawrence, KS 66047
785/865-3444 • 785/979-3984
mike.flory@sbcglobal.net
JB Trojan & Polled LI

Performance tested since 1979.
Functional cattle with multi-trait performance.



FOR ALL YOUR NEEDS IN HEREFORD CATTLE
IN KANSAS AND SURROUNDING STATES

THE KANSAS HEREFORD ASSOCIATION
Tom Granzow, Secretary-Manager
765 South 3000 Road
Herington, Kansas 67449
785-466-2247 785-466-2226 (FAX)
kansashereford@tctelco.net
www.kansashereford.org

Gustafson Herefords
Gus, Deb and Shelbi Gustafson



7477 Davis Creek Road
Junction City, KS 66441
785-238-7306
I-70 exit 303... 7 miles South

Visitors Always Welcome

Granzow Herefords
Tom, Mary & Tobyn Granzow
765 South 3000 Road
Herington, KS 67449
785/466-2247 or 785/466-6438
www.granzowherefords.com



MEMBER OF THE PTP ALLIANCE

FRANK HUG & SONS

Bulls & Females
For Sale Private Treaty


H 2556 W. 125th Street H
Scranton, KS 66537

Bob Hug 785/230-0434 Ed Hug 785/230-7597
fhug-sons@excite.com

JENSEN BROS.
Jensen Livestock Agency
Kevin & Sheila Jensen
P.O. Box 197 • Courtland, KS 66939
785-374-4372
Kevin: 785-243-6397
jensenks@courtland.net
www.jensenbros.net

Internet Heifer Sale: Oct. 13, 2016
Annual Bull Sale: March 2, 2017
See us for your next herd sire!

MALONE Hereford Farm



1371 Road F
Emporia, KS 66801
Phone: 620-342-7538
Alton's Cell: 620-794-2358
ammalone@lcwb.coop

Alton, Marie, Brian, Dustin and Michelle Malone



1237 N. 13th Rd
Lucas, KS 67648

Gene: 785/658-5612
heartlandhay@wilsoncom.us
Darris: 785/658-5208
Clint: 785/658-7028
www.meitlercattle.com

MILL CREEK RANCH

20635 Hessdale Rd
Alma, KS 66401
David Breiner (785) 449-2841
David cell (785) 456-4790
Chad Breiner (785) 564-2091
Ryan Breiner (785) 207-3070

www.millcreekranch.com
millcreekranch@embarqmail.com

Production Sale Last Tuesday in February
MANHATTAN, KS

"Best of Both Worlds Sale" • 4th Mon. in March
12 noon at the ranch • Dwight, KS



Also selling
70 F-1 Black
Baldy heifers
with calves,
75 Fall bred
heifers
20 Quarter
Horses

70 Hereford
Bulls
60 Angus
Bulls

Jan: 785-482-3383 • Arden: 785-466-1422
Box 8, Dwight, KS 66849
E-mail: jakoleenbros@tctelco.net
www.oleenbrothers.com



Sandhill Farms

Registered Polled Herefords
Kevin, Vera & Tyler Schultz
2408 280th Ave., Haviland, KS 67059
Phone: (620) 995-4072 • Cell: (620) 546-4570
Tyler Cell: (620) 546-1574
e-mail: kevin@sandhillfarms.com
website: www.sandhillfarms.com
Sale March 30, 2018

Schlickau Herefords
Since 1913

Cattle for Sale Private Treaty

Lois
H: 620/465-7749
14506 S. Victory Rd.
Haven, KS 67543
james.schlickau@renogov.org schlickauhfd@embarqmail.com

James and Charlene
H: 620/465-2691
Cell: 316/734-3700
james.schlickau@renogov.org

SMITH CATTLE



Reg./Com. Polled Herefords
Redfield, Kansas

Farm: 620/756-4138 • Cell: 620/365-1737

MINNESOTA

BELL'S RAWHIDE RANCH
Horned & Polled Herefords
F1 Baldy Heifers
Quality Cattle & Horses
6006 76th St. SW
Motley, MN 56466
Roy & Tammy Bell
(218) 397-2579
cell (218) 296-1960
2.5 miles East of Leader

CARLSON FARMS
CF
1470 10th St. N.E.
Murdock, MN 56271
rbmrc1@gmail.com
Ross, Beth, Mallory, Regan 320-366-3726
Rob, Jean, Brett, Bailey, Brook 320-366-3970

Dakitch Hereford Farms
David, Lorie, Michael & Mason Kitchell
Matthew & Darci Kitchell
3471 State Highway 200
Ada, MN 56510-9260
Quality, Performance Cattle For Sale
www.dakitchfarms.com 701-799-7690
dakitch@arvig.net Visitors Always Welcome

Delaney Herefords
Jerry & Shelly Delaney
2071 Co. Rd. 101
Lake Benton, MN 56149
Home: 507/368-9284 • Cell: 507/820-0661
jdh@delaneyherefords.com
www.delaneyherefords.com
Cattle for sale at all times.

DOSE FAMILY HEREFORDS
Building a family tradition on maternal cow power
Allan & Joleen Dose Family
Arlington, MN 55307 C: 320-583-8002
allandose@frontiernet.net
www.dosefamilyherefords.com

JIM, JERI, JODY, JAIME HANSON HEREFORDS
37590 110th St
Comfrey, MN 56019
507.877.3631
jerihanson@hotmail.com
Jim's Cell 507.829.6756 • Jeri's Cell 507.828.2211
Jody's Cell 507.276.8577 • Jaime's Cell 507.276.8237

JMF Herefords and Sim-Angus
ANNUAL BULL SALE,
FIRST SATURDAY IN FEBRUARY
Jared, Makayla, Jaelyn, Tayton and Ty Flower
Holloway, MN
Jared: 320-413-0483 www.jmfherefords.com
Makayla: 605-690-6050 jmflower.11@hotmail.com

September is the next issue of Hereford America
Hereford America
605/866-4495
www.herefordamerica.com
jhb@herefordamerica.com

Jones Farms
Dave & Susan Jones
31490 E. State Hwy. 112
LeSueur, MN 56058
(507) 665-3962
(507) 317-5996 cell
Breeding Stock For Sale
Bulls, Heifers, Club Calves,
F1 Baldy Heifers

KLAGES HEREFORDS
Quality seedstock for sale
Jeff & Mary Klages
64090 410th St
Ortonville, MN 56278
ph/fax (320) 273-2163
jmkklages@fedtelnet.net

Kroening Black Herefords
DNA Profiled - Performance
Registered Black Herefords
Richard and Julie: 218-435-1223
Mike & Bridget: 218-230-1173
Fosston, MN
juliek@gvtel.com

Krogstad Polled Herefords
Les Krogstad 3348 430th St. Fertile, MN 56540 (218) 945-6213 (218) 289-5685 (cell)
Darin Krogstad 16765 Welch Shortcut Welch, MN 55089 (651) 485-0159
les@krogstadpolledherefords.com
www.krogstadpolledherefords.com

Lawrence Herefords
Since 1957
2477 N.W. Main St. • Coon Rapids, MN 55448
Cattle at Princeton, MN
Bulls & Females For Sale
Doug & JoAnn (763) 755-4930
Bryan & Marytina (763) 389-0625
Bradley & Brigitte (612) 720-1311
E-mail: joannlawrence8@msn.com

Lind Polled Herefords
Since 1958
• Dan • Erika • Susie • Judy •
Contact: Dan Lind
200 E. Grove St.
Rushford, MN 55971
(507) 864-2298
cell: (507) 458-2080
e-mail: Lind2@acegroup.cc
Visitors Always Welcome

The Livestock Link For All Your Livestock Video Needs
Call Marc Hotchkiss
605/490-1513

Lost Meadows Farm
Registered Polled Herefords
Shawn & Dawn 36860 Rethwisch Lane Frazee, MN 56544 218.334.4045
Dave & Rhonda Eckert 18513 405th Ave Frazee, MN 56544 218.334.5732

Polled Herefords • Sales
McIver's Happy Acres
David, Maryln, Scott and Tom McIver
15624 340th Ave. Phone: 320-283-5776
Farwell, MN 56327 Fax: 320-283-6044
mcivers@runestone.net
www.mcivershappyacres.net

Nelson Polled Herefords
Phil • 507-629-3375 1616 Co. Rd. 11 Tracy, MN 56175
Will • 507-626-0239
E-mail: wnelson@westtechwb.com
Herd Bulls
NPH Active in EF Beef P230 Frank B497
T.P.R. EFBeef U248 Fellis A246
GENESEEK NPH Tender 10 Domino 428
NPH Tender 6 Domino 407
Proud to be a Hereford Breeder

Minnesota Hereford Breeders
Secretary/Treasurer
Kory and Michele Kruse
2075 51st St.
Ellsworth, MN 56129
507-920-5474
kmkruse96@gmail.com
minnesotaherefordbreeders.com

"Quality" not "Quantity" Hereford Cattle
Schmidt Herefords
Pipestone, MN 56164
John A. Schmidt 787 70th Ave. (507) 825-2383 cell: (507) 215-1037
John E. Schmidt 905 7th St SW (507) 825-2786 cell: (507) 215-1174

Enjoy the summer!
Hereford America
605/866-4495
www.herefordamerica.com
jhb@herefordamerica.com

SPRINGWATER SPH Polled Herefords
Chad, Lacey, Easton & Michoan Williamson Pipestone, MN 507/825-5766 507/215-0817 springwater@svtv.com
Troy Williamson Garretson, SD 507/597-6221 605/254-7875 twilliamson@alliance.com.net

SCHAFFER HEREFORDS
Lester & John Schaffer
FOR SALE:
Bulls
Females
Semen
64664 170th St. Buffalo Lake, MN 55314 (320) 833-2050
(320) 582-1458 John cell
(320) 582-0489 Les

Minnesota Card Ad Space for sale.
Only \$150 per year
contact Jill at
jhb@herefordamerica.com

Inquire about the total package ... videoing, video sale, online bidding and clerking.

The Livestock Link
THE BEST IN LIVESTOCK VIDEO PRESENTATION

Contact us if you have questions.

Marc Hotchkiss - 605/490-1513 cell • 605/210-1956 cell

marc.hotchkiss@gmail.com

13823 Beaver Creek Place, Reva, SD 57651

www.thelivestocklink.com

MONTANA



Byron Bayers
248 Bayers Lane
Twin Bridges, MT 59754
(406) 684-5465
bayers@3rivers.net



Private Treaty Sales
www.beeryherefords.com
Eastern Montana's finest Herefords
~ Horned & Polled ~ Matt & Krista
Joanne 406/773-5721
406/773-5710 cell 406/979-5720
Also selling Red Angus bulls & females

ADS FOR
the September issue
of
Hereford America
must be in by
August 5.

DALLAS POLLED HEREFORDS

Don Dallas
Box 532
Canyon Creek MT 59633
406/368-2244 Ranch
406/443-5110 Office
"Mountain Raised Performance Cattle"

DUTTON HEREFORDS



190 Sunnyside Ln.
Gold Creek, MT 59733
Dean (406) 288-3330
Cell (406) 240-8014

*Registered bulls and commercial
bred heifers for sale.*

EGGEN'S J BAR E RANCH

Since 1898
Arvid & Linda (406) 895-2657
(406) 765-7068 cell (406) 765-8219
Jay-De (406) 671-7149
Lorrie
Box 292 • Plentywood, MT 59254



Mark, Della, Lacey & Jane'a Ehlke
PO Box 178 • Townsend, MT 59644
Mark: 406/439-4311 • Della: 406/439-4300
www.ehlkeherefords.com

FEDDES Herefords

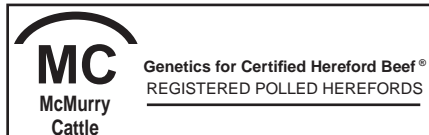
www.feddes.com
TFeddes@msn.com
Dan (406) 284-6810 • cell 570-1602
Tim (406) 284-6990 • cell 570-4771
Marvin
2009 Churchill Road
Manhattan, MT 59741-8122

Hereford America

*North America's Largest Privately
Owned Hereford newspaper*

Hereford news from around the
region. The publication that is read
from cover to cover.

www.HerefordAmerica.com
jbh@herefordamerica.com



Genetics for Certified Hereford Beef®
REGISTERED POLLED HEREFORDS
Fred, Doreen and Rebecca McMurphy
2027 Iris Lane Ranch 20 miles
Billings, MT 59102 east of Billings on
(406) 254-1247 Squaw Creek Road
(406) 697-4040 (cell) www.mcmurphyherefords.com
(406) 254-1247 (fax) mcmurphyherefords@gmail.com



4551 State Rt. 514
Glenmont, OH 44628
Conard & Nancy Stitzlein (330) 378-3421
Matt Stitzlein (330) 378-3487



MOHICAN WEST
3100 Sportsman Park Road
Laurel, MT 59044
Phone/Fax (406) 633-2600
Terry Powlesland (406) 633-2810



REAL WORLD - HONEST - GUARANTEED BULLS

Ace & Tara Diemert
230 3700 Rd South
Lothair, MT 59461
406/432-3412
ngrhereford@northerntel.net

BREEDING HEREFORD
CATTLE SINCE 1945



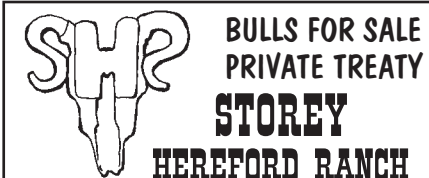
Steer In Trailer Sales



New & Used
Stock & Horse Trailers
Flatbeds - Mats -
Cargo Trailers

Located at I-90 and Hwy. 287

29 Bronco Drive (406) 285-4300
Three Forks, MT 59752 Fax: (406) 285-4146
www.steerin.com 1-877-335-5372



BULLS FOR SALE
PRIVATE TREATY
10069 River Road Chuck & Kathy Kohlbeck
Bozeman, MT 59718 Chuck, cell (406) 580-8255
Garrett & Katelyn Knebel
(406) 580-9565
SHR@storeyherefordranch.com

THOMAS HEREFORDS

HORNED P.O. Box 330055 POLLED
Gold Creek, MT 59733
BULLS & HEIFERS FOR SALE
Richard & Shirley (406) 560-8122
Bruce (406) 544-1536
e-mail: bruce@thomasherefords.com
www.thomasherefords.com



e-mail: dwhrfrd@gmail.com
www.weaverherefords.com

Heifers for sale private treaty in the fall.
Annual bull sale the first Monday in March.

NEBRASKA

(continued on next page)

BLUEBERRY HILL FARMS

Doug Bolte, Manager

Office Phone 402/371-0931
Home Phone 402/379-1432
Cell Phone 402/640-4048
Fax 402/644-8010
email: dbolte@telebleep.com

1103 So. Grandview Drive
Norfolk, NE 68701



ESTERMANN HEREFORDS

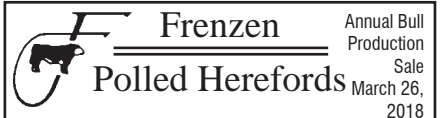
— Continuous Herd Since 1899 —
32 years of Canadian breeding

Joe, Marlene & Dan Estermann
35219 S. Somerset Rd.
Wellfleet, NE 69170
Phone: 308-963-4473
E-mail: jesteremann@nebnet.net

Quality Cattle That Work



Lowell & Carol 48979 Nordic Road
(402) 589-1347 Spencer, NE 68777



Females and Club Calves
for sale at private treaty.

Galen, Gwen and Eric Frenzen
50802 N. Edgewood Rd. • Fullerton, NE 68638
Galen's Cell: (308) 550-0237 • Eric's Cell: (308) 550-0238
www.frenzencattle.com

GIBSON HEREFORDS

Line 1 Breeding

LARRY AND KAREN GIBSON
35570 W. Gibson Rd.
Wallace, NE 69169
308-387-4580 ~ 308-530-6435
kgibson@nebnet.net



Show Heifers & Steers

Randy Helms Cody Helms
73031 Rd 419 303-842-9071
Holbrook, NE 68948
308-493-5312

HENKEL POLLED HEREFORDS

Pure Station
Polled L1 Dominos

GENE ERIC
402/729-5866 402/239-9838
56095 - 715 Rd. • Fairbury, NE 68352
henkelhereford@hotmail.com

HUWALDTS HEREFORDS

86423 558 Ave • Randolph, NE 68771

Ed & Marsha
Home: 402/337-0784
Cell: 402/360-4387

Angie
Cell: 402/360-4796

Keith & Virginia
402/337-0307

Email: huwed@live.com
Website: www.edhuwaldt.com

Polled Hereford Bulls & Females For Sale at Private Treaty.
Visitors Always Welcome!

JB RANCH

Polled Herefords
Milk, Muscle Performance & Weight

Bulls and Females
Always For Sale, Females
that Visitors Always Welcome! that
Perform Prolific + Disposition Produce

Jack & Bev Beeson 402/375-3404
Wayne, NE 68787 cell: 402/375-9027

Feed Efficiency, Carcass,
Moderate size, High gain
Documented proof

KEG HEREFORD RANCH

Ken & Marilyn Stephens
39753 906th Rd., Valentine, NE 69201
402-376-1267

LARSEN'S POLLED HEREFORDS

CATTLE FOR BOTH PUREBRED
AND COMMERCIAL PRODUCERS

Larry Larsen
2252 CR 25
Decatur, NE 68020
402-687-2532

Selling at
Shamrock Livestock
in O'Neill
April 13, 2017



LINTON POLLED HEREFORDS

Art & Jean Linton
77414 Hwy 183
Miller, NE 68858
Home: (308) 457-1127
Cell: (308) 293-5816
ajlinton@frontiernet.net
www.lintonpolledherefords.com

(continued from previous page)

NEBRASKA

MELCHER HEREFORDS, INC.**For Sale**

Hereford Bulls • January 28, 2017
Dehorned commercial heifers for sale now
175 Hereford heifers bred Angus
(Carter Wind Star 218)
90 red baldy heifers bred Red Angus (Conquest)

Don: 402-336-7194 • Kevin: 402-340-6189
86288 Voyager Rd., Page, NE 68766

**MONAHAN
CATTLE
COMPANY**

Brand of Quality
Herefords

P.O. Box 306 • Hyannis, NE 69305

James (308) 458-8019
Bryan (308) 458-8021
Bob (308) 458-8024

Melissa Buehler, Executive Director
1519 F Street, Fairbury, NE 68352 • (402) 239-9712
www.nebraskaherefords.com

**Ridder
Hereford Ranch**

John & Mary Ridder
Callaway, Nebraska

308/836-4430
mailbag@RidderRanch.com
www.ridderranch.com

• Sale first Thursday in February •

**SCHUTTE &
SONS**

1417 Road 2100
Guide Rock, NE 68942-8099
Ron Schutte
402-756-3462 • 402-746-4378 cell
rnschutte@gtmc.net
www.gtmc.net/schutte

Schroer Herefords

Lavern Schroer Family
2924 Road P ~ Nelson, NE 68961
402-756-7834
cell ~ 402-879-8056

Line One Herefords.
Bulls and females for sale by private treaty.

Cattle bred up, not fed up!

2017
Nebraska
Hereford
Tour Dates
Aug. 19-20

STEWART HEREFORD RANCH
Jay and Kaye Stewart
45717 875th Rd
Newport, NE 68759
Phone: (402) 244-5457
Cell: (402) 760-0961

**TEGTMEIER
POLLED HEREFORDS**

58th Annual Sale March 2018
71556 609th Ave.
Burchard, NE 68323
Russ: (402) 865-5805
www.tegtmeierpolledherefords.com

Scott & Judy McGee
Blake McGee
Melissa & Brandon Buehler
Darci & Mick Pesek
1900 G Street
Fairbury, NE 68352
Scott's Cell: 402-300-2659
www.valleycreekranch.net

**VAN NEWKIRK
HEREFORDS**

Quality Herefords Since 1892

Sale: January 15, 2018

☆ Joe Van Newkirk
Oshkosh, NE 69154
Phone: 308/778-6049

www.vannewkirkherefords.com

Vin~Mar

Cattle Company

Owners: Vince, Mary, Ryan & Bryson Bickel ~ Jerry & Suzy Bottorff

Contact Vince at 308-282-0416 or Cell: 308-360-0336

2821 630th Rd
Gordon, NE 69343
www.vinmarcattle.net
Email: vmbickel@gpcom.net

Registered Black Angus & Hereford
Visitors Welcome Anytime!

**Videoing, video sales, online sales and sale clerking.**

Buckeye
Hereford Association

Lisa Finnegan Keets, secretary
440-320-6193
ohioherefordlady@yahoo.com

Sale • March 2017 • Columbus, OH
www.BuckeyeHerefords.com

**The Livestock
Link**

THE BEST IN LIVESTOCK VIDEO PRESENTATION

Contact us if you have questions.

Marc Hotchkiss • marc@thelivestocklink.com

Phil Eggers • phil@thelivestocklink.com

Aaron Friedt, Online Sales

aaron@thelivestocklink.com

13823 Beaver Creek Place, Reva, SD 57651

www.thelivestocklink.com

OREGON

Mike & Carol Allison
70641 Kunze Lane • Boardman, OR 97818
(541) 571-7139
(541) 571-7313

David and Lynda Bird
Phone: (541) 742-5436
E-mail: bird@pinetel.com
45863 Crow Rd.
Halfway, Oregon 97834

Chandler Herefords Inc.

Wide, Thick, Long, Correct, Beautiful, Balanced Herefords
127 Years in the business

541-523-2166
George
541-403-0125
Duane
541-403-0124

17578 Chandler Lane
Baker City, OR 97814
www.chandlerherefords.com

E-mail: chandlerhereford1889@yahoo.com

605/866-4495
www.herefordamerica.com
jbh@herefordamerica.com

OKLAHOMA

42590 SALMON CREEK ROAD
BAKER CITY, OR 97814
Bob Harrell, Jr. 541/523-4322
Don Schafer 541/403-0008
Registered Hereford Cattle and Quarter Horses
ANNUAL SALE FIRST MONDAY IN MARCH

2211 S. 29th Co. Rd. Blackwell, OK 74631
SALE NOVEMBER 1
Newkirk, OK
Melvin Young
Herdsmen
580-761-9257
Nancy Bowling
580-362-5026
nkbowling@yahoo.com

Hazlett-Turner Ranch Bloodlines
Disposition & Thickness Bred
"Located in the heart of the Old Hereford Heaven"
next ranch north of the famed former Turner Ranch on Hwy 1
Mr. & Mrs. Richard C. Day & Family
3284 St Hwy 1 W • Roff, OK 74865
580-456-7567

Thick, substantive & efficient!
J.H. "Jim" Lents
25398 SW Coombs Rd
Indianapolis, OK 73552
Home 580-246-3560
Cell 580-704-3560
jhlents@sirinet.net





More Bull Sale Highlights....



Kreth Cattle sold both Herefords and Angus in their 52nd annual sale at the farm near Mt. Vernon, SD.

8 Yearling Bulls For Sale
— Line One Breeding —
All sired by HH Advance 3016

For more info contact: **John & Rodney Brown**
4288 93rd Ave. NE
Crary, ND 58327
John: 701-741-1086
Rodney: 701-739-7133




Bulls ready for the Gant Polled Hereford Sale, Geddes, SD. Gants postponed their sale due to a winter storm but had a good crowd turn out for their video sale (left).

Photos by Phil Eggers

NORTH DAKOTA

Behm Polled Herefords

Larry, Aneica,
Lindsey, Nicole and Logan Behm
5944 Hwy. 1806
Beulah, ND 58523
701-873-2646
e-mail: albehm@westriv.com



BOEHNKE HEREFORD RANCH

Registered Herefords Since 1946

Unpampered • Functional • Sound
Cattle for Sale at All Times

8424 4th Ave N.E.
Kramer, ND 58748
Jeff 701-359-4450 • Jared 701-201-0445
e-mail: jboehnke@utma.com

CARTER'S / PENNER POLLED HEREFORDS / LAND & CATTLE



Annual Bull Sale
at the farm in Rocklake, ND
1st Saturday in February

Jimmy Carter Jay & Malynda Penner
P.O. Box 55 28074 440th Ave
Rocklake, ND 58365 Freeman, SD 57029
701-266-5575 605-929-7314
mrs.penner@hotmail.com

DIAMOND R HEREFORDS

Randy & Julie Lemm Family
623 166th Ave. SE
Hillsboro, ND 58045
(701) 636-5465
rdlemm@yahoo.com

Merlin & Eunice Fornes

Quality grass-raised
Polled Herefords



12169 56th St. SE
Kathryn, ND 58049
(701) 924-8360

FRIEDT HEREFORDS

Production Sale Feb. 14, 2018
& Private Treaty

Gary, Kirsten & Aaron
8733 55th St. SW • Mott, ND 58646
701/824-2300 • Gary's cell: 701/290-7231
Megan & Dusty Dukart 701/290-7230
Lindsey & Drew Courtney
E-mail: gfriedt@hotmail.com
Website: www.friedtherefords.com

HELBLING HEREFORDS

Registered and commercial.
Bulls and females for sale any time.
— Private Treaty —

4785 Co. Rd. 83 • Mandan, ND 58554

Jim Fred Wayne
701-663-7123 701-663-0137 701-471-4391

E-mail: helbling95@msn.com

HUSO & SONS HEREFORDS

Bred For Better Beef™
Jim Huso

701.326.4278 or 701.326.4176 (evenings)
11922 17th St. NE Aneta, ND 58212
www.husoandsons.com

MIDWAY POLLED HEREFORDS

7480 26th St.
Sheyenne, ND 58374

Doug & Ann: 701/996-3111
Bill, Karen, Katie & Whitney:
701/996-3300
midwayph@gondtc.com
Herdsman: Jake Burkhardtsmeier
Visitors Always Welcome

MRNAK HEREFORD RANCH

ANNUAL SALE Feb. 11, 2018 SALE IN BOWMAN, ND

14503 91st St. SW • Bowman, ND 58623
Marlene 701/574-3124
Wayne, Jill & Robyn 701/574-3172
Terry & Andy 701/574-3193
Brent & Jenna 701-206-0604

www.mrnakherefords.com

NORTH DAKOTA HEREFORD ASSN.

Joana Friesz
Sec/Treas.



PO Box 67
New Salem, ND 58563
701/843-8750 • 701/400-8744 cell
701/843-8744 work
joana@northlandinsuranceagency.com

OLSON Hereford Ranch

Carl, Lindsay, Casey, Dru & Stetson Olson
16068 24th St SE • Argusville, ND 58005
ranch: 701/484-5779 • cell: 701/361-0684
Ed & Jeanne Olson • 701/238-3601

Red Power Bull Sale - Feb. 15, 2018
www.olsonredpower.com
E-mail: olsoncandc@aol.com

PELTON POLLED HEREFORDS



We produce Polled Herefords
for the Commercial Cowman

Craig 40 93rd Ave. NW
Kayla & Kain Halliday, ND 58636
cell: 701-260-0058 • 701-548-8243
craigp@ndgateway.com

North Star Classic Hereford Show & Sale

December 2017
Valley City, ND

Plus NDHA Annual Meeting and Banquet

Contact Joana Friesz for more info.:
701/843-8750 • 701/400-8744 cell
701/843-8744 work
joana@northlandinsuranceagency.com

Stroh HEREFORD RANCH

Over 50 years of Registered Herefords

TONY & MIKE STROH
10550 Hwy. 200 Killdeer, ND 58640
701/764-5217 701/573-4373

Annual Sale Feb. 1, 2018

Winter Ranch

Quality Polled Hereford Cattle
1990 10th St. NE
Goodrich, ND 58444


Jason & Linda • 701-884-2424
Kevin & Julie Bender • 701-884-2417



Visitors Always Welcome
Stop Anytime

SOUTH DAKOTA

... more South Dakota on next page

Jim BAKER

HEREFORD RANCH
 P.O. Box 2769 • Rapid City, SD 57709
BULL SALE: Feb. 10, 2018
 Jim 605/923-2925 • 381-9519 cell
 E-mail: jbakereherefords@gmail.com
 www.bakereherefords.com

JZ Bar JZ Ranches
 Homozygous Polled Herefords
 Homozygous Polled Limousin
 18542 326th Ave.
 Holabird, SD 57540
Annual Production Sale
Tuesday, Feb. 20, 2018
Don/Peg/Seth Zilverberg
605/852-2966
 web site: www.barjz.com
 email: cattle@barjz.com

DVORAK HEREFORDS

LAKE ANDES, SD
 Richard & Darlene
 Jeff & Tiphany 605/384-3914 Cell: 491-2068
 Boyd & Jenni 605/487-7090 Cell: 491-7090

EGGERS Southview Farm
 Tim & Philip Eggers
 25748 S. 476th Ave.
 Sioux Falls, SD 57104
 (605) 351-5438
 ESFherefords@aol.com
1-29 Bull Run
 Bull Sale March 10, 2018
 Female & Frozen Edition Sept. 2017


FAWCETT'S ELM CREEK RANCH
 21115 344th Ave. • Ree Heights, SD 57371
 Robert Fawcett
 Keith, Cheryl, Matt & Erin: 605/870-0161
 Daniel, Kari, Hollis & Ivy: 605/870-6172
 Weston & Kristin Kusser: 605/478-0077
 www.fawcettselmcreekranch.com
Bull & Female Sale • February 12, 2018

FINK

 Mike & Marvin Fink
 P.O. Box 184 • 43610 SD Hwy 42
 Bridgewater, SD 57319
 Phone: (605) 729-2515
 Cell Phone: (605) 999-2075
 www.sites.google.com/site/finkpolledherefords
 E-mail: swamprat@unitelst.com

FREDERICKSON RANCH

Pyramid Beef Bull Sale
 First Saturday in December
 Mark & Mary Kay
 Frederickson
 19975 Bear Ridge Rd.
 Spearfish, SD 57783
 605/642-2139
 320/808-6691 (cell)
 Nate & Jayna
 Frederickson
 605/254-4872 (cell)
 Shawn & Sarah
 Tatman
 307/673-4381


Gant Polled Herefords

 Box 15 • Geddes, South Dakota
Mark • Phone (605) 337-2340
Dennis • Phone (605) 337-2564
 2 year-old Angus & Polled Hereford
BULL SALE
February 23, 2018
 Geddes, SD

Hanson's Polled Herefords
 Sherry Hanson
 15477 409th Ave.
 Conde, SD 57434
 Cell: 605-382-7477
 hanson_herefords@hotmail.com

HILLSVIEW FARMS
Polled Hereford bulls
for sale private treaty Feb. 10, 2018
at the farm
 Darwin & Cindy Aman
 Andrew — Sam — Alex
 32824 119th St. • Eureka, SD 57437
 (605) 284-2721
 dcaman@valleytel.net


Hoffman HEREFORDS

 Colin & Mary Beth Hoffman
 (605) 439-3623
11341 357 Ave.
Leola, SD 57456-7105
 Visit our website at
 www.hoffmanherefords.com

HORA HEREFORDS

 Suppliers of Show Cattle
 Steers & Heifers
 Jim & Karla Hora
 27718 423rd Ave. • Parkston, SD 57366
 (605) 928-3008 • Cell (605) 770-3008
 E-mail: jhora@santel.net

Ad deadline for the September issue of Hereford America is August 5.

K&B HEREFORDS & ANGUS
 17309 322nd Ave.
 Onida, SD 57564
 E-mail: kbherefords@venturecomm.net
 Kirk: 605-973-2351 Cell: 769-9991
 Brooke: 605-765-2248 Cell: 769-9992
 Ken & Bonnie: 605-765-2335 Cell: 769-9999

KLAGES HEREFORDS

 Quality seedstock for sale
 Jeff & Mary Klages
 64090 410th St
 Ortonville, MN 56278
 ph/fax (320) 273-2163
 jmkklages@fedtelirect.net

Jerry Knippling and Sons
 Registered and Commercial Herefords
Internet bull sale on KnipplingCattle.com
 Gann Valley, SD 57341
 Randy 605/680-3185
 Garin 605/680-4637

LEDDY
 Horned - Polled and Red
HEREFORDS and ANGUS
 Using the Best A.I. Sires Available.
 Bulls, Females and Club Calves For Sale.
 GENE 605/432-5182
 Cell: 605/530-1659
 WADE & LORI REBECCA & ALLISON
 605/432-9054
 Cell: 949-0630
 47296 153rd Street • Twin Brooks, SD 57269
 — Complete Dispersion September 30 —
 e-mail: wledddy@tnics.com

Nuhsbaumer Herefords
 Steve, Amy & Casey
 Zell, SD
 (605) 450-0550
 Bulls for sale private treaty... please call for more information.
 www.nuhsbaumerherefords.com
 Visitors Welcome e-mail: sanuhs@nrctv.com
 Directions: from Zell, 3 m. West on Hwy 212, 5 1/2 South

OLLERICH BROTHERS HEREFORDS
 Over 45 years in the Registered Hereford Business
 29188 303rd Ave
 Clearfield, SD 57580
 (605) 557-3246
 www.ollerichbrothersherefords.com
Bulls For Sale Privately
JEROME JAMES

Home Raised First Cross Black Baldy Replacement Heifer Calves

Top End Sell at Philip Livestock Auction the end of April
 Bill Parsons
 19955 228th Ave.
 Milesville, SD 57553
 605-544-3247

RCR Polled Herefords

 — Visitors Always Welcome —
 James & Bonnie
 Lake Andes, SD • James 605/481-1936
 Michael & Wendy
 Andrew • Tim • Nick • Makayla
 Colton, SD • Michael 605/351-5123
 Tim 605/481-8498 • Nick 605/553-6050

RAUSCH HEREFORDS
 Hoven, SD 57450
 Visitors Welcome
• Sale Third Mon. in February •
 Vern • Jerry • Shannon • Joel
Phone 1-800-6HEREFORD or 605/948-2146
 2 miles west of Hoven on Hwy. 20
 e-mail: rauschherf@rauschherefords.com
 Website: www.RauschHerefords.com

Ravine Creek Ranch

 The Bischoffs
 Huron, SD 57350
SALE MARCH 3, 2018
• 605/352-5530 •
 E-mail: ravinecr@santel.net

Schuetz Land & Cattle Co., Inc.

 Raising quality commercial Hereford cattle for over 60 years.
 Jim & Judy Schuetz 605-852-2789
 Jerry & Kathy Schuetz 605-852-2046
 PO Box 266 slc@venturecomm.net
 Highmore, SD 57345 www.slc-herefords.com

Simon Herefords
 Low maintenance, feed efficient Hereford cattle
 Brian & Colleen Simon
 Seneca, SD 57473
 Home: 605/436-6725
 Cell: 605/765-4564
 bcsimon@venturecomm.net
 www.simonherefords.com
Selling bulls & heifers private treaty.

South Dakota Hereford Association

 Mark and Jeanne Johnson, managers
 South Dakota Hereford Association
 46473 289th St.
 Centerville, SD 57014
 Jeanne.Johnson@yahoo.com
 www.southdakotaherefords.org

Stenberg Herefords
 Dave & Audrey Stenberg
 605/997-2594
 Cell 605/530-6002
 Cody Williams: 605/695-0931
Colman, SD

THORSON HEREFORDS

 Doug and Nancy Thorson
 22750 Cottonwood Road
 Quinn, SD 57775
 605-859-3538
 we02much@gwtc.net
 www.thorsonherefords.com
Visitors welcome at the Ranch

... continued

SOUTH DAKOTA

Tricky's Herefords

Dick & Betty Wettlaufer
(605) 485-2648 • Cell: (605) 270-3465
44132 234th St. • Winfred, SD 57076-7318

E-mail: rwettlaufer@triotel.net
www.TrickysHerefords.com

BULL SALE • March 2018 • Howard, SD

Wagner Herefords

Reese & Elly Jo Wagner
39365 182nd St.
Redfield, SD 57469
Reese 605-450-1085
Elly Jo 605-450-9790
wagnerherefords.com

Bull Sale • Monday, March 19, 2018

POLLED HEREFORDS

Since 1947

Bulls and Heifers for sale at the farm

DEL & RUTH WOOD
WOODCREST FARMS
Cresbard, SD 57435
(605) 324-3289

ZENS HEREFORDS

*Bulls, Heifers and Show Steers
Private Treaty Sales*

Harley, Matt & Mark Zens
Canova, SD 57321

Phone (605) 523-2655
Matt (605) 310-5782 cell
hrzens@yahoo.com
www.zensherefords.com

SERVICES

A2Z PRINTING

PO Box 35 701-523-4656
306 Hwy 12 W Ste C 888-768-4656
Bowman, ND 58623 Fax 701-523-4756
email: a2zprint@ndsupernet.com

American Live Stock
A MARKEL Insurance Company

Cheri & Jim Gies
Cattle and Equine Insurance

19381 CR 74
Eaton, CO 80651
Tel/Fax (970) 454-3836
Cell (970) 590-0500
cmgies@msn.com



All work done by Cattlemen for Cattlemen



Cattlemen's Livestock Services

Fence building and repair.
Corral building, pasture clearing, bulldozer,
backhoe services, livestock care, water lines
installed and barn building.
Pomona, KS
785-214-9532

El Molino Sawmill



P.O. Box 1106
Alto, NM 88312
Phone: 575/336-1237 • Cell: 575/808-0860
Email: elmolino@valornet.com
www.elmolinosawmill.com

BEN ROUDABUSH Ph. 605-996-9100
Manager Fax 605-995-0611
broudabush@crinet.com

Genex



Dakota Sire Service

Semen Collection, Freezing, Shipping,
Storage, Sire Housing & Conditioning
40275 - 257th Street Mitchell, SD 57301

HANDEL MARKETING, LLC

Private Treaty Sales ♦ Ring Service ♦ Insurance
Order Buying and Selling Commercial &
Registered Breeding Stock & Feeder Cattle

Art & Pat Handel 605/391-8233
handelhereford@aol.com 1501 Summit Blvd.
www.arthandelsattle.com Rapid City, SD 57701

HIGH PLAINS GENETICS, LLC



For All Your
Equine & Bovine
Reproductive Needs



(605) 787-4808
www.high-plainsgenetics.com

The Livestock Link

www.TheLivestockLink.com

For more information contact
Marc Hotchkiss at 605/490-1513 or 605/210-1956

Livestock Video Services, Online Bidding & Video Sales

- Ranch Video Documentaries
- Sale Clerking
- Any Breed —



Steer In Trailer Sales



New & Used
Stock & Horse Trailers
Flatbeds - Mats
Cargo Trailers

Located at I-90 and Hwy. 287

(406) 285-4300
29 Bronco Drive
Three Forks, MT 59752 Fax: (406) 285-4146
www.steerin.com 1-877-335-5372

TEXAS

Barber Ranch

Barber Ranch 806-235-3692
Justin Barber 806-681-5528
Brett Barber 806-681-2457
Terri Barber 817-727-6107
Jason Barber 817-718-5821
Dale Barber 806-673-1965
Mary Barber 806-930-6917

10175 F.M. 3138 • Channing, TX 79018
barberranch@wildblue.net • www.barberranch.com

Sale Date: **Fall of 2017**
noon • at the ranch



For more information contact:
Dimitri Mataragas
214-649-0071 cell
David Caraway
903-802-3373 cell
P.O. Box 751 • 8027 F.M. 1616,
Athens, TX 75751

www.ironlakeranch.com

PPHF

"Prefix of Performance"

PRAUSE POLLED HEREFORD FARMS
1957 Morris Community Rd.
Yoakum, TX 77995-5224
www.prausepolledherefords.com

Leslie & Gay Prause 361-741-6495
361-293-4213
Robert, Lorna & Kaci Herman 361-293-5324
361-293-1533

Still River Ranch

Marble Up!

Larry Woodson
214-491-7017
larrywoodson@gmail.com
www.stillriverranch.com



TRIPLE L RANCH

BOBBY & JARED LIDE
714 FM 1366 • MEXIA, TX 76667
(P) 254.739.2911 • (CELL) 254.625.3800
JARED (CELL) 254.625.3806

www.triplelblackherefords.com



Whitehead Herefords

Proven Bloodlines...Predictable Results!
www.whiteheadherefords.com

Wendee Whitehead
512-970-1595
McDade, Texas central
Rusk, Texas East
email: drwendee@yahoo.com



UTAH

Ekker Herefords

Jim Ekker 435/839-3454 Cell # 435/840-2699



1004 Ekker Lane • Vernon, UT 84080
~ Bulls & Females for Sale ~

**Breeding Quality
Herefords Since 1985**

*Line One
performance bred Herefords*
www.johansenherefords.com

Castle Dale, UT
Jonathan 435-650-8466
Craig 435-820-8490



WASHINGTON



CX Ranch

Bill and Terrilie Cox
688 Pataha St.
Pomeroy, WA 99347

509-566-7050 cell
cxranch@live.com

Dick & Karen Yoder
8941 Glendale Rd.
Custer, WA 98240
(360) 354-2945

Dale & Tammy Yoder
Katie & Clark
9279 Weidkamp Road
Lynden, WA 98264
(360) 354-6605

**Yoricka
Farm, Inc.**
Registered Herefords

email: YorickaFm@aol.com

WISCONSIN



**KEVIN L. STORK
KODY L. STORK**
626 EAST THIRD
NEW RICHMOND, WI 54017

(715) 381-3770 Kevin
(715) 220-0021 Kody
(715) 246-2580 fax

E-mail: kstork@pressenter.com

LIETZAU HEREFORD FARM

Harold & Connie Lietzau
Tammy, Dan, Kiara & Austin
Troy, Michelle, Jaydon, Devon & Jocelyn
Taylor & Ty
7477 Iband Ave. • Sparta, WI 54656
Cell 608/633-2875

OWEGO STOCK FARM
REGISTERED POLLED HEREFORDS

MARVIN ESPENSCHIED FAMILY

(608) 543-3778 12044 State Hwy 78
Fax: (608) 543-3824 Argyle, WI 53504
Email: wlbaosf@mhtc.net

Thanks to our customers!

WIRTH Herefords

NEW RICHMOND, WI

Gene & Cheryl Wirth
(715) 247-5217

Lance Brent
(715) 377-6876 (715) 760-1727
www.wirthshowcattle.com

HEREFORD

America

www.HerefordAmerica.com

7 Issues Per Year
• September through April •

**For more information contact
Jill Hotchkiss at 605/866-4495**

WYOMING

The Berry's

WHERE
COWMEN
BUY BULLS

Bull Sale October 16, 2017

Jay and Janice Berry
3049 County Road 225
Cheyenne, WY 82009
(307) 634-5178

E-mail: jaberryherefords@msn.com
www.WhereCowmenBuyBulls.com



**LARGENT
and SONS**
Hereford Cattle
Since 1902

• Sale November 16, 2017 •

P.O. Box 66 • Kaycee, WY 82639
(307) 738-2443 or (307) 267-3229
www.largentandsons.com
largentandsons@yahoo.com

McClun's Lazy JM Ranch

Producing problem free
Polled Herefords and Angus.

SALE April 13, 2017
Private treaty sales any time.

Jim & Jerri McClun
1929 Road 60 • Veteran, WY 82243
Ph. 307-837-2524

Jeff & Kari McClun
1930 Road 60 • Veteran, WY 82243
Ph. 307-837-2554 • jkmcclun@wyomail.com

**MIDDLESWARTH
RANCH**
Registered Herefords
• Torrington, WY •

Jay, Marsha and Jessica
307.532.5427

6MBulls@hughes.net
www.middleswarthherefords.com

GEORGE OCHSNER RANCH INC.
PRIVATE TREATY SALES OF
HEREFORD AND ANGUS BULLS
REGISTERED AND COMMERCIAL BRED HEIFERS
QUALITYBULLS.COM

GEORGE & RUBY OCHSNER

307/532-5892

E-MAIL: OCHSNERRANCH@GMAIL.COM

Blake & Rustin & Steve & Rod & Debbie
Chrissy Britte Roth Dixie Roth Ochsner
Ochsner 307/575-2709 307/532-7191 307/532-2457
307/532-3282

**The Livestock
Link**

605/490-1513
605/210-1956

STICKS & STONES RANCH

• Gene & Cindy Stillahn and Family •
Christopher, Amy and Trey

3902 County Road 203
Cheyenne, WY 82007
(307) 635-6716 • cell (307) 421-1592
E-mail: gcstick@mllect.com

THE NED & JAN WARD QUALITY PROGRAM

...honest, efficient and predictable Polled Herefords.

Ned, Jan & Bell Ward
247A Decker Road • Sheridan, WY 82801
Phone and Fax 307/672-3248
Ned (c) 307/751-8298 • Jan (c) 307/751-9470
Email: njwardherefords@gmail.com
www.NJWHerefords.com
Annual BULL SALE in March
Bulls • Females • Semen • Embryos

S.E. West & Sons

• Herefords since 1949 •

Selling Private Treaty and at
Black Hills Stock Show
Nebraska Cattleman's Classic
Bulls & Females • Club Calves

Lusk, Wyoming
Brett 307/334-2546

**WHITE
Cattle Company**

Joel & Karri White

912 Fullerton Avenue

Buffalo, WY 82834

C: 307.217.0367 H: 307.684-7881
whitecattlecompany@gmail.com

Bulls, Females, Embryos & Semen
Available



**Starts the
second Saturday
of August
every year.**

307/358-2398

wystatefair.com

wsf@netcommander.com

(Supported by Converse County Tourism.com)

SEMEN FOR SALE



CL1 DOMINO 589C 43575976 — Calved: Jan. 14, 2015
Sire: GB L1 Domino 177R x Dam: CL1 DOMINETTE 1116Y

589 is developing into a big bull with excellent spring of rib, great rear end thickness and a powerful hind leg. He is a very athletic bull that moves very well. His first calves out of Angus cows averaged 80 lbs. The first calves at Fishers have the wow factor. The Fishers and Berrys will have bunch of calves on the ground.

BW 3.1 WW 60 YW 84 MM 31 M&G 60 UDDR 1.32
TEAT 1.31 SC 1.2 CW 68 FAT .004 REA -.02 MARB .36

**SEMEN \$25
PER STRAW**

**CERTIFICATES
\$65**

**COMMERCIAL
PRICES
AVAILABLE**



CL 1 DOMINO 314A 43379692 — Calved: Jan. 5, 2013
Sire: CL 1 DOMINO 105Y x Dam: CL1 DOMINETTE 1116Y

314 sires light birth weight, short marked and pigmented calves that are born extremely easy then just get up and grow. 23 sons at Berry's fall sale averaged \$5,565. The overall bull average was \$4,764. 314 daughters that are now calving have excellent udders, great milk, calve unassisted and show good mothering ability. A commercial producer bought 100 straws in 2014 and waited for the outcome before purchasing 100 more straws in 2016. The true test!

BW 0.0 WW 50 YW 77 MM 45 M&G 70 UDDR 1.13
TEAT 1.14 SC 1.2 CW 62 FAT .054 REA -.03 MARB .15

CT THE LOWELL FISHER FAMILY CT

Est. 1943
48979 Nordic Rd., Spencer, NE 68777

Lowell and Carol
402-589-1347
402-340-6084 cell

Steven and Dalene
Fisher
918-440-4848

Nathan Gillaspie,
Herdsman
816-401-9677

The Berry's WHERE COWMEN BUY BULLS

Jay and Janice Berry • 3049 C.R. 225, Cheyenne, WY 82009
307-634-5178 • www.wherewomenbuybulls.com
ANNUAL SALE OCT. 16, 2018 - FEMALES FOR SALE

25 HEIFERS FOR SALE

Same quality and bloodlines as our Denver carload
**5 PICKS OUT OF OUR TOP 10 2016 SPRING HEIFERS
AT \$2750.00 EA.**

**10 TOP QUALITY REPLACEMENT HEIFERS
AT \$2400.0 EA.**

**10 REPLACEMENT QUALITY REGISTERED HEIFERS
AT \$1600.00 EA.**

TAKE ALL 25 FOR \$1850.00 EA.

PICTURES AND VIDEOS AVAILABLE — SHIPPING AVAILABLE

CT THE LOWELL FISHER FAMILY CT

Est. 1943
48979 Nordic Rd., Spencer, NE 68777

Lowell and Carol
402-589-1347
402-340-6084 cell

Steven and Dalene
Fisher
918-440-4848

Nathan Gillaspie,
Herdsman
816-401-9677



CL 1 DOMINO 0145X 1ET



CL 1 DOMINO 314A