

**The Largest Privately Owned Hereford Newspaper in North America**

The one that's read "from cover to cover." • Visit us on the web at: [www.herefordamerica.com](http://www.herefordamerica.com)

*Serving Commercial Cattlemen & Registered Hereford Breeders*

Vol. 20., No. 1

Published by: Hereford America, Inc. • 13823 Beaver Creek Place • Reva, SD 57651

September 2016

## Editorial Comments...

### Jill Bayers Hotchkiss



Jill Hotchkiss

It's hard to believe but *Hereford America* is 20 years old! To say the least, it has been an interesting ride!

The original concept for *Hereford America* was developed when my dad, Byron Bayers, and I were each producing a single-state Hereford publication. I was doing the *South Dakota Hereford Times* and dad was producing the *Montana Hereford News*. Things were going along fine with each of the publications other than printing and mailing costs continued to increase and since the customer bases were essentially fixed to only ini-

(continued on page 29)

### Byron Bayers



Byron Bayers

The Old Historic Round Barn at Twin Bridges. This story will start with the advertising, and web site, being circulated under the title Bing/Round Barn at Twin Bridges: and we quote: "The Round Barn at Twin Bridges is located at the base of the Tobacco Root mountain range, surrounded by fields and land that was home to Lewis and Clark for several weeks during their historic expedition. A few miles to the west is the confluence of four of Montana's most famous fly fishing rivers. It is on the route for those traveling between Yel-

(continued on page 3)

# Montana's Ehlke Herefords — Looking to the Future

By Byron Bayers

It was a beautiful early July morning as I motored over to Townsend to do this story on the Ehlke Hereford operation. It was about a 100 mile drive as I traveled west of the Tobacco Root Mountains down the interstate to Three Forks and then motoring up highway 287 to Townsend. As I turned east at Townsend, to go to the Ehlke's upper ranch, I was facing the Big Belt mountain range. As I gained altitude up the Lewis & Clark highway, off to the left was the big Canyon Ferry Lake traversing much of the valley. As I turned on up the mountain, Mount Baldy was lurking up in the air at its 9,472 foot altitude. When I arrived at Mark and Della's residence I found a note on the door that they were both busy doing varied chores and they would be back before long, and to make self a cup of coffee and went out on the deck facing east and viewed the beautiful scenery of the Belt Mountains, which could not have been more stunning that morning, with clear blue skies, and a crisp mountain air that is typical in Montana. That area of Montana has to be one of its most beautiful and pristine ranching areas of the state, and what a won-



The Ehlke family runs their Hereford cowherd in one of the most beautiful, mountainous areas of Montana, near Townsend.

derful place to live and raise registered Herefords.

In 1995, Mark and Della owned just a few registered Herefords that they had purchased from Hilger Herefords north of Helena. (One of

idea of building their own purebred registered Hereford herd, which had been the goal of Mark and Della's since they were married. On this trip an arrangement was consummated between Ehlkes and Bayers for the

Ehlkes to lease the Bayers registered herd, with the option to later buy the herd, and the herd was moved to the Townsend property that year. At that time the Bayers herd was 77 years in existence and had used many of

*"We spent 10 hard, lean years getting started in the ranching business and the purebred business, but most important, it was a blessing for our lives, and I am so proud of our daughters, Lacey and Jane'a. I give thanks for the environment in which they were raised..."*

*Della Ehlke*

the old time Montana polled herds.)

When Mark and Della wanted to expand the herd more quickly they visited the Bayers Hereford Ranch at Twin Bridges, Montana, with the

the top blood lines in the breed, in the US and Canada, and was basically a horned herd. The Bayers auction sales were among the top in the nation for many years.

As Mark and Della grew the herd, and later bought it, they decided because of strong customer demand, that they would start breeding the herd polled. When the decision was made to move to polled genetics Mark had two major herds in mind to seek out. The first herd was Paul Hinderager at Anchor Polled Herefords.

(continued on page 6)



Sales & Events

CALENDAR

September

- 3

Minnesota State Fair Open Show  
St. Paul, MN
- 3

SD State Fair Open Show &  
Junior Shows  
Huron, SD
- 10

Hereford Fall Classic  
Taylorville, IL
- 10

Delaney & Atkins Genetic  
Opportunity Sale IV  
Lake Benton, MN
- 10-11

Nebraska Hereford Tour  
Broken Bow, NE
- 11

Wolff Cattle Company Open  
House & Fall Female Sale  
Leonard, ND
- 12

Loewen Herefords Compete  
Dispersion  
Waukomis, OK
- 15

ANL Polled Herefords & Guests  
Production Sale  
Steelman, SK, Canada
- 15

Hereford Crossroads Reception  
Alliance, NE
- 15

C&T Cattle Co. & Guests  
Take the Next Step Sale
- 16

Kisbey, SK, Canada  
Blair-Athol, Haroldsons & Friends  
Arcola, SK, Canada
- 16

Churchill's World Class Female  
Sale  
Manhattan, MT
- 21

Fawcett's Elm Creek Ranch  
Online Fall Female Sale  
Ree Heights, SD
- 22

Mohican West & Guests Sale  
Laurel, MT
- 23-24

Montana Hereford Tour  
Belgrade, MT
- 24

DeanaJak Farms Traditions of the  
Cove Sale  
New Enterprise, PA
- 24

Minnesota Hereford Tour  
Northfield, MN
- 26

Hoffman Ranch Female Sale  
Thedford, NE

October

- 1

Journagan Ranch Genetically  
Yours 25th Anniversary Sale  
Springfield, MO

- 1

Colyer Herefords 15th Annual  
Fall Female Sale  
Bruneau, ID
- 6

Dudley Bros. 55th Annual Bull  
Sale  
Comanche, TX
- 8

Iron Lake Ranch Production Sale  
Athens, TX
- 8

Remitall West Production Sale  
Olds, Alberta, Canada
- 14

Hereford Harvest Sale  
Vibank, SK, Canada
- 18

Strang Herefords & Angus 37th  
Annual Sale  
Meeker, CO
- 20

WLB Livestock Complete  
Dispersal Sale  
Douglas, Manitoba, Canada
- 26

Western Traditions Internet Sale
- 27-28

Jamison Herefords/Horse Sale  
Quinter, KS
- 28-29

AHA Annual Meeting  
Kansas City, MO
- 29-30

American Royal Show & Sale  
Kansas City, MO

November

- 8

Bowling Ranch Hereford Sale  
Newkirk, OK
- 11

SDHA Annual Meeting &  
Banquet  
Brookings, SD
- 12

SD Excellence Sale  
Brookings, SD

December

- 3

Western Nugget National  
Hereford Show and Sale  
Reno, NV
- 3

Pyramid Beef Sale  
St. Onge, SD
- 9

Go-Pher the Purple  
Hutchinson, MN
- 17-18

Guilford Hereford & Angus  
Dispersal  
Swift Current, SK

Subscribe Now!

DON'T MISS AN ISSUE!

Canadian & Foreign subscriptions —  
\$30 U.S. funds, one year  
\$55 U.S. funds, two years

U.S. subscriptions —  
\$20 - one year, third class  
\$30 - one year, first class  
\$35 - two years, third class  
\$55 - two years 1st class

(Advertisers placing \$150 or more in advertising for the season will receive a free first class subscription.)

Please let us know if we need to correct your address or if your local post office has started using "911 Locator" addresses.

Note: When submitting an address we need to have 3 lines including a PO Box, Route or Street for the second line. Thanks!

Send new or corrected address to:  
Hereford America  
13823 Beaver Creek Place  
Reva, SD 57651

Credit Card Payments  
You may pay your subscription or advertising bill online by credit card through our website or by calling us with your credit card information.

Your subscription expiration date is printed above your name on the front page label area. If you wish to receive your paper in a more timely manner or live in a southern state please consider a first class subscription for faster postal delivery.

For questions call Marc Hotchkiss at 605/866-4495.  
If your address changes please be sure to notify us.

Name

Address

City

State Zip

Phone E-mail

Commercial Breeder Registered Hereford Breeder Polled  
Registered Breeder, Other Breed Other Horned  
Both

Signature

September 2016

(Required for Post Office Regulations)

The official Hereford publication for the states of  
South Dakota, North Dakota, Wyoming & Minnesota.

HEREFORD AMERICA

605/866-4495

WWW.HEREFORDAMERICA.COM

Main Office:  
13823 Beaver Creek Place, Reva, SD 57651 • Fax: 605/866-4494

PUBLISHED 7 TIMES A YEAR:  
SEPTEMBER-APRIL/MAY

(Nov/Dec is a combined issue)

by Hereford America, Inc., a family owned & operated business.  
Jill and Marc Hotchkiss • Byron Bayers • Taylor Vroman

Jill Hotchkiss - jbh@herefordamerica.com • Cell: 605/490-1409  
Marc Hotchkiss - marc@herefordamerica.com • Cell: 605/490-1513  
Byron Bayers - bayers@3rivers.net  
Byron's Phone: 406/684-5465 • Fax: 406/684-5499  
Byron Bayers, PO Box 410, Twin Bridges, MT 59754

Editors: Jill Hotchkiss, Byron Bayers

Ad Design/ Production: Robin Engel, Jill Hotchkiss

Writers: Byron Bayers, Jill Hotchkiss, B. Lynn Gordon, Mary Ridder, Kayla Sargent

Editorial Assistant: Taylor Vroman

Proofreaders: June Hotchkiss, Taylor Vroman

Video Production & Website Development: Jill Hotchkiss, Taylor Vroman, Robin Engel

Opinions expressed by our editors, columnists, letters to the editor or other writers or news sources are not necessarily those of the management. We welcome your comments, ideas, suggestions and letters to the editor. All correspondence (including e-mails) must be signed or must clearly identify the name of the author.

Hereford America shall not be liable for slight changes or typographical errors that lessen the value of an advertisement. Hereford America's liability for errors or omissions in connection with an advertisement is strictly limited to publication of the advertisement in any subsequent issue or the refund of any monies paid for the advertisement. Advertising placed after deadline must be approved by the Editors. All materials for such advertising must be in by date specified by Editor. Late charges may apply. If an ad is placed and all materials are not received by date needed all attempts will be made to compile the ad from available materials. Any cancellations after deadline are subject to full charges for the ad.

Hereford America reserves the right to refuse advertising to anyone.

All contents Copyright 2016 by Hereford America, Inc., except Trademarks and Copyrights otherwise noted in which Hereford America, Inc. disclaims any proprietary interest.



## Byron's Editorial....

(continued from page 1)

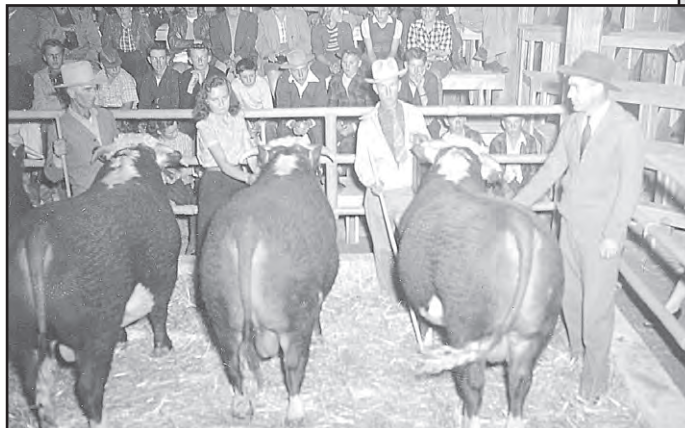
lowstone and Glacier National Park. It is just down the road from Virginia City, Montana's first Territorial Capitol and America's best preserved Gold Rush era town.

Having your event at the Round Barn will give you and your guests a truly unique experience that they won't soon forget. The Round Barn is adaptable for indoor and outdoor events. The large dance floor and ample interior space can easily accommodate a wedding for 250 guests. Outdoors, there is a wedding ceremony area with endless views of the mountains, green pastures and the Jefferson River Valley.

In 2015 the Round Barn was thoughtfully renovated and restored to accommodate your wedding or event. The tiered wedding cake style of the exterior was maintained. Inside the Barn, ceilings were opened up to maximize light and reveal the beauty of the structure. Lighting, restrooms, dressing rooms, a large catering kitchen, as well as outdoor cooking area, bar area, and audio/visual equipment were added. These amenities in addition to the existing character and history of The Round Barn will give you and your guests a lifetime of memories." (end of quote)

In July of 2016 I was invited to the Hamilton Ranch annual party which was held at the Round Barn. The Hamilton Ranch is owned by SRI Holdings, the people who now own the barn, and they have an annual party for their employees but many of the locals are also invited. As a former owner of the barn I felt very fortunate to be invited by the management. There were probably 250 people that had come to enjoy the festivities and view the barn. Our family had owned the Round Barn for approximately 60 years, and as I walked in to the now renovated Round Barn, many memories and thoughts raced through my mind. I had spent about 40 years of my life working with our Hereford cattle, and almost every one of those days included time working in the Round Barn. The famous horse Spokane (Kentucky Derby winner) was born and trained here, and the first \$100,000.00 bull from Montana was developed and sold, in the Round Barn. The dirt floor where we once exercised the show cattle, and tied up 50 sale bulls each sale, is now gone. The floor of the barn has now been concreted and a beautiful wooden floor has been installed, placed on top of the concrete. The stalls where all of the bulls were developed is now part of the main wooden floor, which is now set up for dining and dancing. The stall where Spokane was born is now a space in history, as the complete center of the barn has been opened up. The center second

floor, that once was the granary for the barn, has been completely torn out and opened up. The third story that once held the water tank, for watering the livestock, has been torn out, the whole center of the barn is completely opened up from the top to the floor. Some 30 tons of steel were put into the barn structure to strengthen the 144 year old building. The total reincarnation of the barn has been unbelievably well done. Project Manager, Lacey Wood, has done a monumental job of en-



One of the first Hereford field days in the round barn.



The round barn on bull sale day in the 1940s.

gineering the complete project, not only including the barn itself, but also in beautifying the grounds around the barn.

That night I quietly reminisced about the history of the barn and our registered Hereford cattle history with the barn. I thought about the 49 auction sales that we held there, and many of them were listed in the top ten sales of the year in which they were held, and the

(continued on page 4)

Is the Hot Air in the Presidential race having any effect on Climate Change?

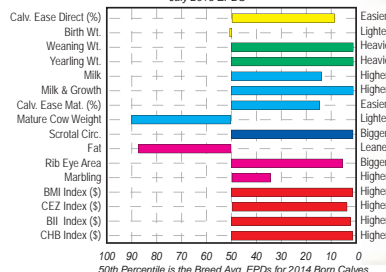
I thought I saw a rain cloud!

Surveys and Polls taken in our pastures are showing a volume number of High Quality New York, Revolution and On Targets in our 59th Bull & Female sale on the 3rd Monday of Feb. 2017

**Over 125 Bulls and 200 Females from the top of our herd will be in the sale on the 3rd Monday of Feb. 2017.**

### HYALITE ON TARGET 936

EPD Percentiles for HYALITE ON TARGET 936 (DLF, HYF, IEF) (P42986803) July 2016 EPDS



Check out our home page for our marketing programs [www.RauschHerefords.com](http://www.RauschHerefords.com)

**E-mail: [rauschherf@rauschherefords.com](mailto:rauschherf@rauschherefords.com)**

Please call, write or e-mail for more information:

**RauschHerefords.com**

14831 Hereford Road • Hoven, SD 57450

**(605) 948-2146 or 2157 or 2375**

Jerry Shannon Vern

Located 2 miles west of Hoven on Hwy. 20 and 47



America's No. 1 Dams of distinction herd. (Based on efficiency.)



## Advertisers Index

ANL Polled Herefords	35	Iron Lake Ranch	19
Blair-Athol Haroldsons	31	Journagan Ranch	29
C&T Cattle Co. & Guests	22	Loewen Polled Herefords	13
Churchill Cattle Co.	24-25	Melcher Herefords	8
Colyer Herefords	37	Minnesota Hereford Tour	14
DeanaJak Farms	11	Mohican West	15
Delaney & Atkins Fall Preview	23	Montana Hereford Tour	14
Dudley Bros.	21	Nebraska Hereford Tour	8
Ehlke Herefords	16	Ollerich Bros.	20
Estermann Herefords	5	Rausch Herefords	3
Fawcett's Elm Creek Ranch	12	Remital West	10
Feddes Herefords	7	Strang Herefords & Black Angus	4
Fisher Family, Lowell	17	The Livestock Link	38
Handel Marketing	20	Vern's Mfg.	4
Hereford America	28	Western Traditions Internet Sale	18
Hereford Fall Classic	48	Wolff Cattle Co.	6
Hereford Harvest	33	WLB Livestock	9
Hoffman Ranch	27		



The barn as it stands today, after restoration and transformation as a wedding & event venue.

(continued from page 3)

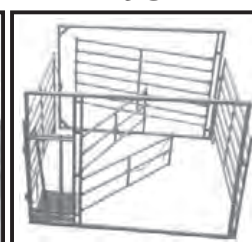
fact that we held the organization of Montana Jr. Hereford Association, and that 1,000 people attended that

day. Probably no Montana herd has had the number of show winnings that we have had, with all of the cattle developed in that barn. I remember all of the great customers that we had that came from 38 states and 4 foreign countries, and I remember the great group of people that were associated with us on the ranch working with the cattle. As the big crowd of 250 people were finishing their dinner that night, in this now luxurious old barn, and as the band started to play, I decided it was time for me to leave the grand old monarch. A night full of memories and a new beginning for the barn, with a large group

(continued on page 6)

## WE SPECIALIZE IN LIVESTOCK EQUIPMENT

[www.vernsmfg.com](http://www.vernsmfg.com)



# VERN'S MFG., INC.

20211 374th Ave. • Wessington, SD 57381-6910

PHONE: (605) 458-2269

TOLL FREE: 1-800-658-5423

FOR THE DEALER NEAREST YOU

nfac



Broadcast on LiveAuctionsTV

# 37th Annual Sale

## October 18, 2016

### High Altitude PAP Tested Cattle



BRC 175W Dandy B07 dob 03/01/14

(New Jr. Herd Sire)



CL 1 Domino 9105W



SH 157K Ribstone 217Z ET



SH 501R Domino 816U

## A Proven Program for 54 years .....

- Thick, Muscular & Calving Ease Bulls siring productive females with good udders (Hereford & Angus)
- Private Treaty bred Hereford & Angus Registered Heifers  
(Hereford AI sires: UPS Domino 3027, CL 1 Domino 105Y, CL 1 Domino 215Z; Angus AI Sire )

Sale bulls sired by • YV34 W Major Mark Lad 2Y (ET) • CL 1 Domino 9105W • SH 157K Ribstone 217Z ET  
• SH 501R Domino 816U • SH 3027 Domino 105Y ET

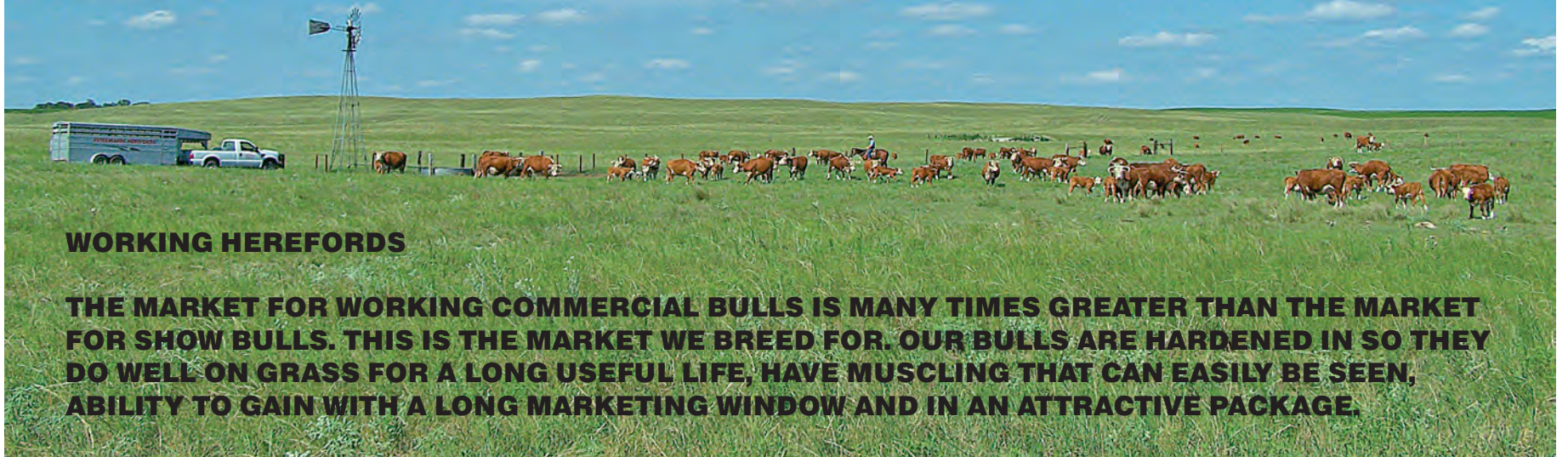
Mary Strang • Tom & Lisa Walsh • 2969 RBC 8, Meeker, CO 81641  
(800) 351-5362, Mary's Cell (970) 270-4445 • (970)878-5362 • Tom's Cell (970) 270-9599  
[strangherefords@gmail.com](mailto:strangherefords@gmail.com) • [strangherefords.com](http://strangherefords.com)





# ESTERMANN HEREFORDS

## WORKING RANCH HEREFORDS



### WORKING HEREFORDS

**THE MARKET FOR WORKING COMMERCIAL BULLS IS MANY TIMES GREATER THAN THE MARKET FOR SHOW BULLS. THIS IS THE MARKET WE BREED FOR. OUR BULLS ARE HARDENED IN SO THEY DO WELL ON GRASS FOR A LONG USEFUL LIFE, HAVE MUSCLING THAT CAN EASILY BE SEEN, ABILITY TO GAIN WITH A LONG MARKETING WINDOW AND IN AN ATTRACTIVE PACKAGE.**



JO WINDY ELTORO 5



AGA 114L GENERAL WHOPPER 32W



JO WINDY DELIGHT 1



JO WINDY STYLE 12

## ESTERMANN HEREFORDS

Joe, Marlene & Dan

35219 S Somerset Rd. Wellfleet, Nebraska 69170

[jestermann@nebnet.net](mailto:jestermann@nebnet.net)

308-963-4473 home, 308-340-4159 cell

20 miles south of North Platte on Hwy 83 and 5 miles west on Hwy 23

1899



**Ehlke....***(continued from page 1)*

Much of the breeding in the initial Bayers purchase had come from Anchor, and Mark was very pleased with all of the good females in the herd of that particular breeding, that were doing such a good job. Ehlkes later would buy an entire polled heifer group from Anchor.

Mark and Della's next search took them into Canada to Harvie Herefords. Mark was very interested in the Harvie program because of the volume and quality of the cattle, and Ehlkes proceeded to buy several bulls and females from that herd that would have a big influence on their cattle in the next few years. The Ehlke herd has now grown to approximately 350 registered purebred Hereford females.

The Ehlke herd sires now include two bulls recently purchased in partnership from Dimitri Mataragas of Iron Lake Ranch, ILR Hometown 332A ET, and ILR H Miles

4140B ET, and also includes, E 4 L Schatzee ET AZ 712, Harvie SAF-NBFI Collateral 337U, E Braxton 719, E U806 Victor X84, E MC 7W Solid Z833, Harvie Dan Sniper203Z, UPS Sensation 2504 (AI), plus other selected AI sires. Mark said he felt the herd bull power that he has added to the herd will enhance the quality in the entire current herd, add carcass qualities and add to the EPD profile. Mark was asked what his goals were

when he started with the herd in 1996, and he answered that his goal was to produce good marketable cattle, be fault free, and work in the en-



*Hard-Working Family — Kason Fitzpatrick (left), Lacey, Jane'a, Della and Mark Ehlke.*

vironment that they were put into. I asked Mark what goals have changed in 2016, as the herd has grown since 1996, and he said he would generally have the same goals, but, "I would continue to work on udder quality and carcass characteristics, as you always need to improve your product."

Ehlke said he would like to retain all the young females and sort them for phenotypical characteristics, and keep the genetic background carefully monitored, and continue to improve performance.

Ehlkes market their bull crop by

private treaty at the ranch, but the few top females that they have sold, have been sold in conjunction with Mohican, and McMurry, at sales in Laurel, Montana. Ehlke's have now sold cattle in six of those sales and they feel like they have raised the bar for their recognition, as they have now sold cattle into 30 states and Canada, since the start of the herd. Many of the top selling females in the above mentioned sales have been Ehlke products, one female selling for \$10,000 and one for \$14,500.

*(continued on page 8)*

*(continued from page 4)*

of weddings planned in the near future. History and times have changed in the 144 year old barn, being totally, and beautifully renovated, it will now take its place in the future to gala gatherings and hopefully, blissful weddings, how-

ever history and memories will linger!

— BB

For more information about the barn renovations click, The Round Barn at Twin Bridges/Facebook.

**Wolff**  
**Cattle**  
**Company**



ANL Gloworm 1615 WCC Donor Dam  
Selling full sib embryo's to our high-selling female in last year's sale sired by TH 89T 755T Stockman 475Z



TH 89T 755T Stockman 475Z  
Selling Daughters and Embryo's!

**4th Annual**  
**Wolff Cattle Company**  
**Open House & Fall Female Sale**  
**Sunday, September 11th Bid off at 5:00 pm CDT**  
**Leonard, ND**  
**And Friends: Friesz Livestock ♦ JMF Herefords**



Herd Sire TH Lombard  
His Daughters Sell!



Friesz heifer 2nd in class at JNHE  
Half Sibs will sell Sept. 11th



She sells!

Tank 45P Granddaughter Sells!

**Steve Wolff**

**Friesz Livestock**

Joana Friesz  
701-400-8744  
[www.frieszlivestock.com](http://www.frieszlivestock.com)

701-710-1574

Email: [swolff318@yahoo.com](mailto:swolff318@yahoo.com)  
[www.wolffcattlecompany.com](http://www.wolffcattlecompany.com)  
Find us on Facebook!

**JMF Herefords**

Jared and Makayla Flower  
320-413-0483 or 605-690-6050  
[www.jmfherefords.com](http://www.jmfherefords.com)

**Open Heifers ♦ Bred Heifers ♦ Bred Cows**



# Modest Birth ♦ Massive Meat

For sale privately: 4 junior sires ♦ 90 bull calves ♦ 60 bred females



**F York 547 York x 3027**

BW 80. YR 117. Pigment, performance, carcass.  
Service sire on many heifers. Possession for sale.



**F Hometown 544 10Y x 5216**

BW 88. YR 105. Deep, wide, smooth. For sale.  
See his beautiful mother at [www.feddes.com](http://www.feddes.com).



**F Ms Rest Easy 503 Rest Easy x Trust 100W**

BW 68. YR 106. Fabulous female backed by powerhouse maternal genetics.  
Bred May 12 to F York 547.



**F Ms X51 Revolution 544 X51 x Harland**

BW 78. YR 110. Super performance and look.  
Bred May 12 to F York 547.



**F Ms Hometown 578**

Bred May 2 to F York 547.



**F 5216 Dominette 142**

Bred May 12 to F Manhattan 446.



**F 105Y Dominette 403**

Bred May 25 to CL 1 Domino 032X.  
Calf 618 by 215Z is a sample of the kind  
of calves raised by our sale cows.

## Feddes Herefords

Tim 406.570.4771  
[tfeddes@msn.com](mailto:tfeddes@msn.com)  
Marvin

Dan 406.570.1602  
2009 Churchill Road  
Manhattan, MT 59741

Our sale is any time you want. All our cattle sell privately.  
See many cattle for sale plus their sires and mothers at:

**[www.feddes.com](http://www.feddes.com)**



# HEREFORD BRED HEIFERS RWF BRED HEIFERS FOR SALE

*Private Treaty After Sept. 1*

*Call for Details*

**MELCHER'S HEREFORDS INC.**

Don 402-336-7194

Page, NE

Kevin 402-340-6189



Yearling bulls, a few horned and mostly polled, are in the Ehlke offering.

## HEREFORDS

accountable • predictable • profitable • sustainable

### 2016 Nebraska Association Tour September 10-11, 2016

#### Breeders Featured on the Tour

#### SATURDAY

Linton Polled Herefords - Miller

Zero Hereford Ranch - Miller

Kucera's Beaver Creek Ranch - Litchfield

CHB Talk - Trey Befort

Cain Land & Livestock - Broken Bow

Estergard Ranch - Callaway

Ridder Hereford Ranch - Callaway

Barn Dance @ Ridder's

#### SUNDAY - Judging Contest

TK Cattle Company - Burwell

Nelson Herefords - Burwell

Greg Brown - Burwell

Morgan Ranch Inc. - Burwell

Boothill Herefords - Burwell

Diamond Ring Ranch - Taylor

Upstream Ranch - Taylor

**Sunday's stops include a judging contest for all ages! High Point Youth Judge wins:**

**\*\*\*A 2015 fall born Registered Hereford Heifer\*\*\***

**Donated by Nelson Herefords & Boothill Herefords**

**Other prizes will be awarded for top individuals in each division**

#### Hotel Headquarters:

Cobblestone Inn - Broken Bow, NE

Be sure to ask for NE Hereford Block

Friday & Saturday nights, \$83.00/room

For reservations call: 308-767-2060

To receive block rates, must book rooms  
by August 9, 2016

#### Van transportation:

Will be available for both days of the tour

Cost is \$40.00 per person for two days

To reserve a spot on the van visit:

[www.nebraskaherefords.com](http://www.nebraskaherefords.com)

or call Melissa

**To view the final schedule, meal stops and tour booklet, please visit the Tour Page on the website, or request a hard copy by mail.**

Nebraska Hereford Association Secretary/Manager:

**Melissa McGee Buehler - 1519 F Street - Fairbury, NE 68352 - 402-239-9712**

**[mismcgee@hotmail.com](mailto:mismcgee@hotmail.com) or [www.nebraskaherefords.com](http://www.nebraskaherefords.com)**

#### Ehlke... (continued from page 6)

Many good relationships and cattle network relationships have been made at these sales.

The Ehlke bulls are sold privately at the ranch, are pen fed and all receive the same ration, they are then semen tested and ultrasounded each year before they are offered for sale. The bulls are performance tested and Mark's goal is to average about 3 pounds a day gain, on the entire bull crop.

Videos of all of the bulls are published on their web site and are available to any potential purchaser that requests them. Now, 60-70% of the bulls are sold from the video production and approximately 20% of the purchases are call-in orders to Mark, and he selects for them. Bulls are delivered with a full acceptance guarantee. I asked Mark how many bulls were not accepted upon delivery, and Mark replied at this time, none have been rejected. Ehlkes furnish, with the bulls, a full one year breeding season guarantee.

I asked Mark about his personal feelings about being a good successful Hereford breeder and he said he felt like there were five points that he felt very strongly about, 1. Integrity and honesty in what you do, 2. Stewardship of the land, 3. Good animal husbandry, 4. Truthful reporting of all TPR and performance data on the cattle, 5. Honesty with yourself, in either what you report on your cattle and your cattle records, and your honest description of your cattle to others.

(continued on page 10)



Ted, Mark and Lucy Ehlke.





WLB Winchester Powerball 27A sells with international semen inventory  
As well as two years of progeny.

# WLB LIVESTOCK

*Bill & Nancy Biglieni*

## COMPLETE DISPERSAL

1:00 CDT at the farm Douglas, Manitoba, Canada

**October 20, 2016**

**Selling 140 head** including herd bulls, cows,  
bred heifers, heifer calves, bull calves, international semen & embryos

Safe to Mr Canada 15B



WLB 9001B  
Lego's two-year old sister  
and her Mr Hereford 11X heifer calf



WLB Mr Canada 10Z 15B sells  
Along with his dam, his sister, and his first offspring



**Almost a 25% discount on your purchase**

At press time the US/Canada exchange rate gives US buyers a 24% discount  
when buying in Canada with US dollars. Exchange rate at sale time will apply.

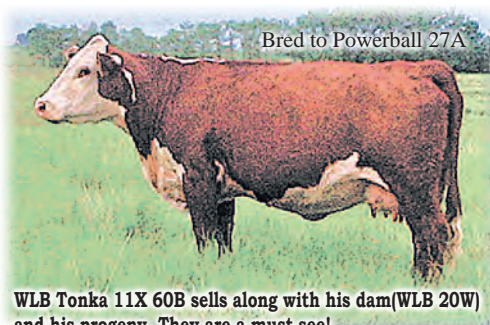
Stacked generations of WLB breeding just waiting to be outcrossed!

**www.wblivestock.com**



Safe to Tonka 60B

WLB 57B - Lego two-year-old sells with her Tonka bull calf



Bred to Powerball 27A

WLB Tonka 11X 60B sells along with his dam(WLB 20W)  
and his progeny. They are a must see!



Safe to Tonka 60B

WLB 1501Z - WLB Global daughter and maternal sister  
to WLB Mr Canada 15B. Sells with her Tonka heifer calf

**204 729 7925**

**wblivestock@gmail.com**

**204 763 4697**



Safe to Mr Canada 15B

WLB 34Y - WLB Quaker 10H 21T daughter  
Sells with her Powerball heifer calf



Safe to Tonka 60B

WLB 8405B - Lego two year old and maternal sister to  
Power ball. Sells with her Mr Hereford bull calf



Safe to Mr Canada 15B

WLB 31A  
Same cow family as 2012 World Hereford Conference  
Gr Champion Female And 1st Miss World Hereford Champion  
Sells with both her Powerball heifer calves.

LiveAuctions.tv

**The WLB cowherd is yours for the picking on October 20!**

We will be happy to assist with all export documents needed for U.S. purchases





**Ehlke....** (continued from page 8)

Ehlkes are a busy involved family. The Ehlkes have two adult daughters, Lacey and Jane'a.



Mark and Della Ehlke have worked hard to build their herd and continue planning for the future.

Lacey is a graduate of Montana State University in Political Science. She is currently President of the Young Montana Stock Growers Association Board, she has been the

secretary of the Montana Hereford Association and has been a Montana delegate to the AHA annual meeting. Lacey showed 3 Champion 4-H steers at the Broadwater County Fair



Ehlkes have been able to make substantial improvements to their genetics and have increased the size of their operation several times over through retention of quality replacements, the infusion of outside genetics, through the focused use of AI and ET, some strategic purchases, and the addition of owned and leased grass. Pictured is their lower place.

## Remitall-W SWEET DEAL ET 12D

Born Jan. 16, 2016

EPDs	
CED	-3.8
BW	6.2
WW	55.5
YW	94.9
MM	19.4
TM	47.2



VIEW THE VIDEO OF "SWEET DEAL"  
AT [WWW.REMITALLWEST.COM](http://WWW.REMITALLWEST.COM)

### NEW GENETICS IN A POWERFUL PACKAGE!

The 2016 Remitall West Production Sale is fast approaching. Leading off this year's sale is Remitall W Sweet Deal ET 12D, one of the most dynamic and exciting herd sire prospects we've ever produced. His muscling, stoutness and eye appeal are simply incredible! Looking for a new line of genetics to add to your program? "Sweet Deal" has it! His sensational sire Waterloo 12B is a total outcross to any North American bloodlines. The dam of Sweet Deal 12D was the 2011 Canadian Jr. National and 2011 Canadian Western National Champion female and is a prolific donor female at Remitall West. Sweet Deal 12D is a great one, check out his video and see for yourself why we are so excited about the future of this next herd sire! If you are interested in being a part of Sweet Deal's future contact us at Remitall West for more information. This year's Remitall West Production Sale will feature our top 2016 born herd sire prospects, ET heifer calves, bred heifers and select embryos. Catalogs will be available on request or can be viewed at [remitallwest.com](http://remitallwest.com)



**Remitall W GD Waterloo ET 12B**, sire of Remitall-W Sweet Deal ET 12D. This exciting total outcross sire has really left his mark on his first calf crop. A great looking bull packed full of muscle, strength of bone, pigmentation and soundness. 2015 Olds Fall Classic Grand Champion Bull and 2015 Canadian Agribition Reserve Jr. Champion.



**Dorbay Miss Whitney 411W**, dam of Remitall-W Sweet Deal ET 12D. This powerhouse donor female was the 2011 Canadian Jr. National and 2011 Canadian Western National Grand Champion Female.

For more information or to request a sale catalog please visit: [www.remitallwest.com](http://www.remitallwest.com)

THE REMITALL WEST  
PRODUCTION SALE  
SATURDAY,  
OCT. 8, 2016

**Remitall  
west**

Bryan & Annette Latimer & Family  
Box 16 Site 2 RR#4  
Olds, Alberta Canada T4H 1T8  
(403)-556-0301 [ablatimer@explornet.ca](mailto:ablatimer@explornet.ca)

in her 4-H days, (a basic crossbred show) and was an active participant in the Montana Jr. Hereford Association, and Lacey was the Showman Champion at that event several times. Lacey served one year in Washington D.C. as an assistant to Rep. Denny Reberg and later served on his staff in Montana for about a year. Lacey is also a video editor for The Livestock Link.

Daughter, Jane'a was very active in 4-H, showing a champion Hereford steer 4 different times at the county fair, she went on to graduate at Montana State University with a degree in Animal Science Reproduction, and as part of her education she went to Russia for 6 months to finish her reproduction education. Jane'a has been very active in the Hereford circles as a videographer working for The Livestock Link. Jane'a was Reserve Sr. Showman at the World Hereford Conference Show in Canada where she also showed a class winner in the same event. In 2015, Jane'a married Kason Fitzpatrick. Kason is now on the Ehlke ranch with full participation in the ranch operations. Kason was previously Herdsman at Churchill Cattle Company and is considered one of the best in the breed at that occupation.

Della Ehlke has been extremely active in the cattle and ranch operation since its inception. Not only has she given a tremendous amount of time and energy to the ranch operation, she has also been very active in other state and national organizations. Della was President of the Montana Hereford Association for five years, she was Montana delegate to the AHA annual meeting 6 times, and she has been Chairman of the Montana Stock Growers Association Seed Stock Committee for 5 years. Della has served on the MSGA Endowment Foundation board and was one of the founders, and has served for 8 years on the Steer Sale Committee that has promoted very successful CHB steer sales at Three Forks, Montana. In asking Della about her thoughts on her ranching career as a purebred stock grower and mother of

(continued on page 14)



Lacey and Mark discussing haying operations.



# Join Us

September 24, 2016

## Traditions of the Cove

Sale hosted at Deana Jak Farms



**DJF BELLE 67B ET** (P43524895)



**DJF Scarlet Letter 76A** (43462267)



**DJF Jessie J 40B ET** (43518415)  
Full Sibling Sells



**JB Remetee 213** (P43056323)  
Progeny Sells



**DJF Miss Wonder 83A** (P43460424)



FARM ADDRESS:  
337 GUYER CORNER RD.  
NEW ENTERPRISE, PA 16664  
(814)-766-2893  
SALE LOCATION

DOUG AND JENNY HOWE, OWNERS  
DHOWE@DEANAJAKFARMS.COM  
AUSTIN & ANDRE HOWE- MANAGERS  
WWW.DEANAJAKFARMS.COM

CORPORATE ADDRESS:  
P.O. BOX 304  
WAGONTOWN, PA 19376  
(610)-942-4249  
(610)-942-4288 FAX

*Committed to our industry's strongest asset- the children*





**Grand Champion Horned Female, 2016 Junior National Hereford Expo**  
Shown by Chesney Efling, South Dakota



**Grand Champion Polled Female, 2016 Junior National Hereford Expo**  
Shown by Carlisle Braman, Texas



**Reserve Horned National Champion Female, 2016 NWSS**  
Shown by Chesney Efling, South Dakota



**Reserve Champion Junior Female, 2015 American Royal**  
Shown by Kennedy Efling, South Dakota



**Grand Champion Horned Female, 2015 National Western Stock Show**  
Shown by Kris Fawcett, South Dakota



**Division Horned Champion, 2015 National Western Stock Show**  
Shown by Will Feking, Minnesota

www.fawcettselmcreekranch.com

Online Fall Female Sale AVAILABLE ONLY ON



Dustin Layton 405-464-2455  
www.smartauctions.co  
BE MOBILE. BID MOBILE. BID SMART.  
Bid from your smart phone, computer or tablet! To view, register and bid.

News Flash!



ECR Who Maker 210 ET  
2 Time National Champion Bull, 2014  
Watch for full sisters selling in the female sale!  
ALSO... a full brother selling this fall!

**FAWCETT'S  
ELM CREEK RANCH**

**Keith Fawcett & Family**  
605-870-0161 • 605-943-5664

**Robert Fawcett**

**Daniel Fawcett & Family**  
605-870-6172

please contact Daniel with any questions





# the LOEWEN LEGACY

MONDAY, SEPTEMBER 12, 2016

At the Ranch near Waukomis, Oklahoma

10:00 a.m. CDT

80 years of dedication to breeding outstanding Hereford cattle!



## THE COMPLETE DISPERSION OF THE JOHN & MONA LOEWEN HERD

featuring the influence of **HVH OKSANA 4L 33N**



33N sells as Lot 1, plus...

- ★ 9 direct daughters
- ★ 6 herd bull sons & sire prospects
- ★ Pregnancies & embryo packages
- ★ Her dam, HVH Genetic Queen 53H 4L
- ★ Maternal sisters
- ★ Many granddaughters & grandsons



### C&L LOEWEN REVA X51 20A

P43405267 ★ 3/22/13 ★ Young Donor  
KCF Bennett Revolution X51 x HVH Oksana 4L 33N  
She sells plus progeny, pregnancies and embryos. Her March heifer calf sired by Loewen 33T 19W also sells.  
CED 5.3, BW 1.4, WW 63, YW 102, MILK 22, M&G 53, REA 1.01, MRB .29



### LOEWEN MISS 4L 52X ET

P43089021 ★ 1/18/10 ★ Spring Calver  
Loewen M326 Sir 33T x HVH Genetic Queen 53H 4L  
Maternal sister to Oksana 33N! Sells safe to Gerber Anodyne 001A. Her heifer calf sired by 20Z also sells.  
CED 3.0, BW 3.4, WW 58, YW 91, MILK 21, M&G 50, REA .61, MRB .12



### LOEWEN 33N RED LADY B57 ET

P43592609 ★ 10/26/14 ★ Homoz. Polled Bred Heifer  
Churchill Red Bull 200Z x HVH Oksana 4L 33N  
Full sister to the \$250,000-valued Churchill Kickstart.  
Sells safe to calve this fall to Gerber Anodyne 001A.  
CED 5.3, BW 1.5, WW 61, YW 101, MILK 29, M&G 59, REA .68, MRB .19



### LOEWEN MISS TRUST 33N B55 ET

P43565919 ★ 10/12/14 ★ Bred Heifer  
NJW 73S M326 Trust 100W ET x HVH Oksana 4L 33N  
Checked safe to calve in the fall to the \$60,000 R Leader 6964.  
CED 1.6, BW 2.6, WW 60, YW 102, MILK 28, M&G 58, REA 1.00, MRB .16



### LOEWEN GLENGROVE MISS 19W 27C

P43567181 ★ 2/18/15 ★ Bred Heifer  
Loewen 33T 19W x Glengrove 100W Daisy Z4  
Checked safe to calve spring 2017 to Loewen Z210 33N B58 ET. He also sells.  
CED 4.0, BW -0.3, WW 42, YW 72, MILK 22, M&G 43, REA .66, MRB .05



### LOEWEN MISS 19W 43Z 21C

P43566781 ★ 1/20/15 ★ Homoz. Polled Bred Heifer  
Loewen 33T 19W x Loewen Miss 34X 1063 43Z  
Checked safe to calve spring 2017 to SHF Access Y90 A216.  
CED 6.4, BW -1.6, WW 43, YW 72, MILK 14, M&G 35, REA .28, MRB .25



### LOEWEN77 48 344N MISS A37ET

P43367331 ★ 3/11/13 ★ Young Donor  
MSU TCF Revolution 4R x PCR Jacklyn Nikole 344N  
Dam of the high selling bull in the 2016 Hereford Heritage Sale. Due in January to Hyalite On Target 936. Embryos, two full sisters and her January bull sired calf by GK Genetic Explosion also sell.  
CED 4.3, BW 2.5, WW 59, YW 101, MILK 21, M&G 50, REA .69, MRB .16



### JWR M41 PRINCESS 167S

P42757211 ★ Proven Donor  
PW Victor Boomer P606 x HHH K570 H132 M41  
Feature lot in the Grandview/CMR dispersal with daughters, pregnancies and embryos selling. Two fall open heifers sired by Encore, two spring open heifers and her direct daughter sired by 19W all sell. Sells open to flush.  
CED -1.0, BW 3.5, WW 41, YW 60, MILK 32, M&G 53, REA .31, MRB .18



### LOEWEN MISS ON TARGET 10Y 1A

P43353140 ★ 1/3/13 ★ Fall Bred Donor  
Hyalite On Target 936 x Loewen C&L Miss 33T 10Y ET  
Seven daughters sell, including six ET full sisters... plus her pregnancies and embryos. Checked safe to calve in September to NJW 33TB 100W Trust 167Y.  
CED 1.4, BW 3.0, WW 66, YW 99, MILK 23, M&G 56, REA .44, MRB .22



### 4B LOEWEN CLASSY 459 ET

P43491222 ★ 1/31/14 ★ Spring First-calf Heifer  
Loewen Uptown 33N 50U ET x SHF Boomer P606 R17 ET  
Direct daughter of the R17 donor that originated in the Sandhill Farms program. R17 has produced several dollar-generating sons and daughters. Due in January to R Leader 6964. 459's Dec. bull calf by Anodyne also sells.  
CED 3.0, BW 2.1, WW 44, YW 64, MILK 29, M&G 51, REA .42, MRB .18

FOR AIR SERVICE:

OKLAHOMA CITY IS A  
1 HOUR, 30 MINUTE DRIVE;  
TULSA, OK, AND WICHITA, KS,  
ARE BOTH 2 HOUR DRIVES.

EVERY FEMALE IN THE LOEWEN HERD SELLS MONDAY, SEPTEMBER 12TH!

184 live lots...plus 97 embryos, 23 pregnancies & 180 units of semen

INTERESTED BUYERS ARE  
WELCOME TO VIEW THE  
CATTLE AT THE RANCH  
ANYTIME PRIOR TO SALE DAY.  
LET US KNOW IF WE CAN BE  
OF ANY ASSISTANCE!

**LOEWEN**  
herefords

John & Mona Loewen ★ 580.231.0683  
Email: john@loewenherefords.com  
9815 South 66th, Waukomis, OK 73773  
www.loewenherefords.com

**LAYTON**  
AUCTION SERVICES, LLC

Dustin N. Layton ★ 405.464.2455  
laytond@yahoo.com  
www.laytonauction.com

LiveAuctionsTV

SEE OUR CATALOG WITH THE AUGUST ISSUE OF  
HEREFORD WORLD, OR CALL TO REQUEST YOUR COPY.



# Minnesota Hereford Breeder's Fall Tour

## Tour stops will include:

- Neil Farms
  - Neilyne Genetics
  - Doug Lind
- GVF Herefords
- Dose Family Herefords
- Jones Farms



## Tour Speakers will include:

- Millborn Seeds
- NRCS - John Zinn, State Grazing Specialist

Come see what Herefords have to offer. Join us for a full day tour, noon meal, and speakers on **September 24, 2016** starting at 8 AM at Neil Farms 27536 Chippendale Ave, Northfield MN. Please RSVP by September 10, 2016 to 507-964-2138 or [allandose@frontiernet.net](mailto:allandose@frontiernet.net).

**HEREFORDS. Accountable. Predictable. Profitable. Sustainable.**

(continued from page 10)

two daughters, Della had this to say, "We spent 10 hard, lean years getting started in the ranching business and the purebred business, but most important, it was a blessing for our lives, and I am so proud of our daughters, Lacey and Jane'a, and I give thanks for the environment in which they were raised and grew up to be what they are—our agriculture life is so important that is it a shame more people in other pursuits of life do not know about our kind of life or understand it. I feel fortunate to have lived this life!"



New herd bull, ILR H Miles 4140B, purchased from Iron Lake Ranch in the Denver sale, brings new genetics to the Ehlke herd. He is a polled son of C Miles McKee 2103, owned with Iron Lake Ranch, Hoffman Ranch and Lucky U Ranch.

bred registered Hereford cows, that will be programmed to calve in both the spring and fall groups. Further marketing plans for the Ehlkes will include some possible video and/or auction video sales with both the bull and heifer crops.

The future in the Hereford cattle industry for the Ehlke operation, seems to be well planned and defined, and successful!

## Obituaries



### Roger Imig

Roger Imig, 81, of Lakeside, NE, passed away March 5, 2016.

Roger was born in Seward, NE to Elmer and Helen Imig on September 1, 1934. He grew up on a Seward County farm and he and his sister, Shirley Imig Sloup, drove a pony and cart to country school. He was active in 4-H and FFA, becoming a State Star Farmer. In 1948 his 4-H steer was the champion steer at the Nebraska State Fair. Roger used his proceeds from that steer to buy his first two registered Hereford heifers that was the beginning of Imig Herefords. He graduated from Seward High School in 1952.

Roger married Judy (Munn) Imig on November 12, 1954. Their three goals were to raise a nice family, have their own ranch and a good herd of Hereford cattle.

In Seward County, Roger raised row crops and Hereford cattle. He was active in the community and served on several boards. In 1967 the Federal Land Bank awarded the Young Farmer medal to Roger.

In 1968, the Imigs and their young family moved to Cherry County and leased a ranch south of Valentine, NE where their children went to country school and were active in 4-H and the Nebraska Junior Hereford Association. Imig Herefords first bull sales were held at the ranch.

In the 1970s Roger was a two-term

Director of the Nebraska Hereford Association.

Hardy Brothers of Thedford, NE leased their ranch to the Imig family 1973. The cow herd expanded and the bull sales at the ranch continued. In 1982 the Imigs were named the Sunday Lincoln Journal and Star Honor Farm Family.

In 1984, Imigs brought the Arapaho Ranch north of Lakeside, NE and moved into the very welcoming community where Roger and Judy and son Mike ranched for 30 years until Roger's health declined.

Imig Herefords exported registered Hereford cattle to Kazakhstan, Australia and Argentina. With the help of many, many neighbors, friends and family, a total of 60 production sales of registered bulls and females were held by the Imigs.

Roger is survived by his wife of 61 years, Judy Munn Imig, his children, Janyce Imig West (Tess Southard), Mike Imig (Vicki Hoecher), Mary Imig (Robert Schweitzer) and Julie Imig (George Shopp); his grandchildren, Clare Schweitzer, Jack Schweitzer, Ellen Imig Arkfeld, Grace Imig Arkfeld, Margaret Imig, Madison Imig, Emily Southard, Trystin Gielissen and Zane Gielissen; his sister, Shirley Sloup; his sisters-in-law, Janis (Don) Davis, Eddie Ranson; brother-in-law, John (Linda) Munn and numerous nieces and nephews.

Roger was preceded in death by his eldest daughter, Jean Imig Olsen, daughter-in-law, Darcy Stephens Imig, his brother-in-law, Eugene Sloup and his parents, Elmer and Helen Kauffman Imig.

Memorials may be sent to the Heart of the Hills Volunteer Fire Department, Lakeside, NE 69351

# MONTANA

HEREFORD ASSOCIATION

## FALL TOUR

September 23-24

Come see scenic BIG SKY Country in early fall and get a chance to tour some of the finest Hereford operations in the U.S.

### TOUR PARTICIPANTS AND STOPS:

Bar Star Cattle Co.	Feddes Herefords	Thomas Herefords
Cooper Herefords	Holden Herefords	Tomlinson Herefords
Churchill Cattle Co.	K&C Herefords	Anchor Polled Herefords
Dutton Herefords	Rafter Herefords	L-W Cattle Co.
Ehlke Herefords	Storey Hereford Ranch	Lucky U Cattle Co.

#### Host Hotel:

Holiday Inn Express & Suites  
Belgrade, MT 59714 • 406-388-7100

Special Room Rate \$138 plus tax • Please mention code "Association"  
Room Block ends August 22nd  
Airport Shuttle to hotel

Registration form available at  
[www.montanahereford.org](http://www.montanahereford.org)

Please sign up early to confirm  
space on bus transportation.

For more information visit [www.montanahereford.org](http://www.montanahereford.org)  
or email [jtholden@3rivers.net](mailto:jtholden@3rivers.net) or [bruce@thomasherefords.com](mailto:bruce@thomasherefords.com)



# A Premier Sale of Hereford Cattle

## MOHICAN WEST & GUESTS

### MCMURRY CATTLE & EHLKE HEREFORDS

**THURSDAY, SEPTEMBER 22, 2016 • NOON**

**65 LOTS SELL**

All animals tested free of genetic defects.  
All cattle in sale have a DNA profile.

**Laurel, MT**

View Videos Online at [www.MohicanPolledHerefords.com](http://www.MohicanPolledHerefords.com)



**E 190Z MISS BELL C063 43592088**  
BW 6.1 WW 52 YW 97 M 24 M&G 50  
Calved: 2/24/15 • Sire: NJW 78P TWENTYTWELVE 190Z ET



**MOHICAN TOP SHELF 11D P43690610**  
BW 2.1 WW 53 YW 83 M 30 M&G 56  
Calved: 2/5/16 • Sire: MOHICAN TOP SHELF Z1



**MOHICAN UNFORGETTABLE 427C ET 43588398**  
BW 2.9 WW 50 YW 87 M 29 M&G 54  
Calved: 2/24/15 • Sire: TH 113W 11X HI-TECH 17A



**E ILR 1319 MARIA 266C ET P43603670**  
BW 3.2 WW 42 YW 64 M 27 M&G 48  
Calved: 2/27/15 • Sire: C 19D NOTICE ME 1319 ET



**MOHICAN GLORIA Z66 P43293154**  
BW 3.2 WW 37 YW 64 M 21 M&G 39  
Calved: 3/4/12 • Sire: MOHICAN XTREME 2X



**TDP HEIDI Z72 P43293109**  
BW 5.5 WW 52 YW 87 M 25 M&G 51  
Calved: 3/9/12 • Sire: MOHICAN XTREME 2X



**LJE Z712 GRACE 6D 43689843**  
BW 5.6 WW 55 YW 84 M 25 M&G 53  
Calved: 2/12/16 • Sire: E 4L SCHATZEE ET Z712



**MC 1415 6Y FEDERAL 1601 43716781**  
BW 1.7 WW 58 YW 88 M 23 M&G 52  
Calved: 1/20/16 • Sire: C&L CT FEDERAL 485T 6Y



**MC 1127 110A MS MATERNAL 1619 P43711270**  
BW 0.5 WW 50 YW 79 M 25 M&G 49  
Calved: 1/29/16 • Sire: NJW 51U 156T BRICK 110A



**E 109Y FANCY D36 P43714942**  
BW 2.3 WW 54 YW 82 M 23 M&G 50  
Calved: 2/10/16 • Sire: CRR 719 CATAPULT 109



**MC 1419 6Y MS FEDERAL 1626 43716790**  
BW 2.7 WW 58 YW 89 M 26 M&G 54  
Calved: 2/2/16 • Sire: C&L CT FEDERAL 485T 6Y



**MOHICAN BRICK M13B 43514423**  
BW 3.2 WW 62 YW 94 M 22 M&G 53  
Calved: 2/23/14 • Sire: BOYD POWERHOUSE 202S

**DALE STITH**  
Auctioneer  
5239 Old Sardis Pike  
Mays Lick, KY 41055  
cell 918-760-1550  
Website: [www.dalestith.com](http://www.dalestith.com)

**idwest Cattle Service, Inc.**  
Jim & Linda Reed P.O. Box 126  
Green Ridge, Mo 65332  
660-527-3507 ~ fax 660-527-3379  
Cell 417-860-3102  
reedent@iland.net  
[www.reedent.com](http://www.reedent.com)

Videos also online at  
[www.EhlkeHerefords.com](http://www.EhlkeHerefords.com) and  
[www.McMurryCattle.com](http://www.McMurryCattle.com)



Mark and Della Ehlke  
(406) 266-4121 • Mark: (406) 439-4311  
Della: (406) 439-4300 • [www.ehlkeherefords.com](http://www.ehlkeherefords.com)

Fred and Doreen McMurry  
(406) 254-1247 or at the ranch: (406) 348-2303  
[www.mcmurrycattle.com](http://www.mcmurrycattle.com)

**MW Mohican West**  
3100 Sportsman Park Rd.  
Laurel, MT 59044  
Conard & Nancy Stitzlein, owners  
Terry Powlesland, Mgr.  
Cell: (406) 670-8529  
Fax: (406) 633-2600  
E-mail: [mohicanw@yahoo.com](mailto:mohicanw@yahoo.com)  
[www.MohicanPolledHerefords.com](http://www.MohicanPolledHerefords.com)

**LiveAuctions TV**



# Obituaries



## Janet Ruth Brooks

Janet Ruth Brooks, 88, passed away Sunday, March 27, 2016 at Good Samaritan Society-Valley Vista, in Wamego, KS. She had been a resident of Wamego since she and her husband Loren moved from Hardin, MT in 2011 to be closer to their family.

She was born in Glenburn, ND, on October 28, 1927, the daughter of William E. and Laura (Erickson) Phillips. She attended schools there and upon graduating from Minot State Teacher's College moved to Sidney, MT where she taught elementary school. She was united in marriage to James "Loren" Brooks on April 10, 1948 in Minot,

ND. Together with Loren, they owned and operated their family's ranch first at Lansford, ND and then in Big Horn County, MT where they moved in 1976. She was proclaimed by many as "the best cook in Big Horn County," and the ranch hands looked forward to her arrival with bountiful and delicious meals each day.

Janet was a 4-H leader for several years and a very active member of her church. She was a member of the Glenburn Baptist Church, serving as youth leader for several years as well as on state church boards, a past member of Church of the Open Bible in Hardin, MT, and was a founding member of Gateway Christian Church of Hardin. She was also a Charter Member of the American Hereford Auxiliary, and a member of the North Dakota & Montana Hereford Auxiliaries.

Her survivors include: her husband, Loren, of Wamego, KS; a daughter, Vickie Bishop Kern (Bill) of Wamego; one sister, Doris Nelson, Minot, ND;

three granddaughters: Jodi Jordan (Toby) of Rensselaer, IN; Tami Weaver (Bob) of Wamego; Kristi Bishop of Stillwater, OK; and seven great-grandchildren.

Memorials are suggested to the Gateway Christian Center of Hardin, and may be left in care of Stewart Funeral Home, P.O. Box 48, Wamego, KS 66547.

## Louise Korb

Louise Korb, 91, of Burr Oak, KS passed away April 4, 2016. She was born Friday, June 13, 1924, on family homestead land in the Burr Oak area. Louise attended high school in Burr Oak where she played first chair trumpet in the band and turned cartwheels as a cheerleader.

After high school Louise worked for a year at the courthouse in Mankato before marrying Boyd Korb on March 1, 1942. His forebears also homesteaded in the Burr Oak area. To their union

three children were born: Sandy, Bing and Heather. Louise liked being outside, both with her father and then with her husband. She and Boyd were wheat farmers with his-and-her, 4-wheel drive Versatile tractors. They also showed registered horned Hereford cattle at major shows around the country winning numerous trophies.

Louise maintained a life-time interest in the cattle operation. Louise attended the Burr Oak Christian Church her entire life and spent a number of years teaching Sunday school. When Louise would climb down from the Versatile she would begin the myriad of other activities she participated in. She sponsored 4-H and church projects. She was also a professional seamstress much sought after due to her creativity. Louise was highly energetic and had countless interests including re-inventing and re-designing projects of all types. She was talented as a designer and art-

(continued on page 18)

## A Few of Our WALKING BULLS

*Selling progeny of and females bred to these top herd sires*



**ILR HOMETOWN 332A ET**  
P43385499 | DOB: 3/7/2013

Powerfully constructed 10Y son with depth and length of spine. 332A has good pigment and is structurally sound while posting an outstanding EPD profile. His first crop of calves have far exceeded our expectations. Co-owned with Iron Lake Ranch.



**E 4L SCHATZEE ET Z712**  
P43306080 | DOB: 2/27/2012

Z712 is a 3/4 brother to Harvie Raftsman 16R. The addition of P606 to Schatzee's pedigree, adds substantially to the strength of his maternal background. He is heavily pigmented and moves out freely. Z712's dam is one of the best P606 daughters out there. The homework has been done on this bull.

**MOHICAN WEST & GUESTS  
PRODUCTION SALE  
SEPTEMBER 22  
LAUREL, MT**

**Need to make some changes?  
Consider our program  
for your outcross needs.**



**ILR H MILES 4140B ET**  
P43583927 | DOB: 12/18/2014

4140 is a polled son of C MILES MCKEE 2103 ET and the Iron Lake Ranch donor BOYD E70 QUEEN 0118, a Revolution daughter with a superb udder. 4140 is an impressive individual. He is deep sided, very well muscled, sound on his feet and is highly pigmented. He posts an outstanding EPD profile as well. We are anticipating great things from 4140's first progeny. Owned with Iron Lake Ranch, Hoffman Ranch and Lucky U Cattle.

*Visit us at the* **MONTANA HEREFORD TOUR  
SEPTEMBER 23 & 24**

*Call or email for a catalog!*





# Private Treaty

**WE HAVE SOME OF OUR  
BEST 2015 SPRING AND FALL  
BULLS FOR SALE!**



*Calving Ease with Style!*

## CL 1 DOMINO 314A

43379692 — Calved: Jan. 5, 2013

Sire: CL 1 DOMINO 105Y — Dam: CL1 DOMINETTE 1116Y

• 314 sires beautiful, low birth weight, short marked, pigmented calves that are born extremely easy and then just get up and grow. His calves were a feature in Berry's 2015 sale and will dominate the top end of their 2016 sale. A commercial producer that used 100 straws on heifers in 2014 recently purchased 150 straws. The true test!

• Owned with The Berrys, Wyo., Cooper Hereford Ranch, Mont. and K7 Herefords, Iowa

BW	WW	YW	M	M&G	UDR	TEAT	SC	CW	FAT	REA	MRB
0.2	46	74	44	67	1.14	1.19	1.2	60	.043	-.03	.09

**AVAILABLE IN OCTOBER FOR THE  
1ST TIME WE WILL BE OFFERING  
10-15 OF OUR VERY TOP HEIFER  
CALVES BY PRIVATE TREATY!**



*0145X is a proven multi-trait leader!*

## CL 1 DOMINO 0145X 1ET

43082486 — Calved: Jan. 31, 2010

Sire: CL 1 DOMINO 860U — Dam: CL 1 DOMINETTE 440P 1ET

• 0145X is a true performance bull that sires outstanding bulls and super females. His daughters are deep bodied, easy fleshing and have beautiful udders. Now in his sixth spring breeding season Cline reports he is completely sound and very athletic.

• Owned with Vernie and Shiloh Doebling, Noack Herefords, Texas, Stan Cline, Colo., ET Herefords, Mo. and Blaser Hereford Farms, Ill.

BW	WW	YW	M	M&G	UDR	TEAT	SC	CW	FAT	REA	MRB
5.6	73	120	32	69	1.46	1.50	1.4	86	.093	.32	.02



*The Future!*

## CL1 DOMINO 589C

43575976 — Calved: Jan. 14, 2015

Sire: GB L1 DOMINO 177R — Dam: CL1 DOMINETTE 1116Y

• Auctioneer Joe Goggins said it best, "Here is the rancher's bull."

• Great feet and legs. Beautiful to watch on the move. He has grow written all over him. His picture and numbers say the rest.

• Along with 314A, we now own two sons of the 1116Y cow.

• Owned with The Berrys, Wyo. and Cooper Hereford Ranch, Mont.

BW	WW	YW	M	M&G	UDR	TEAT	SC	CW	FAT	REA	MRB
3.1	58	83	30	59	1.17	1.21	1.1	68	-.001	.00	.36

CT

# THE LOWELL FISHER FAMILY

CT

*Semen for Sale*

48979 Nordic Rd., Spencer, NE 68777

*Est. 1943*

Lowell and Carol  
402-589-1347  
402-340-6084 cell

Steven and Dalene  
Fisher  
918-440-4848

Nathan Gillaspie,  
Herdsman  
816-401-9677



(continued from page 16)

ist. Louise was a unique individual and will be missed by all who knew her.

### Roger Mensch

Roger Mensch, age 70 of Menno passed away unexpectedly Saturday, April 9, 2016 from injuries due to an accident.

Roger was born on July 25, 1945 to LaVerne and Hulda (Kirschenman) Mensch in Scotland, SD. He attended and graduated from Menno Public School. He served in the United States Navy from November 1, 1965 to October 11, 1969 as a Quarter Master aboard the USS HALSEY DLG CG 23, serving three tours in the Vietnam War. On August 9, 1968, he was united in marriage to Judy S. Holm in San Diego, CA. Roger and Judy with their daughter, Angela moved back to Menno, SD. They had three more children: Vickie, Connie and Curtis. He farmed and raised registered Hereford cattle. Roger was active in 4-H and mentored numerous fami-

lies and his pride and joy was showing Hereford cattle with his children and grandchildren.

He was a very active member with the American Legion and was a commander of Post #152 for several years. Roger was elected to represent the State of South Dakota in Washington, D.C. for the Vietnam Wall War Memorial. He had a large passion for the Fourth of July parades and was known for his floats and was the coordinator of the Menno Fourth of July parade for 45 years. Roger had a love for football and was a huge Arizona Cardinal fan. He also had a passion for NASCAR and enjoyed the races in Kansas City.

He leaves behind his mother Hulda (Kirschenman) Mensch of Menno, SD; daughters, Angela Ackerman of St. Joseph, MO, Vickie Mensch-Geuther of Wakonda, SD, and Connie Derousseau (fiancé, Tom Spielmann) of Sioux Falls, SD; a son, Curtis Mensch (Karla) of Ft. Campbell, KY; 10 grandchil-

dren; 4 great grandchildren and his significant other, Donna Langerock of Menno, SD.

His father LaVerne Mensch and his sister, Judy VonEye precede him in death.

On-line condolences may be sent to [www.opsahl-kostelfuneralhome.com](http://www.opsahl-kostelfuneralhome.com).

### Ruth Margaret Irvine

Ruth Irvine died Friday, May 20, at the Platte County Legacy Home in Wheatland, WY.

Ruth was born Monday, Dec. 24, 1917 in Wheatland, WY, the daughter of James Eli and Clara Elizabeth (Grant) Chase.

Throughout her youth, Ruth worked with her parents on the ranch northwest of Chugwater. When she was about four years old, Ruth's folks moved to North Reshaw Creek, (spelling later changed to Richeau) on her mother's Desert Claim. She remembered seeing the house, barn and garage cut in sections, laid flat on wagons to transport, and then pieced back together upon arrival at the new place.

As a young girl, Ruth's first tasks were wrangling the milk cow at night and horses in the morning.

During the summer, she ran the dump rake and drove the stacker team on the old overshot stacker. Buck, Rowdy, and Chipmunk were here favorite horses in her youth, and she rode one of them to check cattle every week.

As a child, Ruth, her folks and her aunt and uncle took a big trip to Scobey, MT, to see her sister Marie Dickinson's home and new baby boy. They circled around through eastern North Dakota and South Dakota and down to Iowa where they went to a live music show that they had always enjoyed hearing on the radio. The roads for much of the trip were just muddy trails.

Ruth's Uncle Art Chase taught her to chord on the organ, to accompany his fiddle music. She then took about 50 piano lessons from her Aunt May Grant, and also played by ear much of the time. She enjoyed a good tune and entertained herself and others playing the piano at home, at local dances and Slater Sunday School most of her adult life. While she loved playing, she'd "rather have been dancing," and did that many times, too.

At a neighborhood dance, she met James E. Irvine from Slate Creek. Jim and Ruth were married July 9, 1941, and left that very day for California where Jim had a job building Army barracks. Ruth missed ranch life and her family and by Thanksgiving, the couple was back in Wyoming where they remained.

The young couple moved several times in the early years. While they were on the Guthrie place on the Sybille, Glen Alan was born. Eventually they purchased and settled on a ranch just north of Ruth's home place. Daughter Sharon Carol soon arrived, and joined in the ranch work.

Jim and Ruth added to the place over the years, operating a successful ranch all of their lives. Glen joined the enterprise, and after his passing, his sons Duncan and Jason stepped in, and eventually took the reins.

Ruth was a hardworking ranch woman through and through. She would rather be riding or helping work cattle than in the house. Many times she said that she didn't like to cook, but that if she was going to do it, she might as well do it well. She was known throughout the community for her delicious meals and potluck dishes.

Until the last few years, Ruth kept accurate records on the ranch cows, meticulously noting data for each cow, the calf's weaning weight, and other details. She also kept the ranch's financial books in good order.

Animals were special to Ruth and besides her horses, she loved her cats and dogs and took special care of them. She also had a green thumb and was known for her beautiful houseplants and outdoor flowers.

Ruth carried on her mother's tradition of creating scrapbooks. She saved clippings including regional and family history, cartoons and other interesting tidbits, making 16 scrapbooks over the years. She also made a picture book from magazine and catalog clippings for each of her grandchildren and great-grandchildren.

Ruth enjoyed family history and made a point of keeping in touch with a number of relatives from across the country. She remembered her childhood in great detail and enjoyed sharing those stories with family and friends.

Slater Sunday School and Slater Women's Club were important to Ruth and it was rare for her to miss either. She served as club treasurer for 32 years and was recently recognized for her dedication.

The Laramie Peak Cattlewomen honored Ruth as Ranch Woman of the Year in 1981 and as Pioneer Ranch Woman of the year in 1998.

Ruth is survived by her daughter, Sharon (Lester) Longwood, of Lemmon, SD; daughter-in-law, Mary Irvine, of Wheatland; grandchildren, Duncan (Brady) Irvine, Jason Irvine, Amanda (Neal) Sorenson, Laura (Jared) Lahr, Carrie (Jeremy) Stadheim, and Erin (Luke) Stadheim; and great grandchildren, Curran and Logen Irvine, Shaya and Chase Irvine, Cole and Chance Sorenson, James and Ella Lahr, Pitch, Kyan, Kinley, Stone, Rainn, and Steele Stadheim, and Cora and Liza Stadheim.

Ruth was preceded in death by her father, James, on May 8, 1966; mother, Clara, on March 6, 1961; her husband, James E., on October 27, 2014; son, Glen A. Irvine, on July 30, 1994; and sister, Marie Dickinson.

A memorial to the Slater Women's Club in care of Nancy Collins, 330 Slater Road, Wheatland, WY 82201 or

(continued on page 20)

# WESTERN TRADITIONS


## INTERNET SALE

**New Sale Date!**

### TUES., OCTOBER 25, 2016




## HEIFERS LIKE THESE SELL!



## SHOWSHOE CATTLE COMPANY

Bernie and Stacie Buzanowski  
4365 Custer Frontage Rd.  
Pompeys Pillar, MT 59064  
32 miles east of Billings  
406-875-2138 • 406-855-8288  
[snowshoecattle@msn.com](mailto:snowshoecattle@msn.com) • [snowshoecattle.com](http://snowshoecattle.com)



**Pelton Polled Herefords**  
Craig, Kayla and Kain  
40 93<sup>rd</sup> Ave. N.W.,  
Halliday, ND 58636  
701-548-8243  
Cell 701-260-0058  
[craigp@ndsupernet.com](mailto:craigp@ndsupernet.com)  
[www.herefordbullsforsale.com](http://www.herefordbullsforsale.com)



# Offering Two Extremely Rare Genetic Packages from the Heart of Our Program

*Out of Two of the Best Matings in the Breed*

*at our 3rd Annual Sale*

## SATURDAY, OCTOBER 8, 2016

*12 noon at the ranch, Athens, Texas*

***Rare Offering! Choice of One of Three 2-Year-Old Daughters out of DJB 46B Beth 1L (42211374)***

1L was one of the foundation females of the famed Grandview CMR herd. 1L is a full sister to P606 whose daughters are still sought after today for their outstanding maternal ability and perfect udders, and 1L offers this and more. She passes her perfect pigment to nearly every calf along with her big volume maternal look. We are very fortunate to have this true matriarch of the breed in our Donor Herd.



**4143B**

Sired by *C Miles McKee 2103 ET*.



**4120B**

Sired by *ALH 034 Plato Dom 0424*.  
Two full sisters sold for \$15,000 last year.



**489B**

Sired by *CMR GVP Mr Maternal 156T*.  
Full sister to last year's high selling females 6A which sold to Meade Enterprises for \$40,000 and 6B that sold to Ehlike Herefords for \$42,500.

***These are the last daughters offered!***

***Rare Offering! Choice of One of Three Daughters out of HH Miss Advance 6155S (H42674137) Deceased 3/2016***

One of our important additions to the donor line-up. 6155S is the record setting, Line One Hereford cow purchased from the Spring 2013 Holden Herefords Sale. She is a full sister to Holden's featured herd bull HH Advance 8050U. Her daughters are becoming the cornerstone of our program.



**4139B**

Sired by *H W4 Grizzly 014 ET*.



**4114B**

Sired by *C-S Pure Gold 98170*.



**5239C**

**Straight Line One breeding • Sired by *CL 1 Domino 297Z*.**  
Her full brother was the lead bull in the Division Champion Pen of Bulls, World Hereford Conference Show in Uruguay.

***This opportunity will not be offered again.***

## Pick of the Females

***— Terms will be announced on Sale Day —***



For more information contact:  
Dimitri Mataragas 214-649-0071 cell  
David Caraway 903-802-3373 cell  
P.O. Box 751 • 8027 F.M. 1616, Athens, TX 75751

**[www.ironlakeranch.com](http://www.ironlakeranch.com)**



Dustin N. Layton  
405-464-2455  
laytond@yahoo.com  
laytonauction.com

**SCHACHER**  
AUCTION SERVICES

Robert Schacher  
817-219-0102  
rob@schacherauction.com  
P.O. Box 33804  
Fort Worth, Texas 76162



(continued from page 18)

the Platte County Legacy Home, 100 19th Street, Wheatland, WY 82201 would be appreciated by the family.

Condolences may be sent to the family at [www.gormanfh.com](http://www.gormanfh.com)

### Anton "Tony" Kralicek

Anton Joseph was born February 23, 1926 to Joseph and Mary (Dvorak) Kralicek, in Dickinson, ND. Tony grew up on the family farm north of Dickinson where he attended country school. After school he continued to work on the farm and it was during this time that he met Bertha Ficek. Tony and Bertha were married on June 18, 1947, at St. Patrick's Catholic Church. After marriage, they farmed with his parents in Stark County for two years. They then purchased Bertha's Parent's farm in Dunn County where they farmed, ranched, and raised their family. They moved to Dickinson in 2006. Tony loved his horned Hereford cattle. He enjoyed competing at the Midland Bull Test and Sale, where he won champion pen of Hereford Bulls in 1992. He enjoyed all sports and livestock events that his children and grandchildren participated in. He also enjoyed fishing, camping and attending Stockmen's Livestock sales. He was also a lifetime member of St. Patrick's Catholic Church. Tony's true enjoyments in life were family and cattle. He will be dearly missed.

He was a lifetime member of St. Pat-

rick's Catholic Church, North Dakota Stockmen's Association, American Hereford Association, North Dakota Hereford Association, which he was chosen Hereford Man of the year in 1999. He was also a Golden Eagle of the Dickinson Eagles Club.

Tony is survived by his wife, Bertha; daughter, Buddine (Harlan) Bullinger of Dickinson; son, Curtis A. (Brenda) Kralicek of Manning; grandchildren, Jeremy (Jessica) Bullinger; Cade (Kristina) Kralicek; Jared (Bridget) Bullinger; Jenna (Storm) Sammon; Tyler (Chelsey) Kralicek; and 11 great-grandchildren; brother, Joe (Josie) Kralicek, Dickinson; sisters, Lillian Moore, Dorothy Kostecky both of Oregon; brother-in-law, Laurie Kostecky, Dickinson; sister-in-law Blanche Kovash, Dickinson.

He is preceded in death by his parents, Joseph and Mary; infant brothers, Albert and George; sisters, Edith V. Kostecky, Hattie (Anton) Kostecky, Martha (Melvin) Watkins; Emily Ficek, Rose Kralicek, Anne (Val) Schmidt. brothers-in-law, Edmond Kostecky and Jerry Moore.

### Robert (Bob) Henry Gordon

Robert (Bob) Henry Gordon, beloved husband, father and grandfather passed away peacefully July 29, 2016, in Boissevain, Manitoba, Canada. Bob was born November 13, 1932, in Oak Lake, Manitoba to the late Henry and Ella (Ronberg) Gordon.

Bob is survived by his loving wife of 56 years, Joyce of Boissevain; his children Lois (Blair) McRae of Brandon, MB; Shirley Kaufman (BC Derrow) of Mt. Sydney, VA; Sheila (Kevin) Jensen of Courtland, KS; B. Lynn Gordon of Brookings, SD; Bruce (Kindra) Gordon of Whitewood, SD; and 10 loving grandchildren Brett and Melissa McRae, Cole Kaufman, Brady, Brooke and Ben Jensen, Bridger, Danika, Matea, and Bennett Gordon; one brother Wayne (Eleanor) Gordon and sister Cheryl (Don) Brown both of Souris, MB

Growing up in the '30s, Bob loved the country lifestyle and farm life and at an early age he had a dream of becoming a registered livestock breeder. His interest in 4-H started as a young boy and continued throughout his lifetime. He exhibited his first steer at the Brandon Winter Fair in 1946 and sold him for \$0.16/lb. Bob's determination to show steers resulted in him riding in the rail box car 1,500 miles to the Toronto Royal Show in Ontario to exhibit steers.

Bob's family moved to Souris, MB in 1955 to the Hume farm which became their homestead. He married Joyce (Honeyman) of Hayfield, MB in 1959. In 1961, his family was in the dairy business shipping milk for 10 years. Then Bob and his brother Wayne formed Kinnaber Cattle Co., establishing their Shorthorn operation. Bob took a risk purchasing a large framed white

Shorthorn bull "TPS Coronet Leader 21st", who generated a new era in the Shorthorn Breed. Bob was named "Builder of the Shorthorn Breed" in 1970, an honor he always cherished. He was instrumental in forming the Canadian Shorthorn Lassie Organization and served as director and president of the Manitoba Shorthorn Club. The Shorthorn days were exciting times for Bob, leading the Gordon's to become regular suppliers of Shorthorn bulls to large American ranches. One of Bob's proudest accomplishments was breeding and exhibiting the Grand Champion Female at the prestigious National Western Stock Show, Denver, CO, (1969, 1970, 1971), along with Reserve Champion Female (1970, 1971), plus showing champions at Chicago International Livestock Show in 1968 and 1969. Bob was honored to judge many livestock shows including the Canadian Western Agribition, Toronto Royal, many 4-H achievement days and U.S. state fairs.

After traveling to the Midland Test Station, Billings, MT in 1968, Bob saw the first half-blood bull and anticipated the need for Simmental cattle in Canada. In 1969, Bar-5 Simmentals, Brandon, MB, was formed with Bob as the first president. Bar-5 Simmentals seedstock became sought after across North America. At this time, Bob initiated the importation of Simmental cattle from Europe. Achilles Cattle Co., a marketing group was formed and Bob was

## HANDEL MARKETING, LLC

Art Handel • 605/391-8233  
handelhereford@aol.com Rapid City, SD 57701  
www.arthandelsattle.com Licensed & Bonded



### 2500 Bred Heifers

75% AI Bred

Selected for QUALITY & DISPOSITION  
Hereford, Red Angus, RWF, BWF, Black

### 2000 OPEN Heifers

including 70 HEREFORDS ready for FALL BREEDING

### ALL FROM REPUTATION COW HERDS

### REGISTERED HEREFORD FEMALES

Have several Groups of Bred  
& Open Females available



WHATEVER YOUR NEEDS BUYING or SELLING  
Call 605/391-8233



## SEE YOU AT THE FALL SALES



UPS DOMINO 3027

KJ HVH 33N REDEEM 485T ET

## Complete Spring Herd Dispersal!

This is an excellent opportunity to buy from one of the country's most proven programs with an extensive A.I. program in use for decades to the most highly proven bulls in the breed. For management reasons we are moving to an all fall calving herd. We will be selling all the 2012, 2013 and 2014 model cows. All cows sold will be A.I. confirmed safe to the breed leading calving ease sire R Leader 6964 for a March calving date. Also, all 2015 replacement heifers will sell bred to Churchill Sensation 028X.

Included in the offering are daughters of 3027, 719T, Revolution and Redeem.

Please contact us or check our website for updates as they become available.  
Or contact these reps who have seen the cattle: Marc Hotchkiss, Hereford America/  
The Livestock Link - 605/490-1513; Art Handel, Handel Marketing - 605/391-8233;  
Levi Landers, AHA - 308/730-1396.

VIDEOS OF COWS WILL BE ON OUR WEBSITE:  
[WWW.OLLERICHBROTHERSHEREFORDS.COM](http://WWW.OLLERICHBROTHERSHEREFORDS.COM)



29188 303 Ave. • Clearfield, SD 57580  
605-557-3246

Jerome's cell: 605-842-5212

James' cell: 605-359-4006

[www.ollerichbrothersherefords.com](http://www.ollerichbrothersherefords.com)





hired as manager to promote and sell Simmental semen all over the world.

In the '70s, the Hereford herd was established when his children's love for showing cattle developed and together as a family they logged many miles showing at junior and Hereford shows across Canada. Bob strongly believed in youth and during his role as director on the Canadian Hereford Association Board, he initiated the formation of the Canadian Junior Hereford Association (CJHA) and hosted the inaugural CJHA event at Kinnaber on August 12, 1979. Kinnaber Cattle Co., became well-known for breeding top Hereford cattle and the family enjoyed many years in the Hereford breed, but dispersed the herd in 1983 as the children started their college education.

Bob was intrigued by the Angus breed and developed a small herd he enjoyed. Then with his astute cattle knowledge of all breeds, Bob was named "Sire Selector and Manager of the Beef Program for Western Breeders and Alta Genetics, Balzac, AB," in 1985. Together, Bob and Joyce travelled Canada, the U.S., and Europe extensively seeking breed leading herd-sires in the beef industry that were right for the times. Through their travels they developed lifelong friendships in the cattle business.

November 12, 1995, Bob was inducted into the Canadian Agriculture Hall of Fame and in 2007; Bob and Joyce together were inducted into the Manitoba Agricultural Hall of Fame for their contribution to agriculture and the beef industry.

Bob demonstrated a lifelong commitment to advancement of agriculture and served as role model for others. He served on many boards and associations, such as the Manitoba Cattle Producers Association, which initiated the Douglas Bull Test Station, where his foresight and involvement along with his fellow cattlemen helped to move the cattle industry forward.

For years, many cattlemen encouraged Bob to write about his cattle knowledge. In 2003 Bob and Joyce wrote, "A Cattleman's Walk Down Memory Lane," chronicling their life-long experiences in farming and the livestock industry.

Bob and Joyce retired to Boissevain in 2008.

Bob was preceded in death by his parents, mother-and-father-in law Rosella and Findlay Honeyman and brother-in-law, Keith Honeyman.

In memory of Bob, donations may be made to Bob Gordon Memorial Fund with proceeds going to youth and agriculture endeavors, Box 605 Boissevain, Manitoba R0K 0E0 or U.S. address: Bob Gordon Memorial Fund, Box 197, Courtland, KS 66939.



Bob Gordon

### Mildred Meeks

Mildred Meeks age 98 of Burwell, NE formerly of Taylor, NE, died Monday August 8, 2016 at the Burwell Community Health Center in Burwell.

Mildred was born on July 8, 1918 at Stratford, TX to Arthur and Grace (Miller) Brown. She was married to Alfred Meeks in 1934. Mr. Meeks died in 1991.

She was preceded in death by her parents, her husband Alfred, a son and daughter in law Ferrall and Gloria Meeks, her brother Harold Brown

and a sister Dora Clark.

Mildred is survived by her son Warren and wife Johnnie Meeks of Burwell, four grandchildren, eleven great grandchildren and 6 great great grandchildren.

Memorials are suggested to the Calvary Methodist Church in Taylor or the Taylor Library.

www.govierbrothers.com



## 55th ANNUAL BULL SALE • OCTOBER 6, 2016 Selling 140 Hereford Bulls • Lunch at 11:00 • Sale at Noon



Box 10 • Comanche, Texas 76442  
John: 325-356-3767 • 325-642-0745 - Mobile  
Tom: 325-356-3918 • 325-642-0748 - Mobile  
Office: 325-356-2284 • Fax: 325-356-3185

Email: john@dudleybros.com • www.dudleybros.com

DUDLEY BROS

REGISTERED  
HEREFORDS



# Nebraska, Montana and Minnesota Hereford Tours Offer Great Hereford Lineups, Scenery

## Nebraska Hereford Tour

### Great cattle...great people...great fun..

Make plans now to be in Central Nebraska September 10-11th. You'll enjoy the 2016 Hereford tour as it winds through the scenic rolling Sandhills of central Nebraska. Love spending time looking through great cattle? This tour showcases 13 different breeders and a presentation by Certified Hereford Beef. It's your chance to leisurely walk through cow/calf pairs, herd sires and sale bulls. You'll enjoy the deep bodied, thick, heavy muscled Herefords with their quiet dispositions and see firsthand why cross breeding with Herefords is in such high demand.

#### Tour Schedule:

##### Saturday, September 10, 2016

Bus leaves hotel headquarters in Broken Bow at 9:00 AM CST  
Cobblestone Inn & Suites - For reservations call: 308-767-2060

All Stops are on Central Standard Time

##### Saturday, September 10, 2016

**10:00 - 11:00 AM – Mid Morning Stop:** Linton Polled Herefords - Miller

Zero Hereford Ranch - Miller  
Kucera's Beaver Creek Ranch -

**11:30 1:00 PM – Lunch Stop:**

Litchfield

**2:00 PM – Afternoon Stop:**

CHB Talk - Trey Befort - Broken Bow

**3:30 PM – Pasture Stop:**

Cain Land & Livestock - Broken Bow

**4:30 PM – Pasture Stop:**

Estergard Ranch - Callaway

**5:30 - 7:30 PM - Evening Meal Stop:**

Ridder Hereford Ranch - Callaway

Barn Dance with South Loup Sunrise Band at Ridder's

##### Sunday, September 11, 2016

**7:00 AM**

Bus Leaves hotel in Broken Bow

**8:00 - 10:00 AM – Breakfast Stop:**

TK Cattle Co - Burwell

Judging Contest Begins

Nelson Herefords - Burwell

**10:30 AM – Mid Morning Stop:**

Taylor Rodeo Arena - Taylor

Judging Contest Continues

Boothill Herefords - Burwell

Greg Brown Family - Burwell

Morgan Ranch Inc. - Burwell

#### 12:30 PM - Lunch

Results of the Judging Contest

Diamond Ring Ranch - Taylor  
Upstream Ranch - Taylor  
Taylor Community Building

The tour is headquartered in Broken Bow, NE. You can sign up to ride the van, or drive individually to any or all the stops.

For additional information, or to register for the tour: [www.nebraskaherefords.com](http://www.nebraskaherefords.com) or email [mismcgee@hotmail.com](mailto:mismcgee@hotmail.com) or text or call 402-239-9712.

(See ad on page 8.)

## Minnesota Hereford Tour September 24

The Minnesota Hereford Tour is a one-day event starting at 8 a.m. at Neil Farms, 27536 Chippendale Ave., Northfield MN, with displays by Neilyne Genetics and Lind Farms.

The group will also visit GVF Herefords, Dose Family Herefords, and Jones Farms.

Neil Farms is owned and operated by Steve, Keely, Jackson, and Hannah. Steve grew up with Hereford cattle and exhibited Herefords at state and national junior shows. Today the cowherd consists of 80 cows. GVF Herefords, Dan and Karen Koester and Family, is set in a golden valley and continues to be a family-run operation. Dan, Karen, Audra and Barbara work together on a cattle management system that carefully selects for structural correctness, disposition, and strong maternal characteristics. Dose Family Herefords is a third generation family farm that is a diversified operation raising crops and cattle. Registered Herefords were added in 2010, consisting of 60 cows. Jones Farms is in their 38th year in the Hereford business. Their program is focused on cattle that have the growth and performance we all appreciate, without compromising on structure, udder quality, and maternal traits.

Additional tour speakers at noon include a representative from Millborn Seeds and John Zinn, State Grazing Specialist with NRCS.

Please RSVP by September 10 to 507-964-2138 or [allandose@frontiernet.net](mailto:allandose@frontiernet.net)

(continued on page 26)

## C & T CATTLE CO. & GUESTS TAKE THE NEXT STEP SALE

**SATURDAY, OCTOBER 15, 2016 ~ 5:00 P.M.**

(Following the ANL & Guests Sale)

RIGHT CROSS RANCH SALE FACILITY ~ **KISBEY, Saskatchewan**

**On Offer: 55 Head Sell**



**C&T Z81 Dara 75C**

Mohican Stroker Z81 x Star Bright Future 533P  
BW: 4.3 WW: 47.9 YW: 82.8 Milk: 19.5 TM: 43.5  
Bred to PCL Zircon 719T 25Z



**C&T 106A Nessa 26C**

MHPH 521X Action 106A x HF 4L Beyond 36N  
BW: 4.8 WW: 55.1 YW: 90.1 Milk: 21 TM: 48.6  
Bred to Mohican Stroker Z81



**C&T 310W Sharona 35C**

MHPH 102S Wyatt 301W x RSK 33L Sharona 12S  
BW: 5.8 WW: 54.2 YW: 95.9 Milk: 18.4 TM: 45.5  
Bred to C&T 106A Big Bang 5C

### C & T CATTLE CO.

Chris & Tina Lees  
Box 243, Arcola SK, S0C 0G0  
Phone: 306.455.2605 • C: 306.577.7370 • T: 306.577.1238  
[ctcattleco@sasktel.net](mailto:ctcattleco@sasktel.net)  
Kurt & Cassandra: 306.421.8318  
Tom Lees

### Phantom Creek Livestock

Doug & Wanda Mann  
Box 1256, Swift Current, SK S9H 3X4  
H: 306-773-7136 • C: 306-741-1265  
[w\\_mann@xplomet.ca](mailto:w_mann@xplomet.ca)



### McCoys Cattle Co.

Chad & Carrie Nicholas  
Box 479, Milestone, SK S0G 3L0  
Gary & Florence - 306-436-4301  
Chad & Carrie - 306-436-2086  
[cnicholas@mccoycattle.com](mailto:cnicholas@mccoycattle.com) • [www.mccoycattle.com](http://www.mccoycattle.com)

### Twin View Polled Herefords

Ernie & Marge McDonald • Ken & Janelle Gulka  
Box 238, Strathclair, MB, R0J 2C0  
Phone: 204.759.2188 • Fax: 204.365.2592  
Cell: 204.365.7426

### SALE MANAGEMENT:

T Bar C Cattle Co. Ltd.  
P: 306-933-4200  
[info@tbarc.com](mailto:info@tbarc.com)

### US REPRESENTATIVES:

Marc Hotchkiss: 605-490-1513  
Levi Landers: 308-730-1396

### KLR Ranch

Randy & Karen Wagner  
Box 122, Consul, SK S0N 0P0  
Randy: 306.299.4511  
Karen: 306.717.1230

View the catalogue online at [www.buyagro.com](http://www.buyagro.com)

Watch and bid online at

**DVAuction**  
Broadcasting Real-Time Auctions



These **PROVEN DONORS** sell  
in their entirety September 10th!

Like us on Facebook!  
[www.facebook.com/delaneyherefords](http://www.facebook.com/delaneyherefords)  
[www.facebook.com/atkinsherefords](http://www.facebook.com/atkinsherefords)



**JDH MS 26U CRACKER JACK 9Y ET**



**KBCR P606 MS DOM 618**



**JDH AH MS 1B VICTOR 107D ET**



**ROUDY JDH MS 0705 CRACKER JACK**



**AH LADY ZELDA 616D**



**JDH AH MS 1B VICTOR 100D ET**



**JDH MS 20R VICTOR 33Z 50D ET**



**JDH MS 11B DIMAGGIO 2094 2D**

# GENETIC OPPORTUNITY *Sale IV*

**9.10.16**

**Sale @ 1:00P.M.**

**Jim Birdwell, Auctioneer**

**Delaney Herefords Sale Barn, Lake Benton, MN**

Offering approximately 60 lots of our freshest female genetics including donor cows, calves, bred heifers, pairs & select embryo packages. Featuring daughters of 33Z, DiMaggio and more!

Pictures and videos of the entire offering  
available at [www.delaneyherefords.com](http://www.delaneyherefords.com).

## Delaney HEREFORDS

Jerry & Shelly Delaney Family • Lake Benton, Minnesota  
H: 507.368.9284 • Jerry: 507.820.0661 • Marty: 507.820.0483 • Mike: 507.820.0493  
[jdh@delaneyherefords.com](mailto:jdh@delaneyherefords.com)

## ATKINS HEREFORDS

Pete & Laura Atkins Family • Tea, South Dakota  
Pete: 605.351.9847  
[atkins15@sio.midco.net](mailto:atkins15@sio.midco.net)

Sale details and more available at:

[www.delaneyherefords.com](http://www.delaneyherefords.com)

Watch & Bid online at:  
**LiveAuctionsTV**





### Churchill Lady 6297D ET

BW 3.7 WW 62 YW 105 MM 31 REA .81 MARB .26  
Simply incredible! Wildcat out of an Outcross cow.



### Churchill Lady 6137D

BW -0.7 WW 51 YW 82 MM 35 REA .50 MARB .41  
Beautiful straight horned heifer out of Mark Domino and a Sensation two year old!



### Churchill Lady 625D

BW 2.2 WW 59 YW 97 MM 28 REA .66 MARB .10  
One of 7 heifer calves by Churchill Stud. They are special!



### Churchill Lady 650D

BW 3.1 WW 51 YW 86 MM 27 REA .34 MARB .26  
Straight horned powerhouse out of Churchill Bravo and a CL 1 Domino 0130 donor!



### Churchill Lady 685D

BW 6.6 WW 59 YW 100 MM 22 REA .69 MARB .18  
Gorgeous Full Throttle out of an Outcross cow that also sells.



### Churchill Lady 6246D ET

BW 2.9 WW 48 YW 75 MM 26 REA .58 MARB .08  
Terrific C Stockman heifer that is a maternal sister to the super cow, 002X!



### Churchill Lady 6292D ET

BW 3.1 WW 57 YW 97 MM 23 REA .68 MARB -.03  
Very classy Times A Wastin heifer out of the undefeated National Champion 51W.

## Catalogs on Request.

**We pay half the  
delivery cost to  
central points on  
registered cattle.**

**CCC**  
**CHURCHILL CATTLE**  
**CO.**

Dale and Nancy Venhuizen  
1862 Yadon Road  
Manhattan, MT 59741

406-284-6421 (office and home)  
406-284-3715 (fax)  
406-580-6421 (cell)

E-mail: [dale@churchillcattle.com](mailto:dale@churchillcattle.com)

[www.churchillcattle.com](http://www.churchillcattle.com)





### Churchill Lady 195Y

BW 5.2 WW 60 YW 103 MM 25 REA .84 MARB .12  
5 breed leading donors sell! This great Outcross donor is bred to Wildcat!

Churchill's

# World Class Female Sale

## Friday, September 16, 2016

1:00 PM - At the ranch - Manhattan, Montana

*Selling a powerful set of heifer calves, bred heifers, donors and ET flushes!*



### Churchill Lady 5131C ET

BW 4.3 WW 64 YW 107 MM 33 REA .61 MARB .27  
Tremendous power and quality with a straight horned pedigree! Bakken x Yankee.



### Churchill Lady 592C

BW 2.3 WW 51 YW 75 MM 30 REA .08 MARB .29  
Ideal 88X heifer bred to Churchill Kickstart!



### C Lady Christine 4161

BW 3.2 WW 58 YW 84 MM 39 REA .68 MARB .21  
Selling an ET flush out of this great Miles McKee two-year-old that topped the Colyer sale last year!



### Churchill Lady 510C

BW 0.0 WW 56 YW 81 MM 38 REA .46 MARB .26  
Top Sensation heifer out of 955 cow — bred to HH Advance 5044C!



### Churchill Lady 522C

BW -1.4 WW 49 YW 69 MM 38 REA .36 MARB .19  
Powerful Sensation heifer out of a 0130X cow bred to 5044C!



### Churchill Lady 515C

BW 2.3 WW 67 YW 107 MM 33 REA .58 MARB .22  
Super donor prospect out of Red Bull - bred to SHF York!



### Churchill Grand Lady 4300B ET

BW 2.2 WW 59 YW 92 MM 20 REA .56 MARB .03  
Big time Catapult daughter bred to York!



### Churchill Lady 542C

BW 1.7 WW 61 YW 93 MM 26 REA .62 MARB .20  
Ideal Perfect Timing heifer out of an Outcross cow!



### Churchill Lady 5276C

BW 2.1 WW 61 YW 104 MM 32 REA .83 MARB .06  
Very good CL 1 Domino 0130X heifer out of the super cow, 002X!

## Selling 100 Churchill Ladies on September 16.



(continued from page 22)

## Montana Hereford Association Tour Slated for September 23rd and 24th

The Montana Hereford Association Fall Tour is scheduled for September 23rd and 24th.

Tour headquarters will be in Belgrade, MT, and the 2 day tour will showcase many of Montana's top Hereford operations.

Friday stops include Storey Herefords, Feddes Herefords, Churchill Cattle Co. and Cooper Herefords.

Saturday stops are at Ehlke Herefords, Grant Kohrs Historical Ranch, and Thomas Herefords with evening entertainment that night. Bus transportation will be available and the full itinerary and registration form is available at [www.montanahereford.org](http://www.montanahereford.org).

Please make your plans now to attend this fun filled event and see some outstanding Hereford cattle.

(See ad on page 14.)

## Burning the Hereford Brand — Bonanza 2016 — Olds, Alberta



**Grand Champion Female** – RVP 51X Ablaze 7A with Harvie RSK MA Autumn 32D at side exhibited by Jacey Massey.



**Grand Champion Bull** – XLP KPH LCPH Tribute ET 707B exhibited by Lexie O'Connor.

## South Dakota Field Day Highlights



**2016 SDJHA Officers** – President, Sydney Dvorak; Vice President, Calah Covey; Secretary and Queen, Haley Ringkob; Treasurer, Alicia Geuther; Reporter, Justin Ringkob and Director, Molly Meyers. Not pictured are Directors Eric Tesch and Halley Becking.



**Grand Champion Heifer** – Nick Delaney, Lake Benton, MN with JDH AH Ms 34X Victor 33Z45C.



**Herdsmen Award** – Abby Repenning received the Jordan Mack Memorial Herdsmen Award.



**Senior Showmanship** – Champion Showman, Abby Repenning and Reserve Showman, Karly Schaunaman.



**Jr. Showmanship** – Champion Showman, Devon Moore and Reserve Showman, Tate Johnson.



**Peewee Showmanship** – Champion Showman, Kenidey Effling and Reserve Showman is Tom Connor.



# Hoffman Ranch Female Sale

September 26, 2016 | Thedford, Nebraska

*Selling 100+ Hereford & Angus*

Show Heifer Prospects || Open Replacements

Bred Heifers || Elite Donors

Flush Opportunities || Pick of 2-Year Olds (Flush)



**Sold in 2014 HR Sale**  
**H BL Miss Spice 405**  
**2015 JNHE Champion Horned Heifer**



**Sold in 2013 HR Sale**  
**H CHEZ TR Chardonnay 303A**  
**2014 JNHE Champion Horned Heifer**



**Sold in 2012 HR Sale**  
**H BR Addison 2018**  
**2013 JNHE Champion Polled Heifer**



**She Sells!**  
**UCC 6160 Kimberly 8001 ET**  
**Reg# 42928565**  
Two daughters grossed \$150,000 in our 2015 sale,  
mother of the 2015 Denver Reserve Grand Champion.



**She Sells!**  
**H CCC SR JB Shealee 2468 ET**  
**Reg# 43296065**  
Full sister to Game Changer out of the Lady Sport  
cow family.



**Flush Opportunity!**  
**H Ms 0103 Mariah 4488 ET**  
**Reg# 43482152**  
We are offering a flush opportunity of the pick of our  
two-year olds.



**The Brand  
of Champions**

**1/5 HOFFMAN**  
**R.A.N.C.H**  
modern, stout, functional

Jason: 530.604.5096 | Denny: 406.425.0859 | Office: 308.645.2279 | [www.HoffmanRanch.com](http://www.HoffmanRanch.com)



ALL AD MATERIALS FOR OCTOBER ISSUE MUST BE IN BY SEPT. 5.

# HEREFORD AMERICA

Registered and Commercial readers in every state PLUS 7 foreign countries!

AD RATES: Sept. 2016-Apr. 2017. Ad rates do not include photos. U.S. FUNDS ONLY.

Size	Black & White	1 Extra Color <sup>1</sup>	4-Color <sup>2</sup>
2-Page Spread	\$1600	\$1750	\$2050
Full Page	\$950	\$1025	\$1200
3/4 Page	\$750	\$825	\$1000
2/3 Page	\$725	\$775	\$950
Junior Page	\$700	\$750	\$850
1/2 Page (Island)	\$700	\$750	\$850
1/2 Page (vertical, 2 or 3 col.)	\$525	\$575	\$675
1/2 Page (horizontal)	\$500	\$550	\$650
1/3 Page	\$400	\$425	\$525
1/4 Page	\$250	\$300	\$350
1/8 Strip Ad <sup>3</sup>	\$200	\$225	\$300
1/8 Page	\$175	\$200	\$275
1/16 Strip Ad <sup>3</sup>	\$150	\$175	\$225
1/16 Page	\$125	\$150	\$200
Card Ad (7 issues)	\$150 per year		
Photos	\$5 each	\$10 each	

<sup>1</sup> 1 Extra Color = black and white photos plus one extra color of your choice (no metallics or fluorescents) in the ad.

<sup>2</sup> 4-Color = color photos and additional color usage in the ad.

<sup>3</sup> Strip ads = run on either top or bottom of page.

Ads placed and later cancelled are subject to full charges.

BACK PAGE AUCTION:

\$1,200 starting bid. \$100 increment bids. Winner is highest bidder on deadline day at 5:00 p.m.

FREQUENCY DISCOUNT:

1/4 page or larger 3 times or more for a 10% discount.

INSERTS:

Based on size and weight of insert. Poly-bagging also available. Please call for information and pricing.

FRONT PAGE STICKY NOTES:

Please call for information and pricing.

PHOTOS:

Unretouched, unsized original high-resolution digital photos. You may email photos. Actual prints (no inkjet prints) are also accepted. 300 dpi or higher if scanning a print. Note: If we receive photos from other publications and are charged, we will pass the charges on to you.

CAMERA READY ADS:

Accepted formats are high-resolution pdf or jpeg with professionally adjusted photos, 300 dpi, 4-color process, fonts embedded. Acceptable native program is InDesign, packaged with all links/fonts. NO PUBLISHER, MICROSOFT WORD OR POWERPOINT FILES WILL BE ACCEPTED. If we have to re-do your ad, in order to achieve optimal printing results, it is not considered camera ready, charges will apply, including photos.

DEADLINES: Aug. 2016-Mar. 2017.

Issue	Deadline
Sept. 2016 <i>Special Emphasis - Fall Sales/Female Sales</i>	Aug. 5
Oct. 2016 <i>Special Emphasis - Fall Sales/Early Consignment Sales</i>	Sept. 5
Nov./Dec. 2016 <i>Special Emphasis - SD Excellence/Cornhusker Classic/North Star/GoPher/Reno</i>	Oct. 5
Jan. 2017 <i>Special Emphasis - Denver/Sioux Empire/Black Hills Stock Show/Watertown</i>	Dec. 5
Feb. 2017 <i>Special Emphasis - Nebraska Cattlemen's Classic/Denver Results/Bull Sales</i>	Jan. 5
Mar. 2017 <i>Special Emphasis - A.I./Bull Sales</i>	Feb. 5
Apr./May 2017 <i>Special Emphasis - Spring Wrapup/Private Treaty Sales/A.I.</i>	Mar. 5

EARLY BIRD DISCOUNT:

Have ALL of your ad materials to us prior to the ad deadline and receive a 10% discount.

LATE ADS:

Add 10% to total. Strict cut-off will be enforced.

AD SIZES:

Full Page (4 col.)	9.5" x 12.75"
3/4 Page (3 col.)	7.09" x 12.75"
2/3 Page (4 col.)	9.5" x 8.3"
2/3 Page (3 col.)	7.09" x 11.22"
Junior Page (3 col.)	7.09" x 10"
1/2 Page (Island)	7.09" x 8.5"
1/2 Page (vertical 2 col.)	4.67" x 12.75"
1/2 Page (vertical 3 col.)	7.09" x 8.5"
1/2 Page (horizontal 4 col.)	9.5" x 6.25"
1/3 Page (4 col.)	9.5" x 4"
1/3 Page (3 col.)	7.09" x 5.5"
1/3 Page (2 col.)	4.67" x 8.375"
1/4 Page (4 col.)	9.5" x 3"
1/4 Page (3 col.)	7.09" x 4.125"
1/4 Page (2 col.)	4.67" x 6.25"
1/4 Page (1 col.)	2.25" x 12.75"
1/8 Strip Ad (4 col.)	9.5" x 1.5"
1/8 Page (3 col.)	7.09" x 2"
1/8 Page (2 col.)	4.67" x 3"
1/8 Page (1 col.)	2.25" x 6"
1/16 Strip Ad (4 col.)	9.5" x .75"
1/16 Page (3 col.)	7.09" x 1"
1/16 Page (2 col.)	4.67" x 1.5"
1/16 Page (1 col.)	2.25" x 3"
Card Ad	2.25" x 1.67"

Finished Size: 10.44" x 13.75". NO BLEED AVAILABLE.

Email ad materials to: [jbh@herefordamerica.com](mailto:jbh@herefordamerica.com)

Largest Privately Owned Hereford Newspaper in North America

# HEREFORD AMERICA

Jill and Marc Hotchkiss • Byron Bayers • Taylor Vroman

605/866-4495

13823 Beaver Creek Place, Reva, SD 57651

Visit us at: [www.herefordamerica.com](http://www.herefordamerica.com)





## Jill's Editorial....

(continued from page 1)

clude breeders within these two states, it didn't leave much room for increasing revenue.

So we discussed combining the South Dakota and Montana publications but decided it made more sense to include other states. We moved forward with the multi-state plan which also included my husband Marc Hotchkiss and my mom, Pauline Bayers as the other business partners. The four of us pursued permission from the South Dakota Hereford Association and Montana Hereford Association to meld their publications into one called *Hereford America*. This was a very stressful, long process but they finally agreed. For me in South Dakota I remember it was like going before a firing squad when we presented our proposal to the SDHA board. I can remember most of the people who were on the board at that time. Of course, we are all good friends now.

We also approached the Wyoming Hereford Association, North Dakota Hereford Association, Minnesota Hereford Association and Nebraska Hereford Association to do the same. At that time, all but one agreed to join forces with our new publication. While the agreements have changed over the years these core states remain supportive and at the forefront of our coverage.

When we started we had no idea how successful the new publication would be. I am very grateful to all of you who have been ardent fans and customers over the past 20 years. We have seen some of the best Hereford cattle in the world and continue to do so.

Each year brings something different. One thing has remained constant, we put on a LOT of miles covering Hereford sales and events.

While we have seen a slow change in type and size of cattle, the biggest changes over the last 20 years are primarily related to technology.

First I will address the change in cattle. Since Marc and I live in South Dakota we are on the edge of what I feel is an area which trends to smaller cattle. In my view, eastern South Dakota and many of the states east of there are seeing a definite trend to smaller framed cattle. My opinion is this has been due in large part to popularity of show cattle and club calves and availability of feed. Western South Dakota, Montana, North Dakota and western Canada still seem to go for slightly larger cattle. Of course there are exceptions and I do expect to hear your comments on this subject. I'm always comparing notes with dad who is in southwestern Montana and the size gap seems to become more obvious each year.

EPDs have changed a great deal. In the past 20-25 years we have seen formulas changed at least three times. It was a good thing when this finally stabilized, making the numbers more

consistent and accurate.

Their use by seedstock breeders has risen to a point where if you aren't using them to your benefit, most registered breeders won't look at your program. I know some of you don't want to hear that! In the last few years selection-by-the-numbers has gained in popularity and risen to an art form or maybe a mathematical art form bringing out the best in the analytical cattle breeder who thrives on mathematical computations. Melding of premier numbers with excellent phenotype is improving our breed quickly.

In the commercial sector, however,

I'm not sure EPDs are used all that much except for those who have commercial, straight-bred, non-registered animals. They follow pedigrees and EPDs and select based on those factors. All they are lacking is the registration. What we have seen in the commercial sector remains about the same: use of actual birthweight and weaning weight and visual appraisal for bull selection. I recently heard a comment that in the seedstock industry weaning weights have continued to climb but in the commercial livestock sector this has not been the case. This is something we will explore in a future issue but raises

the obvious question of "why."

Another big change is the club calf and show cattle sector of the cattle business in general. In some respects this is a world all its own but there are several prominent Hereford breeders who are doing quite well at it while also retaining excellent breeding herds. Seems like a very fine balance to me.

The initial bovine genome analysis was completed and published in 2009. In my opinion this is the biggest development we have seen in the past 20 years in terms of modern-day livestock selection.

(continued on page 30)

# Genetically Yours

The Tradition of Quality Continues

**25<sup>TH</sup>**  
**ANNIVERSARY**  
**SALE**

**SATURDAY, OCT. 1, 2016**

**11 a.m. • Springfield, MO**

*The Largest Polled Hereford offering to sell in Missouri this year.*

**25 SERVICE AGE BULLS**

**12 Herd Bull Calf Prospects • 20 Bred Heifers  
15 Fall Calving Cows • 35 Spring Cow-Heifer Calf Pairs  
5 Spring Cow-Bull Calf Pairs**



**LJR MSU BELLE 48D • P43704672**

A can't miss cow prospect by NJB 3060 Gaucho 829. She sports fantastic EPD's. BW 1.2; WW 47; YW 76; MM 31; M&G 54



**LJR MSU DEW DOMINO 134Y • P43197200**

A beautiful daughter of NJW 98S Durango 44U out of a Dam of Distinction bred to MPH Z3 Box Top C16. Great number spread; BW 1.0 to YW 78. 48D is her daughter pictured above.



**LJR MSU HAZEL 316A • P43383479**

A conservatively marked, red eyed daughter of KJ C&L J119 Logic 023R. A great producing cow as you can see by her heifer calf, 39D. Bred to WSF Home Schooled B76.

See this catalog online at [www.reedent.com](http://www.reedent.com)

Sale Managed by:

**idwest Cattle Service, Inc.**

Jim and Linda Reed • P.O. Box 126  
Green Ridge, MO 65332  
660-527-3507 • Fax 660-527-3379  
[reedent@illand.net](mailto:reedent@illand.net) • [www.reedent.com](http://www.reedent.com)



**LJR MSU WILLA 207Z • P43283582**

An impressive granddaughter of PW Victor Boomer P606, with a beautiful udder. Bred to MPH Z3 Box Top C16. Hard to sell one like this.



**LJR MSU LADYSPORT 39D • P43706605**

A fantastic daughter of the Stuber Ranch sire, SR Right On 2203Z, out of the Logic daughter, 316A. A really stout made female that you will like. Super EPD's; BW 0.3; WW 49; YW 73; MM 28; M&G 52

**LJR JOURNAGAN RANCH**  
**Missouri State**  
**AGRICULTURE**

**Marty Lueck, manager**

**417-948-2669 or 417-838-1482**

**Rt. 1, Box 85G • Mountain Grove, MO 65711**

**[mvluock@centurytel.net](mailto:mvluock@centurytel.net)**



# Sale Roundup —

**Fort Keogh Livestock & Range  
Research Station  
Line One Bull Sale  
Miles City, MT  
March 12, 2016  
29 Bulls — \$3,569**

## Top Lots:

L1 Domino 14097 4/10/14 by L1 Domino 11512 to Schroer Herefords, Nelson, NE and Holden Herefords, Valier, MT, \$9,000

L1 Domino 14107, 4/18/14 by L1 Domino 11512 to Schroer Herefords, \$6,500.

L1 Domino 14066, 4/5/14 by L1 Domino 11512 to Preston Langley, Warwick, ND, \$6,000.

L1 Domino 14041, 3/28/14 by L1 Domino 12467 to Preston Langley, \$5,250.

L1 Domino 14037, 3/27/14 by L1 Domino 11550 to Mona Cole, Keldron, SD, \$5,000.

**Frenzen Polled Herefords  
Fullerton, NE  
March 22, 2016  
Auctioneer: Tracy Harl**

**29 Bulls — \$3,055  
16 Females — \$1,834**

## Top Bulls:

Frenzen Craftsman C03, 2/13/15 by Churchill Red Bull 200Z to Don Weaver, Big Sandy, MT, \$6,500 (1/2 interest, full possession.)

Frenzen Cadillac C55 ET, 3/19/15 by Churchill Red Bull 200Z to Gary Lindgren, Central City, NE, \$4,000 (2/3 int.,

full possession).

Frenzen Clydesdale C22 ET, 2/24/15 by Churchill Red Bull 200Z to Ann Lindvall, Edgar, NE \$5,000.

## Top Female:

Frenzen Vicky C109, 5/4/15 by Bar JZ Fahrenheit 603Y to Sam Smith, Batesland, SD, \$4,000.

**Oleen Bros. Production Sale  
Dwight, KS  
March 28, 2016**

**60 Fall Hereford Bulls — \$4,558**

**45 Fall Angus Bulls — \$5,184**

**5 Angus 2-Year-Old Bulls — \$5,520**

**18 Black Hereford Pairs — \$2,969**

**61 BWF Pairs — \$3,159**

**14 Hereford Pairs — \$2,954**

**41 Fall BWF Bred Heifers — \$2,446**

**19 Fall Hfd. Bred Heifers — \$2,663**

**16 Fall Angus Bred Heifers — \$2,409**

**7 Yearling Filly Colts — \$779**

**14 Yearling Stallion Colts — \$757**

**4 Geldings — \$5,525**

## Top Hereford Bulls:

Lot 37, JAK L1 Domino B252, 9/16/14 by JAK L1 Domino S301 to Hahn Ranch, Bartlett, KS, \$8,200.

Lot 76, JAK L1 Domino B392, 11/5/14 by CL 1 Domino 065X 1ET to Hahn Ranch, \$8,000.

Lot 17, JAK L1 Domino B161, 9/3/14 by CL 1 Domino 065X 1ET to Darrin & Eric Farmer, Oskaloosa, KS, \$7,100.

## Top Angus Bulls:

Lot 132, JAK Net Return B376,

10/25/14 by Buford Net Return Z150 to Cline Cattle Co., Onaga, KS, \$7,900.

**Ned & Jan Ward Polled Herefords  
Bull Sale  
March 29, 2016  
Auctioneer: Joe Goggins**

**75 Bulls — \$7,810**

## Tops:

NJW 79Z 22Z Mighty 49C ET, 2/8/15 by NJW 67U 28M Big Max 22Z to Perez Cattle Co., Nara Visa, NM and Upstream Ranch Taylor, NE, \$105,000 (3/4 interest, full possession).

NJW 79Z 22Z Wow 57C ET, 2/10/15 by NJW 67U 28M Big Max 22Z to Diamond J Farms, Beaver, OK, \$50,000 (3/4 interest, full possession).

NJW 135U 10Y Hometown 73C ET, 2/12/15 by NJW 73S W18 Hometown 10Y ET to Atkins Herefords, Tea, SD and Delaney Herefords, Lake Benton, MN, \$21,000 (3/4 interest, full possession).

NJW 103Y 174X Diablo 193C ET, 3/9/15 by NJW 76S 4037 Durango Spirit 174X to Frank Herefords, Columbus, MT, \$17,500 (3/4 interest, full possession).

CSC 10Y Mucho 503 ET, 2/9/15 by NJW 73S W18 Hometown 10Y ET consigned by Cody and Shawna Chabot, to Rankin & Sons, Draper, SD, \$14,000.



**Sandhill Farms  
Haviland, KS  
April 1, 2016  
Auctioneer: Jim Birdwell**

**113 Bulls — \$6,936  
17 Females — \$6,868**

## Top Bulls:

SHF Conqueror Z22 C66, 2/9/15 by SHF Manning W18 Z22 to Uinta Farms LLC, Flint, TX, \$31,000 (half interest). SHF Champion 001A C63, 2/7/15 by Gerber Anodyne 001A to Coyote Ridge Ranch, LaSalle, CO and Jensen Bros., Courtland, KS, \$30,000 (half interest). SHF Captain Z210 C285 ET, 2/6/15 by GV CMR X151 Mr 847 Z210 to K7 Herefords, Lockridge, IA and Sandrock Ranch, Benton, WI, \$20,000 (half interest).

SHF Cannon Z210 C95, 2/12/15 by GV CMR X151 Mr 847 Z210 to Crittenden Bros., Imperial, SK, \$20,000 (half interest).

**Knoll Crest Farm  
Red House, VA  
April 9, 2016  
Auctioneer: Dalton Bennett**

**16 Hereford Bulls — \$7,188**

## Top Bulls:

KCF Bennett 10Y C34, 1/29/15 by NJW 73S W18 Hometown 10Y ET to Sexing Technologies LLC, Navasota, TX, \$32,000 (half interest).

KCF Bennett C154, 2/28/15 by NJW 73S W18 Hometown 10Y ET to Churchill Cattle Co., Manhattan, MT, \$20,000 (half interest).

KCF Bennett Z311 C133, 2/25/15, by

(continued from page 29)

The study which used DNA in the form of blood from Hereford bull, L1 Domino 99375, was provided by Dr. Michael MacNeil's laboratory at Ft. Keogh, USDA-LARS, Miles City, MT. The DNA for the whole genome sequence was provided by Dr. Timothy Smith's laboratory, U.S. Meat Animal Research Center, Clay Center, NE, from white blood cells and spleen from L1 Dominette 01449, American Hereford Association registration number 42190680 (a daughter of L1 Domino 99375). Research is ongoing and ties in with human DNA research.

This study isolated the 3 billion base pairs including 22,000 genes of which 14,000 are common to other mammals.

To interpret the technical jargon, this allows the livestock industry to identify genetic qualities affecting production, reproduction, economic value, abnormalities and more. Genetically enhanced EPDs incorporate the technology from this. As genetic technology and mapping progresses in the future, no doubt it will be used to its highest advantage within the EPD system.

Twenty years ago A.I. was a big thing. Now the advancement of embryo transfer (ET), semen sexing and selection and more recently, in-vitro fertilization (IVF) are making great strides and becoming incredibly popular. Interesting to note though, you still can't fool mother nature. Lots of things are being learned such as gestation length in IVF cattle. I'm sure we will keep learning.

From high tech to low tech, we've seen a lot but some things just never seem to change. We continue to travel thousands and thousands of miles every year to cover events and sales. That probably won't change much. Other things progress quickly.

Our livestock video company, The Livestock Link, was started six years ago continues to grow. The services associated with this are videoing and editing, conducting video sales which is something monumentally different and clerking services. For those of you have yet to see a "video sale" the way we do it is by showing high quality videos which include EPDs and sire information,

on at least three large screen, high definition TVs. This set-up replaces bringing cattle through the ring, however the sale cattle are penned outside the sale barn. It allows for a much quicker, safer sale and cattle can be viewed at leisure outside. This business continues to progress and change quickly and we have new features each season.

On a different subject, the National Junior Hereford Association has grown by leaps and bounds. Always a strong organization, it now has one of the the largest junior livestock shows in the nation. Without a doubt many young leaders will be trained through the National Junior Hereford program. My hope is these young people will also go on to raise Hereford cattle as adults.

The best part of the last 20 years is our associations with so many of you out there. We've met and gotten to know some of the best people in the world. It's just as much a people business as a Hereford business.

Our main goal when we started this publication was to be a strong force for promoting Hereford cattle. This remains our goal today. As technology continues to progress I'm sure we will change more from print to digital and social media. My guess is the cattle won't change much but forms of communication will always be changing. It will be interesting to see what forms of selection will become available in terms of EPDs, DNA, embryology and science.

I would like to thank our loyal *Hereford America* and TLL employees who have helped us succeed with this great publication and new video company.

They bring their Hereford and livestock backgrounds and exceptional skills to the table in a big way which makes them all very good at what they do.

Thanks to my dad, Byron Bayers, who at the age of 86 still has a passion for the breed and wonderful talent as a writer. We've had fun selecting cattle together over the years and continue to do so.

Thanks to my husband Marc who has been here the whole way, integrally involved in *Hereford America*, and creating a fabulous livestock video company. He's the true road warrior.

Here's to at least another 20 more years of promoting Herefords. Thank you to all our Hereford friends.

— JBH



KCF Bennett Encore Z311 to Joe Waggoner, Carthage, MS, \$8,000 (1/2 int.)  
KCF Bennett X51 C152, 2/28/15 by KCF Bennett Revolution X51 to Chad Whitney, Murdo, SD, \$8,000.

**Thorstenson Hereford Ranch**  
**Selby SD**  
**April 9, 2016**  
**Auctioneer: Doug Dietterle**

**28 Hereford Bulls — \$4,080**  
**11 Angus Bulls — \$3,864**  
**24 Reg. Hereford Females — \$2,006**

**Top Hereford Bulls:**

THR Thor 5088C, 3/24/15 by NJW 37U 100W Trust 113Z to Brandon Rohrbach, Roscoe, SD, \$8,000.  
THR Thor 5105C, 3/26/15 by NJW 37U 100W Trust 113Z to Merlyn Thorstenson, Selby, SD, \$7,750.  
THR Thor 5176C, 3/31/15 by NJW 37U 100W Trust 113Z to Reuer Farm Inc., Hoven, SD, \$7,500.  
THR Thor 5150C, 3/29/15 by NJW 37U 100W Trust 113Z to Dan Schneider, Java, SD, \$7,250.  
THR Thor 5020C, 3/3/15 by Pyramid 3027 Domino 1109 to Eric Stuwe, Hoven, SD, \$6,500.

**Gerlach Herefords Sale**  
**Mitchell, SD**  
**April 9, 2016**

**20 Yrlg. Hereford Bulls — \$3,644**

**McClun's Lazy JM Ranch Sale**  
**April 14, 2016**  
**Torrington, WY**  
**Auctioneer: Lex Madden**

**30 Yrlg. Polled Hereford Bulls — \$3,582**

**2 Two-Year-Old Hfd. Bulls — \$3,375**  
**42 Yearling Angus Bulls — \$3,575**  
**5 Yrlng Pld. Hereford Hfrs. — \$2,140**

**Top Hereford Bulls:**

Lot 55, MC Performance Choice C8, 3/5/15 by RF Logical Choice 55W to Bedtick Ranch, Douglas, WY, \$6,500.  
Lot 69, MC Good Timer 52C, 3/3/15 by HH Perfect Timing 0150 to Maryevlyn Krejci, Lance Creek, WY, \$6,250.  
Lot 78, MC Fort 104C, 3/11/15 by SHF Milford W18 Z32 to Krejci, \$6,250.

**Top Hereford Female:**

Lot 103, MC Logical Bambi 46C, 3/2/15 by RF Logical Choice 55W to Roger Myers, Winner, SD, \$2,600.

**Top Angus Bulls:**

Lot 29, MC Final Product 108C, 3/11/15 by Connealy Final Product to William Garrelts, Torrington, WY, \$5,500.

**Bartling Herefords**  
**Herrick, SD**  
**April 15, 2016**

**Auctioneer: Dillon Lambley**

**46 Bulls — \$3,326**  
**45 Females — \$1,891**

**Top Bulls:**

BJ 1107 Domino 5085, 3/12/15 by KB

L1 Domino 1107Y to Bolton Ranch, Dallas, SD, \$7,250.

BJ 874U Montana Domino 5084, 3/24/15 by KB L1 Domino 874U to Bolton Ranch, \$5,750.

BJ 165 Advance Lad 5005, 3/16/15 by K Advancer lad 165, to Robert Kehn, Herrick, SD \$5,750.

BJ 165 Advance lad 5026, 3/4/15 by K Advancer lad 165 to Larry Alexander, Texas, \$5,500.

BJ 27A North Star 5024, 3/18/15 by R 0141 North Star 27A to Harold Burkinshaw, Newport, NE, \$5,500.

**Tricky's Herefords**

**April 16, 2016**

**Howard, SD**

**Auctioneer: Jay Elfeldt**

**Top Lots:**

Lot C01, Trickys Boy 1823-152 C01, 2/16/15 by GR 4th Revolution 152, to Greg Wettlaufer, Winfred, SD, \$5,000.

Lot C28, Trickys Revolution Z43-4R C28, 3/13/15 by MSU TCF Revolution 4R to Greg Wettlaufer, \$3,500.

Lot C07, Trickys Sheyenne A08-3X C07, 3/4/15 by TH 49U 719T Sheyenne 3X to TSR Cattle Co., Elkton, SD, \$2,900.

Lot C79, Tricky's Gunner W38-308A C79, 4/22/15 by BAR JZ Gunner 308A to Dennis Thelen, Alex, SD, \$2,750.

**Stuber Ranch**  
**Production Sale**  
**April 16, 2016**  
**Bowman, ND**

**Auctioneer: Joe & Greg Goggins**

**Top Bulls:**

SR Sustain 95C, 3/8/15 by Churchill Sensation 028X to Rankin and Sons Inc., Draper, SD, \$15,000 (3/4 int., and full possession).

SR Sustain 65C, 3/6/15 by Churchill Sensation 028X to Mill Creek Ranch, Alma, KS, (3/4 int. and full possession).

SR Factor 155C, 3/13/15 by BRC Factor Y19 to Van Newkirk Herefords, Oshtosh, NE, \$11,000 (1/4 int., full possession).

SR GK Sustain 885C, 3/12/15 by Churchill Sensation 028X to Rankin & Sons, \$14,500.

SR Diablo 1095C, 4/2/15 by SR Indigo 1181Y to Van Newkirk Herefords, \$14,000.

SR Caption 725C, 2/28/15 by R 2Y Caption 43A to Isbell Livestock, Solen, ND (3/4 int., full possession).

SR Western Lad 255C, 3/23/15 by SNS 40W Western lad 8A to Gene Boner, Red Cloud, NE, \$12,000.

SR Scope 1665C, 5/2/15 by CL 1 Domino 0130X 1ET to Giedd Hereford Ranch, Washburn, ND, \$12,000.

**SR Indigo 1355C, 4/12/15 by Churchill Sensation 028X to Pied Piper Farms, Hamlin, TX, \$10,000.**

**Blair-Athol**  
**HAROLDSONS**  
*Friends*

*75 Head Sell*

**Bred Heifers - Heifer Calves**  
**Select Embryos - Cow Calf Pairs**  
**Herdshire Prospects**

**October 16, 2016**  
**Arcola, SK, Canada 1:00 PM**

*Your Hosts*

**Blair-Athol Polled Herefords**

Duncan & Val Lees  
306.455.2619 (H) Duncan 306.577.9703 (C)  
Jeff, Grace & Family 306.577.1375 (C)  
www.blairatholfarms.com

**Haroldsons Polled Herefords**

Lenna, Kristy & Chad Wilson  
306.739.2643 (H)  
Chad 306.577.1256 (C)  
www.haroldsons.com

*Friends*

**Til-Toba Polled Herefords**

204.686.2289  
**Old Birchill Farm**  
306.489.4500

**Roselawn Polled Herefords**

204.534.8204

**U.S. Representatives:**

Marc Hotchkiss 605.490.1513  
Levi Landers 308.730.1396  
Tom Biglieni 417.827.8482



*Sale Staff*

**T Bar C Cattle Co. Ltd.**  
306.933.4200 (O) 306.934.0744 (F)  
info@tbarc.com

Ted Serhienko 306.221.2711 (C)  
Chris Poley 306.220.5006 (C)  
Shane Michelson 403.363.9973 (C)  
Ben Wright 519.374.3335 (C)

View videos of lots prior to sale and watch and bid live with

**DVAuction**  
Broadcasting Real-Time Auctions

View the catalogue online at [www.buyagro.com](http://www.buyagro.com)



# Junior National Hereford Expo Champions

July 9-15, 2016 • Madison, Wisconsin



**Champion Bred & Owned Heifer** – Rhett Lowderman, Macomb, IL with RJJ LCC Miss Poker Face 5C ET, a February 2015 daughter of CHAC Mason 2214.



**Reserve Champion Bred & Owned Heifer** – Rylee Barber, Channing, TX, with BR Amy Rielle 5538 ET, with an October 2015 daughter of DM BR Sooner.



**Champion Horned Heifer** – Chesney Effling, Ree Heights, SD with ECR Candi 5451 ET a March 2015 daughter of UPS Sensation 2296 ET.



**Reserve Champion Horned Heifer** – Stewart Skiles, Dalhart, Texas, and his heifer SULL Serendipity 5352C ET took home reserve grand champion honors in the owned horned heifer show.



**Champion Polled Heifer** – Carlisle Braman, Refugio, Texas with OCC Lady Cash 512 ET an April 2015 daughter of DKF RO Cash Flow 0245 ET.



**Reserve Champion Polled Heifer** – Rhett Lowderman, Macomb, Ill., with his heifer RJJ LCC Miss Poker Face 5C ET.

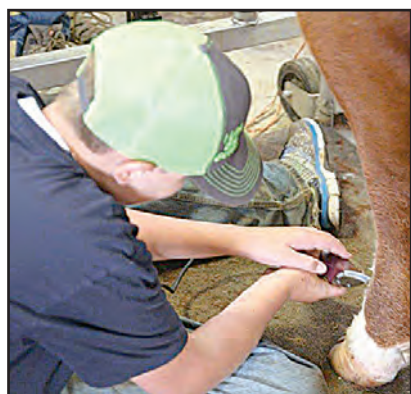
*Congratulations to all!*





**Idaho Trifecta** — Maddee Moore (left), National Hereford Women president, Sam Shaw, AHA president and Kelsey Stimpson, National Junior Hereford Association President.

Photo by Katie Frisbie Stimpson



Trevor Johnson from South Dakota putting the fine touches on...

Photo by Jeanne Johnson



**Long Day for Nebraska Kids** — Everett Funk (left, laying on heifer), Clairra Morgan (right), and Chase Morgan, little boy on the blower, all tired out after a day at the Junior National. Clairra and Chase are children of Pat and Jessica Morgan and Everett Funk, is the son of Cam and Carrie (Morgan) Ourada.

Photo by Roger Morgan



**Coloradoan Elected** — Congratulations to Brooke Hinojosa, Carr, CO, who was elected as a new board member of the National Junior Hereford board.

Photo by Linda Sidwell



Peyton Bischoff from South Dakota and his friend Dottie at the JNHE show.

Photo by Lori Peskey



**South Dakota** — Kyla Peskey enjoying JNHE... Glitter in My Veins and Hereford in My Heart.

Photo by Lori Peskey

## 70 live lots sell!

Offering bred heifers, bred cows, show heifer calves, herd sire prospects and embryos.

Proudly Presented By

2016 Beef-A-Rama Grand Champion Bull  
XLP KPH LC Tribute ET 707B  
Services Sell

ANL A XLP Action ET 75Z  
Agribition Reserve Grand Champion Bull  
Progeny & Services Sell

<p>Lone Pine Cattle Services Rob &amp; Dawn O'Connor 306-762-4543</p> <p>Mission Ridge Herefords Steve, Fran, Matt, Mark, Paul, James &amp; Michelle Hordos 306-835-2007</p> <p>Git-R-Done Ranch Trygve &amp; Jill Eidem 306-728-3339</p> <p>Triple H Farm Ltd Lyle &amp; Michell Heidecker 306-367-2016</p>	<p>JHF Herefords Raymond Johnson 306-675-6137</p> <p>Bieber Herefords Wally, Kathy, Herman &amp; Christina, &amp; Ann Bieber 306-727-3127</p> <p>HMS-Hi Cliffe Hunter, Morgan &amp; Sydney, Carmen &amp; Brenda Millham 306-867-4231</p> <p>Double Deuce Acres Ian &amp; Margaret Haynes 306-545-3992</p>	<p>Airriess Acres Trevor &amp; Sara Airriess 306-338-3496</p> <p>GWG Polled Herefords Gordan Gustafson 306-963-2638</p> <p>Jesse Procyk 306-722-3512</p> <p>Hereford GRLZ Kayla Hordos &amp; Rena Leier 306-835-2525</p> <p>Lohner Herefords Matt &amp; Kelly Lohner 306-697-7822</p>
--	---	---

**LiveAuctions.TV**

View the catalogue online at [www.BuyAgro.com](http://www.BuyAgro.com)

**T.B.A.R.C. Cattle Co. Ltd.**  
Your Program... Our Passion!

# Hereford Harvest

**October 14, 2016 ~ 2:00 pm ~ Vibank, SK**  
hosted by Lone Pine Cattle Services

Office: 306-933-4200  
Chris Poley: 306-220-5006  
Ted Serhienko: 306-221-2711  
Shane Michelson: 403-363-9973  
Ben Wright: 519-374-3335



# Junior National Hereford Expo Champions

July 9-15, 2016 • Madison, Wisconsin



**National Junior Hereford Board** — Chairman: Kelsey Stimpson, ID, Vice Chairman: Jessica Middleswarth, WY, Communications Chair: Kelsey Repenning, SD, Fundraising Chair: Steven W. Green, KY, Leadership Chair: Brooke Jensen, KS, Membership Chair: Austin Cole, KY.

(Back Row) Directors: Brooke Hinojosa, CO, Bailey Jones, WI, Austin Matheny, KY, Bailey McKay, KS, Nathan Hopkins, TN, and Mason Blinson, NC.



**Champion Bull** — Rylee Barber, Channing, TX, exhibited the grand champion bred-and-owned bull, BR RCR McKavett 5509 ET, a January 2015 son of UPS TCC Nitro 1ET.



**Reserve Champion Bull** — Burk and Cole Van Horn, Morgantown, IN, with JCB 262S Bronx 1002 an October 2014 son of KJ 068J Manhattan 262S.



**Champion Steer** — Nick and Austin Deppe, Maquoketa, IA, with DEP Generation X 9070 ET, weighed in at 1,340 lb. for a WDA of 2.77, and is a son of DEP Generation X 122 ET.



**Reserve Champion Steer** — Holly Shelton, Frederick, MD, with Megan Kingsley 23X 0921, weighed in at 1,170 lb. for a WDA of 2.82, and is a son of Purple Rollin Stone 15W ET.



**Champion Carcass Steer** — Jacob Bohnsack, Taylor Ridge, IL., with his 1,140-lb. steer by Purple Reuben James 40A ET. Scan info: REA 14.0, Backfat 0.40 backfat, marbling score 5.35 with a calculated 2.39 yield grade and carcass weight of 707 lb.



**Reserve Champion Carcass Steer** — Madison and Ashley Melcher, Page, NE, with their 1,175-lb. steer by BR DM TNT 7010 ET. Scan info: REA 13.4, Backfat 0.42, Marbling 4.46; YG 2.74; 729-lb. carcass.



# ANL Polled Herefords & Guests Production Sale

October 15, 2016 - 1:00 PM  
Steelman, Saskatchewan

Take Advantage of the  
favorable exchange rates!



ANL B&C 10Y Reese 16Y 5D  
Hometown 10Y x Tahoe



ANL RL 2447 Suma 24X 4D  
Game Changer x Tahoe



BNC Glenlees 14Z Chantel 1D  
TH Playmaker14Z x SHF Wonder



Glenlees 740 Greta 17C  
TH Sheyenne 740A x Haroldsons Jack



Brooks 521X 35B Rikki 11D  
TH Victor 521X X Redeem



Breed leading heifers like these sell  
from Blairs. Ag

## ANL Polled Herefords

Karl & Karen Lischka  
Ph: 306.487.2670  
Karl: 306.487.7794 Karen: 306.487.7793  
Cory, Meghann, Brenden & Cayden Lischka  
306 487 7721  
Josh Lasby: 519.278.6819  
lischka@sasktel.net  
www.anlpollherefords.com



Glenlees Farms

Corey, Tasha, Emma, Kyla & Becca Lees  
Ph: 306.455.2714 Corey: 306.577.9971  
tclees@signaldirect.ca  
George & Annette Lees  
Ph: 306.455.2612 Fax: 306.455.2177  
www.glenlees.com  
BNC Polled Herefords - Bobby Hull

## Brooks Farm

Blayne 306.485.7063 Jeremy 306.485.8003  
Blake 306.485.8488 Haley 306.485.9216  
jeremy\_16@hotmail.com

## Blairs.Ag Cattle Co.

Tom: 780-679-7220  
tom@bullseyefeds.com

## U.S. Representatives

Levi Landers 308.730.1396  
Jason Hoffman 530.604.5096  
Tom Biglieni 417.827.8482

## Sale Management

T Bar C Cattle Co. Ltd.  
Ph: 306.933.4200  
info@tbarc.com • www.buyagro.com  
Ted Serhienko: 306.221.2711 Chris Poley: 306.220.5006  
Shane Michelson: 403.363.9973 Ben Wright: 519.374.3335

View the catalogue online at  
**BuyAgro.com**  
then watch and bid live at

**DVAuction**  
Broadcasting Real-Time Auctions



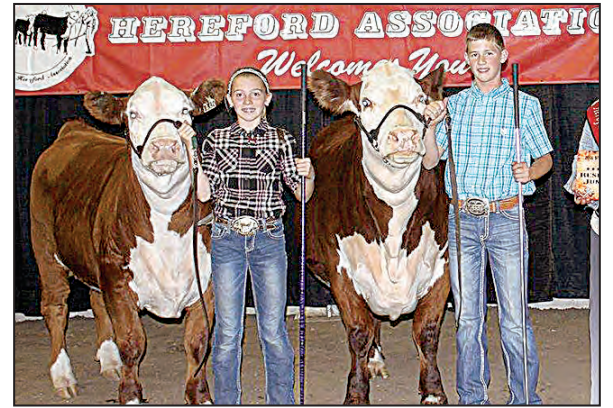
# Nebraska Junior Hereford Association Field Day Highlights



**Nebraska Senior Showmen** – Champion Bailey McKay and Reserve Railen Ripp at Nebraska Junior Hereford Field Day held in June.



**Nebraska Intermediate Showmen** – Champion, Hannah Williams and Reserve, Ralston Ripp.



**Nebraska Junior Showmen** – Champion Blake Bruns and Reserve, Rianna Cheney.



**Champion Bred & Owned Heifer** – Sage Krebs – with Queen Whitney Steckel



**Champion Bred & Owned Bull** – Katie Fehlman



**Champion Cow/Calf Pair** – Hannah Williams – with Bailey Lynne



**Champion Futurity Heifer** – Malina Lindstrom



**Champion Futurity Steer** – Levi Farr



**Champion Horned Heifer** – Carlee Meeks



**Champion Polled Heifer** – Malina Linstrom



**Champion Steer** – Wesley Denton



**Nebraska Junior Hereford Board of Directors**



The home of Miles McKee, Worlds Record Selling Bull  
**COLYER HEREFORDS**  
 15th Annual Fall Female Sale

**Sat., October 1, 2016** 5 p.m. MST ~ at the ranch BRUNEAU, IDAHO



**Numerous Select Lots by C Miles McKee 2103 ET sell!**

**87 Lots Sell!** including:  
 22 Heifer Calves, 28 Bred Heifers,  
 152 Embryos, 3 Donor Picks, 1 Herd  
 Sire Interest and 425 Straws of Semen



**CRR 5280**

Lead bull in the 2015 Champion Pen of Three in Denver. Great breeding bull with his first progeny selling on Oct. 1st. Your first opportunity to purchase semen in this sale as no semen has been sold previously.

**Selling half interest and full possession**



**C BAILEES MILES 4312 ET**

**Special addition to our fall sale!**



**C 88X NOTICE ME 1311 ET**



**C 88X RIBEYE LADY 2052**

Your opportunity to pick. Selling 1/2 interest in any two of our donor cows on the ranch.

**Lot 3 - C 1311 5280 LADY 6018 ET**

This entire flush is as consistent and high quality as we have ever had. This pedigree blends together some of the most modern cutting edge genetics available. Donor dam "1311" is a full sister to the record selling and Denver Supreme Champion "Miles McKee". Lot 3 is hard to fault and will likely be called the most complete in the group. We see her as being the one that will have the most distance. Deep ribbed, sound, and broody look.



**Lot 8 - C 5280 KATIE 6140 ET**

Full sister sells as Lot 9. These two females will be the topic of discussion after you see them. Both of these heifers are as good as we have produced. They are well marked, deep red and have that head turning look that is so hard to find. We feel lot 8 is a bit more powerful in her makeup and has a touch more width and volume. However if you like extreme look and great fronted females lot 9 is the one. We feel these two will battle for the top spot every time. Lot 9 reminds us of the National Champion "Candy Cane" in terms of her extra look and quality. They are a must see and will be highly competitive.



**Lot 27 - C BAR ONE 1262 MILES 4424 ET**

Here is a big bodied, massive female with extra rib and fleshing ability. Her mother is one of the most massive cows in the group of donors. Full sister sold to Copper Creek and Little Fort from Canada in last years sale. IMF Ratio of 117 and top 10% for Milk EPD. AI Bred 05/07/2016 to CRR 5280 due 02/14/2017, Checked Safe.



More info and videos at  
[www.hereford.com](http://www.hereford.com)

**LiveAuctionsTV**

**Colyer**  
 HEREFORDS  
 ANGUS

31058 Colyer Road • Bruneau, ID 83604  
 208/845-2313 (home) 208/845-2314 (fax)  
 208/599-0340 (Guy Cell) 208/250-3924 (Kyle Cell)  
[guy@hereford.com](mailto:guy@hereford.com) • [sherry@hereford.com](mailto:sherry@hereford.com) • [www.hereford.com](http://www.hereford.com)



THE BEST IN LIVESTOCK VIDEOS &amp; VIDEO SALES

# The Livestock<sup>TM</sup> Link

605/490-1513  
605/210-1956

## Video Shoots & Video Sales



## Cattle - any breed, Horses & Real Estate

### VIDEO SALES

- Using the biggest high-definition TV screens in the business.
- Full service.

### CLERKING

- Full clerking services with detailed reports.

AND MUCH MORE!

**More to come  
in 2017!**



**Inquire about the total package ... videoing, video sale and clerking.**

# The Livestock<sup>TM</sup> Link

THE BEST IN LIVESTOCK VIDEOS & VIDEO SALES

Contact us if you have questions.

Marc Hotchkiss - 605/490-1513 • 605/210-1956 cell  
marc.hotchkiss@gmail.com  
13823 Beaver Creek Place, Reva, SD 57651  
[www.thelivestocklink.com](http://www.thelivestocklink.com)



## AUCTIONEERS

### BALOG Auction Services, Inc.

Box 786  
Lethbridge, Alberta T1J 3Z6  
Canada  
(403) 320-1980  
1-877-320-1988  
Fax: (403) 320-2660  
www.balogauction.com



### DALE STITH Auctioneer

5239 Old Sardis Pike  
Mays Lick, KY 41055  
  
cell 918-760-1550  
dalestith@yahoo.com



### Lynn Weishaar Livestock Auctioneer

13567 SD Highway 79  
Reva, SD 57651

**605/866-4670**

### Seth Weishaar

Livestock Auctioneer

Bringing purebred & commercial cattlemen together.

♦ Purebred

♦ Commercial

11639 Snoma Rd.  
Belle Fourche, SD  
57717  
(605) 210-1124  
(605) 892-2640



## ARKANSAS

### Moon Herefords

www.moonherefords.com

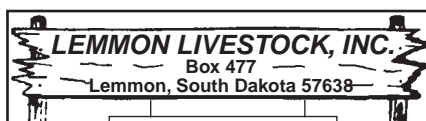
Canadian and Carpenter-Williams Genetics

A total Performance Program  
producing practical/efficient  
Horned Herefords for a practical world.

Harrison, Arkansas  
pamoon@windstream.net  
870-743-5003 (O)  
870-715-7244 (C)



## AUCTION BARN



Phone 605-374-3877  
or 1-800-822-8853

Paul Huffman, General Manager • 605-645-2493  
Chad Hetzel, Assistant Manager • 701-376-3748

• Sales Every Wednesday •

We feature  
Hereford & Hereford-X Cattle in Special Sales  
www.lemmonlivestock.com

## CALIFORNIA



### PEDRETTI DOMINOS

1975 E. Roosevelt Rd.  
El Nido, CA 95317

Gino & Mona Pedretti (209) 756-1609  
Mark St. Pierre (209) 233-1406  
Gino Pedretti Jr. (209) 756-2088

### Schohr Herefords

P.O. Box 391 • Gridley, CA 95948

Carl & Susan: 530-846-4354  
Steven & Joseph: 530-864-2855  
E-mail: ricencows@schohr.com



Selling bulls and heifers  
by private treaty.  
Contact us for semen  
on Dakota.

## CANADA

### BAR PIPE Hereford Ranch

Generation after generation, same trusted brand.

Jay Cross: (403) 978-2767  
Doug Finseth, Mgr.: (403) 938-7726  
Okotoks, AB  
www.barpipes.com



Nelson & Paula Doenz  
Phone: (403) 642-2380  
Fax: (403) 642-2471  
Brad & Veronica Doenz  
(403) 642-7694

E-mail: doenzranches@gmail.com  
www.doenzranches.net

PO Box 362, Warner, AB T0K 2L0  
3.2 km E of Warner on #504 & 3.2 km N on Rg Rd #170  
Annual Sale: Nov. 19, 2015 at the Ranch



### Hills Galore Stock Farms

ABBEY, SASKATCHEWAN

Alvin and Mary-Kate  
Pawlitza  
Julia, Alex  
and Georgia

Tel | 306/689-2597

Email | mk@hillsgalore.com

Web | www.hillsgalore.com

Mailing Address | Box 179, Hazlet, SK S0N 1E0

### Lilybrook Herefords, Inc.

Practical, Efficient Cattle Are Our Livelihood!

Andy Schuepbach  
Box 2044  
Claresholm, AB, Canada  
T0L 0T0



Phone: 403/625-4693 • Cell: 403/625-6316  
Fax: 403/625-1500

andy@lilybrookherefords.com  
www.lilybrookherefords.com



43342 Millar Ave  
Saskatoon, SK S7K 7G9  
Ph: 306-933-4200  
Fax: 306-934-0744  
info@tbarc.com  
www.buyagro.com

CHRIS POLEY: 306-220-5006  
TED SERHIENKO: 306-221-2711  
SHANE MICHELSON: 403-363-9973  
BEN WRIGHT: 519-374-3335

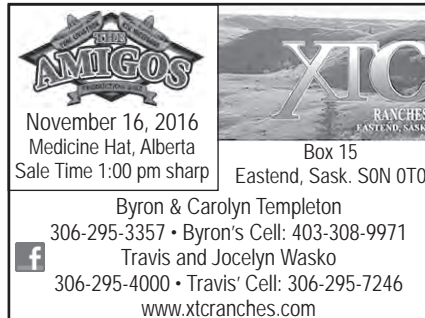


### ULRICH HEREFORD RANCH INC.

"Performance Tested Herefords"

Hans Ulrich Peter Ulrich  
(403) 625-2237 Cell (403) 625-1036

Email: peter@ulrichherefords.com  
Website: www.ulrichherefords.com  
Box 843, Claresholm, AB T0L 0T0  
From Claresholm, 8 mi. (12.8 km) E, 4 mi. (6.4 km) N, 1/4 mi. E.



### AMIGOS

November 16, 2016  
Medicine Hat, Alberta  
Sale Time 1:00 pm sharp

### XTC RANCHES

Box 15  
Eastend, Sask. S0N 0T0

Byron & Carolyn Templeton  
306-295-3357 • Byron's Cell: 403-308-9971  
Travis and Jocelyn Wasko  
306-295-4000 • Travis' Cell: 306-295-7246  
www.xtcranches.com

## COLORADO

### Ernst Herefords

Marshall Ernst Family  
Windsor, CO 80550  
970-381-6316  
www.ernstherefords.com

Bull Sale • March 29, 2017 • 1 p.m.  
at Shamrock Livestock • O'Neill, NE



High Altitude  
PAP Tested  
Since 1980 at 8,000 ft. +

Practical  
Proven  
Real World  
Cattle

FUCHS  
HEREFORDS  
3673 Co. Rd. 14  
Del Norte, CO 81132  
Mike 719/657-2519

• Bulls & Females for Sale •  
mikefuchsherefords@gmail.com

### Sidwell Herefords

54286 W.C.R. 27  
Carr, CO 80612

Harold & Bryan Sidwell  
970-897-2324  
970-381-0264 cell



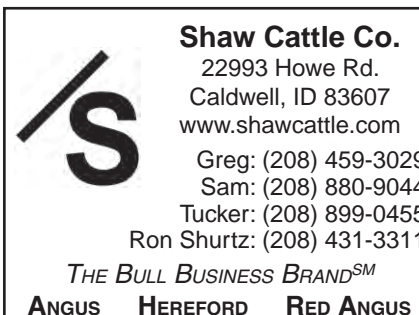
### STRANG HEREFORDS BLACK ANGUS

37th  
ANNUAL SALE

Tuesday,  
Oct. 18, 2016  
800-351-5362

970-878-5362 • 970-270-4445 cell  
Mary Strang & Family  
2969 County Road 8 • Meeker, CO 81641  
strangherefords@gmail.com  
www.strangherefords.com

## IDAHO

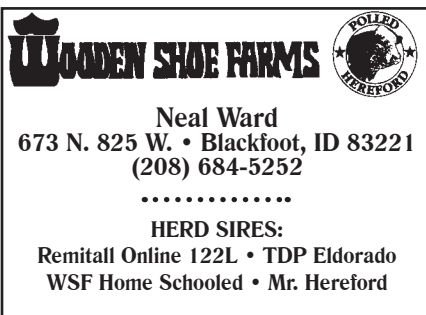


Shaw Cattle Co.  
22993 Howe Rd.  
Caldwell, ID 83607  
www.shawcattle.com

Greg: (208) 459-3029  
Sam: (208) 880-9044  
Tucker: (208) 899-0455  
Ron Shurtz: (208) 431-3311

THE BULL BUSINESS BRAND<sup>SM</sup>

ANGUS HEREFORD RED ANGUS



### WOODEN SHOE FARMS

Neal Ward  
673 N. 825 W. • Blackfoot, ID 83221  
(208) 684-5252

HERD SIRES:

Remitall Online 122L • TDP Eldorado  
WSF Home Schooled • Mr. Hereford

## IOWA



### Johnson Herefords

Since 1918

Registered Horned & Polled Herefords

Jack & Lynne Johnson  
2165 240th St.  
Milford, IA 51351

Jack: 712-260-3650 • Lynn: 712-330-7470



Good Doin' Genetics

### WIESE & SONS

Bulls, Females, Semen


Now in our 100th year of producing top Herefords

P.O. Box 305  
Manning, IA 51455  
712-653-3678

www.wieseandsons.com



# Hereford America



Hurry!  
Don't be late!

Early Bird Deadline is the 1st.  
Discount applies!  
Regular Deadline is the 5th

Call 605/866-4495 or e-mail  
jbh@herefordamerica.com

## ILLINOIS



**Baker Farms**  
1278 E. 20th Rd. • Streator, IL 61364  
Fred • Debby  
Sarah • Susan • John  
Phone: (815) 672-3491 • Mobile: (815) 257-3491  
Fax: (815) 672-1984

QUALITY & PERFORMANCE SINCE 1919



**Milligan Herefords**  
481 Church Rd  
Kings, IL 61068

JAMES (815) 562-4946    ROBERT (815) 562-6391    MALCOLM (815) 562-5879  
(815) 761-1523

*Superior Hereford Genetics*

**LOEHR HEREFORD FARM**  
P.T. "Pete" Loehr  
113 W. Northgate Rd  
Peoria, Ill. 61614  
309/692-6026 or 1-800-937-BEEF

*- The Best of the Best -*  
Line One, Canadian & Pure Gold

**STEPHENS HEREFORD FARM**  
STEPHENS TRAILER SALES  
*Eby aluminum livestock*

P.O. Box 168 • Taylorville, IL 62568  
Mark and Kayla Stephens  
217-825-7913 Cell  
mark\_stephens46@yahoo.com  
Danny Stephens, Trailers • 217-824-2815

## LIVESTOCK EQUIPMENT



PORTABLE & STATIONARY LIVESTOCK EQUIPMENT  
**FAWCETT ENTERPRISES, INC.**  
36111 211th Street ~ Miller, SD 57362-6814

For More Information Contact:  
**RANDY FAWCETT**  
Phone 605/853-3930 • Cell 605/461-9346 • Fax 605/853-3310

**CUSTOM DESIGNS AVAILABLE**

.....  
**www.herefordamerica.com**  
.....

## Hereford America

North America's Largest Privately Owned  
Hereford Newspaper.

Also providing livestock video services,  
video sales and clerking.  
Call 605/866-4495 for more information.

**www.herefordamerica.com**  
.....

## KANSAS




**Alexander Farms**  
**Polled Herefords**

LINEBRED KING DOMINOS

John Alexander Family  
2756 S. Donmyer Road  
Gypsum, KS 67448-9414  
Home: (785) 536-4931  
alexfarm@eaglecom.net  
facebook.com/alexfarmbeef

— Breeding Stock, Semen & Flushes For Sale —



and  
**BERAN BROS.**  
**ANGUS**

**HEREFORDS** 1350 NE 100 Ave.  
Claflin, KS 67525

Craig Beran, Jr. Gerald Beran, Jr.  
620/587-3709 620/587-3407  
620/786-9703 (cell) 620/786-9569 (cell)

Sale March 20, 2017  
\*CATTLE FOR SALE AT THE RANCH\*

**BTS HEREFORDS**

**Bruce & Tracy Schlickau**  
14601 South McNew Road  
Hutchinson, KS 67501  
Phone: 620-459-6576



Location: 5 miles south of Hwy 96 & 14 jct.  
1 mile east, then 3/4 mile south

**Quality Herefords by private treaty sales**



Registered  
Herefords  
SINCE 1965

**DAVIS HEREFORDS**  
Dean & Danny

(785) 256-4643 • (785) 256-4010

29111 Keene Eskridge Rd.  
Maple Hill, KS 66507  
13 miles west of Topeka on I-70.  
3 miles south on Exit 342.

**Deewall Family**

Mike Herefords

1074 Hwy. 1 Coldwater, KS  
620-635-6511 67029  
Mike & Jane 620-635-5978  
Deewall (cell)

**www.deewallherefords.com**

**4V RANCH DOUTHIT HEREFORDS**

**4V Ranch** 600 S Lorraine St  
St. Francis, KS 67756



**MARGO DOUTHIT**  
(785) 332-2323  
Cell 332-4240  
4vranch1@gmail.com  
4vranchdouthitherefords.com

**Bulls & Heifers For Sale**

**Douthit Herefords**  
Walter, Megan & Chuck

**Douthit-Downey Land & Cattle, LLC**  
Megan's cell (785) 332-8575  
Chuck's cell (785) 332-4034

1805 RS 115  
St. Francis, KS 67756  
www.douthitherefords.com  
megan@douthitherefords.com

**FLORY POLLED HEREFORDS**

Mike Flory & Family  
618 E. 800 Rd.  
Lawrence, KS 66047  
785/865-3444 • 785/979-3984  
mike.flory@sbcglobal.net  
JB Trojan & Polled LI

Performance tested since 1979.  
Functional cattle with multi-trait performance.



FOR ALL YOUR NEEDS IN HEREFORD CATTLE  
IN KANSAS AND SURROUNDING STATES

**THE KANSAS HEREFORD ASSOCIATION**  
Tom Granzow, Secretary-Manager  
765 South 3000 Road  
Herington, Kansas 67449  
785-466-2247 785-466-2226 (FAX)

kansashereford@tctelco.net  
www.kansashereford.org

**Gustafson Herefords**  
Gus, Deb and Shelbi Gustafson

7477 Davis Creek Road  
Junction City, KS 66441  
785-238-7306

I-70 exit 303... 7 miles South

**Visitors Always Welcome**

**Granzow Herefords**  
Tom, Mary & Tobyn Granzow  
765 South 3000 Road  
Herington, KS 67449  
785/466-2247 or 785/466-6438  
www.granzowherefords.com



MEMBER OF THE PTP ALLIANCE

**FRANK HUG & SONS**

Bulls & Females  
For Sale Private Treaty

2556 W. 125th Street  
Scranton, KS 66537

Bob Hug 785/230-0434    Ed Hug 785/230-7597  
fhug-sons@excite.com

**JENSEN BROS.**  
**Jensen Livestock Agency**  
Kevin & Sheila Jensen  
P.O. Box 197 • Courtland, KS 66939  
785-374-4372  
Kevin: 785-243-6397  
jensenks@courtland.net  
www.jensenbros.net

Internet Heifer Sale: Oct. 13, 2016  
Annual Bull Sale: March 2, 2017

**See us for your next herd sire!**

**MALONE Hereford Farm**

1371 Road F  
Emporia, KS 66801  
Phone/Fax: 620-342-7538  
Alton's Cell: 620-794-2358  
ammalone@lcwb.coop

Alton, Marie, Brian, Dustin and Michelle Malone



1237 N. 13th Rd  
Lucas, KS 67648

Gene: 785/658-5612  
meitlercattle@wilsoncom.us  
Darris: 785/658-5208  
Clint: 785/658-7028  
www.meitlercattle.com

**MILL CREEK RANCH**  
20635 Hessdale Rd  
Alma, KS 66401  
David Breiner (785) 449-2841  
David cell (785) 456-4790  
Chad Breiner (785) 564-2091  
Ryan Breiner (785) 207-3070

www.millcreekranh.com  
millcreekranh@embarqmail.com

Production Sale Last Tuesday in February  
MANHATTAN, KS

"Best of Both Worlds Sale" • 4th Mon. in March  
12 noon at the ranch • Dwight, KS



Also selling  
70 F-1 Black  
Baldy heifers  
with calves,  
75 Fall bred  
heifers  
20 Quarter  
Horses

Jan: 785-482-3383 • Arden: 785-466-1422  
Box 8, Dwight, KS 66849  
E-mail: jakoleenbros@tctelco.net  
www.oleenbrothers.com



**Sandhill Farms**

**Registered Polled Herefords**  
Kevin, Vera & Tyler Schultz  
2408 280th Ave., Haviland, KS 67059  
Phone: (620) 995-4072 • Cell: (620) 546-4570  
Tyler Cell: (620) 546-1574  
e-mail: kevin@sandhillfarms.com  
website: www.sandhillfarms.com  
Sale 1st Friday in April

**Schlickau Herefords**  
Since 1913

**Cattle for Sale Private Treaty**

Lois  
James and Charlene  
H: 620/465-2691  
Cell: 316/734-3700  
james.schlickau@renogov.org

H: 620/465-7749  
14506 S. Victory Rd.  
Haven, KS 67543  
schlickauhfd@embarqmail.com

**SMITH CATTLE**



Reg./Com. Polled Herefords  
Redfield, Kansas

Farm: 620/756-4138 • Cell: 620/365-1737



# MINNESOTA

**BELL'S RAWHIDE RANCH**  
Horned & Polled Herefords  
F1 Baldy Heifers  
**Quality Cattle & Horses**  
6006 76th St. SW  
Motley, MN 56466  
Roy & Tammy Bell  
(218) 397-2579  
cell (218) 296-1960  
2.5 miles East of Leader

**CARLSON FARMS**  
CF  
1470 10th St. N.E.  
Murdock, MN 56271  
rbmrc1@gmail.com  
Ross, Beth, Mallory, Regan 320-366-3726  
Rob, Jean, Brett, Bailey, Brook 320-366-3970

**Dakitch Hereford Farms**  
David, Lorie, Michael & Mason Kitchell  
Matthew & Darci Kitchell  
3471 State Highway 200  
Ada, MN 56510-9260  
**Quality, Performance Cattle For Sale**  
www.dakitchfarms.com 701-799-7690  
dakitch@arvig.net Visitors Always Welcome

**Delaney Herefords**  
Jerry & Shelly Delaney  
2071 Co. Rd. 101  
Lake Benton, MN 56149  
Home: 507/368-9284 • Cell: 507/820-0661  
jdh@delaneyherefords.com  
www.delaneyherefords.com  
**Cattle for sale at all times.**

**DOSE FAMILY HEREFORDS**  
Building a family tradition on maternal cow power  
Allan & Joleen Dose Family  
Arlington, MN 55307 C: 320-583-8002  
allandose@frontiernet.net  
www.dosefamilyherefords.com

**JIM, JERI, JODY, JAIME HANSON HEREFORDS**  
37590 110th St  
Comfrey, MN 56019  
507.877.3631  
jerihanson@hotmail.com  
Jim's Cell 507.829.6756 • Jeri's Cell 507.828.2211  
Jody's Cell 507.276.8577 • Jaime's Cell 507.276.8237

**JMF Herefords and Sim-Angus**  
ANNUAL BULL SALE,  
FIRST SATURDAY IN FEBRUARY  
Jared, Makayla, Jaelyn, Tayton and Ty Flower  
Holloway, MN  
Jared: 320-413-0483 www.jmfherefords.com  
Makayla: 605-690-6050 jmflower.11@hotmail.com

Early Bird ad deadline  
1st of month!  
(10% discount)  
**Hereford America**  
605/866-4495  
www.herefordamerica.com  
jbh@herefordamerica.com

**Jones Farms**  
Dave & Susan Jones  
31490 E. State Hwy. 112  
LeSueur, MN 56058  
(507) 665-3962  
(507) 317-5996 cell  
**Breeding Stock For Sale**  
Bulls, Heifers, Club Calves,  
F1 Baldy Heifers

**KLAGES HEREFORDS**  
Quality seedstock for sale  
Jeff & Mary Klages  
64090 410th St  
Ortonville, MN 56278  
ph/fax (320) 273-2163  
jmkklages@fedtelnet.net

**Kroening Black Herefords**  
DNA Profiled - Performance  
Registered Black Herefords  
Richard and Julie: 218-435-1223  
Mike & Bridget: 218-230-1173  
Fosston, MN  
juliek@gvtel.com

**Krogstad Polled Herefords**  
Les Krogstad 3348 430th St. Fertile, MN 56540 (218) 945-6213 (218) 289-5685 (cell)  
Darin Krogstad 16765 Welch Shortcut Welch, MN 55089 (651) 485-0159  
les@krogstadpolledherefords.com  
www.krogstadpolledherefords.com

**Lawrence Herefords**  
Since 1957  
2477 N.W. Main St. • Coon Rapids, MN 55448  
Cattle at Princeton, MN  
**Bulls & Females For Sale**  
Doug & JoAnn (763) 755-4930  
Bryan & Marytina (763) 389-0625  
Bradley & Brigitte (612) 720-1311  
E-mail: joannlawrence8@msn.com

**Lind Polled Herefords**  
Since 1958  
• Dan • Erika • Susie • Judy •  
Contact: Dan Lind  
200 E. Grove St.  
Rushford, MN 55971  
(507) 864-2298  
cell: (507) 458-2080  
e-mail: Lind2@acegroup.cc  
Visitors Always Welcome

**The Livestock Link For All Your Livestock Video Needs**  
Call Marc Hotchkiss  
605/490-1513

**Lost Meadows Farm**  
Registered Polled Herefords  
Shawn & Dawn 36860 Rethwisch Lane Frazee, MN 56544 218.334.4045  
Dave & Rhonda Eckert 18513 405th Ave Frazee, MN 56544 218.334.5732

**Polled Herefords • Sales**  
**McIver's Happy Acres**  
David, Maryln, Scott and Tom McIver  
15624 340th Ave. Phone: 320-283-5776  
Farwell, MN 56327 Fax: 320-283-6044  
mcivers@runestone.net  
www.mcivershappyacres.net

**Nelson Polled Herefords**  
Phil • 507-629-3375 1616 Co. Rd. 11 Tracy, MN 56175  
Will • 507-626-0239  
E-mail: wnelson@westtechwb.com  
Herd Bulls  
NPH Active in NPH Prospector 351  
T.P.R. EFBeeF U248 Fellis A246  
D.N.A. NPH President Lamplighter 105  
NPH Beau Lamplighter 229  
Proud to be a Hereford Breeder

**Minnesota Hereford Breeders**  
Secretary/Treasurer  
Kory and Michele Kruse  
2075 51st St.  
Ellsworth, MN 56129  
507-920-5474  
kmkruse96@gmail.com  
minnesotaherefordbreeders.com

**"Quality" not "Quantity" Hereford Cattle**  
**Schmidt Herefords**  
Pipestone, MN 56164  
John A. Schmidt 787 70th Ave. (507) 825-2383 cell: (507) 215-1037  
John E. Schmidt 905 7th St SW (507) 825-2786 cell: (507) 215-1174

ADS due by the 5th of the month!  
**Hereford America**  
605/866-4495  
www.herefordamerica.com  
jbh@herefordamerica.com

**SPRINGWATER SPH Polled Herefords**  
Chad, Lacey, Easton & Michoen Williamson Pipestone, MN 507/825-5766 507/215-0817 springwater@svtv.com  
Troy Williamson Garretson, SD 507/597-6221 605/254-7875 twilliamson@alliance.com.net

**SCHAFFER HEREFORDS**  
**Lester & John Schaffer**  
FOR SALE:  
Bulls 64664 170th St. Buffalo Lake, MN 55314 (320) 833-2050  
Females (320) 582-1458 John cell  
Semen (320) 582-0489 Les

**Whispering Pine Farms**  
Select Hereford Genetics  
www.whisperingpinefarms.com  
72196 325th St., Kimball, MN 55353  
Jason & Marcy McDonald  
Home: 320.398.6317 • Cell: 320.221.0280  
jasonm@meltel.net

**Inquire about the total package ... videoing, video sale and clerking.**

**The Livestock Link**  
THE BEST IN LIVESTOCK VIDEOS & VIDEO SALES

Contact us if you have questions.

Marc Hotchkiss - 605/490-1513 cell • 605/210-1956 cell  
marc.hotchkiss@gmail.com  
13823 Beaver Creek Place, Reva, SD 57651

**www.thelivestocklink.com**



## MONTANA



Byron Bayers  
248 Bayers Lane  
Twin Bridges, MT 59754  
(406) 684-5465  
bayers@3rivers.net



**Private Treaty Sales**  
www.beeryherefords.com  
*Eastern Montana's finest Herefords*  
~ Horned & Polled ~ Matt & Krista  
Joanne 406/773-5721  
406/773-5710 cell 406/979-5720  
Also selling Red Angus bulls & females

ADS FOR  
the OCTOBER issue of  
Hereford America  
**must be in by**  
September 5.

## DALLAS POLLED HEREFORDS

Don Dallas  
Box 532  
Canyon Creek MT 59633  
406/368-2244 Ranch  
406/443-5110 Office  
*"Mountain Raised Performance Cattle"*

## DUTTON HEREFORDS



190 Sunnyside Ln.  
Gold Creek, MT 59733  
Dean (406) 288-3330

*Registered bulls and commercial  
bred heifers for sale.*

## EGGEN'S J BAR E RANCH

Since 1898  
Jay-De  
Arvid & Linda (406) 671-7149  
(406) 895-2657 Lorrie  
(406) 765-7068 cell (406) 765-8219  
Box 292 • Plentywood, MT 59254



Mark, Della, Lacey & Jane'a Ehlke  
PO Box 178 • Townsend, MT 59644  
Mark: 406/439-4311 • Della: 406/439-4300  
www.ehlkeherefords.com

## FEDDES Herefords

www.feddes.com  
TFeddes@msn.com  
Dan (406) 284-6810 • cell 570-1602  
Tim (406) 284-6990 • cell 570-4771  
Marvin  
2009 Churchill Road  
Manhattan, MT 59741-8122



Genetics for Certified Hereford Beef®  
REGISTERED POLLED HEREFORDS

Fred, Doreen and Rebecca McMurry  
2027 Iris Lane Ranch 20 miles  
Billings, MT 59102 east of Billings on  
(406) 254-1247 Squaw Creek Road  
(406) 697-4040 (cell) www.mcmurtrycattle.com  
(406) 254-1247 (fax) mcmurtrycattle@gmail.com



**MOHICAN WEST**  
3100 Sportsman Park Road  
Laurel, MT 59044  
Phone/Fax (406) 633-2600  
Terry Powlesland (406) 633-2810



REAL WORLD - HONEST - GUARANTEED BULLS

Ace & Tara Diemert BREEDING HEREFORD  
230 3700 Rd South CATTLE SINCE 1945  
Lothair, MT 59461  
406/432-3412  
ngrhereford@northerntel.net

The next issue is  
**OCTOBER**

E-mail:  
jbh@herefordamerica.com

## Steer In Trailer Sales



New & Used  
Stock & Horse Trailers  
Flatbeds - Mats -  
Cargo Trailers

Located at I-90 and Hwy. 287

29 Bronco Drive (406) 285-4300  
Three Forks, MT 59752 Fax: (406) 285-4146  
www.steerin.com 1-877-335-5372



10069 River Road Chuck, Kathy & Katelyn Kohlbeck  
Bozeman, MT 59718 Chuck, cell (406) 580-8255  
SHR@storeyherefordranch.com



HORNED P.O. Box 330055 POLLED  
Gold Creek, MT 59733  
BULLS & HEIFERS FOR SALE  
Richard & Shirley (406) 560-8122  
Bruce (406) 544-1536  
e-mail: bruce@thomasherefords.com  
www.thomasherefords.com



**Weaver Herefords**  
Don & Dolly Weaver  
28108 Warrick Rd.  
Big Sandy, MT 59520  
(406) 386-2244

e-mail: dwhrfrd@gmail.com  
www.weaverherefords.com

Heifers for sale private treaty in the fall.  
Annual bull sale the first Monday in March.

## NEBRASKA

(continued on next page)

## BLUEBERRY HILL FARMS

Doug Bolte, Manager



Office Phone 402/371-0931  
Home Phone 402/379-1432  
Cell Phone 402/640-4048  
Fax 402/644-8010  
email: dbolte@telebleep.com

1103 So. Grandview Drive  
Norfolk, NE 68701

## ESTERMANN HEREFORDS

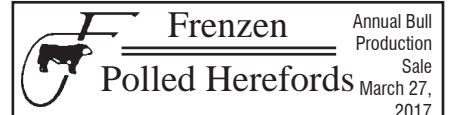
— Continuous Herd Since 1899 —  
32 years of Canadian breeding

Joe, Marlene & Dan Estermann  
35219 S. Somerset Rd.  
Wellfleet, NE 69170  
Phone: 308-963-4473  
E-mail: jester mann@nebnet.net

## Quality Cattle That Work



Lowell & Carol 48979 Nordic Road  
(402) 589-1347 Spencer, NE 68777



Females and Club Calves  
for sale at private treaty.

**Galen, Gwen and Eric Frenzen**  
50802 N. Edgewood Rd. • Fullerton, NE 68638  
Galen's Cell: (308) 550-0237 • Eric's Cell: (308) 550-0238  
www.frenzencattle.com

## GIBSON HEREFORDS

Line 1 Breeding

LARRY AND KAREN GIBSON  
35570 W. Gibson Rd.  
Wallace, NE 69169  
308-387-4580 ~ 308-530-6435  
kgibson@nebnet.net



## Show Heifers & Steers

Randy Helms Cody Helms  
73031 Rd 419 303-842-9071  
Holbrook, NE 68948  
308-493-5312

## HENKEL POLLED HEREFORDS

Pure Station  
Polled L1 Dominos

GENE ERIC  
402/729-5866 402/239-9838  
56095 - 715 Rd. • Fairbury, NE 68352  
henkelhereford@hotmail.com

## HUWALDTS HEREFORDS

86423 558 Ave • Randolph, NE 68771

Ed & Marsha Angie  
Home: 402/337-0784 Cell: 402/360-4796  
Cell: 402/360-4387  
Keith & Virginia  
402/337-0307

Email: huwed@live.com  
Website: www.edhuwaldt.com  
Polled Hereford Bulls & Females For Sale at Private Treaty.  
Visitors Always Welcome!

## JB RANCH Polled Herefords

Milk, Muscle Performance & Weight

Bulls and Females  
Always For Sale, Females  
that Visitors Always Welcome! that  
Perform Prolific + Disposition Produce

Jack & Bev Beeson 402/375-3404  
Wayne, NE 68787 cell: 402/375-9027

Feed Efficiency, Carcass,  
Moderate size, High gain  
Documented proof

## KEG HEREFORD RANCH

Ken & Marilyn Stephens  
39753 906th Rd., Valentine, NE 69201  
402-376-1267

## LARSEN'S POLLED HEREFORDS

CATTLE FOR BOTH PUREBRED  
AND COMMERCIAL PRODUCERS

Larry Larsen Selling at  
2497 Hwy 51 Shamrock Livestock  
Decatur, NE 68020 in O'Neill  
402-349-5589 April 14, 2016.

## LINTON POLLED HEREFORDS

Art & Jean Linton  
77414 Hwy 183  
Miller, NE 68858  
Home: (308) 457-1127  
Cell: (308) 293-5816  
ajlinton@frontiernet.net  
www.lintonpolledherefords.com



(continued from previous page)

## NEBRASKA

**MELCHER HEREFORDS, INC.****For Sale**

Hereford Bulls • January 2017  
Dehorned commercial heifers for sale now  
260 Hereford heifers bred Angus  
(Carter Windstar 218)  
90 red baldy heifers bred Red Angus (Conquest)

Don: 402-336-7194 • Kevin: 402-340-6189  
86288 Voyager Rd., Page, NE 68766

**MONAHAN  
CATTLE  
COMPANY**

Brand of Quality  
Herefords

P.O. Box 306 • Hyannis, NE 69305

James (308) 458-8019  
Bryan (308) 458-8021  
Bob (308) 458-8024

**NHA**  
NEBRASKA HEREFORD ASSOCIATION

Melissa Buehler, Executive Director  
1519 F Street, Fairbury, NE 68352 • (402) 239-9712  
www.nebraskaherefords.com



since  
1907

**Ridder  
Hereford Ranch**

John & Mary Ridder  
Callaway, Nebraska

308/836-4430

mailbag@RidderRanch.com  
www.ridderranch.com

• Sale first Thursday in February •

**SCHUTTE &  
SONS**

1417 Road 2100  
Guide Rock, NE 68942-8099  
Ron Schutte  
402-756-3462 • 402-746-4378 cell  
rnschutte@gtmc.net  
www.gtmc.net/schutte

**Schroer Herefords**

Lavern Schroer Family  
2924 Road P ~ Nelson, NE 68961  
402-756-7834  
cell ~ 402-879-8056

Line One Herefords.

Bulls and females for sale by private treaty.

Cattle bred up, not fed up!



See you  
on the tour  
Sept. 10-11.  
See ad on  
page 8 for  
details.

**STEWART HEREFORD RANCH**

Jay and Kaye Stewart  
45717 875th Rd  
Newport, NE 68759

Phone: (402) 244-5457  
Cell: (402) 760-0961

**TEGTMEIER  
POLLED HEREFORDS**

57th Annual Sale March 6, 2017  
71556 609th Ave.  
Burchard, NE 68323  
Russ: (402) 865-5805  
www.tegtmeierpolledherefords.com



Scott & Judy McGee  
Blake McGee  
Melissa & Brandon Buehler  
Darcy & Mick Pesek

1900 G Street  
Fairbury, NE 68352  
Scott's Cell: 402-300-2659  
www.valleycreekranch.net

**VAN NEWKIRK  
HEREFORDS**

Quality Herefords Since 1892

Sale: January 16, 2017

☆ Joe Van Newkirk  
Oshkosh, NE 69154  
Phone: 308/778-6049

www.vannewkirkherefords.com

**Vin~Mar**

Cattle Company

Owners: Vince, Mary, Ryan & Bryson Bickel ~ Jerry & Suzy Bottorff

Contact Vince at 308-282-0416 or Cell: 308-360-0336

2821 630th Rd  
Gordon, NE 69343

www.vinmarcattle.net  
Email: vmbickel@gpcom.net

Registered Black Angus & Hereford  
Visitors Welcome Anytime!

## OHIO

**Grandview  
Hereford Farms**

Horned bulls always for sale.

Jay, Becky, Laramie & Codee Reed  
5890 Moorefield Rd.  
Springfield, Ohio 45502  
(937) 342-0629  
grandview5890@att.net



Lisa Finnegan Keets, secretary  
440-320-6193  
ohioherefordlady@yahoo.com

Sale • March 2017 • Columbus, OH  
www.BuckeyeHerefords.com

ADS for the  
**OCTOBER ISSUE**  
MUST BE IN BY  
**September 5** - early bird discount of 10% if all materials in by Sept. 1  
E-mail: jbh@herefordamerica.com

## OREGON

**Allison  
HAY & HEREFORDS**

Mike & Carol Allison  
70641 Kunze Lane • Boardman, OR 97818  
(541) 571-7139  
(541) 571-7313

**BIRD  
HEREFORDS**

David and Lynda Bird  
Phone: (541) 742-5436  
E-mail: bird@pinetel.com  
45863 Crow Rd.  
Halfway, Oregon 97834

**Chandler Herefords Inc.**

Wide, Thick, Long, Correct, Beautiful, Balanced Herefords  
127 Years in the business

541-523-2166

George

541-403-0125

Duane

541-403-0124

17578 Chandler Lane

Baker City, OR 97814

www.chandlerherefords.com

E-mail: chandlerhereford1889@yahoo.com

Get your ads  
in on time!

Hereford America  
605/866-4495  
www.herefordamerica.com  
jbh@herefordamerica.com

**HARRELL  
HEREFORD RANCH**

42590 SALMON CREEK ROAD  
BAKER CITY, OR 97814

Bob Harrell, Jr. Don Schafer  
541/523-4322 541/403-0008

Registered Hereford Cattle and Quarter Horses  
ANNUAL SALE FIRST MONDAY IN MARCH

## OKLAHOMA

**Bowling Herefords**

BR Joe Domino 1014 ET  
Churchill Jury 1150Y ET  
UPS Advance 0906  
D 408 Mr Harland 410 134X ET

Melvin Young Nancy Bowling  
Herdsmen  
580-761-9257 nkbowling@yahoo.com  
580-362-5026

2211 S. 29th Co. Rd. Blackwell, OK 74631

**DAY HEREFORDS**

Hazlett-Turner Ranch Bloodlines  
Disposition & Thickness Bred

"Located in the heart of the Old Hereford Heaven"  
next ranch north of the famed former Turner Ranch on Hwy 1

Mr. & Mrs. Richard C. Day & Family  
3284 St Hwy 1 W • Roff, OK 74865  
580-456-7567

**Lents**  
Anxiety 4th Herefords  
Thick, substantive & efficient!

J.H. "Jim" Lents  
25398 SW Coombs Rd  
Indianapolis, OK 73552

Home 580-246-3560  
Cell 580-704-3560  
jhlents@sirinet.net





## Kansas Jr. Showmen Excel



**North Central Kansas Livestock Circuit 2016 Awards** – (Left to right) Katherine Krauss, premier overall senior beef exhibitor (and 4th high senior sheep exhibitor); Katy Pieper, 6th high overall intermediate beef exhibitor (Dave and Dana Pieper's daughter/Charlie and Darla Moore's granddaughter/Darrell Sutors granddaughter.) Avery Nichols, 3rd high overall intermediate beef exhibitor (Brock and Carolyn Nichols son/Jim and Carol Nichols grandson/Harold and Pat Carswell's great-grandson); Emma Nichols, 5th high overall junior beef exhibitor (Brock and Carolyn's oldest daughter). Katherine was packing a February heifer out of 5216 and Aggie bred daughter, a March heifer out of 5216 and a Mark Donald bred cow, and a April heifer out of a 22T son and an Achiever-bred cow, all home raised, and a home raised steer out of a 22T son and a King Ten bred cow and an Advance Red 11 bred steer she purchased from Mike and Jane Deewall. Katy and the Nichols kids were packing home-raised calves as well. The long dark for Herefords and Hereford kids in the 4-H shows in this part of the country is finally ending.

— Report and commentary by Tom Krauss



## Nebraska Hereford Crossroads Reception

The second annual Hereford Crossroads reception will take place Saturday, October 15th at the Newberry building in downtown Alliance, NE. Hosting the event will be Dr. James Furman, Steve Furman and Dr. Bruce Forney. Hereford Crossroads is dedicated to preserving the Hereford heritage of Nebraska for future generations. The reception will begin with a social hour at 5 p.m. Snacks/appetizers at 6 p.m. followed by a program and wrapping up the evening will be a live auction with a limited number of very nice items.

Local current and former Hereford breeders and friends are encouraged to bring items for a silent auction. Table displays of Hereford memorabilia from Panhandle breeders will be viewed and enjoyed by the expected large crowd. For more information contact Terri Licking @ 308/650-0662 Linda Teahon @ 308/430-0786 Geri Monahan @ 402/580-6653 or Richard Brown @ 402/560-2193

Photo by Linda Teahon

## NORTH DAKOTA

### Behm Polled Herefords

Larry, Aneica,  
Lindsey, Nicole and Logan Behm  
5944 Hwy. 1806  
Beulah, ND 58523  
701-873-2646  
e-mail: albehm@westriv.com



### BOEHNKE HEREFORD RANCH

Registered Herefords Since 1946

Unpampered • Functional • Sound  
Cattle for Sale at All Times

8424 4th Ave N.E.  
Kramer, ND 58748  
Jeff 701-359-4450 • Jared 701-201-0445  
e-mail: jboehnke@utma.com

### CARTER'S / PENNER POLLED HEREFORDS / LAND & CATTLE



Annual Bull Sale  
at the farm in Rocklake, ND  
1st Saturday in February

Jimmy Carter Jay & Malynda Penner  
P.O. Box 55 28074 440th Ave  
Rocklake, ND 58365 Freeman, SD 57029  
701-266-5575 605-929-7314  
mrs.penner@hotmail.com

### DIAMOND R HEREFORDS

Randy & Julie Lemm Family  
623 166th Ave. SE  
Hillsboro, ND 58045  
(701) 636-5465  
rdlemm@yahoo.com

### Merlin & Eunice Fornes

Quality grass-raised  
Polled Herefords



12169 56th St. SE  
Kathryn, ND 58049  
(701) 924-8360

### FRIEDT HEREFORDS

Production Sale Feb. 8, 2017  
& Private Treaty

Gary, Kirsten & Aaron  
8733 55th St. SW • Mott, ND 58646  
701/824-2300 • Gary's cell: 701/290-7231  
Megan & Dusty Dukart 701/290-7230  
Lindsey & Drew Courtney  
E-mail: gfriedt@hotmail.com  
Website: www.friedtherefords.com

### HELBLING HEREFORDS

Registered and commercial.  
Bulls and females for sale any time.  
— Private Treaty —

4785 Co. Rd. 83 • Mandan, ND 58554

Jim Fred Wayne  
701-663-7123 701-663-0137 701-471-4391

E-mail: helbling95@msn.com

### HUSO & SONS HEREFORDS

Bred For Better Beef™  
Jim Huso

701.326.4278 or 701.326.4176 (evenings)  
11922 17th St. NE Aneta, ND 58212  
www.husoandsons.com

### MIDWAY POLLED HEREFORDS

7480 26th St.  
Sheyenne, ND 58374

Doug & Ann: 701/996-3111  
Bill, Karen, Katie & Whitney:  
701/996-3300  
midwayph@stellarnet.com  
Herdsman: Jake Burkhardtsmeier  
Visitors Always Welcome

### MRNAK HEREFORD RANCH

ANNUAL SALE Feb. 12, 2017 SALE IN  
BOWMAN, ND

14503 91st St. SW • Bowman, ND 58623  
Marlene 701/574-3124  
Wayne, Jill & Robyn 701/574-3172  
Terry & Andy 701/574-3193  
Brent & Jenna 701-206-0604  
www.mrnakherefords.com

### NORTH DAKOTA HEREFORD ASSN.

Joana Friesz  
Sec/Treas.



PO Box 67  
New Salem, ND 58563  
701/843-8750 • 701/400-8744 cell  
701/843-8744 work  
joana@northlandinsuranceagency.com

### OLSON Hereford Ranch

Carl, Lindsay, Casey, Dru & Stetson Olson  
16068 24th St SE • Argusville, ND 58005  
ranch: 701/484-5779 • cell: 701/361-0684  
Ed & Jeanne Olson • 701/238-3601

Red Power Bull Sale - Feb. 16, 2017  
www.olsonredpower.com  
E-mail: olsoncandc@aol.com

### PELTON POLLED HEREFORDS



We produce Polled Herefords  
for the Commercial Cowman

Craig 40 93rd Ave. NW  
Kayla & Kain Halliday, ND 58636  
cell: 701-260-0058 • 701-548-8243  
craigp@ndgateway.com

### Pollestad Herefords



4th Generation Hereford Breeder  
Spanning 89 years

Steven W. Pollestad 2525 92nd Ave. SW  
Ph. (701) 974-3970 Taylor, ND 58656  
E-mail: pollestad@ndsupernet.com

### Stroh HEREFORD RANCH

Over 50 years of Registered Herefords  
TONY & MIKE STROH

10550 Hwy. 200 Killdeer, ND 58640  
701/764-5217 701/573-4373

Annual Sale Feb. 2, 2017

### Winter Ranch

Quality Polled Hereford Cattle  
1990 10th St. NE  
Goodrich, ND 58444

Jason & Linda • 701-884-2424  
Kevin & Julie Bender • 701-884-2417



Visitors Always Welcome  
Stop Anytime



# SOUTH DAKOTA

... more South Dakota on next page

**BAKER**  
**HEREFORD RANCH**  
 P.O. Box 2769 • Rapid City, SD 57709  
**BULL SALE: Feb. 11, 2017**  
 Jim 605/923-2925 • 381-9519 cell  
 Jeff 605/923-5632 • 381-2444 cell  
 E-mail: jkbaker@rap.midco.net  
 www.bakerherefords.com

**JZ** Bar JZ Ranches  
 Homozygous Polled Herefords  
 Homozygous Polled Limousin  
 18542 326th Ave.  
 Holabird, SD 57540  
**Annual Production Sale**  
**Tuesday, Feb. 21, 2017**  
 Don/Peg/Seth Zilverberg  
 605/852-2966  
 web site: www.barjz.com  
 email: cattle@barjz.com

**DVORAK HEREFORDS**  
  
**LAKE ANDES, SD**  
 Richard & Darlene  
 Jeff & Tiphany 605/384-3914 Cell: 491-2068  
 Boyd & Jenni 605/487-7090 Cell: 491-7090

**EGGERS**  
**Southview Farm**  
 Tim & Philip Eggers  
 25748 S. 476th Ave.  
 Sioux Falls, SD 57104  
 (605) 351-5438  
 ESFherefords@aol.com  
**1-29 Bull Run**  
 Bull Sale March 11, 2017  
 Female & Frozen Edition Sept. 2017

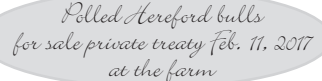
**FAWCETT'S**  
**ELM CREEK RANCH**  
 21115 344th Ave. • Ree Heights, SD 57371  
 Robert Fawcett  
 Keith, Cheryl, Matt & Erin: 605/870-0161  
 Daniel, Kari, Hollis & Ivy: 605/870-6172  
 Weston & Kristin Kusser: 605/478-0077  
 www.fawcettselmcreekranch.com  
**Bull & Female Sale • February 13, 2017**

**FINK**  
  
 Mike & Marvin Fink  
 P.O. Box 184 • 43610 SD Hwy 42  
 Bridgewater, SD 57319  
 Phone: (605) 729-2515  
 Cell Phone: (605) 999-2075  
 www.sites.google.com/site/finkpolledherefords  
 E-mail: swamprat@uniteltd.com

**FREDERICKSON RANCH**  
 **Pyramid Beef**   
**Bull Sale**  
 First Saturday in December  
 Mark & Mary Kay Nate & Jayna  
 Frederickson Frederickson  
 19975 Bear Ridge Rd. 605/254-4872 (cell)  
 Spearfish, SD 57783  
 605/642-2139 Shawn & Sarah  
 Tatman  
 320/808-6691 (cell) 307/673-4381

**Gant**  
 **Polled Herefords**   
 Box 15 • Geddes, South Dakota  
**Mark • Phone (605) 337-2340**  
**Dennis • Phone (605) 337-2564**  
 2 year-old Angus & Polled Hereford  
**BULL SALE**  
**February 24, 2017**  
 Geddes, SD

**Hanson's**  
**Polled Herefords**  
 Sherry Hanson  
 15477 409th Ave.  
 Conde, SD 57434  
 Cell: 605-382-7477  
 hanson\_herefords@hotmail.com


**HILLSVIEW FARMS**  
  
 Polled Hereford bulls  
 for sale private treaty Feb. 11, 2017  
 at the farm  
 Darwin & Cindy Aman  
 Andrew — Sam — Alex  
 32824 119th St. • Eureka, SD 57437  
 (605) 284-2721  
 dcaman@valleytel.net

**Hoffman**  
  
 HEREFORDS  
 Colin & Mary Beth Hoffman  
 (605) 439-3623  
**11341 357 Ave.**  
**Leola, SD 57456-7105**  
 Visit our website at  
 www.hoffmanherefords.com

➤ **HORA HEREFORDS** ◀  
 Suppliers of Show Cattle  
 Steers & Heifers  
 Jim & Karla Hora  
 27718 423rd Ave. • Parkston, SD 57366  
 (605) 928-3008 • Cell (605) 770-3008  
 E-mail: jhora@santel.net

**Early Bird**  
**Ad deadline for the**  
**OCTOBER issue**  
**is September 1**  
 (10% discount if all materials  
 are in by this date.)  
**Regular deadline is Sept. 5**

**K&B HEREFORDS**  
**& ANGUS**  
 17309 322nd Ave.  
 Onida, SD 57564  
 E-mail: kbherefords@venturecomm.net  
 Kirk: 605-973-2351 Cell: 769-9991  
 Brooke: 605-765-2248 Cell: 769-9992  
 Ken & Bonnie: 605-765-2335 Cell: 769-9999

**KLAGES**  
**HEREFORDS**  
  
 Quality seedstock  
 for sale  
 Jeff & Mary Klages  
 64090 410th St  
 Ortonville, MN 56278  
 ph/fax (320) 273-2163  
 jmkklages@fedtelirect.net

**Jerry Knippling**  
**and Sons**  
 Registered and Commercial Herefords  
**Internet bull sale on**  
**KnipplingCattle.com**  
 Gann Valley, SD 57341  
 Randy Garin  
 605/680-3185 605/680-4637

**LEDDY**  
 Horned - Polled and Red  
**HEREFORDS and ANGUS**  
 Using the Best A.I. Sires Available.  
 Bulls, Females and Club Calves For Sale.  
 GENE WADE & LORI  
 605/432-5182 REBECCA & ALLISON  
 Cell: 605/530-1659 605/432-9054  
 Cell: 949-0630  
 47296 153rd Street • Twin Brooks, SD 57269  
 Celebrating over 100 years in the same location  
 e-mail: wledddy@tnics.com

**Nuhsbaumer**  
**Herefords**  
 Steve, Amy & Casey  
 Zell, SD  
 (605) 450-0550 **Bulls for sale**  
 private treaty...  
 please call for more  
 information.  
 www.nuhsbaumerherefords.com  
 Visitors Welcome e-mail: sanuhs@nrctv.com  
 Directions: from Zell, 3 m. West on Hwy 212, 5 1/2 South

**OLLERICH BROTHERS**  
**HEREFORDS**  
 Over 45 years in the Registered Hereford Business  
 29188 303rd Ave  
 Clearfield, SD 57580  
 (605) 557-3246  
 www.ollerichbrothersherefords.com  
**Bulls For Sale Privately**  
**JEROME JAMES**

 **Home Raised**  
**First Cross Black Baldy**  
**Replacement Heifer Calves**  
**Top End Sell at**  
**Philip Livestock Auction**  
**the end of April**  
 Bill Parsons  
 19955 228th Ave.  
 Milesville, SD 57553  
 605-544-3247

 **RAUSCH**  
**HEREFORDS**  
 Hoven, SD 57450  
 Visitors Welcome  
**• Sale Third Mon. in February •**  
 Vern • Jerry • Shannon • Joel  
**Phone 1-800-6HEREFORD**  
**or 605/948-2146**  
 2 miles west of Hoven on Hwy. 20  
 e-mail: rauschherf@rauschherefords.com  
 Website: www.RauschHerefords.com

**Ravine Creek**  
**Ranch**  
  
 The Bischoffs  
 Huron, SD 57350  
**SALE MARCH 4, 2017**  
**• 605/352-5530 •**  
 E-mail: ravinecr@santel.net

**Schuette**  
  
**Land & Cattle Co., Inc.**  
 Raising quality commercial Hereford cattle for over 60 years.  
 Jim & Judy Schuette 605-852-2789  
 Jerry & Kathy Schuette 605-852-2046  
 PO Box 266 slc@venturecomm.net  
 Highmore, SD 57345 www.slc-herefords.com

**Simon Herefords**  
 Low maintenance, feed efficient Hereford cattle  
 Brian & Colleen Simon  
 Seneca, SD 57473  
 Home: 605/436-6725  
 Cell: 605/765-4564  
 bcsimon@venturecomm.net  
 www.simonherefords.com  
**Selling bulls & heifers private treaty.**

*South Dakota*  
*Hereford Association*  
 Mark and Jeanne Johnson, managers  
 South Dakota Hereford Association  
 46473 289th St.  
 Centerville, SD 57014  
 Jeanne.Johnson@yahoo.com  
 www.southdakotaherefords.org

**Ads for the**  
**OCTOBER issue**  
**MUST be in by**  
**September 5.**  
 E-mail:  
 jbh@herefordamerica.com

**Stenberg**  
**Herefords**  
 Dave & Audrey Stenberg  
 605/997-2594  
 Cell 605/530-6002  
 Cody Williams: 605/695-0931  
**Colman, SD**

**THORSTENSON**  
**Hereford Ranch**  
 30491 131st Street  
 Selby, South Dakota 57472  
 Bill & Paula • 605/649-7940  
 Darin & Danielle • 605/649-1972  
**• Sale April 9, 2016**  
 www.thorstensonherefordranch.com



... continued

## SOUTH DAKOTA

**THORSON HEREFORDS**  
 022  
 Doug and Nancy Thorson  
 22750 Cottonwood Road  
 Quinn, SD 57775  
 605-859-3538  
 we02much@gwtc.net  
 www.thorsonherefords.com  
 Visitors welcome at the Ranch

**Tricky's Herefords**  
 Dick & Betty Wettlaufer  
 (605) 485-2648 • Cell: (605) 270-3465  
 44132 234th St. • Winfred, SD 57076-7318  
 E-mail: rwettlaufer@triotel.net  
 www.Trickysherefords.com  
**BULL SALE • April 15, 2017 • Howard, SD**

**Wagner Herefords**  
 Reese & Elly Jo Wagner  
 39365 182nd St.  
 Redfield, SD 57469  
 Reese 605-450-1085  
 Elly Jo 605-450-9790  
 wagnerherefords.com  
**Bull Sale • Monday, March 20, 2017**

**POLLED HEREFORDS**  
 Since 1947  
*Bulls and Heifers for sale at the farm*  
**DEL & RUTH WOOD**  
**WOODCREST FARMS**  
 Cresbard, SD 57435  
 (605) 324-3289

## SERVICES

**A2Z PRINTING**  
 PO Box 35 701-523-4656  
 306 Hwy 12 W Ste C 888-768-4656  
 Bowman, ND 58623 Fax 701-523-4756  
 email: a2zprint@ndsupernet.com

**American Live Stock**  
 A MARKEL Insurance Company  
**Cheri & Jim Gies**  
 Cattle and Equine Insurance  
 19381 CR 74  
 Eaton, CO 80651  
 Tel/Fax (970) 454-3836  
 Cell (970) 590-0500  
 cmgies@msn.com

All work done by Cattlemen for Cattlemen  
**Cattlemen's Livestock Services**  
 Fence building and repair.  
 Corral building, pasture clearing, bulldozer,  
 backhoe services, livestock care, water lines  
 installed and barn building.  
 Pomona, KS  
 785-214-9532

**ZENS HEREFORDS**  
*Bulls, Heifers and Show Steers*  
*Private Treaty Sales*  
**Harley, Matt & Mark Zens**  
 Canova, SD 57321  
 Phone (605) 523-2655  
 Matt (605) 310-5782 cell  
 hrzens@yahoo.com  
 www.zensherefords.com

BEN ROUDABUSH Ph. 605-996-9100  
 Manager Fax 605-995-0611  
 broudabush@crinet.com  
**Genex**  
**Dakota Sire Service**  
 Semen Collection, Freezing, Shipping,  
 Storage, Sire Housing & Conditioning  
 40275 - 257th Street Mitchell, SD 57301

**HANDEL MARKETING, LLC**  
 Private Treaty Sales ♦ Ring Service ♦ Insurance  
 Order Buying and Selling Commercial &  
 Registered Breeding Stock & Feeder Cattle  
 Art & Pat Handel 605/391-8233  
 handelhereford@aol.com 1501 Summit Blvd.  
 www.arthandelscattle.com Rapid City, SD 57701

**HIGH PLAINS GENETICS, LLC**  
 For All Your  
 Equine & Bovine  
 Reproductive Needs  
 (605) 787-4808  
 www.high-plainsgenetics.com

**The Livestock Link**  
 Livestock Video Services & Video Sales • Photography  
 • Ranch Video Documentaries • Sale Clerking • Any Breed  
 For more information contact Marc Hotchkiss at 605/490-1513

**NORTHERN PLAINS Embryo Transfer Co.**  
 W.J. HINES, DVM  
 PO Box 1019  
 Martin, SD 57551  
 (605) 685-2074

**OLD WEST ULTRASOUND**  
 PO Box 1019  
 Martin, SD 57551  
 605-685-2074  
 Dan Hines Bill Hines, DVM  
 605-685-8222 605-685-5174  
 Providing Professional Carcass  
 Ultrasound to the Old West Region

**Keyher Embryonics**  
 7195 Thorpe Road  
 Belgrade, Montana 59714  
 Mark 406/539-4656  
 Jeanne 406/580-3490  
 reyherembryonics@aol.com

**Streamline GENETICS**  
 Your Hereford Headquarters!  
 Alex Cosgray Semen/Embryos/Flushes  
 Consulting/Marketing/Sales  
 765.490.6286 2704 N 300 E  
 Monticello, IN 47960  
 alex@streamlinegenetics.com streamlinegenetics.com

**Steer In Trailer Sales**  
 New & Used  
 Stock & Horse Trailers  
 Flatbeds - Mats  
 Cargo Trailers  
 Located at I-90 and Hwy. 287  
 (406) 285-4300  
 29 Bronco Drive Fax: (406) 285-4146  
 Three Forks, MT 59752 1-877-335-5372  
 www.steerin.com

**El Molino Sawmill**  
 P.O. Box 1106  
 Alto, NM 88312  
 Phone: 575/336-1237 • Cell: 575/808-0860  
 Email: elmolino@valornet.com  
 www.elmolinosawmill.com

## TEXAS

**Barber Ranch**  
 Barber Ranch 806-235-3692  
 Justin Barber 806-681-5528  
 Brett Barber 806-681-2457  
 Terri Barber 817-727-6107  
 Jason Barber 817-718-5821  
 Dale Barber 806-673-1965  
 Mary Barber 806-930-6917  
 10175 F.M. 3138 • Channing, TX 79018  
 barberranch@wildblue.net • www.barberranch.com

**PPHF**  
 "Prefix of Performance"  
**PRAUSE POLLED HEREFORD FARMS**  
 1957 Morris Community Rd.  
 Yoakum, TX 77995-5224  
 www.prausepolledherefords.com  
**Leslie & Gay Prause** **Robert, Lorna & Kaci Herman**  
 361-741-6495 361-293-5324  
 361-293-4213 361-293-1533

**Still River Ranch**  
 Where Marbling Matters  
 Larry Woodson  
 214-491-7017  
 larrywoodson@gmail.com  
 www.stillriverranch.com

**TRIPLE L RANCH**  
 BOBBY & JARED LIDE  
 714 FM 1366 • MEXIA, TX 76667  
 (P) 254.739.2911 • (CELL) 254.625.3800  
 JARED (CELL) 254.625.3806  
 www.triplelblackherefords.com



## UTAH

### Ekker Herefords

Jim Ekker Cell #  
435/839-3454 435/840-2699



1004 Ekker Lane • Vernon, UT 84080  
~ Bulls & Females for Sale ~

**Breeding Quality  
Herefords Since 1985**

*Line One  
performance bred Herefords*  
www.johansenherefords.com

Castle Dale, UT  
Jonathan 435-650-8466  
Craig 435-820-8490



## WASHINGTON



### CX Ranch

Bill and Terrilie Cox  
688 Pataha St.  
Pomeroy, WA 99347

509-566-7050 cell  
cxranch@live.com

Dick & Karen Yoder  
8941 Glendale Rd.  
Custer, WA 98240  
(360) 354-2945

Dale & Tammy Yoder  
Katie & Clark  
9279 Weidkamp Road  
Lynden, WA 98264  
(360) 354-6605

**Yoricka  
Farm, Inc.**  
Registered Herefords

email: YorickaFm@aol.com

## WISCONSIN

### HUTH POLLED HEREFORDS

Jerry and Maryann Huth  
W9096 Co. Trunk AS  
Oakfield, WI 53065  
(920) 583-3223  
huth@wildblue.net • www.huthcattle.com



KEVIN L. STORK  
KODY L. STORK  
626 EAST THIRD  
NEW RICHMOND, WI 54017

(715) 381-3770 Kevin  
(715) 220-0021 Kody  
(715) 246-2580 fax

E-mail: kstork@pressenter.com

### LIETZAU HEREFORD FARM

Harold & Connie Lietzau  
Tammy, Dan, Kiara & Austin  
Troy, Michelle, Jaydon, Devon & Jocelyn  
Taylor & Ty  
7477 Iband Ave. • Sparta, WI 54656  
Cell 608/633-2875



MARVIN ESPENSCHIED FAMILY

(608) 543-3778 12044 State Hwy 78  
Fax: (608) 543-3824 Argyle, WI 53504  
Email: wlbaosf@mhtc.net

*Thanks to our customers!*

*Wisconsin. Wisconsin?  
Contact Jill to place a  
Wisconsin card ad.  
jbb@herefordamerica.com*

## The Livestock Link

Livestock Video Services & Video Sales • Photography  
• Ranch Video Documentaries • Sale Clerking • Any Breed  
For more information contact Marc Hotchkiss at 605/490-1513

### WIRTH Herefords

NEW RICHMOND, WI

Gene & Cheryl Wirth  
(715) 247-5217

Lance Brent  
(715) 377-6876 (715) 760-1727  
www.wirthshowcattle.com

## WYOMING

### The Berry's WHERE COWMEN BUY BULLS

Bull Sale October 17, 2016

Jay and Janice Berry  
3049 County Road 225  
Cheyenne, WY 82009  
(307) 634-5178

E-mail: jaberryherefords@msn.com  
www.WhereCowmenBuyBulls.com



**LARGENT  
and SONS**  
Hereford Cattle  
Since 1902

• Sale November 2016 •

P.O. Box 66 • Kaycee, WY 82639  
(307) 738-2443 or (307) 267-3229  
www.largentandsons.com  
largentandsons@yahoo.com

### McClun's Lazy JM Ranch

Producing problem free  
Polled Herefords and Angus.

**SALE April 13, 2017**  
Private treaty sales any time.

Jim & Jerri McClun  
1929 Road 60 • Veteran, WY 82243  
Ph. 307-837-2524

Jeff & Kari McClun  
1930 Road 60 • Veteran, WY 82243  
Ph. 307-837-2554 • jkmcclun@wyomail.com

### MIDDLESWARTH RANCH

Registered Herefords  
• Torrington, WY •

Jay, Marsha and Jessica  
307.532.5427

6MBulls@hughes.net  
www.middleswarthherefords.com

### GEORGE OCHSNER RANCH INC. PRIVATE TREATY SALES OF HEREFORD AND ANGUS BULLS REGISTERED AND COMMERCIAL BRED HEIFERS QUALITYBULLS.COM

GEORGE & RUBY OCHSNER  
307/532-5892

E-MAIL: OCHSNERRANCH@GMAIL.COM

Blake & Rustin & Steve & Rod & Debbie  
Chrissy Britte Roth Dixie Roth Ochsner  
Ochsner 307/575-2709 307/532-7191 307/532-2457  
307/532-3282

## HEREFORD America

605/866-4495

www.herefordamerica.com

### STICKS & STONES RANCH

• Gene & Cindy Stillahn and Family •  
Christopher, Amy and Trey

3902 County Road 203  
Cheyenne, WY 82007  
(307) 635-6716 • cell (307) 421-1592  
E-mail: gcstick@millect.com

### THE NED & JAN WARD QUALITY PROGRAM

...honest, efficient and predictable Polled Herefords.

Ned, Jan & Bell Ward  
247A Decker Road • Sheridan, WY 82801  
Phone and Fax 307/672-3248

Ned (c) 307/751-8298 • Jan (c) 307/751-9470

Email: njwardherefords@gmail.com

www.NJWHerefords.com

Annual BULL SALE in March

Bulls • Females • Semen • Embryos

### S.E. West & Sons • Herefords since 1949 •

Selling Private Treaty and at  
Black Hills Stock Show  
Nebraska Cattleman's Classic  
Bulls & Females • Club Calves

Lusk, Wyoming  
Brett 307/334-2546



Joel & Karri White

912 Fullerton Avenue  
Buffalo, WY 82834

C: 307.217.0367 H: 307.684-7881  
whitecattlecompany@gmail.com

Bulls, Females, Embryos & Semen  
Available



*Starts the  
second Saturday  
of August  
every year.*

307/358-2398

wystatefair.com

wsf@netcommander.com

(Supported by Converse County Tourism.com)



# Hereford Fall Classic

Saturday, September 10, 2016

12:30 p.m. (CST)

*At the Stephens Hereford Farm, near Taylorville, IL*

**Selling: Elite Heifers • Breds • Cow-Calf Pairs • Pick of Bulls • Embryos/Pregnancies**



*NJW 73S 980 Hutton 109Z ET  
x CH Tuff Lady 567*



*Crane Test of Time 2311 ET  
x Crane Stylish 857*



*SR Right On 2203 Z ET  
x Bar-S LHF Ms 2203 601*



*BCC Billy the Kid 330A  
x CL 1 Dominette 617S*



*C ETF Wildcat 4248 ET  
x Churchill Lady 0104X*



*NJW 98S R117 Ribeye 88X ET  
x Bar-S SOF Ms 477 802*

**Stephens  
and  
Loehr** Herefords

Mark 217-825-7913  
Pete 309-264-7280

**Crane  
Herefords**

Chad 815-712-5739  
Floyd 815-712-5735

Guest Consignors:  
Steve Cole  
Jennings Land & Cattle

More information and videos available at [www.herefordfallclassic.com](http://www.herefordfallclassic.com)