



The Largest Privately Owned Hereford Newspaper in North America

The one that's read "from cover to cover." • Visit us on the web at: www.herefordamerica.com

Serving Commercial Cattlemen & Registered Hereford Breeders

Published by: Hereford America, Inc. • 13823 Beaver Creek Place • Reva, SD 57651

October 2015

Vol. 19., No. 9

Editorial Comments...

Jill Bayers Hotchkiss



Jill Hotchkiss

Congratulations once again to the South Dakota Hereford Association who successfully served over 9,630 Certified Hereford Beef ribeye steak sandwiches at DakotaFest in Mitchell, SD.

This is a tremendous feat and I'm so glad each year we are able to brag on the South Dakota Hereford breeders. This is truly a collaborative effort and couldn't be accomplished without major involvement by the breeders.

Phil Eggers, SDHA manager, says there was good support from Here-

(continued on page 7)

Byron Bayers



Byron Bayers

I want to begin the editorial by thanking all of you for your support and condolences at the passing of Pauline. This has been a long battle but I know other folks have had to go through trying times similar to ours. You grieve but you go on!

The **American Hereford Association** has a new leader in **Jack Ward**. In some ways I am not sure I should just say, a new leader, because for the last nearly 12 years Jack has taken on a big share of the Hereford breed business. I am not sure in my own mind what total responsibility Jack had as COO, but I would as-

(continued on page 3)

Fall Roundup Time in the West



Family Affair – Sharon and Les Longwood, who raise registered and commercial Herefords north of Bison, SD, rounding up their steers with son-in-law Jeremy and daughter Carrie (Longwood) Stadheim, Reeder, ND, and their children.

Same Input, More Output: Heterosis and the Baldy Jenkins Operation Identifies Critical Issues

By Mary Ridder

Whether you talk about heterosis for the cow-calf operator or terminal heterosis for cow-calf and feedlot operations, crossbreeding and heterosis are a big deal. "Heterosis is absolutely critical to an operation," observed Jeremy Martin, Ph.D., Nutritionist with Great Plains Livestock Consulting, Inc.. Not only does Martin consult with a wide variety of cattle operations, he also walks the talk. He and his wife own and operate a family seedstock, ranch and feedlot business between Hershey and Sutherland, NE. They are also a partner in a Lexington area feedyard.

"There are a lot of different programs (using) different breeds. The main thing," he said, "is to have a crossbreeding program to capture

some of that heterosis from both the paternal and maternal end." Martin gives this example. "If you buy a black steer, he probably has Angus in him, you have no idea beyond that," he said. "He may be purebred Angus which may not be the best option for the feeder. When you get those baldies, they're distinctly marked, they're obviously crossbred."

Martin said all of a feeder's cattle may come in at about the same size, but when spring comes the crossbreds are "bigger, stouter, better doing cattle." These baldy crossbreds are a good fit in Jim Jenkins' program. Jenkins and his brother Stuart operate partnerships



Baldies are a good fit in the Jenkins program.

where they rotational graze and run stocker and yearling cattle, and in the process feed on approximately 400 pounds. In the past they had a cow-calf operation, as well.

"The black baldies coming in year after year perform better," he said. Jenkins' order buyers purchase black cattle, quite a few Red Angus, Charolais crossed cattle, and the Hereford influenced black baldies. "Clearly," he said, "that heterosis seems to be having a good effect when you look at the quality of those cattle."

Jenkins and Martin together drive

(continued on page 4)

Sales & Events

CALENDAR

October

- 3 Colyer Herefords
Fall Female Sale
Bruneau, ID
- 4 Genetic Selection X Sale
Spring Valley, WI
- 5 Melcher Herefords
Private Treaty
Bred Heifer Sale
Page, NE
- 8 Dudley Bros. Bull Sale
Comanche, TX
- 10 Iron Clad Genetics II Sale
Athens, TX
- 15 Jensen Online Heifer Sale
- 16 Hereford Harvest Sale
Vibank, SK
- 17 ANL Polled Herefords
& Guests Production Sale
Steelman, SK
- 17 C&T Cattle Co. & Guests
Take the Next Step Sale
ANL Facility, Kisbey, SK

- 18 Blair-Athol, Haroldsons
& Friends Sale
Arcola, SK
- 19 Faith Livestock Hereford
Influence Heifer/Steer Sale
Faith, SD
- 19 The Berry's Bull Sale
Cheyenne, WY
- 20 Strang Herefords &
Black Angus Sale
Meeker, CO
- 24 JBN Livestock Complete
Dispersion Sale
St. Onge, SD
- 24 Section 7 Ranch
Complete Dispersal
Whitewood, SK

November

- 1 Pick of the Crop Special
Female Sale, TNT Angus and
Carter's Polled Herefords
Rocklake, ND

- 6 Jamison Ranch Sale
Quinter, KS
- 9 Mohican West Bull Sale
Laurel, MT
- 10 Bowling Ranch
Production Sale
Newkirk, OK
- 10 Raap Hereford Ranch
Commercial Bred Heifer Sale
Pierpont, SD
- 13 SD Hereford Assn. Annual
Meeting & Banquet
Brookings, SD
- 14 SD Excellence Sale
Brookings, SD
- 14 ABHA National Heifer Sale
Emporia, KS
- 15 MCM "No Holds" Online Sale
- 18 Montana Hereford Assn.
Feeder Calf Sale
Three Forks, MT

- 19 Largent & Sons Bull Sale
Kaycee, WY
- 19 2015 Mrnak Advantage
Female Sale
Bowman, ND
- 21 Fenton Hereford Ranch Sale
Irma, AB
- 28 College of the Ozarks
Production Sale
Point Lookout, MO

December

- 3-5 Western Nugget Show/Sale
Reno, NV
- 4 Knoll Crest Bull Sale
Red House, VA
- 5 Pyramid Beef Sale
St. Onge, SD
- 11 Minnesota Hereford Breeders
Annual Meeting
Hutchinson, MN
- 12 GoPher the Purple Sale
Hutchinson, MN

Subscribe Now!

DON'T MISS AN ISSUE!

Canadian & Foreign subscriptions —

\$30 U.S. funds, one year

\$55 U.S. funds, two years

U.S. subscriptions —

\$20 - one year, third class

\$30 - one year, first class

\$35 - two years, third class

\$55 - two years 1st class

(Advertisers placing \$150 or more in advertising for the season will receive a free first class subscription.)

Please let us know if we need to **correct** your address or if your local post office has started using "911 Locator" addresses.

Note: When submitting an address we need to have 3 lines including a PO Box, Route or Street for the second line. Thanks!

Send new or corrected address to:

Hereford America

13823 Beaver Creek Place

Reva, SD 57651

Credit Card Payments

You may pay your subscription or advertising bill online by credit card through our website or by calling us with your credit card information.

Your subscription expiration date is printed above your name on the front page label area. If you wish to receive your paper in a more timely manner or live in a southern state please consider a first class subscription for faster postal delivery.

For questions call Marc Hotchkiss at 605/866-4495.

If your address changes please be sure to notify us.

Name

Address

City

State Zip

Phone E-mail

Commercial Breeder Registered Hereford Breeder

Registered Breeder, Other Breed Other

Polled

Horned

Both

Signature

October 2015

(Required for Post Office Regulations)

The official Hereford publication for the states of
South Dakota, North Dakota, Wyoming & Minnesota.

HEREFORD AMERICA

605/866-4495

WWW.HEREFORDAMERICA.COM

Main Office:
13823 Beaver Creek Place, Reva, SD 57651 • Fax: 605/866-4494

PUBLISHED 7 TIMES A YEAR:
SEPTEMBER-APRIL/MAY

(Nov/Dec is a combined issue)

by Hereford America, Inc., a family owned & operated business.
Jill and Marc Hotchkiss • Byron Bayers • Taylor Vroman

Jill Hotchkiss - jbh@herefordamerica.com • Cell: 605/490-1409

Marc Hotchkiss - marc@herefordamerica.com • Cell: 605/490-1513

Byron Bayers - bayers@3rivers.net

Byron's Phone: 406/684-5465 • Fax: 406/684-5499

Editors: Jill Hotchkiss, Byron Bayers

Ad Design/ Production: Robin Engel, Jill Hotchkiss

Writers: Byron Bayers, Jill Hotchkiss, B. Lynn Gordon
Mary Ridder, Heather Hamilton Maude, Maddee Moore

Editorial Assistant: Taylor Vroman

Proofreaders: June Hotchkiss, Taylor Vroman

Video Production & Website Development: Marc Hotchkiss, Taylor Vroman,
Jill Hotchkiss, Robin Engel

Opinions expressed by our editors, columnists, letters to the editor or other writers or news sources are not necessarily those of the management. We welcome your comments, ideas, suggestions and letters to the editor. All correspondence (including e-mails) must be signed or must clearly identify the name of the author. Hereford America shall not be liable for slight changes or typographical errors that lessen the value of an advertisement. Hereford America's liability for errors or omissions in connection with an advertisement is strictly limited to publication of the advertisement in any subsequent issue or the refund of any monies paid for the advertisement. Advertising placed after deadline must be approved by the Editors. All materials for such advertising must be in by date specified by Editor. Late charges may apply. If an ad is placed and all materials are not received by date needed all attempts will be made to compile the ad from available materials. Any cancellations after deadline are subject to full charges for the ad. Hereford America reserves the right to refuse advertising to anyone. All contents Copyright 2015 by Hereford America, Inc., except Trademarks and Copyrights otherwise noted in which Hereford America, Inc. disclaims any proprietary interest.

Byron's Editorial...

(continued from page 1)

sume what we have seen being done, in the Hereford industry, is that Jack was involved in nearly every major change in the association business. With all of Jack's involvement as COO, I sometimes wonder what that other fella that went to the horse group was doing with the operation of the AHA. During the time that Jack has been involved with the AHA we have seen a continual improvement in the popularity of the breed and I think that many of the changes he has helped formulate have been a great improvement. I know that the change in pricing of BEEF in the industry, has been a major factor, because that has helped all of the people in the commercial industry and they have had a chance to make a profit in the last few years, and without the commercial breeders demanding good Hereford bulls, our industry would falter.

Several breeders called me for my opinion, when the board, and the special committee was named, to search for the new EVP of the AHA. I told each of these people that I thought Jack Ward should be put in without any question, because he had basically been running the operation for a number of years. Most of these agreed with me, but I did have a couple of my friends that are Hereford breeders who felt the committee should search the field for someone who could come in to the AHA, and bring in new ideas and challenges that we may have not had in the past. My opinion at the time, and it has not changed, was that bringing somebody in new and untested, would create a whole series of doubts to the breeders and the board of directors, as to what way the new person would take us.

I think the board was already comfortable with the choice that they would ultimately make in the next month or so, but I surmised that the board felt that they needed to be politically correct in opening the job up to other individuals. I have always said that a person holding an executive job should have gone through the trials of that industry, so that they know what all phases of what that industry is about.

I know that Jack has actually calved out cows and I wonder if any of the three precursors of Jack has ever calved a cow out. I know that many people think that Jack is an Angus man, that is true, but I think we need to look at where the Angus breed is now. I also know that Jack tried to get the head job at the Angus Association a few years ago.

So does this really matter if this man has had a big share of his experience with Angus cattle, because he is obviously a good cattle man, a good judge of cattle and has already proven that he can bring good changes to the Hereford breed. I also know he is a man of integrity, he says it like it is! I have faith in the AHA board that they have made a good decision in hiring Jack Ward, and I think as time goes on the board will

feel very comfortable in that decision.

Some of Jack's detractors need to take a long look at any problems they have had, or feel like they have problems that need to be re-considered... I feel very strongly as a former President with the AHA that you have to sincerely listen to your people, and I'm talking about all of the breeders in the industry, because they are the industry and without the breeders, we would not have a Hereford industry.

I would hope that Jack will give each of these people that may have been detractors, the time, and listen to them, and the give them the reason the follow him. And to Jack I know that this lays a lot on your shoulders, but it will mean a lot to your tenure as EVP if you will just listen to your constituents. I am not saying that you always have to agree with them, but you do need to listen. Jack, you have taken on a big job, and I am very confident that you are very capable of it and I wish you much suc-

cess, which will also mean success for the Hereford industry.

I do have an emotional thing to say about Jack Ward. Approximately seven years ago, I had a major stroke, which had a debilitating effect on my life. Jack was the only person who was employed by the AHA at that time that was kind enough, and gracious enough to send me a nice get well card. To many people this might seem like a small thing, but to me in that stage of life and in that condition, the card from Jack was monumental to me.

A very interesting article in *Beef Magazine* appeared the August 2015 edition. It was titled "Across-breed EPD Updates", it was written by Larry Kuehn and Mark Thallman, who are geneticists at the US Animal Research Center generally known as MARC. One of the comments made by the authors was that across-breed EPDs are most useful to commercial producers using more than one breed, to buy bulls

to use their crossbreeding program.

I have had many discussions with a geneticist at Fort Keogh in Miles City, through the years about this subject because many commercial breeders through the years have tried to compare EPDs from one breed to another and have ended up totally confused. I was informed by a geneticist at Fort Keogh, several years ago that even though they tried to set a basis for all breeds that it was something that was nearly impossible to do. I have studied this article and read it several times and the authors of the article show adjustment factors for EPDs of 18 different breeds to estimate cross breed EPDs, and the article goes on the tell the reader how they can make adjustments between breeds. For many of you people in the Hereford breed who think you know EPDs well, I would like to have you look this article up and try to analyze it in your minds how this can be sold to the commercial industry. To

(continued on page 4)



Volume Selection

Older high-performance bulls make the yearling bull offering.
Younger high-performance bulls make the two-year-old bull offerings and the other 2/3 of the bull calf crop go to the feedlots for more data collection.

Don't worry someday a caring customer will want to take you along home.

Rely on a Rausch bull in your next Breeding Season
Over 200 Bulls and 300 females from the top of the herd For Sale Annually.
Check out RauschHerefords.com for this year's pasture videos and pictures of sire progeny.

Check out our home page for our marketing programs www.RauschHerefords.com
E-mail: rauschherf@rauschherefords.com
 Please call, write or e-mail for more information:
RauschHerefords.com
 14831 Hereford Road • Hoven, SD 57450
(605) 948-2146 or 2157 or 2375
 Jerry Shannon Vern & Joel
www.RauschHerefords.com
 Located 2 miles west of Hoven on Hwy. 20 and 47




35th Anniversary
Dams
 OF DISTINCTION
 America's No. 1 Dams of distinction herd. (Based on efficiency.)

Advertisers Index

ABHA	21
Anchor Polled Herefords	8
Berrys, The	10
Blue Creek	7
Bowling Ranch	14
Carmichael Herefords	18
College of the Ozarks	12
Feddes Herefords	5
Fenton Herefords	13
JBN Livestock	36
Jamison Herefords	9
Jensen Bros.	4
Knoll Crest Farms	11
Largent & Sons	19
MCM Herefords	16
McClun's Lazy JM Ranch	18
Mohican Bull Sale	15
Mrnak Herefords	7
Raap Hereford Ranch	25
Rausch Herefords	3
Reyher Embryonics	18
Strang Herefords	17
TNT & Carters	20
Triple L Black Herefords	6

Byron's Editorial...

(continued from page 3)

quote the article, "The breed differences used to calculate the factors are based on comparisons of progeny of sires from each of these breeds in the Germplasm Evaluation program at MARC." This is a very interesting statement and I would like to know where MARC obtained the sires in each bred and how this evaluation of obtaining the sires was accomplished. The fact that I was told, probably 10 years ago, that this particular adjustment was nearly impossible to make has made me want to learn more about how MARC and their geneticists have put their program together. Because crossbreeding has become such an important tool to so many commercial breeders in the U.S. and many other parts of the world it would be very interesting to me to hear from our own geneticists at the AHA, about the interpretation that they have with this article and its effects on the commercial industry.

The fall sale season is on its way and a huge number of fine females will have either been sold by the time you read this or will be sold soon. The Hereford female market seems to be hot at this time and I will look forward to seeing how the market proves out during the current stock market erratic fluctuations. Buying a cow for your herd is a an important long term investment, so I can't believe that if you are looking at a 5-10 year result, your current investment in a cow should not change too much just because of the stock market being erratic.

So long for now. — BB

Jenkins and Martin...

(continued from page 1)

through the cattle about once a month. "Jeremy made the comment," Jenkins said, that "people should come out and drive through this herd to understand the benefit of heterosis. We're buying large numbers. When we had our western ranches we were running over 3,000 head. Last year we had 1,500 head." And what Jenkins is seeing is an obviously superior black baldy animal.

"We would buy more black baldy cattle, but there's not as many out there as you would think," he said. Or, he added, it may be that they're in a higher price range due to their higher quality. "We've bought higher quality cattle the last couple years that can really make our customers happy."

What the Harris Ranch Project Told Us

The Harris Ranch project in California was conceived to compare and contrast Hereford and Angus/black bulls in a commercial ranch setting, paying particular attention to the outcomes at every critical juncture: ranch, feedlot and packing plant. The project collected data on weaning and feedlot performance, on carcass value and on profitability as a whole.

In year one, 400 Angus/black cows were randomly bred to 10 Angus/black bulls and 10 Hereford bulls. Years two and three saw 600 cows bred to 15 black

bulls and 15 Hereford bulls, again with random matings. The results?

In at least 2 of the 3 years, consistent advantages, from slight to large, were found in favor of the Hereford-sired

(continued on page 6)



Jeremy Martin (left) and Jim Jenkins realize the importance of heterosis and lower inputs from baldies.

Jensen Bros.
ONLINE HEIFER SALE
10.15.15

Selling 15 Spring Show Heifers and IVF Embryo matings featuring Herdsire R Leader 6964

319X

236X

females built with a solid foundation

Leader

909

88X/236X

167X

27AS

Congratulations Brooke
Reserve Sr. Showman, Walter & Joe Lewis Award, New NJHA Board Director

Consignors

SULLIVAN FARMS - John Sullivan 712-263-0263

CK CATTLE - Chris Effling 605-769-0142

LITTAU POLLED HEREFORDS - Sam Littau - 580-525-1155

Look for us on **smartauctions.co**

Dustin Layton 405-464-2455

JENSEN BROS.
www.jensenbros.net jensenks@courtland.net

Courtland, KS
785-374-4372 Kevin 785-243-6397
Sheila 785-262-1116 Brady 785-614-1645
Herdsman: Eddie Sandberg 765-490-1719

Modest Birth ♦ Massive Meat

For Sale Privately: 100 bull calves ♦ select heifers



F York 531 York x 4140P BW 92
Muscular heavyweight from a goggle-eyed cow.
14 sons of York for sale.



F 032X Domino 592 032X x 157K BW 78
A standout. Straight horned pedigree. Eye-catching design.
14 sons of CL 1 Domino 032X for sale.



F X51 Revolution 535 X51 x T32 BW 84
Quality, pounds, and exceptional ribeye genetics.
13 sons of X51 for sale.



F Hometown 544 10Y x 5216 BW 88
Loads of eye appeal, backed by a beautiful mother (below).
See many other mothers and bulls at feddes.com



F Hometown 514 10Y x 5216 BW 82
Powerhouse herd sire prospect. Very deep-sided and beefy.
30 sons of National Champion 10Y for sale.



Feddes Herefords

Tim 406.570.4771
tfeddes@msn.com
Marvin

Dan 406.570.1602
2009 Churchill Road
Manhattan, MT 59741

Our sale is any time you want. All our cattle sell privately.
See many cattle for sale plus their sires and mothers at:

www.feddes.com

All calves raised on mother's milk and grass.

Jenkins and Martin...

(continued from page 4)

calves for pre-weaning performance, backgrounding performance, average daily gain (ADG), feed conversion, cost of gain, death loss, economic performance, overall net return and pregnancy rates. Only in carcass performance did the Angus/black-sired calves outperform the Herefords.

— Feed Efficiency — Generate More with Less

These findings tie in well with the direction Jenkins sees the beef industry heading. "Utilizing feed more efficiently is where it's at," he stated. "Sooner or later this industry is going to have to be tracking more closely all the way through. People up and down the value chain, while they're starting to work together, are pretty disconnected. That ultimately hurts

the restaurant and the retailer." Jenkins should know. He's started and operated restaurants including the Whiskey Creek restaurants, and is currently an owner of the Skeeter Barnes restaurants.

"Those cattle as compared with straight blacks, those cattle with a shot of Hereford, obviously crossbred, they're a better deal for the yearling man, for the feedlot."

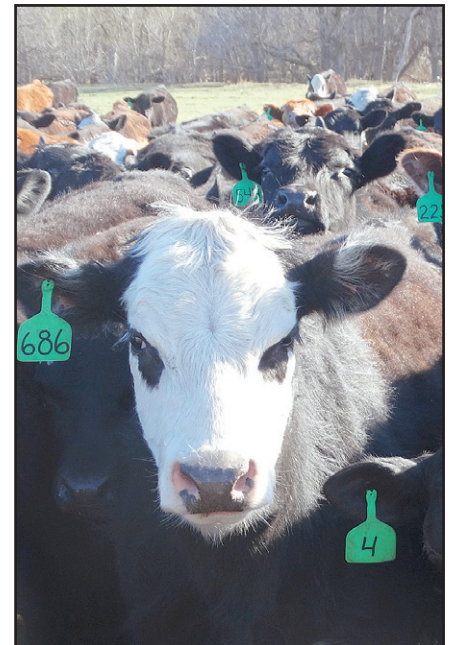
The nutritionist Martin also said that, anecdotally, black baldies excel. "Every time we look through those cattle, maybe not in November or December, but you get into late winter and spring, those baldy cattle...they just excel. You can pick them out. Those cattle as compared with straight blacks, those cattle with a



shot of Hereford, obviously crossbred, they're a better deal for the yearling man, for the feedlot. They generate more with the same input."

Jenkins points to economic areas of

feed conversion and growth as key. "We've got a new feedlot software that we're going to use for tracking, trying to get more and better data all the time. Feed," he stated, "is such a huge deal. If you think about the amount of feed going into cattle, it's easily 50 to 60% of your costs. That feed conversion is the most important piece."



South Dakota Hereford Association Heifer Grant Program

The South Dakota Hereford Association is offering grants to youth who apply and are chosen to receive them, for use at the SD Excellence Sale on November 14. The sale is held in conjunction with the SDHA Annual Meeting and Banquet (Nov. 13) in Brookings, SD. It's a great Hereford weekend and everyone is welcome!

Applications available at:
www.southdakotaherefords.org

Mail to SDHA by November 1, 2015:
SD Hereford Association
Phil Eggers
25748 476th Ave.
Sioux Falls, SD 57104
Cell: 605-351-5438
ESFherefords@aol.com



TRIPLE L RANCH

— Black Herefords —
The Best of Both Worlds

**Cattle for sale
at the ranch and in
The
Black Hereford Sale
March 12, 2016
in Waxahatchie.**

*Low birth weight, high growth cattle that
work well in any crossbreeding program.*



Dexter
Black Hereford sire



Churchill ILR Domino 1251Y ET
Foundation Hereford Sire by
CL 1 Domino 955W



**Brahman x Black Hereford
Heifer**

We produce the best by breeding the best!

For more information call, text or e-mail:

TRIPLE L RANCH

VIDEOS online at: www.TripleLBlackHerefords.com

BOBBY & JARED LIDE
714 FM 1366
Mexia, TX 76667
Ranch: 254/739-5311
Bobby (cell) 254/625-3800
Jared (cell) 254/625-3806

Founding Member of the
World Black Hereford
Association.

wbha
World Black Hereford Association



Jill's Editorial...

(continued from page 1)

ford breeders with 25 who worked at the booth this year. What's amazing is there are helpers all the way from about 7 years old to well, let's just say at least 10 times 7! This is an event that brings the state's Hereford breeders together to work for a common goal. While the immediate goal is to raise money for Hereford events throughout the year, it ends up being a tremendous promotional tool for Hereford beef. Way to go South Dakota!



What a great picture of little Dave enjoying his ribeye steak sandwich at DakotaFest. Photo by Mary Janet Barz.

Speaking of associations, I want to express my support of Jack Ward being selected as the new Executive Vice President of the American Hereford Association (AHA). Like my dad, Byron, I feel like this was a good selection. I too, had several calls from friends asking what I thought of Jack as the potential heir apparent to the top job. While several of them expressed concern over Jack's Angus background, I had to remind them of his dedication and time he has put into the AHA. Being the Director of Breed Improvement for 12 years was an excellent proving ground for Jack. He has the practical experience of raising livestock along with the practical experience of being Chief Operation Officer and dealing with breeders for 12 years. To me it didn't make much sense to select someone who was not familiar with the organization and besides that, Jack is highly qualified for the job.

I realize several of you have probably bumped heads with him at times. Anyone in the association who deals with EPDs seems to get a target on their back in regard to breeders who have had issues. I think that just comes with the territory.

About 10 years ago when Marc and I were still managing the South Dakota Hereford Association, we invited Jack to be a speaker at the SDHA's annual meeting held in the afternoon. Back then there were a few genetic abnormality

(continued on page 8)



BLUE CREEK LIVESTOCK CO.
Oshkosh, Nebraska

PRIVATE TREATY HEIFERS FOR SALE

- * 150 head of registered 2nd and 3rd calf heifers from the country's best breeders.
- * 200 head of commercial 1st calf heifers.
- * 300 head of commercial 2nd calf heifers.
- * 150 head of commercial 3rd calf cows.

All start calving March 15th-May 15th.

All bred to low birth weight registered bulls.

Some groups are bred all Hereford and some bred all black Angus.

All cattle come from top registered breeders such as Van Newkirk, Rausch, Upstream, Mrnak and Hoffman.

For more information call:

Greg Polk
308-778-6520

Art Handel
605-391-8233

Mark Your Calendars!



Mark your calendars for the 2015 Mrnak Advantage Female Sale in Bowman, ND. This year's offering of Donor Females and Yearling Bred Heifers has been designed to provide a selection of Mrnak Hereford Genetics straight from the heart of the herd. Additionally, a strict selection of commercial baldy, black, and Hereford bred heifers offer a tremendous balance of some of the best Mrnak Genetics on the market. For a catalog or more information, contact anyone at the Mrnak Hereford Ranch or stop in anytime for a preview of this outstanding offering!

Mrnak Hereford Ranch 2015 Mrnak Advantage Female Sale

Thursday, November 19, 2015

1:00 p.m. (MT)

Bowman, North Dakota

Offering 300 Females:

25 Proven Dams and Donor Females

80 Registered Bred Heifers

And Commercial Bred Heifers Representing
Mrnak Advantage Genetics



Wayne Mrnak • 701.523.6368
Terry Mrnak • 701.523.6386
Brent Mrnak • 701.206.0604
Andy Mrnak • 701.206.1095

Mrnak Hereford Ranch: 14501 91st St. SW • Bowman, ND 58623

View more information at
www.mrnakherefords.com

Jill's Editorial...

(continued from page 7)

issues going on and needless to say, it was a hot topic of conversation. When Jack arrived in the barn at Brookings, he had sort of a deer-in-the-headlights look, when several breeders greeted him. He soon found out that he really was welcomed by our group and they just wanted to visit with him and find solutions. While I felt for him being thrown into this position at our meeting, I was impressed with the way he handled himself and spoke to people, giving them practical information and advice.

I have high hopes as he leads our breed into the future. If he has stayed with the AHA for 12 years, he certainly has a great deal of allegiance to the association as well as being talented, intelligent and personable.

Since Jack served as both Director of Breed Improvement and Chief Operating Officer, he was immersed in several important aspects of the association and was obviously well-educated on EPDs. The note he left on his desk as he transitioned to his new job sums up the EPD quest well. It read, "EPDs are like a Skill Saw — used properly they vastly improve your ability to build the end product BUT if used improperly can cause a real wreck."

Certainly words of wisdom, for his successor but also insight into his work of the past several years. Good luck in your new position, Jack.

I'd like to make just a few comments about the across-breed EPDs that dad references in his editorial.

For years the Beef Improvement Federation as well as several other entities have promoted across-breed EPDs developed primarily by the Meat Animal

Research Center (MARC) in Clay Center, NE. I remember attending a BIF meeting in the early '90s where the subject was discussed, and probably cussed a little bit too, in which researches presented their information to a large crowd. At that time there were several groups, including breed associations, who had come up with formulas which were quite different from each other. A lot has changed since then.

According to MARC researchers doctors Larry Kuehn and Richard Thallman, "Across-breed adjustment factors have been calculated for growth traits and maternal milk since 1993. Adjustment factors for carcass traits have been calculated since 2009; to be included, breeds must have carcass data in the U.S. Meat Animal Research Center (USMARC) database and report their carcass EPDs on an actual carcass basis using an age-adjusted endpoint. Bulls of different breeds can be compared on the same EPD scale by adding the appropriate adjustment factor to the EPDs produced in the most recent genetic evaluations for each of the 18 breeds. The AB-EPDs are most useful to commercial producers purchasing bulls of more than one breed to use in crossbreeding programs. For example, in terminal crossbreeding systems, AB-EPDs can be used to identify bulls in different breeds with high growth potential or favorable carcass characteristics."

I have no doubt that Kuehn and Thallman are brilliant researchers. I know Kuehn's parents and they are both very intelligent people so I'm guessing his genetic probability for intelligence is fairly high. Seriously, these two researchers have been working on this study for years so it is fascinating to me to see how it has been refined in just the last several years.

In the 1990s one of the big arguments

from breeders was which breed to make as the baseline. As it turns out, Angus is now the baseline, being 0, which is a fairly obvious choice since they have the largest breed base in the United States. The across-breed EPDs were developed to assist commercial breeders understand what a bull of another breed would do on their straight-bred commercial herd of another breed. However, I question "hit" on the Hereford breed's YW and MM numbers in their research. It seems like a hard hit especially when in the practical world many of us know what a great cross Hereford and Angus are. We'll try to bring you answers in an upcoming issue.

I used to get quizzed thoroughly by a local commercial breeder (who will remain nameless) every year about how to figure out what a Hereford bull is going to do on his commercial Angus herd. We had in-

depth discussions about this several years in a row and it was always on sale day at a particular sale. The tools he was armed with on sale day were Hereford EPDs and actual birth and weaning weights. At that point, it was like comparing apples to oranges and was a best-guess scenario, depending a lot on actual weights and performance information on the parents.

I don't know how practical these across-breed EPD charts are but at least it is one more tool for commercial breeders who want to use them. As with EPDs themselves, these are all formulas based on scientific research combined with actual data of particular animal groups. Practical application is another matter in itself and stands to be proven.

I applaud Kuehn and Thallman for their dedication to the research which will be an ongoing study for years to come.

—JBH

TABLE 1: ADJUSTMENT FACTORS TO ADD TO EPDs OF EIGHTEEN DIFFERENT BREEDS TO ESTIMATE ACROSS BREED EPDs

Breed	Birth Wt.	Weaning Wt.	Yearling Wt.	Maternal Milk	Marbling Score*	Ribeye Area	Fat Thickness
Angus	0.0	0.0	0.0	0.0	0.00	0.00	0.000
Hereford	2.7	-3.5	-23.6	-17.1	-0.32	-0.09	-0.050
Red Angus	3.4	-23.2	-27.9	-3.9	-0.30	-0.08	-0.029
Shorthorn	5.8	11.3	38.8	20.2	-0.16	0.21	-0.142
South Devon	3.2	-4.8	-6.6	-0.3	0.08	0.16	-0.111
Beefmaster	6.3	35.7	29.5	9.9			
Brahman	11.0	42.8	5.9	23.2			
Brangus	4.5	14.6	6.0	5.8			
Santa Gertrudis	6.6	36.2	48.3	12.4	-0.66	-0.05	-0.116
Braunvieh	1.9	-21.6	-42.3	0.1	-0.67	0.22	-0.102
Charolais	8.6	38.1	45.3	6.9	-0.44	1.02	-0.220
Chianina	2.2	-20.5	-40.2	4.7	-0.45	0.45	-0.157
Gelbvieh	2.7	-18.2	-25.6	3.6	-0.41	0.78	-0.136
Limousin	3.8	-1.8	-35.9	-8.7	-0.71	1.09	
Maine-Anjou	4.2	-15.3	-36.7	-6.8	-0.84	0.95	-0.229
Salers	1.8	-4.8	-19.5	2.2	-0.10	0.79	-0.207
Simmental	3.7	-5.9	-10.9	-0.8	-0.42	0.53	-0.141
Tarentaise	1.7	30.3	20.3	24.1			

The ANCHOR program

We invite you to come visit us, see the progeny of 11X plus our new herd sires and our cow herd with their 2015 calves.

11X



Thank you to The Berrys in Cheyenne, Wyoming, for purchasing our interest in this powerful bull. We look forward to seeing his results in their herd.

Our 2015 bull crop for sale now at the ranch



ANCHOR POLLED HEREFORDS

Give us a call for more information:
(406) 467-2880

Paul & Berva Hinderager
31 14th Lane N.E.
Vaughn, MT 59487

JAMISON HEREFORDS

SINCE 1944 ...71 Years
of Breed Leadership
and Proven Performance!

12th BREEDERS & RANCHERS
PRODUCTION SALE
NOVEMBER 6 2015
Friday
AT THE RANCH • QUINTER, KANSAS

90 Registered Hereford Females
55 Bred JA Replacement Heifers • 20 Spring-Bred Cows • 15 Fall '14 Open Heifers
200 Comm'l Hereford, Blk & Red Baldie Bred Heifers
JA Genetics • Spring 2015 Calving • Bred Hereford & Angus
125 Quarter Horses
Ranch Geldings • 2015 Foals • Select Broodmares

A PREMIER FALL SALE EVENT!

DVAuction
Broadcasting Real-Time Auctions



**RANCH HORSES
OUR SPECIALTY!**

...Versatile, Proven,
Performance &
Cowhorse Blood!

Selling 60 seasoned ranchers &
started ranch & arena prospects!

Sun Frost, Driftwood and Hancock Bred
Performance Horses from Western Kansas' big ranch country!



CL1 DOMINO 9125W
Cowman's herdsire ...Hi-Maternal Trait Leader
Outstanding daughters sell!



CL1 DOMINO 216Z
Total Performance and Calving Ease Leader!
A Feature Service Sire!



HH ADVANCE 3040A
Complete, Moderate, Balanced, Fault-Free!
A Feature Service Sire!



CL1 DOMINO 860U
Powerful, 6-Trait, Performance Leader!
Elite Daughters Sell!

One of Hereford's Most Respected Line 1 Cowherds ...Selling Herd Builder Bred Heifers!



400
Sire: HH Advance 1098Y
BW 4.3 WW 56 YW 93 MILK 29 M&G 57



4702
Sire: CL1 Domino 860U
BW 4.0 WW 55 YW 90 MILK 32 M&G 60



4403
Sire: HH Advance 2181Z
BW 2.0 WW 53 YW 88 MILK 26 M&G 53



4136
Sire: CL1 Domino 9125W
BW 3.8 WW 56 YW 93 MILK 31 M&G 59



4413
Sire: HH Advance 2181Z
BW 3.5 WW 58 YW 95 MILK 27 M&G 56



4061
Sire: CL1 Domino 216Z
BW 0.2 WW 43 YW 76 MILK 25 M&G 47



4120
Sire: CL1 Domino 9125W
BW 3.8 WW 57 YW 94 MILK 29 M&G 57



4746
Sire: CL1 Domino 860U
BW 4.7 WW 59 YW 104 MILK 34 M&G 63



496
Sire: CL1 Domino 9125W
BW 2.9 WW 54 YW 92 MILK 28 M&G 55

A Feature ...1st Class Fall '14 Heifers!

GORDON JAMISON 785/754-3639 2271 County Rd. 74 • QUINTER, KS 67752 • www.jamisonranch.com

UNITED LIVESTOCK BROKERS, INC. • Jay George 605/391-6230 • Lebo, KS

Sale Roundup...

Holden Herefords
Miss Advance Female Pageant
2015
Sept. 17, 2015
Valier, MT
Auctioneer: Joe Goggins

58 Cows — \$8,768
5 Fall Pairs — \$18,400
12 Bred Heifers — \$8,875
23 Fall Yearling Heifer — \$6,435
98 Total Lots — \$8,722

Top Sellers:
 HH Miss Advance 2041Z and bull calf
 by HH Advance 3297A to Edgar Here-
 fords and S & S Herefords, Stephens-
 ville, TX, \$40,000.
 HH Miss Advance 9228W to Hayden
 Marie Hoffman, Thedford, NE,
 \$31,000.
 HH Miss Advance 4349B ET to Flying
 S Herefords, Paluxy, TX, \$31,000.
 HH Miss Advance 1180Y ET to Circle
 G Cattle, Canton, TX, \$28,000.



The Holden Female Sale was conducted as a video sale by The Livestock Link—which set up three 80 inch TV screens and ran the videos during the sale.

HH Miss Advance 1175Y ET to Harrison cattle Co., Arapaho, OK, \$25,000.
 HH Miss Advance 2220Z and bull calf by CL 1 Domino 269Z to Sierra Ranches, Modesto, CA, \$22,000.
 HH Miss Advance 0215X to Blaine Weiterman, Tyler, TX, \$19,000.
 HH Miss Advance 1005Y ET to L-W Cattle Co., Absarokee, MT, \$17,500.
 HH Miss Advance 4128B to Harrison Cattle Co., \$17,500.
 CL 1 Domino 7136T to Baker and Amdahl Herefords, Piedmont, SD and Meitler Herefords, Lucas, KS, \$17,500.
 HH Miss Advance 0178X ET to Morrell Herefords, Willows, CA and Al Calise, Powell Butte, OR, \$16,000.
 HH Miss Advance 4019B to Jim Carr, Springview, NE, \$15,000.
 HH Miss Advance 3075A to Erik Lawver Belgrade, MT, \$14,000.
 HH Miss Advance 4262B to Roger Jennings Palmyra, IL, \$12,000.

Churchill Cattle Co.
World Class Female Sale
September 18, 2015
Manhattan, MT
Auctioneer: Joe Goggins

92 Lots — \$10,639
5 Donors — \$20,150
24 Heifer Calves — \$16,656
60 Bred Heifers — \$7,692
3 Flushes — \$5,583
50 Commercial Bred Heifers — \$2,750

High Sellers:

Lot 12, Churchill Lady 5137C ET, 1/19/15 by KCF Bennett Revolution X51 to Iron Lake Ranch, Athens, TX, \$80,000.
 Lot 25, Churchill Lady 037X, 1/16/10 by Golden Oak Outcross 18U to Sierra Ranches, Modesto, CA, \$75,000.
 Lot 14, Churchill Lady 579C ET, 1/19/15 by Full Throttle and out of the Lot 25 cow to James Rosenberg and Devon Lockhart, TX, \$60,000.

The Berry's ANNUAL BULL SALE

Halter broke & pasture raised!

Mon., October 19, 2015

1:00 at the ranch • Cheyenne, WY

Selling

60 plus Two Year Old Bulls
9 Sensation Sons
4 Feature Bull Calves by PI, CL1 Domino 314A
2 Heifer Calves
5 Bred Heifers



Lot 25

B SENSATION 25B

DOB: 3/16/14 • Reg. #43619487
 Sire: CHURCHILL SENSATION 028X
 Dam: B LADY RIBSTONE 120Y
 BW 1.1 WW 56 YW 81 Milk 34 M&G 62



Lot 14

B DESERT GOLD 14B

DOB: 3/6/14 • Reg. #43619336
 Sire: UPS DESERT GOLD 4007
 Dam: B 5110 DOMINETTE 241Z
 BW 0.2 WW 45 YW 69 Milk 29 M&G 52



Lot 52

B SIR YANKEE 52B

DOB: 3/29/14 • Reg. #43620127
 Sire: GH ADAMS NORTHERN YANK ET 230U
 Dam: B MISS NEON MOON 818
 BW 3.0 WW 46 YW 86 Milk 24 M&G 47

Bid online:

DVAuction
 Broadcasting Real-Time Auctions
 www.DVAuction.com

Call or e-mail for more information or a catalog:

The Berry's

3049 CR 225
 Cheyenne, WY 82009

Jay and Janice Berry
 Home: (307) 634-5178 • Cell: (307) 630-7944

jaberryherefords@msn.com

VIDEOS online at
WhereCowmenBuyBulls.com

WHERE COWMEN BUY BULLS

(continued on page 12)

KNOLL CREST'S
TOTAL

Performance

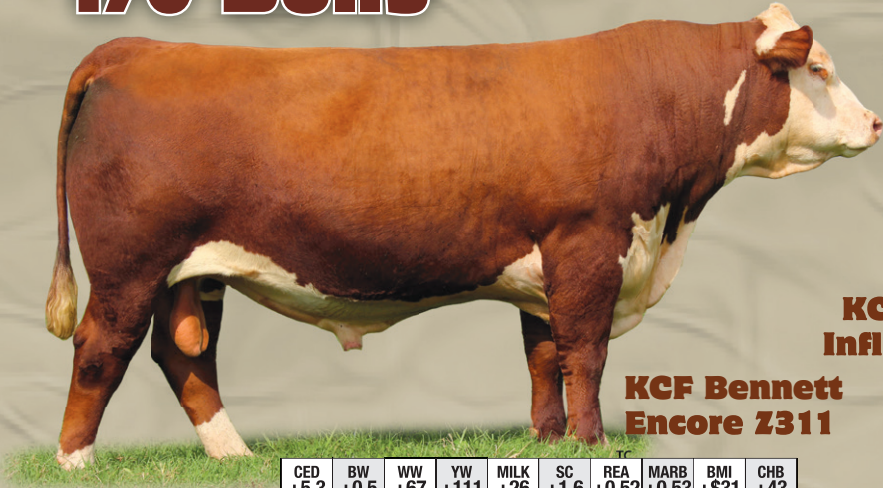
BULL SALE

Friday • DECEMBER 4, 2015

Hereford Sale Bulls AVERAGE:

Featuring
170 Bulls

CED	BW	WW	YW	Milk	SC	REA	MARB	BMI	CHB
+3.1	+1.5	+68	+110	+28	+1.6	+0.65	+0.38	+\$29	+\$40
top 20%	best 16%	top 1%	top 1%	top 10%	top 1%	top 5%	top 2%	top 1%	top 1%



**KCF Bennett
Encore Z311**

CED	BW	WW	YW	MILK	SC	REA	MARB	BMI	CHB
+5.3	+0.5	+67	+111	+26	+1.6	+0.52	+0.53	+\$31	+\$43

Homozygous Polled. Z311 covers all the bases! His first sons sell, plus maternal brothers! Semen available.



**KCF Bennett
Influence Z80**

CED	BW	WW	YW	MILK	SC	REA	MARB	BMI	CHB
+2.4	+4.3	+74	+127	+26	+1.9	+0.72	+0.68	+\$34	+\$48

Homozygous Polled. Z80's rare combination of growth, muscle, marbling and maternal complements his progeny's extra volume, capacity and structural integrity. His first sons topped our spring sale and a powerful group sell on December 4!



**RST 0124
Times A
Wastin 2107**

CED	BW	WW	YW	MILK	SC	REA	MARB	BMI	CHB
+4.8	+0.5	+66	+113	+26	+1.0	+0.54	+0.33	+\$23	+\$41

2107 is a polled son of Times A Wastin and was the standout in his calf crop, ratioing 116 WWR, 114 YWR, 144 IMF, 105 REA. His first 66 progeny at KCF and the Olsen test herd averaged 99.6 BWR and 102.5 WWR. A powerful set of calving-ease sons sell! Semen available.

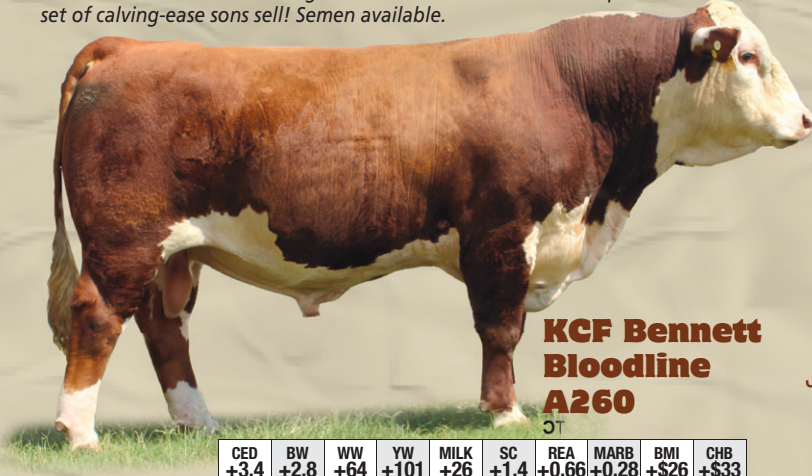


**KCF Bennett
Revolution
X51**

CED	BW	WW	YW	MILK	SC	REA	MARB	BMI	CHB
+4.7	+3.2	+80	+126	+26	+1.6	+1.51	+0.36	+\$32	+\$49

Homozygous Polled. X51 has set a new breed standard for performance... growth, carcass, maternal. Selling powerful sons and maternal brothers by 88X and Sensation. Semen available.

A select group of fall-born open heifers and spring-bred females available immediately at private treaty. Sires include X51, Catapult, 2107, Z80, Bonanza and others.



**KCF Bennett
Bloodline
A260**

CED	BW	WW	YW	MILK	SC	REA	MARB	BMI	CHB
+3.4	+2.8	+64	+101	+26	+1.4	+0.66	+0.28	+\$26	+\$33

Homozygous polled. The most powerful and complete Proficient son we have identified. A260 ultrasounded the largest ribeye ever, of any breed, in our history. His M326/P606 dam is stellar and currently records 6@99 BWR, 6@102 WWR, 4@106 YWR, 16@111 IMF, 16@103 REA. Bloodline may have the greatest "cow making" potential of any bull we've raised. A maternal brother by X51 sells Dec. 4! Semen available.

Serving the beef industry
since 1944

James D. Bennett
(434) 376-7299
Paul S. Bennett
(434) 941-8245
Dalton G Bennett
(434) 664-7946



Jim G. Bennett
(434) 664-7935
Brian R. Bennett
(434) 664-8309
Scott R Bennett
(434) 660-7268

17659 Red House Road • Red House, Virginia 23963
Martha Johnson, Office Manager (434) 376-3567 • Fax (434) 376-7008
knollcrest@hughes.net • www.knollcrestfarm.com

LiveAuctions.TV Brad Fahrmeier
816.392.9241

Sale Roundup...

(continued from page 10)

**Mohican West & Guests
Female Sale
September 24, 2015
Laurel, MT**

**3 Bulls — \$16,283
54 Females — \$5983
57 Lots — \$6525**

Top Sellers:

Lot 1, Mohican Top Shelf Z1, 1/2/12 by NJW 73S; Mohican West to Meadow Ridge Farm, Broadway, VA, \$15,100, 1/2 interest and full possession.

Lot 2, TDP Crossover Z400, 1/12/12 by

TH 133U 719T Upgrade 69X; Mohican West to River Valley Polled Herefords, Newburch, Ontario, \$12,250, 1/2 interest and full possession.

Lot 37, LJE Z712 Grace 004B, 2/7/14 by E 4L Schatzee ET Z712; Ehlke to Bar Star Cattle, Loma, MT, \$10,000.

Lot 16, Mohican Miss 26Y, 2/4/11 by MSU TCF Revolution 4R; Mohican West to River Bank Ranch, Taylor, ND, \$9,100.

Lot 11, Mohican Top Shelf 407C ET, 3/19/15 by Mohican Top Shelf Z1; Mohican West to Scott and Andy Pennell, Navarre, OH, \$8,000.



Mohican Top Shelf Z1 topped the Mohican sale at \$15,100 to Meadow Ridge Farm, Broadway, VA.



Part of the Holden sale crowd.



Lee Venhuizen, Dale's mother, was in attendance at the Churchill sale. She is 90 years young!



Terri Barber did some bidding at the Churchill sale.

Lot 51, E 832 Miss Boulder X9, 1/28/10 by MC 243R Boulder U832; Ehlke to Dale Stith, Mayslick, KY, \$8,000.

Lot 5, Mohican Nita 407B ET, 2/15/14 by NJW 73S M326 Trust 100W ET; Mohican West to Pelton Polled Herefords, Haliday, ND, \$7,000.

College of the Ozarks® Hereford Production Sale



November 28, 2015

Point Lookout, MO

Contact Tammy Holder
(417) 342-0871



David Kelly and his wife Maggie came all the way from England to take in the Churchill sale.



Dimitri Matarags, Iron Lake Ranch, Athens, TX, bought the high seller in the Churchill World Class Female Sale.

**Hoffman Ranch
Thedford, NE
September 28, 2015**

105 Lots — \$15,090

High Selling Lots:

Lot 1, H Kimberly 5031 ET, 1/24/15 by H/TSR/CHEZ/Full Throttle, \$110,000 to Swanson Ranch, IA.

Lot 13, H BL MOCHA 502 ET, 1/24/15 by AH JDH Cracker Jack 26U ET, \$100,000 to Skiles Ranch, TX.



Top seller in the Hoffman sale was Lot 1, a January Full Throttle daughter purchased for \$110,000.

Full report next month!

"FHR" FENTON FE

HEREFORD RANCH INC.

51ST ANNUAL FALL SALE

SATURDAY, NOV. 21, 2015

1:00 PM at the ranch 7 mi. East of Irma on Hwy 14 or 11 mi. West of Wainwright



Sale can be viewed
online with DLMS

Videos of all lots
available by Oct. 25

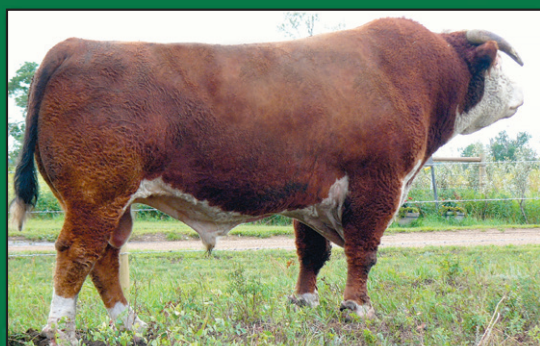
SALE OFFERING:

60 Long Yearling Bulls • **100** Registered Bred Heifers
30 to sell as single lots • 70 to sell in groups of 5
50 Commercial Bred Heifers
5 Broke Ranch Geldings • **15** Fancy Foals (Blue Roans, Red Roans, Buckskins)

SIRES OF THE 2015 OFFERING:



FE 8T RED RIBSTONE 18Y



SGC 30U RIB STANDARD 83Y

7 Yr Old Sale Gelding



FE 96U ROYAL RIBSTONE 28Z



FE 43T EMPEROR LAD 232Z



SNS 5S STANMORE LAD 60X



FE 44S RED SKYLINE 24U



BANNERLANE 108U STD 74Z



FE 152S FRONTLINE 199Y

Visit www.fentonherefordranch.com to view catalogue

Al & Lori Fenton
Becky, Curtis & Ray-Lynn
Phone/fax 780-754-2384
Cell: 780-842-7806

Conrad & Janel Fenton
Dalee, Prior, Emerson & Beau
Phone: 780-754-3321
Cell: 780-209-3600

Blair & Jessica Fenton
Gray, Tayva & Laney
Phone: 780-754-2891
Cell: 587-281-0900

Email: fentonherefordranch@gmail.com
www.fentonherefordranch.com
Box 479, Irma, AB, T0B 2H0

7 mi. E. of Irma on Hwy. #14 or 11 mi. W. of Wainwright - Look for Hereford Sign

South Dakota State Fair 2015 – Hereford Show Results

by B. Lynn Gordon



Open Show
Judge: Lydell Meier, Clinton, TN

SDHA 2015 Heifer Futurity – from SD Excellence Sale
Judge: Ethan Johnson, Baltic, SD



Grand Champion Female – ECR Miss Sensation 44, 4/6/14, CK Cattle Company, Highmore, SD.



Reserve Champion Female – ECR AJ Miss Sensation, 3/31/14, Fawcett's Elm Creek Ranch, Ree Heights, SD.



Grand Champion Futurity Heifer – Kelsey Repenning, Mitchell, SD with JWG Meg 1444B, 3/26/14 purchased from Jeff Gerlach, Stickney, SD.

Grand Champion Bull – Blacktop Rolex 4912 ET, 2/8/14, Blacktop Farms, Mitchell, SD.

Reserve Champion Bull – HPH 10Y Bodacious 10, 3/8/14, Hanson's Polled Herefords, Conde, SD.



Reserve Champion Futurity Heifer – Mackenzie Halver-son, Canton, SD with MPH 158W Enchantment B41, 1/3/14, purchased from Mettler Polled Herefords, SD.

SDHA 2015 Heifer Special
Judge: Jeff Jackson, Texas



Grand Champion Heifer, Heifer Special – ECR Miss Sensation 44, 4/6/14, exhibited by Kenidy Effling, Highmore, SD.

HEREFORD

BOWLING RANCH

RED ANGUS

2015 PRODUCTION SALE

TUESDAY, NOVEMBER 10TH - NOON

At the Ranch near Newkirk, Oklahoma
(Located southeast of Arkansas City on the KS-OK state line)

DVAuction
Broadcasting Real-Time Auctions

SELLING

- 42 Hereford 18-Month & Two-Year-Old Bulls
- 35 Registered Hereford Females
- 13 Red Angus 18-Month & Two-Year-Old Bulls
- 60 Commercial Females

HOME GROWN • BLUE COLLAR • RANGE READY

Contact us for a catalog or more information:

Nancy Bowling
(580) 362-5026 • nkbowling@yahoo.com
www.BowlingRanch.com

Melvin Young, Ranch Manager
(580) 761-9257
BowlingRanch@outlook.com

Sale Manager: Justin B. Stout • (913) 645-5136 • jbs5356@hotmail.com

(continued on page 16)

MOHICAN WEST BULL SALE

Monday, November 9, 2015

SELLING 56 BULLS

**Sale at 1:00 p.m. (MST)
at the ranch, Laurel, MT**

28B



MOHICAN CROSSOVER 28B

BD: 1/31/2014 • Act. BW 80 • Adj. 205 800
BW 3.0 WW 62 YW 105
Milk 25 M&G 57 REA .79
Sire: TDP CROSSOVER Z400
Sire of Dam: NJW 73S M326 TRUST 100W ET

90B



MOHICAN TOP SHELF 90B

BD: 2/21/2014 • Act. BW 76 • Adj. 205 659
BW 2.3 WW 59 YW 93
Milk 24 M&G 53 REA .83
Sire: MOHICAN TOP SHELF Z1
Sire of Dam: TDP VINTAGE 402U ET

103B



MOHICAN POWERHOUSE 103B

BD: 3/03/2014 • Act. BW 73 • Adj. 205 697
BW 3.1 WW 55 YW 84
Milk 24 M&G 52 REA .43
Sire: BOYD POWERHOUSE 2028
Sire of Dam: STAR MARKET INDEX 70X ET

104B



MOHICAN UPGRADE 104B

BD: 3/04/2014 • Act. BW 78 • Adj. 205 643
BW 1.0 WW 48 YW 86
Milk 26 M&G 50 REA .14
Sire: TH 133U 719T UPGRADE 69X
Sire of Dam: NJW 98S DURANGO 44U

108B



TDP TOP SHELF 108B

BD: 3/08/2014 • Act. BW 77 • Adj. 205 637
BW 2.9 WW 65 YW 104
Milk 28 M&G 60 REA 1.07
Sire: MOHICAN TOP SHELF Z1
Sire of Dam: MSU TCF REVOLUTION 4R

123B



TDP GRASSMASTER 123B

BD: 4/02/2014 • Act. BW 79 • Adj. 205 703
BW 2.1 WW 55 YW 82
Milk 24 M&G 52 REA .38
Sire: DR MW TRASK GRASSMASTER W02
Sire of Dam: BKR SANDERSON 73C 60S

131B



TDP TOP SHELF 131B

BD: 4/20/2014 • Act. BW 83 • Adj. 205 765
BW 1.9 WW 65 YW 96
Milk 27 M&G 59 REA .71
Sire: MOHICAN TOP SHELF Z1
Sire of Dam: SHF RIB EYE M326 R117

422B



MOHICAN VICTOR 422B

BD: 3/13/2014 • Act. BW 85 • Adj. 205 815
BW 2.2 WW 47 YW 67
Milk 30 M&G 53 REA .32
Sire: TH 122 71I VICTOR 719T
Sire of Dam: PW VICTOR BOOMER P606

427B



TDP UPGRADE 427B

BD: 3/14/2014 • Act. BW 79 • Adj. 205 848
BW 1.9 WW 59 YW 99
Milk 21 M&G 51 REA .46
Sire: TH 133U 719T UPGRADE 69X
Sire of Dam: MOHICAN MINT 19M

205B



MOHICAN TOP 205B

BD: 8/24/2014 • Act. BW 75 • Adj. 205 650
BW 3.0 WW 60 YW 94
Milk 27 M&G 58 REA .77
Sire: MOHICAN TOP SHELF Z1
Sire of Dam: STAR STROKE OGENIUS 91X ET

208B



MOHICAN GRASSMASTER 208B

BD: 8/28/2014 • Act. BW 83 • Adj. 205 745
BW 3.4 WW 57 YW 82
Milk 24 M&G 53 REA .64
Sire: DR MW TRASK GRASSMASTER W02
Sire of Dam: TDP VINTAGE 402U ET

211B



MOHICAN GRASSMASTER 211B

BD: 9/04/2014 • Act. BW 85 • Adj. 205 565
BW 3.4 WW 51 YW 77
Milk 18 M&G 43 REA .45
Sire: DR MW TRASK GRASSMASTER W02
Sire of Dam: ASH TEAMWORK 11T ET

225B



TDP GRASSMASTER 225B

BD: 9/23/2014 • Act. BW 83 • Adj. 205 670
BW 3.7 WW 61 YW 90
Milk 24 M&G 55 REA .62
Sire: DR MW TRASK GRASSMASTER W02
Sire of Dam: TDP VINTAGE 402U ET



For more information contact:

Mohican West

Conard & Nancy Stitzlein, Owners
Terry Powlesland, Mgr.

Office phone and fax (406) 633-2600
(406) 633-2810 • Cell: (406) 670-8529
E-mail: mohicanw@yahoo.com

3100 Sportsman Park Rd.
Laurel, MT 59044

Catalog may be viewed online at
www.herefordamerica.com or
www.mohicanpolledherefords.com

www.mohicanpolledherefords.com

South Dakota State Fair 2015 – Hereford Show Results

(continued from page 14)

SDHA 2015 Steer Futurity – from SD Excellence Sale
Judge: Ethan Johnson, Baltic, SD



Reserve Champion Heifer, Heifer Special – MS Mary H 413 ET, 4/6/14, exhibited by Travis Hofer, Bridgewater, SD.



Grand Champion Futurity Steer – Kenidy Effling, Highmore, SD, purchased from Schuette Land and Cattle Co., Highmore, SD. 1360 lbs.



Reserve Champion Futurity Steer – Kayle Lauck, Salem, SD purchased from Stenberg Herefords, Colman, SD. 1385 lbs.

SDHA 2015 Steer Special Judge: Jeff Jackson, Texas



Grand Champion Steer – Karly Schaunaman, Aberdeen, SD, 1330 lbs. Breeder: Hansmeier & Son, Bristol, SD



Reserve Champion Steer – Kenidy Effling, Highmore, SD. 1360 lbs. Breeder: Schuette Land and Cattle Co., Highmore, SD.



Leibel Scholarship Winner – Eric Tesch, Goodwin, SD was selected as the recipient of the John Leibel Memorial Scholarship. SDHA Manager Phil Eggers presented the award at the SD State Fair.

"NO HOLDS" INAUGURAL ONLINE SALE NOVEMBER 15, 2015

Offering top show heifer and select steer prospects

Sires represented: NJW 73S W18 Hometown 10Y ET,
WORR OWEN Tankeray Y79D ET,
H WCC/WB 668 Wyarno 9500 ET,
Churchill Sensation 028X, H Excel 8051 ET
and H/TSR/CHEZ/Full Throttle

Sale hosted by:
LOWDERMAN
AUCTION OPTIONS
PO Box 488, Macomb, IL 61455 • www.lowdermanauctionoptions.com
Monte (309) 255-0110 • Cody (309) 313-2171



MCM 8051 Star 510C ET
Champion Horned Div. I

Sire: H Excel 8051 ET • Dam: KN Starburst 701

Brian, Jill, Dan, Grady, Mattie
and Harrison McMahon
2005 E. Powerline Rd.
Ayr, NE 68925

MCM
POLLED HEREFORDS

Brian 402-462-0606
mcm_polled_herefords@yahoo.com
Grady 402-984-7620
Grady.McMahon@yahoo.com

www.mcmpolledherefords.com

Stats: 1275 lb.
Est. Carcass Wt.
803 lbs.
Fat 0.2
REA 14.68
Marb 4.2
Choice minus
Yield Grade 1.85
Percent retail product
52.42
Retail Carcass \$482.00
Retail Value per cwt.
\$248.67



Grand Champion Carcass Steer – Exhibited by Ella Steifvater, Salem, SD. Steer bred by Jeff Gerlach, Stickney, SD.

Stats:
1350 lb.
Est. Carcass Wt.:
850 lbs.
Fat 0.4
REA 16.5
Marb 6.3
Choice
Yield Grade 1.88
Percent retail product
52.35
Retail Carcass \$482.00
Retail Value per cwt.
\$248.31



Reserve Champion Carcass Steer – Exhibited by Delaney Scott, Canton, SD. Steer bred by Section 16 Cattle Co., Canton, SD.



36th Annual Sale

High Altitude - PAP Tested Cattle

Tuesday, October 20, 2015

Broadcast on **LiveAuctionsTV**



404B by UPS Domino 3027, PAP 39



418B ET by CL 1 Domino 501R, PAP 35



422B by CL 1 Domino 105Y, PAP 36

A Proven Program for 53 Years.....*Selling muscular, calving ease and growth bulls who'll add pounds/milk to your herd & sire productive replacements. They'd be ideal for making baldies too.*



433B by SH 501R Domino 816U, PAP 40



450B by F 157K Ribstone 715, PAP 39



452B by CL 1 Domino 739T, PAP 39

Sale bulls by

- CL 1 Domino 739T
- F 157 K Ribstone 715
- SH 501R Domino 816U
- CL 1 Domino 501R
- CL 1 Domino 105Y
- SH Diamond 881
- UPS Domino 3027
- SH 3027 Domino 105Y

Bred Heifers

In 36th Annual Sale

- Baldy Heifers bred to SBA 803U Travelodge 313A

By Private Treaty

- Hereford Heifers AI to UPS Domino 3027
- Angus Heifers bred AI to Cole Creek Cedar Ridge 1V



These bulls sell!

Catalogs & videos available

Mary Strang 800.351.5362 970.270.4445 cell

2969 County Road 8, Meeker, CO 81641

Tom & Lisa Walsh 970.878.5879 970.270.9599 cell

strangherefords@gmail.com . strangherefords.com

strangherefords@gmail.com - www.strangherefords.com

Nebraska Junior Hereford Show Champions

Sunday Judge: Doug Smith, Nebraska College of Technical Agriculture in Curtis - Livestock Judging Coach



Grand Champion Steer — Owned by Wesley Denton, Blue Rapids, KS.



Reserve Champion Steer — Owned by Rianna Chaney, Elwood, NE.



Champion Bred & Owned Heifer and Champion Horned Bred & Owned Heifer — Carlee Meeks, Taylor, NE. JNHE Reserve Champion Division, both shows.



Grand Champion Polled Heifer — Owned by Sage Krebs, Gordon, NE.



Reserve Champion Polled Heifer — Owned by Hannah Williams, Kearney, NE.



Reserve Champion Horned Heifer Owned — Blake Bruns, North Platte, NE.

20 BRED HEIFERS FOR SALE

Bred Hereford

Purebred and registered • Papers Available

Carrying a registered calf

Synchronized and A.I.'d to low birth weight Hereford bull.

Cleaned up with a Lambeau son.

Start calving in early February.

For more information contact:

McCLUN'S
LAZY JM RANCH

Jim & Jerri McClun
1929 Road 60
Veteran, WY 82243
Ph. 307-837-2524

Jeff & Kari McClun
1930 Road 60
Veteran, WY 82243
Ph. 307-837-2554
jkmccclun@wyomail.com



Reserve Champion Bred & Owned Heifer — Bred & Owned by: Harrison McMahon, Ayr, NE. JNHE Class Winner

(continued on page 20)

SELLING:

1200 1st Cross Baldy Replacement
Heifers with Steer Mates (600 each)
— Carmichael genetics —
Mon., October 19th
at Faith Livestock, Faith, SD

Annual Bull Sale is 3rd Saturday in February.

For more information contact:

CARMICHAEL
Herefords

14111 SD Hwy 73
Meadow, SD 57644
Keith Carmichael
605/490-7659

Reyher Embryonics

7195 Thorpe Road
Belgrade, Montana 59714



Mark 406/539-4656
Jeanne 406/580-3490
reyherembryonics@aol.com

DON'T WAIT!

ATTEND THE "TOMORROW NOW" SALE



Desert Comfort 037



A portion of the cows

THE FUTURE IS AVAILABLE NOW!

The most profitable cattlemen in the future will have:

- ★ **COWHERD TOTAL POWER!** Cows that breed every year, have excellent udders and produce big, strapping calves that never disappoint their owners are our kind now.
- ★ **CARCASS EXCELLENCE!** An ever-growing number of customers are reporting phenomenal Choice and Prime grades on cattle sired by Desert ★ Mart Bulls!
- ★ **COMPLETE PROGRAM TRUST!** One-stop shopping for cattle that are geared to fit your climate, your cattle and your profit driven needs are why we plan on another 113 years!

Inquire today for catalog, videos and in-depth analysis on all sale cattle.

"TOMORROW NOW" SALE

SELLING: 100 Bulls • 35 Females

Thurs., November 19, 2015

At the Ranch • Auctioneer: Joe Goggins

Lunch: Noon • Sale 1 p.m.

LIVE ON THE INTERNET. LIVE AUDIO. LIVE VIDEO. BIDDING
LiveAuctionsTV

LARGENT AND SONS

Hereford cattle since 1902

P.O.Box 66

Kaycee, WY 82639

10 miles south on I-25

Free delivery on purchases of \$5,000 or more.

Mark & Cathy: 307-738-2443
Mark's cell: 307-267-3229

Dave's cell: 307-267-4491
Toby's cell: 307-267-1997
Laura's cell: 307-267-6786

e-mail: largentandsons@yahoo.com • website: www.largentandsons.com

(continued from page 18)



Senior Showmanship Champion:
Cody Jensen (right)
Reserve: Bailey McKay (left)



Intermediate Showmanship Champion: Hannah Williams (right)
Reserve: Emily Frenzen (left)



Junior Showmanship Champion: Blake Bruns (right) Reserve:
Wesley Denton (left)



Grand Champion Pair — Katie Nolles, Bassett, NE



Reserve Champion Pair — Ralston Ripp, Kearney, NE



Grand Champion Futurity Heifer — Purchased by Malina Lindstrom, Minden, NE, sold by Tracey Cattle Co., Wellfleet, NE.

WELCOME TO HEREFORD CROSSROADS!

Art & Historical Show dedicated to Herefords

Theford Art Gallery

hosting October through November, 2015

with Thomas Co. Fairgrounds second site from Oct. 16 to 18

in conjunction with Follow the Rails Art Trail on the Sandhills Journey
Scenic Byway, Grand Island to Alliance, NE Hwy 2

Receptions - October 17th, 5 to 8 p.m. at the Thomas Co. Fairgrounds
and November 7th, 5 to 8 p.m. at the Theford Art Gallery

For more information contact these
committee members:

Linda Teahon • superioraster16@hotmail.com

Terri Licking • twlicking@gmail.com

Richard Brown • Brown.dick@gmail.com

PICK OF THE CROP

Special Female Sale

SUNDAY, NOVEMBER 1, 2015

AT THE RANCH • ROCKLAKE, ND • 2 P.M. CST

Offering Choice of:

34 ANGUS BRED HEIFERS
60 ANGUS OPEN HEIFERS

Offering:

5 POLLED HEREFORD BRED HEIFERS
5 POLLED HEREFORD OPEN HEIFERS

DVAuction



PLC Danielle 14B
#P43518612 Sire: NJW 73S M326 Trust 10W ET



PLC CPH Ms Trust 3C
#P43620336 Sire: NJW 73S M326 Trust 10W ET



TNT Shania 405
17937250 Sire: Connealy Final Product



PLC Brinley 20B
#P43518091 Sire: CPH Radar 11Y



PLC CPH Sunshine 19C
#P43619864 Sire: CPH Radar 11Y



TNT Eline 449
17938462 Sire: Connealy Confidence 0100

TNT ANGUS & CARTER'S POLLED HEREFORDS

6760 92nd St. NE • Rocklake, ND 58365

TERRY & MAVIS CARTER
701-266-5468 • 701-370-8730 (cell)
tmcarter1978@gmail.com

TROY, JERI & HARLEE CARTER
701-305-0104 (cell)
troycarter77@hotmail.com

JAY, MALYNDA, KENZY & KEELY PENNER
605-929-7314
mrs.penner@hotmail.com

JIMMY
CARTER
701-266-5575

**We invite you to join us on November the 14TH at
EBY RANCH in Emporia, Kansas for the**

**5TH
ANNUAL**

AMERICAN BLACK HEREFORD NATIONAL HEIFER SALE

★ **Featuring approximately 80 head of the best in the country of open and
bred heifers along with some top genetic embryo packages** ★

SALE STARTS AT 1PM CENTRAL TIME AND THE JUNIOR SHOW WILL BEGIN AT 10AM



**Sat., November 14
at Eby Ranch
Emporia, Kansas**

**Sale will be
broadcast live
on DV Auction.**

- Endless genetic breeding combination • Proven performance breed
- Color you can count on • Heterosis • Docility • Superior carcass traits

High standards results in high performance.

These are just a few of the reason that the American Black Hereford has taken the industry by storm and has become one of the most sought after breeds of cattle in the world.



For more information contact:

ABHA President Tim Tarter

606-305-2289

ngsstriper@Hotmail.com

ABHA Administrator Jim Potts

913 677-1111

abhablackhereford@gmail.com

Or contact one of these American Black Hereford Breeders near you:

Baxter Farms

Mark Baxter
16984-368 Ave.
Rockham SD 57470-7702
605-450-0206
baxterangus@nrctv.com

Smith Black Herefords

Marc Smith
7525 N.19th Ave. West
Newton Iowa 50208-8852
641-791-9438
smithblackherefords@
gmail.com
www.smithblackherefords.com

JR Kroening Herefords

Richard & Julie Kroening
43419 310 Ave. SE
Fosston MN 56542-9210
218-435-1223
218-280-3790 cell
juliek@gvtel.com

Benjamin T. Po, Jr.

32003 Wendt Park Trace
Fulshear, TX. 77441-4187
Phone: 281-346-0642
Cell: 281-433-4443
www.circleporanch.com
pediatricdentist@comcast.net

2015 Montana Hereford Association Tour - Sept. 12, 2015

By Kayla Sargent

"Herefords Under the Big Sky" could not of been a more appropriate name for Saturday, September 12th. With nothing but big blue skies above, Hereford breeders and ranchers from across the state of Montana gathered in Billings for a day full of good cattle and passionate agriculturists.

The day started off at ORigen, just South of Billings, with breakfast, an InVitro ORigen presentation and a look at the Herefords currently at stud. Jared Murnin, ORigen's general manager, welcomed everyone to the facility and summed up the operation, while encouraging more breeders to consider using the service.

"We are always looking for good Hereford genetics, that's a side that's quickly growing here at ORigen," Murnin said.

Another division that is expanding for the company is InVitro ORigen (IVO). This program began in January of 2014 with the help of InVitro Brazil. Jenna Barkhurst, IVO's customer specialist, gave an overview of the InVitro fertilization process and explained some of the advantages of using this technique. Some of these included the convenience of a team traveling to your ranch, no super ovulations, which means one simple trip through the chute for the cow, and the ability to make the most out of one straw of semen.

"If you have that one perfect straw in your tank, IVF can maximize that for you. One straw can cover 8-10 cows with IVF," Barkhurst said.

After a quick look at the five Hereford sires at ORigen, the tour headed just down the road to the McMurry Ranch. Fred, along with his wife Doreen and daughter Becky had a variety of cattle on display including herd bulls, bred heifers, cow calf pairs and a donor cow. Their ranch has been in Montana for about 40 years and they have focused on building a herd that's easy

fleshing and can prosper on their dryland environment.

Looking at their cattle, it's obvious that's just what they did. Most comments heard around the pens pertained to the excellent condition that the cattle were in for just coming off of summer pasture.

"Our goal is to raise cattle that are gonna work for the commercial guys. We pay a lot of attention to birth weight and overall performance," McMurry said. The family consigned several females in the Mohican West sale on September 24th.

From there, a much longer drive lead us to the perfect location for lunch. The Banjo Ranch, provided sandwiches, a great view, and, as fitting with their name, a band to entertain the crowd.

Kelle Jo Ellis had several bred heifers and cow calf pairs to look through after lunch. She wrapped up her introduction of the cattle by saying, "I just love my cows." This was quite apparent as she could tell the bloodlines of each cow and calf out there as far back as you would care to hear.

The Sidwell Ranch was next on the agenda. Raising Herefords has been a long running tradition in their family. Richard's grandfather started a Hereford business in 1908. Along with his wife Becky, Sidwell's have carried on the family name and built up a great herd of cattle. Since Becky spends so much time working the cattle on her own, they need to be as low maintenance as possible. This has dictated the traits that they are trying to breed for today.

To attest to their low maintenance cattle, Barker Herefords had a display alongside the Sidwell cattle. Barker's have bought many cows from Sidwell's and rely on their genetics to make a cow that can hold up on their place near Shelby, MT.

"They gotta work for themselves, it's hard out there," said Dennis Barker.

Sidwell said that his cattle as well as Barkers and many others we viewed on the tour are a great tribute to the Hereford breed as a whole, producing without too much input.

"Right now is a great time to be in the cattle business and if we continue to hold our ground, we'll start seeing more of a demand for our bulls and females. We got a lot more quality than a lot of other breeds and a lot of good things going for us," Sidwell said of the Hereford breed.

After some very optimistic words, the final stop was



Tour participants enjoyed breakfast burritos during an IVF presentation at ORigen, Saturday morning.



Jeanne Reyher helps explain how a MicroQ incubator works to ship supplies back and forth to ranch aspirations.



Jared Murnin gives an overview of ORigen as Jenna Barkhurst waits to present on InVitro ORigen. Ricardo Tiveron, of InVitro Brazil, was present to answer questions on the process as well.



Larry Travnicsek discusses Churchill Manhattan 428B ET's data with Rick Coyle and Tom Sparks.



Schu-Lar Red Bull 18X was one of the five Hereford bulls at ORigen.



Fred McMurry introduces his family, daughter Becky and wife Doreen, and welcomes the tour to their ranch.



John Jackson and Fred McMurry out looking through McMurry's bred heifers.



Austin Frank and Larry Travnicsek, of Frank Herefords, compare thoughts on McMurry's pairs.



Banjo Ranch bred heifers and a view as far as the eye can see.

just up the road at Loyning & Walen Cattle Company. Carl Loyning gave an overview of their operation, their cows and the extensive embryo work they have been doing. Many of the cattle in their display were a result of embryo transfer. Being new to the breed, the Loyning's shared their excitement for the future and appreciation for the help they had so far.

"Our operation is a joint effort from all and we are very fortunate to start this adventure," Denise Loyning said.

This stop not only included their cattle, but also displays by Frank Herefords, Bowen Ranch, Churchill Cattle Company, and Feddes Herefords. Their displays included everything from herd bulls to heifer calves. Each producer got a chance to introduce their operation and give some background on their cattle.

Frank Herefords are somewhat new to the business but are focused on growing a high quality herd. The Bowen Ranch near Joliet, MT use a lot of Holden and Cooper genetics and strive to build a herd that will pay their own way. Dale Venhuizen, of Churchill Cattle, brought several heifer calves to display that later sold in their female sale on September 18th. Dan Feddes and his son, Taylor, brought a display of bull calves and further emphasized that they are always breeding for great maternal traits. This stop left plenty of time to sort through the displays and talk one on one with each producer there.

To wrap up the night, none other than Certified Hereford Beef, was served at the L Bar W. The tour was a great opportunity for all participants to see great cattle, meet other ranchers and catch up with old friends.

"It was a beautiful day and we got to look at some beautiful cattle," Denise Loyning said.



CHB's Trey Befort and Tom Sparks visiting and checking out McMurry's herd bulls.



Looking at Banjo Ranch pairs.



Helping the little one across the ditch.



This herd bull was content to stay in the shade on a very hot afternoon.



Dale Venhuizen brought several heifer calves to display before they sold in the Churchill female sale.



Kelle Jo Ellis, welcomes the tour to her ranch and introduces our lunch time entertainment.



Richard and Becky Sidwell welcome everyone to their ranch and share some perspective on the future for Hereford cattle.



Plenty of cattle to look through on a beautiful stop at the Sidwell Ranch.



Larry Travnicek visits with Chad and Devon Murnin during the last stop at the L Bar W.



Not only was lunch accompanied by and view and great cattle, but also some music at the Banjo Ranch.



Enjoying the view from the Banjo Ranch and checking out the bred heifers.



Devon Murnin and Stephanie Murnin look through the bulls at Sidwell's Ranch.



Barker's pairs were also on display with the many cattle at Sidwell's stop.



The stop at Loyning & Walen's had plenty of cattle to look through and breeders to talk to before the day ended.



Linda and Jenna Barker walking through McMurry's pairs and trying to guess the weight of the donor cow for a prize.

South Dakota Hereford Tour

September 11-12



Eggers Southview Farms near Sioux Falls, SD (Phil and Tim Eggers) had a very nice display of pairs with heifer calves that sold in an online sale a few days later.

By Jill Hotchkiss

Once again the South Dakota Hereford breeders pulled out all the stops and hosted a fantastic Hereford tour. One full bus with cars following to each of the 12 locations made for a great crowd at each tour stop. People from Iowa, Nebraska, Wisconsin and Colorado joined the South Dakota Hereford enthusiasts for a great tour.

This year's two-day tour was held September 11 and 12 in eastern South Dakota and western Minnesota with headquarters in Brookings, SD.

Following was the tour schedule and here are some photo highlights. The next SDHA tour will be in 2017.

Day 1 — Friday, September 11:

Stenberg Show Barn, Colman, SD (Tricky's Herefords Guest)

Eggers Southview Farms, Sioux Falls (Renner), SD

Section 16 Cattle Company, Canton, SD (Sleepy Hollow Farms Guest)

Atkins Herefords, Tea, SD

Lunch Stop (Starmak Cattle Co. Guest)

Springwater Polled Herefords, Garretson, SD/Pipestone, MN

Schmidt Herefords, Pipestone, MN

Delaney Herefords, Lake Benton, MN

Supper Stop (Held in conjunction with their open house)

Day 2 — Saturday, September 12:

TSR Cattle Company, Elkton, SD

Phil Tesch, Goodwin, SD

Raap Hereford Ranch, Pierpont, SD

Leddy Herefords, Twin Brooks, SD

Ryan Ollerich, Clear Lake, SD

(continued on page 8)



Dave Stenberg and Cody Williams, Dave's grandson, welcomed the crowd to their tour stop which was at Mark Stenberg's farm. Dave's father Ove came to America, from Denmark, in 1912. The first registered Herefords were added to the farming operation in 1937.



Dick Wettlaufer, Tricky's Herefords of Winfred, SD displayed cattle at Stenbergs. He has shown and raised Herefords since the 1960s but the first registered Herefords he and wife Betty purchased were in 2004.



Phil Eggers welcomed the crowd to Eggers Southview Farms. Phil is also the manager of the South Dakota Hereford Association and was the tour organizer. He has raised registered Herefords since 1994.



Tim Eggers of Eggers Southview Farms looks on as Phil speaks about the cattle and history of the farm which was established in 1907 by C.F. Eggers. Tim and Phil have raised registered Herefords together since 1996.



Steven Muller and his dad, Glenn, had cattle on display at Stenbergs.



Erik Scott, Section 16 Cattle Co. of Canton, SD had a nice display of cattle along with Sleepy Hollow Farms as a guest.



Mark Johnson, Sleepy Hollow Farm, talked about his family's display at the Section 16 tour stop.



Heifer calf (515) at Stenbergs sired by Purple Chachi 652 ET.

YOU DON'T WANT TO MISS THIS!



Inaugural Elite RAAP HEREFORD RANCH **BRED COMMERCIAL HEIFER SALE**

TUESDAY, NOVEMBER 10, 2015, 1:00 P.M. CST

RAAP HEREFORD RANCH • PIERPONT, SOUTH DAKOTA • AUCTIONEER JOE GOGGINS 406-861-5664

**THIS GROUP OF BRED HEIFERS INCLUDES
HEREFORDS, BLACK ANGUS, F-1 BWF, & RED ANGUS**



A.I. SIRE - Churchill Sensation 028X



A.I. SIRE - Kramer's Apollo

ALL CALVES WERE PURCHASED FROM
REPUTATION LEADERS IN OUR INDUSTRY



All heifers ultra sounded by Dr. Dean Christianson
Bangs Vaccinated
SOLD MINIMUM OF FIVE OUT OF BREED GROUP

HEREFORDS

CALVES WERE PURCHASED FROM:

- VAN NEWKIRK HEREFORDS
- RAUSCH HEREFORDS (REGISTERED)
- WHISPERING PINE FARMS (REGISTERED)
- A. I. BRED TO CHURCHILL SENSATION 028X
47 CALVE 2-7-16 • 37 CALVE 3-1-16
- 40 BULL BRED TO SONS OF SENSATION AND
SONS OF NJW 10Y

RED ANGUS

CALVES WERE PURCHASED FROM:

- PEDERSON BROKEN HEART RANCH
(CAN BE REGISTERED)
- PIEPER RED ANGUS
- EMERALD EARTH CATTLE CO. (REGISTERED)
- 30 A.I. BRED TO LSF SAGA 1080Y - CALVE 3-1-16
- BULL BREDS TO PIE WAGONMASTER

BLACK ANGUS

CALVES WERE PURCHASED FROM:

- KREBS RANCH
- 64 A.I. BRED TO KRAMER'S APOLLO
- 15 A.I. BRED TO CHURCHILL SENSATION -
CALVE 2-7-16
- 7 A.I. BRED TO SITZ DASH - CALVE 3-1-16
- BULL BREDS TO FINAL ANSWER SONS
- FORTUNE TRIANGLE S
- 32 A.I. BRED TO THUNDER - CALVE 3-1-16
- 9 A.I. BRED TO SITZ DASH - CALVE 3-21-16
- BULL BREDS TO FINAL ANSWER SONS

BLACK BALDIES:

CALVES WERE PURCHASED FROM:

- OBERLITNER FARMS (THIS GROUP HAS A
STRONG INFLUENCE OF UPS 3027 HEREFORD
LINEAGE)
- 63 A.I. BRED TO SCHIEFELBEIN EFFECTIVE -
CALVE 3-1-16
- 15 A.I. BRED TO FINAL MOON (FINAL ANSWER
SON) - CALVE 3-21-16
- BULL BREDS TO FINAL ANSWER SONS

BROADCAST LIVE ON



SALE BOOK & VIDEO PREVIEW CAN BE VIEWED AT
www.raaphereford.com AND www.herefordamerica.com
after October 12th

Contact us for more information:

RAAP HEREFORD RANCH

Gene and Doretta Raap 41786 133rd St., Pierpont, SD 57468
605-325-3311 Office • 605-290-2602 Cell

www.raaphereford.com



South Dakota Hereford Tour

(continued from page 24)



StarMak cattle on display at Atkins Herefords. Many of the StarMak cattle have a heavy influence of Atkins and Delaney bloodlines.



Pete Atkins, Tea, SD, welcomed a large crowd to their farm. He and wife Laura with sons, Craig, Paul and Scott own and operate Atkins Herefords.



Marguerite Atkins, Pete's mother, took in the festivities. She and her husband Alvin along with Pete, purchased their first registered Herefords in 1971.



Matt Knock of StarMak Cattle Co., had cattle displayed at the Atkins tour stop. Matt and wife Erin purchased their first Herefords in 2005 from the Atkins family.



Jerry and Shelly Delaney had a large crowd at their place which also included an Open House and steak supper.



John E. Schmidt and Jeff Gerlach



Troy Williams and his mom Dorothy, Springwater Polled Herefords



Jenna, Joyce and John Schmidt.

There will be more South Dakota tour coverage in next month's issue.!



Impressive lineup at Schmidt Herefords near Pipestone, MN.

AUCTIONEERS

BALOG Auction Services, Inc.

Box 786
Lethbridge, Alberta T1J 3Z6
Canada
(403) 320-1980
1-877-320-1988
Fax: (403) 320-2660
www.balogauction.com



DALE STITH Auctioneer

5239 Old Sardis Pike
Mays Lick, KY 41055

cell 918-760-1550
dalestith@yahoo.com

Lynn Weishaar Livestock Auctioneer

13567 SD Highway 79
Reva, SD 57651

605/866-4670

Seth Weishaar Livestock Auctioneer

Bringing purebred & commercial cattlemen together.

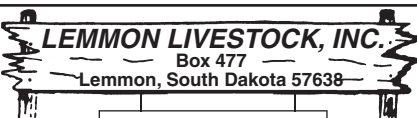
♦ Purebred

♦ Commercial

11639 Snoma Rd.
Belle Fourche, SD
57717
(605) 210-1124
(605) 892-2640



AUCTION BARN



Phone 605-374-3877
or 1-800-822-8853

Paul Huffman, General Manager • 605-645-2493
Chad Hetzel, Assistant Manager • 701-376-3748

• Sales Every Wednesday •

We feature
Hereford & Hereford-X Cattle in Special Sales
www.lemmonlivestock.com

October 5

This is the ad deadline for the
NOVEMBER issue of Hereford America.
MATERIALS MUST BE IN BY THEN.

jbh@herefordamerica.com

CALIFORNIA



1975 E. Roosevelt Rd.
El Nido, CA 95317

Gino & Mona Pedretti (209) 756-1609
Gino Pedretti Jr. (209) 756-2088
Mark St. Pierre (209) 233-1406



P.O. Box 391 • Gridley, CA 95948

Carl & Susan: 530-846-4354
Steven & Joseph: 530-864-2855
E-mail: ricencows@schohr.com



Selling bulls and heifers
by private treaty.
Contact us for semen
on Dakota.

CANADA

BAR PIPE Hereford Ranch

Generation after generation, same trusted brand.

Jay Cross: (403) 978-2767
Doug Finseth, Mgr.: (403) 938-7726
Okotoks, AB
www.barpipes.com

Hills Galore Stock Farms

ABBAY, SASKATCHEWAN

Alvin and Mary-Kate
Pawlitza
Julia, Alex
and Georgia

Tel | 306/689-2597
Email | mk@hillsgalore.com

Web | www.hillsgalore.com

Mailing Address | Box 179, Hazlet, SK S0N 1E0



Nelson & Paula Doenz

Phone: (403) 642-2380

Fax: (403) 642-2471

Brad & Veronica Doenz

(403) 642-7694

E-mail: doenzranches@gmail.ca
www.doenzranches.net

PO Box 362, Warner, AB T0K 2L0
3.2 km E of Warner on #504 & 3.2 km N on Rg Rd #170

Annual Sale: Nov. 19, 2015 at the Ranch

Lilybrook Herefords, Inc.

Practical, Efficient Cattle Are Our Livelihood!

Andy Schuepbach
Box 2044
Claresholm, AB, Canada
T0L 0T0



Phone: 403/625-4693 • Cell: 403/625-6316
Fax: 403/625-1500

andy@lilybrookherefords.com
www.lilybrookherefords.com



43342 Millar Avenue
Saskatoon, Saskatchewan S7K 7G9
Ph: 306-933-4200
Fax: 306-934-0744
Info@tbarc.com
Chris: 306-220-5006
Ted: 306-221-2711
Shane: 403-363-9973

www.BUYAGRO.com

ULRICH HEREFORD RANCH INC. "Performance Tested Herefords"

Hans Ulrich Peter Ulrich
(403) 625-2237 Ph/Fax (403) 625-2434
Cell (403) 625-1036

Email: peter@ulrichherefords.com

Website: www.ulrichherefords.com

Box 843, Claresholm, AB T0L 0T0

From Claresholm, 8 mi. (12.8 km) E, 4 mi. (6.4 km) N, 1/4 mi. E.



November 18, 2015
Medicine Hat, Alberta
Sale Time 1:00 pm sharp

Box 15
Eastend, Sask. S0N 0T0

Byron & Carolyn Templeton
306-295-3357 • Byron's Cell: 403-308-9971
Email: bltherf@gmail.com
Travis and Jocelyn Wasko
306-295-4000 • Travis' Cell: 306-295-7245

HEREFORD ITEMS



www.herefords.net

HEREFORD

WORKS

19941 Townline

Mokena

IL 60448

Unique Hereford Products Call (708) 479-5270

COLORADO



Marshall & Barb, Owners
Kevin, Manager
Windsor, CO 80550
970-674-5113
www.ernstherefords.com

Bull Sale • March 31, 2015 • 1 p.m.
at Shamrock Livestock • O'Neill, NE



High Altitude
PAP Tested
Since 1980 at 8,000 ft. +

FUCHS
HEREFORDS

3673 Co. Rd. 14
Del Norte, CO 81132
Mike 719/657-2519

• Bulls & Females for Sale •
mikefuchsherefords@gmail.com

Sidwell Herefords

54286 W.C.R. 27

Carr, CO 80612

Harold & Bryan Sidwell

970-897-2324

970-381-0264 cell



36th
ANNUAL SALE

Tuesday,
Oct. 20, 2015
800-351-5362

970-878-5362 • 970-270-4445 cell

Mary Strang & Family

2969 County Road 8 • Meeker, CO 81641

strangherefords@gmail.com

www.strangherefords.com

IDAHO



Shaw Cattle Co.

22993 Howe Rd.

Caldwell, ID 83607

www.shawcattle.com

Greg: (208) 459-3029

Sam: (208) 880-9044

Tucker: (208) 899-0455

Ron Shurtz: (208) 431-3311

THE BULL BUSINESS BRANDSM

ANGUS HEREFORD RED ANGUS



Neal Ward

673 N. 825 W. • Blackfoot, ID 83221

(208) 684-5252

HERD SIRES:

Remital Online 122L • TDP Eldorado
WSF Home Schooled • Mr. Hereford

IOWA



Johnson
Herefords

Since 1918

Registered Horned & Polled Herefords

Jack & Lynne Johnson

2165 240th St.

Milford, IA 51351

Jack: 712-260-3650 • Lynn: 712-330-7470

Good Doin' Genetics

WIESE & SONS

Bulls, Females, Semen

Now in our 100th year of producing top Herefords

P.O. Box 305

Manning, IA 51455

712-653-3678

www.wieseandsons.com

Hereford America



BE ON TIME!
Ads for the
November issue
HAVE TO BE IN
BY Oct. 5th.

Call 605/866-4495 or e-mail
jbh@herefordamerica.com

ILLINOIS



Baker Farms
1278 E. 20th Rd. • Streator, IL 61364
Fred • Debby
Sarah • Susan • John
Phone: (815) 672-3491 • Mobile: (815) 257-3491
Fax: (815) 672-1984

Superior Hereford Genetics

LOEHR HEREFORD FARM
P.T. "Pete" Loehr
113 W. Northgate Rd
Peoria, Ill. 61614
309/692-6026 or 1-800-937-BEEF

- The Best of the Best -
Line One, Canadian & Pure Gold

QUALITY & PERFORMANCE SINCE 1919



Milligan Herefords
481 Church Rd
Kings, IL 61068

JAMES (815) 562-4946 ROBERT (815) 562-6391 MALCOLM (815) 562-5879
(815) 761-1523

STEPHENS HEREFORD FARM
STEPHENS TRAILER SALES
Eby aluminum livestock

P.O. Box 168 • Taylorville, IL 62568
Mark and Kayla Stephens
217-825-7913 Cell
mark_stephens46@yahoo.com
Danny Stephens, Trailers • 217-824-2815

LIVESTOCK EQUIPMENT



PORTABLE & STATIONARY LIVESTOCK EQUIPMENT
FAWCETT ENTERPRISES, INC.
36111 211th Street ~ Miller, SD 57362-6814

For More Information Contact:
WAYNE FAWCETT
Phone 605/853-3930 • Cell 605/530-6024 • Fax 605/853-3310

CUSTOM DESIGNS AVAILABLE

www.herefordamerica.com

Hereford America

North America's Largest Privately Owned
Hereford Newspaper.

Also providing livestock video services,
video sales and clerking.
Call 605/866-4495 for more information.

www.herefordamerica.com


KANSAS



Alexander Farms
LINEBRED KING DOMINOS

John Alexander Family
2756 S. Donmyer Road
Gypsum, KS 67448-9414
Home: (785) 536-4931
alex farms@eaglecom.net
facebook.com/alex farmsbeef

— Breeding Stock, Semen & Flushes For Sale —



and
BERAN BROS.
ANGUS
HEREFORDS


1350 NE 100 Ave.
Claffin, KS 67525

Craig Beran, Jr. 620/587-3709
Gerald Beran, Jr. 620/587-3407
620/786-9703 (cell) 620/786-9569 (cell)

Sale March 21, 2016
CATTLE FOR SALE AT THE RANCH

BTS HEREFORDS

Bruce & Tracy
Schlickau
14601 South McNew Road
Hutchinson, KS 67501
Phone: 620-459-6576



Location: 5 miles south of Hwy 96 & 14 jct.
1 mile east, then 3/4 mile south

Quality Herefords by private treaty sales

The next issue of
HEREFORD AMERICA
is
NOVEMBER!
Please have your ads in on time.
E-mail: jbh@herefordamerica.com

Deewall Family

Mike Herefords
1074 Hwy. 1
620-635-6511
Mike & Jane
Deewall



Coldwater, KS 67029
620-635-5978 (cell)

www.deewallherefords.com

4V Ranch Douthit Herefords

Stephen Douthit Family
600 S Lorraine St • St. Francis, KS 67756
http://4vranchdouthitherefords.com



4V RANCH
STEVE
(785) 332-2323
cell (785) 332-7192

douthitstephen@gmail.com

Bulls & Heifers For Sale

Douthit Herefords
Walter, Megan & Chuck

Douthit-Downey Land & Cattle, LLC
Megan's cell (785) 332-8575
Chuck's cell (785) 332-4034
Walter's cell (785) 332-6095 1805 RS 115
St. Francis, KS 67756
www.douthitherefords.com
megan@douthitherefords.com

FLORY POLLED HEREFORDS

Mike Flory & Family
618 E. 800 Rd.
Lawrence, KS 66047
785/865-3444 • 785/979-3984
mike.flory@sbcglobal.net
JB Trojan & Polled L1

Performance tested since 1979.
Functional cattle with multi-trait performance.



FOR ALL YOUR NEEDS IN HEREFORD CATTLE
IN KANSAS AND SURROUNDING STATES

THE KANSAS HEREFORD ASSOCIATION
Tom Granzow, Secretary-Manager
765 South 3000 Road
Herington, Kansas 67449
785-466-2247 785-466-2226 (FAX)

kansashereford@tctelco.net
www.kansashereford.org

Gustafson Herefords
Gus, Deb and Shelbi Gustafson



7477 Davis Creek Road
Junction City, KS 66441
785-238-7306

I-70 exit 303... 7 miles South
Visitors Always Welcome

Granzow Herefords
Tom, Mary & Tobyn Granzow
765 South 3000 Road
Herington, KS 67449
785/466-2247 or 785/466-6438
www.granzowherefords.com



MEMBER OF THE PTP ALLIANCE

FRANK HUG & SONS

Bulls & Females
For Sale Private Treaty



2556 W. 125th Street
Scranton, KS 66537

Bob Hug 785/230-0434
Ed Hug 785/230-7597
fhug-sons@excite.com

JENSEN BROS.
Jensen Livestock Agency



Kevin & Sheila Jensen
P.O. Box 197
Courtland, KS 66939
785-374-4372
Kevin: 785-243-6397
jensenks@courtland.net
www.jensenbros.net

See us for your next herd sire!

MALONE Hereford Farm



1371 Road F
Emporia, KS 66801
Phone/Fax:
620-342-7538
Alton's Cell: 620-794-2358
ammalone@lcwb.coop

Alton, Marie, Brian, Dustin and Michelle Malone



MEITLER
1237 N. 13th Rd
Lucas, KS 67648

Gene: 785/658-5612
meitlercattle@wilsoncom.us
Darris: 785/658-5208
Clint: 785/658-7028
www.meitlercattle.com

MILL CREEK RANCH
20635 Hessdale Rd
Alma, KS 66401
David Breiner (785) 449-2841
David cell (785) 456-4790
Chad Breiner (785) 564-2091
Ryan Breiner (785) 207-3070
Bob and Derek Moore
www.millcreek ranch.com
millcreek ranch@embarqmail.com

SALE FEB. 23, 2016
MANHATTAN, KS

"Best of Both Worlds Sale" • 4th Mon. in March
12 noon at the ranch • Dwight, KS



Also selling
70 F-1 Black
Baldy heifers
with calves,
75 Fall bred
heifers
20 Quarter
Horses

70 Hereford
Bulls
55 Angus
Bulls

Jan: 785-482-3383 • Arden: 785-466-1422
Box 8, Dwight, KS 66849
E-mail: jakoleenbros@tctelco.net
www.oleenbrothers.com



Sandhill Farms
Registered Polled Herefords
Kevin, Vera & Tyler Schultz
2408 280th Ave., Haviland, KS 67059
Phone: (620) 995-4072 • Cell: (620) 546-4570
Tyler Cell: (620) 546-1574
e-mail: kevin@sandhillfarms.com
website: www.sandhillfarms.com
Sale 1st Friday in April

Schlickau Herefords
Since 1913
Cattle for Sale Private Treaty

Lois
James and Charlene
H: 620/465-2691
Cell: 316/734-3700
james.schlickau@renogov.org

H: 620/465-7749
14506 S. Victory Rd.
Haven, KS 67543
schlickauhfd@embarqmail.com

SMITH CATTLE



Reg./Com. Polled Herefords
Redfield, Kansas

Farm: 620/756-4592 • Cell: 620/365-1737

MINNESOTA

BELL'S RAWHIDE RANCH
Horned & Polled Herefords
F1 Baldy Heifers
Quality Cattle & Horses
6006 76th St. SW
Motley, MN 56466
Roy & Tammy Bell
(218) 397-2579
cell (218) 296-1960
2.5 miles East
of Leader

CARLSON FARMS
CF
1470 10th St. N.E.
Murdock, MN 56271
rbmrc1@gmail.com
Ross, Beth,
Mallory, Regan
320-366-3726
Rob, Jean,
Brett, Bailey, Brook
320-366-3970

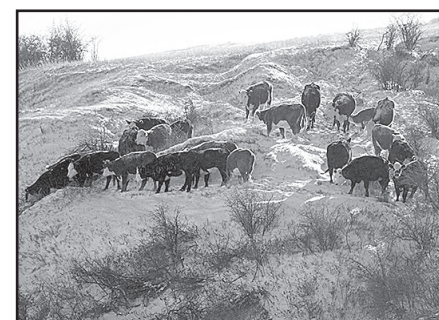
Dakitch Hereford Farms
David, Lorie, Michael & Mason Kitchell
Matthew & Darci Kitchell
3471 State Highway 200
Ada, MN 56510-9260
Quality, Performance Cattle For Sale
www.dakitchfarms.com 701-799-7690
dakitch@arvig.net Visitors Always Welcome

Delaney Herefords
Jerry & Shelly Delaney
2071 Co. Rd. 101
Lake Benton, MN 56149
Home: 507/368-9284 • Cell: 507/820-0661
jdh@delaneyherefords.com
www.delaneyherefords.com
Cattle for sale at all times.

Dose Family Herefords
Allan & Joleen Dose Family
22836 Highland Lane P: 507-964-2138
Arlington, MN 55307 C: 320-583-8002
allandose@frontiernet.net

JIM, JERI, JODY, JAIME HANSON HEREFORDS
37590 110th St
Comfrey, MN 56019
507.877.3631
jerihanson@hotmail.com
Jim's Cell 507.829.6756 • Jeri's Cell 507.828.2211
Jody's Cell 507.276.8577 • Jaime's Cell 507.276.8237

JMF Herefords and Sim-Angus
ANNUAL BULL SALE,
FIRST SATURDAY IN FEBRUARY
Jared, Makayla, Jaelyn and Tayton Flower
Holloway, MN
Jared: 320-413-0483 www.jmfherefords.com
Makayla: 605-690-6050 jmflower.11@hotmail.com



Jones Farms
Dave & Susan Jones
31490 E. State Hwy. 112
LeSueur, MN 56058
(507) 665-3962
(507) 317-5996 cell
Breeding Stock For Sale
Bulls, Heifers, Club Calves,
F1 Baldy Heifers

KLAGES HEREFORDS
Quality seedstock
for sale
Jeff & Mary Klages
64090 410th St
Ortonville, MN 56278
ph/fax (320) 273-2163
jmkklages@fedtelnet.net

JR Kroening Herefords
Registered Black Herefords
Richard and Julie Kroening
Fosston, MN
218-435-1223
juliek@gvtel.com

Krogstad Polled Herefords
Les Krogstad 3348 430th St.
Fertile, MN 56540
(218) 945-6213
les@krogstadpolledherefords.com
www.krogstadpolledherefords.com
Darin Krogstad 16765 Welch Shortcut
Welch, MN 55089
(651) 485-0159

Lawrence Herefords
Since 1957
2477 N.W. Main St. • Coon Rapids, MN 55448
Cattle at Princeton, MN
Bulls & Females For Sale
Doug & JoAnn (763) 755-4930
Bryan & Marytina (763) 389-0625
Bradley & Brigitte (612) 720-1311
E-mail: joannlawrence8@msn.com

Lind Polled Herefords
Since 1958
• Dan • Erika • Susie • Judy •
Contact: Dan Lind
200 E. Grove St.
Rushford, MN 55971
(507) 864-2298
cell: (507) 458-2080
e-mail: Lind2@acegroup.cc
Visitors Always Welcome

For All Your Livestock Video Needs
Call Marc Hotchkiss
605/490-1513

Lost Meadows Farm
Registered
Polled Herefords
Shawn & Dawn 36860 Rethwisch Lane
Frazee, MN 56544
218.334.4045
Dave & Rhonda Eckert 18513 405th Ave
Frazee, MN 56544
218.334.5732

Polled Herefords • Sales
McIver's Happy Acres
David, Maryln, Scott and Tom McIver
15624 340th Ave. Phone: 320-283-5776
Farwell, MN 56327 Fax: 320-283-6044
mcivers@runestone.net
www.mcivershappyacres.net

Nelson Polled Herefords
Phil • 507-629-3375 1616 Co. Rd. 11
Will • 507-626-0239 Tracy, MN 56175
E-mail: wnelson@westtechwb.com
Herd Bulls
NPH Prospector 351
NPH Active in EFBeeF U248 Fellis A246
T.P.R. NPH President Lamplighter 105
D.N.A. NPH Beau Lamplighter 229
Proud to be a Hereford Breeder

Minnesota Hereford Breeders
Jared & Makayla Flower, Secretary
(320) 413-0483
(605) 690-6050
1630 10th St. NW
Holloway, MN 56249
www.mnherefordbreeders.org

"Quality" not "Quantity"
Hereford Cattle
Schmidt Herefords
Pipestone, MN 56164
John A. Schmidt 787 70th Ave.
(507) 825-2383
cell: (507) 215-1037
John E. Schmidt 905 7th St SW
(507) 825-2786
cell: (507) 215-1174

ADS GOTTA
BE IN BY
November 5.
Hereford America
605/866-4445
www.herefordamerica.com
jbh@herefordamerica.com

SPRINGWATER SPH Polled Herefords
Chad, Lacey, Easton & Michoan Williamson
Pipestone, MN
507/825-5766
507/215-0817
springwater@svtv.com
Troy Williamson
Garretson, SD
507/597-6221
605/254-7875
twilliamson@alliance.com.net

SCHAFFER HEREFORDS
Lester & John Schaffer
FOR SALE:
Bulls
Females
Semen
64664 170th St.
Buffalo Lake, MN 55314
(320) 833-2050
(320) 582-1458 John cell
(320) 582-0489 Les

Whispering Pine Farms
Select Hereford Genetics
www.whisperingpinefarms.com
72196 325th St., Kimball, MN 55353
Jason & Marcy McDonald
Home: 320.398.6317 • Cell: 320.221.0280
jasonm@meltel.net

Looking forward to
the Go-Pher the Purple sale!

MONTANA



Byron & Pauline Bayers
248 Bayers Lane
Twin Bridges, MT 59754
(406) 684-5465
bayers@3rivers.net

Beery's Land & Livestock Co.
VIDA, MONTANA
59724

Private Treaty Sales
www.beeryherefords.com
Eastern Montana's finest Herefords
~ Horned & Polled ~ Matt & Krista
Joanne 406/773-5721
406/773-5710 cell 406/979-5720
Also selling Red Angus bulls & females

ADS FOR
the NOV. issue of
Hereford America
must be in by
October 5.

DALLAS POLLED HEREFORDS

Don Dallas
Box 532
Canyon Creek MT 59633
406/368-2244 Ranch
406/443-5110 Office
"Mountain Raised Performance Cattle"

DUTTON HEREFORDS



190 Sunnyside Ln.
Gold Creek, MT 59733
Dean (406) 288-3330

*Registered bulls and commercial
bred heifers for sale.*

EGGEN'S J BAR E RANCH

Since 1898



Jay-De
Arvid & Linda (406) 671-7149
(406) 895-2657 Lorrie
(406) 765-7068 cell (406) 765-8219
Box 292 • Plentywood, MT 59254



Mark, Della, Lacey & Jane'a Ehlke
PO Box 178 • Townsend, MT 59644
Mark: 406/439-4311 • Della: 406/439-4300
www.ehlkeherefords.com

FEDDES Herefords

www.feddes.com
TFeddes@msn.com

Dan (406) 284-6810 • cell 570-1602
Tim (406) 284-6990 • cell 570-4771
Marvin

2009 Churchill Road
Manhattan, MT 59741-8122



Genetics for Certified Hereford Beef®
REGISTERED POLLED HEREFORDS

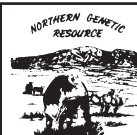
Fred, Doreen and Rebecca McMurtry
2027 Iris Lane Ranch 20 miles
Billings, MT 59102 east of Billings on
(406) 254-1247 Squaw Creek Road
(406) 697-4040 (cell) www.mcmurtrycattle.com
(406) 254-1247 (fax) mcmurtrycattle@gmail.com



MOHICAN
POLLED HEREFORD FARM
4551 State Rt. 514
Glenmont, OH 44628
Conard & Nancy Stitzlein (330) 378-3421
Matt Stitzlein (330) 378-3487



MOHICAN WEST
3100 Sportsman Park Road
Laurel, MT 59044
Phone/Fax (406) 633-2600
Terry Powlesland (406) 633-2810



NORTHERN GENETIC
RESOURCE

www.ngrbulls.com

REAL WORLD - HONEST - GUARANTEED BULLS

Ace & Tara Diemert
230 3700 Rd South
Lothair, MT 59461
406/432-3412
ngrhereford@northerntel.net

BREEDING HEREFORD
CATTLE SINCE 1945



Ads for the
NOVEMBER issue
MUST BE IN BY
October 5.

E-mail:

jbh@herefordamerica.com

Steer In Trailer Sales



New & Used
Stock & Horse Trailers
Flatbeds - Mats -
Cargo Trailers

Located at I-90 and Hwy. 287

29 Bronco Drive (406) 285-4300
Three Forks, MT 59752 Fax: (406) 285-4146
www.steerin.com 1-877-335-5372



BULLS FOR SALE
PRIVATE TREATY

STOREY
HEREFORD RANCH

10069 River Road
Bozeman, MT 59718

Chuck, Kathy & Katelyn Kohlbeck
Chuck, cell (406) 580-8255



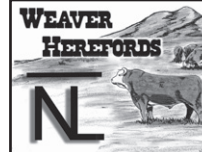
SHR@storeyherefordranch.com

THOMAS HEREFORDS

HORNED P.O. Box 330055 POLLED
Gold Creek, MT 59733

BULLS & HEIFERS FOR SALE

Richard & Shirley (406) 560-8122
Bruce (406) 544-1536
e-mail: bruce@thomasherefords.com
www.thomasherefords.com



Weaver Herefords
Don & Dolly Weaver
28108 Warrick Rd.
Big Sandy, MT 59520
(406) 386-2244

e-mail: dwhrfrd@gmail.com
www.weaverherefords.com

Heifers for sale private treaty in the fall.
Annual bull sale the first Monday in March.

NEBRASKA

(continued on next page)

BLUEBERRY HILL FARMS

Doug Bolte, Manager



Office Phone 402/371-0931
Home Phone 402/379-1432
Cell Phone 402/640-4048
Fax 402/644-8010
email: dbolte@telebleep.com

1103 So. Grandview Drive
Norfolk, NE 68701

ESTERMANN HEREFORDS

— Continuous Herd Since 1899 —
32 years of Canadian breeding

Joe, Marlene & Dan Estermann
35219 S. Somerset Rd.
Wellfleet, NE 69170
Phone: 308-963-4473
E-mail: jester mann@nebnet.net

Quality Cattle That Work

FISHER

Lowell & Carol 48979 Nordic Road
(402) 589-1347 Spencer, NE 68777



Frenzen Polled Herefords

Annual Bull
Production
Sale
March 22,
2016

*Females and Club Calves
for sale at private treaty.*

Galen, Gwen and Eric Frenzen
50802 N. Edgewood Rd. • Fullerton, NE 68638
Galen's Cell: (308) 550-0237 • Eric's Cell: (308) 550-0238
www.frenzencattle.com

GIBSON HEREFORDS

Line 1 Breeding

LARRY AND KAREN GIBSON
35570 W. Gibson Rd.
Wallace, NE 69169
308-387-4580 ~ 308-530-6435
kgibson@nebnet.net



Show Heifers & Steers

Randy Helms Cody Helms
73031 Rd 419 303-842-9071
Holbrook, NE 68948
308-493-5312

HENKEL POLLED HEREFORDS

Pure Station
Polled L1 Dominos

GENE ERIC
402/729-5866 402/239-9838

56095 - 715 Rd. • Fairbury, NE 68352
henkelhereford@hotmail.com

HUWALDTS HEREFORDS

86423 558 Ave • Randolph, NE 68771

Ed & Marsha
Home: 402/337-0784
Cell: 402/360-4387

Keith & Virginia
402/337-0307

Angie
Cell: 402/360-4796



Email: huwaldt@live.com
Website: www.edhuwaldt.com

Polled Hereford Bulls & Females For Sale at Private Treaty.
Visitors Always Welcome!

JB RANCH Polled Herefords

Milk, Muscle Performance & Weight

Bulls and Females
Always For Sale, Females
that Visitors Always Welcome! that
Perform Prolific + Disposition Produce

Jack & Bev Beeson 402/375-3404
Wayne, NE 68787 cell: 402/375-9027

Feed Efficiency, Carcass,
Moderate size, High gain
Documented proof

KEG HEREFORD RANCH

Ken & Marilyn Stephens
39753 906th Rd., Valentine, NE 69201
402-376-1267

LARSEN'S

PLD. HEREFORDS

CATTLE FOR BOTH PUREBRED
AND COMMERCIAL PRODUCERS

Larry Larsen
2497 Hwy 51
Decatur, NE 68020
402-349-5589



LINTON POLLED HEREFORDS

Art & Jean Linton
77414 Hwy 183
Miller, NE 68858
Home: (308) 457-1127
Cell: (308) 293-5816
ajlinton@frontiernet.net

www.lintonpolledherefords.com

(continued from previous page)

NEBRASKA

MELCHER HEREFORDS, INC.**For Sale**

Hereford Bulls • January 2016
Dehorned commercial heifers • Oct. 1
260 Hereford heifers bred Angus (SAV Platinum)
75 red baldy heifers bred Red Angus (Conquest)

Don: 402-336-7194 • Kevin: 402-340-6189
86288 Voyager Rd., Page, NE 68766

**MONAHAN
CATTLE
COMPANY**

Brand of Quality
Herefords

P.O. Box 306 • Hyannis, NE 69305

James (308) 458-8019
Bryan (308) 458-8021
Bob (308) 458-8024

NHA
NEBRASKA HEREFORD ASSC.

Melissa Buehler, Secretary/Manager
1519 F Street, Fairbury, NE 68352 - (402) 239-9712
www.nebraskaherefords.com



since
1907

**Ridder
Hereford Ranch**

John & Mary Ridder
Callaway, Nebraska

308/836-4430

mailbag@RidderRanch.com
www.ridderranch.com

• Sale first Thursday in February •

**SCHUTTE &
SONS**

1417 Road 2100
Guide Rock, NE 68942-8099
Ron Schutte
402-756-3462 • 402-746-4378 cell
rnschutte@gtmc.net
www.gtmc.net/schutte

Schroer Herefords

Lavern Schroer Family
2924 Road P ~ Nelson, NE 68961
402-756-7834
cell ~ 402-879-8056

Line One Herefords.

Bulls and females for sale by private treaty.

Cattle bred up, not fed up!

STANGLE HEREFORDS

601 Pink School Rd.
Marsland, NE 69354

BULLS, FEMALES & STEERS FOR SALE

Joyce: 308/487-5624

Larry: 308/487-5623

cell: 308/225-0535

www.stangleherefords.com

**STEWART HEREFORD RANCH**

Jay and Kaye Stewart
45717 875th Rd
Newport, NE 68759

Phone: (402) 244-5457

Cell: (402) 760-0961

**TEGTMEIER
POLLED HEREFORDS**

56th Annual Sale March 7, 2016
71556 609th Ave.
Burchard, NE 68323
Russ: (402) 865-5805
www.tegtmeierpolledherefords.com



Scott & Judy McGee
Blake McGee
Melissa & Brandon Buehler
Darci & Mick Pesek

1900 G Street
Fairbury, NE 68352
Scott's Cell: 402-300-2659
www.valleycreekranch.net

**VAN NEWKIRK
HEREFORDS**

Quality Herefords Since 1892

Sale: January 18, 2016

☆ Joe Van Newkirk
Oshkosh, NE 69154
Phone: 308/778-6049

www.vannewkirkherefords.com

**Vin~Mar
Cattle Company**

Owners: Vince, Mary, Ryan & Bryson Bickel ~ Jerry & Suzy Bottorff

Contact Vince at 308-282-0416 or Cell: 308-360-0336

2821 630th Rd
Gordon, NE 69343

www.vinmarcattle.net
Email: vmbickel@gpcom.net

Registered Black Angus & Hereford
Visitors Welcome Anytime!

OHIO

**Grandview
Hereford Farms**

Horned bulls always for sale.

Jay, Becky, Laramie & Codee Reed
5890 Moorefield Rd.
Springfield, Ohio 45502
(937) 342-0629
grandview5890@att.net

Buckeye
Hereford Association

Lisa Finnegan, secretary
440-320-6193
ohioherefordlady@yahoo.com

Sale • March 21, 2015 • Columbus, OH
www.BuckeyeHerefords.com

ADS for the
NOV. ISSUE
MUST BE IN BY
October 5.

E-mail: jbh@herefordamerica.com

TLR LAND & CATTLE CO., INC.
TLR HEREFORDS
15120 Akron Canfield Road
Berlin Center, OH 44401
tlrherefords@hotmail.com
(330) 547-4712 Home
(330) 206-5720 Tom's cell
Tri-State Elite VIII Sale • Oct. 2015
Call to request catalogs or view online
www.TLR-HEREFORDS.com
Certified • Accredited

OREGON

**Allison
HAY & HEREFORDS**

Mike & Carol Allison
70641 Kunze Lane • Boardman, OR 97818
(541) 571-7139
(541) 571-7313

**BIRD
HEREFORDS**

David and Lynda Bird
Phone & Fax: (541) 742-5436
E-mail: bird@pinetel.com
45863 Crow Rd.
Halfway, Oregon 97834

Chandler Herefords Inc.

Wide, Thick, Long, Correct, Beautiful, Balanced Herefords
126 Years in the business

541-523-2166

541-523-4265

George

Duane

541-403-0125

541-403-0124

17528 Chandler Lane
Baker City, OR 97814

www.chandlerherefords.com

E-mail: chandlerhereford1889@yahoo.com

ADS gotta be in by
OCT. 5
for the NOV/DEC
issue!

Hereford America
605/866-4495
www.herefordamerica.com
jbh@herefordamerica.com

**HARRELL
HEREFORD RANCH**

42590 SALMON CREEK ROAD
BAKER CITY, OR 97814

Bob Harrell, Jr. Don Schafer
541/523-4322 541/403-0008

Registered Hereford Cattle and Quarter Horses
ANNUAL SALE FIRST MONDAY IN MARCH

OKLAHOMA

Bowling Herefords

BR Joe Domino 1014 ET
Churchill Jury 1150Y ET
UPS Advance 0906
_D 408 Mr Harland 410 134X ET

Melvin Young Nancy Bowling
Herdsmen 580-362-5026
580-761-9257 nkbowling@yahoo.com

2211 S. 29th Co. Rd. Blackwell, OK 74631

DAY HEREFORDS

Hazlett-Turner Ranch Bloodlines
Disposition & Thickness Bred

"Located in the heart of the Old Hereford Heaven"
next ranch north of the famed former Turner Ranch on Hwy 1

Mr. & Mrs. Richard C. Day & Family
3284 St Hwy 1 W • Roff, OK 74865
580-456-7567

**Lents
Anxiety 4th Herefords**

Thick, substantive & efficient!

J.H. "Jim" Lents

Home 580-246-3560

25398 SW Coombs Rd
Indiahoma, OK 73552

Cell 580-704-3560
jhlents@sirinet.net



Certified Hereford Beef Volume Surpasses 51 million pounds

Certified Hereford Beef (CHB®) LLC experienced a record year of growth during fiscal year 2015 with 51.2 million lb. of product sold — a 2% increase compared to the previous year's total. Since 2008, CHB LLC has increased beef sales by 46%.

Celebrating its 20th year as a brand, the CHB program continues to expand its market share and meet the needs of its customers.

CHB LLC staff, along with the program's marketing partners, tout the advantages of CHB product in marketing differentiation when compared to other brands, along with the fact that it is a consistently tender, juicy and flavorful beef product. These advantages are fueling the brand's advance in both food service and retail markets.

Foodservice continues to provide the most growth opportunity for CHB LLC. As consumers continue to prepare fewer meals at home, CHB LLC staff has worked hard to supply a high-quality source of beef to restaurateurs and chefs through distributors around the country.

CHB LLC's foodservice division

experienced a 2 million lb. growth during FY 2015. The following new distributors contributed to this increase: Cash Wa Distribution, Kearney, NE; Sysco Virginia, Harrisonburg, VA; Crystal Creek Cattle Co., Ft Worth, TX; Golden Gate Meats, Sacramento, CA; and Sysco North Dakota, Fargo, ND.

The program also experienced growth in its export sales to the Caribbean, Central and South America markets. A new opportunity explored, implemented and becoming an asset to the program this fiscal year was CHB value-added products.

"Adding value to CHB primal cuts is proving to be a great asset to CHB's bottom line for retail and foodservice," explains Mick Welch, CHB LLC vice president of sales. "As our distributors explore what their customer base is seeking for home or dining out, CHB LLC staff is paying attention. Our customer base knows their businesses, and as their partner we want to respond to their needs and offer CHB value-added products that meets those needs."

The retail and foodservice divisions continue to build brand recognition

through programs like the National Grocery Association (NGA) tradeshow and radio marketing opportunities.

As the demand for CHB continues to grow, the supply of high-quality cattle must also continue to increase. CHB LLC staff, along with CHB packing partners, are continually working to not only increase the supply, but also increase carcass utilization.

In a cattle market that is offering record low cattle numbers, CHB LLC continues to find ways to utilize as much of each carcass as possible to meet the demand for CHB. This past year was a great example of doing just that. A total of 336,147 cattle were identified through CHB-licensed packing facilities during FY 2015 as eligible from a live specification standpoint, while more than 235,650 carcasses were certified for the program — a certification rate of 70% for FY 2015.

"Although CHB cattle numbers were down, by increasing carcass utilization, the tonnage sold ended up higher than ever before," explains Trey Befort, CHB LLC director of commercial programs.

"Supply for Certified Hereford Beef moving forward looks very positive. As the Hereford breed continues to gain market share and more commercial cattlemen are using Hereford genetics, the supply for CHB will continue to grow."

Since the beginning of CHB LLC 20 years ago, more than 5.3 million cattle have been identified, and more than 3.4 million carcasses certified to carry the CHB name at licensed packing partners. Continued growth of cattle numbers and CHB tonnage sold is expected moving forward as well as growth in the value of Hereford-influenced cattle.

"Our consumers have found the CHB-brand product meets their demand for a consistent, quality dining experience with a great value," says David Trowbridge, CHB LLC board president. "Our producers, staff and packer partners work as a team to provide the highest quality product and continue to build the CHB brand. Our legendary story and high-quality product value will continue to provide our CHB team with unlimited potential to provide the pull-thru demand for Hereford genetics."

NORTH DAKOTA

Behm Polled Herefords

Larry, Aneica,
Lindsey, Nicole and Logan Behm
5944 Hwy. 1806
Beulah, ND 58523
701-873-2646
e-mail: albehm@westriv.com



BOEHNKE HEREFORD RANCH

Registered Herefords Since 1946

Unpampered • Functional • Sound
Cattle for Sale at All Times

8424 4th Ave N.E.
Kramer, ND 58748
Jeff 701-359-4450 • Jared 701-201-0445
e-mail: jboehnke@utma.com

CARTER'S / PENNER POLLED HEREFORDS / LAND & CATTLE



Annual Bull Sale
at the farm in Rocklake, ND
1st Saturday in February

Jimmy Carter Jay & Malynda Penner
P.O. Box 55 28074 440th Ave
Rocklake, ND 58365 Freeman, SD 57029
701-266-5575 605-929-7314
mrs.penner@hotmail.com

DIAMOND R HEREFORDS

Randy & Julie Lemm Family
623 166th Ave. SE
Hillsboro, ND 58045
(701) 636-5465
rdlemm@yahoo.com

Merlin & Eunice Fornes

Quality grass-raised
Polled Herefords



12169 56th St. SE
Kathryn, ND 58049
(701) 924-8360

FRIEDT HEREFORDS

Production Sale Feb. 10, 2016
& Private Treaty

Gary, Kirsten & Aaron
8733 55th St. SW • Mott, ND 58646
701/824-2300 • Gary's cell: 701/290-7231
Megan & Dusty Dukart 701/290-7230
Lindsey & Drew Courtney
E-mail: gfriedt@hotmail.com
Website: www.friedtherefords.com

HELBLING HEREFORDS

Registered and commercial.
Bulls and females for sale any time.
— Private Treaty —

4785 Co. Rd. 83 • Mandan, ND 58554

Jim Fred Wayne
701-663-7123 701-663-0137 701-471-4391

E-mail: helbling95@msn.com

Registered Red Angus and Horned Hereford

LODOEN CATTLE COMPANY

"We're in the Business of Building Performance Bulls"

Call or Write for Sale Information

Leonard...701/245-6280 Leonard & Matt 10411 Hwy 83 1670 Cty. Rd. 6 NW
Myron...701/245-6494 Myron & Dusty 1670 Cty. Rd. 6 NW
Matt...701/245-6401 Westhope, ND 58793 Westhope, ND 58793
Dusty...701/837-9247 lodoen@ndak.net lodoen@westhope.ndak.net

MIDWAY POLLED HEREFORDS

7480 26th St.
Sheyenne, ND 58374

Doug & Ann: 701/996-3111
Bill, Karen, Katie & Whitney:
701/996-3300
midwayph@stellarnet.com
Visitors Always Welcome

MRNAK HEREFORD RANCH

ANNUAL SALE Feb. 14, 2016 SALE IN BOWMAN, ND

14503 91st St. SW • Bowman, ND 58623
Marlene 701/574-3124
Wayne, Jill & Robyn 701/574-3172
Terry & Andy 701/574-3193
Brent & Jenna 701-206-0604

www.mrnakherefords.com

NORTH DAKOTA HEREFORD ASSN.



Joana Friesz
Sec/Treas.

PO Box 67
New Salem, ND 58563
701/843-8750 • 701/400-8744 cell
701/843-8744 work
joana@northlandinsuranceagency.com

OLSON Hereford Ranch

Carl, Lindsay, Casey, Dru & Stetson Olson
16068 24th St SE • Argusville, ND 58005
ranch: 701/484-5779 • cell: 701/361-0684
Ed & Jeanne Olson • 701/238-3601

Red Power Bull Sale - Feb. 18, 2016
www.olsonredpower.com
E-mail: olsoncandc@aol.com

PELTON POLLED HEREFORDS



We produce Polled Herefords
for the Commercial Cowman

Craig 40 93rd Ave. NW
Kayla & Kain Halliday, ND 58636
cell: 701-260-0058 • 701-548-8243
craigp@ndgateway.com

Pollestad Herefords



4th Generation Hereford Breeder
Spanning 89 years

Steven W. Pollestad 2525 92nd Ave. SW
Ph. (701) 974-3970 Taylor, ND 58656
E-mail: pollestad@ndsupernet.com

Stroh HEREFORD RANCH

Over 50 years of Registered Herefords
TONY & MIKE STROH

10550 Hwy. 200 Killdeer, ND 58640
701/764-5217 701/573-4373

Annual Sale Feb. 4, 2016

Winter Ranch

Quality Polled Hereford Cattle
1990 10th St. NE
Goodrich, ND 58444

Jason & Linda • 701-884-2424
Kevin & Julie Bender • 701-884-2417


Visitors Always Welcome
Stop Anytime

SOUTH DAKOTA

... more South Dakota on next page


BAKER
HEREFORD RANCH
 P.O. Box 2769 • Rapid City, SD 57709
BULL SALE: Feb. 13, 2016
 Jim 605/923-2925 • 381-9519 cell
 Jeff 605/923-5632 • 381-2444 cell
 E-mail: jkbaker@rap.midco.net
 www.bakerherefords.com

JZ Bar JZ Ranches
 Polled Herefords
 Polled Limousin
 18542 326th Ave.
 Holabird, SD 57540
Annual Production Sale
Tuesday, Feb. 16, 2016
Don/Peg/Seth Zilverberg
605/852-2966
 web site: www.barjz.com
 email: cattle@barjz.com

DVORAK HEREFORDS

LAKE ANDES, SD
 Richard & Darlene
 Jeff & Tiphany 605/384-3914 Cell: 491-2068
 Boyd & Jenni 605/487-7090 Cell: 491-7090

EGGERS
Southview Farm
 Tim & Philip Eggers
 25748 S. 476th Ave.
 Sioux Falls, SD 57104
 (605) 351-5438
 ESFherefords@aol.com
1-29 Bull Run
 Bull Sale March 12, 2016
 Female & Frozen Edition Sept. 14, 2015

FAWCETT'S
ELM CREEK RANCH
 21115 344th Ave. • Ree Heights, SD 57371
605/943-5664
 Keith, Cheryl, Matt, Erin and Kristin
 Robert Fawcett
 Daniel, Kari, Hollis and Ivy Fawcett
 www.fawcettselmcreekranch.com
Bull & Female Sale • February 8, 2016

FINK
 POLLED HEREFORDS

 Mike & Marvin Fink
 P.O. Box 184 • 43610 SD Hwy 42
 Bridgewater, SD 57319
 Phone: (605) 729-2515
 Cell Phone: (605) 999-2075
 www.sites.google.com/site/finkpolledherefords
 E-mail: swamprat@unitelnd.com

FREDERICKSON RANCH
 **Pyramid Beef** 
Bull Sale
 First Saturday in December
 Mark & Mary Kay
 Frederickson
 19975 Bear Ridge Rd.
 Spearfish, SD 57783
 605/642-2139
 320/808-6691 (cell)
 Nate & Jayna
 Frederickson
 605/254-4872 (cell)
 Shawn & Sarah
 Tatman
 307/673-4381

Gant
 Polled Herefords
 Box 15 • Geddes, South Dakota
Mark • Phone (605) 337-2340
Dennis • Phone (605) 337-2564
 2 year-old Angus & Polled Hereford
BULL SALE
February 26, 2016
 at Platte Livestock, Platte, SD


Hanson's
Polled Herefords
 Sherry Hanson
 15477 409th Ave.
 Conde, SD 57434
 Home: 605-382-5868
 Cell: 605-350-7477
 hanson_herefords@hotmail.com

HILLSVIEW FARMS
Polled Hereford bulls
for sale private treaty Feb. 13, 2016
at the farm
 Darwin & Cindy Aman
 Andrew — Sam — Alex
 32824 119th St. • Eureka, SD 57437
 (605) 284-2721
 dcaman@valleytel.net

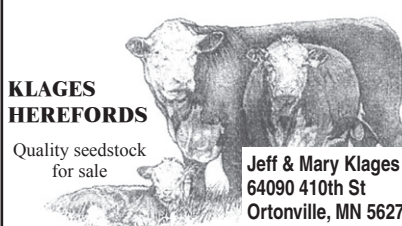
Hoffman
 HEREFORDS

 Colin & Mary Beth Hoffman
 (605) 439-3623
11341 357 Ave.
Leola, SD 57456-7105
 Visit our website at
 www.hoffmanherefords.com

➤ **HORA HEREFORDS** ◀
 Suppliers of Show Cattle
 Steers & Heifers
 Jim & Karla Hora
 27718 423rd Ave. • Parkston, SD 57366
 (605) 928-3008 • Cell (605) 770-3008
 E-mail: jhora@santel.net

JBN LIVESTOCK
 REGISTERED HEREFORDS

RANCH:
 22370 152ND PLACE
 BOX ELDER, SD 57719
 (605) 923-2366
Jim Bockwoldt
 www.jbnlivestock.com

K&B HEREFORDS
& ANGUS
 17309 322nd Ave.
 Onida, SD 57564
 E-mail: kbherefords@venturecomm.net
 Kirk: 605-973-2351 Cell: 769-9991
 Brooke: 605-973-2332 Cell: 769-9992
 Ken & Bonnie: 605-765-2335 Cell: 769-9999


KLAGES
HEREFORDS

 Quality seedstock
 for sale
 Jeff & Mary Klages
 64090 410th St
 Ortonville, MN 56278
 ph/fax (320) 273-2163
 jmkklages@fedtelldirect.net

Jerry Knippling
and Sons
 Registered and Commercial Herefords
Internet bull sale on
KnipplingCattle.com
 Gann Valley, SD 57341
 Randy Garin
 605/293-3493 605/293-3289

LEDDY
 Horned - Polled and Red
HEREFORDS and ANGUS
 Using the Best A.I. Sires Available.
 Bulls, Females and Club Calves For Sale.
 GENE WADE & LORI
 605/432-5182 REBECCA & ALLISON
 Cell: 605/530-1659 605/432-9054
 Cell: 949-0630
 47296 153rd Street • Twin Brooks, SD 57269
 Celebrating over 100 years in the same location
 e-mail: willedy@tnics.com

Nuhsbaumer
Herefords
Steve & Amy
 Kate, Casey & Charley
 17661 370th Ave.
 Zell, SD 57469
(605) 472-3524
 www.nuhsbaumerherefords.com
Visitors Welcome e-mail: sanuhs@nrctv.com
 Directions: from Zell, 3 m. West on Hwy 212, 5 1/2 South

OLLERICH BROTHERS
HEREFORDS
 Over 45 years in the Registered Hereford Business
 29188 303rd Ave
 Clearfield, SD 57580
 (605) 557-3246
 www.ollerichbrothersherefords.com
Bulls For Sale Privately
JEROME JAMES

 **Home Raised**
First Cross Black Baldy
Replacement Heifer Calves
Top End Sell at
Philip Livestock Auction
the end of April
 Bill Parsons
 19955 228th Ave.
 Milesville, SD 57553
 605-544-3247

 **RAUSCH**
HEREFORDS
 Hoven, SD 57450
 Visitors Welcome
• Sale Third Mon. in February •
 Vern • Jerry • Shannon
Phone 1-800-6HEREFORD
or 605/948-2146
 2 miles west of Hoven on Hwy. 20
 e-mail: rauschherf@rauschherefords.com
 Website: www.RauschHerefords.com

Ravine Creek
Ranch

 The Bischoffs
 Huron, SD 57350
SALE MARCH 5, 2016
• 605/352-5530 •
 E-mail: ravinecr@santel.net


Schuette

Land & Cattle Co., Inc.
 Raising quality commercial Hereford cattle for over 60 years.
 Jim & Judy Schuette 605-852-2789
 Jerry & Kathy Schuette 605-852-2046
 PO Box 266 slc@venturecomm.net
 Highmore, SD 57345 www.slc-herefords.com

Simon Herefords
 Low maintenance, feed efficient Hereford cattle
 Brian & Colleen Simon
 Seneca, SD 57473
 Home: 605/436-6725
 Cell: 605/765-4564
 bcsimon@venturecomm.net
 www.simonherefords.com
Selling bulls & heifers private treaty.

South Dakota
Hereford Association
 Phil Eggers, manager
 25748 476th Ave. • Sioux Falls, SD 57104
 Cell: 605-351-5438
 ESFherefords@aol.com
 www.southdakotaherefords.org

Ads for the
NOVEMBER issue
MUST be in by
October 5.
 E-mail:
 jbh@herefordamerica.com

Stenberg
Herefords

 Dave & Audrey Stenberg
 605/397-2594
 Cell 605/530-6002
 Cody Williams: 605/695-0931
 Colman, SD
Bull Sale March 14, 2016, Mitchell, SD

THORSTENSON
Hereford Ranch
 30491 131st Street
 Selby, South Dakota 57472
 Bill & Paula • 605/649-7940
 Darin & Danielle • 605/649-1972
• Sale April 9, 2016
 www.thorstensonherefordranch.com

Nicodemus Joins AHA As Mountain Region Field Rep

The American Hereford Association (AHA) and *Hereford World* (HW) are excited to announce Lander Nicodemus, Cheyenne, WY has joined the Hereford team. Nicodemus started Sept. 17 as the Mountain Region field representative.

In this position, Nicodemus will attend Hereford sales and events as well as assist breeders with marketing and genetic selection. He will also assist in educating members and commercial producers about AHA programs and other beef industry opportunities.

He will serve as the communication link between the AHA and breeders in Montana, Colorado, Wyoming and western Canada.

"We are extremely pleased to be able to hire an experienced and talented individual like Lander as the Mountain Region field representa-

tive," says Joe Rickabaugh, AHA director of field management and seed-stock marketing. "Lander brings to our team knowledge and experience in the marketing and feeding business. He will be an excellent addition to our field staff."

Nicodemus graduated from the University of Wyoming with a bachelor's degree in animal and veterinary sciences in 2008. Since then, he has been pursuing a master's degree and working in the livestock industry.

Most recently he worked as a field rep for Torrington Livestock Markets in Torrington, WY. He's also worked in the feedyard industry as the sales coordinator for Adams Land and Cattle Co. He's a talented meat evaluator; winning accolades in college before serving as the University of Wyoming meat judging team coach

for nearly three years.

"There's no doubt the past few years have been an exciting time to be involved in the cattle business," Lander says. "I've seen firsthand the benefits of Hereford-influenced cattle. I'm proud to get to represent an iconic breed of America. Hereford cattle have so many advantages to offer the commercial cattleman as he meets the challenge of feeding the world beef."

"I look forward to serving the Hereford breeders in the Mountain Region. Ben Brillhart did a great job representing the association in this area for many years. I have big boots to fill."

Lander will continue to reside in Cheyenne and can be reached at lnicodemus@hereford.org.



Lander Nicodemus, Cheyenne, WY, pictured at one of the Montana sales in September. He was recently hired as the Mountain Region Field Rep for the American Hereford Association and *Hereford World*, replacing Ben Brillhart.

**Ads for the
Nov/Dec issue
MUST BE IN BY
October 5.**

E-mail:
jbh@herefordamerica.com

... continued

SOUTH DAKOTA

THORSON HEREFORDS
022
Doug and Nancy Thorson
20967 E. Grindstone Rd
Quinn, SD 57775
605-859-3538
we02much@gwtc.net
www.thorsonherefords.com
Visitors welcome at the Ranch

Wagner
HEREFORDS
Reese & Elly Jo Wagner
39365 182nd St.
Redfield, SD 57469
Reese 605-450-1085
Elly Jo 605-450-9790
wagnerherefords.com
Bull Sale • Monday, March 21, 2016

POLLED HEREFORDS
Since 1947
Bulls and Heifers for sale at the farm
DEL & RUTH WOOD
WOODCREST FARMS
Cresbard, SD 57435
(605) 324-3289

ZENS HEREFORDS
*Bulls, Heifers and Show Steers
Private Treaty Sales*
Harley, Matt & Mark Zens
Canova, SD 57321
Phone (605) 523-2655
Matt (605) 310-5782 cell
hrzens@yahoo.com
www.zensherefords.com

SERVICES

A₂Z
PRINTING
PO Box 35 701-523-4656
306 Hwy 12 W Ste C 888-768-4656
Bowman, ND 58623 Fax 701-523-4756
email: a2zprint@ndsupernet.com

American Live Stock
A MARKEL Insurance Company
Cheri & Jim Gies
Cattle and Equine Insurance
19381 CR 74
Eaton, CO 80651
Tel/Fax (970) 454-3836
Cell (970) 590-0500
cmgies@msn.com

HANDEL MARKETING, LLC
Private Treaty Sales • Ring Service • Consulting • Insurance
Buying & Selling Commercial or Registered Feeder Cattle & Breeding Stock
.....
Art & Pat Handel
1501 Summit Blvd.
Rapid City, SD 57701
605/399-9278 or 605/391-8233 (mobile)
www.arthandelscattle.com

BEN ROUDABUSH Ph. 605-996-9100
Manager Fax 605-995-0611
broudabush@crinet.com
Genex
Dakota Sire Service
Semen Collection, Freezing, Shipping,
Storage, Sire Housing & Conditioning
40275 - 257th Street Mitchell, SD 57301

HIGH PLAINS GENETICS, LLC
For All Your
Equine & Bovine
Reproductive Needs
(605) 787-4808
www.high-plainsgenetics.com

NORTHERN PLAINS Embryo Transfer Co.
W.J. HINES, DVM
PO Box 1019
Martin, SD 57551
(605) 685-2074

OLD WEST ULTRASOUND
PO Box 1019
Martin, SD 57551
605-685-2074
Dan Hines Bill Hines, DVM
605-685-8222 605-685-5174
Providing Professional Carcass
Ultrasound to the Old West Region

Keyher Embryonics
7195 Thorpe Road
Belgrade, Montana 59714
Mark 406/539-4656
Jeanne 406/580-3490
reyherembryonics@aol.com

Streamline GENETICS
Your Hereford Headquarters!
Alex Cosgray Semen/Embryos/Flushes
Consulting/Marketing/Sales
765.490.6286 2704 N 300 E
Monticello, IN 47960
alex@streamlinegenetics.com streamlinegenetics.com

Steer In Trailer Sales
New & Used
Stock & Horse Trailers
Flatbeds - Mats
Cargo Trailers
Located at I-90 and Hwy. 287
(406) 285-4300
29 Bronco Drive Fax: (406) 285-4146
Three Forks, MT 59752 1-877-335-5372
www.steerin.com

El Molino Sawmill
P.O. Box 1106
Alto, NM 88312
Phone: 575/336-1237 • Cell: 575/808-0860
Email: elmolino@valornet.com
www.elmolinosawmill.com

TEXAS

Barber Ranch
 Barber Ranch 806-235-3692
 Justin Barber 806-681-5528
 Brett Barber 806-681-2457
 Terri Barber 817-727-6107
 Jason Barber 817-718-5821
 Dale Barber 806-673-1965
 Mary Barber 806-930-6917
 10175 F.M. 3138 • Channing, TX 79018
 barberranch@wildblue.net • www.barberranch.com

PPHF
 "Prefix of Performance"
PRAUSE POLLED HEREFORD FARMS
 1957 Morris Community Rd.
 Yoakum, TX 77995
 www.prausepolledherefords.com
Leslie & Gay Prause 361-741-6495
Robert, Lorna & Kaci Herman 361-293-5324
 361-293-4213 361-293-1533

TRIPLE L RANCH
 BOBBY & JARED LIDE
 714 FM 1366 • MEXIA, TX 76667
 (P) 254.739.2911 • (CELL) 254.625.3800
 JARED (CELL) 254.625.3806
 www.triplelblackherefords.com

A designer knows he has achieved perfection not when there is nothing left to add, but when there is nothing left to take away. ANTOINE DE SAINT

UTAH

Ekker Herefords
 Jim Ekker 435/839-3454 Cell # 435/840-2699
 1004 Ekker Lane • Vernon, UT 84080
 ~ Bulls & Females for Sale ~
Breeding Quality Herefords Since 1985

Line One
performance bred Herefords
 www.johansenherefords.com
 Castle Dale, UT
 Jonathan 435-650-8466
 Craig 435-820-8490
JOHANSEN HEREFORDS

WASHINGTON

Dick & Karen Yoder 8941 Glendale Rd. Custer, WA 98240 (360) 354-2945
 Dale & Tammy Yoder Katie & Clark 9279 Weidkamp Road Lynden, WA 98264 (360) 354-6605
Yoricka Farm, Inc.
 Registered Herefords
 email: YorickaFm@aol.com

WISCONSIN

POLLED HEREFORDS POLLED SHORTHORNS
Boettcher's
BROOKVIEW ACRES
 45 Years of producing working seedstock
 Brandon: 715/533-2470
 Butch: 715/597-2036
 cmboettcher@centurytel.net
 www.brookviewacres.com
 W 16163 US Hwy 10 • Fairchild, WI 54741

HUTH
POLLED HEREFORDS
 Jerry and Maryann Huth
 W9096 Co. Trunk AS
 Oakfield, WI 53065
 (920) 583-3223
 huth@wildblue.net • www.huthcattle.com

KIS
 POLLED HEREFORDS
KEVIN L. STORK
KODY L. STORK
 626 EAST THIRD
 NEW RICHMOND, WI 54017
 (715) 381-3770 Kevin
 (715) 220-0021 Kody
 (715) 246-2580 fax
 E-mail: kstork@presenter.com

LIETZAU HEREFORD FARM
 Harold & Connie Lietzau
 Tammy, Dan, Kiara & Austin
 Troy, Michelle, Jaydon, Devon & Jocelyn
 Taylor & Ty
 7477 Iband Ave. • Sparta, WI 54656
 Cell 608/633-2875

OWEGO
STOCK FARM
 REGISTERED POLLED HEREFORDS
MARVIN ESPENSCHIED FAMILY
 (608) 543-3778 12044 State Hwy 78
 Fax: (608) 543-3824 Argyle, WI 53504
 Email: wlbaosf@mhct.net
 Thanks to our customers!

WIRTH
Herefords
 NEW RICHMOND, WI
 Gene & Cheryl Wirth
 (715) 247-5217
 Lance Brent
 (715) 377-6876 (715) 760-1727
 www.wirthshowcattle.com

WYOMING

The Berry's WHERE COWMEN BUY BULLS
Bull Sale October 19, 2015
Jay and Janice Berry
 3049 County Road 225
 Cheyenne, WY 82009
 (307) 634-5178
 E-mail: jaberryherefords@msn.com
 www.WhereCowmenBuyBulls.com

LARGENT and SONS
 Hereford Cattle Since 1902
 • Sale November 19, 2015 •
 P.O. Box 66 • Kaycee, WY 82639
 (307) 738-2443 or (307) 267-3229
 www.largentandsons.com
 largentandsons@yahoo.com

WYOMING BULL POWER
HOLMES
HEREFORDS
Drake Ranch
 Dick Drake • 307-632-6027
 2400 County Rd. 226
 Cheyenne, WY 82009
 • Visitors Always Welcome •

McClun's Lazy JM Ranch
 Producing problem free
 Polled Herefords and Angus.
SALE April 9, 2015
 Private treaty sales any time.
Jim & Jerri McClun
 1929 Road 60 • Veteran, WY 82243
 Ph. 307-837-2524
Jeff & Kari McClun
 1930 Road 60 • Veteran, WY 82243
 Ph. 307-837-2554 • jkmcclun@wyomail.com

Hereford & Angus Bulls
Replacement Heifers
GEORGE • RUBY
OCHSNER HEREFORDS
 & SONS
Private Treaty Sales
 George (307) 532-5892 • Blake (307) 532-3282
 10672 VanTassell Rd.
 Torrington, WY 82240
 www.qualitybulls.com

Before God we are all equally wise -
 and equally foolish.
 ALBERT EINSTEIN
 I do not feel obliged to believe that the
 same God who has endowed us with
 sense, reason, and intellect has intended
 us to forgo their use.
 GALILEO GALILEI

MIDDLESWARTH RANCH
 Registered Herefords
 • Torrington, WY •
 Jay, Marsha and Jessica
 307.532.5427
 6MBulls@hughes.net
 www.middleswarthherefords.com

STICKS & STONES RANCH
 • Gene & Cindy Stillahn and Family •
 Christopher, Amy and Trey
 3902 County Road 203
 Cheyenne, WY 82007
 (307) 635-6716 • cell (307) 421-1592
 E-mail: gcstick@millect.com

THE NED & JAN WARD
QUALITY PROGRAM
 ...honest, efficient and predictable Polled Herefords.
 Ned, Jan & Bell Ward
 247A Decker Road • Sheridan, WY 82801
 Phone and Fax 307/672-3248
 Ned (c) 307/751-8298 • Jan (c) 307/751-9470
 Email: njwardherefords@gmail.com
 www.NJWHerefords.com
 Cody & Shawna Chabot
 307/750-2543 • (c) 541/410-5201
 Bulls • Females • Semen • Embryos

S.E. West & Sons
 • Herefords since 1949 •
 Selling Private Treaty and at
 Black Hills Stock Show
 Nebraska Cattleman's Classic
 Bulls & Females • Club Calves
 Lusk, Wyoming
 S.E. 307/340-0148
 Brett 307/334-2546

WHITE
Cattle Company
 Joel & Karri White
 912 Fullerton Avenue
 Buffalo, WY 82834
 C: 307.217.0367 H: 307.684-7881
 whitecattlecompany@gmail.com
 Bulls, Females, Embryos & Semen
 Available

Starts the second Saturday of August every year.
 307/358-2398
 wystatefair.com
 wsf@netcommander.com
 (Supported by Converse County Tourism.com)

JBN LIVESTOCK

REGISTERED HEREFORDS

Complete Dispersion

Horned & Polled

Sat., October 24, 2015

St. Onge Livestock, St. Onge, SD • 12:30 PM (Mtn. Time)

66 HEAD SELL

34 young cows (2008-2013) • 18 bred heifers
10 bull calves by Irishman • 2 heifer calves by Irishman
• 2 herd sires



CSC 100W IRISHMAN 26

DOB: 3/17/12 • Reg. #: P43269030

Sire: NJW 73S M326 TRUST 100W ET

BW 1.6 WW 62 YW 105 MM 30 M&G 61 REA .81



JBN 4R MSU REVOLUTION 115

DOB: 2/8/11 • Reg. #: P43183623

Sire: MSU TCF REVOLUTION 4R

BW 3.0 WW 58 YW 95 MM 20 M&G 49 REA .77



SPH 9R SOLID GAL 15T 40W

DOB: 4/3/09 • Reg. #: P43009330

Sire: SPH 5134 ROCK SOLID 15T • Dam: RJ MS STARBUCK 9R

BW 4.6 WW 53 YW 83 MM 17 M&G 44 REA .61 CHB \$26



JBN 4R MISS REVOLUTION 113

DOB: 2/6/11 • Reg. #: P43183648

Sire: MSU TCF REVOLUTION 4R • Dam: SPH 6T ROCK SOLID 8W
BW -0.3 WW 55 YW 89 MM 23 M&G 50 REA .82 CHB \$28



JBN MISS TRUST 100W 54

DOB: 2/18/15 • Reg. #: P43563253

Sire: CSC 100W IRISHMAN 26 • Dam: JBN 4R MISS REVOLUTION 113
BW 0.7 WW 59 YW 98 MM 26 M&G 55 REA .82 CHB \$32



LIND MISS SHAY 5W

DOB: 1/12/09 • Reg. #: P42990015

Sire: CKP RAFTSMAN 0724 • Dam: LIND MIS ROBYN 20P
BW 2.8 WW 47 YW 78 MM 21 M&G 44 REA .40 CHB \$21



JBN L1 DOMINETTE 170

DOB: 7/29/11 • Reg. #: 43218728

Sire: KB L1 DOMINO 764T • Dam: JBN L1 DOMINETTE 83
BW 1.1 WW 49 YW 79 MM 24 M&G 49 REA .20 CHB \$24



JBN L1 DOMINETTE 030

DOB: 2/17/10 • Reg. #: 43077864

Sire: KB L1 DOMINO 764T • Dam: JBN L1 DOMINETTE 68
BW 2.6 WW 50 YW 88 MM 24 M&G 49 REA .20 CHB \$25

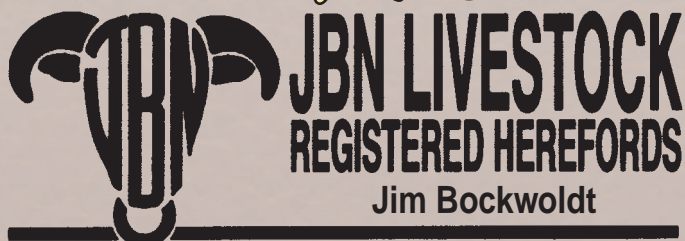


JBN MISS TRUST 100W 430

DOB: 3/28/14 • Reg. #: P43471742

Sire: CSC 100W IRISHMAN 26 • JBN MISS ADVISOR 27
BW 2.1 WW 61 YW 105 MM 24 M&G 54 REA .62 CHB \$35

Go to website for **VIDEOS** and updates: www.jbnlivestock.com



Jim Bockwoldt

22370 152nd Pl. • Box Elder, SD 57719

605/391-0932 - Cell

jbnlivestock@rushmore.com

For catalog or more
information contact:

Online Bidding
Through
CattleUSA.com

Sale managed by:



Art Handel

605/391-8233

handelhereford@aol.com

Marc Hotchkiss

605/490-1513

marc@herefordamerica.com