

The Largest Privately Owned Hereford Newspaper in North America

The one that's read "from cover to cover." • Visit us on the web at: www.herefordamerica.com

Serving Commercial Cattlemen & Registered Hereford Breeders

Vol. 21, No. 6

Published by: Hereford America, Inc. • 13823 Beaver Creek Place • Reva, SD 57651

March 2018

Editorial Comments...

Jill Bayers Hotchkiss



Jill Hotchkiss

I don't remember having a bull sale season as cold as this one! In the month of February we have 35 sales on the calendar and we try to make it to quite a few. The ones I attended in mid-February, mostly in North and South Dakota, were bitterly cold with a hefty amount of wind. While the windchill factors weren't quite what they were in Montana, there were quite a few days that were about 0-5 degrees (F) with a 20 to 30 mph wind, making it feel about 20-30 below zero. My northern friends are probably laughing about that. One
(continued on page 36)

Byron Bayers



Byron Bayers

It has been a tough winter in parts of *Hereford America* Country. Northeastern Montana recorded a 50 below temperature last week and it was not uncommon for temperatures to be in the 20 to 30 below range. As I write this article it is 15 degrees below zero here. Heavy snow has hit Montana the Dakotas, Wyoming and parts of Oregon and Washington. It was reported that the Van Newkirk sale was held on a 35 below degree day and yet the people came and purchased cattle in that sale at a high dollar figure.

As I watch The Weather Channel daily and see the storms being
(continued on page 4)

Strong Ranch Woman Continues Long History of the Empire Ranch

Hulett, WY – Judy McCullough never thought she'd be running a ranch by herself, but when her husband Curt passed away in 1995, the rancher pulled her hat down tight and decided to keep on ranching.

"When Curt died in 1995, cow prices were terrible. I couldn't bring myself to sell two men's life work for peanuts," she says. "Then, by the time the prices came back up, I wanted to keep ranching."

McCullough admits to being "scared half of the time those first five years."

"I never worked harder in my life," she continues. "I had to do everything I expected my partner to do. But I had good advisors."

"My dad was still alive, and he was a good stockman," she says.

She credits her father and neighbor Skip Waters

for being her greatest supporters and teachers.

"I got a university education from those two," she admits.



Judy McCullough, Empire Ranch, has successfully maintained the ranch on her own for over 20 years, while also getting involved in the issues facing the agriculture industry.

Hereford heifers are bred to Longhorn bulls. After their first calf, the Hereford cows are bred to Hereford bulls.

Even though she had a hired man to assist with the work, there was still plenty of learning to keep the ranch running.

On the ranch

Today, the ranch has Herefords with a twist.

"We put Longhorn bulls on our yearling heifers," notes McCullough. "first for the calv-

ing ease. Then, those Longhorn bulls keep the neighbors' bulls out."

She continues, "In addition, those Longhorn-cross calves sure teach a

young cow to keep a calf with her at all times. We don't have 200 calves in the back when we're trailing them. We put them through the gate, and in a couple of minutes, there is no bawling."

She admits the Longhorn calves aren't worth as much in the fall, so they keep them and sell them as yearlings.

"They are worth as much as any other yearling," McCullough says.

She uses Hereford bulls on the second-calf heifers and the older cows.

Work on the ranch

McCullough calves from April 15 until around June 15.

"We calve later because we calve all of the cows in the open, except for the two-year-old heifers," she explains. "It's rare we need to pull one, but things happen, and sometimes, we'll need to have them close."

Hereford bulls are purchased from Largets out of Kaycee, WY, Fawcett Herefords from Ree Heights, SD, Mrnak Herefords from Bowman, ND and Micheli Herefords out of Ft.

(continued on page 8)

KNOLL CREST'S

TOTAL

Featuring

100 BULLS

85 Commercial Bred Heifers

Performance

Saturday, Noon

APRIL 14, 2018

Hereford Sale Bulls AVERAGE:

CED	BW	WW	YW	Milk	SC	REA	MARB	BMI
+6.7	+1.4	+62	+103	+29	+1.4	+.55	+.36	+30
Top 15%	Top 15%	Top 10%	Top 5%	Top 15%	Top 4%	Top 10%	Top 2%	Top 3%

AHA GE-EPD

Every bull selling has Genomically Enhanced EPDs.



BEHM 100W Cuda 504C
His First Sons sell!

CED	BW	WW	YW	MILK	SC	REA	MARB
+11.0	-0.9	+60	+104	+34	+1.4	+.81	+.48



KCF Bennett Homeland C34
His First Sons sell!

CED	BW	WW	YW	MILK	SC	REA	MARB
+7.4	+1.2	+65	+111	+33	+1.1	+.53	+.50



KCF Bennett Provident B284
Sons sell!

CED	BW	WW	YW	MILK	SC	REA	MARB
+9.6	+1.2	+62	+92	+28	+1.6	+.61	+.31



KCF Bennett Devout B716
Sons sell!

CED	BW	WW	YW	MILK	SC	REA	MARB
+10.6	-0.3	+60	+92	+37	+1.3	+.67	+.30

LiveAuctions. TV

PRIVATE TREATY FEMALES

An outstanding selection of fall-bred females now available.

Other sires include Gerber Anodyne 001A, Hyalite On Target 936, Churchill Sensation 028X, NJW 73S M326 Trust 100W.

James D. Bennett
(434) 376-7299
Paul S. Bennett
(434) 941-8245
Dalton G. Bennett
(434) 664-7946



Jim G. Bennett
(434) 664-7935
Brian R. Bennett
(434) 664-8309
Scott R. Bennett
(434) 660-7268

P.O. Box 117, Red House, VA 23963
Martha Johnson, Office Manager (434) 376-3567
Fax (434) 376-7008
knollcrest@knollcrestfarm.com
www.knollcrestfarm.com



Sales & Events CALENDAR

March

- 1 Calgary Bull Sale
Calgary, AB
- 1 Jensen Bros. Bull Sale
Courtland, KS
- 3 Ravine Creek Ranch Sale
Huron, SD
- 3 McIver's Happy Acres
Bull Sale/Open House
Farwell, MN
- 5 Harrell Cattle Co.
Bull Sale
Baker City, OR
- 6 S&S Polled Herefords
Bull Sale
Guide Rock, NE
- 7 L Bar W Cattle Co.
Production Sale
Absarokee, MT
- 7 Sachtjen-Gibson Bull Sale
Ogallala, NE
- 10 Ft. Keogh Line One Sale
Miles City, MT
- 10 Tricky's Herefords Sale
Madison, SD
- 10 1-29 Bull Run
Sioux Falls, SD
- 12 Tegtmeier Polled Herefords
Production Sale
Burchard, NE
- 12 Holden Herefords
Bull Sale
Valier, MT
- 13 Cooper Hereford Ranch
Bull Sale
Willow Creek, MT
- 14 Snowshoe Cattle Co.
Pompey's Pillar, MT
- 14 Vin-Mar Cattle Co.
Bull Sale
Rushville, NE
- 15 Evenson Angus Sale
Lemmon, SD
- 16 Starmak Cattle Co.
Bull Sale
Tea, SD
- 19 B&D Herefords Bull Sale
Claflin, KS
- 19 Wagner/Baxter Herefords
Bull Sale
Redfield, SD
- 20 Englehaupt/Tucker
Bull Sale
Butte, NE
- 24 Sandhill Farms Bull Sale
Haviland, KS
- 26 Oleen Bros. Bull Sale
Dwight, KS
- 27 Frenzen Polled Herefords
Bull Sale
Fullerton, NE
- 28 Ned and Jan Ward Sale
Sheridan, WY

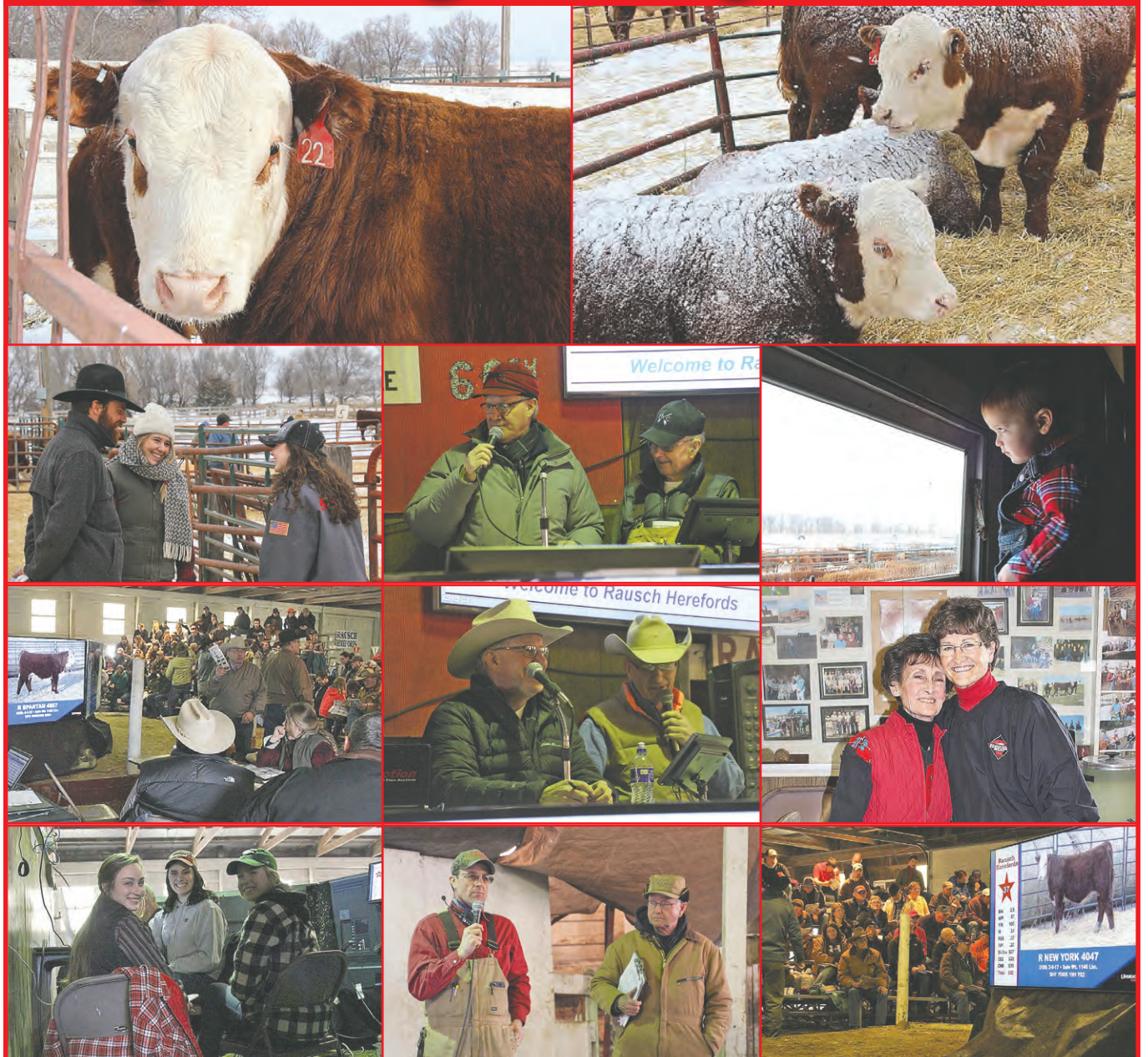
- 31 DaKitch Hereford Farms
Production Sale
Ada, MN
- 31 Ernst Herefords Bull Sale
O'Neill, NE

April

- 6 Wilson-Lees Sale
Kisbey, SK
- 12 Larry Larsen Bull Sale
O'Neill, NE
- 12 McClun's Lazy JM Sale
Torrington, WY
- 14 Knoll Crest Farms
Red House, VA
- 14 Thorstenson Herefords
Production Sale
Selby, SD

- 20 Bartling Herefords Sale
Burke, SD
- 20 Morgan Ranch Bull Sale
Burwell, NE
- 21 Stuber Ranch Sale
Bowman, ND

**Thank you to our customers
for a very successful sale!**



— Watch for our private treaty offerings this Spring —

Sale results and customer service information on RauschHerefords.com

Check out our home page for our marketing programs RauschHerefords.com

Please call, write or e-mail for more information:

E-mail: rauschherf@rauschherefords.com



RauschHerefords.com

14831 Hereford Road • Hoven, SD 57450

(605) 948-2146 or 2157 or 2375

Jerry

Shannon

Vern & Joel

Located 2 miles west of Hoven on Hwy. 20 and 47

37th Anniversary



Over 800 dams
have qualified!
America's No. 1 Dams
of distinction herd.
(Based on efficiency)

Byron's Editorial...

(continued from page 1)

reported throughout the country I am reminded of a trip years ago that is still vivid in my memory. It was after our fall bull sale and we had sold about 10 bulls into the far eastern end of Montana, and I was planning to deliver the bulls with a friend of mine, Remi Monforton, who was a prominent Hereford cattleman in Montana years ago.

We prepared the truck for the trip, a Ford F-600 with an 18-foot stock bed on it, and since it was winter we carried along chains and other emergency equipment in case we had difficulty on the trip, however when we left Twin Bridges, the weather was quite nice. The Ford was a fairly new truck, but a little under powered when it had a full load of bulls, and the load was full, the weight was about 7 to 8 tons when we left home.

The plan was to deliver the bulls along the route until we got near to Glendive, when the last of the bulls

would be left at their new home. Glendive is about 500 miles from Twin Bridges and only 30 miles from the North Dakota border. Knowing this would be an extremely long day we started the loading process at 3 in the morning and by 4 a.m. we were on the road with the bulls. Our route took us to the Interstate at Whitehall, then to Bozeman, Livingston, Billings, and on into eastern Montana, where we started delivering bulls. We unloaded part of the cattle at a town called Custer and then on to Forsyth where more bulls were unloaded.

When we got to Forsyth it was starting to darken and the weather began to change; it cooled drastically and the snow began to fall at a greater pace. Even though we were now on rural area roads, and even though the Ford was not very powerful, we motored our way up to Jordan, a small town in the northeastern part of Montana that is a typical small cow town. The snow was very heavy at Jordan and I would estimate that it was about 8 inches deep at that time.

Remi and I had stopped to talk things over and as we were doing so a state snowplow came by headed east so we figured things would be fine, as we would just follow the snowplow on into Circle and spend the night, delivering the rest of the bulls in the morning.

As I looked in my rear view mirrors, I could see more and more cars lined up behind us following us down the road. It was now very dark and about 9 o'clock at night. We thought at the pace the snow plow was running we would probably be into Circle at about eleven. Circle was now about 50 miles away.

All at once the turn signals from the snow plow were on, and he made a quick right turn off the road onto what appeared to be a county road. My first impulse was to follow him, but I realized that he was turning off the highway and perhaps going home for the night. I stopped the truck to think the situation over and I could see a string of cars that was unbelievably long. I got out of the truck and the people behind us were also pulling over and coming up to talk about what was going on. There were headlights of at least 20 cars. People were asking if I knew where the snow plow was going and of

(continued on page 6)

ADVERTISERS INDEX

B&D	21
Curlew Cattle Co.	6
DaKitch Farms	23
Engelhaupt Herefords	22
Ernst Herefords	25
Evenson	20
Frenzen Polled Herefords	13
Greater Omaha	17
Handel Marketing	18
Helbling - Leroy	20
Hereford America	30
Hoffman (SD)	18
Knoll Crest	2
I-29 Bull Run	9
Larsen Polled Herefords	6
Lazy JM Ranch	7
Krogstad Polled Herefords	6
Melcher Herefords	14
Midway Polled Herefords	8
Oleen Bros.	40
Perman, Casey	24
Rausch Herefords	3
Sandhill Farms	5
StarMak	15
Stuber Herefords	10
Thorstenson Herefords	12
Trickys Herefords	9
Wagner/Baxter	19
Ward, Ned and Jan	29
Wilson-Lees	27

Subscribe Now! DON'T MISS AN ISSUE!

Canadian & Foreign subscriptions — \$30 U.S. funds, one year
\$55 U.S. funds, two years

U.S. subscriptions —
\$20 - one year, third class \$35 - two years, third class
\$30 - one year, first class \$55 - two years 1st class
(Advertisers placing \$150 or more in advertising for the season will receive a free first class subscription.)

Please let us know if we need to correct your address or if your local post office has started using "911 Locator" addresses.

Note: When submitting an address we need to have 3 lines including a PO Box, Route or Street for the second line. Thanks!

Send new or corrected address to:

Hereford America
13823 Beaver Creek Place
Reva, SD 57651

Credit Card Payments
You may pay your subscription or advertising bill online by credit card through our website or by calling us with your credit card information.

Your subscription expiration date is printed above your name on the front page label area. If you wish to receive your paper in a more timely manner or live in a southern state please consider a first class

subscription for faster postal delivery.
For questions call Marc Hotchkiss at 605/866-4495.
If your address changes please be sure to notify us.

Name

Address

City

State Zip

Phone E-mail

Commercial Breeder Registered Hereford Breeder Polled
Registered Breeder, Other Breed Other Horned
Both

Signature Feb. 2018

(Required for Post Office Regulations)

The official Hereford publication for the states of
South Dakota, North Dakota, Wyoming & Minnesota.

HEREFORD AMERICA
605/866-4495
WWW.HEREFORDAMERICA.COM

Main Office:
13823 Beaver Creek Place
Reva, SD 57651

PUBLISHED 7 TIMES A YEAR:
SEPTEMBER-APRIL/MAY

(Nov/Dec is a combined issue)

by Hereford America, Inc., a family owned & operated business.
Jill and Marc Hotchkiss • Byron Bayers • Taylor Vroman

Jill Hotchkiss - jbh@herefordamerica.com • Cell: 605/490-1409

Marc Hotchkiss - marc@herefordamerica.com • Cell: 605/490-1513

Byron Bayers - bayers@3rivers.net

Byron's Phone: 406/684-5465 • Fax: 406/684-5499

Byron Bayers, PO Box 410, Twin Bridges, MT 59754

Editors: Jill Hotchkiss, Byron Bayers
Ad Design/ Production: Robin Engel, Jill Hotchkiss
Writers: Byron Bayers, Jill Hotchkiss, B. Lynn Gordon, Tom Granzow, Courtney Johnson
Editorial Assistant: Taylor Vroman
Proofreaders: June Hotchkiss, Taylor Vroman
Website Development: Robin Engel, Taylor Vroman, Jared Peterson
Coordinator: Jill Hotchkiss

Opinions expressed by our editors, columnists, letters to the editor or other writers or news sources are not necessarily those of the management. We welcome your comments, ideas, suggestions and letters to the editor. All correspondence (including e-mails) must be signed or must clearly identify the name of the author. Hereford America shall not be liable for slight changes or typographical errors that lessen the value of an advertisement. Hereford America's liability for errors or omissions in connection with an advertisement is strictly limited to publication of the advertisement in any subsequent issue or the refund of any monies paid for the advertisement. Advertising placed after deadline must be approved by the Editors. All materials for such advertising must be in by date specified by Editor. Late charges may apply. If an ad is placed and all materials are not received by date needed all attempts will be made to compile the ad from available materials. Any cancellations after deadline are subject to full charges for the ad. Hereford America reserves the right to refuse advertising to anyone. All contents Copyright 2016 by Hereford America, Inc., except Trademarks and Copyrights otherwise noted in which Hereford America, Inc. disclaims any proprietary interest.

BACK *to* BASICS

Bob Weaber, cow-calf extension specialist at K-State, reminds producers that the basic benefits of crossbreeding in a cow herd can equate to more than a \$198/calf advantage over straightbreds. At Sandhill Farms, we are creating genetics that compound this basic advantage by increasing your profits above \$198/calf because our cattle are bred for additional performance and carcass merit.

Sandhill Farms HEREFORD PRODUCTION SALE

NEW
SALE DATE

Saturday, March 24, 2018 • 1 PM
At the farm near Haviland, Kansas

Selling 125 Polled Hereford Bulls
25 Hereford Cows with Heifer Calves at Side
50 Open Commercial Hereford Heifers
15 Open Black Baldie Heifers

*Proven in the pasture by commercial
beef producers for five generations.*

A Note From Our Customer

"The calves out of the bull we bought from you are exactly as you represented him to me. They are small at birth, grow like crazy and have extra pigment. The main selling point on him was your saying that he will be an "udder fixer" and I do need that addressed. I really appreciate your approach/direction with the genetics in your cattle!"

Mike Corn
Corn Ranches
Roswell, New Mexico



For more information, visit www.SandhillFarms.com or call (620) 995-4072.

Kevin & Vera Schultz • Tyler & Hannah Schultz
2048 280th Avenue • Haviland, KS 67059 • Home (620) 995-4072
Kevin's Cell (620) 546-4570 • Tyler's Cell (620) 546-1574
Kevin@SandhillFarms.com • www.SandhillFarms.com
Ron & Arnita Schultz • (620) 348-4863

Free delivery on all registered cattle.

Like us
on Facebook



— SELLING —

**4 Two-Year-Old Bulls
2 Fall Yearlings
Thurs., April 12, 2018
Shamrock Livestock Market
O'Neill, NE**

For More Information Contact:

**Larry Larsen
Larsen's Polled Herefords
2252 CR 25 • Decatur, NE 68020
402-687-2532**



or
**Shamrock Livestock
402-336-1675**

Byron's Editorial...

(continued from page 4)

course I had no idea. A man from the car right behind me came up and asked me to come back to his car as his wife wanted to talk to me. I thought this was a little strange, but I went back to the car. As I approached the car she rolled the window down and said, "You've got to help me, I'm close to having a baby and please don't leave us out here on the prairie. Please keep going to Circle. You will help me, won't you?" I responded, "Lady, I will do all I can to get you to Circle."

All of us got back into our vehicles and with this long line of cars behind

me we fought our way down the road in the deep snow and blizzard conditions for about two hours and made it into Circle. I pulled over to the motel where we had made reservations and had planned to spend the night. About 10 of these car loads of people pulled into the same motel and of course all of them wanted a room.

The motel keeper said, "We have your room Mr. Bayers, but otherwise we are full." The expectant father was extremely dismayed at that news and said that they had to have a room. I told the innkeeper to give this man and his wife our room and we would get along.

I went to the phone and made a call to my friend and cattleman who was to receive the bulls, Earl Jensen. At that time he was one of the leading Hereford breeders in Montana. It was about midnight by now and the phone rang for quite a while before a very sleepy sounding Earl answered. Of course, the first questions to come were "Where are you?" and "How's the weather where you're at?" I told him we were in Circle and would sure appreciate a

bed at his place. Earl said, we will get the bulls off the truck and we will find you guys a bed.

After about a 20-hour day Remi and I were both getting very exhausted, but we headed out into the snow and headed east up the highway. We would be going up in elevation all the way to the Jensen ranch, so we knew that the weather would more demanding.

We slugged our way through the heavy snow for nearly an hour and finally turned into our destination. By this time, Earl and his brother, Barney, were up and helped us get into the loading chute and got the bulls off the truck. The Jensens found a bed for us to sleep in that night and the next morning after quickly looking over the cows and a nice breakfast with the Jensens, we were on our way back home.

By that time the storm had blown through and even though the highways were packed with snow. Traveling was much less of a problem with an empty truck. As we motored down the road the thoughts that went through my mind were of the lady we helped have her baby that night, and what stories that little baby may hear later in life about the night he or she was born and the terrible storm they went through to get to Circle. When the baby was old enough to understand, perhaps 6 or 7 years later, I would imagine the mother saying, "We just followed those guys in the cattle truck into Circle, MT the cold, snowy night you were born."

— BB

Top Quality Yearling Bulls for Sale

Shown are two of the distinctive sires used in our current yearling bull offering.

Length, thickness, muscling, pigment and docility are just a few of the favorable traits that have been passed on to their sons.



HH Advance 5017C #43581352



HH Advance 4251 #43470274

Our other Herd Sires not pictured are:

HH Advance 6215D #43688551

HH Advance 5295C #43579204

IF Advance 6006D #43682401



Curlew Cattle Company

Howard & Lynn Moss

895 Whitetail Road

Whitehall, MT 59759

Phone (406) 287-9947

E-mail: curlewcattle@gmail.com

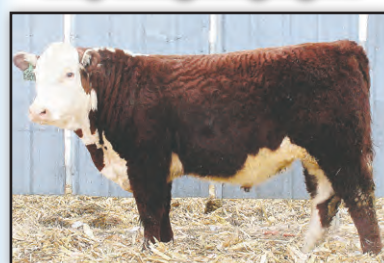


The old Ford F600 truck. It could tell a few stories of its own.

For Sale Private Treaty 20 Yearling Polled Hereford Bulls

Many calving ease prospects

**Avg. EPDs of sale bulls: CE 4.8 BW 2.6 WW 56
YW 90 M 27 SC 1.2 REA .44 IMF .11 CHB 31**



KPH 7Z VICTOR 1709

P43799721 - Homo Polled

7Z/Chosen One 83X - BW 73, Adj. WW 728
BW 2.3 WW 64 YW 106 Milk 26 M&G 58
REA .48 Marb .15 CHB \$35



KPH C90 WONDERBOY 1753

P43799530

C90/Courier - BW 97, Adj. WW 692
BW 5.1 WW 58 YW 89 Milk 23 M&G 52
REA .29 Marb .11 CHB \$28



KPH 755T VICTOR 1719

P43799663 - Homo Polled

755T/Head of the Class - BW 88, Adj. WW 746
BW 0.9 WW 55 YW 82 Milk 29 M&G 56
REA .26 Marb .17 CHB \$23



KPH 7Z VICTOR 1713 (twin)

P43799651 - Homo Polled by pedigree

7Z/Revolution - BW 70, Adj. WW 649
BW 2.0 WW 65 YW 102 Milk 29 M&G 61
REA .64 Marb .06 CHB \$35



Krogstad
Polled Herefords



Les Krogstad • kph@gvtel.com
(218) 945-6213 • (218) 289-5685 (cell)
3348 430th St., Fertile, MN 56540

**2018 MARKS 75 YEARS
RAISING POLLED HEREFORDS**
More information and pictures at
www.krogstadpolledherefords.com

Darin Krogstad
(651) 388-1013 • (651) 485-0159
16765 Welch Shortcut, Welch, MN 55089

→ → **McCLUN'S LAZY JM RANCH** M M Spring Sale **APRIL 12, 2018**

Torrington Livestock Market, Torrington, WY - 307-532-3333

**Selling: 18 Two-Year-Old Polled Hereford Bulls • 30 Yearling Polled Hereford Bulls • 30 Yearling Angus Bulls
• 5 Two-Year-Old Polled Hereford Cows with calves • 5 Two-Year-Old Angus Cows with calves**

Herd Bull



RF Logical Choice 55W

Logic x Feltons 517
4/9/09 - 9 yr. old still working

Herd Bull



KJ BJ 58Z Cat-Man-Du 288C ET

CRR 719 Catapult 109 x full sister to Revolution 4R
2/12/15 - High-seller 2016 Jensen Bros. Sale



42E Cat-Man-Du x Durango Grandson

2/21/17 - BW 3.7 WW 65 YW 101 M 22



34E Cat-Man-Du x Progress

2/19/17 - BW 1.7 WW 61 YW 91 M 24



65E Cat-Man-Du x SHF Red Man R72

2/24/17 - BW 1.7 WW 51 YW 80 M 17



113E Cat-Man-Du x SHF Red Man R72

3/3/17 - BW 1.2 WW 51 YW 82 M 20



E5 SHF Access x Prospector

2/16/17 - BW 1.4 WW 21 YW 88 M 20



12E Logical Choice 55W x SHF Wonder granddaughter

2/13/17 - BW 0.7 WW 45 YW 70 M 21



154E Logical Choice 55W x Durango granddaughter

3/13/17 - BW 1.7 WW 54 YW 84 M 29



132E SHF Wonder grandson x Victor 719T

3/7/17 - BW 3.2 WW 57 YW 92 M 24



118D Logical Choice 55W x SHF Red Man R72

3/11/16 - BW 1.0 WW 48 YW 72 M 18



94D World Wide x SHF Red Man R72

3/8/16 - BW 0.6 WW 45 YW 67 M 23

Jim, Jeri & Jean

1929 Road 60

Veteran, WY 82243

307-837-2524 • 307-534-5141

Jeff & Kari

1930 Road 60, Veteran, WY 82243

307-837-2554 • 307-575-2113

jkmccclun@wyomail.com

Kody, Tyler, Mason & Kanin

5849 Hwy 154, Veteran, WY 82243

307-575-3519

dakota.mccclun@hotmail.com

FOR SALE BY PRIVATE TREATY

**Selling: 30 Two-Year-Old Bulls
plus Registered Hereford Yearling Heifers
Also 20 BWF and Black Yearling Heifers**

Call for a catalog or view online at www.HerefordAmerica.com

10D

BW 3.9
WW 60
YW 98
M 22
REA .44
CHB\$ 29

A real muscle powerhouse bull. Goggle-eyed and red all over.

Generations of heavy milking, great-uddered cows behind this bull. A real top prospect. Sire: NJW 10Y Whit 129A by LJR 023R Whitmore 10W.



63D

BW 4.0
WW 64
YW 103
M 26
REA .50
CHB\$ 31

One of my favorite bulls. Huge bodied, full of muscle. Solid marked

with great pigment. Super tame with great EPDs. Sire: NJW 10Y Whit 129A by LJR 023R Whitmore 10W.



70D

BW 4.1
WW 59
YW 96
M 31
REA .37
CHB\$ 29

A very maternal bull that has great depth, thick top and a big

butt. Full pigment, dark colored, high growth, and very high milk. Super dam and grandam with great udders. Female maker. Sire: CKP Pelton 4044 by CRR Helton 980.



**TOP QUALITY WORKING CATTLE BRED AND FED
WITH THE COMMERCIAL CATTLEMAN IN MIND.**

For more information contact:

MIDWAY POLLED HEREFORDS

7480 26th St., Sheyenne, ND 58374 • midwayph@gondtc.com
(2.5 miles south and 5.5 miles east of Sheyenne)

Bill and Karen Smith: (701) 996-3300 cell: (701) 302-0254

Jake and Whitney Burkhardtsmeier: cell: (701) 650-8906

home: (701) 996-3600

Doug and Ann Smith: (701) 996-3111

Since 1953



Visitors always welcome.

Empire Ranch

(continued from page 1)

Bridger, WY, The Berrys at Cheyenne, WY and Carmichael Herefords, Meadow, SD. The Longhorn bulls are purchased from The Wyoming Longhorn Ranch at Cowley.

"Because our entire ranch is contiguous land that we own as private property plus a small BLM allotment we own, we have it easy moving cattle from pasture to pasture," McCullough says. "We will put about 250 pairs from the calving pasture into the first pasture."

"Once they are in there, we move into the next pasture where they get branded. The late ones are calved and put them with the two-year-old heifer pairs and brand those with the late ones," she comments. "We hold them in the first pasture and move one herd ahead of the other. This way, the young cows don't have to compete for the grass with the older cows."

Love for cattle and ag issues

The hard-working widow says she really enjoys being with her cattle.

She reminisces, "We've come through bad fires, bad droughts and some terrible winters. I remember one winter was so bad, I called Skip and said, 'Someone like me shouldn't own cows in a winter like this,' to which he responded, 'Nobody should own cows in a winter like this.'"

After Curt died, McCullough became increasingly involved in property rights issues.

"In 2007, a state legislator who is my neighbor told me the Wyoming Legislature's ag committee was going around the state having meetings to see if they could improve the rights of property owners with the eminent domain laws," she says. "I was a member of R-CALF USA and decided we needed a Wyoming organization. Charlie Stevenson, Vanna Waters and I held a meeting in Casper to establish the Independent Cattlemen of Wyoming."

She continues, "We decided to only focus on a few critical issues as not to get overwhelmed. We focus on property rights and ranching issues. Because of my involvement with the R-CALF animal identification committee, I've gone to Washington, D.C. to testify for R-CALF, representing our cow/calf producers."

McCullough admits she's done a lot to speak up on western issues.

"As one rancher said about getting involved, 'I'd rather stay home and fence, but what good is a fence if I don't have my land?'" McCullough emphasizes.

"We can't complain if we don't try to make a change. I'm very concerned about packer concentration and about the Global Roundtable for Sustainable Beef (GRSB)," she says, noting that R-CALF's annual meeting addresses

such issues to educate their members. "We've got to get everyone educated about what's coming down the pike."

This article was originally printed in the Wyoming Livestock Roundup's Fall Cattlemen's Edition on Sept. 30, 2017. It was written by Rebecca Colnar, a correspondent for the Wyoming Livestock Roundup.

Reprinted with permission.



Justin Gerstner, Judy's son-in-law and business partner at a recent Hereford bull sale.

Rich History

Judy McCullough had a great reason for keeping the place in the family. It was the headquarters for the Empire Sheep Company, established in 1898 by S.A. Guthrie. He went to Crook County in the fall of 1889.

Guthrie started out on the 101 Ranch and then bought the Plowman's place, which is where the McCullough ranch is today.

His livestock business led him to be one of the principal owners of the Empire Sheep Company, which ran in North Dakota, South Dakota and Wyoming. Back then, they had 100 sheep wagons and herders to go with each wagon.

"Two of the original barns are gone, but the one that remains was constructed by a ship builder who used pegs instead of nails," McCullough explains.

There is an original bunkhouse the McCulloughs now use as a shop and the old commissary building still stands.

She says, "All that was here for a long time was the Empire Sheep Company and the 101 Ranch down river."

The Guthries were good friends with McCullough's grandfather.

"William Hahn homesteaded in the Flag Butte area because Guthrie recommended it," she explains. "They were good friends. In fact, my aunt's middle name, Isabel, was Guthrie's wife's name."

McCullough married her late husband Curt in 1976 and moved onto the ranch. Leonard and Margaret McCullough had bought the ranch from Isabel Guthrie. The sheep were gone by that time.

TRICKY'S HEREFORDS ANNUAL BULL SALE

SATURDAY, MARCH 10, 2018 • 12 NOON (CT)
MADISON LIVESTOCK AUCTION • MADISON, SD

SELLING 40 BULLS

*We have 25 Bulls in the
 Top 15% for YW • Top 5%
 for REA • Top 1% for CHB*

Sale Broadcast Live On:

Livestock
 Link

View Sale and Bid Online
 if unable to attend in person.

www.TheLivestockLink.com

SELLING SONS OF *REVOLUTION, TRUST* AND *SHEYENNE*. WILL HAVE GE-EPDs AND HOMO POLLED DESIGNATIONS.



Lot 1

TRICKYS X51-B19 E55
 3/22/17 • P43852663
 SIRE: KCF BENNETT REVOLUTION X51
 BW 91 • 205 DAY WT 887
 205 RATIO 124

CED -0.4; BW 5.2; WW 79;
 YW 126; M 24; MG 63; REA 1.17;
 MRB .29; CHB\$ 42

Top 10% WW, YW, REA, BMI, CHB. Top 5% Cow Fertility, Udder, Teat, Marb.



Lot 20

TRICKYS TRUST A46-100W E36
 3/19/17 • P43852650
 SIRE: NJW 735 M326 TRUST 100W ET
 BW 95 • 205 DAY WT 745
 205 RATIO 104

CED -1.8; BW 3.9; WW 59;
 YW 100; M 28; MG 57; REA .63;
 MRB .04; CHB\$ 39

Top 5 REA. Top 1 CHB. Top 10 Milk, BMI.



Lot 2

TRICKYS BOY X51-A22 E71
 3/24/17 • P43852674
 SIRE: KCF BENNETT REVOLUTION X51
 BW 90 • 205 DAY WT 817
 205 RATIO 114

CED 0.1; BW 4.8; WW 74;
 YW 117; M 21; MG 58; REA 1.10;
 MRB .26; CHB\$ 42

Top 1% for WW, YW, REA, BMI and CHB. Top 5% for Cow Fertility, Teat & Udder.



Lot 19

TRICKYS TRUST A03-100W E82
 3/31/17 • P43874812
 SIRE: NJW 735 M326 TRUST 100W ET
 BW 90 • 205 DAY WT 848
 205 RATIO 115

CED -0.3; BW 3.2; WW 59;
 YW 101; M 29; MG 59; REA .68;
 MRB .08; CHB\$ 38

Top 1% for CHB. Top 5% for YW, REA, BMI. Red eyed, red necked.



Lot 3

TRICKYS TRUST Z28-100W E25
 3/18/17 • P43852645
 SIRE: NJW 735 M326 TRUST 100W ET
 BW 90 • 205 DAY WT 740
 205 RATIO 104

CED -3.6; BW 4.2; WW 68;
 YW 113; M 27; MG 62; REA .75;
 MRB .16; CHB\$ 38

Top 1 % for WW, YW, REA, BMI & CHB. Top 5 for Growth, Fertility. Top 25, Teat, Udder.



Lot 26

TRICKYS REV 3949-4R E18
 3/15/17 • P43827660
 SIRE: MSU TCF REVOLUTION 4R
 BW 96 • 205 DAY WT 644
 205 RATIO 90

CED -3.8; BW 4.9; WW 57;
 YW 94; M 17; MG 46; REA .58;
 MRB .10; CHB\$ 33

Top 15% YW, Cow Fertility, Teat, Udder, REA. Top 3 BMI, CHB.



Lot 14

TRICKYS RED C66-B13
 TATTOO: E28 • 3/18/17 • P43827668
 SIRE: TRICKY'S RED BULL Z04-200Z B13
 BW 90 • 205 DAY WT 880
 205 RATIO 123

CED 2.0; BW 4.0; WW 64;
 YW 103; M 34; MG 66; REA .67;
 MRB .12; CHB\$ 38

Top 1% REA, CHB. Top 5% WW, YW, BMI, Udder.



Lot 31

TRICKYS REV 1523-4R E19
 3/15/17 • P43827661
 SIRE: MSU TCF REVOLUTION 4R
 BW 90 • 205 DAY WT 644
 205 RATIO 90

CED 2.3; BW 2.2; WW 55;
 YW 89; M 19; MG 47; REA .29;
 MRB .22; CHB\$ 27

Top 1/3 Growth, High Maternal, Cow Fertility, BMI.

For more information or a catalog contact:



Tricky's Herefords

44132 234th St.
 Winfred, SD 57076

Dick & Betty Wettlaufer
 rwettlaufer@triotel.net

(605) 485-2648
 C: (605) 270-3465

www.TrickysHerefords.com



EPDs: 2/9/18

STUBER RANCH

Founded in 1909 — 109 years ago.

First commercial Herefords in 1918 — 100 years ago.

First registered Herefords in 1931 — 87 years ago.

Herd evaluation and performance program for 65 years.

First production sale in 1969 — 50 years ago.

50TH ANNUAL SALE SAT., APRIL 21, 2018

At the ranch 1 p.m.

Selling 100 Yearling Bulls (top-end sell) • 9 Fall Bulls

60 Registered Heifers (Replacement kind)

100 Commercial Heifers (Hereford and BWF, home raised)

Sale live on DVAuction - video available.

FEATURING OFFSPRING FROM

From our calving ease specialist



CHURCHILL SENSATION 028X

BW -2.7 WW 49 YW 67
M 50 REA .52 MRB .37 CHBS 31

Calving ease proven in every way.

Look at his best production ever



CL 1 DOMINO 0130X

BW 1.0 WW 61 YW 100
M 35 REA .73 MRB .11 CHBS 33

Does so many things right.

Watch for his consistent, thick look



C STOCKMAN 2059

BW 4.7 WW 47 YW 74
M 37 REA .57 MRB .21 CHBS 33

Long, muscle and agile.

Gives you the productive look



UU TURNING POINT

BW 4.4 WW 76 YW 130
M 34 REA .77 MRB .04 CHBS 34

Hip, back, growth and long

OTHER PRODUCTIVE SIRES

BCC BILLY THE KID 330A
BW 5.2 WW 64 YW 104 M 35
REA .85 MRB .07 CHBS 40

SR BAKKEN 62Z
BW 4.1 WW 67 YW 114 M 41
REA .62 MRB .20 CHBS 33

UPS NAVARRO
BW 4.1 WW 47 YW 91 M 32
REA .49 MRB .28 CHBS 33

SR RIGHT ON 2203 Z ET
BW 1.2 WW 59 YW 93 M 37
REA .66 MRB .27 CHBS 36

SR INDIGO 1181Y
BW 6.0 WW 67 YW 122 M 20
REA .85 MRB .04 CHBS 33

SR DIABLO 613A
BW 5.0 WW 81 YW 126 M 23
REA 1.17 MRB .09 CHBS 38

MHPH 521X ACTION 106A
BW 4.1 WW 69 YW 105 M 24
REA .71 MRB .15 CHBS 31

NJW 73S W18 HOMETOWN 10Y ET
BW 2.2 WW 59 YW 101 M 37
REA .52 MRB .48 CHBS 33

NJW 79Z 22Z WOW 57C ET
BW 2.5 WW 64 YW 91 M 29
REA .79 MRB .07 CHBS 34

SNS 40W WESTERN LAD 8A
BW 6.4 WW 60 YW 101 M 21
REA .43 MRB .14 CHBS 32

BRC FACTOR Y19
BW 5.2 WW 61 YW 99 M 27
REA .30 MRB .06 CHBS 25

SR NAVARRO 450X
BW 5.3 WW 50 YW 92 M 29
REA .23 MRB .19 CHBS 27

Visitors welcome
anytime.

STUBER RANCH

7606 149th AVE SW BOX 56 BOWMAN, ND 58623

ROGER 701-523-5371 DUANE 701-523-3496 LAUREEN 701-523-5297

Contact us at ddstuber@ndsupernet.com.

Visit us at stuberranch.com for pictures and pedigrees.

10 miles north of Bowman or 16 miles south of Amidon on Hwy 85,
then 5 miles west, 1/2 mile south.

EPDs 2/6/18



Let us put you on
our mailing list.



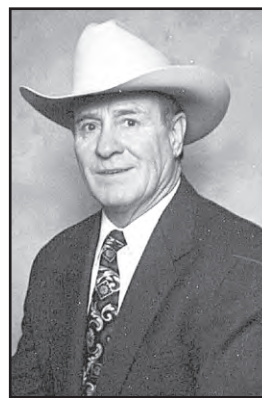
Final Farewell...

Don Rehm

Don Rehm, Columbus, Montana, passed away unexpectedly in the early morning hours of Jan. 21, 2018, at the Stillwater Billings Clinic in Columbus, MT.

Don and his twin sister, Donalda, were born July 19, 1937, in Hebron, ND, to Alvin and Gertrude Hauser Rehm.

Don was raised in Hebron, ND, where he excelled in 4-H, basketball, football and rodeo. He represented North Dakota at the National High School Rodeo in Harrison, NE, in 1955 after his graduation. He proudly brought home the National Steer Wrestling Championship to North Dakota. After returning from his two-year stint in the U.S. Army, he worked for several registered Hereford breeders. While working for Kyd Cattle Company in Three Forks, MT, he met his wife Betty Polston. They married in 1964 and to this union one daughter, Donna, and one son, Shane, were



Don Rehm

born.

After leaving Three Forks, he moved the family to Farley Hereford Ranch and then on to the Banana Bank Ranch in Belize, Central America. Upon their return in 1975, he spent the next 30 years working as a fieldman for The Record Stockman in Denver, CO. In 2000 he was awarded the Marketeer of the Year award in Denver. He retired in 2007.

Throughout his life he enjoyed many rodeo events and excelled at team roping. In his later years he loved to golf and fish.

He was preceded in death by his parents, three brothers, three sisters and a grandson. He is survived by his wife of 53 years, Betty; his daughter Donna (Todd) Rustad and his son Shane (Sara) Rehm; grandchildren Tim Rustad, Kate Rehm, Kelly Rehm, and Cole Rehm; Sisters Lenore Cornelius and Donalda (AI) Tucker and sister-in-law Beverly Rehm, sister-in-law Boni (Skip) Stout and brother-in-law Bill (Juanita) Polston. He also leaves numerous nieces, nephews and cousins.

Memorials may be made to the Custer County 4-H program in Miles City, MT, for scholarships and special project awards in honor of his grandchildren or to the charity of your choice.

David Allen Nelson

David Allen Nelson, 74, died at the Aneta Parkview Health Center, Aneta, ND, on January 22, 2018. Dave was born on November 1, 1943, in Valley City, ND, to Lloyd W. and Elizabeth A. (Anderson) Nelson. He grew up in Marsh Township and attended King School, rural Valley City, and then transferred to Valley City High School and graduated in 1961. He attended Valley City State College and participated on the wrestling team. In 1964, he joined the North Dakota National Guard and served 6 years.

On June 25, 1966, he married Vivian Berntson in Valley City. Dave started selling real estate at Lawn Realty, Inc., in 1968. He purchased the firm from his dad in 1970. He continued in the business until retiring in 2014.

He was an avid bowler in his younger years and he bowled two 300 games. At the time he bowled his first perfect game, local businesses offered a \$2,000 prize for such a feat. He used this prize money to buy his first 5 cows and get started in the cattle business, which was a lifelong passion for him. He raised registered Polled Herefords and showed cattle at various local, state, and national competitions. He was a member of the American Hereford Association and leader of the Marsh 4-H club for several years.

He enjoyed hunting both locally and in far flung places such as the Yukon Territory, Alaska and South Africa.

Dave is survived by his wife Vivian; son Brett, Palmer, AK; son and daughter-in-law, Brian and Jessica, Valley City, ND and their children Bryce, Corey and Jada; son and daughter-in-law, Bruce and Brooke, Valley City, ND and their daughter Harper; siblings, Cheryl (Myron) Senechal, Bismarck, ND; Gary, Valley City, ND; sisters-in-law, Ellrene (Duane) Sortland, Eileen Berntson, Lois (Bud) Badger, Anita (Tom) Erickson, Barbara (Raymond) Mewes, Olive (Howard) Rasmusson, and Gail Christl; brothers-in-law, Douglas (Ruth) Berntson, Delbert (Joan) Berntson, Durwin (Mary) Berntson, Dallas Berntson, and Darryl (Jeanne) Berntson; and numerous nieces, nephews, great nieces and great nephews.

He was preceded in death by his parents; brother-in-law and sister-in-law Denton and Paulette Berntson; brothers-in-law Elmer Christl and David Berntson and nephew, Tod Erickson.

(continued on page 12)

EGGERS
Southview Farms

Tim & Philip Eggers
Sioux Falls, SD

SECTION 16
CATTLE CO.

Erik Scott & Family
Canton, SD

S Sleepy Hollow Farm

Mark & Jeanne Johnson
Centerville, SD

SPRINGWATER
SPH
Polled Herefords

Troy or Chad Williamson
Garretson, SD

TSR
cattle co.

Troy & Shannon Rasmussen
Elkton, SD

Saturday, March 10, 2018

6:00 p.m. at the Expo Building
W.H. Lyon Fairgrounds,
Sioux Falls, SD



Bull Run

An elite offering of
Hereford & Angus Bulls, plus
select females & embryo packages.

watch and bid live at:
The Livestock Link



Sired by NJW 735 W18 Homegrown 8Y ET
From Eggers Southview Farms



Sired by JDH 13Y 33Z Champ 45B ET
From Springwater Polled Herefords



Sired by ECR R0 Rushmore 418 ET
From TSR Cattle Co.



Sired by ILR Hometown 332A ET
From Section 16 Cattle Co.



Sired by R Leader 6964
From Sleepy Hollow Farm



Sired by SAC Conversation
From Sleepy Hollow Farm

To find more information, request a catalog and see
photos and videos of our entire offering, please visit:

www.i29bullrun.com

f facebook.com/i29bullrun

For details, please contact:

Phil Eggers, Eggers Southview Farms.....605.351.5438
Mark Johnson, Sleepy Hollow Farm.....605.212.2387
Troy Rasmussen, TSR Cattle Co.....605.690.0100
Erik Scott, Section 16 Cattle Co.....605.214.1332
Troy Williamson, Springwater Polled Herefords.....605.254.7875

Final Farewell...

(continued from page 10)

Willy Tenold

Willie "Willy" John Tenold was born April 3, 1938, to Peder and Astrid "Esther" (Rasmussen) Tenold in Buffalo, SD. He was the 9th of 10 children and grew up on the family ranch 3 miles east of Reva, SD. After Willie's father died, he and his brother, Bob, purchased the family ranch where Willie lived until his death. They raised commercial Herefords. Willie and his siblings attended Jefferson and Reva country schools. In 1956, he graduated from Hetttinger High School.

Willie married Venoy Idella Smith February 6, 1971. They raised 4 children on the family ranch where 2 children, Pete and Laura, continue the family operation to this day. In 1960, Willie was named "Outstanding Young Rancher." He was always active in the community including, serving on the Slim Buttes Lutheran Church Council, HC Weed and Pest Board, and measuring fields and grain bins for the FSA, to name a few. Willie was always busy. When he had everything in order at home, he and Bob did custom farming, haying, and corn chopping for the neighbors. Willie enjoyed local history and was excited to help with the Harding County history books, taking a special interest in the churches and cemeteries.

Willie's favorite pastime was working on the ranch and he especially looked forward to farming in the spring. In 1990, Willy was paralyzed in a tractor accident as he was getting ready for spring planting. Special modifications allowed Willie to use the telephone and computer unassisted. In 2001, Willie started working in Buffalo for his daughter, Angela, answering phones and keeping everyone on task. Sonny Nation, Karen Brown, and Marilyn Parfrey became good friends in the years he spent at the Tatanka Plaza, sharing stories and when needed, encouragement.

Willie always loved a good story and a hearty laugh. After he retired from his town job, Willie commenced his true life's passion – the phone tree! Every day he called his people to visit, share a laugh, and lend encouragement. "I'm in pretty good shape for the shape I'm in!" was his favorite line, and a good reminder to keep life's troubles into perspective. In 1977, Willie recommitted his life to his Lord and Savior, Jesus Christ. His relationship with Jesus has sustained him through many trials and tribulations over the years.

Some people may assume that Willie's life ended 28 years ago from his accident, they would be mistaken. This last chapter was a new beginning, and some of the best years of his life. He watched his children grow to adulthood and enjoyed every minute spent with his grandkids and great-grandkid,

Isabella Rose. You may have seen him out in the field in his wheelchair directing Pete on a tractor repair, traipsing around the countryside with youthful chauffeurs, Laura and Julianna, sorting bolts at the kitchen table with Dalton and Jesse, supervising Alexis' egg collection duties, or anywhere in the whole country with his lifelong traveling partner, wife, and caregiver, Venoy. We joked that Dad's accident was God's version of "forced retirement," but the fact of the matter is, these were

the years Willie got to enjoy his greatest treasure on earth, his family.

Willy Tenold, 79, Reva, SD, died Saturday, February 3, 2018 at home in Reva.

Willie is survived by his wife, Venoy; children, Angela & Dalyn McCann, Peder, Julianna, and Laura; grandchildren, Dalton & Ashley, Jesse Bill, and Alexis; great grand-daughter, Isabella Rose McCann; sisters, Mildred Peterson, Agnes Steinbach, Bertha Nelson, and Delores Coffield; brother, Robert and Norma Tenold; brother-in-law, Phil Hulse; Venoy's brothers and sisters; and nieces and nephews too numerous

to mention in this small space.

Willie was preceded in death by his parents, Peder and Esther; sisters, Alpha Hulse, Luella and Richard Steinbach, and Florence and Jerrold Peterson; brother, Orvin and Eileen Tenold; brothers-in-law, James Peterson, Raymond Nelson, and John Steinbach; parents-in-law, J. Richard Smith, Ivan and Martha Smith Sabo; sister-in-law, Marie Smith; brothers-in-law, George Smith, Gene Ladson, and Keith Hanson; nephews, Ricky and Todd Tenold and Roger Coffield; and great-nephew, Tyrel Brengle; and cousin, Tommy Rasmussen.

Thorstenson HEREFORD RANCH

**Production Sale
SATURDAY,
APRIL 14, 2018**

**1:00 (CDT) • At the Ranch
Selby, South Dakota**

DVAuction
Broadcasting Real-Time Auctions
www.DVAuction.com

**Selling
70 Bulls
43 Hereford & 27 Angus
Plus**

**15 Registered
Hereford Heifers
15 Angus Heifers**

Other Herd Sires:
NJW 47X 8Y Homegrown 51A
NJW 37U 100W Trust 113Z
Bar JZ Audacious 294A
JA L1 Domino 500R

**Bill: 605-845-6108
Darin: 605-321-6416**

**wpthorstenson@venturecomm.net
www.thorstensonherefordranch.com**



PYRAMID 3027 DOMINO 1109 reg# 43185506
BW -1.6; WW 54; YW 90; SC 1.2; M 41; MG 68; REA .55; MRB .34
Low birth weight herd sire by 3027 with tremendous numbers
and his dam is one of the premier cows in the breed



THR THOR 4269B reg# P43503524
BW 4.0; WW 56; YW 90; SC 0.7; M 20; MG 48; REA .52; MRB .26
Big ribbed, structurally balanced, good doin' beef bull!



PYRAMID HOMEGROWN 4151 reg# P43494432
BW 0.6; WW 51; YW 93; SC 1.6; M 37; MG 63; REA .43; MRB .14
Homozygous Polled and tremendous sire with great numbers!

75 Angus Bulls | 40 Polled Hereford Bulls | 90 Open & Bred Heifers

Galen Frenzen Family ANNUAL BULL SALE

Tuesday | March 27, 2018 | 1:00 PM | Fullerton, Nebraska

Frenzen Sale Facility | 4.5 miles N of Fullerton on HWY 14



Frenzen Eclipse E82 ET (Full brother to Bruiser)
Churchill Red Bull 200Z X Bar JZ Devo 311K
CED+4.1 BW+2 WW+55 YW+87 M+26 \$CHB+31.0



Frenzen Emblem E34 (Out of a full sister to Bruiser)
R Leader 6964 X Churchill Red Bull 200Z
CED+5.8 BW+3.3 WW+67 YW+108 M+28 \$CHB+33.0



Frenzen Escalade E21 ET (Full brother to Bruiser)
Churchill Red Bull 200Z X Bar JZ Devo 311K
CED+4.1 BW+2 WW+55 YW+87 M+26 \$CHB+31.0



Frenzen Eyewear E92
Frenzen Bar JZ Bruiser B30 X Frenzen Upsurge U12
CED+7 BW+0.9 WW+58 YW+85 M+24 \$CHB+31.0



Complete Performance Data Available
Several Bulls Are Suitable For Heifers
Many Bulls Tested Homozygous Polled

PERFORMANCE BRED IN, NOT FED IN

All cattle raised without creep and developed on a high roughage ration

Featured Sires

KJ 968R Polled Solution 668ZET	Mohican Bar Star Revved Up 78A	Frenzen Braveheart B21
Churchill Red Bull 200Z	KJ C&L J119 Logic 023R ET	Frenzen Brilliance B20
Churchill Kickstart 501C ET	C&L CT Federal 485T 6Y	Frenzen Crown Royal C25
Churchill Stud 3134A	Frenzen Bar JZ Bruiser B30	Bar JZ Fahrenheit 603Y

FRENZEN ANGUS & POLLED HEREFORDS

50802 N Edgewood Road | Fullerton, NE 68638
Galen 308-550-0237 Eric 308-550-0238
ggfrenzen@gmail.com | www.frenzencattle.com



Sale ROUNDUP

Delaney Herefords and Atkins Herefords
January 22, 2018
Lake Benton, MN

Auctioneer: Jim Birdwell

34 Yearling Bulls — \$6,006
17 Bred Heifers — \$3,094
8 Cows — \$2,813
2 Commercial Hereford Bred Heifers — \$1,900
20 Commercial Black Bred Heifers — \$2,000

Top Bulls:

Lot 2, AH JDH 34X Victor 33Z 7E ET, 1/9/17 by JDH Victor 719T 33Z ET to K&B Herefords, Onida, SD, \$28,000.
 Lot 1, AH JDH 34X Victor 33Z 2E ET, 1/7/17 by JDH Victor 719T 33Z ET to Rausch Herefords, Hoven, SD, \$17,000.
 Lot 43, JDH 11B Stud 3134 63E, 2/7/17, Churchill Stud 3134A to Hansmeier & Son, Bristol, SD, \$16,000.
 Lot 5, JDH 21Z Victor 33Z 40E ET, 1/30/17, JDH Victor 719T 33Z ET to Snowshoe Cattle Co., Pompeys Pillar, MT, \$14,000.
 Lot 4, JDH 21Z Victor 33Z 15E ET, 1/25/17, JDH Victor 719T 33Z ET to

Peckenpauherefords, Carthage, SD, \$10,000.

Top Bred Heifer:

Lot 60, JDH MS 2035 DiMaggio 2094 78D, 2/6/16, H DiMaggio 2094 ET, bred to /S Revolution 661128, sold to Keith Eichler, Aberdeen, SD, \$6,000.

Top Cow:

Lot 72, JDH MCD MS 20R Betty 117B ET, 3/30/14, AH JDH Cracker Jack 26U ET to Parker Bros., Bradyville, TN, \$4,500.

Churchill Cattle Company
World Class Bull Sale
Jan. 23, 2018

Auctioneer: Joe Goggins

99 Bulls — \$5,230
2 Donor Cows — \$5,250
20 Fall Yearling Heifers — \$3,763

Top Bulls:

Lot 5, Churchill Mark Dom 7256E, 3/4/17 by LJS Mark Domino 1321 to Gemstone Cattle Company, Gem, AB, Canada & ST Genetics, Navasota, TX, \$56,000
 Lot 1, Churchill Trident 742E by



It was a bright, sunny day for the Churchill Cattle Co. Bull Sale at Manhattan, MT.

Churchill Trident 742E, 1/8/17 by Churchill Gallatin 5211C to Erickson Diamond T Ranch, Minot, ND, \$24,000.

Lot 8, Churchill Torque 765E, 1/13/17 by Churchill Kickstart to Sommers Herefords, Pinedale, WY \$15,000.

Lot 6, Churchill Big Horn 7172E, 2/2/17 by HH Advance 5044C to Cornerstone Ranch, Fort Sumner, NM \$12,500.

Lot 2, Churchill Hyalite 789E, 1/16/17 by Churchill Stud to Tyler Rankin, Murdo, SD \$11,500.

Top Female:

Lot 125, Churchill Lady 092X, 1/24/2010 by Golden Oak Outcross to Dana Livestock, Tunkhannock, PA \$5,250.

Carswell-Nichols Herefords
Fifth Annual Production Sale
January 27, 2018
Alton, KS

Auctioneer: Justin B. Stout

21 Yearling Bulls — \$3,045
8 Fall Yearling Bulls — \$3,125
22 2-Year Old Bulls — \$3,150
51 Total Bulls — \$3,108

10 Spring Yearling Open Heifers — \$3,290

9 Spring Calving Females — \$2,767

19 Registered Females — \$3,042

112 Commercial Spring Bred Heifers — \$1,569

116 Commercial Spring Yearling Open Heifers — \$1,165

Top Bulls:

Lot 56, Nichols Spear 6165 to JLB Herefords, Junction City, KS, \$8,500.
 Lot 46, Nichols 0945 Domino 660 ET to Mark Studley, Speed, KS, \$8,000.
 Lot 1, Nichols Slingshot 74 to Travis Brummer, Tipton, KS, \$7,500.
 Lot 3, Nichols Slingshot 718 to Mike Anderson, Gothenburg, NE, \$6,000.

(continued on page 16)

Celebrating 70 years raising registered Herefords

HORNED AND POLLED HEREFORD FALL BULLS FOR SALE



Excellent Quality and Disposition.

Sires represented include:
 CL 1 Domino 4163B,
 CL 1 Domino 789T,
 KCF Bennett Revolution X51,
 AH JDH Cracker Jack 26U.

30 YOUNG REGISTERED HEREFORD FALL CALVING COWS; BOTH HORNED AND POLLED FOR SALE



2, 3 and 4-year-olds from the heart of our herd. Bred for September or October calves.

Horned cows are bred to CL 1 Domino 4163B or JA L1 Domino 5610.
 Polled cows are bred to R 4Ever 7485 or other leading Polled Hereford sires.

Cows will be ultrasound preg checked and ready to go April 1st.

MELCHER

HEREFORDS, INC.

Don and Jean • Matthew & Kristen • Kevin & Sherry • 86287 Voyager Rd., Page, NE
 Home: 402-626-7994 • Don: 402-336-7194 • Kevin: 402-340-6189 • Matt: 402-336-8182



Nerve center at the Delaney-Atkins sale. Pictured in their office are ringman Bill Schermer, Laura Atkins and Shelly Delaney.



Delaney-Atkins sale crowd on a very wintery day. Pictured at left are SDHA co-manager Mark Johnson with Pete Atkins.



Starmak Cattle Co.

ANNUAL PRODUCTION SALE

with consignments from Walsh Farms

March 16, 2018 @ 10 am

**NEW TIME

SIOUX FALLS REGIONAL LIVESTOCK

This sale will be broadcast live on the internet:
DVAuction
Broadcasting Real-Time Auctions

Worthing, South Dakota



sire: WALSH SMAK MR WYARNO IC



sire: BLACKTOP LAMBEAU 459 ET



sire: TSR THROTTLED UP C124ET

Selling:
40 HEREFORD & ANGUS BULLS
+ 20 OPEN HEREFORD HEIFERS



WWW.STARMAKCATTLE.COM

Starmak Cattle Co.

MATT & ERIN KNOCK
46548 271ST ST.
TEA, SD 57064

For more information --

MATT KNOCK - 605.360.5456
TOM WALSH - 320.760.2607
JACKSON WALSH - 320.368.0225
ALEX COSGRAY - 765.490.6286

Sale ROUNDUP

(continued from page 14)

Top Females:

Lot 69, Nichols Lady 745 ET to Justin Beckstrand, Devils Lake, ND, \$8,000.
Lot 72, Nichols Lady 725 to Harrison Cattle Company, Arapaho, OK, \$5,000.

Sioux Empire Farm Show Hereford Show and Sale January 25, 2018 Sioux Falls, SD

Auctioneer: Chisum Peterson

14 Bulls — \$2,939
4 Females — \$2,325

Brady Jensen, Brookings, SD, judged the Sioux Empire Farm Show Hereford Show Jan. 25 in Sioux Falls, SD. Jensen chose Lot 21, SIP LLS 20Y Maximus 20E, a consignment from Sip Stock Farm, Morgan Sip, Ada, MN, as Grand Champion Bull. He was sired by TH 400U 32X Trump 206Z. He sold for \$3,000 to Clarence Caraway, Lake Benton, MN. Reserve Champion Bull went to Lot 18X, Dakitch 108A Trump 57E, a consignment from Dakitch Hereford Farms, Ada. He sold to Francis Kane, Montrose, SD, for \$2,750.

The highest selling bull was Lot 33, a consignment from Circle S Ranch, Stewartville, MN. He sold to Dan Hrgreaves, Stickney, SD, for \$5,750. The second highest selling bull was Lot 11, a consignment from Huwaldts Herefords, Randolph, NE. He sold to Doug Noedhues, McLean, NE, for \$4,000. Lot 5, AH R117 MS Skeye K4 ET, a consignment from Huwaldts Herefords, was Grand Champion Female. She was sired by SHF Rib Eye M326 R117. She was the highest selling female and sold to Brad Huwaldt, Osmond, NE, for \$2,500. Lot 3X, SQCF MS Stryker 711, was Reserve Champion Female.

She was consigned by Stenberg Herefords, Colman, SD and was the second highest selling female and sold to Cody Williams, Colman, for \$2,500.

Black Hills Stock Show Hereford Sale January 31, 2018 Rapid City, SD

Auctioneer: Lynn Weishaar

31 Bulls — \$4,612
6 Heifers — \$4,833

Top Bulls:

Lot 44, K Caliber 602, 3/4/16 by CRR About Time 743 consigned by Sage Krebs sold to Wilkinson Farms, Neligh, NE, \$16,000.

Lot 23, ECR CHEZ L18 Sensation 7051 ET, 2/20/17 by GO Excel L18 consigned by Fawcett's Elm Creek Ranch, sold to Jim Schuette, Highmore, SD, \$14,000.

Lot 34, CHEZ ECR TR Candyman 7305E, 1/16/17 by H/TSR/CHEZ Full Throttle, consigned by Chesney Effling and Fawcett's Elm Creek Ranch sold to Brad and Meg Frecking, Alpha, MN, \$10,500.

Lot 35, KE 209 Pioneer 703 KE, 1/14/17 by TH 403A 475Z Pioneer 358C ET consigned by Eichler Livestock and Cane Creek Cattle Co., sold for \$10,000.

Top Heifers:

Lot 3, MC Missy 1021ET, 4/7/17 by UPS TCC Nitro 1ET from Muller Cattle to Sage Krebs, Gordon, NE, \$6,750.
Lot 5, K Roxy 704, 3/18/17 by NJW 79Z 22Z Mighty 49C ET to Mark Rodriguez, Raymondville, TX, \$6,500.
Lot 4, CCCC Maggie 1754, 4/1/17 by GR on Target 2625 to Mark Rodriguez, Raymondville, TX, \$6,250.

(continued on page 18)



Grand Champion Bull at the 2018 Black Hills Stock Show in Rapid City, SD was CHEZ ECR TR Candyman 7305E, 1/16/17 by H/TSR/CHEZ Full Throttle, consigned by Chesney Effling and Fawcett's Elm Creek Ranch, Ree Heights, SD.



Reserve Champion Bull at the 2018 Black Hills Stock Show in Rapid City, SD was K Caliber 602, 3/4/16 by CRR About Time 743 consigned by Sage Krebs, Gordon, NE.



Supreme Champion Bull at Sioux Empire Farm Show was SIP LLS 20Y Maximus 20E from Sip Stock Farm, Morgan Sip, Ada, MN. He was sired by TH 400U 32X Trump 206Z.



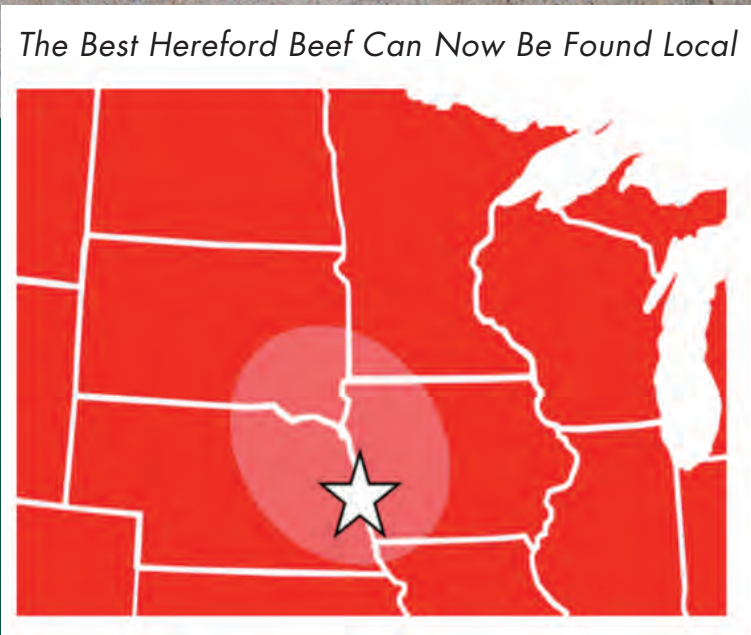
During the Black Hills Stock Show the Reinhold family presents a Bob York painting to a family who enjoys the tradition of the Black Hills Stock Show & Rodeo, particularly Hereford Day. The Reinhold family does this in honor of the late Tige Reinhold. This year the Woods family of Hillview Ranch north of Rapid City were the recipients.



Reserve Champion Bull at Sioux Empire Farm Show was Dakitch 108A Trump 57E, a consignment from Dakitch Hereford Farms, Ada, MN.



- Proud Packer of Certified Hereford Beef® for 18 Years
- Ten consecutive growth years in pounds sold and carcasses certified
- More pounds per capita of Hereford Beef is sold in this region (retail and restaurants) than anywhere else in the US. Go local.



Each week, we buy corn fed finished cattle primarily in this region. However, we reach beyond the strike zone to find the best Herefords wherever they might be fed in the Midwest. Even after we’ve concluded our normal weekly trade, we are never too full for Herefords and Baldies. We are always in the market to buy finished Herefords and we offer a \$25 premium per head for Hereford program qualifiers. If you’d like your finished calves in our Hereford program, we can introduce you to partner feed yards who custom feed or who buy Hereford and Baldie calves. Whether you want to market your feeder calves or retain ownership, let us help you direct your load lot Hereford influenced feeder cattle into our primary trade area.

Please Contact:
Brad Ellefson (Hereford Feeder Cattle Coordinator).....**(605) 216-6010**

For All Other Inquiries Contact:

Head Finished Cattle Buyer Chris Peterson (402) 380-9616	Cattle Buyer David Grant (507) 220-0192	Cattle Buyer Matt Bode (402) 580-4605
---	--	--

Sale ROUNDUP

(continued from page 16)

Ridder Hereford Ranch Annual Bull & Heifer Sale Callaway, NE Feb. 1, 2018

Auctioneer: Jim Birdwell

14 yearling Bulls — \$7,054
56 two-year-old Bulls — \$4,487
26 yearling Heifers — \$1,700

Top Yearling Bulls:

R 4105 North Star 3E, selling for \$10,000 to Wemhoff & Son, Belgrade, NE.

R 4105 North Star 17E sold for \$8,500 to Ted Johnson, Raymond, NE.

R 4105 North Star 11E sold for \$8,000 to Knippling & Sons, Gann Valley, SD.

R 4105 North Star J 34E sold for \$8,000 to Don & Kevin Klein, Roseland, ND.

Top Two-Year-Old Bulls:

R 3203 North Star ER 69D, selling for \$8,000 to Knippling & Sons.

R 4105 North Star T 26D & R 330A North Star 36D each sold for \$7,000 to Arrow C Ranch, Ravenna, NE.

R 4067 North Star 55D sold for \$7,000 to Randy & Clint Bentley, Miller, NE.

Top Heifers:

R Starlette 713 for \$2,900, selling to Aaron Bock, Beatrice, NE.

R Starlette 703 sold for \$2,800 to L-W, Absarokee, MT.

Stroh Hereford Ranch 28th Annual Production Sale Feb 1, 2018 Killdeer, North Dakota

Auctioneer: Scott Weishaar

38 Two-Year-Old Bulls — \$3,871
9 Bred Registered Heifers — \$1,995
5 Commercial Bred Heifers — \$1,950

Top Bulls:

Lot 626, SHR L1 Domino A 626 by CL 1 Domino 3146A to Bromley Ranch, LLC of Drake, ND, \$8,500.

Lot 688, SHR Desert Xpert 688 by TP Desert Xpert 327 to Joe Woroniecki of Hebron, ND, \$6,500.

Lot 655, SHR L1 Domino A 655 by

CL 1 Domino 3146A to Springhill Ranch of Wibaux, MT, \$5,250.

Lot 6202, SHR Sensation 6202 by UU Sensation 2053 to Cody Armbrust of Belfield, ND, \$5,250.

Lot 622, SHR Sensation 622 by UU Sensation 2053 to Teddy Woods, Wibaux, MT, \$5,000.

Top Heifer:

Lot 652, MS Captain

652 by Churchill Captain 2182Z to Tessier Herefords of Belfield, ND, \$2,200.

Lot 6192, Queen Thor 6192 by THR Thor 3213A to Flath Herefords, Cole-harbor, ND, \$2,150.

Dvorak Herefords Pickstown, SD Feb. 2, 2018

Auctioneer: Will Epperly

34 Coming Two Year Old Bulls — \$4,675
48 Spring Born Yearling Heifers — \$1,390

Top Selling Bulls:

Lot 27, DVOR 028X 4145 Dunn 624D to Summerville Farm, Platte, SD for \$6,750.

Lot 39, DVOR 3222 R410 Dobias 619D to Doug King, Las Animas, CO for \$6,250.

Lot 4, DVOR 502 049 Dodge 6161D to Duane Lunne, Dallas, SD for \$6,000.

Lot 7, DVOR 502 3111 Duran 6132D to Mark Williams, Bonesteel, SD for \$6,000.

Lot 24, DVOR 665 410 Daredevil 612D to Mark Zimmerman, Yankton, SD for \$6,000.

Top Selling Heifers:

Lot 43, ROUDY 468Z R412 Coon Eyes 705E to Emily Young, Danbury, NC for \$3,200.

Lot 44, DVOR 502 B256 Lady Taurus 7113 to Cane Creek Cattle Co., Glenham, SD for \$2,750.

Elkington Polled Hereford & South Devon Sale February 2, 2018 Idaho Falls, ID

Auctioneer: C.D Butch Booker

53 Polled Hereford Bulls — \$3,300
15 South Devon Bulls — \$2,847
15 Hereford Bred Females — \$2,547
5 South Devon Bred Females — \$2,140

Top Hereford Bulls:

EPHR Elker Blaszer 206D, 3/16 by EPHR Trail Blazer 724A to Jensen Bros. Herefords, Courtland, KS, \$10,000 (1/2 Interest).

EPHR Elker Blazer 323D, 3/16 by EPHR Trail Blazer 724A to Seven High Ranch, Melba, ID, \$4,900.

EPHR Elker Kirk 346D, 3/16 by EPHR Elker 2017 820B to Somsen Ranch, Raft River, ID, \$4,750.

EPHR Elker Magnum 412D, 4/16 by EPHR Magnum 221Y, to KEG Herefords, Valentine, NE, \$4,750.



Baumgarten sale bulls.

**600 OPEN HEREFORD
HEIFERS REPLACEMENT
QUALITY**

**NEW LISTINGS HAPPEN
FREQUENTLY!**

**CONTACT ME WITH
YOUR WANTS OR NEEDS**

**HANDEL MARKETING, LLC.
ART HANDEL • 605 391 8233
HANDELHEREFORD@AOL.COM**

Offering Yearling & Two-Year-Old Polled & Horned Hereford & Commercial
Black Angus Bulls **PRIVATE TREATY SALES**

Hoffman
HEREFORDS.COM
Leola, South Dakota

*We've been in the
Hereford business
for 90 years!*

Colin & Mary Beth Hoffman • 11341 357th Ave. • Leola, SD 57456 • (605) 439-3623 • (605) 216-7506
www.hoffmanherefords.com



Sale day at Ridders.

(continued on page 20)

BACK TO BASICS SALE

Your F1 Source

Monday, March 19, 2018 at Rockham, S.D.

Sale in conjunction with Baxter Angus Farm

SELLING:

- 20 2-year-old Hereford bulls • 25 yearling Hereford bulls
- 4 Registered Hereford Females (Bred to 5009)
- 50 Bred Baldie Females (AI'd to Special Focus)
- 50 Yearling Angus Bulls • 10 Black Hereford Bulls • 40 Angus Open Heifers

AI Sires include:
Sandhills
Access,
Red Bull and
Flow Sensation



Lot 3 - WH BAR JOHN 07E
 43855190 - 2/10/17
 CED -4.5 BW 3.7 WW 65 YW 100 MILK 22
 M&G 55 CHB 31



Lot 9 - WH 159P BOND 54E
 43842400 - 3/14/17
 CED 0.9 BW 2.7 WW 54 YW 83 MILK 21
 M&G 49 CHB 28



Lot 21 - WH ACCESS Y90 09E
 43848661 - 2/13/17
 CED 3.1 BW 3.4 WW 57 YW 88 MILK 26
 M&G 55 CHB 24



Lot 40 - WH MR VICTOR 189D
 43738887 - 4/24/16
 CED 5.0 BW 2.3 WW 49 YW 77 MILK 22
 M&G 47 CHB 28



Lot 103 - BA Upward 7929
 BW 4.6 WW 68 YW 114 MILK 20



Lot 119 - BA Block Party 7271
 BW .4 WW 52 YW 91 MILK 20



Lot 149 - BAX Balder 9630 7038
 BW 2.3 WW 42 YW 74 MILK 23

Watch and bid at: www.TheLivestockLink.com

The Livestock Link

Request a catalog at www.wagnerherefords.com

Wagner
 HEREFORDS

Wagner Herefords
Reese and Elly Jo Wagner
 39365 182nd St., Redfield, SD 57469
605-596-4370
 Reese 605-450-1085 • Elly Jo 605-450-9790
info@wagnerherefords.com

BAXTER

ANGUS FARM

Mark Baxter
 605-472-3253 • 605-450-0206
 16984 368th Ave., Rockham, SD
baxterangus@nrctv.com

(continued from page 18)

Top South Devon Bull:

EBS Elker 1121 338D, 3/16 by DLC Legacy 1121, \$4,000.

Top Hereford Female:

EPHR Miss Elker Standout 351D, 3/16 by EPHR Stand Out 626A, to Robert Hawkes, Montpelier, ID, \$2,900.



Jake Baumgarten

Lot 7114, BCC Domino 7114E, 3/4/17 by CL 1 Domino 5110C to Larry Stangle, Marsland, NE, \$9,500.

Lot 702, BCC L1 Domino 702E, 1/17/17 by CL 1 Domino 412B to James Woodbury, Shields, ND, \$7,500. Lot 789, BCC L1 Domino 789E ET, 2/20/17 by CL 1 Domino 5110C to Chris Mickelson, Wellsville, KS, \$7,500.

Top Two-Year-Old Herefords:

Lot 6139, BCC L1 Domino 6139D ET, 3/3/16 by CL 1 Domino 105Y to James Woodbury, \$5,000.

Lot 665, BCC L1 Domino 665D ET, 2/14/16 by CL 1 Domino 215Z to Kevin Fugere, Belfield, ND, \$5,000.

Top Angus:

Lot 6110, Nords Introduction 6110,

9/8/16 by PVF Insight 0129 to Duckwitz Angus Ranch, Belfield, ND, \$7,250.

**Upstream Ranch
Annual Production Sale
February 3, 2018****Auctioneers: Lynn Weishaar and
Seth Weishaar****175 Coming Two-Year-Olds —
\$4,280****153 Fall Yearling Bulls — \$4,165
328 Hereford Bulls — \$4,226****Top Selling Two-Year-Old Bulls:**

Lot 59, UPS Easy Money 6051, 3/20/16 by Perks 0003 Easy Money 4003 to Cane Creek Cattle Co., Glenham, SD, \$30,000.

Lot 7, UPS 9525 Domino 617, 3/18/16, by UPS Domino 9525 to Bauman Herefords, Falls City, NE, \$11,500.

Lot 1, UPS Undisputed 601, 3/15/16, by UPS Undisputed ET to Monahan Cattle Co., Hyannis, NE, \$9,000.

Lot 32, UPS Easy Money 679, 3/24/16, by Perks 0003 Easy Money 4093 to JLB Ranch, Douglass, KS, \$8,000.

Top Selling Fall Yearling Bulls:

Lot 288, UPS Easy Money 6952 ET, 10/12/2016, by Perks 0003 Easy Money 4003 to Dan Carstens, Ericson, NE, \$10,000.

Lot 179, UPS Hometown 6519, 8/12/16, by NJW 73S Hometown 10Y ET to DNP Farms, Inc., La Mars, IA, \$9,500.

Lot 296, UPS Easy Money 6961 ET, 10/12/16, by Perks 0003 Easy Money 4003 to Circle A Ranch, Burwell, NE, \$9,000.

Lot 306, UPS 3310 Spartan 6981, 10/15/16, by UPS Spartan 3310 to Double E Land & Cattle, Belvidere, NE, \$8,000.

**Cattlemen's Choice Sale
Pelton Polled Herefords****February 5, 2018****Halliday, ND****Auctioneer: Tony Heins****41 Hereford Bulls — \$3,491****1 SimAngus — \$3,250****10 Angus Bulls — \$3,485****57 Black Baldy Heifers — \$1,225****Top Selling Bulls:**

Lot 9, CKP Turbo 7047, 3/4/17, by H Redline 513 ET to Midway Polled Herefords, Sheyenne, ND, \$6,500.

Lot 22, CKP Chosen One 7054 ET, 3/5/17, by ECR RO Chosen One 424 ET to Bang Ranch, Killdeer, ND, \$6,500.

Lot 44, CKP Homegrown S133, 3/3/17, by NJW 73S W18 Homegrown 8Y ET to Topp Herefords, Grace City, ND, \$6,000.

Lot 48, CKP Beefmaker 7153, 3/24/17, by Whitehawk Beefmaker 734B to Mike Sonsalla, Marmath, ND, \$5,200.

Lot 34, CKP Stockman 7127 ET, 3/20/17, by TH 89T 755T Stockman 475Z to Knife River Ranch, Golden River, ND, \$5,000.

**Watertown Winter Farm Show
Hereford Sale****Tuesday, Feb. 6, 2018****Watertown, SD****19 bulls — \$3,136****2 heifers — \$4,300****Top Bulls:**

Lot 23, consigned by Fawcett's Elm Creek Ranch, Ree Heights, SD and Ryan Ollerich, Clear Lake, SD, purchased by Klages Herefords, Ortonville, SD, \$7,500.

Lot 11, consigned by Hanson's Polled Herefords, Conde, SD, purchased by Bottum Brothers for \$4,000.

Top Female:

Lot 3, Consigned by Begalka Herefords, Castlewood, SD and purchased by Christopher Ver Hoeck for \$5,300.

(continued on page 22)

**Ad deadline is
March 5th.****FOR SALE****40 Commercial Hereford Heifers**

Will weigh 850 lbs.+

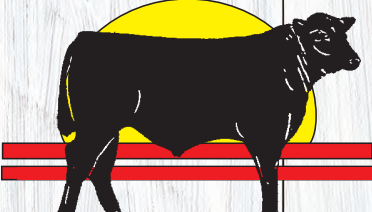
Bangs vaccinated and ready for breeding

— Closed cow herd for 104 years —**LeRoy Helbling 701-663-0200**

(after dark)

701-595-4246

(cell phone)



**38th Annual Production Sale
Thursday
MARCH 15, 2018**

**Lemmon Livestock Auction
Lemmon, SD**

Free Lunch • Sale at 1:00 (MST)
Be there or bid online at www.cattleusa.com

— SELLING 110 BULLS —
60 YEARLING ANGUS BULLS & 40 FALL BULLS
plus **15 REG. SPRING OPEN ANGUS HEIFERS,**
15 REG BRED FALL HEIFERS
& 70 COMMERCIAL ANGUS HEIFERS

AVERAGE SALE BULL WEIGHTS
Yearling Bulls Average WW - 794 lbs.
Fall Bulls Average WW - 647 lbs.

- Ultrasound & all other performance data available on sale day
- Volume Discount on Bulls • Free Delivery on bulls - up to 250 miles
- \$75 discount per bull if you haul your own

SIRES

Jindra Acclaim 134: 11 Yearling sons sell - 3 Fall sons sell
Evenson Stetson 100X: 12 Yearling sons sell - 5 Fall sons
Connealy Black Granite: 7 Yearling sons sell - 13 Fall sons
KG High Regard 2073: 7 Yearling sons sell
Evenson Freedom 412: 6 Yearling sons sell
Connealy Guinness: 2 Yearling sons sell - 5 Fall sons sell
Jindra Kinetic 794: Yearlings 8 sons sell - Falls 7 sons sell
Jindra Medallion 475: 2 Yearling sons sell
SSAF Tiger 305: 1 Yearling son sells - 6 Fall sons sell
Rally New Frontier 5233: 1 Yearling son - 1 Fall son sells
Freys Appearance: 1 Yearling son sells
TW Image Maker 406X: 2 Yearling sons sell
Bruns Top Cut 373: 8 Fall sons sell
Evenson Answer 222: 2 Fall sons sell

For more information or sale catalog contact:

Evenson Angus

Box 1089 • Hettinger, ND 58639
Bill 701-567-2861 • Rod 701-567-3358
View catalog online at: www.evensonangus.com

The Season Opener

32nd Annual Production Sale

March 19, 2018, 1 p.m. at the ranch.

Selling

9 2-year-old Herefords • 30 18-month-old Herefords
10 2-year-old Angus • 22 18-month-old Angus
25 Yearling Angus • 42 BWF first calf pairs
12 Commercial Angus first calf pairs



CL 1 DOMINO 215Z



S A V TEN SPEED 3022

DVAuction
 Broadcasting Real-Time Auctions

1350 N.E. 100 Ave.
 Claflin, KS 67525
 620-786-9703

beranbrothers@hbcomm.net
 www.bdherefords.com

B&D
Herefords

Beran
Brothers
Angus HW

WATERTOWN CHAMPS



Grand Champion Bull — Lot 23, Fawcett's Elm Creek Ranch, Ree Heights, SD and Ryan Ollerich, Clear Lake, SD, purchased by Klages Herefords, Ortonville, SD, \$7,500.



Grand Champion Heifer — Lot 1X, consigned by Weeping Fox Ranch, Hartley, IA sold to Jon Albrecht, \$3,000.



Reserve Champion Bull — Lot 11, consigned by Hanson's Polled Herefords, Conde, SD, purchased by Bottum Brothers for \$4,000.



Reserve Champion and Top Selling Heifer — Lot 3, Consigned by Begalka Herefords, Castlewood, SD and purchased by Christopher Ver Hoeck for \$5,300.

ENGELHAUPT HEREFORDS & TKR HEREFORDS (BRUCE TUCKER)

Bull Sale

TUESDAY, MARCH 20, 2018

Atkinson Livestock Market // Atkinson, Nebraska
Also broadcast on www.cattleusa.com

SELLING: 20 BULLS // 10 YEARLING HEIFERS

Principle Sire: Navarro



For more information contact:

Jack Engelhaupt // 402-775-2588 // engherefords@nntc.net

Sale ROUNDUP

(continued from page 20)

Topp Herefords
Volume XVIII Production Sale
February 9, 2018
Grace City, ND

Auctioneer: Roger Jacobs

143 Yearling Bulls — \$8,615
9 Registered Yearling Heifers — \$7,611

Top Bulls:

Lot 3, TH 312A 358C Pioneer 174E,
1/30/17 by TH 403A 475Z Pioneer

358C to Hoffman Ranch, Thedford, NE & Genex, Shawano, WI, \$110,000.

Lot 9, TH 13Y 358C Pioneer 206E,
2/1/17 by TH 403A 475Z Pioneer
358C to Wooden Shoe Farms, Blackfoot, ID, \$45,000.

Lot 113, TH 71S 310 American Made
322E, 2/22/17 by CRR 109 American
Made 310 to Huso & Sons, Aneta, ND, \$27,000.

Lot 18, TH 188A 358C Pioneer 63E,
1/7/17 by TH 403A 475Z Pioneer
358C to A.A. Williams, Rushford, MN, \$22,500

Lot 10, TH 506B 358C Pioneer 531E,



Lot 3 topped the Topp sale at \$110,000. TH 312A 358C Pioneer 174E sold to Hoffman Ranch, Thedford, NE and Genex, Shawano, WI.

1/25/17 by TH 403A 475Z Pioneer 358C to A.A. Williams, Rushford, MN, \$21,000.
Lot 15, TH 228A 358C Pioneer 83E; 1/11/17, by TH 403A 475Z Pioneer 358C to Riverbank Ranch & Pelton Polled Herefords, \$21,000.

Top Heifers:

Lot 147, TH A208 102A Kyra 181E, 1/30/17 by TH 143X 17Y Lambeau 102A to Rangeline Cattle, Thief Falls, MN, \$10,000.
Lot 148, TH 89T 755T Gemini 513E, 1/2/17 by TH 223 711 Victor 755T to Ashwood Cattle Company, Haskell, OK, \$10,000.

**Amdahl Herefords and Angus
and Jim Baker Herefords
Production Sale
February 10, 2018
Rapid City, SD**

Auctioneer: Doug Dietterle

**31 Yearling Hereford Bulls —
\$5,685**

6 Fall Hereford Bulls — \$5,875
56 Yearling Angus Bulls — \$4,281
10 Fall Angus Bulls — \$4,000
20 Open Angus Heifers — \$1,407
4 Bred Angus Females — \$1,925

Top Hereford Bulls:

Lot 1, KB L1 DOMINO 660D, 9/1/16,

by CL 1 Domino 269Z 1ET to Behm Hereford Ranch, Burlington, ND, \$12,000.

Lot 38, KB L1 Domino 762E ET, 2/19/17, by HH Advance 3006A to John Molstad, Luverne, ND, \$11,000.
Lot 22, KB L1 Domino 731E ET 01/31/17 by CL 1 Domino 269Z 1ET to Hermann Ranch, Lemmon, SD, \$10,000.

Lot 28, KB L1 Domino 740E 02/08/17 by HH Advance 4344B to Diamond K Ranch, Lusk, WY, \$10,000.

Lot 30, KB L1 Domino 744E ET, 2/10/17, by CL 1 Domino 5110R to Behm Hereford Ranch, Burlington, ND, \$9,500.

Lot 21, TA L1 Domino 726E 01/27/17, by HH Advance 5039C ET to Mollman Ranch, Morristown, SD, \$9,000.

Lot 39, TA L1 Domino 764, 2/20/17, by CL 1 Domino 269Z 1ET to Geronimo Garza, Mexico, \$8,500.

Lot 3, TA L1 Domino 745E, 2/11/17 by CL 1 Domino 269Z 1ET to Gre-enough Ranch, Oelrichs, SD, \$8,000.

Top Angus Bulls:

Lot 59, Amdahl's Aviation 724, 1/14/17 by Musgrave Aviator to Bailey Patterson, Spearman, TX, \$11,000.

Lot 70, Amdahl Landmark 712, 1/11/17 by Amdahls Block Party 557 to Millar Angus & Kelly Kinsley Stur-gis, SD, \$9,500.



Tim Amdahl (left), auctioneer Doug Dietterle, Marcia Amdahl and Jim Baker on the block welcoming the sale attendees.

Top Females:

Lot 138, Open Angus Female, Amdahl Blackbird ET 148, 1/18/17, by Mus-grave Big Sky to Green Mountain An-

gus Ranch, Ryegate, MT, \$2,750.

Lot 166, Bred Angus Female, Amdahl Miss Pride 5043-5159, 5/5/15, by Bushs Contagious 669 to Baker, Jeff & Kevin Piedmont, SD \$2,800.



J.D. Amdahl

**Hula Herefords
February 10, 2018
Creston, NE**

Two Year Olds — \$3,865
Falls — \$6,250
Yearlings — \$4,843
Total Bulls — \$4,735
Commercial Heifers — \$1,410

(continued on page 24)

DAKITCH ANGUS & HEREFORD FARMS

"Our Brand is Your Success" Bull Sale

SATURDAY, MARCH 31, 2018

at Dakitch Bull Development Farm - 1:00 p.m. - Lunch will be served
9 miles East of Ada, MN on Hwy 200 right along Hwy on South side. From Hwy 32 coming East on Hwy 200 3 miles.

Selling: 40 Angus Yearlings • 20 Polled Hereford Yearlings

Videos and sale live at:

DVAuction

Auctioneer:

Cody Crum 217-248-7282



Dakitch 57C Catapult322 27E
Catapult 322 x Trump 206Z
BW 3.6 WW 68 YW 109 M 30



Dakitch MDK93C Catapult322 43E
Catapult 322 x Trump 206Z
BW 3.8 WW 70 YW 109 M 31



Dakitch MDK 95S Simba 61E ET
Catapult 109 X Tank Master
BW 3.8 WW 61 YW 92 M 28



Dakitch MDK 95S Rafiki 40E ET
Catapult 109 X Tank Master
BW 3.5 WW 58 YW 87 M 28

EPDs 2/12

DAKITCH ANGUS & HEREFORD FARMS

Matthew, Darci & Dawson Kitchell • David & Lorie, Michael & Mason Kitchell

1997 355th St., Ada, MN 56510 • 218-584-8283 Home

701-799-7690 Matthew • 701-256-4094 Darci

matthewdkitchell@gmail.com

Call or email for a catalog

Find us on Facebook



Find us online at www.dakitchfarms.com

Sale ROUNDUP

(continued from page 23)

CK & Wager Cattle
Inaugural Production Sale
February 10, 2018
Highmore, SD

Auctioneer: Seth Weishaar

51 Bulls — \$5,107
16 Reg. Bred Heifers — \$3,284
7 Commercial Angus Heifers — \$2,785

Top Selling Bulls:

Lot 1, Chez Mr. Profit 7707E ET by Profit, to Todd Klockgether, Charter Oak, Iowa, \$15,000. (3/4 Simmental, 1/4 Angus)

Lot 41X, to Mike Moser, Lamoure, ND, \$10,500.

Lot 47, Chez Leader 7640E ET by Leader 6964 to Joseph Skavdahl, Marsland, NE, \$9,000.

Top Selling Bred Heifers:

Lot 106, WAGR Miss Profit 6234D by Profit to Trey Hardesty, Valparaiso, IN, (Simmental), \$9,750.

Lot 100: WAGR Miss Vision 6057D by Mr CCF Vision to Shipwreck Cattle, Grandview, TX, (Simmental) \$5,500.

Mrnak Herefords
Bowman, ND
February 11, 2018

Auctioneers: Seth Weishaar and Scott Weishaar

97 Bulls — \$5,227
287 Commercial Baldy Heifer Calves — \$1,252
5 Ranch Horses — \$5,400

Top Bulls:

Lot 47, MH Frontier 6147, 4/11/16 by MH 9067 Domino 2249 to Lance Leachman, Maidstone, SK, \$12,000.

Lot 42, MH 4303 Advance 6138, 4/10/16 by MH 2239 Advance 4303 to Larry & Richard Tinjum, Powers Lake, ND, \$12,000.

Lot 34, MH 4119 Advance 6100, 4/4/16 by MH 2239 Advance 4119 to Merle Wyatt, Arrowwood, AB, \$11,000.

Lot 7, MH Wachter 622 1ET, 3/21/16 by BCD 345S Wachter 998W to Dallas



These big two-year-olds at Mrnak's sale were in high demand on sale day.

Farms, Bowden, AB and Conway Herefords, Foremost, AB, \$10,000.

Lot 9, MH Great Divide 624 1ET, 3/22/16 by WCC/CC 1009 Great Divide 102 to Marc Feller, Redfield, IA, \$10,000,

BB Cattle Co
February 12, 2018
Connell, WA

Auctioneer: Rick Machado

95 Hereford Bulls — \$4,907
41 Angus Bulls — \$3,681

Top Bulls:

Lot 12, BB Top Shelf 7013, a 1/17 son of BB Top Shelf 2003 to Case Ranch, Mertzon, TX, \$15,000.

Lot 5, BB Top Shelf 6218, an 11/16 son of BB Top Shelf 2003, to Larry Maxwell, Lakeview, OR, \$9,000.

Lot 4, BB Top Shelf 6185, a 10/16

son of BB Top Shelf 2003, to Trinagle Ranch, Heppner, OR, \$8,500.

Lot 6, BB Top Shelf 6197, a 10/16 son of BB Top Shelf 2003, to Larry Maxwell, Lakeview, OR, \$8,000.

Lot 7, BB Top Shelf 6183, a 10/16 son of BB Top Shelf 2003, to Triangle Ranch, Heppner, OR, \$8,000.

Top Angus Bulls:

Lot 137, OCR Unanimous 610, an 8/16 son of Vision Unanimous to Steve Coleman, Mollala, OR, \$7,000.

Lot 139, OCR Top Ten 623, a 9/16 son of OCR Top Ten 310, to Robinson Ranch, Whitebird, ID, \$6,000.

Logterman Family
Angus & Hereford Sale
February 12, 2018
Valentine, NE

Auctioneer: Matt Lowery

80 Two-year old Hereford Bulls — \$3,504

61 Two-year old Angus Bulls — \$4,445

28 Yearling Angus Bulls — \$4,257

Top Hereford Bulls:

Lot 6194, L 10Y Hometown 6194,

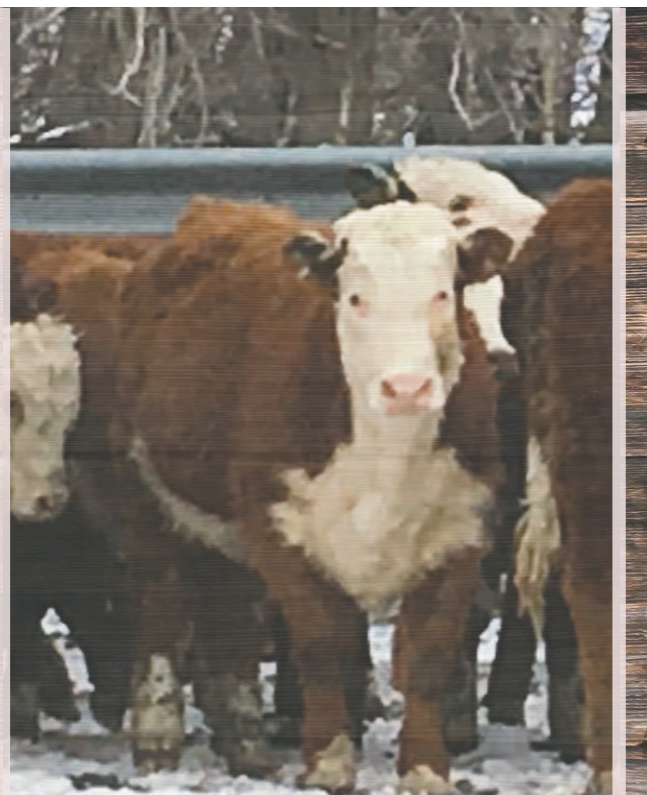


Commercial females are always a popular item at the Mrnak sale, Bowman, ND.

100 Head of Hereford Heifers to Sell
THURS., MAR. 29, 2018

at Mobridge Livestock Market
Mobridge, SD

Call Casey Perman for more information
605/848-3338



Keith Carmichael, Meadow, SD
 at the Logterman sale.

4/16, by NJW Hometown 735 W18 Hometown 10Y to Gary Hoffman, Lehr, ND, \$7,500.
 Lot 6166, L 10Y Hometown 6166, 4/16, by NJW Hometown 735 W18 Hometown 10Y to Rod Frickle, Atkinson, NE, \$7,000.
 Lot 6102, L 383 Ribeye 6102, 4/16, by K 88X Ribeye 383 to Phipps Land and Livestock, Whitman, NE, \$6,750.
 Lot 6115, L Freckles 6115, 4/16, by KC Mr. Ribstone 10071 to Phipps Land and Livestock, \$6,250.

Top Angus Bull:

Lot 6271, DL 208 Really Windy 6271, 4/16, by LLL Really Windy 208 to LB Haase & Sons, Valentine, NE, \$10,000.
 Lot 6341, DL 3146 Master Line 6341, 5/16, by Master Hi Line 3146 to Dale Stoner, Kilgore, NE, \$9,750.
 Lot 6071, DL 1068 Mr Aberdeen 6071, 3/16, by TR Mr Aberdeen 1068Y to Triple L Ranch, Burwell, NE, \$9,000.

**Fawcett's Elm Creek Ranch
 Production Sale
 February 12, 2018
 Ree Heights, SD**

Auctioneer: Lynn Weishaar

54 Hereford Yearling Bulls — \$4,727
36 Hereford Two-Yr. old Bulls — \$4,847
3 Angus Yearling Bulls — \$3,417
3 Angus Two-Yr-Old Angus Bulls — \$4,417
78 Commercial Baldy Replacement Heifers — \$1,300

Top Yearling Hereford Bulls:

Lot 1, ECR CHEZ L18 Sensation 7076 ET, 2/26/17 by GO Excel L18 to Landon Laible and ROE Livestock, Howard, SD, \$18,000.
 Lot 38 ECR 3116 Aventus 7571 ET, 4/2/17 by BR Nitro Aventus 3116 ET to Brad Freking, Alpha, MN, \$9,000.
 Lot 2, ECR 3304 Undisputed 7150, 2/23/17 by UPS Undisputed ET to Wagner Herefords, Redfield, SD, \$8,500.
 Lot 5, ECR 2029 Advance 7075, 2/21/17 by HH Advance 2029Z ET to Daren & Mark, Schmidt, Marietta, MN, \$8,500.



Dwight Logterman welcomed the crowd to the Logterman Family Angus and Hereford sale held at Valentine Livestock Auction, Valentine, NE.

Top Two-Year-Old Hereford Bulls:

Lot 64, ECR 2109 Domino 6180, 3/1/16 by CL 1 Domino 2109Z to Empire Ranch, Moorcroft, WY, \$10,500.
 Lot 69, ECR 2109 Domino 6394, 3/21/16 by CL 1 Domino 2109Z to Engelhaupt Herefords, Butte, NE, \$9,500.

**Thorson Herefords
 Annual Production Sale
 Feb. 13, 2018
 Philip, SD**

Auctioneer: Lynn Weishaar

34 Two-Year-Old Hereford bulls — \$3,904
41 Commercial Hereford Heifer Calves — \$1,200

Top Selling Bulls:

Lot 30, TH L1 Domino 6041, 3/21/16 by JA L1 Domino 0214 x JBN L1 Domino 725 to Roseth Brothers, Midland, SD, \$8,000.
 Lot 4, TH L1 Domino 6129, 4/15/16 by BT L1 Domino 3305 to Mark and Mick Trask, Elm Springs, SD, \$6,500.
 Lot 35, TH L1 Domino 6840, 4/22/16 by JA L1 Domino 0214 to Bernard Herber, Kadoka, SD, \$6,000.
 Lot 3, TH L1 Domino 6126, 4/15/16

(continued on page 26)



Top seller in the Thorson sale, TH L1 Domino 6041 going to the Roseth Bros.

ERNST HEREFORDS ANNUAL BULL SALE

In conjunction with Pfaff Angus

SAT., MARCH 31, 2018

SHAMROCK LIVESTOCK • O'NEILL, NE • 1:00 PM (CST)

**SELLING: 30 YEARLING HEREFORD BULLS
 AND 30 YEARLING ANGUS BULLS**

FEATURE SIRE - 11 TRAIT EPD LEADER



UPS SENSATION 2504 ET

CED 13.5 BW -1.1 WW 50 YW 80 DMI -0.1 SC 1.2 SCF 11.6 M 38 M&G 63 CEM 5.2 MCW 81
 UDDR 1.40 TEAT 1.40 CW 74 Fat -.005 REA .75 MRB .19 BMI\$ 22 BI\$ 19 CHB\$ 36



ERNST SENSATION 758

Son of Sensation 2504 that was lead bull in our class winning pen this year.



ERNST SENSATION 759

Daughter of Sensation 2504. For sale private treaty. Will look super at Jr. National.

FEATURE SIRE - 10 TRAIT EPD LEADER



KT BUILT TUFF 1010

CED 10.3 BW 0.2 WW 56 YW 77 SC 1.8 SCF 18.4
 M 26 M&G 54 CEM 10.9 UDDR 1.80 TEAT 1.90
 Fat -.025 REA -.06 MRB .19 BMI\$ 27 BI\$ 23 CHB\$ 25



2018 DENVER PEN OF THREE CLASS WINNER

VIDEOS AND CATALOG ON LINE AT WWW.ERNSTHEREFORDS.COM

BID AND BUY ON LINE AT DVAUCTION.COM

For more information contact:

Ernst Herefords

Marshall & Barbara Ernst • Kevin and Courtney Ernst
 Marshall (970) 381-6316 Cell 1364 Hilltop Drive
 Kevin (970) 218-7140 Windsor, CO 80550
marshall_ernst@msn.com WWW.ERNSTHEREFORDS.COM

(continued from page 25)

by BT L1 Domino 3305 to Tom Wolf, Huletta, WY, \$5,750.

Lot 15, TH L1 Domino 6409, 4/1/16 by CO L1 Domino 249 to Twila and John Naescher, Wall, SD, \$5,000.

Holloway Farms Bull Sale
February 13, 2018
Castor, AB

Auctioneer - R.C. (Bob) Balog

40 Hereford Bulls — \$3,500
7 Purebred Bred Heifers — \$2,700
30 Commercial Bred Heifers — \$2,475

High Selling Bulls:

Lot 28D, Hollow 180A Mikey 19D by JNHR Absolute 180A to Donald Colony, Donald, AB, \$16,500.

Lot 107D, Hollow 5A Batman 107D by Hollow 161X Andy 5A to Dwight and Ryder Cole, \$12,500.

Lot 148D, Hollow 5A Batman 148D by Hollow 161X Andy 5A to Jared Nemetz, \$8,000.

High Selling Bred Heifer:

Lot 168D, Hollow C57Y Amy 168D by CC 206P Gunner 57Y to Bannerlane Herefords, Livelong, SK, \$3,000.

Friedt Herefords
Annual Production Sale
February 14, 2018
Dickinson, ND

Auctioneer: Scott Weishaar

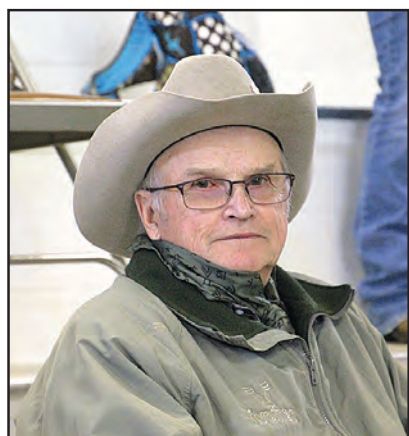
February 14, 2018

8 Two-Yr. Old Bulls — \$3,812
27 Yearling Bulls — \$3,740
19 Registered Yearling Heifers — \$1,921
62 Commercial Yearling Heifers — \$1,345

Top Selling Bulls:

Lot 752, FH L1 Domino 752 MD, 2/8/17 by H5 1147 Advance 417 to Andrew Koehn, Jamestown, ND, \$5,750.

Lot 736, FH L1 Domino 736 AF, 1/31/17 by CL 1 Domino 215Z to Boehnke Herefords, Kramer, ND, \$5,750.



Florian Woroniecki, Hebron, ND, purchased at the Friedt sale.

Lot 765, FH Navarro 765, 2/11/17, FH Navarro 242 MD to Terry Friedt, Mott, ND, \$5,750.

Lot 795, FH 242 Navarro 795, 3/3/17 by FH Navarro 242 MD to Matt Pendergast, Stevensville, MT, \$5,500.

Top Selling Heifers:

Lot 777, FH 2185 Dominette 777, 2/19/17, H5 9131 Domino 2185 to David Moorhead, Bernard, IA, \$2,800.

Lot 7100, FH 242 Miss Ava 7100, 3/14/17 by FH Navarro 242 MD to Bayers Hereford Ranch, Twin Bridges, MT, \$2,400.

Durbin Creek Ranch
Production Sale
Worland, WY
February 16, 2018

Auctioneer: Joe Goggins

84 Two-Yr Old Bulls — \$5,812
6 Horses — \$5,916
224 Commercial F-1 Baldy Replacement Heifers — \$1,126

Top Selling Bulls:

Lot 2, DCR 199B Cowboss 6072, 4/10/16 by NJW 79P 88X Cowboss 199B, to, Darrell Barnum, Stapleton, NE, \$13,000.

Lot 20, DCR 428B Manhattan 6009, 4/9/16 by Churchill Manhattan 428B, to Intermountain Heifer Development, Thermopolis, WY, \$12,000.

Lot 35, DCR 48B Babe Ruth 6055, 4/27/16 by Bar-RZ 980 Babe Ruth 48B to Cole Creek Ranch, Glenrock, WY, \$10,750.

Lot 5, DCR 199B Cowboss 600, 5/13/16 by NJW 79P 88X Cowboss 199B to Cole Creek Ranch Glenrock, WY, \$8,500.

Lot 27, DCR 428B Manhattan 6041, 4/13/16 by Churchill Manhattan 428B to Pam Holland, Worland, WY, \$8,500.

Lot 52, DCR 38Y Anchor 603, 4/8/16 by BP 44U Anchor 38Y, to Rauth Ranches Inc., Alva, WY, \$8,500.

Top Horse:

Lot 4A, DCR Sun Frosted Gold by Wades Frost, to John Carey Ranch, Boulder, MT, \$7,750.

Lowell Fisher Family
Production Sale
Feb. 15, 2018
Spencer, NE

Auctioneer: Chisum Peterson

14 Yearling Bulls — \$3,743
20 Two-Year-Old Bulls — \$3,187
3 Fall Bulls — \$4,733
25 Open Hereford Heifers — \$1,824
5 Baldy Heifers — \$1,050

Top Yearling Bulls:

Lot 45, Ponca 589C Domino 713, 3/12/17 by CL 1 Domino 589C to Greg Swim, Springview, NE, \$5,500.

Lot 43, Ponca 589C Domino 711,



Hoffman Sale Topper — H DeBerard 7454 ET by UPS Sensation 2296 ET, a Carload Bull, sold to Grassland Herefords/Express/Randy Ward for \$150,000.

3/9/17 by CL 1 Domino 589C to Tim Iverson, Long Pine, NE, \$5,000.

Lot 51, Ponca 589C Domino 733, 4/16/17 by CL 1 Domino 589C to Sobotka Cattle and Hay, O'Neill, NE, \$5,000.

Top Fall Bull:

Lot 3, Ponca 314A Domino 6111, 10/24/16 by CL 1 Domino 314A to Krohn, Bob Wausa, NE, \$5,700.

Top Two-Year-Old Bulls:

Lot 16, Ponca 314A Domino 631, 3/26/16 by CL 1 Domino 314A to Brady Wheatley, Rich Hill, MO, \$7,500.

Lot 3, Ponca 314A Domino 603, 2/28/16 by CL 1 Domino 314A to Shane Lechtenberg, Butte, NE, \$5,500.

Hoffman Ranch
Thedford, NE
Feb. 26, 2018

Auctioneer: Rick Machado

15 Carload Bulls — \$31,600
32 Fall yearlings — \$6,398
67 Two year olds — \$5,287
66 Yearling Bulls — \$5,511

Top Hereford Bulls:

Lot 50, H DeBerard 7454 ET, 3/14/17 by UPS Sensation 2296 ET, Carload Bull, to Grassland Herefords/Express/Randy Ward, \$150,000.

Lot 51, H Montgomery 7437 ET, 3/11/17 by UPS Sensation 2296 ET, Carload Bull, to JB Show Cattle, \$130,000.

Lot 1, H Advance 7115 ET, 2/2/17 by HH Advance 4075B ET, Carload Bull, Rocking G Land & Cattle/ Holden Herefords, \$50,000.

Lot 8, H Advance 7439 ET, 3/12/17 by by HH Advance 4075B ET, Carload Bull, to Harvie Ranching Limited/RSK Farms/Brost Land & Cattle, \$40,000.

Lot 53, H Advance 7460 ET, 3/14/17 by HH Advance 4075B ET, to Fredrickson Ranch/XA Cattle Company, \$25,000.

Lot 108, H Hometown 657 ET, 8/19/16 by NJW 73S W18 Hometown 10Y ET

to Pelton Polled Herefords/Topp Herefords, \$20,000.

Lot 76, H Outcross 7440 ET, 3/12/17 by Golden Oak Outcross 18U, Carload Bull, to Cottonwood Cattle Co., \$15,000.

Carmichael Herefords
49th Annual Production Sale
February 17, 2018
Meadow, SD

Auctioneer: Doug Dietterle

21 Yearling Hereford Bulls — \$4,095
37 Two-Year-Old Hereford Bulls — \$5,250

Top Lots:

Lot 2, KC Mr Freckles 17009, 3/18/17 by KC Mr Ribstone 10071 to Empire Ranch, Moorcroft, WY, \$9,500.

Lot 47, JC L1 Domino 6057D, 4/11/16 by KB L1 Domino 1202Y to Tom Davis, Belle Fourche, SD, \$9,000.

Lot 23, JC L1 Domino 6002D, 3/17/16 by KB L1 Domino 1202Y to Crossview Ranch, Hettinger, ND, \$8,500.

Lot 39, KC L1 Domett 16036, 3/26/16 by ECR High Class 3009 to Mike Maher, Isabel, SD, \$8,500.

Lot 57, JC L1 Domino 6068D, 4/15/16 son of JC L1 Domino 1029Y, to Todd Gerbracht, Meadow, SD, \$8,500.



Brice Carmichael making opening comments at the Carmichael sale.

Lot 60, KC L1 Domino 16075, 4/2/16 by HH Advance 2008Z to Froelich Ranch, Selfridge, ND, \$8,000.

**Rausch Bull and Female Sale
February 19, 2018
Hoven, South Dakota**

Auctioneer: Joe Goggins

**87 2-Year-Old Bulls — \$4,280
50 Yearling Bulls — \$5,310
30 Registered Heifers — \$3,383
183 Registerable Heifers — \$1,539
16 Commercial Heifers — \$1,350**

Top Selling Bulls:

Lot 43, R 3rd Revolution 4347, 3/23/17 by R Revolution 4510 to Bolton Ranch, South Dakota for \$11,500.

Lot 1, R Spartan 4417, 3/24/17 by UPS Spartan 2864, sold to Bolton Ranch for \$10,000.

Lot 60, R 4EVER 4986, 3/31/16 by Hyalite Foremost 302, sold to Bolton Ranch for \$9,000.

Lot 63, R Spartan 5696, 4/7/16 by UPS Spartan 2864, sold to Dutton Ranch, South Dakota, for \$8,000.

Lot 6, R 4EVER 5217, 4/3/17 by Hyalite Foremost 515ET to Crazy Cow Ranch, South Dakota, for \$7,750.

Lot 3, R New York 4057, 3/7/17 by SHF York 19Y Y02, sold to Monahan

Cattle Ranch, Nebraska, for \$7,500.

Lot 5, R Bonanza 5377, 4/6/17 by R Bonanza 4164, sold to Schneider Ranch, Inc., South Dakota, for \$7,500.

Lot 11, R. Centennial 5267, 4/4/17 by Churchill Red Bull 426B, sold to O'Reilly Polled Herefords, California, for \$7,500.

Top Selling Heifers:

Lot 151, R Miss New York 017, sold to Richard Scheid, North Dakota for \$6,750.

Lot 154, R Miss Encore 137, sold to Nancy Dose, MN, for \$6,250.

Volume Buyers:

Prosper Farms, Colorado – 9; Wolcott Farms South Dakota, – 6; Bolton Ranch – 6 Bulls.

Eichler Livestock, South Dakota – 55; Kolousek Farms, South Dakota – 28; Rockin B Ranch, Texas – 24; Koehn Herefords, North Dakota – 22 Females.



View from above at Carmichael Herefords, Meadow, SD.



Auctioneer Joe Goggins and Vern Rausch having some fun at the Rausch sale despite the cold weather.

*More sale reports
and pictures
next month!*



Wilson Lees

14TH VALUE ADDED BULL SALE

**FRIDAY
APRIL 6, 2018**

Right Cross Ranch Sales Facility
Kisbey, SK
2 PM sale start time
5% Volume Discount on 2 or more bulls

**FREE DELIVERY
UP TO 300 MILES!**

Proudly Presented By...

Blair Athol Farms
Duncan & Val Lees
306-577-9703
Jeff & Grace Lees
306-577-1375
www.blairatholfarms.com

**Haroldson's
Polled Herefords**
Chad Wilson
306-577-1256
www.haroldsons.com

Glenlees Farm
George & Annette Lees
306-455-2612
Corey & Tasha Lees
306-577-9971
www.glenlees.com

C&T Cattle Co.
Chris & Tina Lees
306-577-7370
Kurt Lees
306-421-8318

**ADD THE
MONEY
Stripe!**

TAKE ADVANTAGE
OF THE FAVOURABLE
EXCHANGE RATES!



For more information or
catalogues contact:
T Bar C Cattle Co. Ltd
306-220-5006
info@tbarc.com




AHA Office Moves

Kansas City, MO - The American Hereford Association opened for business Monday, Feb. 5, at its new headquarters location, 11500 N.W. Ambassador Dr., Suite. 410, Kansas City, MO 64153, in the Kansas City Northland.

The mailing address for the new location is P.O. Box 901570, Kansas City, MO 64190.

The AHA closed on the sale of its 1501 Wyandotte Street office building on Jan. 18 to KC Hotel Developers LLC.

"This is an exciting move for our members," said AHA President Kevin Schultz, Haviland, Kan. "Our new headquarters will be more accessible for Hereford breeders. We are looking forward to our members stopping in to visit with staff and conduct business. I think they'll enjoy its location near the interstate and improved parking. The new headquarters will also offer the flexibility needed to serve our growing membership."

The Hereford breed established its roots in Kansas City in 1920 when it became the first beef breed association to own its own headquarters. The original office was located at 300 West 11th Street.

In 1953 President Dwight D. Eisenhower dedicated the second AHA headquarters at 715 Hereford Drive before the Association moved to the Wyandotte Street location in 1986.

AHA Executive Vice President Jack Ward said, "The Hereford breed has strong ties with Kansas City. From our new location, the AHA will continue to provide exceptional service to Hereford breeders across the U.S."

Weishaar Receives Carmichael Scholarship



Aubrey Weishaar is the 2018 recipient of the James Carmichael Memorial Scholarship presented at the Black Hills Stock Show. In the fall Aubrey will be attending University of North Dakota majoring in Biology. She is the daughter of Shawn and Sarah Weishaar. She is pictured here with Dorothy Carmichael, wife of the late James Carmichael.

Ashe Honored with Distinguished Service Award



Murfreesboro, TN— The Tennessee Cattlemen's Association (TCA) awarded seven individuals for their hard work and dedication to the beef cattle industry during the 33rd Annual Tennessee Cattlemen's Convention and Trade Show in Murfreesboro on January 26, 2018.

These awards were created to recognize outstanding individuals in the various sectors of the cattle industry in Tennessee. Nominated by their peers, the awards presented recognized individuals who have excelled in stocker and cow-calf production, educational programs, business, and service to the beef cattle industry.

"All of this year's award recipients are dedicated and passionate about their work in the industry," said Charles Hord, executive vice president of the Tennessee Cattlemen's Association. "They are trustworthy and knowledgeable in their fields and widely respected among producers."

Alan Thomas of Zoetis Animal Health from Johnson City, TN won the Business Person of the Year, and Billy Ashe from Stantonville, TN won the John Bartee Distinguished Service Award. Senator Dolores Gresham from Somerville, TN was recognized as the TCA Legislator of the Year.

"I am totally shocked and honored," said Ashe. "With so many other people that they could have chosen besides me to win the John Bartee Distinguished Service Award, I'm just grateful to receive it this year."

Jerry Lay from Madisonville, TN won the Dr. Emmitt Rawls Outstanding Stocker Producer Award, and Mike Jones from Sweetwater, TN won the Dr. Clyde Lane Outstanding Cow-Calf Producer Award.

Two extension agents within the state were awarded for their dedication to education. Laurie Mobley from Houston County won the Dr. Jim Neel Outstanding Work in Beef Extension Educational Programs Award, and Dan Owen from Lincoln County won the Outstanding Work in 4-H Beef Programs Award.

North Dakota Hereford Association Awards



NDHA Breeder of the Year

Klein Family and Pat Weber Family

Pictured are Cody and Bruce Klein. Ashley Giedd Woolley made the presentation.



NDJHA Grant Winners

This year at the 2017 North Star Classic in Valley City, ND four juniors received grants to purchase a heifer during the Hereford sale.

The \$500 Klein family heifer grant was awarded to Kaleb Neshem. A new \$500 heifer grant was graciously donated by Larry and Richard Tinjum, Powers Lake, ND in memory of Andrew Dosch and was awarded to Elizabeth Neshem. The NDHA awarded 2 - \$250 grants to Lynzee Schepp and Emma Neshem. From left to right: 2017 Queen LaMae Turk, Lynzee Schepp (Minot), Emma Neshem (Berthold), Elizabeth Neshem (Berthold), and Kaleb Neshem (Berthold).



NDJHA Queen

Elizabeth Neshem
and Grant Winner of the
Friesz Heifer

**Thank you to
Olson Herefords
for donating
this year's heifer!**



The Herd Sires...

**NJW 73S M326
Trust 100W**

BW 3.8 WW 68* YW 118*
MILK 38* M+G 72*
REA .91* MARB .19*
**A HEREFORD
14-TRAIT LEADER!**
...Sons & Grandsons Sell!



**NJW
73S W18
Homegrown 8Y**

BW 2.7 WW 56
YW 99 MILK 45*
REA .59* MARB .06
Power & Paywt. ...Brothers & Sons Sell!



**NJW
73S W18
Hometown 10Y**

BW 2.2 WW 59
YW 101 MILK 37*
REA .50* MARB .37*
Real World Rancher Bull ...Sons & Brothers Sell!



**NJW
160Z 10W
Whit 33B**

BW 3.7 WW 65
YW 101 MILK 28
REA .46 MARB -.03
Bold, Rugged, Sound ...Sons & Brothers Sell!

SALE FEATURE! Proven Herd Sire



**HE SELLS
on March 28th!**

NJW 135U 10Y Hometown 27A

BW 1.0 WW 62 YW 97 MILK 33 / REA .58 MARB .18

Sale Broadcast By: **LiveAuctions TV**
KATIE COLYER 208/599-2962

**THE NED & JAN WARD
QUALITY PROGRAM**

Ned, Jan & Bell Ward 307/ 672-3248
Ned (c) 307/ 751-8298 • Jan (c) 307/ 751-9470
Cody Collins (c) 307/ 217-2701 • Jake Bare (c) 406/ 780-0056
247A Decker Road • Sheridan, WY 82801
njwardherefords@gmail.com

www.NJWHerefords.com

NJW

JF
**POLLED
HEREFORDS**



Bulls Raised
on Good Cows &
Wyoming Range (no creep)!
We DEMAND our Cows have GOOD udders, are
GREAT Mothers and Calves be VIGOROUS at Birth!

BULL SALE

WED. MARCH 28, 2018

AT THE RANCH • SHERIDAN, WY

**Selling 70 Balanced Trait, Big Bodied,
Easy Fleshing, Sound, Maternally
Powered Bulls!**

HEREFORDS FOR TODAY'S CATTLEMAN ...Thick, Long Lasting, Durable, Money Makers!



41E **AHA GE-EPD**
NJW 11B 028X HOSS 41E ET
BW -1.4 WW 59 YW 85 MILK 37 M&G 67 / REA .69 MARB .32



81E **AHA GE-EPD**
NJW 160B 028X HISTORIC 81E ET
BW 0.6 WW 56 YW 85 MILK 44 M&G 72 / REA .79 MARB .24



150E **AHA GE-EPD**
NJW 1B 72C ON DUTY 150E (Homozygous Polled)
BW 4.6 WW 65 YW 102 MILK 30 M&G 62 / REA .65 MARB .06



68E **AHA GE-EPD**
NJW 144Y 57C WOW 68E (Homozygous Polled)
BW 3.6 WW 51 YW 94 MILK 30 M&G 55 / REA .65 MARB .23



36E **AHA GE-EPD**
NJW 11B 028X LONG HAUL 36E ET
BW -2.5 WW 59 YW 85 MILK 37 M&G 67 / REA .76 MARB .34



32E **AHA GE-EPD**
NJW 11B 028X BIG RIG 32E ET
BW -0.5 WW 65 YW 92 MILK 37 M&G 70 / REA .56 MARB .30



89E **AHA GE-EPD**
NJW 67U 38Y DEAD ON 89E ET
BW 3.3 WW 53 YW 92 MILK 30 M&G 57 / REA .62 MARB -.07



93E **AHA GE-EPD**
NJW 71Z 4386 HOMELAND 93E
BW 3.6 WW 55 YW 87 MILK 32 M&G 60 / REA .34 MARB .43

Lake Elmo Inn Serves Hereford Beef

Some things are just “Meant to Be”

This month Greater Omaha is featuring a loyal customer from Minnesota, The Lake Elmo Inn.

By Connie Sieh Groop
Freelance Ag Writer
conniegroop19@gmail.com

As owner of The Lake Elmo Inn and The Lake Elmo Event Center in Minnesota, John Schiltz took possession of the restaurant in 1983. Six years ago, he found that adding Certified Hereford Beef® to the menu satisfies his customers and enhances his business. Like most who built success one day at a time, John's professional career path had many twists and turns. There is no doubt after you experience the Lake Elmo Inn, John is a culinary perfectionist and he has a passion for the business.

The Early Years

Nowadays you might see John being interviewed on the morning show in the Minneapolis area while he whips up a sizzling steak on the grill and explains the art of cooking, or you might read raving reviews by foodies in the newspaper. However, John began his professional career as a teenager learning the ropes. His fascination with the Inn began years earlier as John worked as a dishwasher in 1971 at the location east of St. Paul, MN. He soon was promoted to cook at “Ben's Elmo Inn.”

In 1975, he studied Culinary Arts at St. Paul Technical School. John earned the “Outstanding Student” award as

the teachers agreed that he was the student who would go the furthest in the industry. John stated that “everything came easy for me, I just loved cooking.”

After he graduated from Culinary School, John continued to work as a breakfast cook at Ben's. He shared with one of his instructors that he was bored. His instructor told him he needed to get experience in other locations.

Coincidentally, the instructor heard from a former student searching for cooks at Antler's Plaza in Colorado Springs, CO. Gene Tourville took John under his wing in 1976, working to train him as a night banquet chef. John climbed the ladder by working at every station in the hotel during the next six months. Gene insisted John move to other places even though John was a very valuable employee. Gene knew John needed more experience.

John took a job at The Registry Hotel in Bloomington, but he felt like an outsider so he got out of the business and got a job working for Schiffsky's Blacktopping.

“This was the only time in my life I worked five days with two days off, but I missed cooking,” he said. “My lunch on the jobsite was either a Reuben sandwich or lasagna. I buried my selection in blacktop an hour before lunch and it got good and hot. The other workers were envious of me as I was a chef at heart even when I wasn't working in a restaurant.”

A chef acquaintance offered John a job at the Amfac Hotel in San Francisco which he loved. One day he walked into the lobby of the Hyatt Regency Hotel and was amazed at the beauty and said, “I need to work for this company.”

He interviewed in Kansas City and was offered a job to help open the new hotel there, running their high-end restaurant. John moved with the company to Fort Worth, Minneapolis, and then to Des Moines. John was the second youngest chef in the Hyatt chain, receiving the “Outstanding Leadership” award at the annual banquet in San Francisco.



The Inn as it looks today. The building has had a few facelifts but the foundation that was built in 1881 is stronger than ever!



John's attention to detail is evident in every tender, juicy and flavorful 1881 Hereford steak he serves.

The Long Road to Return Home

After gaining experience as a chef and working at well-known hotels around the country, John returned to Lake Elmo for a friend's wedding in 1983. While there, he learned that Ben had put the Inn up for sale!

John met with Ben. He explained what he'd been doing and told Ben that this was the only restaurant he had ever wanted to own. Ben agreed to sell the restaurant to John.

At that time, the Hyatt offered him a position at a new property in Orlando, but according to John, “I needed to go back home and take this chance.” This is when John really started to believe, “Some things are just meant to be.”

John found investors, took over “The Lake Elmo Inn” on November 18, 1983, worked hard at cleaning and remodeling and opened for business Dec. 1.

For the next 28 years, John steadily grew his business and The Inn became a destination for special occasions, brunch, and fine dining. He knew the restaurant was getting “tired” and needed a lift. When asked what he specialized in, John never had an answer. He knew he was doing everything right by using quality products and not taking shortcuts but needed to create an identity.

Serendipity

In 2011, the protein specialist from Sysco, MN, stopped to talk about the Certified Hereford Beef® program. John knew what a Hereford was, but he had used Angus product and thought what he was using was the best available.

The specialist explained the program and identified many Hereford ranchers in his area. This offered something new and different. Another meeting was set to cook and taste the product, trying Greater Omaha's 1881 Hereford Beef® against the Angus product he was using. The 1881 label on the box signified that these steaks were very unique. John learned about Greater Omaha's “cream of the cooler” that can only be sourced from a Hereford sired “Black Baldy.” Coincidentally, the specialist explained, 1881 was the year the American Hereford Association was founded. John interrupted and said, “You can stop talking now. Do you know what year The Lake Elmo Inn was built? 1881!” He said, “Some things are just meant to be.”

That protein specialist from Sysco

(continued on page 36)



The Lake Elmo Inn is one of Sysco MN's best Hereford supporters and in appreciation of his business they shared this prestigious award with John and Chris.



When John reopened with the new Hereford Beef he was able to find the perfect mascot to have on display outside of the restaurant. It got a lot of attention!

AUCTIONEERS

BALOG Auction Services, Inc.

Box 786
Lethbridge, Alberta T1J 3Z6
Canada
(403) 320-1980
1-877-320-1988
Fax: (403) 320-2660
www.balogauction.com



DALE STITH Auctioneer

5239 Old Sardis Pike
Mays Lick, KY 41055

cell 918-760-1550
dalestith@yahoo.com



Lynn Weishaar Livestock Auctioneer

13567 SD Highway 79
Reva, SD 57651

605/866-4670

Seth Weishaar

Livestock Auctioneer

Bringing purebred & commercial cattlemen together.

♦ Purebred

♦ Commercial

11639 Snoma Rd.
Belle Fourche, SD
57717
(605) 210-1124
(605) 892-2640



ARKANSAS

Moon Herefords

www.moonherefords.com

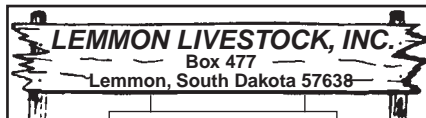
Canadian and Carpenter-Williams Genetics

A total Performance Program
producing practical/efficient
Horned Herefords for a practical world.

Harrison, Arkansas
pamoon@windstream.net
870-743-5003 (O)
870-715-7244 (C)



AUCTION BARN



Phone 605-374-3877
or 1-800-822-8853

Paul Huffman, General Manager • 605-645-2493
Chad Hetzel, Assistant Manager • 701-376-3748

• Sales Every Wednesday •

We feature
Hereford & Hereford-X Cattle in Special Sales
www.lemmonlivestock.com

CALIFORNIA



PEDRETTI DOMINOS

1975 E. Roosevelt Rd.
El Nido, CA 95317

Gino & Mona Pedretti (209) 756-1609
Mark St. Pierre (209) 233-1406
Gino Pedretti Jr. (209) 756-2088

Schohr Herefords

P.O. Box 391 • Gridley, CA 95948

Carl & Susan: 530-846-4354

Steven & Joseph: 530-864-2855

E-mail: ricencows@schohr.com



Selling bulls and heifers
by private treaty.
Contact us for semen.

CANADA

BAR PIPE Hereford Ranch

Generation after generation, same trusted brand.

Jay Cross: (403) 978-2767
Doug Finseth, Mgr.: (403) 938-7726
Okotoks, AB
www.barpipes.com



Brad & Veronica
Doenz
(403) 642-3894

E-mail: doenzb@gmail.ca
www.doenzranches.net

PO Box 362, Warner, AB T0K 2L0
3.2 km E of Warner on #504 & 3.2 km N on Rg Rd #170
Sale: Dec. 7, 2017 @ 1 p.m. at the Ranch



Hills Galore Stock Farms

Alvin and Mary-Kate
Pawlitza
Julia, Alex
and Georgia

ABBEY, SASKATCHEWAN

Tel | 306/689-2597

Email | mk@hillsgalore.com

Web | www.hillsgalore.com

Mailing Address | Box 179, Hazlet, SK S0N 1E0

Lilybrook Herefords, Inc.

Practical, Efficient Cattle Are Our Livelihood!

Andy Schuepbach
Box 2044
Claresholm, AB, Canada
T0L 0T0



Phone: 403/625-4693 • Cell: 403/625-6316
Fax: 403/625-1500

andy@lilybrookherefords.com
www.lilybrookherefords.com



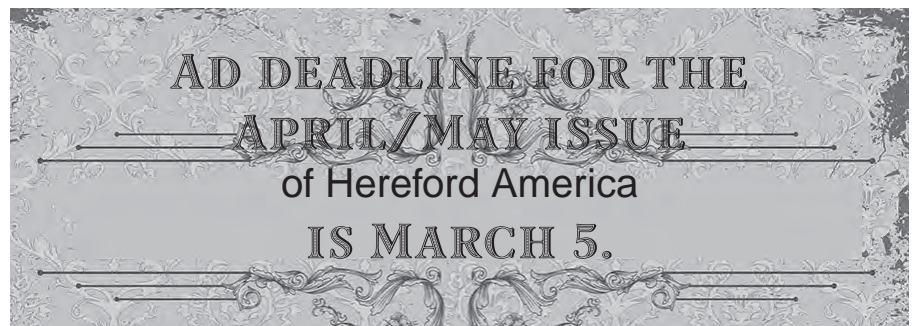
43342 Millar Ave
Saskatoon, SK S7K 7G9
Ph: 306-933-4200
Fax: 306-934-0744
info@tbarc.com
www.buyagro.com

CHRIS POLEY: 306-220-5006
TED SERHIENKO: 306-221-2711
SHANE MICHELSON: 403-363-9973
BEN WRIGHT: 519-374-3335

ULRICH HEREFORD RANCH INC. "Performance Tested Herefords"

Hans Ulrich Peter Ulrich
(403) 625-2237 Cell (403) 625-1036

Email: peter@ulrichherefords.com
Website: www.ulrichherefords.com
Box 843, Claresholm, AB T0L 0T0
From Claresholm, 8 mi. (12.8 km) E, 4 mi. (6.4 km) N, 1/4 mi. E.



COLORADO

Ernst Herefords

Marshall Ernst Family
Windsor, CO 80550
970-381-6316
www.ernstherefords.com

Bull Sale • March 31, 2018 • 1 p.m.
at Shamrock Livestock • O'Neill, NE



High Altitude
PAP Tested
Since 1980 at 8,000 ft. +

MIKE FUCHS HEREFORDS

3673 Co. Rd. 14
Del Norte, CO 81132
Mike 719/657-2519

• Annual Sale Dec. 2, 2017 •
mikefuchsherefords@gmail.com



E-mail: jbh@herefordamerica.com
or phone 605/866-4495



38th
ANNUAL SALE

Tuesday,
Oct. 16, 2018
800-351-5362

970-878-5362 • 970-270-4445 cell

Mary Strang & Family

2969 County Road 8 • Meeker, CO 81641

strangherefords@gmail.com

www.strangherefords.com

IDAHO



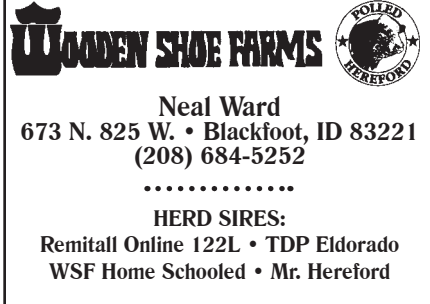
Shaw Cattle Co.

22993 Howe Rd.
Caldwell, ID 83607
www.shawcattle.com

Greg: (208) 459-3029
Sam: (208) 880-9044
Tucker: (208) 899-0455
Ron Shurtz: (208) 431-3311

THE BULL BUSINESS BRANDSM

ANGUS HEREFORD RED ANGUS



WOODEN SHOE FARMS

Neal Ward
673 N. 825 W. • Blackfoot, ID 83221
(208) 684-5252

HERD SIRES:

Remital Online 122L • TDP Eldorado
WSF Home Schooled • Mr. Hereford

IOWA



Johnson Herefords

Since 1918

Registered Horned & Polled Herefords

Jack & Lynne Johnson

2165 240th St.

Milford, IA 51351

Jack: 712-260-3650 • Lynn: 712-330-7470

Good Doin' Genetics

WIESE & SONS

Bulls, Females, Semen

Now in our 100th year of producing top Herefords

P.O. Box 305

Manning, IA 51455

712-653-3678

www.wieseandsons.com

**Deadline
for the
April/May
issue
is
March 5th.**

**Hereford
America**

ILLINOIS

BF Baker Farms

1278 E. 20th Rd. • Streator, IL 61364
Fred • Debby
Sarah • Susan • John
Phone: (815) 672-3491 • Mobile: (815) 257-3491
Fax: (815) 672-1984

Superior Hereford Genetics

LOEHR HEREFORD FARM
P.T. "Pete" Loehr
113 W. Northgate Rd
Peoria, Ill. 61614
309/692-6026 or 1-800-937-BEEF
- The Best of the Best -
Line One, Canadian & Pure Gold

QUALITY & PERFORMANCE SINCE 1919

 **Milligan Herefords**

481 Church Rd
Kings, IL 61068

JAMES (815) 562-4946 ROBERT (815) 562-6391 MALCOLM (815) 562-5879
(815) 761-1523

STEPHENS HEREFORD FARM **STEPHENS TRAILER SALES**
Eby aluminum livestock

P.O. Box 168 • Taylorville, IL 62568
Mark Stephens
217-825-7913 Cell
mark_stephens46@yahoo.com
Danny Stephens, Trailers • 217-824-2815

LIVESTOCK EQUIPMENT

 **TITAN WEST INC.**

PORTABLE & STATIONARY LIVESTOCK EQUIPMENT
FAWCETT ENTERPRISES, INC.
36111 211th Street ~ Miller, SD 57362-6814
For More Information Contact:
RANDY FAWCETT
Phone 605/853-3930 • Cell 605/461-9346 • Fax 605/853-3310
CUSTOM DESIGNS AVAILABLE

.....
www.herefordamerica.com

Hereford America
North America's Largest Privately Owned
Hereford Newspaper.

Call 605/866-4495 for more information.
or E-mail: jbh@herefordamerica.com


www.herefordamerica.com
.....

KANSAS

 **Alexander Farms**
Polled Herefords

LINEBRED KING DOMINOS

John Alexander Family
2756 S. Donmyer Road
Gypsum, KS 67448-9414
Home: (785) 536-4931
alex farms@eaglecom.net
facebook.com/alex farmsbeef
— Breeding Stock, Semen & Flushes For Sale —


 **BERAN BROS.**
ANGUS

HEREFORDS 1350 NE 100 Ave.
Claflin, KS 67525

Craig Beran, Jr. Gerald Beran, Jr.
620/587-3709 620/587-3407
620/786-9703 (cell) 620/786-9569 (cell)
Sale March 19, 2018
CATTLE FOR SALE AT THE RANCH

BTS HEREFORDS

Bruce & Tracy Schlickau
14601 South McNew Road
Hutchinson, KS 67501
Phone: 620-459-6576



Location: 5 miles south of Hwy 96 & 14 jct.
1 mile east, then 3/4 mile south
Quality Herefords by private treaty sales

 **DAVIS HEREFORDS**
Dean & Danny

(785) 256-4643 • (785) 256-4010

29111 Keene Eskridge Rd.
Maple Hill, KS 66507
13 miles west of Topeka on I-70.
3 miles south on Exit 342.

Deewall Family

Mike Herefords

1074 Hwy. 1 Coldwater, KS
620-635-6511 67029
Mike & Jane 620-635-5978
Deewall (cell)
www.deewallherefords.com

4V RANCH DOUTHIT HEREFORDS

 600 S Lorraine St
St. Francis, KS 67756

 **MARGO DOUTHIT**
(785) 332-2323
Cell 332-4240
4vranch1@gmail.com
4vranchdouthitherefords.com

Bulls & Heifers For Sale **Douthit Herefords**

Walter, Megan & Chuck

Douthit-Downey Land & Cattle, LLC
Megan's cell (785) 332-8575
Chuck's cell (785) 332-4034

1805 RS 115
St. Francis, KS 67756
www.douthitherefords.com
megan@douthitherefords.com

FLORY POLLED HEREFORDS

Mike Flory & Family
618 E. 800 Rd.
Lawrence, KS 66047
785/865-3444 • 785/979-3984
mike.flory@sbcglobal.net
JB Trojan & Polled LI

*Performance tested since 1979.
Functional cattle with multi-trait performance.*

 FOR ALL YOUR NEEDS IN HEREFORD CATTLE
IN KANSAS AND SURROUNDING STATES

THE KANSAS HEREFORD ASSOCIATION
Tom Granzow, Secretary-Manager
765 South 3000 Road
Herington, Kansas 67449
785-466-2247 785-466-2226 (FAX)
kansashereford@tctelco.net
www.kansashereford.org

Gustafson Herefords

Gus, Deb and Shelbi Gustafson

7477 Davis Creek Road
Junction City, KS 66441
785-238-7306
I-70 exit 303... 7 miles South
Visitors Always Welcome

Granzow Herefords

Tom, Mary & Tobyn Granzow
765 South 3000 Road
Herington, KS 67449
785/466-2247 or 785/466-6438
www.granzowherefords.com

 MEMBER OF THE PTP ALLIANCE

FRANK HUG & SONS

**Bulls & Females
For Sale Private Treaty**

 2556 W. 125th Street
Scranton, KS 66537 

Bob Hug 785/230-0434 Ed Hug 785/230-7597
fhug-sons@excite.com


JENSEN BROS.
Jensen Livestock Agency

Kevin & Sheila Jensen
P.O. Box 197
Courtland, KS 66939
785-374-4372
Kevin: 785-243-6397
jensenks@courtland.net
www.jensenbros.net

Annual Bull Sale: March 1, 2018
See us for your next herd sire!

MALONE Hereford Farm

1371 Road F
Emporia, KS 66801
Phone: 620-342-7538
Alton's Cell: 620-794-2358
ammalone@lcwb.coop

 Alton, Marie, Brian, Dustin and Michelle Malone

 **MEITLER**

1237 N. 13th Rd
Lucas, KS 67648

Gene: 785/658-5612
heartlandhay@wilsoncom.us
Darris: 785/658-5208
Clint: 785/658-7028
www.meitlercattle.com

MILL CREEK RANCH

20635 Hessdale Rd
Alma, KS 66401
David Breiner (785) 449-2841
David cell (785) 456-4790
Chad Breiner (785) 564-2091
Ryan Breiner (785) 207-3070

www.millcreekranch.com
millcreekranch@embarqmail.com
Production Sale Last Tuesday in February
MANHATTAN, KS

"Best of Both Worlds Sale" • 4th Mon. in March
12 noon at the ranch • Dwight, KS

 **OLEEN BROTHERS**
HEREFORD • ANGUS

Also selling
70 F-1 Black
Baldy heifers
with calves,
75 Fall bred
heifers
20 Quarter
Horses

Jan: 785-482-3383 • Arden: 785-466-1422
Box 8, Dwight, KS 66849
E-mail: jakoleenbros@tctelco.net
www.oleenbrothers.com

 **Sandhill Farms**

Registered Polled Herefords
Kevin, Vera & Tyler Schultz
2408 280th Ave., Haviland, KS 67059
Phone: (620) 995-4072 • Cell: (620) 546-4570
Tyler Cell: (620) 546-1574
e-mail: kevin@sandhillfarms.com
website: www.sandhillfarms.com
Sale March 24, 2018

Schlickau Herefords
Since 1913

Cattle for Sale Private Treaty

Lois
James and Charlene H: 620/465-7749
H: 620/465-2691 14506 S. Victory Rd.
Cell: 316/734-3700 Haven, KS 67543
schlickauranch@ gmail.com schlickauhfd@embarqmail.com

SMITH CATTLE



Reg./Com. Polled Herefords
Redfield, Kansas

Farm: 620/756-4138 • Cell: 620/365-1737

MINNESOTA

BELL'S RAWHIDE RANCH
Horned & Polled Herefords
F1 Baldy Heifers
Quality Cattle & Horses
6006 76th St. SW
Motley, MN 56466
Roy & Tammy Bell
(218) 397-2579
cell (218) 296-1960
2.5 miles East
of Leader

CARLSON FARMS
CF
1470 10th St. N.E.
Murdock, MN 56271
rbmrc1@gmail.com
Ross, Beth,
Mallory, Regan
320-366-3726
Rob, Jean,
Brett, Bailey, Brook
320-366-3970

Dakitch Hereford Farms
David, Lorie, Michael & Mason Kitchell
Matthew & Darci Kitchell
3471 State Highway 200
Ada, MN 56510-9260
Quality, Performance Cattle For Sale
www.dakitchfarms.com 701-799-7690
dakitch@arvig.net Visitors Always Welcome

Delaney Herefords
Jerry & Shelly Delaney
2071 Co. Rd. 101
Lake Benton, MN 56149
Home: 507/368-9284 • Cell: 507/820-0661
jdh@delaneyherefords.com
www.delaneyherefords.com
Cattle for sale at all times.

DOSE FAMILY HEREFORDS
Building a family tradition on maternal cow power
Allan & Joleen Dose Family
Arlington, MN 55307 C: 320-583-8002
allandose@frontiernet.net
www.dosefamilyherefords.com

JIM, JERI, JODY, JAIME HANSON HEREFORDS
37590 110th St
Comfrey, MN 56019
507.877.3631
jerihanson@hotmail.com
Jim's Cell 507.829.6756 • Jeri's Cell 507.828.2211
Jody's Cell 507.276.8577 • Jaime's Cell 507.276.8237

JMF Herefords and Sim-Angus
ANNUAL BULL SALE,
FIRST SATURDAY IN FEBRUARY
Jared, Makayla, Jaelyn, Tayton and Ty Flower
Holloway, MN
Jared: 320-413-0483 www.jmfherefords.com
Makayla: 605-690-6050 jmflower.11@hotmail.com

Ad deadline is the 5th!
Hereford America
605/866-4495
www.herefordamerica.com
jhb@herefordamerica.com

Jones Farms
Dave & Susan Jones
31490 E. State Hwy. 112
LeSueur, MN 56058
(507) 665-3962
(507) 317-5996 cell
Breeding Stock For Sale
Bulls, Heifers, Club Calves,
F1 Baldy Heifers

KLAGES HEREFORDS
Quality seedstock
for sale
Jeff & Mary Klages
64090 410th St
Ortonville, MN 56278
ph/fax (320) 273-2163
jmkklages@fedtelnet.net

Kroening Black Herefords
DNA Profiled - Performance
Registered Black Herefords
Richard and Julie: 218-435-1223
Mike & Bridget: 218-230-1173
Fosston, MN
juliek@gvtel.com

Krogstad Polled Herefords
Les Krogstad Darin Krogstad
3348 430th St. 16765 Welch Shortcut
Fertile, MN 56540 Welch, MN 55089
(218) 945-6213 (651) 485-0159
(218) 289-5685 (cell)
les@krogstadpolledherefords.com
www.krogstadpolledherefords.com

Lawrence Herefords
Since 1957
2477 N.W. Main St. • Coon Rapids, MN 55448
Cattle at Princeton, MN
Bulls & Females For Sale
Doug & JoAnn (763) 755-4930
Bryan & Marytina (763) 389-0625
Bradley & Brigitte (612) 720-1311
E-mail: joannlawrence8@msn.com

Lind Polled Herefords
Since 1958
• Dan • Erika • Susie • Judy •
Contact: Dan Lind
200 E. Grove St.
Rushford, MN 55971
(507) 864-2298
cell: (507) 458-2080
e-mail: Lind2@acegroup.cc
Visitors Always Welcome

The Livestock Link For All Your Livestock Video Needs
Call Marc Hotchkiss
605/210-1956

Lost Meadows Farm
Registered
Polled Herefords
Shawn & Dawn 36860 Rethwisch Lane
Frazee, MN 56544
218.334.4045
Dave & Rhonda Eckert 18513 405th Ave
Frazee, MN 56544
218.334.5732

Polled Herefords • Sales
McIver's Happy Acres
David, Maryln, Scott and Tom McIver
15624 340th Ave. Phone: 320-283-5776
Farwell, MN 56327 Fax: 320-283-6044
mcivers@runestone.net
www.mcivershappyacres.net

Nelson Polled Herefords
Phil • 507-629-3375 1616 Co. Rd. 11
Will • 507-626-0239 Tracy, MN 56175
E-mail: wnelson@westtechwb.com
Herd Bulls
NPH Active in L III TFL X651 Tested 1616ET
EF Beef P230 Frank B497
T.P.R. EFBeef U248 Fellis A246
GENESEEK NPH Tender 10 Domino 428
NPH Tender 6 Domino 407
Proud to be a Hereford Breeder

Minnesota Hereford Breeders
Secretary/Treasurer
Kory and Michele Kruse
2075 51st St.
Ellsworth, MN 56129
507-920-5474
kmkruse96@gmail.com
minnesotaherefordbreeders.com

"Quality" not "Quantity"
Hereford Cattle
Schmidt Herefords
Pipestone, MN 56164
John A. Schmidt John E. Schmidt
787 70th Ave. 905 7th St SW
(507) 825-2383 (507) 825-2786
cell: (507) 215-1037 cell: (507) 215-1174

Contact us for
your Hereford
advertising needs
Hereford America
605/866-4495
www.herefordamerica.com
jhb@herefordamerica.com

SPRINGWATER SPH Polled Herefords
Chad, Lacey, Easton & Troy Williamson
Michoen Williamson Garretson, SD
Pipestone, MN 507/597-6221
507/825-5766 605/254-7875
507/215-0817 twilliamson@alliance
springwater@sstv.com com.net

SCHAFFER HEREFORDS
Lester & John Schaffer
FOR SALE:
64664 170th St. Bulls
Buffalo Lake, MN 55314 Females
(320) 833-2050 Semen
(320) 582-1458 John cell
(320) 582-0489 Les

Walsh Family Herefords
Tom and Lisa Walsh
705 100th St. SE, DeGraff, MN 56271
Home: 320-875-3073, Cell: 320-760-2607
tom.walsh@riverviewllp.com
Bull Sale in the Spring with our partners,
Starmak, from Tea, SD.
We sell a few select females private treaty.

Inquire about the total package ... videoing, video sale, online bidding and clerking.

The Livestock Link
THE BEST IN LIVESTOCK VIDEO PRESENTATION

Contact us for more information.
Marc Hotchkiss - 605/490-1513
marc@thelivestocklink.com
13823 Beaver Creek Place, Reva, SD 57651
Phil Eggers
605/351-5438
phil@thelivestocklink.com
Check out the latest VIDEOS at www.thelivestocklink.com

MONTANA



Byron Bayers
248 Bayers Lane
Twin Bridges, MT 59754
(406) 684-5465
bayers@3rivers.net



Private Treaty Sales
www.beeryherefords.com
Eastern Montana's finest Herefords
~ Horned & Polled ~ Matt & Krista
Joanne 406/773-5721
406/773-5710 cell 406/979-5720
Also selling Red Angus bulls & females

DALLAS POLLED HEREFORDS

Don Dallas
Box 532
Canyon Creek MT 59633
406/368-2244 Ranch
406/443-5110 Office

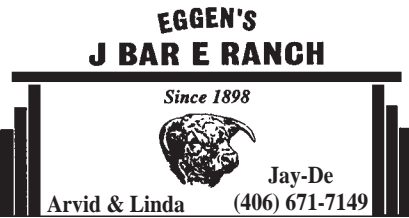
"Mountain Raised Performance Cattle"

DUTTON HEREFORDS



190 Sunnyside Ln.
Gold Creek, MT 59733
Dean (406) 288-3330
Cell (406) 240-8014

Registered bulls and commercial
bred heifers for sale.



Jay-De
Arvid & Linda (406) 671-7149
(406) 895-2657 Lorrie
(406) 765-7068 cell (406) 765-8219
Box 292 • Plentywood, MT 59254



Mark, Della, Lacey & Jane'a Ehlke
PO Box 178 • Townsend, MT 59644
Mark: 406/439-4311 • Della: 406/439-4300
www.ehlkeherefords.com

FEDDES Herefords

www.feddes.com
TFeddes@msn.com

Dan (406) 284-6810 • cell 570-1602
Tim (406) 284-6990 • cell 570-4771

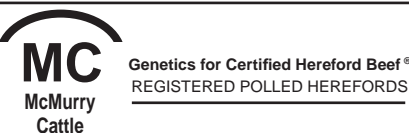
2009 Churchill Road
Manhattan, MT 59741-8122

Hereford America

North America's Largest Privately
Owned Hereford newspaper

Hereford news from around the
region. The publication that is read
from cover to cover.

www.HerefordAmerica.com
jbh@herefordamerica.com



Genetics for Certified Hereford Beef®
REGISTERED POLLED HEREFORDS
Fred, Doreen and Rebecca McMurry
2027 Iris Lane Ranch 20 miles
Billings, MT 59102 east of Billings on
(406) 254-1247 Squaw Creek Road
(406) 697-4040 (cell) www.mcmurriecattle.com
(406) 254-1247 (fax) mcmurriecattle@gmail.com



4551 State Rt. 514
Glenmont, OH 44628
Conard & Nancy Stitzlein (330) 378-3421
Matt Stitzlein (330) 378-3487



MOHICAN WEST
3100 Sportsman Park Road
Laurel, MT 59044
Phone/Fax (406) 633-2600
Terry Powlesland (406) 633-2810



REAL WORLD - HONEST - GUARANTEED BULLS

Ace & Tara Diemert
230 3700 Rd South
Lothair, MT 59461
406/432-3412
ngrhereford@northerntel.net

BREEDING HEREFORD
CATTLE SINCE 1945



Steer In Trailer Sales



New & Used
Stock & Horse Trailers
Flatbeds - Mats -
Cargo Trailers

Located at I-90 and Hwy. 287

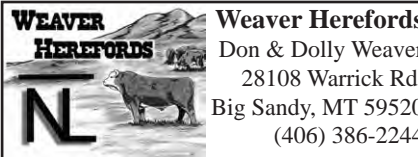
29 Bronco Drive (406) 285-4300
Three Forks, MT 59752 Fax: (406) 285-4146
www.steerin.com 1-877-335-5372



10069 River Road Chuck & Kathy Kohlbeck
Bozeman, MT 59718 Chuck, cell (406) 580-8255
Garrett & Katelyn Knebel
(406) 580-9565
SHR@storeyherefordranch.com



HORNED P.O. Box 330055 POLLED
Gold Creek, MT 59733
BULLS & HEIFERS FOR SALE
Richard & Shirley (406) 560-8122
Bruce (406) 544-1536
e-mail: bruce@thomasherefords.com
www.thomasherefords.com



e-mail: dwhrfd@gmail.com
www.weaverherefords.com

Heifers for sale private treaty in the fall.
Annual bull sale the first Monday in March.



www.wichmanherefords.com

Registered bulls and females
for sale by private treaty.
Proven bloodlines, longevity, performance, functional
justin@wichmanherefords.com

Justin & Carmen Wichman
PO Box 29 • Moore, MT 59464
Home: (406) 538-8997 • Cell: (406) 350-3123

NEBRASKA

(continued on next page)

BLUEBERRY HILL FARMS



POLLED HEREFORD CATTLE
Doug Bolte,
Manager

103 South Grandview Drive
Norfolk, NE 68701

Cell Phone 402/640-4048
email: dbolte@telebleep.com

www.blueberryhillscattle.com

Visitors Always Welcome!

ESTERMANN HEREFORDS

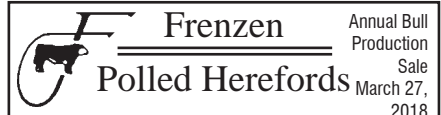
— Continuous Herd Since 1899 —
32 years of Canadian breeding

Joe, Marlene & Dan Estermann
35219 S. Somerset Rd.
Wellfleet, NE 69170
Phone: 308-963-4473
E-mail: jester mann@nebnet.net

Quality Cattle That Work



Lowell & Carol 48979 Nordic Road
(402) 589-1347 Spencer, NE 68777



Females and Club Calves
for sale at private treaty.

Galen, Gwen and Eric Frenzen
50802 N. Edgewood Rd. • Fullerton, NE 68638
Galen's Cell: (308) 550-0237 • Eric's Cell: (308) 550-0238
www.frenzencattle.com

GIBSON HEREFORDS

Line 1 Breeding

LARRY AND KAREN GIBSON
35570 W. Gibson Rd.
Wallace, NE 69169
308-387-4580 ~ 308-530-6435
kgibson@nebnet.net



Show Heifers & Steers

Randy Helms Cody Helms
73031 Rd 419 308-842-9071
Holbrook, NE 68948
308-493-5312

HENKEL POLLED HEREFORDS

Pure Station
Polled L1 Dominos

GENE ERIC
402/729-5866 402/239-9838

56095 - 715 Rd. • Fairbury, NE 68352
henkelhereford@hotmail.com

HUWALDTS HEREFORDS

86423 558 Ave • Randolph, NE 68771

Ed & Marsha
Home: 402/337-0784
Cell: 402/360-4387

Angie
Cell: 402/360-4796

Keith & Virginia
402/337-0307

Email: huwed@live.com
Website: www.edhuwaldt.com

Polled Hereford Bulls & Females For Sale at Private Treaty.
Visitors Always Welcome!



Milk, Muscle Performance & Weight

Bulls and Females
Always For Sale, Females
that Visitors Always Welcome! that
Perform Prolific + Disposition Produce

Jack & Bev Beeson 402/375-3404
Wayne, NE 68787 cell: 402/375-9027

Feed Efficiency, Carcass,
Moderate size, High gain
Documented proof

KEG HEREFORD RANCH

Ken & Marilyn Stephens
39753 906th Rd., Valentine, NE 69201
402-376-1267

LARSEN'S POLLED HEREFORDS

CATTLE FOR BOTH PUREBRED
AND COMMERCIAL PRODUCERS

Larry Larsen
2252 CR 25
Decatur, NE 68020
402-687-2532

Selling at
Shamrock Livestock
in O'Neill
April 12, 2018

Hereford America

North America's Largest Privately
Owned Hereford newspaper

Hereford news from around the
region. The publication that is read
from cover to cover.

www.HerefordAmerica.com
jbh@herefordamerica.com

(continued from previous page)

NEBRASKA

MELCHER HEREFORDS, INC.

Hereford Bulls For Sale
Sat., January 26, 2019
at the ranch • Page, NE • 1:30 PM

Also for sale privately:
45 head RWF and BWF bred heifers

Don: 402-336-7194 • Kevin: 402-340-6189
86287 Voyager Rd., Page, NE 68766

**MONAHAN
CATTLE
COMPANY**

Brand of Quality
Herefords

P.O. Box 306 • Hyannis, NE 69305

James (308) 458-8019
Bryan (308) 458-8021
Bob (308) 458-8024

NHA
NEBRASKA HEREFORD ASSOCIATION
Sheri Wieden • Executive Director
402-520-2296 • sheriwieden@gmail.com
13287 East B-Line Road
Blue Springs, NE 68318

**Ridder
Hereford Ranch**

John & Mary Ridder
Callaway, Nebraska

308/836-4430

mailbag@RidderRanch.com
www.ridderranch.com

• Sale first Thursday in February •

**SCHUTTE &
SONS**

1417 Road 2100
Guide Rock, NE 68942-8099
Ron Schutte
402-756-3462 • 402-746-4378 cell
rnschutte@gtmc.net
www.gtmc.net/schutte

Schroer Herefords

Lavern Schroer Family
2924 Road P ~ Nelson, NE 68961
402-756-7834
cell ~ 402-879-8056

Line One Herefords.
Bulls and females for sale by private treaty.

Cattle bred up, not fed up!

**Hereford America**

Ad deadlines
5th of preceding
month

E-mail to:
jbh@
herefordamerica.com

**STEWART HEREFORD RANCH**

Jay and Kaye Stewart
45717 875th Rd
Newport, NE 68759

Phone: (402) 244-5457
Cell: (402) 760-0961

**TEGTMEIER
POLLED HEREFORDS**

58th Annual Sale March 12, 2018
71556 609th Ave.
Burchard, NE 68323
Russ: (402) 865-5805
www.tegtmeierpolledherefords.com



Scott & Judy McGee 1900 G Street
Fairbury, NE 68352
Blake McGee
Melissa & Brandon Buehler Scott's Cell: 402-300-2659
Darcy & Mick Pesek www.valleycreekranch.net

**VAN NEWKIRK
HEREFORDS**

Quality Herefords Since 1892

Sale: January 15, 2018

☆ Joe Van Newkirk
Oshkosh, NE 69154
Phone: 308/778-6049

www.vannewkirkherefords.com



Owners: Vince, Mary, Ryan & Bryson Bickel ~ Jerry & Suzy Bottorff

Contact Vince at 308-282-0416 or Cell: 308-360-0336

2821 630th Rd
Gordon, NE 69343

www.vinmarcattle.net
Email: vmbickel@gpcom.net

Registered Black Angus & Hereford
Visitors Welcome Anytime!

OHIO

Videoing, video sales, online sales and sale clerking.

Buckeye
Hereford Association

Lisa Finnegan Keets, secretary
440-320-6193
ohioherefordlady@yahoo.com

Sale • March 2017 • Columbus, OH
www.BuckeyeHerefords.com



Livestock Videoing • Video Sales
• Bid-by-Click Online Sales

THE BEST IN LIVESTOCK VIDEO PRESENTATION

Contact us if you have questions.

Marc Hotchkiss • marc@thelivestocklink.com

Phil Eggers • phil@thelivestocklink.com

Aaron Friedt, Online Sales

aaron@thelivestocklink.com

13823 Beaver Creek Place, Reva, SD 57651

www.thelivestocklink.com

OREGON



Mike & Carol Allison
70641 Kunze Lane • Boardman, OR 97818
(541) 571-7139
(541) 571-7313



**BIRD
HEREFORDS**

David and Lynda Bird
Phone: (541) 742-5436
E-mail: bird@pinetel.com
45863 Crow Rd.
Halfway, Oregon 97834

Chandler Herefords Inc.

Wide, Thick, Long, Correct, Beautiful, Balanced Herefords
127 Years in the business

541-523-2166

George

541-403-0125

Duane

541-403-0124

17578 Chandler Lane

Baker City, OR 97814

www.chandlerherefords.com

E-mail: chandlerhereford1889@yahoo.com



Hereford America
605/866-4495

www.herefordamerica.com

jbh@herefordamerica.com

**HARRELL
HEREFORD RANCH**

42590 SALMON CREEK ROAD
BAKER CITY, OR 97814

Bob Harrell, Jr. Don Schafer
541/523-4322 541/403-0008

Registered Hereford Cattle and Quarter Horses
ANNUAL SALE FIRST MONDAY IN MARCH

OKLAHOMA



2211 S. 29th Co. Rd.

Blackwell, OK 74631

Melvin Young
Herdsmen
580-761-9257

Nancy Bowling
580-362-5026
nkbowling@yahoo.com

DAY HEREFORDS

Hazlett-Turner Ranch Bloodlines
Disposition & Thickness Bred

"Located in the heart of the Old Hereford Heaven"
next ranch north of the famed former Turner Ranch on Hwy 1

Mr. & Mrs. Richard C. Day & Family
3284 St Hwy 1 W • Roff, OK 74865
580-456-7567

**Lents
Anxiety 4th Herefords**

Thick, substantive & efficient!

J.H. "Jim" Lents

25398 SW Coombs Rd
Indianapolis, OK 73552

Home 580-246-3560

Cell 580-704-3560
jhlents@sirinet.net



(continued from page 1)

thing is for sure, you didn't waste any time looking through the cattle.

This winter weather pattern brought some much-needed moisture in the form of snow to a large drought-stricken area of Montana, Wyoming, Nebraska and the Dakotas. Even though it was cold it improved the attitudes of people who have been wondering when the drought would break. I think it made a difference in the sale averages in mid to late February. At our place here we've had over a foot of snow so maybe the dry weather pattern is broken. At least the rattlesnakes are froze up for the time being.

Bull sale season, while grueling in terms of travel, is interesting. I enjoy seeing the cattle and people. It's just as much a people business as a cattle business. It's never a dull moment at these sales and so gratifying to see what each breeder has on offer for the year. Each one is different.

If it's not the weather people are talking about, hay price and availability and trucking prices certainly run a close second and third. With widespread drought conditions plus winter weather on top of it, winter feed becomes a huge issue in this area and is critical to livestock survival as well as ranch family survival.

Well, looks like I'm out of time and out of space. Till next time!

— JBH

(continued from page 30)

MN was June Dunn, who has since joined Greater Omaha as a field specialist and is now able to share her passion and knowledge of Greater Omaha's Hereford Beef with many customers in other parts of the country.

John knew he had to reinvent himself and The Lake Elmo Inn needed to become a steakhouse. He and his wife Chris, the catering manager of The Lake Elmo Event Center, updated the interior, added new windows and furnishings to freshen the look of the Inn. A new menu and a new line of beef was to be the next critical decision. The 1881 Hereford product had John intrigued. Could returning to a Heritage breed be the answer?

He and his chef joined the Sysco team on a trip to Omaha to tour the Greater Omaha Packing plant and meet some area producers. John stated, "Everything impressed me from the care of the animals to the cleanliness of the plant."

John stated, "While on the grading floor, I talked to the inspector on the line and asked questions as to why the 1881 beef was so special." That grader explained all the quality specifications that need to be met to get into the program, from the weight of the carcass to the marbling score, all of which greatly impressed him. John said, "My chef and

I wrote a new menu in the car on the way back to Lake Elmo."

They reopened the Inn using "1881" and Classic Hereford. The Inn has an older clientele and they said, "This is what beef used to taste like!"

A few years later John was presented the Minnesota Beef Backer Award, given out by the Minnesota Beef Council each year to a restaurant that uses beef throughout their menu.

John believes the new beef has improved his business. "After 28 years my sales had started to decline. Once I

changed to Hereford we have seen about a 20% increase in sales."

John learned a great deal from his experiences in the last 34 years. One of the most important things was to return to his roots and to live out his dream at The Lake Elmo Inn. Having a Chef and Restaurant owner like John feature Hereford beef is truly a prestige, and the Lake Elmo Inn consistently delivers Minnesota's most elite dining experiences. Greater Omaha is honored to be partners with John in marketing Hereford beef and to be part of a story in the making since 1881.



Take a look inside the beautiful dining room and the next time you are in the Lake Elmo area, stop in for a great steak.

NORTH DAKOTA

Behm Polled Herefords

Larry, Aneica,
Lindsey, Nicole and Logan Behm
5944 Hwy. 1806
Beulah, ND 58523
701-873-2646
e-mail: albehm@westriv.com



BOEHNKE HEREFORD RANCH

Registered Herefords Since 1946

Unpampered • Functional • Sound
Cattle for Sale at All Times

8424 4th Ave N.E.
Kramer, ND 58748
Jeff 701-359-4450 • Jared 701-201-0445
e-mail: jboehnke@utma.com

CARTER'S / PENNER POLLED HEREFORDS / LAND & CATTLE



Annual Bull Sale
at the farm in Rocklake, ND
1st Saturday in February

Jimmy Carter P.O. Box 55
Rocklake, ND 58365
701-266-5575
Jay & Malynda Penner
28074 440th Ave
Freeman, SD 57029
605-929-7314
mrs.penner@hotmail.com

DIAMOND R HEREFORDS

Randy & Julie Lemm Family
623 166th Ave. SE
Hillsboro, ND 58045
(701) 636-5465
rdlemm@yahoo.com

Merlin & Eunice Fornes

Quality grass-raised
Polled Herefords



12169 56th St. SE
Kathryn, ND 58049
(701) 924-8360

FRIEDT HEREFORDS

Production Sale Feb. 13, 2019
& Private Treaty

Gary, Kirsten & Aaron
8733 55th St. SW • Mott, ND 58646
701/824-2300 • Gary's cell: 701/290-7231
Megan & Dusty Dukart 701/290-7230
Lindsey & Drew Courtney
E-mail: gfriedt@hotmail.com
Website: www.friedtherefords.com

HELBLING HEREFORDS

Registered and commercial.
Bulls and females for sale any time.
— Private Treaty —

4785 Co. Rd. 83 • Mandan, ND 58554

Jim 701-663-7123 Fred 701-663-0137 Wayne 701-471-4391

E-mail: helbling95@msn.com

HUSO & SONS HEREFORDS

Bred For Better Beef™

Jim Huso
701.326.4278 or 701.326.4176 (evenings)
11922 17th St. NE Aneta, ND 58212
www.husoandsons.com

MIDWAY POLLED HEREFORDS

7480 26th St.
Sheyenne, ND 58374

Doug & Ann: 701/996-3111
Bill, Karen, Katie & Whitney:
701/996-3300
midwayph@gondtc.com
Herdsman: Jake Burkhardtsmeier

Visitors Always Welcome

MRNAK HEREFORD RANCH

ANNUAL SALE Feb. 10, 2019 SALE IN BOWMAN, ND

14503 91st St. SW • Bowman, ND 58623
Marlene 701/574-3124
Wayne, Jill & Robyn 701/574-3172
Terry & Andy 701/574-3193
Brent & Jenna 701-206-0604

www.mrnakherefords.com

NORTH DAKOTA HEREFORD ASSN.

Joana Friesz
Sec/Treas.



PO Box 67
New Salem, ND 58563
701/843-8750 • 701/400-8744 cell
701/843-8744 work
joana@northlandinsuranceagency.com

OLSON Hereford Ranch

Carl, Lindsay, Casey, Dru & Stetson Olson
16068 24th St SE • Argusville, ND 58005
ranch: 701/484-5779 • cell: 701/361-0684
Ed & Jeanne Olson • 701/238-3601

Red Power Bull Sale - Feb. 21, 2019
www.olsonredpower.com
E-mail: olsoncandc@aol.com

PELTON POLLED HEREFORDS



We produce Polled Herefords
for the Commercial Cowman

Craig 40 93rd Ave. NW
Kayla & Kain Halliday, ND 58636
cell: 701-260-0058 • 701-548-8243
craigp@ndgateway.com

North Star Classic Hereford Show & Sale

December 2018
Valley City, ND

Plus NDHA Annual Meeting and Banquet

Contact Joana Friesz for more info.:
701/843-8750 • 701/400-8744 cell
701/843-8744 work
joana@northlandinsuranceagency.com

Stroh HEREFORD RANCH



Over 50 years of Registered Herefords
TONY & MIKE STROH

10550 Hwy. 200 Killdeer, ND 58640
701/764-5217 701/573-4373

Annual Sale Feb. 7, 2019

Winter Ranch

Quality Polled Hereford Cattle
1990 10th St. NE
Goodrich, ND 58444

Jason & Linda • 701-884-2424
Kevin & Julie Bender • 701-884-2417



Visitors Always Welcome
Stop Anytime

SOUTH DAKOTA

... more South Dakota on next page

Jim BAKER

HEREFORD RANCH
 P.O. Box 2769 • Rapid City, SD 57709
BULL SALE: Feb. 9, 2019
 Jim 605/923-2925 • 381-9519 cell
 E-mail: jbakereherefords@gmail.com
 www.bakereherefords.com

JZ Bar JZ Ranches
 Homozygous Polled Herefords
 Homozygous Polled Limousin
 18542 326th Ave.
 Holabird, SD 57540
Annual Production Sale
Tuesday, Feb. 19, 2019
Don/Peg/Seth Zilverberg
605/852-2966
 web site: www.barjz.com
 email: cattle@barjz.com

DVORAK HEREFORDS

LAKE ANDES, SD
 Richard & Darlene
 Jeff & Tiphany 605/384-3914 Cell: 491-2068
 Boyd & Jenni 605/487-7090 Cell: 491-7090

EGGERS Southview Farm
 Tim & Philip Eggers
 25748 S. 476th Ave.
 Sioux Falls, SD 57104
 (605) 351-5438
 ESFherefords@aol.com
1-29 Bull Run
 Bull Sale March 10, 2018
 Female & Frozen Edition Sept. 2017

FAWCETT'S ELM CREEK RANCH
 21115 344th Ave. • Ree Heights, SD 57371
 Robert Fawcett
 Keith, Cheryl, Matt & Erin: 605/870-0161
 Daniel & Family: 605/870-6172
 Weston & Kristin Kusser: 605/478-0077
 www.fawcettselmcreekranch.com
Bull & Female Sale • February 11, 2019

FINK

 Mike Fink
 P.O. Box 184 • 43610 SD Hwy 42
 Bridgewater, SD 57319
 Phone: (605) 729-2515
 Cell Phone: (605) 999-2075
 www.sites.google.com/site/finkpolledherefords
 E-mail: swamprat@unitelsd.com

FREDERICKSON RANCH

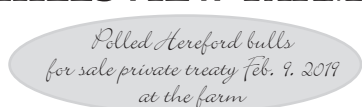
Pyramid Beef Bull Sale
 First Saturday in December at the ranch
 Mark & Mary Kay
 Frederickson
 19975 Bear Ridge Rd.
 Spearfish, SD 57783
 605/642-2139
 320/808-6691 (cell)
 Nate & Jayna
 Frederickson
 605/254-4872 (cell)
 Shawn & Sarah
 Tatman
 307/673-4381

Gant Polled Herefords

 Box 15 • Geddes, South Dakota
Mark • Phone (605) 337-2340
Dennis • Phone (605) 337-2564
 2 year-old Angus & Polled Hereford
BULL SALE
February 22, 2019
 Geddes, SD


Hanson's Polled Herefords

 Sherry Hanson
 15477 409th Ave.
 Conde, SD 57434
 Cell: 605-382-7477
 hanson_herefords@hotmail.com

HILLSVIEW FARMS

 Polled Hereford bulls
 for sale private treaty Feb. 9, 2019
 at the farm
 Darwin & Cindy Aman
 Andrew — Sam — Alex
 32824 119th St. • Eureka, SD 57437
 (605) 284-2721
 dcaman@valleytel.net

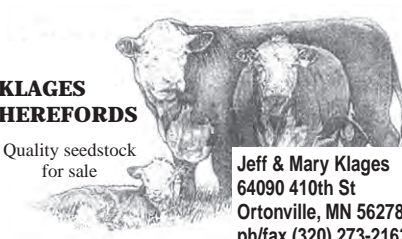
Hoffman HEREFORDS

 Colin & Mary Beth Hoffman
 (605) 439-3623
11341 357 Ave.
Leola, SD 57456-7105
 Visit our website at
 www.hoffmanherefords.com

HORA HEREFORDS

 Suppliers of Show Cattle
 Steers & Heifers
 Jim & Karla Hora
 27718 423rd Ave. • Parkston, SD 57366
 (605) 928-3008 • Cell (605) 770-3008
 E-mail: jhora@santel.net

Ad deadline for the April/May issue of Hereford America is March 5.

K&B HEREFORDS & ANGUS
 17309 322nd Ave.
 Onida, SD 57564
 E-mail: kbherefords@venturecomm.net
 Kirk: 605-973-2351 Cell: 769-9991
 Brooke: 605-765-2248 Cell: 769-9992
 Ken & Bonnie: 605-765-2335 Cell: 769-9999

KLAGES HEREFORDS

 Quality seedstock for sale
 Jeff & Mary Klages
 64090 410th St
 Ortonville, MN 56278
 ph/fax (320) 273-2163
 jmkklages@fedtelnet.net

Jerry Knippling and Sons
 Registered and Commercial Herefords
Internet bull sale on KnipplingCattle.com
 Gann Valley, SD 57341
 Randy 605/680-3185
 Garin 605/680-4637

LEDDY
 Horned • Polled
HEREFORDS and ANGUS
 Using the Best A.I. Sires Available.
 Bulls, Females and Club Calves For Sale.
 GENE 605/432-5182
 Cell: 605/530-1659
 WADE & LORI REBECCA & ALLISON
 605/432-9054
 Cell: 949-0630
 47296 153rd Street • Twin Brooks, SD 57269
 — Complete Dispersion September 30 —
 e-mail: willedy@tnics.com

Nuhsbaumer Herefords
 Steve, Amy & Casey
 Zell, SD
 (605) 450-0550
 Bulls for sale private treaty...
 please call for more information.
 www.nuhsbaumerherefords.com
 Visitors Welcome e-mail: sanuhs@nrctv.com
 Directions: from Zell, 3 m. West on Hwy 212, 5 1/2 South

OLLERICH BROTHERS HEREFORDS
 Over 45 years in the Registered Hereford Business
 29188 303rd Ave
 Clearfield, SD 57580
 (605) 557-3246
 www.ollerichbrothersherefords.com
Bulls For Sale Privately
JEROME JAMES

Home Raised First Cross Black Baldy Replacement Heifer Calves

Top End Sell at Philip Livestock Auction the end of April
 Bill Parsons
 19955 228th Ave.
 Milesville, SD 57553
 605-544-3247

RCR Polled Herefords

 — Visitors Always Welcome —
 James & Bonnie
 Lake Andes, SD • James 605/481-1936
 Michael & Wendy
 Andrew • Tim • Nick • Makayla
 Colton, SD • Michael 605/351-5123
 Tim 605/481-8498 • Nick 605/553-6050

RAUSCH HEREFORDS
 Hoven, SD 57450
 Visitors Welcome
• Sale Third Mon. in February •
 Vern • Jerry • Shannon • Joel
Phone 1-800-6HEREFORD or 605/948-2146
 2 miles west of Hoven on Hwy. 20
 e-mail: rauschherf@rauschherefords.com
 Website: www.RauschHerefords.com

Ravine Creek Ranch

 The Bischoffs
 Huron, SD 57350
SALE MARCH 3, 2018
• 605/352-5530 •
 E-mail: ravinecr@santel.net

Schuetz Land & Cattle Co., Inc.

 Raising quality commercial Hereford cattle for over 60 years.
 Jim & Judy Schuetz 605-852-2789
 Jerry & Kathy Schuetz 605-852-2046
 PO Box 266 slc@venturecomm.net
 Highmore, SD 57345 www.slc-herefords.com

Simon Herefords
 Low maintenance, feed efficient Hereford cattle
 Brian & Colleen Simon
 Seneca, SD 57473
 Home: 605/436-6725
 Cell: 605/765-4564
 bcsimon@venturecomm.net
 www.simonherefords.com
Selling bulls & heifers private treaty.

South Dakota Hereford Association

 Mark and Jeanne Johnson, managers
 South Dakota Hereford Association
 46473 289th St.
 Centerville, SD 57014
 Jeanne.Johnson@yahoo.com
 www.southdakotaherefords.org

CONGRATULATIONS 70th to 70th South Dakota Hereford Association
 on its 70th Annual Hereford Directory

THORSON HEREFORDS

0 22
 Doug and Nancy Thorson
 22750 Cottonwood Road
 Quinn, SD 57775
 605-859-3538
 we02much@gwtc.net
 www.thorsonherefords.com
Visitors welcome at the Ranch

... continued

SOUTH DAKOTA

Tricky's Herefords

Dick & Betty Wettlaufer
(605) 485-2648 • Cell: (605) 270-3465
44132 234th St. • Winfred, SD 57076-7318

E-mail: rwettlaufer@triotel.net
www.TrickysHerefords.com

BULL SALE • March 10, 2018 • Madison, SD

Wagner Herefords

Reese & Elly Jo Wagner
39365 182nd St.
Redfield, SD 57469
Reese 605-450-1085
Elly Jo 605-450-9790
wagnerherefords.com

Bull Sale • Monday, March 19, 2018

POLLED HEREFORDS

Since 1947

Bulls and Heifers for sale at the farm

DEL & RUTH WOOD
WOODCREST FARMS
Cresbard, SD 57435
(605) 324-3289

ZENS HEREFORDS

*Bulls, Heifers and Show Steers
Private Treaty Sales*

Harley, Matt & Mark Zens
Canova, SD 57321

Phone (605) 523-2655
Matt (605) 310-5782 cell
hrzens@yahoo.com
www.zensherefords.com

SERVICES

A2Z PRINTING

PO Box 35 701-523-4656
306 Hwy 12 W Ste C 888-768-4656
Bowman, ND 58623 Fax 701-523-4756
email: a2zprint@ndsupernet.com

American Live Stock
A MARKEL Insurance Company

Cheri & Jim Gies
Cattle and Equine Insurance

19381 CR 74
Eaton, CO 80651
Tel/Fax (970) 454-3836
Cell (970) 590-0500
cmgies@msn.com



All work done by Cattlemen for Cattlemen



**Cattlemen's
Livestock Services**

Fence building and repair.
Corral building, pasture clearing, bulldozer,
backhoe services, livestock care, water lines
installed and barn building.
Pomona, KS
785-214-9532

El Molino Sawmill



P.O. Box 1106
Alto, NM 88312
Phone: 575/336-1237 • Cell: 575/808-0860
Email: elmolino@valornet.com
www.elmolinosawmill.com

BEN ROUDABUSH Ph. 605-996-9100
Manager Fax 605-995-0611
broudabush@crinet.com

Genex



Dakota Sire Service

Semen Collection, Freezing, Shipping,
Storage, Sire Housing & Conditioning
40275 - 257th Street Mitchell, SD 57301

HANDEL MARKETING, LLC

Private Treaty Sales ♦ Ring Service ♦ Insurance

Order Buying and Selling Commercial &
Registered Breeding Stock & Feeder Cattle

Art & Pat Handel
handelhereford@aol.com
www.arthandelsattle.com

605/391-8233
1501 Summit Blvd.
Rapid City, SD 57701

HIGH PLAINS GENETICS, LLC



For All Your
Equine & Bovine
Reproductive Needs



(605) 787-4808

www.high-plainsgenetics.com

HEREFORD America

www.HerefordAmerica.com

For more information contact:

Jill Hotchkiss at 605/866-4495 • jbh@herefordamerica.com

- 7 Issues per year**
- Covering Hereford breeders throughout North America
 - Advertising deadlines are the 5th of the preceding month



Steer In Trailer Sales



New & Used
Stock & Horse Trailers
Flatbeds - Mats
Cargo Trailers

Located at I-90 and Hwy. 287

(406) 285-4300
29 Bronco Drive
Three Forks, MT 59752 Fax: (406) 285-4146
www.steerin.com 1-877-335-5372

TEXAS

Barber Ranch

Barber Ranch 806-235-3692
Justin Barber 806-681-5528
Brett Barber 806-681-2457
Terri Barber 817-727-6107
Jason Barber 817-718-5821
Dale Barber 806-673-1965
Mary Barber 806-930-6917

10175 F.M. 3138 • Channing, TX 79018
barberranch@wildblue.net • www.barberranch.com

Sale Date: **Nov. 10, 2018**
noon • Circle M, Grand Saline, Texas



For more information contact:
Dimitri Mataragas
214-649-0071 cell
David Caraway
903-802-3373 cell
P.O. Box 751 • 8027 F.M. 1616,
Athens, TX 75751

www.ironlakeranch.com

PPHF

"Prefix of Performance"

PRAUSE POLLED HEREFORD FARMS

1957 Morris Community Rd.
Yoakum, TX 77995-5224

www.prausepolledherefords.com

**Leslie & Gay
Prause**

361-741-6495
361-293-4213

**Robert, Lorna
& Kaci Herman**

361-293-5324
361-293-1533

Still River Ranch

**Better Calving Ease
Better WW/YW
Better Marbling**

Larry Woodson
214-491-7017
larrywoodson@gmail.com
www.stillriverranch.com



TRIPLE L RANCH

BOBBY & JARED LIDE
714 FM 1366 • MEXIA, TX 76667
(P) 254.739.2911 • (CELL) 254.625.3800
JARED (CELL) 254.625.3806

www.triplelblackherefords.com

DOUBLE DIAMOND RANCH

Continuing the tradition

WHITEHEAD HEREFORDS

Proven Bloodlines...Predictable Results!
www.whiteheadherefords.com

Wendee Whitehead
512-970-1595
McDade, Texas central
Rusk, Texas East
email: drwendee@yahoo.com



UTAH

Ekker Herefords

Jim Ekker 435/839-3454 Cell # 435/840-2699



1004 Ekker Lane • Vernon, UT 84080
~ Bulls & Females for Sale ~

**Breeding Quality
Herefords Since 1985**

*Line One
performance bred Herefords*
www.johansenherefords.com

Castle Dale, UT
Jonathan 435-650-8466
Craig 435-820-8490



CX Ranch

Bill and Terrilie Cox
688 Pataha St.
Pomeroy, WA 99347

509-566-7050 cell
cxranch@live.com

Dick & Karen Yoder
8941 Glendale Rd.
Custer, WA 98240
(360) 354-2945

Dale & Tammy Yoder
Katie & Clark
9279 Weidkamp Road
Lynden, WA 98264
(360) 354-6605

**Yoricka
Farm, Inc.**
Registered Herefords

email: YorickaFm@aol.com

WISCONSIN



**KEVIN L. STORK
KODY L. STORK**
626 EAST THIRD
NEW RICHMOND, WI 54017

(715) 381-3770 Kevin
(715) 220-0021 Kody
(715) 246-2580 fax

E-mail: kstork@presenter.com

LIETZAU HEREFORD FARM

Harold & Connie Lietzau
Tammy, Dan, Kiara & Austin
Troy, Michelle, Jaydon, Devon & Jocelyn
Taylor & Ty
7477 Iband Ave. • Sparta, WI 54656
Cell 608/633-2875



MARVIN ESPENSCHIED FAMILY

(608) 543-3778 12044 State Hwy 78
Fax: (608) 543-3824 Argyle, WI 53504
Email: osf@mhtc.net

Thanks to our customers!

WIRTH Herefords

NEW RICHMOND, WI

Gene & Cheryl Wirth
(715) 247-5217

Lance Brent
(715) 377-6876 (715) 760-1727
www.wirthshowcattle.com

HEREFORD America

www.HerefordAmerica.com

7 Issues Per Year
• September through April •

For more information contact
Jill Hotchkiss at 605/866-4495
jill@herefordamerica.com

WYOMING

The Berry's

WHERE
COWMEN
BUY BULLS

Bull Sale October 15, 2018

Jay and Janice Berry
3049 County Road 225
Cheyenne, WY 82009
(307) 634-5178

E-mail: jaberryherefords@msn.com
www.WhereCowmenBuyBulls.com



**LARGENT
and SONS**
Hereford Cattle
Since 1902

• Sale November 15, 2018 •

P.O. Box 66 • Kaycee, WY 82639
(307) 738-2443 or (307) 267-3229
www.largentandsons.com
largentandsons@yahoo.com

McClun's Lazy JM Ranch

Producing problem free
Polled Herefords and Angus.

Sale April 12, 2018

Private treaty sales any time.

Jim & Jerri McClun
1929 Road 60 • Veteran, WY 82243
Ph. 307-837-2524

Jeff & Kari McClun
1930 Road 60 • Veteran, WY 82243
Ph. 307-837-2554 • jkmcclun@wyomail.com

MIDDLESWARTH RANCH

Registered Herefords
• Torrington, WY •

Jay, Marsha and Jessica
307.532.5427

6MBulls@hughes.net
www.middleswarthherefords.com

GEORGE OCHSNER RANCH INC.
PRIVATE TREATY SALES OF
HEREFORD AND ANGUS BULLS
REGISTERED AND COMMERCIAL BRED HEIFERS
QUALITYBULLS.COM

GEORGE & RUBY OCHSNER
307/532-5892

E-MAIL: OCHSNERRANCH@GMAIL.COM

Blake & Rustin & Steve & Rod & Debbie
Chrissy Britte Roth Dixie Roth Ochsner
Ochsner 307/575-2709 307/532-7191 307/532-2457
307/532-3282

The Livestock Link

Livestock Videoing • Video Sales
• Bid-by-Click Online Sales

605/490-1513
605/210-1956

STICKS & STONES RANCH

• Gene & Cindy Stillahn and Family •
Christopher, Amy and Trey

3902 County Road 203
Cheyenne, WY 82007
(307) 635-6716 • cell (307) 421-1592
E-mail: gcstick@millec.com

THE NED & JAN WARD QUALITY PROGRAM

...honest, efficient and predictable Polled Herefords.

Ned, Jan & Bell Ward
247A Decker Road • Sheridan, WY 82801
Phone and Fax 307/672-3248
Ned (c) 307/751-8298 • Jan (c) 307/751-9470
Email: njwardherefords@gmail.com
www.NJWHerefords.com
Annual BULL SALE in March
Bulls • Females • Semen • Embryos

S.E. West & Sons

• Herefords since 1949 •

Selling Private Treaty and at
Black Hills Stock Show
Nebraska Cattleman's Classic
Bulls & Females • Club Calves

Lusk, Wyoming
Brett 307/334-2546



Joel & Karri White

912 Fullerton Avenue
Buffalo, WY 82834
C: 307.217.0367 H: 307.684-7881
whitecattlecompany@gmail.com

Bulls, Females, Embryos & Semen
Available



**Starts the
second Saturday
of August
every year.**

307/358-2398

wystatefair.com

wsf@netcommander.com

(Supported by Converse County Tourism.com)

NO NEED TO LOOK BACK



oleenbrothers.com

Production Sale - Dwight, KS: March 26, 2018

65 - Horned Hereford Bulls

60 - Black Angus Bulls

60 - BWF Heifers w/ calves

20 - Hereford Heifers w/ calves

80 - Fall Bred Heifers (HH, Angus, & BWF)

25 - AQHA Colts & 5 Riders



Arden: (785) 466-1422

Jan: (785) 482-3383

Jesse: (785) 499-3250

P.O. Box 8



**BULLS IN MIRROR ARE
AS RELIABLE AS THEY APPEAR**

