

**The Largest Privately Owned Hereford Newspaper in North America**

The one that's read "from cover to cover." • Visit us on the web at: [www.herefordamerica.com](http://www.herefordamerica.com)

*Serving Commercial Cattlemen & Registered Hereford Breeders*

Vol. 21., No. 3

Published by: Hereford America, Inc. • 13823 Beaver Creek Place • Reva, SD 57651

November/December 2017

## Editorial Comments...

*Jill Bayers Hotchkiss*



*Jill Hotchkiss*

This issue celebrates two historic Hereford ranches, Schafer Ranch in Minnesota and Van Newkirk Herefords in Nebraska. They both held anniversary celebrations this summer and fall. This is quite a milestone especially in the registered cattle business. For a family to be dedicated to one breed of cattle for that length of time is incredible. Think of what the families have endured from the 1890s to early 1900s and all the years on up to 2017. There have been a lot of changes in the cattle business in the just last 10 years, I can hardly imagine what

*(continued on page 28)*

*Byron Bayers*



*Byron Bayers*

Most of us have heard about Greater Omaha for years and most of the cattle breeders in the purebred business are fully aware that Greater Omaha has been the leader in handling our Certified Hereford Beef® product. Probably, very few of you know very much about the owner and Chief Operation officer of Greater Omaha. I am among that group who knew very little about Greater Omaha other than about the people, that are working for Greater Omaha, and the CHB brand.

In *Forbes* magazine, the issue of October 24, 2017, a great article appeared, called "A Cut Above" written

*(continued on page 28)*

# Van Newkirk Herefords Celebrates 125 Years of Registered Herefords

*125 years in the making...*

John & Lizzy Van Newkirk dismantled their covered wagon, floated it across the North Platte river and "encouraged" their oxen to swim across as they made their way to stake a claim in Garden County, NE in the 1880s.

In 1892, they found a little piece of paradise, not far off the North Platte river outside of Oshkosh, NE, to call home.

125 years and six generations later, the Van Newkirks still call their little piece of paradise home. There have been blizzards, droughts, Longhorns, race horses, sheep, milk cows and Herefords.

In their words, "We've seen lean years, tough times, green years and better times. God has blessed us with incredible neighbors, wonderful landlords, tremendous friends, hardwork-

ing hired men and amazing customers. (many with ranches older than ours). Van Newkirk Hereford Ranch celebrated 125 years Saturday, August

*(continued on page 30)*



*The Van Newkirk family celebrated the ranch's 125th anniversary with family, friends and a horse-drawn wagon tour through the bulls.*  
*Photo by Cathy Wright*

# Schafer Ranch Celebrates 100 Years of Registered Herefords

On September 23rd, Schafer Herefords of Buffalo Lake, MN celebrated 100 years of Hereford genetic progress

Held at the ranch, the event drew approximately 150 people from at least six states. Cattle were on display including bred heifers, cows, and herd bulls with a wagon to take people out into the herd.

In 1900, John and Mary Klucas and their two young sons, Art and Emmett, moved to the ranch from the Blue Earth, MN. Two daughters, Frances and Gladys were born within the next



*Heifers on display at Schafer's 100th anniversary celebration.*

few years to complete the family. In 1917 John and his brother-in-law traveled by train to Garner, IA, where John purchased four registered Hereford heifers.

In 1919 John D. and Dora Schafer with their nine children moved from Sherburn, MN to a farm just south of Buffalo Lake, about three miles west

*(continued on page 32)*

# KNOLL CREST'S TOTAL *Performance* BULL SALE

Friday • **DECEMBER 1, 2017**

*Featuring*  
**170 BULLS**

## Hereford Sale Bulls AVERAGE:

GED	BW	WW	YW	Milk	SC	REA	MARB	BMI	CHB
<b>+5.1</b>	<b>+1.8</b>	<b>+69</b>	<b>+110</b>	<b>+28</b>	<b>+1.4</b>	<b>+0.70</b>	<b>+0.39</b>	<b>+\$29</b>	<b>+\$41</b>
Top 8%	Best 20%	Top 1%	Top 2%	Top 15%	Top 4%	Top 5%	Top 3%	Top 1%	Top 1%



**KCF Bennett  
Encore Z311**  
*Sons and powerful  
maternal brothers sell!*



**KCF Bennett  
Homeward C776**  
*Maternal and full  
brothers sell!*



**KCF Bennett  
Provident B284**  
*His first sons sell!*



**KCF Bennett  
Devout B716**  
*His first sons sell!*

Also selling sons of KCF Bennett Revolution X51,  
EFBEEF TFL U208 Tested X651, Churchill Red Bull 200Z,  
KCF Bennett Summit B261, Hyalite On Target 936, SHF York 19H Y02,  
Churchill Sensation 028X, NJW 73S W18 Hometown 10Y.

**PRIVATE TREATY FEMALES**  
Spring-bred and fall-open heifers now available,  
individually or as a group.



**Every bull selling has  
Genomically Enhanced EPDs.**

Live**Auctions**.TV

James D. Bennett  
(434) 376-7299

Paul S. Bennett  
(434) 941-8245

Dalton G Bennett  
(434) 664-7946



Jim G. Bennett  
(434) 664-7935

Brian R. Bennett  
(434) 664-8309

Scott R Bennett  
(434) 660-7268

17659 Red House Road  
Red House, Virginia 23963  
Martha Johnson, Office Manager (434) 376-3567  
Fax (434) 376-7008  
knollcrest@knollcrestfarm.com  
www.knollcrestfarm.com



# Sales & Events CALENDAR

## October

### AHA Events, Kansas City, MO

- 27 AHA Educational Sessions  
6 PM - Awards Ceremony
- 28 AHA Annual Meeting - 9 AM  
Ladies of the Royal Sale - 2  
Jr. Show at the Royal - 5 PM
- 29 American Royal Open  
Hereford Show - 8 AM  
Kansas City, MO

- |   |   |   |   |   |  |
|---|---|---|---|---|--|
| 1 | Brost Land & Cattle Co.<br>Production Sale<br>Irvine, AB      | 2 | Western Nugget National<br>Bull Show and Sale<br>Reno, NV | 7 | Spearfish, SD<br>LCI/Doenz Ranch<br>Bull Sale  |
| 1 | Jamison Herefords<br>Female Sale<br>Quinter, KS               | 2 | The British Connection<br>Bull Sale<br>Lethbridge, AB     | 8 | Warner, AB<br>Minnesota Hereford Assn.<br>Annual Meeting & Banquet<br>Hutchinson, MN |
| 1 | Knoll Crest's Total<br>Performance Bull Sale<br>Red House, VA | 2 | North Star Classic<br>Hereford Sale<br>Valley City, ND    | 9 | Go-Pher the Purple Sale<br>Hutchinson, MN  |
|   |   | 2 | Pyramid Beef Sale   |   | (continued on page 4)  |

## November

- 1 Pride in the Pasture  
Online Sale  
SmartAuctions.co
- 4 Nelson-Hirsche Purebreds  
Del Bonita, AB
- 10 South Dakota Hereford  
Assn. Annual Meeting  
& Banquet  
Brookings, SD
- 11 South Dakota Excellence  
Steer & Heifer Sale  
Brookings, SD
- 11 Iron Lake Ranch Sale  
at Circle M Farms Facility  
Grand Saline, TX
- 13 Mohican West Bull Sale  
Laurel, MT
- 14 Bowling Ranch Hereford and  
Red Angus Production Sale  
Newkirk, OK
- 16 Largent & Sons  
"Run the Table Sale"  
Kaycee, WY
- 18 Fenton Hereford Ranch  
Fall Sale  
Irma, AB
- 18 DaKitch Fall Female Sale  
lowdermanauktionoptions.com
- 18 Nebraska Hereford Assn.  
Annual Meeting  
Grand Island, NE
- 19 Cornhusker Classic  
Show Steer & Heifer Sale  
Grand Island, NE
- 25 College of the Ozarks  
Hereford Production Sale  
Point Lookout, MO
- 28 Bar Pipe Herefords Sale  
Okotoks, AB
- 30 Western Nugget National  
Jr. Hereford Show  
Reno, NV

## "PREDICTABLE PERFORMANCE"

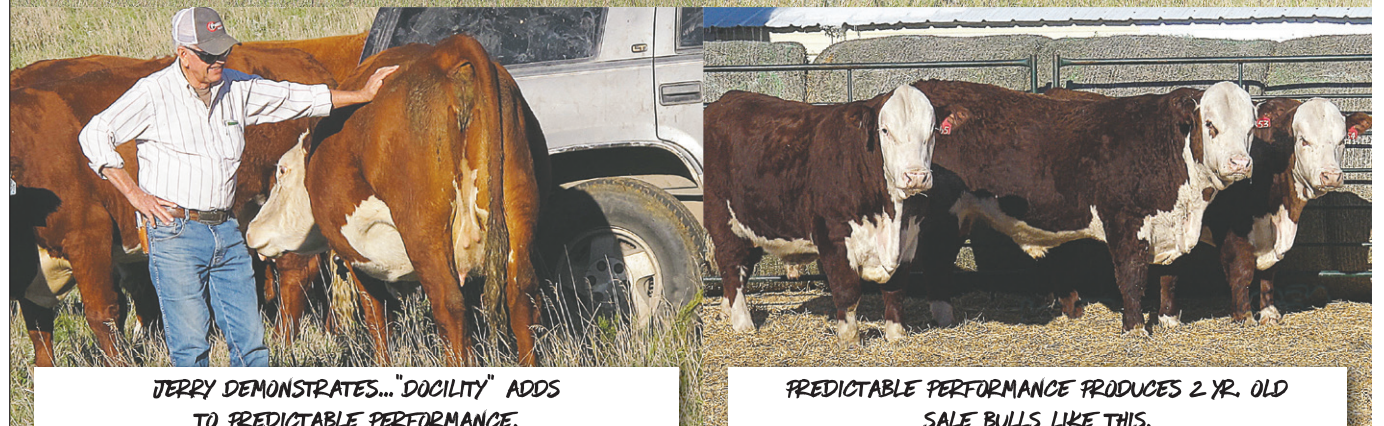
RESULTS FROM OVER 60 YEARS OF WEIGHING EVERY CALF AT WEANING TIME.



KATHRYN AND PETER WILL SOON ROUND  
YOU UP FOR WEANING. I WILL MISS YOU.



WE'RE CANDIDATES  
FOR THE YEARLING  
SALE PENS!



JERRY DEMONSTRATES... "DOCILITY" ADDS  
TO PREDICTABLE PERFORMANCE.

PREDICTABLE PERFORMANCE PRODUCES 2 YR. OLD  
SALE BULLS LIKE THIS.

## RAUSCH HEREFORDS

### 60TH ANNUAL BULL AND FEMALE SALE

150 Bulls and 200 Females from the top of the herd

### 3RD MONDAY IN FEBRUARY 2018

Offering is from the nation's Top Dams of Distinction Herd.  
Volume Selection from top blood lines of both Polled and Horned genetics.

Check out our home page for our marketing programs [www.RauschHerefords.com](http://www.RauschHerefords.com)

E-mail: [rauschherf@rauschherefords.com](mailto:rauschherf@rauschherefords.com)

Please call, write or e-mail for more information:

## RauschHerefords.com

14831 Hereford Road • Hoven, SD 57450

(605) 948-2146 or 2157 or 2375

Jerry Shannon Vern & Joel  
Located 2 miles west of Hoven on Hwy. 20 and 47



America's No. 1 Dams  
of distinction herd.  
(Based on efficiency.)



# Sales & Events CALENDAR

(continued from page 3)

## January

- 10 National Western Stock Show (NWSS)  
Junior Hereford Show  
Denver, CO
- 11 NWSS Bull Show  
Mile High Eve Frozen Genetics Sale  
Denver, CO
- 12 NWSS Carload & Pen Show  
Mile High Night  
National Sale  
Denver, CO
- 13-21 Knippling & Sons Online Bull Sale  
www.TheLivestockLink.com
- 15 Van Newkirk Herefords  
Oshkosh, NE

- 18 River Run Hereford Sale  
Mobridge, SD
- 22 Delaney Herefords Sale  
Lake Benton, MN
- 23 Churchill Cattle Co.  
World Class Bull Sale  
Manhattan, MT
- 25 Sioux Empire Farm Show  
Hereford Show & Sale  
Sioux Falls, SD
- 27 Carswell-Nichols Bull and Female Sale  
Alton, KS
- 27 Melcher Bull Sale  
Page, NE

## February

- 1 Ridder Hereford Ranch  
Production Sale  
Callaway, NE

- 2 Dvorak Herefords Bull Sale  
Lake Andes, SD
- 2 Baumgarten Herefords  
Belfield, ND
- 2 Elkington Polled Herefords  
Production Sale  
Idaho Falls, ID
- 3 Upstream Ranch Sale  
Taylor, NE
- 5 Pelton Polled Herefords  
Halliday, ND
- 9 Topp Polled Herefords  
Grace City, ND
- 10 Baker Herefords & Amdahl  
Hereford/Angus Sale  
Rapid City, SD
- 11 Mrnak Herefords Bull Sale  
Bowman, ND
- 12 BB Cattle Co. Bull Sale  
Connell, WA
- 12 Logterman Family Bull Sale  
Valentine, NE
- 12 Fawcett's Elm Creek Ranch

- 13 Ree Heights, SD  
Thorson Herefords Bull Sale  
Philip, SD
- 14 Friedt Herefords Bull Sale  
Dickinson, ND
- 15 Olson's Red Power Sale  
Argusville, ND
- 15 Lowell Fisher Family  
Production Sale  
Spencer, NE
- 16 Durbin Creek Ranch  
Bull Sale  
Thermopolis, WY
- 16 Hoffman Ranch Bull Sale  
Thedford, NE
- 17 Carmichael Herefords  
Bull Sale  
Meadow, SD
- 19 Rausch Herefords  
Production Sale  
Hoven, SD
- 20 Bar JZ Ranches Bull Sale  
Holabird, SD

## Subscribe Now! DON'T MISS AN ISSUE!

**Canadian & Foreign subscriptions —** \_\_\_\_\_ \$30 U.S. funds, one year  
\_\_\_\_\_ \$55 U.S. funds, two years

**U.S. subscriptions —**  
\_\_\_\_\_ \$20 - one year, third class \_\_\_\_\_ \$35 - two years, third class  
\_\_\_\_\_ \$30 - one year, first class \_\_\_\_\_ \$55 - two years 1st class

(Advertisers placing \$150 or more in advertising for the season will receive a free first class subscription.)

Please let us know if we need to **correct** your address or if your local post office has started using "911 Locator" addresses.

*Note: When submitting an address we need to have 3 lines including a PO Box, Route or Street for the second line. Thanks!*

### Send new or corrected address to:

Hereford America  
13823 Beaver Creek Place  
Reva, SD 57651

### Credit Card Payments

You may pay your subscription or advertising bill online by credit card through our website or by calling us with your credit card information.

Your subscription expiration date is printed above your name on the front page label area. If you wish to receive your paper in a more timely manner or live in a southern state please consider a first class subscription for faster postal delivery.

**For questions call Marc Hotchkiss at 605/866-4495.**  
**If your address changes please be sure to notify us.**

Name \_\_\_\_\_

Address \_\_\_\_\_

City \_\_\_\_\_

State \_\_\_\_\_ Zip \_\_\_\_\_

Phone \_\_\_\_\_ E-mail \_\_\_\_\_

\_\_\_\_\_ Commercial Breeder \_\_\_\_\_ Registered Hereford Breeder \_\_\_\_\_ Polled  
\_\_\_\_\_ Registered Breeder, Other Breed \_\_\_\_\_ Other \_\_\_\_\_ Horned  
\_\_\_\_\_ Both

Signature \_\_\_\_\_ Nov/Dec 2017

(Required for Post Office Regulations)

The official Hereford publication for the states of  
South Dakota, North Dakota, Wyoming & Minnesota.

# HEREFORD AMERICA

## 605/866-4495

**WWW.HEREFORDAMERICA.COM**

Main Office:  
13823 Beaver Creek Place  
Reva, SD 57651

## PUBLISHED 7 TIMES A YEAR: SEPTEMBER-APRIL/MAY

(Nov/Dec is a combined issue)

by Hereford America, Inc., a family owned & operated business.

Jill and Marc Hotchkiss • Byron Bayers • Taylor Vroman

Jill Hotchkiss - jbh@herefordamerica.com • Cell: 605/490-1409

Marc Hotchkiss - marc@herefordamerica.com • Cell: 605/490-1513

Byron Bayers - bayers@3rivers.net

Byron's Phone: 406/684-5465 • Fax: 406/684-5499

Byron Bayers, PO Box 410, Twin Bridges, MT 59754

**Editors:** Jill Hotchkiss, Byron Bayers

**Ad Design/**  
**Production:** Robin Engel, Jill Hotchkiss

**Writers:** Byron Bayers, Jill Hotchkiss, B. Lynn Gordon, Mary Ridder  
Tom Granzow, Courtney Johnson

**Editorial Assistant:** Taylor Vroman

**Proofreaders:** June Hotchkiss, Taylor Vroman

**Website Development:** Robin Engel, Taylor Vroman, Jared Peterson  
Coordinator: Jill Hotchkiss

Opinions expressed by our editors, columnists, letters to the editor or other writers or news sources are not necessarily those of the management. We welcome your comments, ideas, suggestions and letters to the editor. All correspondence (including e-mails) must be signed or must clearly identify the name of the author.

Hereford America shall not be liable for slight changes or typographical errors that lessen the value of an advertisement. Hereford America's liability for errors or omissions in connection with an advertisement is strictly limited to publication of the advertisement in any subsequent issue or the refund of any monies paid for the advertisement. Advertising placed after deadline must be approved by the Editors. All materials for such advertising must be in by date specified by Editor. Late charges may apply. If an ad is placed and all materials are not received by date needed all attempts will be made to compile the ad from available materials. Any cancellations after deadline are subject to full charges for the ad.

Hereford America reserves the right to refuse advertising to anyone.

All contents Copyright 2016 by Hereford America, Inc., except Trademarks and Copyrights otherwise noted in which Hereford America, Inc. disclaims any proprietary interest.



# Sales & Events CALENDAR

(continued from page 4)

- 21 Nebraska Cattlemen's  
Classic Show & Sale  
Kearney, NE
- 21 Shaw Cattle Co. Bull Sale  
Caldwell, ID
- 23 Jamison Hereford Ranch  
Bull Sale  
Quinter, KS
- 23 Gant Polled Herefords  
Bull Sale  
Geddes, SD
- 24 Kreth Herefords Bull Sale  
Mt. Vernon, SD
- 26 Colyer Herefords Bull Sale  
Bruneau, ID

## March

- 1 Calgary Bull Sale  
Calgary, AB
- 1 Jensen Bros. Bull Sale  
Courtland, KS
- 3 Ravine Creek Ranch Sale  
Huron, SD
- 3 McIver's Happy Acres  
Bull Sale/Open House  
Farwell, MN
- 5 Harrell Cattle Co.

- 6 Bull Sale  
Baker City, OR
- 6 S&S Polled Herefords  
Bull Sale  
Guide Rock, NE
- 7 L Bar W Cattle Co.  
Production Sale  
Absarokee, MT
- 10 Ft. Keogh Line One Sale  
Miles City, MT
- 10 1-29 Bull Run  
Sioux Falls, SD
- 12 Tegtmeier Polled Herefords  
Production Sale  
Burchard, NE
- 12 Holden Herefords  
Bull Sale  
Valier, MT
- 13 Cooper Hereford Ranch  
Bull Sale  
Willow Creek, MT
- 14 Vin-Mar Cattle Co.  
Bull Sale  
Rushville, NE
- 15 Englehaupt/Tucker  
Bull Sale  
Butte, NE
- 16 Starmak Cattle Co.  
Bull Sale

- 19 Tea, SD
- 19 B&D Herefords Bull Sale  
Claflin, KS
- 19 Wagner Herefords Bull Sale  
Redfield, SD
- 24 Sandhill Farms Bull Sale  
Haviland, KS
- 26 Oleen Bros. Bull Sale  
Dwight, KS
- 27 Frenzen Polled Herefords  
Bull Sale  
Fullerton, NE
- 31 DaKitch Hereford Farms  
Production Sale  
Ada, MN

## April

- 13 Bartling Herefords  
Production Sale  
Burke, SD
- 14 Knoll Crest Farms  
Spring Bull Sale  
Red House, VA
- 14 Thorstenson Herefords  
Production Sale  
Selby, SD
- 20 Morgan Ranch Bull Sale  
Burwell, NE

- 21 Stuber Ranch  
Production Sale  
Bowman, ND

## Advertisers Index

Alexander Farm	14
Beery Land & Livestock	17
Bowling Herefords	14
British Connection	9
Brost Land & Cattle	10
Cornhusker Classic	16
DaKitch Farms	15
Doenz Ranches	11
Eggers Southview Farms	12
Feddes Herefords	5
Fenton Hereford Ranch	19
Fisher, Lowell Fisher Family	20
Friedt Herefords	7
Gibson Herefords	31
GoPher the Purple Sale	18
Greater Omaha	27
Hereford America	29
Jamison Ranch	33
Knippling Bros.	22
Knoll Crest Farms	2
L Bar W Cattle Co.	26
LCI/Doenz Ranches	11
Largent & Sons	23
Longwood Herefords	24
Melcher Herefords	18
Mohican West Bull Sale	21
North Star Classic	6
Pyramid Beef	44
Ravine Creek	12
Rausch Herefords	3
Rick Rausch	24
Ridder Herefords	25
River Run Sale (Casey Perman)	8
SD Excellence Sale	13
SD Hereford Directory	30
The Livestock Link	34

# Easy Calving ♦ Extra Carcass



BW 0.5  
WW 59  
YW 95  
M 41  
M+G 71  
REA .33  
Marb .25

## F 215Z Domino 721 BW 74

Mass, muscle, maternal. Twelve 215Z sons for sale.



BW 1.8  
WW 62  
YW 91  
M 26  
M+G 57  
REA .31  
Marb .19

## F York 660 BW 80

Meaty and balanced. Five coming two-year-olds for sale.



BW 1.5  
WW 57  
YW 98  
M 31  
M+G 59  
REA .48  
Marb .27

## F Anodyne 725 BW 78

**For Sale Privately**  
**80 Bulls**  
**20 Bred Females**  
**Feddes Herefords**

Tim 406.570.4771 Dan 406.570.1602  
tfeddes@msn.com drfeddes@msn.com  
2009 Churchill Road Manhattan, MT 59741

Our sale is any time you want. All our cattle sell privately.  
See more bulls for sale at:

**www.feddes.com**



BW -0.5  
WW 53  
YW 77  
M 34  
M+G 61  
REA .28  
Marb .02

## F 177R Domino 600 BW 68

# Sale Roundup

**Mohican West  
& Guests Female Sale  
Sept. 28, 2017  
Laurel, MT**

**Auctioneer: Dale Stith**

**62 Females — \$4,663  
1 Bull — \$16,000  
63 Total Lots — \$4,846**

## Top Lots:

Lot 45, E T719 Precious Z35, 1/31/12 by E Braxton 719, carrying heifer calf by Top Tier, to Hagen Cattle & Hay,

Chewelah, WA, \$25,000.

Lot 44, E ILR 4140 Queen E100, 3/15/17 by ILR H Miles 4140B to Langley Farms, Houston, MS, \$19,000. Lot 7, (Bull), NJW PMH 66X 156T Lux 206A ET 9/22/13 by CMR GVP MR Maternal 156T to Randle Perrin, Abbeville, LA, \$10,000, 1/4 int. and full poss.



Lorren and Pauline Hagen, of Hagen Cattle & Hay, Chewelah, WA purchased the top selling lot in the Mohican sale for \$25,000.



Sale manager Jim Reed (left), Reed Enterprises, Missouri with a humorous opening line on the block at the Mohican Female sale as owner Conard Stitzlein, Glenmont, Ohio, laughs.

Lot 29, TDP Melody 23A, 2/7/13 by TH 133U 719T Upgrade 69X and bred to NJW PMH 66X 156T Lux 206A ET, to ANL Polled Herefords, Steelman, SK, Canada, \$7,500.

Lot 23, Mohican Carmel 403A, 2/3/13 by NJW 73S W18 Hometown 10Y, bred to Lux, sold to Friendly Acres Farms, McMinnville, TN, \$6,750.

**Hoffman Herefords  
Sept. 29, 2017  
Thedford, NE**

**Auctioneers:  
Rick Machado and  
Dustin Layton**

**28 Hereford Bred Heifers —  
\$8,214**

**3 Hereford Donor Cows —  
\$29,166**

**45 Hereford Heifers — \$14,294**

**2 Picks of Flush — \$19,750**

**63 Embryos — \$625**

**52 Semen Pkgs. (10 units) —  
\$1,865**

**8 Semen Pkgs. (5 units) — \$1,391**

**37 Angus Bred Heifers — \$4,646**

**2 Angus Donor Cows — \$25,000**

**12 Angus Heifers — \$14,625**

**1 Angus Pregnancy — \$35,000**

## Top Hereford Lots:

Lot 2, H BL Miss Spice 731, 3/23/17 by UPS Sensation 2296 ET to Harrell Cattle Co., \$52,000.

Lot 1, H FHF Rita 776 ET, 2/23/17 by

HH Advance 4075B ET to Paul Gross, \$49,000.

Lot 23, H VM Mallory 7441 ET, 3/12/207 by UPS Sensation 2296 ET to Dee Lynn Braman, \$44,000.

Lot 128, Hereford Donor Dam bred to LCX Perfecto 11B, FHF 9116 Rita 29Z, 3/13/12 by Pyramid 16W 9116 to GrassLand Herefords, \$42,500.

Lot 9, H BL Fancy 737 ET, 4/19/17, sired by CRR About Time 743 to Triple H Cattle, \$38,000.

Lot 126, Hereford Donor Dam, VIN-MAR Mallory 850, 3/11/08 by Beckley 758P Ontime 934S; sold with a 8/26/17 heifer calf at side, sired by CRR 109 On Point 559 ET. They sold to Dee Lynn Braman, \$36,000.

## Hereford flushmate, full sisters:

Lot 28, H BL Marie 718 ET, 2/15/17, by UPS Sensation 2296 ET out of Rose Marie 1Y79 ET by NJW FHF 9710 Tank 45P; to Rafter L, LLC, \$36,000.

Lot 29, H BL Marie 725 ET, 2/19/17, sired by TFR KU Roll The Dice 1326 out of Rose Marie 1Y79 ET to Tony Jeffs, \$36,000.

Lot 30, H BL Marie 727 ET, 2/21/17, sired by TFR KU Roll The Dice 1326 out of Rose Marie 1Y79 ET, to Ryan Johnson, \$36,000.

## Top Angus Lot:

Lot 54, H Wallace Blackcap 740, 3/10/17 by DDA Ignition 1417 to Herbster Angus, \$72,000.

**NORTH STAR  
CLASSIC**

## North Star Classic Hereford Sale

**Saturday, Dec. 2nd, 2017 • 3 pm**

**ND Winter Show Complex, Valley City, ND**

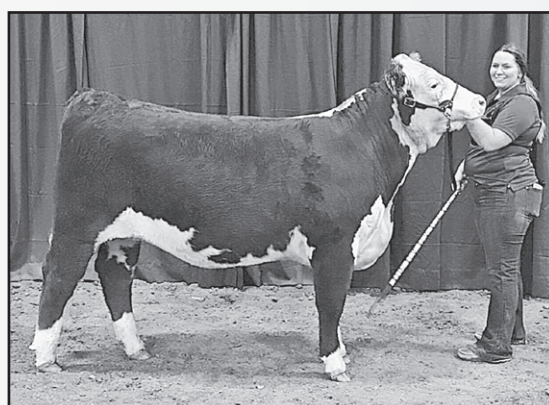
**We will be offering approximately**

**20 Fancy Heifer Calves, Bred Females and Fancy Show Steer Prospects**

**The donation heifer is provided by Olson Hereford Ranch, Argusville, ND.**



The heifer was the donation heifer in last year's sale won by Rylee Lodoen, Westhope, ND and was 2017 ND State Fair Junior Show champion Hereford heifer and reserve heifer in the 2017 NDJHA field day and Champion NSC Comeback Heifer.



2017 ND State Fair Grand Champion FFA Hereford Heifer, Elizabeth Neshem. She was Reserve Champion NSC Comeback Heifer.

For more information or a catalog please contact: Joana Friesz, Sale Manager, 701-400-8744, joana@northlandinsuranceagency.com

This sale will be broadcast live on the internet.

**DVAuction**

**Sale auctioneer:  
Andy Mrnak**

## Open Hereford Show

**Fri., Dec. 1st**

**Annual Meeting - 3:00 pm**

**NSC Cattlemen's Elite Classic  
Banquet and Sale - 7:00 pm**

**Featured Hereford lots  
consigned by Topp Herefords  
and Baumgarten Herefords.**

## NSC Hereford Sale

**Sat., Dec. 2nd - 3:00 pm**

**Annual Banquet - 6:00 pm**

## Jr. Hereford Show

**Sun., Dec. 3rd - 8:00 am**

**Check out website northdakotaherefords.com for updated info.**



A very patriotic greeting to the Hoffman Sale was a welcome reprieve from the flag issues of the NFL that week.

**Colyer Herefords  
16th Annual Fall Female Sale  
Bruneau, Idaho  
October 7, 2017**

**Auctioneers:**  
**C.D. Booker, Dustin Layton,  
Kyle Colyer**

**Cattle sold into 17 states**

- 2 - 1/2 interest donor cows — \$83,750**
- 19 Open Heifer Calves — \$16,987**
- 18 Bred Heifers — \$7,369**
- Pick of the Fall 2017 Calves — \$45,000**
- 111 Embryos — \$873**
- 21 Lots of Semen — \$2,244**

**Top Lots:**

- Lot 2A, C 105Y Lady Domino 4038 to Bowling Herefords, Newkirk, OK, \$97,500 for 1/2 interest.
- Lot 1A, C 88X Notice Me 1311 ET to GKB Cattle Waxahachie, TX \$70,000 for 1/2 interest.
- Lot 3, C Bar 1 Candyland 7014 ET to Glen Barrilleaux, Oakwood, TX, \$55,000.
- Lot 5, C 5280 1311 Lass 7098 ET to GKB, \$45,000.
- Lot 23, Pick of the 2017 Fall Calves to Ground Zero Farms, Watts, OK \$45,000.
- Lot 24, C 88X 5280 Lady 6074 to Knox Brothers Land and Cattle, San Angelo, TX, \$35,000 1/2 interest.
- Lot 9, C 5280 Lass 7025 ET to Robert Spaulding, Villa Ridge IL, \$28,000.
- Lot 7, C 5280 Bailee 7075 ET to Bar One Ranch Eugene, OR, \$24,000.
- Lot 6, C 5280 1311 Lass 7086 ET to Elizabeth Rosson, Milford, TX, \$22,500.
- Lot 17, C 5280 Katies Lass 7184 to Ground Zero, \$17,500.
- Lot 12, C 5280 Katie 7250 ET to Knox Brothers Land and Cattle, \$15,000.
- Lot 13, C 5280 Katie 7279 ET to Knox

Brothers Land and Cattle, \$15,000.

**Top Embryo Lot:**

Lot 46, C Double Your Miles X Pay in Gold 1008X to GKB Cattle, \$6,200.  
Lot 52, Belle Air 6011 X Remitall Graves Juno 204S to GKB, \$6,200.

**Top Semen Lot:**

Lot 75A, 5 Straws of 88X to Ground Zero Farms, \$2,125.

**Leddy Herefords and Red Angus Dispersion**

**Sept. 30, 2017 • Twin Brooks, SD**

**Auctioneer: Chisum Peterson**

- 54 Hereford Cows — \$2,722**
- 13 Bred Hereford Heifers — \$2,500**
- 26 Hereford Heifer Calves — \$1,602**
- 20 Hereford Bull Calves — \$2,230**
- 21 Red Angus Bred Heifers — \$3,476**
- 89 Red Angus Cows — \$3,433**

**44 Red Angus Heifer Calves — \$1,974**

**36 Red Angus Bull Calves — \$2,438**

**4 Crossbred Heifers — \$1,175**

**Top Hereford Cows:**

Lot 139, LH MS Sentry 525, 3/2/15 by H Sentry 2456 ET to Sand Rock Ranch, Benton, WI, \$6,250.  
Lot 164, LH MS Rib Eye 332, 2/22/13 by SHF Rib Eye M326 R117 to Krogstad Polled Herefords, Fertile, MN, \$4,500.

(continued on page 8)



*Selling at the  
North Star Classic*  
**Dec. 2, 2017 • Valley City, ND**

**FH 530 DOMINETTE 724** Reg. 43842332

BW 4.2; WW 65; YW 107; M 27; MG 60; REA .40; MRB .12; CHB\$ 30

A moderate framed, clean fronted female that is very angular in her look. Her maternal line is very strong in our herd.

♦ See Video on our Website ♦

*2018 Sale Bull Preview* – February 14, 2018, Dickinson, ND



**808/727 pair - FH 5019C DOMINO 727 MD** Reg. 43842328

BW 4.5; WW 62; YW 102; M 34; MG 65; REA .38; MRB .29; CHB\$ 35

Sired by HH Advance 5019C ET, one of the top sellers at the Holden 2016 sale. This is a thick made calf with a lot of length and eye appeal. His Harland mother is a top producer.



**FH 53 DOMINO 740** Reg. 43840210

BW 2.3; WW 58; YW 91; M 31; MG 60; REA .26; MRB .19; CHB\$ 30

A solid marked bull calf that is very complete in his structure, he is thick from end to end and has a big rear quarter on him. Sired by our calving ease sire, SR Scope 53A, semen available through Origen.



**FH L1 DOMINO 748 ET** Reg. 43840219

BW 2.6; WW 65; YW 108; M 35; MG 68; REA .23; MRB .31; CHB\$ 35

A well balanced ET son of CL1 Domino 2152 that has a lot of style and natural thickness. We have four full brothers from this flush and they all are good. Their dam, FH Dominette 118, has been bred to 4 different bulls and hasn't missed yet, being the dam of the high selling bulls in our 2015 and 2016 sales.



**FH L1 DOMINO 752 MD** Reg. 43840215

BW 3.5; WW 65; YW 105; M 31; MG 64; REA .26; MRB .28; CHB\$ 35

We own a semen interest in this calf's sire, HS 1147 Advance 417, who was a co-top seller in the 2015 Harrell Hereford Ranch production sale. His dam is a real performance female, having some of the best bulls and females raised on the ranch in her pedigree. He is long and thick with extra eye pigment.



**Where you can buy with confidence!**

**For more information or a catalog contact:**

**Gary, Kirsten and Aaron Friedt • 8733 55th St. S.W., Mott, ND 58646**  
**Megan and Dusty Dukart • Lindsey and Drew Courtney**  
**701-824-2300 • 701-290-7231 Gary • 701-290-7230 Megan**  
**701-590-9597 Aaron**  
**gfriedt@hotmail.com • www.friedtherefords.com**

♦ See Videos on our Website ♦

(continued from page 7)

Lot 142, LH MS Prospector 546, 3/7/15 by FTF Prospector 145Y to Mertens Cattle Co., Milbank, SD, \$4,250.

Lot 157, LH MS Sophie 458, 3/2/14 by Boyd Worldwide 9050 E to Krogstad Polled Herefords, \$4,250.

Lot 141, LH MS Revolution 543, 3/7/15 by MSU TCF Revolution 4R to Mike and Lori Peskey, Iroquois, SD, \$4,000.

Lot 155, LH MS ANGIE 440, 2/27/14 by Boyd Worldwide 9050 E to Bush Herefords, Milford, IA, \$4,000.

Lot 188, LH MS Rib Eye 187, 3/11/11

by SHF Rib Eye M326 R117 to Wagner Herefords, Redfield, SD, \$4,000.

Lot 193, LH MS Vic Boomer 578, 3/13/05 to Dikoff Ranch, Onaka, SD, \$4,000.



Colyer's Lot 2A was a real sale topper at \$97,500 for half interest. C 105Y Lady Domino 4038 sold to Bowling Herefords, Newkirk, OK. She is a January 2014 daughter of CL 1 Domino 105Y out of C 88X Notice Me 1311 ET.



The Evans family enjoyed their time choosing heifers at the Hoffman Ranch Sale, Thedford, NE. Pictured are Hardy, Hardy Malcolm and Kim Edwards from HME Herefords in Winterville, GA.



Troy Rasmussen (left), TSR Herefords, Elkton, SD and Jack Walsh, Walsh Family Herefords, DeGraff, MN at the Hoffman Sale.

#### Top Hereford Bred Heifers:

Lot 124, LH MS Durango 603, 2/17/16 by NJW 98S Durango 44U to Danielle Busselman, Lake Benton, MN, \$3,000.

Lot 129, LH MS Durango 630, 2/25/16 by NJW 98S Durango 44U to Jim Huso, Aneta, ND, \$3,000.

#### Top Hereford Heifer Calves:

Lot 173H, LH MS Leader 761, 3/8/17 by R Leader 6964 to Wagner Herefords, \$3,500.

Lot 164H, LH MS Trust 7139, 3/24/17 by NJW 33TB 100W Trust 167 to Joe Skavdahl, Marsland, NE, \$3,500.

#### Top Hereford Bull Calves:

Lot 188B, LH Leader 7134, 3/23/17 by R Leader 6964 to Wagner Herefords, \$4,000.

Lot 157B, LH DURANGO 786, 3/13/17 by NJW 98S Durango 44U to Blake Sime, Revillo, SD, \$3,750.

#### Top Red Angus Cows:

Lot 48, LRA Ms Gold Rush 412, 2/20/14 by RHRA Gold Rush 402 17T to Mertens Cattle Co., Milbank, SD, \$9,500.

Lot 32, LRA Ms Packer 521, 3/1/15 by Messmer Packer S008 to Jared Namken, Lake Norden, SD, \$5,750.

Lot 29, LRA Ms Peace Maker 512, 2/28/15 by GMRA Peacemaker 1216 to Chance Popham, Hayti, SD, \$5,500.

Lot 47, LRA Ms Makin Hay 410, 2/20/14 by Bieber Makin Hay 9913 to Jared Dick, Menno, SD, \$5,500.

#### Top Red Angus Bred Heifers:

Lot 25, LRA Ms West River 6119, 3/14/16 by LRA West River 010 to Jeremy Reisdorfer, Magnolia, MN, \$8,000.

Lot 19, LRA Ms Epic 689, 3/8/16 by Beckton Epic R397 K to Scott Pederson, Gary, SD, \$5,000.

#### Top Red Angus Heifer Calf:

Lot 81H, RLL Ms Profit Builder 719, 2/26/17 by H2R Profitbuilder B403 to Andrew VanLith, Milbank, SD, \$5,500.

#### Top Red Angus Bull Calf:

Lot 48B, LRA Redemption 728, 3/1/17 by Brown JYJ Redemption to Kurt Potadle, Herman, NE, \$8,750.

# RIVER RUN

## Elite Hereford Sale

### SIRES COMING FROM THE TOP PRODUCING RANCHES IN THE INDUSTRY

## JAN 18 2018

Selling Yearling/2 Yr Old Bulls & Females

### MOBRIDGE LIVESTOCK MARKET

Mobridge, South Dakota

**GENETICS** from Cane Creek Cattle Co,  
Stuwe Herefords, Coffin Butte Ranch

Corey Schafer 701-302-0149  
Casey Perman 605-848-3338

Eric Stuwe 605-228-4030  
Matt Tishmack 701-391-2979

(continued on page 10)

# OVER 90 BIG BUTTED BRITISHER BREED BULLS WITHIN 40 MILES OF THE MONTANA BORDER



## SATURDAY, DECEMBER 2, 2017 1:00 PM

### BALOG AUCTION LETHBRIDGE, ALBERTA

## Featuring 92 Bulls from:

#### BJ Cattle Co.

BJ & Jody Scheirlinck  
(403) 758-3339  
(403) 929-2494  
bjcc@xplornet.ca  
www.bjcattlecompany.com

#### Anderson Ranches

Darryl & Lori Anderson  
(403) 653-1385  
(403) 653-7804  
andersonranchesltd@gmail.com  
www.andersonfamilyherefords.com

#### Newton Herefords

Jim & Terry Newton  
(403) 758-6220  
(403) 308-4123  
jtnewton@xplornet.ca

#### J Bar B Polled Herefords

John & Brenda Lutz  
(403) 642-2363  
(403) 715-1347  
bj.lutz55@gmail.com



**Lot 1 — BJ'S BULLDOZER 703**  
BW: 90 lbs — Adj WW: 982 lbs



**Lot 24 — BJ'S BANKROLL 730**  
BW: 90 lbs — Adj WW: 861 lbs



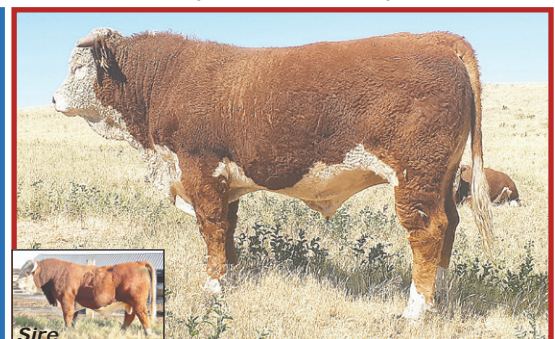
**Lot 29 — BJ'S 56B ADVANCE 1098Y 1D**  
BW: 80 lbs — Adj WW: 885 lbs — Adj YW: 1379 lbs



**Lot 30 — FA SENSATIONAL BRITISHER 18D**  
BW: 86 lbs — Adj WW: 802 lbs — Adj YW: 1200 lbs



**Lot 45 — FA SUNSHINE BRITISHER 99D**  
BW: 96 lbs — Adj WW: 839 lbs — Adj YW: 1293 lbs



**Lot 56 — JEN STD KAP 12D**  
BW: 95 lbs — Adj WW: 679 lbs — Adj YW: 1152 lbs



**Lot 69 — JEN RED KAP 53D**  
BW: 95 lbs — Adj WW: 766 lbs — Adj YW: 1210 lbs



**Lot 81 — J-BAR-B 37C EARL 41E**  
BW: 80 lbs — Adj WW: 739 lbs



**Lot 86 — J-BAR-B 37C EVERETT 59E**  
BW: 92 lbs — Adj WW: 761 lbs

*View the catalogue online*  
at [bjcattlecompany.com](http://bjcattlecompany.com) or [hereford.ca](http://hereford.ca)  
or [www.andersonfamilyherefords.com](http://www.andersonfamilyherefords.com)



\$800.00 US buys approximately \$1000.00 worth of Canadian Bull Power

Internet Bidding Available

**DLMS**  
www.dlms.ca

For more information Call DLMS Reps:  
Mark Shologan 780.699.5082  
Whitney Bosovich 780.991.3025

(continued from page 8)



After nearly 80 years in the registered Hereford business the Ledy family dispersed their Hereford and Red Angus Herds. The ranch is located near Twin Brooks, SD. Quality in this offering was deep and proved a tremendous opportunity to successful bidders.



Auctioneer Chisum Peterson (left) and Wade Ledy on the block.

# when the smoke clears

Join us, **DECEMBER 1<sup>ST</sup>, 2017**, at the ranch for the **49<sup>th</sup> ANNUAL PRODUCTION SALE.**



One of the top lots in the Ledy sale near Twin Brooks, SD.



Lot 191B bull calf in the Ledy offering.



Brooke Bieber, K&B Herefords, Onida, SD at the Hoffman Sale.



Kay Morgan, Burwell, NE at the Hoffman sale.

**18 POLLED BULL CALVES • 25 POLLED & HORNED YEARLING BULLS  
10 PUREBRED HEIFERS • 50 COMMERCIAL BRED HEIFERS**

# BROST

**LAND & CATTLE CO. LTD.**

IRVINE, ALBERTA • [www.brostcattle.com](http://www.brostcattle.com) • e: [bsbrost@gmail.com](mailto:bsbrost@gmail.com)  
f: [www.facebook.com/brostcattle/](http://www.facebook.com/brostcattle/) @brostcattle

Watch & bid online  
**DIMS**  
[www.dims.ca](http://www.dims.ca)

**BLAINE BROST** H: 403.834.2262 C: 403.502.5626 | **GLENN BROST** H: 403.834.2253 C: 403.580.9363



# Annual Production Sale

December 7, 2017 | 1:00pm | The Ranch, Warner, AB  
3.2 KM E of Warner on #504 and 3.2km N on Rg Rd #170

Offering:

- 36** Angus Bull Calves
- 7** Two Year Old Angus Bulls
- 26** Two Year Old Hereford Bulls



He Sells

## LCI 15Z ZAM MAN 212D

Sire: YV 35X ZAM 15Z  
SOD: R 0041 NORTH STAR 40U  
BW: 98 lbs 205 : 781 lbs  
BW WW YW M TM Fat REA Marb  
4.4 60.3 99.2 28.6 58.8 0.056 0.14 0.30



He Sells

## LCI 30Z SILVER 150D

Sire: JEN 195T SILVER 30Z  
SOD: CHURCHILL RAMBO 8116U ET  
BW: 95 lbs 205 : 723 lbs  
BW WW YW M TM Fat REA Marb  
4.8 53.0 83.9 19.3 45.8 -0.014 0.40 0.02



He Sells

## LCI 219B SENSATION SWAGGER 38D

Sire: LCI 028X SENSATION 219B  
SOD: LCI WB CHINOOK 886Y  
BW: 83 lbs 205 : 756 lbs  
BW WW YW M TM Fat REA Marb  
3.3 59.1 89.4 31.6 61.2 -0.007 0.53 0.07



He Sells

## LCI ANODYNE MUSCLE 47D

Sire: GERBER ANODYNE 001A  
SOD: NJW 73S M326 TRUST 100W ET  
BW: 85 lbs 205 : 867 lbs  
BW WW YW M TM Fat REA Marb  
3.5 70.8 121.4 31.4 66.8 -0.054 0.91 0.22



He Sells

## LCI ANODYNE MUSCLE 43D

Sire: GERBER ANODYNE 001A  
SOD: NJW 73S M326 TRUST 100W ET  
BW: 91 lbs 205 : 808 lbs  
BW WW YW M TM Fat REA Marb  
4.4 66.6 128.2 30.0 63.3 -0.033 0.81 0.23



He Sells

## LCI 185A TOTAL MUSCLE 215D

Sire: LCI 311W TOTAL 185A  
SOD: LCI WB RED STANDARD 838U  
BW: 102 lbs 205 : 729 lbs  
BW WW YW M TM Fat REA Marb  
6.7 50.1 94.6 23.1 48.2 0.025 0.16 -0.02

2 Year Old Hereford Bulls Sired By:

**Gerber Anodyne 001A**  
**YV 35X Zam 15Z**  
**LCI 311W Total 185A**  
**LCI 100W Trust 223A**  
**LCI 028X Sensation 219B**  
**JEN 195T Silver 30Z**

Angus Calves Sired By:

**SAV Resource**  
**SAV Radiance**  
**SAV International**



## GERBER ANODYNE 001A

Sire: KCF BENNETT 9126J R294  
SOD: GERBER SQUIRE 627S

BW	WW	YW	M	TM	Fat	REA	Marb
-0.2	60.6	108.4	29.7	60.0	-0.034	0.60	0.44



## YV 35X ZAM 15Z

Sire: YV 710T SUN POWER LAD 35X  
SOD: SNS 109L SILVER STONE 81N

BW	WW	YW	M	TM	Fat	REA	Marb
1.7	55.5	80.7	23.0	50.8	0.126	-0.33	0.35

# New Sale Date

December 7, 2017 - 1pm  
Now with Video!

Visit Us Online @ **doenzranches.net**

Brad Doenz: 403.642.7694  
Veronica Doenz: 403.642.7582  
Nelson Doenz: 403.642.7696

Email: doenzb@gmail.com

3.2 KM E of Warner on #504  
and 3.2km N on Rg Rd #170  
PO Box 128 Warner, AB. T0K 2L0

## Going to the SD Excellence Sale Saturday, November 11 – Brookings, SD



Lot 10

**ESF 8Y CASSIE 725 ET**

Calved 3/24/17 // P43835808 // Polled Cow  
Sire NJW 735 W18 HOMEGROWN 8Y  
Dam ESF 743 CASSIE 021  
BW 2.7, WW 52, YW 88, M 34, MG 60,  
REA .52, MRB .02, CHBS 25

*This was a once in a lifetime flush where we got a lot of them and they are all keepers. Take advantage of the opportunity and invest in your cowherd.*

**Also Selling - Lot 40****ESF 3253 TIMELESS 756**

an April steer sired by Blacktop Timeless 3253.  
*This is the perfect state fair sized steer. Half brother to Peterson's Reserve Futurity Heifer and McGunigill's Champion Heifer at the Sioux Empire Fair.*

# EGGERS

*Southview Farms*

Tim & Philip Eggers  
25748 476th Ave.

Find us on  
Facebook



Sioux Falls, SD 57104-6513

Phil's Cell: 605-351-5438

email: ESFherefords@aol.com



Lot 11

**ESF 8Y CASSIE 722 ET**

Calved 3/24/17 // P43835808 // Polled Cow  
Sire NJW 735 W18 HOMEGROWN 8Y  
Dam ESF 743 CASSIE 021  
BW 2.7, WW 52, YW 88, M 34, MG 60,  
REA .52, MRB .02, CHBS 25

*We can't wait to see this one at the backdrop next summer. A big swooping belly and sound as could be. If her pedigree repeats itself she will have a picture perfect udder and bring in a sale calf every year.*



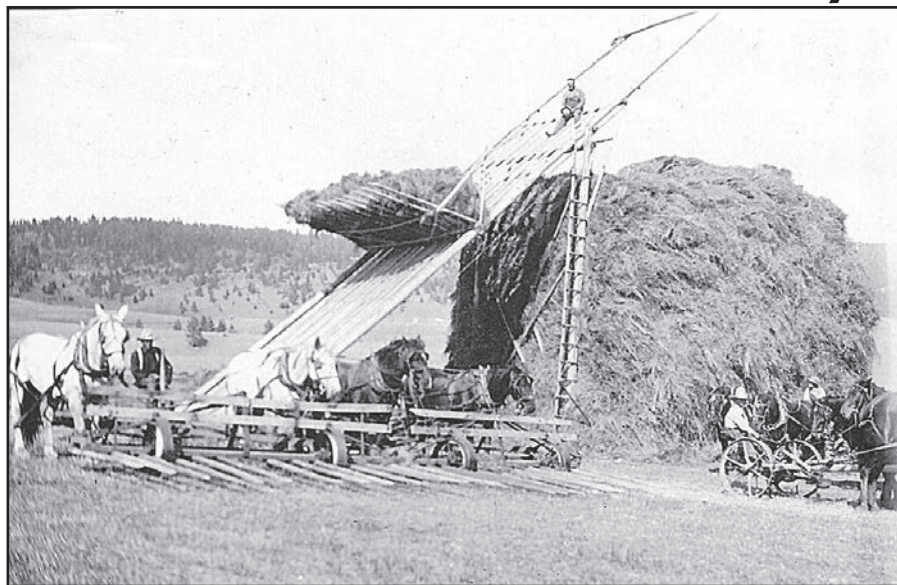
Lot 12

**ESF 41 GLORIA 747**

Calved 3/31/17 // P43812712 // Polled Cow  
Sire CSC 8Y POWELL 41  
Dam ESF 0245 GLORIA 309  
BW 2.6, WW 50, YW 84, M 29, MG 54,  
REA .30, MRB .03, CHBS 22

*This dark red, goggle-eyed heifer comes from one of our most predictable cow families. Consistent, fertile producers you can count on every year. Her side profile is amazing. She is long as they come with a sweet front end.*

## Montana's McIntosh Ranch History



This year marked 90 years the McIntosh Ranch at Avon, MT has used a beaverslide to stack hay. Bill McIntosh says, "in this photo my grandpa Will is at the top of the slide, his brother Gib and my uncle Alex Jones are handling the bullrake teams, my aunts Olive and Ida are driving the rake teams by the stack, and my Dad (Bill/Will) has the pull off team in the foreground. A family crew. Oh, and my grandma was the photographer. Circa 1930. One of my very favorite pictures."

Bill's grandparents moved onto this place in 1910. It originally was homesteaded by his grandmother's uncle in 1892.

The McIntosh family has run commercial Herefords all these years. In more recent years they have added some Red Angus

## BISCHOFF'S Ravine Creek Ranch



RV THUNDERSTRUCK 4239

Thunderstruck's first crop of calves are electric!

» PRODUCTION SALE IS MARCH 3RD, 2018

» **Sires include:**

- \* C Black Hawk Down ET
- \* RV Thunderstruck 4239
- \* R On Target 4673
- \* SHF Access Y90 A216
- \* NJW 78P Twentytwelve 190Z ET
- \* RV 9021W Outlier 4921

» **Offering:**

- \* 50 yearling Hereford Bulls
- \* 15 2 year old Hereford Bulls
- \* 25 Registered Yearling Hereford Heifers
- \* 20 commercial Yearling Hereford Heifers
- \* 50 F1 Baldy yearling heifers



20025 399th Ave • Huron, SD

Home: 605.352.5530 email: ravinecr@santel.net

ravinecreekranch.com

# South Dakota Excellence SALE

Saturday,  
November 11, 2017

35 Fancy Heifer Prospects ~ 21 Showy Steer Prospects ~ 1 Powerful Bred Heifer

South Dakota  
State University  
Animal Science Arena  
11:30 a.m. (cst)  
Brookings, SD

Auctioneer:  
Chisum Peterson

This sale will be broadcast live on the internet.  
**DVAuction**  
Broadcasting Real-Time Auctions  
www.DVAuction.com  
Michael Blume, Rep.,  
605-870-0052



LOT 12



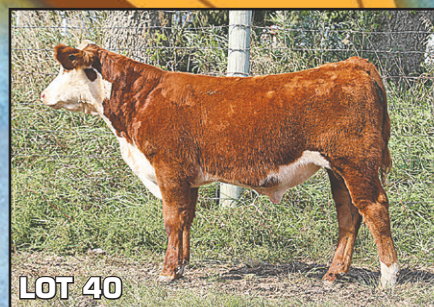
LOT 15



LOT 27



LOT 38



LOT 40



LOT 49

## FRIDAY, NOVEMBER 10, 2017

SDHA Annual Meeting ~ 1:00 p.m. ~ Animal Science Arena  
Social, Banquet and Silent Auction ~ 6:00 p.m. ~ Days Inn

**Silent Auction throughout the evening.**  
**Proceeds go toward the Heifer Grant program.**

## SATURDAY, NOVEMBER 11, 2017

SDJHA Meeting ~ 10:00 a.m. ~ Animal Science Arena  
SD Excellence Sale ~ 11:30 a.m. ~ Animal Science Arena

### SALE DAY PHONES

Art Handel, cell 605-391-8233  
Jill Hotchkiss, cell 605-490-1409  
Levi Landers, cell 308-730-1396

### HEADQUARTERS HOTEL - DAYS INN, 2500 EAST 6TH STREET, BROOKINGS, SD

For reservations: 605/692-9471. Mention SDHA block  
to get rate of \$94.50. Reserve by October 20.

## SPECIAL GUESTS & REPRESENTATIVES

Seth Silverberg, President SDHA  
Mark & Jeanne Johnson, SDHA Manager,  
605-957-5036  
Jill Hotchkiss, Hereford America,  
605-490-1409 cell  
Phil Eggers, The Livestock Link,  
605-351-5438 cell  
Art Handel, Handel Marketing  
605-391-8233 cell  
Levi Landers, American Hereford Association,  
308-730-1396  
Jeff Kapperman, Tri State Neighbor,  
605-940-5104  
Jim Scheel, Cattle Business Weekly,  
605-545-1521  
Michael Blume, DVAuction, 605-870-0052



LOT 50

*For more information or catalog contact:*

### SOUTH DAKOTA EXCELLENCE SALE COMMITTEE

Lori Peskey, 605-350-1015 ~ peskeyfarm@gmail.com  
Matt Zens, 605-310-5782 ~ mattzens@yahoo.com  
Michael Blume, 605-870-0052 ~ blumeherf@yahoo.com

Mark & Jeanne Johnson,  
**SD Hereford Assn. Managers,**  
605-957-5036 ~ jeanne.johnson@yahoo.com

*Attention  
Juniors!*

**\$600 GRANTS  
GIVEN AWAY TO  
SELECTED YOUTH TO  
PURCHASE HEIFERS  
IN THIS SALE.**

Applications are available by  
calling 605-957-5036  
or online at:  
[southdakotaherefords.org](http://southdakotaherefords.org).

*Online catalog at: [www.southdakotaherefords.org](http://www.southdakotaherefords.org)*

# National Hereford Feedout Report – 2016 & 2017 Feeding Period

by Tom Granzow

The Kansas Hereford Association sponsored another National Hereford Feedout at Royal Beef near Scott City, KS that began in December of 2016 and ran through July of 2017. These calves really did well for the participants and netted a very good return back to the home ranches when compared to the calf prices in the fall of 2016. The re-

tained ownership worked well and also provided some valuable information for those producers that they can use in breeding decisions to enhance their profitability even more in the future.

As for the industry, we proved that Hereford genetics fit well into the overall beef industry and excel in the aspects that lead directly to more profit. Calves in this test were predominantly straight

Hereford, but there were black white faced and red white faced cattle as well since some of the Hereford breeders involved are convincing their customers to retain some of those calves and “test the water” to see just how much value can be added when a white face is put on their calf crop.

As mentioned above, the test was conducted at Royal Beef near Scott City, KS. Thank you to the crew there, especially Mark Lampe, for all of their work. The Kansas Yard Average that is used in comparing the NHF cattle to the industry is a compilation of data from eight yards in Kansas. The yards included are Brookover Ranch Feed Yard, Deseret Cattle Feeders, Hoxie Feedyard, HyPlains Feedyard, Kearney County Feeders, Poky Feeders, Pratt Feeders, and Supreme Cattle Feeders.

Our numbers were up this year compared to the year before. We finished 180 steers this year and they came from the following producers: Book-cliff Herefords, Russell, KS; Gustafson Herefords, Junction City, KS; Shumaker Polled Herefords, Wetmore, KS; KEG Hereford Ranch, Valentine, NE; Rutt Herefords, Campbell, NE; Baker Herefords, Rosalia, KS; Greg Carey, Russell, KS; Matt Mai, Russell, KS; Dr. Joe Butler, Valentine, NE; Brad & Dixie Hollenbeck, Thedford, NE; Jerry Warren, Mullin, NE; and Moon Herefords, Harrison, AR. Thank you to all of these breeders for their participation. They garner a lot of information about their own cattle and get to compare notes with the other folks involved to figure out where they can improve their herds and the breed as a whole. It helps us show the industry what Herefords can do in the real world, thus enhancing our marketing efforts and proving the worth of Herefords.

As has been the case for the last couple of years, days on feed has be-

come an issue for many. This year, our days were down a bit from 2016, but it is something we are still working on. A good percentage of the cattle were harvested (still not used to that lingo) the first part of June and many did they do it all. The rest of the cattle went to slaughter the tail end of July after a significant drop in the market. It seems like the feeders are growing the cattle a bit longer at the beginning of the feeding period as our average dry matter consumption over the whole feeding period was below 22 pounds. We would like to see that higher and for fewer days, but with all the new feed additives and implants that are geared for more days, sometimes they seem to be doing things that we would rather have our genetics do for us!! Once again, in this test, we did not use the short term beta blockers. The muscle we put on was our own, not contrived. I am hearing some yards are going to quit those things after the last couple of years because they are recognizing some of the down side. Good for them. Let's get back to raising them right.

*The muscle put on was not contrived. I am hearing some yards are going to quit those things (additives and implants) after the last couple of years because they are recognizing the down side.*

Well, let's get to the numbers. Just how did we do and where do we stack up against the industry norms. Remember, we used fewer implants than the norm and we are working mostly with calf feds, not the norm in the industry, as most feed yearling cattle. Our calves had an average number of days on feed of 192 with a range of 175 to 220. In the performance traits, our average daily gain was 3.5 with a producer range of 3.1 to 3.8. Really good gain for the number of days and the long growing period. The Kansas Yard Average for the same feeding period showed an average daily gain of 3.47 while the yard average days on feed was 168. We gained right with the higher age cattle and had a longer feeding period of 24 days. Good numbers.

In pounds of feed per pound of gain, a really important profit maker, the Hereford calves consumed an average

*In pounds of feed per pound of gain, a really important profit maker, the Hereford calves consumed an average of 5.61 pounds of feed per pound of gain with a range of 4.81 to 6.65.*

of 5.61 pounds of feed per pound of gain with a range of 4.81 to 6.65. This is on a dry matter basis. The Kansas

## Alexander Farms

### SELLING BY PRIVATE TREATY BULLS AND HEIFER CALVES



**AF MISS K DOM 1708**  
(P43791383) (DOB 3/8/17)

AF HL KING DOMINO 1018  
AF HL KING DOMINO 1433 ET  
AF MISS K DOM 1006 ET

AF HL KING DOMINO 1108  
AF MISS K DOM 1416  
AF MISS K DOMINO 201

AF HL KING DOMINO 737 ET  
AF MISS K DOM 622  
KPHR HL1 KING D 3165  
AF MISS K DOM 532  
AF HL KING DOMINO 736 ET  
AF MISS K DOM 435  
HL1 KING DOM 71176  
HAVRE MS KING DOMINO 37G

AF Miss K Dom 1708 and 5 half sisters, all straight Havre King Domino pedigreed are among the heifer calves for sale. All suitable for junior projects that will develop into foundation cows.

Also selling full possession and 3/4 semen interest in **AF KINGDOM 1614** (P43726486)

For more information contact:

John Alexander • Phone: 785-643-6364 • alexfarmed@gmail.com



## 2017 PRODUCTION SALE

### TUESDAY, NOVEMBER 14 • NOON

At the Ranch near Newkirk, Oklahoma  
(Located southeast of Arkansas City on the KS-OK state line)



5155  
Sired by CHURCHILL SENSATION 020X  
630Z BW-2 WW49 YW74  
M36 HRA 35 MLY 24



105  
Sired by MCR L91 DOMINO 627 ET  
Sells with an April heifer calf at  
side by BH Okla Trustworthy 3055

SELLING

- 34 HEREFORD BULLS
- 30 REG. HEREFORD FEMALES
- 24 RED ANGUS BULLS
- 25 REG. RED ANGUS FEMALES
- 100 COMMERCIAL FEMALES
- 2 FLUSHES • 38 EMBRYOS

**VISIT [WWW.BOWLINGRANCH.COM](http://WWW.BOWLINGRANCH.COM) FOR MORE INFORMATION**

MELVIN YOUNG, RANCH MANAGER • (580) 761-9257 • [BOWLINGRANCH@OUTLOOK.COM](mailto:BOWLINGRANCH@OUTLOOK.COM)

NANCY BOWLING • (580) 362-5026 • [NKBOWLING@YAHOO.COM](mailto:NKBOWLING@YAHOO.COM)

SALE MANAGER: JUSTIN B. STOUT • (913) 645-5136 • [JBS5356@HOTMAIL.COM](mailto:JBS5356@HOTMAIL.COM)



(continued on page 16)

# D K DAKITCH HEREFORD FARMS "Our Brand is Your Success" K

58 Years in the Hereford Business

## FALL FEMALE SALE SATURDAY, NOVEMBER 18TH

**Selling Approximately: 3 Donor Cows • 5 Bred Heifers  
6 Open Show Heifer Prospects • Semen & Embryos**



**Hosted by: AUCTION OPTIONS**  
ONLINE AUCTION SOLUTIONS

Bidding questions contact  
Cody Crum 217-248-7282.  
For a catalog please contact us. Visit our  
new and improved [www.dakitchfarms.com](http://www.dakitchfarms.com).



Ms Dakitch 19B Eclipse 102E  
Crossroads x Trump  
BW 3.5 WW 67 YW 105 M 30  
Lot 2 - 2-27-17



Ms Dakitch MDK 138A Diary 60E  
Lux X Top Cut  
BW 4.3 WW 53 YW 87 M 26  
Lot 1 - 2-11-17



Ms Dakitch 92B Polly 68E  
Cruiser X Border  
BW 3 WW 51 YW 86 M 25  
Lot 3 - 2-14-17



Ms Dakitch MEK Bonita 177E  
Trump x Tundra 62T  
BW 2.7 WW 62 YW 105 M 26  
Lot 6 - 4-11-17



Ms Dakitch MDK Pearl 37W  
Traveler x tank  
BW 4.1 WW 57 YW 85 M 22  
Lot 7 - bred to Crossroads due fall 2017



Ms Dakitch MDK Charity 125Y  
T Bone x Tundra 1S  
BW 4.2 WW 59 YW 109 M 27  
Lot 8 - Bred Homegrown 8Y due Feb 2018



Ms Dakitch MDK 59A Felina 175E  
Trump x Trust  
BW 2.8 WW 62 YW 104 M 24  
Lot 5 - 4-9-17



Ms Dakitch 111Y Trish Polly 8D  
Crossroads x Tundra 62T  
BW 3.2 WW 68 YW 102 M 30  
Lot 10 - 1-26-16 - Bred Catapult 697



Ms Dakitch MDK Classy Miss 29C  
Trump x Tank Master  
BW 3.5 WW 54 YW 86 M 28  
Lot 15 - Selling right to flush

**DON'T FORGET OUR 4TH ANNUAL BULL SALE MARCH 31, 2018**

Visitors Always Welcome

## DAKITCH HEREFORD FARMS

Matthew, Darci & Dawson Kitchell • David, Lorie, Michael & Mason Kitchell  
3471 St Hwy 200, Ada, MN 56510 • [matthewdkitchell@gmail.com](mailto:matthewdkitchell@gmail.com) • 701-799-7690

Find us on Facebook



[www.dakitchfarms.com](http://www.dakitchfarms.com)

(continued from page 14)

Yard Average for the same period was 6.12, so we beat the yard average by 9 percent. Real good for calves against yearlings and the added days for growing. What about the comparative cost of gain? Our cost to put on a hundred pounds of gain was \$63.56 with a range of \$51.20 to \$70.14. The Kansas Yard Average at the same time was \$74.57. That is a 17% advantage to the Hereford and Hereford cross cattle. I would call that significant.

*Our cost to put on a hundred pounds of gain was \$63.56 with a range of \$51.20 to \$70.14. The Kansas Yard Average at the same time was \$74.57. That is a 17% advantage to the Hereford and Hereford cross cattle. I would call that significant.*

Another important thing to note is that the highest cost of gain in the Herefords was still below the yard average. And, we had more days, thus more yardage. Once again, the most important trait in making a profit in cattle is feed efficiency. This efficiency is expressed in cost of gain in the feedyard since it takes into account all aspects of the feeding period, like sickness and death loss. Yet it can also be applied to the cowherds that these calves come from. Everything we do is tied to a cost of gain and this test shows that we are 17% better when all the costs are put together.

So, as usual, we showed that Herefords do really well at the bunk, extremely important. But, how did we do when it came to the final product? This is something we have always taken a lot of heat about, deserved or not.

In all my years of feeding cattle and working in that area, it always seemed that Herefords were taking a bit of a

rap on that. It seemed that the way the feedyards and packers were managing the Herefords had more to do with some of those contrived facts, more so than the Herefords themselves. Well, now we are proving that we can take the longer feeding period when forced to and still hang up an industry valued product.

The average slaughter weight on these calves was 1,324 lbs. with a range of 1,104 to 1,574. This compares to 1,370 for the Kansas Yard Average. So, for the most part we were comparable. Our hot carcass weight average was 834.12 with a range of 785-886. Very acceptable. This made our dressing percent come in at 63%. That's without beta blockers. Once again, excellent for the industry. Our average Yield Grade was 3.25 with a range of 2.5 to 3.6. Real darn good again.

*This made our dressing percent come in at 63%. That's without beta blockers. Once again, excellent for the industry. Our average Yield Grade was 3.25.*

they come from and are repeatable.

The heifer mates to them and their sires and dams are out in the real world producing the kind of range bulls and replacement females that this industry needs. We can look at these cattle that perform in the real world and state unequivocally that they are efficient. Why? Because we possess it in our very genome. It has been proven time and time again through trials like National Hereford Feedout, Genetic Outreach Program, the Olsen studies, Triple A and others. Now let's promote it.

*We can look at these cattle that perform in the real world and state unequivocally that they are efficient. Why? Because we possess it in our very genome. It has been proven time and time again through trials like National Hereford Feedout, Genetic Outreach Program, the Olsen studies, Triple A and others. Now let's promote it.*

Congrats to these participants for enhancing their carcass traits without sacrificing the performance and bred in efficiency that makes our living. Let's follow these guy's lead and not give up anything for carcass traits. We have proven that we can have it all. We have not sold out our breed's quality traits and performance efficiency to fit a packing industry that moves all around the marketing target board and rarely pays for it.

If you are interested in participating in a National Hereford Feedout, the Kansas Hereford Association will once again sponsor a test. This year, the test is being moved to Lincoln County Feeders, north of North Platte, NE. Lincoln County purchased the software and data collecting equipment from Decatur County Feeders, a yard that had long been known for seamless data acquisition and outcome based marketing. Decatur County sold to Hoxie Feeders and they decided not to pursue those things anymore, thus Lincoln County bought the equipment. The Lincoln County management staff is well versed in data acquisition and carcass data and we fully expect this to be quicker and better data transfer situation. We also think the cattle will be fed for more of an outcome-related basis, not just a lot of days. We have a lot of interest and it looks like our numbers will be up from last year. We think this move will enhance the test and make it even better for all involved.

The staff at Lincoln County want to get cattle to an optimum end-point and do so as quickly as the cattle can. We are also working with CHB® to try and get a marketing opportunity established at Greater Omaha or at one of the other plants with this move.

**The arrival dates will be the first full week of December, beginning on**

In the actual carcass data, the NHF calves did very well. Our average marbling score was 4.384 with a range of 3.18 to 6.74. Backfat measurements averaged .565 in a range of .26 to 1.24. The Rib Eye Area measured average was 13.37 sq inches in a range of 9.9 to 16.3. These calves showed well for the most part in the muscle phase and overall graded 67% Choice and 33% Select.

So, what do we conclude after seeing and deciphering these results. As stated before, the participants in this test have valuable information that they can use to enhance their breeding programs in many ways. Efficiency, as we know, is important in all aspects of our operations and is the biggest money maker we as Hereford breeders have at our disposal.

So, what does 17% better in efficiency mean? In the feedyard, it means \$71.50 per animal at today's feed costs. That is very significant. As compared to the showing, this added benefit to Herefords is palpable, we can prove it.

*So, what does 17% better in efficiency mean? In the feedyard, it means \$71.50 per animal at today's feed costs.*

These steers were not necessarily hand picked or fed "special." The breeders involved placed cattle that represented different sire groups, and all different bloodlines from the Hereford breed, both Horned and Polled. They truly represented a cross section of our breed and the results are relevant to everyone.

There were no judges or ribbons, just money in the pocket of the producers. The traits these cattle showed are a reflection of the breeding programs

**Champions win \$1,000 • Reserves win \$600 • Class Winners \$100**

*Cattle purchased in this sale are eligible for the NJHA Futurity Show in Kearney, NE, held on June 2, 2018!*

**Sunday, November 19, 2017 - 12:30 PM**  
**Fonner Park - Sheep Barn**  
**Grand Island, NE**

To request a catalog visit: [www.ncbraskaherefords.com](http://www.ncbraskaherefords.com)

# Classic Hereford Beef, A Long-Standing Tradition in Miller's Markets

Careful attention to detail connects quality Classic Hereford Beef, part of the blended Choice and Select category through Certified Hereford Beef® (CHB), as it moves from the cow herd to the packing plant to the consumers at local markets.

In Indiana and Ohio, there is no doubt about the excellent connection as the beef moves from pasture to plate.

"Miller's very much appreciates all the services and close relationship they've had with the Greater Omaha staff over the years as well as the customer services provided by the Certified Hereford Beef® staff," Garry Miller, owner of Miller's Markets said. "That would include the help of American Hereford Association ambassador Mary Ann Berg and her co-ambassador Nikki Morrison at the grand opening of

the New London, OH, and Lodi, OH, store openings in 2012."

Learning of the commitment to quality helps producers understand the retail side of the beef business.

Miller's Markets has been in the family for three generations. Garry's father Joe and uncle Roger started the business in Wauseon, OH, in 1958. The family tradition continues with Garry Miller's children Jenny, Joe, and Mike who are part of the operation.

Providing groceries to customers in twelve stores in Indiana and Ohio, the family provides the essentials for their customers. In some locations, they have remodeled stores. In others, they have added gas stations.

The family owns Miller's Sign Company which makes signs for companies all over the United States, including canopies for convenience stores. Ryan Miller, one of Garry's sons, runs



Garry Miller and his family outside one of the Miller's stores.

this operation.

When disaster strikes, the Miller family embraces the tradition of giving back to the communities. Currently

they have spearheaded a drive to fill paper sacks with necessities for victims of

(continued on page 18)



Miller's Markets were recognized by the American Hereford Association in 2012 for their tremendous sales and support of Certified Hereford Beef®.

**the 4th.** The stipulations are that you enroll at least 5 steers that are CHB® qualifiers, but we will test as many as you like. The cost is \$50 per consignor and \$5 per head tested.

For more information, contact Tom Granzow, 765 South 3000 Road, Herington, KS 67449. Phone numbers are 785-466-2247, 785-466-6790 (cell) and email is kansashereford@tctelco.net. If there is enough interest, we will also offer a test starting in February for those that would rather feed more of a yearling type.

I must also interject here that the American Hereford Association is once again getting involved with this program and using the carcass and performance data as part of AHA's performance program. Hat's off to Jack Ward, Trey Befort, Shane Bedwell, and Stacy Sanders for recommitting the AHA to this program. They are doing a lot of work to take data gathered from the NHF over the years and implementing it into the data base. Trey has spent much time in making all of this more timely and seamless. He is also helping the participants that are AHA members get this data into the system. So your personal data gathered in the NHF would be eligible for you to enter into your database at AHA through the Form 7. Once again, thank you to all of the participants in the National Hereford Feedout and to Royal Beef for all they have done for us.

## EASTERN MONTANA GENETICS

Selling Private Treaty

**100 BULL CALVES • 30 COMING TWOS • 95 REGISTERED BRED HEIFERS**

**50 COMMERCIAL HEREFORD COWS BRED RED ANGUS • 70 F1 RED BALDIE HEIFER CALVES**

**Sired by:**

**CHURCHILL SENSATION 028X (35 sons) • SENSATION SONS (14 sons)**

**AGA 67X BADGER EXPRESS ET 3B (12 sons)**

**AGA 2U BRITISHER ZONE 101Z (8 sons)**

**AGA 2U BRITISHER 85Z (8 sons) • BOYD MASTERPIECE 0220 (12 sons)**

**SHF RIB EYE M326 R117 (10 sons) • BR 4W STANMORE 204B (8 sons)**

Beery's Land & Livestock Co.

VIDA, MONTANA

59274

**MATT AND FAMILY**

406-773-5721 • CELL 406-979-5720

blcattle@gmail.com

MADRI BLOM • HERDSMAN

406-979-5711 • blom.anebell@gmail.com

## BEERYHEREFORDS.COM

## HEIFERS FOR SALE PRIVATE TREATY



### 125 HEAD OF BRED HEREFORD HEIFERS

AI'd to SAV Platinum 0010 due 2/20-3/10 (several groups, each group AI'd in 1 day)  
48 Hereford heifers bred to LBW Angus bulls due early March 30 days  
24 Hereford heifers bred to LBW Angus bulls due 3/25-5/10  
20 Hereford heifers bred to LBW Hereford bull due 3/5-5/10

### 97 HEAD OF RWF & BWF BRED HEIFERS

43 F1 RWF heifers AI'd to HXC Conquest 4405P in 1 day due 3/5  
17 F1 RWF heifers bred to LBW Red Angus bulls due 3/10, 30 days  
25 F1 BWF heifers AI'd to SAV Platinum 0010 or Carter Wind Star 218 due 2/20-3/10  
12 F1 BWF heifers bred to LBW Angus or Red Angus bulls due 3/10-5/10

\*all heifers have been ultrasound preg checked: can sort into short calving intervals\*

Please join us on January 27, 2018 for our annual Private Treaty Bull Sale

**MELCHER**  
HEREFORDS, INC.

See Videos at [www.MelcherHerefords.com](http://www.MelcherHerefords.com)

Don and Jean Melcher  
Matthew and Kristen Melcher  
Kevin and Sherry Melcher

Home: 402-626-7994  
Don: 402-336-7194  
Kevin: 402-340-6189  
Matt: 402-336-8182

86287 Voyager Rd., Page, NE

(continued from page 17)

Hurricane Harvey. Customers are asked to buy them and Millers will see to it that they are sent to Texas for distribution.

Miller's Markets have been a partner for the majority of the 20 years with the Classic Hereford Beef program with Greater Omaha. During that time, over 17 million lbs. of Classic Hereford Beef have moved from Greater Omaha to distributors such as Troyer's Food Distributors of Goshen, IN, to the twelve stores that are part of Miller's Markets. Miller's currently sell Classic Hereford Beef in the following locations: LaGrange, IN; Rome City, IN; Garrett, IN; Clyde, OH; Genoa, OH;



Miller's spearheaded a drive to help victims of Hurricane Harvey.

Lodi, OH; Montpelier, OH; New London, OH; Norwalk, OH; Ashland, OH.

"Greater Omaha's quality, standards, and flavor distinguish its Classic Hereford Beef over any other packer," Garry said. "The workmanship and consistency of the product is important. They are great people to work with at GOP. Their response time to any issues is great. Troyer's Food Distributor ships out product which is a huge asset for an independent retailer."

Garry said they are excited about the new value-added beef products such as the competition brisket, the single pack tri tip, and Greater Omaha's new ground beef program.

And what is the key to success? Mill-

er's believes in volume-driven pricing compared to other retailers which are more concerned about margin-driven pricing.

Garry came out on top when betting on the quality of the beef they sell. Garry met with a beef merchandiser and the representa-

(continued on page 20)

Don't Miss It!

37th Annual

**Go-Pher the Purple SALE**

**SAT., DECEMBER 9, 2017**

**Sale at Noon • Hutchinson, MN**

**Auctioneer:**

Jim Birdwell • 580-549-6636

This sale will be broadcast live on the internet.

**DVAuction**

**FRIDAY, DECEMBER 8**

**Annual Meeting:**

McLeod County Fairgrounds 1 p.m.

**Social Hour & Banquet:**

Days Inn • Social 6 p.m. • Banquet 7 p.m.

**During the Banquet**

**ELITE 8 SALE** featuring semen and embryo packages as well as 'pick of the calf crop' and 'right to flush' opportunities.

#### Sales Staff:

Levi Landers - AHA - 308-730-1396  
Logan Hoffmann - DV Auctions - 701-388-2618  
Bill Schermer - Midwest Beef Producer - 641-425-2641  
Alex Acheson - Minnesota Farm Guide - 785-366-1185

Mohican Karen Z14  
Selling right to flush.  
Also a package of 3 embryos sired by CRR 668Z Commitment 654 in the **ELITE 8 SALE Friday Night.**

Bred Heifer  
sired by  
VIN-MAR Red Baron

A TH 22R 16S  
Lambeau 17Y  
Granddaughter

CRR Catapult 322  
several offspring sell!

Selling over 55 lots

including herd bull prospects, heifer calves, bred heifers and bred cows.

Catalog available on the DV Auction website or go to [mnherefordbreeders.org](http://mnherefordbreeders.org)

Contact the sale manager for more info:  
STEVE WOLFF 701-710-1574  
[swolff318@yahoo.com](mailto:swolff318@yahoo.com)

#### Sale Headquarters:

Days Inn, Hutchinson, Minn.

Hwy. 7 W. — 320-587-6030 or 800-225-3297.

Ask for Hereford block of rooms for reduced rate by Nov. 10, 2017.



# FENTON HEREFORD RANCH INC.

FE

**53rd Annual Fall Sale • SAT., NOVEMBER 18, 2017**

**OFFERING: 60 BULLS (HORNED & POLLED)  
200 REGISTERED AND COMMERCIAL BRED HEIFERS SELL  
5 BROKE RANCH GELDINGS • 15 FANCY 2017 FOALS**



**ZZB 78D**



**ZZB 92D**



**ZZB 95D**



**FHR 111D**



**FHR 301D**



**FEATURE SALE GELDING**



**FEATURE SALE GELDING**



**FEATURE SALE GELDING**

**VISIT US AT:  
WWW.FENTONHEREFORDRANCH.COM  
TO VIEW CATALOGUE**

**Al & Lori Fenton  
Becky & Curtis Snethun  
Ray-Lynn & Kacee  
Phone/fax 780-754-2384  
Cell: 780-842-7806**

**Conrad & Janel Fenton  
Dalee, Prior, Emerson & Beau  
Cell: 780-209-3600**

**Blair & Jessica Fenton  
Gray, Tayva & Laney  
Cell: 587-281-0900**

**fentonherefordranch@gmail.com • Box 479, Irma, AB T0B 2H0  
7 mi. E. of Irma on Hwy. #14 or 11 mi. W. of Wainwright - Look for Hereford Sign**

**VIDEOS OF ALL SALE LOTS AVAILABLE AT FENTONHEREFORDRANCH.COM OR DLMS BY OCT 30**



(continued from page 18)

wanted to know if Miller's Classic Hereford beef was "that good." The two of them went to every Miller's store to see if there had been any complaints in the beef departments in the last ten years. During the tour, they found there had only been one complaint. They had a bet for dinner and Garry won.

### Pasture to plate

The quality steaks and burgers that line the meat counter have to start with quality animals. The Bergs of Dalton, OH, strive to provide beef that tastes good and appeals to consumers. The Bergs raise Herefords in northeast Ohio which is in Miller's market area.

Jerry and MaryAnn Berg promote the Hereford breed as they have been part

of the state and national Hereford organizations. Through her work with those groups, Mary Ann was appointed as an ambassador for the American Hereford Association in 2009. She traveled to numerous locations to share the benefits of beef from Hereford animals. She was assigned to help with the openings in Lodi, OH, and New London, OH, for Miller's Markets.

"My co-ambassador, Nikki Morrison, and I were very pleased with the customer's interest in the Hereford Beef product we were demonstrating that morning at Miller's," MaryAnn Berg said. "They not only appreciated the fact that the product was USA raised, but we were local producers promoting the product. The samples were enjoyed and we were often asked if they could have seconds."

Good customer service was evident at Miller's MaryAnn said. The staff at the Miller stores was very friendly and extremely accommodating.

What do the Bergs enjoy most about raising Herefords?

In addition to enjoying eating Hereford beef, Jerry said, "I enjoy the results of breeding. When calving season comes I enjoy seeing these new calves and seeing if they're making progress." They are always eager to share their love of cattle and particularly enjoy educating the public about agriculture and Hereford cattle.

The couple is active in the Ohio Hereford Association. MaryAnn was elected President of the National Hereford Women's organization and retired in 2012. In 2010 the Berg Polled Hereford Farm was awarded the Farm Credit Heritage Farm Award and the Hall of Merit Award from the Buckeye Polled Hereford Association.

Jerry and MaryAnn love visitors and frequently host family and friends for dinner, hayrides, sitting around a fire on a warm fall evening or just a gator ride around the farm to look at cows and calves.

Educating others about the Hereford breed is a natural part of life at the Berg's farm. They enjoy helping people know how the animals in their pastures get to the meat counters at places like Miller's Market.



Jerry and MaryAnn Berg, Hereford breeders from Dalton, OH, are also active Hereford ambassadors and promoters.



Back in 2003, Miller's was presented with this beautiful recognition trophy for 7 years and 7 million pounds of Certified Hereford Beef® sales.

### Excellence Rewarded

Part of the Greater Omaha field staff, Brad & Jan Ellefson, have always enjoyed listening to Garry Miller's marketing strategies as a smaller independent retailer competing with larger retail markets. Garry has proven time-and-again that smaller can be better and successful, and speaking of being successful, Miller's, one of the oldest Classic Hereford Beef customers, has received over the years two bronze bull awards in appreciation of their loyalty and dedication.

## Final Farewell

### Marvin Feddes

Marvin Feddes entered the joyous presence of Jesus on September 19, 2017, at age 87. God blessed him with health and energy until the very last hours of his life.

Born May 15, 1930, the youngest son of Jacob and Lena Feddes, Marv grew up in a Christ-centered home. Aside from military service, he was a lifelong rancher in the Gallatin Valley. He was engaged to Nellie Izenbaard in 1950, but their wedding was delayed for three years while he was in Germany with the United States Army. Marv and Nell were married on August 14, 1953.

Marv and his older brother, Neal, became ranching partners in the 1950s and established Feddes Herefords near Manhattan. The cattle gained a stellar reputation and sold to herds across America and in other countries. In recent years, sons Dan and Tim took over management of the herd, but Marv continued to help. He loved driving through pastures, distributing nutrients, and making sure the cattle were all healthy.

Although successful raising cattle, Marv cared more about raising kids.

God blessed Marv and Nell with six children. They learned the Bible at home, saw the life of Christ at work in their parents, and were educated at Manhattan Christian School. When grandchildren came, Grandpa delighted in them and gave them lots of candy and hugs. He cheered for them at sports events. He also drove many thousands of miles with Nell each year to visit children and grandchildren who lived far from Montana.

Marv's love reached far beyond his family. He was a charter member of Bethel Christian Reformed Church and served as an elder or deacon for many years. He worked to relieve poverty locally and served in disaster relief efforts with World Renew and the American Red Cross. He was generous with people in need and befriended countless people at the county jail and state prison. Because Marv had experienced Jesus' love and forgiveness, he shared that love and forgiveness with people convicted of crimes. He believed God could rescue and transform anybody. His favorite song was "Amazing Grace."

(continued on page 22)

# THE LOWELL FISHER FAMILY

## — PRODUCTION SALE —

**FEBRUARY 15, 2018**

At the ranch, Spencer Nebraska

**SELLING 50 BULLS**

Including our 2018 carload Bulls  
30 of our top Heifers  
1 pick of the cowherd flush

### SIRES INCLUDE:

CL 1 Domino 589C, CL 1 Domino 314A, CL 1 Domino 0145X,  
Ponca King Pin 204, Sensation and B&D L1 Domino 300

## LOWELL FISHER FAMILY HEREFORDS

Est. 1943

48979 Nordic Rd., Spencer, NE 68777

Lowell and Carol  
402-589-1347  
402-340-6084 cell

Steven and Dalene  
Fisher  
918-440-4848

Nathan Gillaspie,  
Herdsman  
816-401-9677

[www.lowellfisherherefords.com](http://www.lowellfisherherefords.com)

# MOHICAN WEST BULL SALE

**MONDAY, NOVEMBER 13, 2017 • 1:00 PM**

**SELLING 50 BULLS**

Auctioneer: Joe Goggins // (MST)  
at the Ranch, Laurel, MT

CED	1.6	SC	0.8
BW	3.4	CARC	69
WW	59	FAT	-0.19
YW	94	REA	0.57
M	27	MRB	-0.03
MG	56	BMI	\$ 16
CEM	1.4	CEZ	\$ 15
MCW	102	BII	\$ 12
UDDR	1.11	CHB	\$ 28
TEAT	1.12		



**MOHICAN BRICK 16D** // 43690195 // BW 78 // WW 620  
Sired by: Mohican Brick M13B

CED	0.9	SC	0.9
BW	2.7	CARC	62
WW	52	FAT	0.020
YW	78	REA	0.72
M	24	MRB	0.17
MG	50	BMI	\$ 20
CEM	0.2	CEZ	\$ 15
MCW	91	BII	\$ 17
UDDR	1.29	CHB	\$27
TEAT	1.30		



**MOHICAN BLUEPRINT 45D** // 43690349 // BW 75 // WW 595  
Sired by: Mohican Blueprint 69B

CED	1.9	SC	0.8
BW	2.0	CARC	63
WW	48	FAT	.006
YW	78	REA	0.44
M	27	MRB	0.17
MG	50	BMI	\$ 18
CEM	2.2	CEZ	\$ 16
MCW	87	BII	\$ 15
UDDR	1.15	CHB	\$ 26
TEAT	1.17		



**MOHICAN CHARGE 107D** // 43698413 // BW 76 // WW 561  
Sired by: Mohican Take Charge 417A ET

CED	-3.7	SC	0.7
BW	4.4	CARC	65
WW	52	FAT	-0.18
YW	89	REA	0.55
M	26	MRB	-0.04
MG	52	BMI	\$ 12
CEM	-0.1	CEZ	\$ 10
MCW	111	BII	\$ 11
UDDR	1.08	CHB	\$23
TEAT	1.05		



**MOHICAN 2012 407D ET** // 43690790 // BW 80 // WW 620  
Sired by: NJW 78P Twentytwelve 190Z ET

CED	0.1	SC	0.6
BW	3.0	CARC	62
WW	47	FAT	-0.002
YW	82	REA	0.53
M	31	MRB	0.13
MG	55	BMI	\$ 14
CEM	1.0	CEZ	\$ 13
MCW	101	BII	\$ 11
UDDR	1.31	CHB	\$ 25
TEAT	1.29		



**MOHICAN TECK 411D** // 43690795 // BW 90 // WW 695  
Sired by: TH 113W 11X Hi-Tech 17A

CED	-1.0	SC	0.6
BW	4.3	CARC	65
WW	52	FAT	-0.006
YW	90	REA	0.39
M	32	MRB	0.08
MG	57	BMI	\$ 12
CEM	1.6	CEZ	\$ 12
MCW	108	BII	\$ 9
UDDR	1.26	CHB	\$ 26
TEAT	1.29		



**MOHICAN TECK 416D ET** // 43690801 // BW 90 // WW 579  
Sired by: TH 113W 11X Hi-Tech 17A

## MW MOHICAN WEST

Conard & Nancy Stitzlein, Owners  
Terry Powlesland, Mgr.  
Office phone and fax (406) 633-2600  
(406) 633-2810 • Cell: (406) 670-8529  
E-mail: mohicanw@yahoo.com

3100 Sportsman Park Rd.  
Laurel, MT 59044  
Catalog may be viewed online at  
www.herefordamerica.com or  
www.mohicanpolledherefords.com

**WWW.MOHICANPOLLEDHEREFORDS.COM**

# Final Farewell

(continued from page 20)

Marvin is survived by his wife of 64 years, Nell, and their children Michael (Rene), Dan (Robyn), Tim (Tami), Marvonne (Dwight) Logterman, David (Wendy), and Paul (Deb); 27 grandchildren; 9 great-grandchildren; and his sister Lee Venhuizen. Marv was preceded in death by brothers Henry and Neal; sisters Alice Huttinga and Nellie Cole; and granddaughter Rebekah Feddes.

Memorial gifts may be sent to Bozeman Prison Ministries, P.O. Box 6281, Bozeman, MT 59771 or Christian Leaders Institute, 17771 West Spring Lake Rd, Spring Lake, MI 49506.

## Curtis O. Eggers

Curtis Ordell Eggers died October 4, 2017 at Avera McKennan Hospital in Sioux Falls, SD.

Curtis Eggers was born February 3, 1924 in Renner to Elmer and Minnie (Moe) Eggers. He attended Eggers' Grade school through the 8th grade. He received an Honorary High School Diploma from Baltic High School in 2002.

Curtis enlisted in the United States Army in January 1943. He became part of the 114th Regiment, 44th Division and was assigned to A. Co. Curtis fought in the European Theatre and was awarded with three Bronze Service Stars and the Combat Infantry badge.

On March 2, 1946, Curtis was united in marriage to Jean Bachtell in Pipestone, MN. They moved to the Ed Nes-

san farm in 1946 where they farmed as well as milked cows for 29 years. In 1976 they moved to the Eggers' Homestead and continued to farm until the fall of 1986.

Curtis was involved in many leadership roles such as Soil Conservation, Minnehaha Funeral Home, Mapleton Township board, The American Legion, Farm Services Agency, Silver Creek Watershed, Eastern Dakota Development District, VFW, 40 & 8, Farm Bureau, Renner Fire Department, and Republican Party to name a few.

Curtis was a member of Renner Lutheran Church all of his life. One of his joys in life was taking care of his grandchildren and planning activities for them. Saturday morning was also an important day for Curtis as it was "pancake breakfast day" at his home with the entire family and walk-in guests. He was also known for his delicious chocolate chip cookies.

Grateful for having shared his life are, daughters, Sandra (Dean) Sorum, Kathy (Paul) Evenson, Lanette (Darlold) Diede, sons, Timothy Eggers, and Michael (Shelly) Eggers. Twelve grandchildren, seventeen great grandchildren, and three great great grandchildren. Survived by his sisters Eleanor Emmel, Delores Christenson, Darlene (Richard) Thoreson, and Carol Eggers, sister-in-law. He is preceded in death by his wife Jean, parents and his brother Robert.

The family requests memorials to be directed to Renner Lutheran Church.

# South Dakota State Fair Champions

September 2, 2017 • Huron, SD

Report and Photos by B. Lynn Gordon

Judges: Open Show – Bill Biglieni, Brandon, MB

Hereford Special – Brady Jensen, Brookings, SD

Futurity – Andrew Schultz, Faulkton, SD

Open Show: 96 head; Junior Special, Futurity and Steers - 164 head;

2 Miniature Herefords.

## — Open Show —



**Grand Champion Bull — HPH Cruiser 1211C** sired by H/TSR Full Throttle ET, 3/25/15, exhibited by Hanson's Polled Herefords, Conde, SD and DaKitch Farms, Ada, MN.



**Reserve Champion Bull — SF Home Grown 815**, 3/20/15 exhibited by Don Stangeland, Pipestone, MN.



**Grand Champion Female — CKCC Dot 60D ET** sired by R Leader 6964, 5/3/16, exhibited by Chesney Effling, Highmore, SD.



**Reserve Champion Female and Champion 4-H Hereford Heifer — ECR/CHEZ/KRCK Dandy** sired by DKF RO Cashflow 0245 ET, 4/11/16, exhibited by Chesney Effling, Highmore, SD.

## KNIPPLING & SONS BULL SALE OFFERING SELLING 50 BULLS

Bidding Opens January 13, 2018 and Closes January 21, 2018 at 2 p.m. CST



Lot 1 - KR 1202 DOMINO 601D - 43676564



Lot 8 - KR 1202 DOMINO 623D - 43676617



Lot 9 - KR 1B CALLAWAY 625D - 43676620



Lot 40 - KR 4183 TURNING POINT 680D - 43732651

Bulls can be viewed at any time. Catalogs and video disks available.



For more information contact:

**Jerry Knippling & Sons**

Randy Knippling H: 605/293-3493 - C: 605/680-3185  
Garin Haak H: 605/293-3289 - C: 605/680-4637

[WWW.KNIPLINGCATTLE.COM](http://WWW.KNIPLINGCATTLE.COM)

Racehorse style on  
[www.TheLivestockLink.com](http://www.TheLivestockLink.com)

**The Livestock Link**

See websites for instructions.



**Champion Cow Calf — LOW KE Georgina** 5256 by MSU Xerox 20X, 1/22/15 with bull calf, ABC Chrome 725 sired by ABC Ribeye Buster 414, 03/25/17, exhibited by Rainbow Herefords, Alicia Geuther, Volin, SD.



**Reserve Champion Cow Calf — DVOR Roudy** LC Maggi sired by AH JDH Cracker Jack 26U, 03/02/15, with bull calf, Roudy 48Y 558C Rhino 743 sired by Haroldsons WLC Rhino 48Y ET, 3/4/17, exhibited by Ashlyn Roudabush, Mitchell, SD.



**Champion Futurity Heifer** — HPH 4123 Darcy 103D, 4/6/16, bred by Hanson's Polled Herefords and exhibited by Brooke Johnson, Bruce, SD.



**Reserve Champion Futurity Heifer** — Hanna Peterson, Fedora with ESF 3253 Dominette 659, 4/5/16, sired by Blacktop Timeless 3253, bred by Eggers Southview Farms.



**Champion Futurity Steer and Reserve Carcass Steer** — "Vern", 1280 lbs., by Hyalite on Target 936, bred by Rausch Herefords, Hoven, exhibited by Brayden Goehring, Herried.



**Champion Heifer Special** — Blume Angel 30D, sired by ECR Rushmore 418ET, 3/11/16, exhibited by Jayna Blume, Pierre, SD.



**Champion Steer Special** — #3978, 1245 lbs., sired by ECR Cash Flow, bred by Bones Herefords, Parker, SD and exhibited by McKenzie Gunderson, Sioux Falls, SD.



**Res. Champion Steer Special** — #3975, 1325 lbs., sired by TFR Cyrus, bred by Bones Herefords, and exhibited by McKenzie Gunderson.



**Reserve Champion Steer Futurity** — A 1,515 lb., steer exhibited by Ella Stiefvater, Salem, SD, sired by Blacktop Rolex and bred by Blacktop Farms, Mitchell, SD.



**Reserve Hereford Special Heifer** — CKCC Dot 660D, sired by R Leader 6964, 5/3/16, exhibited by Chesney Effling, Highmore, SD.



**Champion Carcass Steer** — Exhibited by Makayla Simmermon, Colton, SD. Sired by LCX Perfecto 11B ET and bred by Larry Crane, Mitchell, SD.



**Res. Champion Hereford 4-H Heifer** — BL Sweetness 688 ET, 10/14/16, sired by Full Throttle, exhibited by Brinn Begalka, Castlewood, SD.



**Schuette Sibs** — Peggy Schuette Schlechter (left), Jerry Schuette and Sheryl Schuette enjoying the South Dakota State Fair.

# BETTER HEREFORD BULLS EQUAL BIGGER RETURNS!



**HE SELLS!**



**HE SELLS!**



**HE SELLS!**



**HE SELLS!**



**HE SELLS!**



**HE SELLS!**

MANY OF OUR CUSTOMERS ARE GETTING EXTRA DOLLARS BECAUSE OF  
CROSS-BREEDING WITH **DESERT MART** HEREFORD BULLS!

**THE DESERT MART "RUN THE TABLE" SALE**  
**NOVEMBER 16, 2017** Selling 100 Bulls • 20 Top Heifer Calves

## LARGENT AND SONS

Hereford cattle since 1902

P.O. Box 66

Kaycee, WY 82639

10 miles south on I-25

e-mail: largentandsons@yahoo.com • website: www.largentandsons.com

Mark & Cathy: 307-738-2443

Mark's cell: 307-267-3229

Dave's cell: 307-267-4491

Toby: 307-267-1997

Laura: 307-267-6786

Free delivery on total purchase of \$5,000.

**2-YEAR-GUARANTEE!**

Bid at [www.LiveAuctions.tv](http://www.LiveAuctions.tv)

LIVE ON THE INTERNET. LIVE AUDIO. VIDEO BIDDING.  
**LiveAuctions.TV**

## South Dakota Hereford Association State Fair Carcass Contest — Top 10 —

First Name	Last Name	City	State	Calf ID	Live Wt	Carc Wt	Ultrasound Data					YG	% Retail Product	Retail Carcass \$
							Fat	REA	Marb	QG				
Makayla	Simmermon	Colton	SD	6128	1310	825.3	0.30	18.1	04.17	Low Choice	1.09	54.17	\$ 386.00	
Braydon	Goehring	Herried	SD	57	1280	806.4	0.31	15.4	02.80	Select	1.91	52.29	\$ 383.00	
McKenzye	Gunderson	Sioux Falls	SD	3978	1245	784.35	0.38	15.0	02.04	Select	2.13	51.79	\$ 383.00	
McKenzye	Gunderson	Sioux Falls	SD	3975	1325	834.75	0.23	14.1	02.95	Select	2.24	51.53	\$ 383.00	
Cassidy	Terwillgier	Winfred	SD	3541	1345	847.35	0.51	15.7	02.57	Select	2.47	50.97	\$ 383.00	
Delaney	Scott	Canton	SD	3544	1075	677.25	0.38	11.4	04.19	Low Choice	2.88	50.13	\$ 386.00	
Harris	Terwilliger	Winfred	SD	3542	1235	778.05	0.40	13.3	03.09	Select	2.70	50.48	\$ 383.00	
Braydan	Moe	Howard	SD	4154	1300	819	0.40	13.4	03.45	Select	2.82	50.17	\$ 383.00	
Wyatt	Brooker	Tulare	SD	3016	1365	859.95	0.37	13.1	05.03	Low Choice	3.00	49.74	\$ 386.00	
Andy	Brooker	Tulare	SD	3018	1305	822.15	0.43	13.0	04.26	Low Choice	3.04	49.67	\$ 386.00	

## South Dakota Hereford Association Member News

### SDHA Annual Meeting & Banquet

The SDHA Annual Meeting & Banquet will be held on November 10th. The Annual Meeting will begin at 1:00 pm in the Animal Science Arena on the SDSU Campus in Brookings, SD. We strongly encourage you to attend this meeting. At that meeting we will go over events for the fiscal year, presenting reports, reviewing our tax return, and electing new board members. The SDHA Banquet will be held that eve-

ning at the Days Inn. Social hour will begin at 6:00 pm. Banquet and Silent Auction will begin at 7:00 pm. Please remember to bring silent auction items as all proceeds will help fund the Heifer Grant program. Reservations can be made by calling 605-692-9471 and ask for the SDHA or SD Hereford Association block of rooms. The Days Inn does not have elevators. If this is a concern, they encourage you to request 1st floor.

### SDHA Heifer Grants

Heifer Grant applications may be accessed on the SDHA website under the Juniors tab. Applicants must be an SDJHA member and a South Dakota resident to be eligible for a grant.

The grants may be used to purchase a Hereford heifer from this year's SD Excellence Sale. This sale is scheduled to be held Saturday, November 11th in the SDSU Animal Science Arena in Brookings at 11:30 AM. This is the 30th year for the project and we encourage all youth to apply for these grants.

### SDHA Board Member Candidates

Two new board members will be selected at the Annual Meeting in November to fill vacancies left by outgoing board members, Dick Wettlaufer and Nate Frederickson. If anyone interested in running for the SDHA board of directors please contact Jeanne Johnson.

### SDHA Annual Directory

The deadline to submit ads for the 2018 SDHA Directory is November 15. Ad material needs to be submitted to Jill Hotchkiss with Hereford America, jbh@herefordamerica.com. This

will be the 70th SD Hereford directory!

### SDHA Website Banner Ads

The SDHA is offering to its members, banner ads to advertise production sales, private treaty sales, ranch, etc. on [www.southdakotaherefords.org](http://www.southdakotaherefords.org). The banner ad cost is \$350 a year and the ad will be placed on the SDHA website, Hereford America and The Livestock Link site. Please indicate with your dues billing if you would like to have a banner ad. You are responsible to get the ad info to Jill Hotchkiss at jbh@herefordamerica.com. We will once again be selling the banner for the center of the homepage at the Annual Banquet.

### Watertown Winter Farm Show

The Watertown Winter Farm Show will be held February 6, 2018 in Watertown SD. If you would like to consign to this sale and have questions, please contact Frank Redlin or Jeff Klages.

Entries are due November 20, 2017.

See the SDHA website

[www.southdakotaherefords.org](http://www.southdakotaherefords.org)

for more information or entry forms or contact Jeanne Johnson, SDHA mgr. at

605/957-5036

[Jeanne.Johnson@yahoo.com](mailto:Jeanne.Johnson@yahoo.com)

## Private Treaty Sale



### 34 Commercial Hereford Bred Heifers

Bred to Horned Hereford bulls for April calving.

These home-raised heifers have depth and ability to maintain flesh.

*If not sold by November 20 they will sell at auction at Lemmon Livestock, Inc. on December 13, 2017.*



Lester and Sharon Longwood  
605-564-2175  
11382 Haynes Rd,  
Lemmon, SD 57638  
[longwood22bar@ndsupernet.com](mailto:longwood22bar@ndsupernet.com)

## FOR SALE

### 85 REGISTERED COWS AND HEIFERS

• ANY QUANTITY •

For more information contact:

## RICK RAUSCH

Member of Rausch Herefords

15247 336 Ave, 605-447-5888 H, 605-380-0784 C  
Onaka, SD 57466 [rrs@venturecomm.net](mailto:rrs@venturecomm.net)

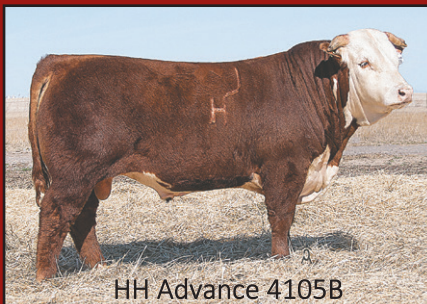
# Our commitment to you – Maternal. Efficient. Profitable. Proven.

## Selling 160 Lots:

- 85 Two-year-old Bulls
- 15 Yearling Bulls (from our 2018 National Western Carload)
- 60 Yearling Open Heifers



*Sires in our offering will include:*



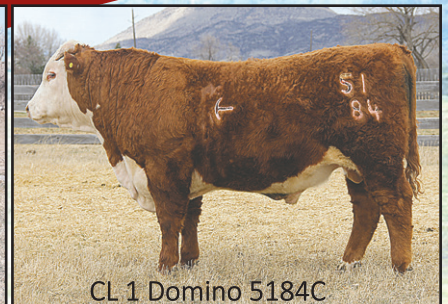
HH Advance 4105B



LCI BD 30Z Silver 319C



HH Advance 4067



CL 1 Domino 5184C

## Annual Bull and Heifer Sale:

- ▶ Thurs. Feb. 1<sup>st</sup>
- ▶ 1 pm (CDT)
- ▶ at the Ranch Sale Barn
- ▶ We've utilized the best of American and Canadian genetics for 30 years, building stacked positive traits so we can offer you these 160 unique and proven Bulls & Females.
- ▶ Bid from the seats, online or on Dish Channel 232.



John and Mary Ridder Family  
Callaway, Nebraska  
www.ridderranch.com  
mailbag@ridderranch.com  
308.836.4430 land  
402.450.0431 cell



In the pasture, at the feedlot and on the table... nothing works like a Hereford.

Home of the  
North Stars

# Minnesota State Fair Champions



**Grand Champion Heifer** —  
MAV Cotton Avery 607D ET, Tyler Lacek



**Reserve Champion Heifer** — LCC  
FBF0124 Dip n Dot 610D ET, Lamb  
Bros.



**Grand Champion Bull** — BHF 21Z Ev-  
erystorm 58C, Spencer Baker, Roches-  
ter, MN. Also Champion in Iowa.



**Reserve Champion Bull** — SPH 788  
Recharge, Shianne Teas



**Champion Cow/Calf Pair** — GHF 69A  
Crystal 8C, Jerry Gottschalk



**Reserve Cow/Calf Pair** — WPF 12Y  
80X Janessa 4053, Taylor Lacek

## Other Results:

### Jr Heifer calf

Champion: LW 11R Teagan 74E ET,  
Lance Wirth, WI.  
Reserve: BHF 84X Fairview 703D ET,  
Spencer Baker.

### Sr Heifer calf

Champion: Reed Sweetheart 6692,  
Justin Reed.  
Reserve: LH Miss Homegirl D1257,  
Wyatt Lawrence.

### Intermediate heifer calf

Champion: BHF Jasmine 614D, Steve  
Neil.  
Reserve: Lind Lil Gambler 23D, Doug  
Lind.

### Spring Yearling Heifer

Champion: LFF 170 Danica 615D ET,  
Doug Lind.  
Reserve: ECR RO Debbie 6909, Steve  
Neil.

### Spring Junior Yearling Heifer

Champion: MAV Cotton Avery 607D ET,  
Tyler Lacek.  
Reserve: LCC FBF0124 Dip n Dot  
610D ET, Lamb Bros.

### Spring bull calf

Champion: TL Homerun 1708, Taylor  
Lacek.  
Reserve: Neil 322 Catapult 714E, Steve  
Neil.

### Jr Yearling Bull

Champion: SPH 788 Recharge, Shianne  
Teas.  
Reserve: CSR A Time To Excel 612S,  
Circle S Ranch.

### Senior Bull

Champion: BHF 21Z Everystorm 58C,  
Spencer Baker.  
Reserve: TJ Demond, TJ Leo Sanftner



**Premier Breeder and Premier Exhibitor** — SMR, Scott and Melissa Runck

**Herdsmanship** - Lawrence Herefords



CONGRATULATIONS to Tyler Lacek on having the Supreme Champion 4-H  
Heifer at the Minnesota State Fair.

**L BAR W Cattle Company**  
*The Pinnacle of Hereford Genetics*

**Please join us for our  
2nd Annual Production Sale**

**March 7, 2018 in our new sale barn  
at the ranch in Absarokee, MT**

Carl Loyning • 406-328-4095 • 406-425-2484(c) • cdloyning@gmail.com

**www.lbarw.com**

## Minnesota Hereford Breeders

### Annual Meeting and Banquet

December 8  
McLeod County Fairgrounds  
Hutchinson, MN  
1:00 PM  
Social 6 PM and Banquet 7 PM  
and Elite 8 Sale  
Days Inn  
Hutchinson, MN

December 9  
Go-Pher the Purple Sale  
McLeod County Fairgrounds  
Hutchinson, MN  
Noon



- Proud Packer of Certified Hereford Beef® for 18 Years
- Ten consecutive growth years in pounds sold and carcasses certified
- More pounds per capita of Hereford Beef is sold in this region (retail and restaurants) than anywhere else in the US. Go local.



*The Best Hereford Beef Can Now Be Found Local*



Each week, we buy corn fed finished cattle primarily in this region. However, we reach beyond the strike zone to find the best Herefords wherever they might be fed in the Midwest. Even after we've concluded our normal weekly trade, we are never too full for Herefords and Baldies. We are always in the market to buy finished Herefords and we offer a \$25 premium per head for Hereford program qualifiers. If you'd like your finished calves in our Hereford program, we can introduce you to partner feed yards who custom feed or who buy Hereford and Baldie calves. Whether you want to market your feeder calves or retain ownership, let us help you direct your load lot Hereford influenced feeder cattle into our primary trade area.

**Please Contact:**

**Brad Ellefson (605) 216-6010**

*(Hereford Feeder Cattle Coordinator)*

**For All Other Inquiries Contact:**

**Head Finished Cattle Buyer**

Chris Peterson (402) 380-9616

**Welcome our **NEW!** Cattle Buyer**

Matt Bode (402) 580-4605

## Byron's Editorial...

(continued from page 1)

written by Chloe Sorvino. In a sub chapter of the article is a column called "Small Giants - Greater Omaha." The story is about the owner of Greater Omaha and *Forbes* lists him as one of the great business newcomers in the nation. Henry Davis is the owner of Greater Omaha Packing and *Forbes* lists it as one of the top slaughter houses in the country. Davis made the news recently when his 97-year-old company shipped the first box of beef to China since 2003 and the article goes on to say the deal was made with China just after China opened their 2 and half billion-dollar market to the US. Greater Omaha was one of two slaughter houses in the U.S. initially approved by China, and their beef arrived first.

In the above-mentioned article Davis, president of Greater Omaha, said he did thank President Trump and shook his hand for making the deal possible for the U.S. meat industry. Davis is quoted as saying in the article that, "he sets his limits and is wary of selling too much beef to any one customer." And last year exports accounted for just 16% of his \$1.4 billion in sales. Davis is also quoted as saying, "I am very careful how I do my sales, we don't get overdependent on any market or any raw material or any customer."

Davis who owns 100% of Greater Omaha is now worth an estimated 1 billion dollars. Davis said he has big

plans ahead in the future, but nothing will compromise his high-quality beef. Davis is also quoted in the article as saying, "We don't want gigantic customers as the big chain stores as we don't have enough beef, if they run a sale it would be too big a percentage of our product."

Greater Omaha is intentionally lean, the nation's 4 top suppliers, JBS USA Holdings, Tyson, Cargill, and National Beef Packing account for about 75% of the U.S. market in terms of revenue. Greater Omaha has 2% of the market, but it sells 700 million pounds of beef a year.

The article further states that Greater Omaha chose not to sell the big chains like Costco, Walmart and McDonalds. The approach Davis has to his cattle buyers is to be extremely choosy, and his buyers select each steer from the Hereford or Angus breeds. Greater Omaha keeps daily production at 2,400 head.

Angelo Fili, Greater Omaha's 61-year-old Vice President makes the statement that a company (not Greater Omaha), that does 30,000 head a day are going to get some cattle that are Prime and some cattle that are Select we are after the higher end stuff. Nearly all the cattle come from Nebraska and Iowa feeders. (Editor's note: But cattle are sourced from a wide area.) The article states that Nebraska, in particular, has become the preferred stocking (feeding) area for Greater Omaha.

Greater Omaha Steaks are served at some of the nation's top eateries, including Ruth Chris Steakhouses and

Wolfgang Puck Restaurants, Peter Luger, Minetta, Tavern and Marea in New York City, French Laundry in Napa Valley, just to mention a few. Greater Omaha's story starts with immigrants in search of a better life.

Herman Cohen fled the Russian Empire to American in 1905. Cohen served in the U.S. infantry in World War I and reentered civilian life with \$100 in his pocket. In 1920 he moved to Omaha and worked in the stockyards and would occasionally buy a steer as funds allowed, butcher the beef and sell the meat. The small operation grew to a few animals a day and the program later grew into today's giant. Later Cohen's youngest daughter, Florence, married Davis' father, Pennie, who joined his father-in-law's business in 1945 and the operation continued to grow from there.

Henry Davis was born in 1951, grew up in Omaha's beef industry and he spent summers at the plant doing everything from buying beef to butchering beef on the line. But by 1970 Omaha (the city) had lost its edge and slaughter houses moved to the rural areas to be closer to the feedlots, but Greater Omaha stayed in Omaha.

Davis joined the business full time in 1973 after graduation from the University of Denver, with a degree in Business and a minor in Computer Science. Davis took over as President of Greater Omaha in 1987 when the company was bringing in 130 million dollars a year in sales from about 650 cattle per day. He soon revolutionized the company by jumping on a trend that the Iowa Beef Packers (IBP) had started. IBP had invented boxed beef, with one cut of beef like loin or rib, placed in vacuum sealed packages, packed and shipped in boxes that were more manageable for a restaurant or distributor. Previously, packers only sold larger hind quarters and four quarter cuts. More butchering

meant higher prices and Davis launched a production line for boxed beef in 1992. "Most of the industry followed along, those that didn't are no longer around," Davis says.

Davis says we are a country of meat eaters, it is a spiritual experience for some people and Greater Omaha has been able to respond to their needs. They want a good steak.

The article goes on to state the slaughter house's 4,000 square foot stainless steel plant is pristine and there is no odor, the rooms have a lab like quality. Davis has turned down buying offers, including two since the trade deal with China. "I don't open that door because the plant is not for sale," Davis said.

Davis who was divorced in 2006, and has two children who do not appear to have an interest in returning to Omaha and the Greater Omaha business. Davis says he will figure out what that means to the business when the time comes, but doesn't think that will be anytime soon. "I've never enjoyed this more in my life and I'm not giving this up, you're not getting me out of here."

As stated before in the story this article, "A Cut Above" about Davis and Greater Omaha was written by Chloe Sorvino and was published in *Forbes* Magazine, October 24, 2017. I have quoted portions of that article.

This article was extremely interesting to me because of the connection with the Hereford CHB® program and Greater Omaha, and it is very typical that we don't read or hear much about the people in the forefront of these companies. I thought that you would like to know more of the story. I was told by H.H. Dickenson, former AHA Executive VP, many years ago, when CHB® had just started up, that Safeway Stores wanted the CHB® product, but the AHA was not able to meet the quantity demand by Safeway, so the program stalled.

— BB

## Jill's Editorial...

(continued from page 1)

these families have experienced over 100 or more years.

We are running a small portion of their own stories which were presented at their anniversary celebrations this summer. I know there are a number of other Hereford ranches that are 100 or over

and we will try to get others mentioned as we go along.

Our family ranch, Bayers Hereford Ranch near Twin Bridges, MT, is looking forward to its own 100th anniversary in 2018. My dad, Byron Bayers has been there almost his entire life. That's a lot of Hereford history. I enjoy hearing his stories and new ones seem to come out all the time.

Finally, be sure to read the article on the National Hereford Feedout which starts on page 14. There is some interesting information in this article and once again shows that Hereford cattle can feed and finish with the rest of them. Tom Granzow has insight on a number of other issues in the feeding industry which he addresses in this article. It's a good read. Don't miss it.

I hope to see some of you in Kansas City or down the road somewhere. Bull sale season has begun up in this neck of the woods and there have been a couple of dispersions. We have a few reports in this issue and will have more next time.

— JBH



Last month, I inadvertently renamed Dave Lamenzo's farm. It should have said, Maple Edge Hereford Farm. Dave still came all the way from Bloomfield, CT to visit the Reinhold family and meet the South Dakota Hereford tour group. Pictured are Dave (left) and Larry Reinhold.

## Going to the SD Excellence Sale Saturday, November 11 – Brookings, SD



### ESF 8Y CASSIE 725 ET

Calved 3/24/17 // P43835808 // Polled Cow  
Sire NJW 735 W18 HOMEGROWN 8Y  
Dam ESF 743 CASSIE 021  
BW 2.7, WW 52, YW 88, M 34, MG 60,  
REA .52, MRB .02, CHB\$ 25

This was a once in a lifetime flush where we got a lot of them and they are all keepers. Take advantage of the opportunity and invest in your cowherd.



### ESF 41 GLORIA 747

Calved 3/31/17 // P43812712 // Polled Cow  
Sire CSC 8Y POWELL 41  
Dam ESF 0245 GLORIA 309  
BW 2.6, WW 50, YW 84, M 29, MG 54,  
REA .30, MRB .03, CHB\$ 22

This dark red, goggle-eyed heifer comes from one of our most predictable cow families. Consistent, fertile producers you can count on every year. Her side profile is amazing. She is long as they come with a sweet front end.

**EGGERS**  
Southview Farms

More information on page 12 or give us a call.

Tim & Philip Eggers  
25748 476th Ave. • Sioux Falls, SD  
Phil's Cell: 605-351-5438  
email: ESHerefords@aol.com

# HEREFORD AMERICA™

Largest Privately Owned Hereford Newspaper in North America

*Thank you to all who attended the  
South Dakota Hereford Tour!*

ALL AD MATERIALS FOR JANUARY ISSUE MUST BE IN BY DECEMBER 5.



605/866-4495

13823 Beaver Creek Place, Reva, SD 57651

Visit us at: [www.herefordamerica.com](http://www.herefordamerica.com)

Send materials to Jill Hotchkiss at this e-mail address: [jbh@herefordamerica.com](mailto:jbh@herefordamerica.com)

## AD RATES

Size	Black & White	1 Extra Color <sup>1</sup>	4-Color <sup>2</sup>
2-Page Spread	\$1600	\$1750	\$2050
Full Page	\$950	\$1025	\$1200
1/2 Page (vertical, 2 or 3 col.)	\$525	\$575	\$675
1/2 Page (horizontal)	\$500	\$550	\$650
1/3 Page	\$400	\$425	\$525
1/4 Page	\$250	\$300	\$350M
Photos	\$5 each		\$10 each

## Van Newkirk...

(continued from page 1)

19th on the ranch at Oshkosh NE. Joe, Cyndi and family welcomed 250-300 family members, friends, neighbors and customers. Guests came from all over the US. They traveled from Texas to North Dakota and from California to Washington DC. It was a festive afternoon/evening with everyone enjoying horse and wagon rides through the coming two-year-old bulls along the scenic North Platte river, a delicious CHB tri-tips meal catered by Haythorn Ranch, and a memorable humorous skit was performed by the Van Newkirk great-grandkids reliving the 125 year history. Another highlight was the hand painted windmill fans with a pictorial history of the ranch, old time picture timeline and display of well-used ranch tools/antiques. (The Van Newkirks spent the summer digging through old barns, sheds, basements and shops to find all kinds of interesting "treasures" to paint, display and use for decorations. It's amazing what you collect over 125 years!)

The conversations were light

hearted and lively, the evening was capped off with live music and dancing under the stars. Joe and Cyndi were quite humbled by everyone who traveled so far, called, sent flowers, gifts and cards and took time out of their busy schedules to help them celebrate the 125th.

.....

Van Newkirk Herefords is a family owned ranching operation dating back to 1892, when Lorenzo Van Newkirk started mating Hereford bulls to his Longhorn cows. He tried to find the darkest red Herefords he could to get rid of the spots on the calves," Joe explained.

In 1942 A.J. (Bud) Van Newkirk started the registered herd of Herefords with the purchase of five females from Erlewine's in Ogallala, NE. Additional females were added over the years from several area breeders.

Today, the operation is managed by Joe and Kolby Van Newkirk. "This is a family operation," Joe said. "My wife and kids are just as much a part of this ranch as I am. They get right in there and help with whatever ranch work

needs to be done.

The consistency and deep quality of the herd Joe attributes to a bull that has become the backbone "We bought JV General in 1997," When I saw him, I really liked his muscle, shape and the look of his mother. We started out using him as a heifer bull," he continued. "We really liked the heifers he sired, and kept quite a few of them for cows. He is in over half of our cow herd pedigrees now. It seems like everything that has him in



The Van Newkirk celebration was well-attended with 250-300 family members, friends and neighbors joining in the activities.



The entire Van Newkirk family celebrated together for the ranch's 125th anniversary. Photos by Cathy Wright



Cyndi and Joe Van Newkirk

their pedigree is heavy milking. He ended up being more of a foundation sire.

The Herefords suit our climate, and they do well for what feed we have available, so we have no reason to change. Since his grandfather and great-grandfather managed the operation, Joe said there have been some changes over the years. These days, they use a lot more technology on the family operation. "We still work cattle on horseback," he said. "We do a lot

of other things the same, too. But, we use ultrasound to collect carcass data. We AI and do a little embryo transfer. We also work harder to gather EPDs on our cattle. I think all of this information helps us put our finger on the cows that are not producing as well as they should, and allows us to cull them more efficiently," Joe said.

"Our business has really grown over the years, and we have built the backbone of this operation on our repeat customers. They make us successful,"

# 70th South Dakota Hereford Directory

## Ad Materials Due by Nov. 15

The 2018 South Dakota Hereford Directory will be printed in December, ahead of most of the production sales. Adherence to the ad deadline of November 15th is important in order to get the book published on time. Memberships have to be paid by on time to SDHA manager Jeanne Johnson in order to be in the membership listing. Advertising is open to anyone. SDHA members get a reduced advertising rate in the directory.

Premium pages such as the back page, center spread, inside front, inside back, etc., will be auctioned at the SDHA Banquet in Brookings, SD on November 10. If you are unable to attend and would like to bid on a page please contact Jill Hotchkiss.

### AD RATES:

	SDHA MEMBER	NON-MEMBER
Full page	\$275	\$325
2/3 page	\$190	\$225
1/2 page	\$150	\$175
1/4 page	\$90	\$100
1/8 page	\$45	\$50
Photos: \$5 each, black and white / \$10 each 4-color		
COLOR RATES: 1 Standard color: \$35.00 plus \$5 per photo (B&W)		
4-Color: \$100 plus \$10 per photo		

### CONTACT:

Jill Hotchkiss • 605/866-4495  
jhb@herefordamerica.com  
13823 Beaver Creek Place, Reva, SD 57651

**Premium Pages  
Will Be  
Auctioned at  
SDHA Banquet  
NOVEMBER 10**





# GIBSON HEREFORDS

## *Complete Dispersal at Private Treaty*

### **A LINE ONE HERD**

*Registered Herefords since early 1940s*

52 Young Bred Females

18 Bred Heifers - 2016

21 Two-Year-Old Bred Cows

13 Three-Year-Old Bred Cows

**& 35 Open Replacement Heifers**

*All Ultrasounded with Jan.-March calving.*

*Line One sired, Line One bred.*



★ 45 Older cows have been sold to one buyer

### **HERD SIRES FOR SALE:**

CL 1 Domino 003 (43082195)

*Full possession, Plus 250 units semen*

*Sire of 1/2 of the Bred Females offered. A fabulous sire of top mother cows.*

HH Advance 2092Z ET (43270844)

*Full possession, Plus 450 units semen*

R 9141 Northstar 19A (43398442) *Full possession*

G L1 Domino 618D (43715041) *Service sire of bred heifers.*

*Full possession*

### **Semen Interests:**

HH Advance 4082B ET (43470127)

*Owned with Jamison, B&B Herefords and Holden Herefords.*

1/4 semen interest available.

G L1 Domino 619D (43715044) *Owned with Jamison Herefords.*

1/2 semen interest available.

CL 1 Domino 166 (19204239) — *Plus 160 units semen*

1/4 semen interest available.



# GIBSON HEREFORDS

Larry & Karen Gibson • Wallace, Nebraska

*Contact for pedigree info & pricing:*

Art Handel • 605/391-8233 • handelhereford@aol.com

or Tracy Sachtjen • 402/366-3230

# Schafer...

(continued from page 1)

of the Lucas farm. Their eldest son, Henry, married Francis Lucas in 1925 and they began farming near the Schafer farm. Their first son, Lester was born in 1926. Shortly thereafter, Henry was diagnosed with tuberculosis. He moved to the sanitarium near Granite Falls, MN and Frances and Lester moved in with the Klucas family. Henry and Frances added another son, Robert, to their family. By 1933, Henry was nearly recovered from tuberculosis when he died suddenly from a ruptured appendix.

Thus, the Klucas household in the 1930s consisted of John and Mary, son Emmet and a daughter Frances with her two sons, Lester and Robert. Art and his family lived on the other Klucas farm a mile south and Gladys taught school in the Plato, MN, area but was frequently home.

In 1940 Gladys married Henry's younger brother, John Arthur Schafer, nicknamed Art. They purchased a farm five miles southwest of the Klucas farm. Four children, David, Daniel, Marie and Burton were added to their family in the next few years.

Lester graduated from high school in 1944 and worked on the farm until the fall of 1945 when he was drafted into the Army. He served overseas in Germany in the Army of occupation and thanks to the G.I. bill became the first Schafer or Klucas to attend college

when he enrolled in the University of Minnesota in 1947. He graduated with a degree in Animal Husbandry in 1951.

John Klucas had died in 1946 and Art Schafer died suddenly, shortly thereafter. The Klucas farms were run by Art and Emmet with help from Robert who graduated from high school in 1948 and worked at home until he enrolled at the University of Minnesota in the fall of 1949. Gladys Schafer rented out her farm and resumed teaching in Fairfax, MN. When Lester returned home, he rented Gladys' farm while sharing labor and equipment with Emmet.

In 1952, Robert married Carol Nelson, graduated from college and became a 4-H agent in Nobles County in southwestern Minnesota. Soon after he was hired as Ag Agent in Lyon County. On January 1, 1956, he became the manager of the Schermerhorn Farms/Oxley Ranch in northwestern Minnesota. They have lived there ever since. The Schermerhorn/Oxley Ranch genetics have been an important part of the Schafer herd since 1958. They have five children: Barb, Don, Ron, Mark and Jean. Barb lives in Watford City, ND; Don has been employed at Harrell Hereford Ranch in Baker City, OR since the Oxley dispersion; Ron still works for Oxleys. He and his wife Cindy live across the road from the Oxley headquarters. Mark and his wife Nola ranch at Flasher, ND; Jean and her husband Eric live in suburban Pittsburgh.

(continued on page 40)



Lester Schafer (left) and son John welcomed the crowd. Lester's brother Bob looks on.



Jack Ward, executive vice president of the American Hereford Association congratulated the Schafer family on their milestone.



Kent Heins, president of the Minnesota Hereford Breeders commended the Schafer family on their years of dedication to the breed.

## Sale Results...

**Remitall West Production Sale**  
**October 14, 2017**  
**Olds, AB**

**Auctioneer: Ryan Dorran**

**11.25 Bull Calves — \$4,667**  
**7 Heifer Calves — \$4,200**  
**Cows - 2 half interests — \$24,500**  
**4 Cow/Calf Pairs — \$7,512**  
**6 Yearling Heifers — \$6,417**  
**6 Embryo Lots — \$2,817**  
**29 Total Lots — \$7,100**

### Top Selling Cows:

Lot 15, Remitall-West Yellow Rose 2Y by SHF Rib Eye M326 R117 to Kevin



**Sale Topper** — Lot 15, Remitall-West Yellow Rose 2Y sold to JK Fraser Cattle Cochrane, AB, \$25,000 for 1/2 interest.

and Joanne Fraser, JK Fraser Cattle, Cochrane, AB, \$25,000 for 1/2 interest. Lot 35, Remitall-West Rita ET 25A by SHF Wonder M326 W18 ET to KJ Fraser Cattle, \$24,000 for 1/2 interest.

### Top Yearling Heifers:

Lot 28, Remitall-W Brown Sugar 158D by Remitall-West Moondance ET 40B to Harvie Ranch, AB, \$14,000. Lot 29, Remitall-W Nola 150D by Remitall West Moondance ET 40B to Medonte Highlands, ON, \$8,500.

### Top Bull Calves:

Lot 1, Remitall-W Connected ET 24E by Remitall-W 50 Shades ET 12C to Chris and Tina Lees, C&T Cattle Co., SK, \$10,000 for 1/2 interest.

### Top Heifer Calves:

Lot 17, Remitall-W Marvel ET 13E by KCL WPF The Professor 7110 ET to Smith Farms, BC, \$10,000.



Mass transit to the heifer pasture.



Display of Schafer memorabilia including an original painting of LJS Mark Domino 0125 by Bud Snidow, pictures of herd bulls and memorable cows.

# JAMISON HEREFORDS

FALL BREEDERS & RANCHERS

## FEMALE SALE

FRIDAY **DECEMBER 1, 2017**

Jamison Ranch Sale Center • Quinter, KS

**300 HERD BUILDING FEMALES**

100 Registered Jamison Line 1 Herefords

60 Spring Bred Heifers • 40 Fall Pairs

200 Comm'l Hereford / Black Baldie Bred Heifers

SINCE 1944 ...73 Years of  
Hereford Leadership!

**DVAuction**  
Broadcasting Real-Time Auctions

### A COWMAN'S PROGRAM...

Linebred Line 1 • Trait Balanced • Maternal is #1 • Functional, Efficient  
Mother Cows • Range Raised • Commercial Industry Proven!

### 200 COMMERCIAL BRED HEIFERS HEREFORDS & FI BLACK BALDIES

A.I. bred, Connelly Comrade ...Select Sires' CE & Carcass Value  
leader • Calve Feb. 1 • Jamison Line 1 genetics



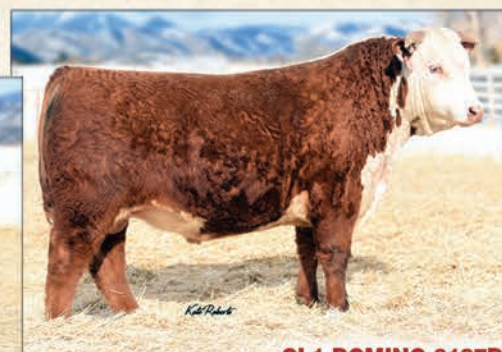
**JA Herd Builder Heifers backed by  
generations of quality, Line 1 performance  
and great mother cows!**

### POWERFUL, YOUNG A.I. SIRES... CE, Performance, \$CHB Leaders!



**CL1 DOMINO 6163D**

CL1 Domino 215Z x CL1 Domino 7110T  
CED **3.2** BW **1.7** YW **101** MILK **34** \$CHB **34**  
CE, \$CHB ...Total Trait Beef Bull ...Top 5% 8 Traits!



**CL1 DOMINO 6187D**

HH Advance 4067B x CL1 Domino 215Z  
CED **3.4** BW **2.6** YW **106** MILK **30** \$CHB **40**  
Multi-Trait, \$CHB Leader ...Top 10% 12 Traits!

### JAMISON HERD BUILDER SIRES ...Daughters sell!



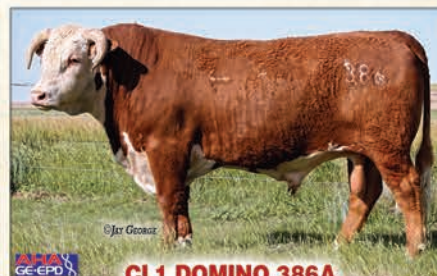
**HH ADVANCE 2181Z**

Powerful, Potent Performance  
...Elite Maternal Pedigree!



**HH ADVANCE 4082B**

Power, Complete, Hi-Performance Beef Bull



**CL1 DOMINO 386A**

Superb CE, Maternal, Carcass EPDs  
...Landmark Cow Family!



**CL1 DOMINO 9125W**

Cowman's 5-Trait Leader ...Cowherd Builder!

**GORDON JAMISON 785/754-3639** 2271 County Rd. 74 • QUINTER, KS 67752 • **www.jamisonranch.com**

**UNITED LIVESTOCK BROKERS, INC.** • Jay George 605/391-6230 • Lebo, KS

## THE BEST IN LIVESTOCK VIDEOS &amp; VIDEO SALES

# The Livestock<sup>TM</sup> Link

Call Marc to set up  
your next sale:  
605/490-1513

*Using the biggest high-definition TV screens in the business.*

## Livestock Videoing, Video Sales, Online Sales and Sale Clerking Services



### Cattle and Horses *plus other livestock and real estate*

#### VIDEO SALES

- ▶ Using the biggest high-definition TV screens in the business.
- ▶ Full service or video only
- ▶ Options available.

#### CLERKING

- ▶ Full clerking services with detailed reports including sale summary, sire reports, insurance reports, load out and more.

#### LIVE INTERNET SALES & BIDDING

- ▶ Live internet sales with full feature bidding. For more information or assistance please contact Aaron Friedt at 701/590-9597 or E-mail: [aaron@TheLivestockLink.com](mailto:aaron@TheLivestockLink.com).



# The Livestock<sup>TM</sup> Link

THE BEST IN LIVESTOCK VIDEOS & VIDEO SALES

13823 Beaver Creek Place, Reva, SD 57651

[www.thelivestocklink.com](http://www.thelivestocklink.com)

Contact us if you have questions.

Marc Hotchkiss - 605/490-1513 • 605/210-1956  
[marc@TheLivestockLink.com](mailto:marc@TheLivestockLink.com)

Phil Eggers - 605/351-5438  
[phil@TheLivestockLink.com](mailto:phil@TheLivestockLink.com)

**Inquire about the total package ... videoing, video sale, online and clerking.**

## AUCTIONEERS

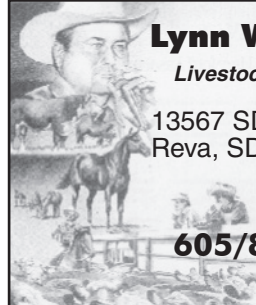
### BALOG Auction Services, Inc.

Box 786  
Lethbridge, Alberta T1J 3Z6  
Canada  
(403) 320-1980  
1-877-320-1988  
Fax: (403) 320-2660  
www.balogauction.com



### DALE STITH Auctioneer

5239 Old Sardis Pike  
Mays Lick, KY 41055  
  
cell 918-760-1550  
dalestith@yahoo.com



### Lynn Weishaar Livestock Auctioneer

13567 SD Highway 79  
Reva, SD 57651

**605/866-4670**

### Seth Weishaar

Livestock Auctioneer

Bringing purebred & commercial cattlemen together.

◆ Purebred

◆ Commercial

11639 Snoma Rd.  
Belle Fourche, SD  
57717  
(605) 210-1124  
(605) 892-2640



## ARKANSAS

### Moon Herefords

www.moonherefords.com

Canadian and Carpenter-Williams Genetics

A total Performance Program  
producing practical/efficient  
Horned Herefords for a practical world.

Harrison, Arkansas  
pamoon@windstream.net  
870-743-5003 (O)  
870-715-7244 (C)



## AUCTION BARN

### LEMMON LIVESTOCK, INC.

Box 477

Lemmon, South Dakota 57638

Phone 605-374-3877  
or 1-800-822-8853

Paul Huffman, General Manager • 605-645-2493  
Chad Hetzel, Assistant Manager • 701-376-3748

• Sales Every Wednesday •

We feature  
Hereford & Hereford-X Cattle in Special Sales  
www.lemmonlivestock.com

## CALIFORNIA

### Line 1 PEDRETTI DOMINOS



1975 E. Roosevelt Rd.  
El Nido, CA 95317

Gino & Mona Pedretti (209) 756-1609  
Mark St. Pierre (209) 233-1406  
Gino Pedretti Jr. (209) 756-2088

### Schohr Herefords

P.O. Box 391 • Gridley, CA 95948

Carl & Susan: 530-846-4354

Steven & Joseph: 530-864-2855

E-mail: ricencows@schohr.com



Selling bulls and heifers  
by private treaty.  
Contact us for semen.

## CANADA

### BAR PIPE Hereford Ranch

Generation after generation, same trusted brand.

Jay Cross: (403) 978-2767  
Doug Finseth, Mgr.: (403) 938-7726

Okotoks, AB

www.barpipes.com



Brad & Veronica  
Doenz  
(403) 642-3894

E-mail: doenzb@gmail.com  
www.doenzranches.net

PO Box 362, Warner, AB T0K 2L0  
3.2 km E of Warner on #504 & 3.2 km N on Rg Rd #170

Sale: Dec. 7, 2017 @ 1 p.m. at the Ranch

### Hills Galore

Stock Farms

ABBEY, SASKATCHEWAN

Alvin and Mary-Kate  
Pawlitza  
Julia, Alex  
and Georgia

Tel | 306/689-2597  
Email | mk@hillsgalore.com  
Web | www.hillsgalore.com  
Mailing Address | Box 179, Hazlet, SK S0N 1E0

### Lilybrook Herefords, Inc.

Practical, Efficient Cattle Are Our Livelihood!

Andy Schuepbach

Box 2044

Claresholm, AB, Canada

T0L 0T0



Phone: 403/625-4693 • Cell: 403/625-6316  
Fax: 403/625-1500

andy@lilybrookherefords.com  
www.lilybrookherefords.com

4 3342 Millar Ave  
Saskatoon, SK S7K 7G9  
Ph: 306-933-4200  
Fax: 306-934-0744  
info@tbarc.com  
www.buyagro.com

CHRIS POLEY: 306-220-5006  
TED SERHIENKO: 306-221-2711  
SHANE MICHELSON: 403-363-9973  
BEN WRIGHT: 519-374-3335

## ULRICH

HEREFORD RANCH INC.  
"Performance Tested Herefords"

Hans Ulrich Peter Ulrich  
(403) 625-2237 Cell (403) 625-1036

Email: peter@ulrichherefords.com  
Website: www.ulrichherefords.com  
Box 843, Claresholm, AB T0L 0T0  
From Claresholm, 8 mi. (12.8 km) E, 4 mi. (6.4 km) N, 1/4 mi. E.

THANK YOU FOR ATTENDING THE  
SOUTH DAKOTA  
HEREFORD TOUR!

www.southdakotaherefords.org

## COLORADO

### Ernst Herefords

Marshall Ernst Family  
Windsor, CO 80550  
970-381-6316  
www.ernstherefords.com

Bull Sale • March 31, 2018 • 1 p.m.  
at Shamrock Livestock • O'Neill, NE

High Altitude  
PAP Tested  
Since 1980 at 8,000 ft. +

MIKE FUCHS  
HEREFORDS

3673 Co. Rd. 14  
Del Norte, CO 81132  
Mike 719/657-2519

• Annual Sale Dec. 2, 2017 •  
mikefuchsherefords@gmail.com

E-mail: jbh@herefordamerica.com  
or phone 605/866-4495

38th  
ANNUAL SALE  
Tuesday,  
Oct. 17, 2017  
800-351-5362

970-878-5362 • 970-270-4445 cell  
Mary Strang & Family  
2969 County Road 8 • Meeker, CO 81641  
strangherefords@gmail.com  
www.strangherefords.com

## IDAHO

Shaw Cattle Co.  
22993 Howe Rd.  
Caldwell, ID 83607  
www.shawcattle.com

Greg: (208) 459-3029  
Sam: (208) 880-9044  
Tucker: (208) 899-0455  
Ron Shurtz: (208) 431-3311

THE BULL BUSINESS BRAND<sup>SM</sup>  
ANGUS HEREFORD RED ANGUS

Neal Ward  
673 N. 825 W. • Blackfoot, ID 83221  
(208) 684-5252

HERD SIRES:  
Remital Online 122L • TDP Eldorado  
WSF Home Schooled • Mr. Hereford

Johnson  
Herefords

Since 1918  
Registered Horned & Polled Herefords  
Jack & Lynne Johnson  
2165 240th St.  
Milford, IA 51351  
Jack: 712-260-3650 • Lynn: 712-330-7470

## IOWA

Good Doin' Genetics

## WIESE & SONS

Bulls, Females, Semen  
Now in our 100th year of producing top Herefords

P.O. Box 305  
Manning, IA 51455  
712-653-3678  
www.wieseandsons.com

# Hereford America



Hurry!  
Don't be late!

Ad Deadlines are the 5th of the preceding month.  
Next one is December 5 for the January issue.

Call 605/866-4495 or e-mail  
jbh@herefordamerica.com

## ILLINOIS



**Baker Farms**  
1278 E. 20th Rd. • Streator, IL 61364  
Fred • Debby  
Sarah • Susan • John  
Phone: (815) 672-3491 • Mobile: (815) 257-3491  
Fax: (815) 672-1984

*Superior Hereford Genetics*

**LOEHR HEREFORD FARM**  
P.T. "Pete" Loehr  
113 W. Northgate Rd  
Peoria, Ill. 61614  
309/692-6026 or 1-800-937-BEEF

*- The Best of the Best -*  
Line One, Canadian & Pure Gold

QUALITY &amp; PERFORMANCE SINCE 1919



**Milligan Herefords**  
481 Church Rd  
Kings, IL 61068

JAMES (815) 562-4946    ROBERT (815) 562-6391    MALCOLM (815) 562-5879  
(815) 761-1523

**STEPHENS HEREFORD FARM**  
STEPHENS TRAILER SALES  
*Eby aluminum livestock*

P.O. Box 168 • Taylorville, IL 62568  
Mark Stephens  
217-825-7913 Cell  
mark\_stephens46@yahoo.com  
Danny Stephens, Trailers • 217-824-2815

## LIVESTOCK EQUIPMENT



PORTABLE & STATIONARY LIVESTOCK EQUIPMENT  
**FAWCETT ENTERPRISES, INC.**  
36111 211th Street ~ Miller, SD 57362-6814

For More Information Contact:  
**RANDY FAWCETT**  
Phone 605/853-3930 • Cell 605/461-9346 • Fax 605/853-3310

**CUSTOM DESIGNS AVAILABLE**

www.herefordamerica.com

## Hereford America

North America's Largest Privately Owned  
Hereford Newspaper.

Call 605/866-4495 for more information.  
or E-mail: jbh@herefordamerica.com

www.herefordamerica.com

## KANSAS



**Alexander Farms**  
**Polled Herefords**  
LINEBRED KING DOMINOS

John Alexander Family  
2756 S. Donmyer Road  
Gypsum, KS 67448-9414  
Home: (785) 536-4931  
alex farms@eaglecom.net  
facebook.com/alex farmsbeef

— Breeding Stock, Semen & Flushes For Sale —



and  
**BERAN BROS.**  
**ANGUS**  
**HEREFORDS**


1350 NE 100 Ave.  
Claflin, KS 67525

Craig Beran, Jr. 620/587-3709  
Gerald Beran, Jr. 620/587-3407  
620/786-9703 (cell) 620/786-9569 (cell)

Sale March 19, 2018  
\*CATTLE FOR SALE AT THE RANCH\*

**BTS HEREFORDS**

**Bruce & Tracy Schlickau**  
14601 South McNew Road  
Hutchinson, KS 67501  
Phone: 620-459-6576



Location: 5 miles south of Hwy 96 & 14 jct.  
1 mile east, then 3/4 mile south

**Quality Herefords by private treaty sales**



Registered  
Herefords  
SINCE 1965


**DAVIS HEREFORDS**  
Dean & Danny

(785) 256-4643 • (785) 256-4010

29111 Keene Eskridge Rd.  
Maple Hill, KS 66507  
13 miles west of Topeka on I-70.  
3 miles south on Exit 342.

**Deewall Family**

Mike Herefords  
1074 Hwy. 1  
620-635-6511  
Mike & Jane  
Deewall



Coldwater, KS 67029  
620-635-5978 (cell)

www.deewallherefords.com

**4V RANCH DOUTHIT HEREFORDS**

**4V Ranch** 600 S Lorraine St  
St. Francis, KS 67756



**MARGO DOUTHIT**  
(785) 332-2323  
Cell 332-4240  
4vranch1@gmail.com  
4vranchdouthitherefords.com

**Bulls & Heifers For Sale**

**Douthit Herefords**  
Walter, Megan & Chuck

**Douthit-Downey Land & Cattle, LLC**  
Megan's cell (785) 332-8575  
Chuck's cell (785) 332-4034

1805 RS 115  
St. Francis, KS 67756  
www.douthitherefords.com  
megan@douthitherefords.com

**FLORY POLLED HEREFORDS**

Mike Flory & Family  
618 E. 800 Rd.  
Lawrence, KS 66047  
785/865-3444 • 785/979-3984  
mike.flory@sbcglobal.net  
JB Trojan & Polled LI

Performance tested since 1979.  
Functional cattle with multi-trait performance.



FOR ALL YOUR NEEDS IN HEREFORD CATTLE  
IN KANSAS AND SURROUNDING STATES

**THE KANSAS HEREFORD ASSOCIATION**  
Tom Granzow, Secretary-Manager  
765 South 3000 Road  
Herington, Kansas 67449  
785-466-2247 785-466-2226 (FAX)  
kansashereford@tctelco.net  
www.kansashereford.org

**Gustafson Herefords**  
Gus, Deb and Shelbi Gustafson

7477 Davis Creek Road  
Junction City, KS 66441  
785-238-7306

I-70 exit 303... 7 miles South

**Visitors Always Welcome**

**Granzow Herefords**  
Tom, Mary & Tobyn Granzow  
765 South 3000 Road  
Herington, KS 67449  
785/466-2247 or 785/466-6438  
www.granzowherefords.com



MEMBER OF THE PTP ALLIANCE

**FRANK HUG & SONS**

Bulls & Females  
For Sale Private Treaty

H 2556 W. 125th Street H  
Scranton, KS 66537


Bob Hug 785/230-0434 Ed Hug 785/230-7597  
fhug-sons@excite.com

**JENSEN BROS.**  
**Jensen Livestock Agency**  
Kevin & Sheila Jensen  
P.O. Box 197 • Courtland, KS 66939  
785-374-4372  
Kevin: 785-243-6397  
jensenks@courtland.net  
www.jensenbros.net

Online Frozen Genetics Sale: Oct. 9, 2017  
Annual Bull Sale: March 1, 2018  
**See us for your next herd sire!**

**MALONE Hereford Farm**

1371 Road F  
Emporia, KS 66801  
Phone: 620-342-7538  
Alton's Cell: 620-794-2358  
ammalone@lcwb.coop



Alton, Marie, Brian, Dustin and Michelle Malone



**MEITLER**  
1237 N. 13th Rd  
Lucas, KS 67648

Gene: 785/658-5612  
heartlandhay@wilsoncom.us  
Darris: 785/658-5208  
Clint: 785/658-7028  
www.meitlercattle.com

**MILL CREEK RANCH**  
20635 Hessdale Rd  
Alma, KS 66401  
David Breiner (785) 449-2841  
David cell (785) 456-4790  
Chad Breiner (785) 564-2091  
Ryan Breiner (785) 207-3070

www.millcreekranh.com  
millcreekranh@embarqmail.com

Production Sale Last Tuesday in February  
MANHATTAN, KS

"Best of Both Worlds Sale" • 4th Mon. in March  
12 noon at the ranch • Dwight, KS

70 Hereford Bulls  
60 Angus Bulls



Also selling  
70 F-1 Black Baldy heifers  
with calves,  
75 Fall bred heifers  
20 Quarter Horses

Jan: 785-482-3383 • Arden: 785-466-1422  
Box 8, Dwight, KS 66849  
E-mail: jakoleenbros@tctelco.net  
www.oleenbrothers.com



**Sandhill Farms**  
**Registered Polled Herefords**  
Kevin, Vera & Tyler Schultz  
2408 280th Ave., Haviland, KS 67059  
Phone: (620) 995-4072 • Cell: (620) 546-4570  
Tyler Cell: (620) 546-1574  
e-mail: kevin@sandhillfarms.com  
website: www.sandhillfarms.com  
Sale March 30, 2018

**Schlickau Herefords**  
Since 1913  
Cattle for Sale Private Treaty

Lois  
James and Charlene  
H: 620/465-2691  
Cell: 316/734-3700  
schlickauranch@gmail.com

H: 620/465-7749  
14506 S. Victory Rd.  
Haven, KS 67543  
schlickauhd@embarqmail.com

**SMITH CATTLE**



Reg./Com. Polled Herefords  
Redfield, Kansas

Farm: 620/756-4138 • Cell: 620/365-1737

# MINNESOTA

**BELL'S RAWHIDE RANCH**  
Horned & Polled Herefords  
F1 Baldy Heifers  
**Quality Cattle & Horses**  
6006 76th St. SW  
Motley, MN 56466  
Roy & Tammy Bell  
(218) 397-2579  
cell (218) 296-1960  
2.5 miles East of Leader

**CARLSON FARMS**  
CF  
1470 10th St. N.E.  
Murdock, MN 56271  
rbmrc1@gmail.com  
Ross, Beth, Mallory, Regan 320-366-3726  
Rob, Jean, Brett, Bailey, Brook 320-366-3970

**Dakitch Hereford Farms**  
David, Lorie, Michael & Mason Kitchell  
Matthew & Darci Kitchell  
3471 State Highway 200  
Ada, MN 56510-9260  
**Quality, Performance Cattle For Sale**  
www.dakitchfarms.com 701-799-7690  
dakitch@arvig.net Visitors Always Welcome

**Delaney Herefords**  
Jerry & Shelly Delaney  
2071 Co. Rd. 101  
Lake Benton, MN 56149  
Home: 507/368-9284 • Cell: 507/820-0661  
jdh@delaneyherefords.com  
www.delaneyherefords.com  
**Cattle for sale at all times.**

**DOSE FAMILY HEREFORDS**  
Building a family tradition on maternal cow power  
Allan & Joleen Dose Family  
Arlington, MN 55307 C: 320-583-8002  
allandose@frontiernet.net  
www.dosefamilyherefords.com

**JIM, JERI, JODY, JAIME HANSON HEREFORDS**  
37590 110th St  
Comfrey, MN 56019  
507.877.3631  
jerihanson@hotmail.com  
Jim's Cell 507.829.6756 • Jeri's Cell 507.828.2211  
Jody's Cell 507.276.8577 • Jaime's Cell 507.276.8237

**JMF Herefords and Sim-Angus**  
ANNUAL BULL SALE,  
FIRST SATURDAY IN FEBRUARY  
Jared, Makayla, Jaelyn, Tayton and Ty Flower  
Holloway, MN  
Jared: 320-413-0483 www.jmfherefords.com  
Makayla: 605-690-6050 jmflower.11@hotmail.com

January is the next issue of Hereford America  
**Hereford America**  
605/866-4495  
www.herefordamerica.com  
jdh@herefordamerica.com

**Jones Farms**  
Dave & Susan Jones  
31490 E. State Hwy. 112  
LeSueur, MN 56058  
(507) 665-3962  
(507) 317-5996 cell  
**Breeding Stock For Sale**  
Bulls, Heifers, Club Calves,  
F1 Baldy Heifers

**KLAGES HEREFORDS**  
Quality seedstock for sale  
Jeff & Mary Klages  
64090 410th St  
Ortonville, MN 56278  
ph/fax (320) 273-2163  
jmkklages@fedtelnet.net

**Kroening Black Herefords**  
DNA Profiled - Performance  
Registered Black Herefords  
Richard and Julie: 218-435-1223  
Mike & Bridget: 218-230-1173  
Fosston, MN  
juliek@gvtel.com

**Krogstad Polled Herefords**  
Les Krogstad 3348 430th St. Fertile, MN 56540 (218) 945-6213  
Darin Krogstad 16765 Welch Shortcut Welch, MN 55089 (651) 485-0159  
(218) 289-5685 (cell)  
les@krogstadpolledherefords.com  
www.krogstadpolledherefords.com

**Lawrence Herefords**  
Since 1957  
2477 N.W. Main St. • Coon Rapids, MN 55448  
Cattle at Princeton, MN  
**Bulls & Females For Sale**  
Doug & JoAnn (763) 755-4930  
Bryan & Marytina (763) 389-0625  
Bradley & Brigitte (612) 720-1311  
E-mail: joannlawrence8@msn.com

**Lind Polled Herefords**  
Since 1958  
• Dan • Erika • Susie • Judy •  
Contact: Dan Lind  
200 E. Grove St.  
Rushford, MN 55971  
(507) 864-2298  
cell: (507) 458-2080  
e-mail: Lind2@acegroup.cc  
Visitors Always Welcome

**The Livestock Link**  
For All Your Livestock Video Needs  
Call Marc Hotchkiss  
605/490-1513

**Lost Meadows Farm**  
Registered Polled Herefords  
Shawn & Dawn 36860 Rethwisch Lane Frazee, MN 56544 218.334.4045  
Dave & Rhonda Eckert 18513 405th Ave Frazee, MN 56544 218.334.5732

**Polled Herefords • Sales**  
**McIver's Happy Acres**  
David, Maryln, Scott and Tom McIver  
15624 340th Ave. Phone: 320-283-5776  
Farwell, MN 56327 Fax: 320-283-6044  
mcivers@runestone.net  
www.mcivershappyacres.net

**Nelson Polled Herefords**  
Phil • 507-629-3375 1616 Co. Rd. 11 Tracy, MN 56175  
Will • 507-626-0239  
E-mail: wnelson@westtechwb.com  
Herd Bulls  
NPH Active in L III TFL X651 Tested 1616ET  
EF Beef P230 Frank B497  
T.P.R. EFBeef U248 Fellis A246  
GENESEEK NPH Tender 10 Domino 428  
NPH Tender 6 Domino 407  
Proud to be a Hereford Breeder

**Minnesota Hereford Breeders**  
Secretary/Treasurer  
Kory and Michele Kruse  
2075 51st St.  
Ellsworth, MN 56129  
507-920-5474  
kmkruse96@gmail.com  
minnesotaherefordbreeders.com

**"Quality" not "Quantity" Hereford Cattle**  
**Schmidt Herefords**  
Pipestone, MN 56164  
John A. Schmidt 787 70th Ave. (507) 825-2383 cell: (507) 215-1037  
John E. Schmidt 905 7th St SW (507) 825-2786 cell: (507) 215-1174

Ad Deadline for January issue is Dec. 5.  
**Hereford America**  
605/866-4495  
www.herefordamerica.com  
jdh@herefordamerica.com

**SPRINGWATER SPH Polled Herefords**  
Chad, Lacey, Easton & Michoen Williamson Pipestone, MN 507/825-5766 507/215-0817 springwater@svtv.com  
Troy Williamson Garretson, SD 507/597-6221 605/254-7875 twilliamson@alliance.com.net

**SCHAFFER HEREFORDS**  
**Lester & John Schaffer**  
FOR SALE:  
64664 170th St. Bulls  
Buffalo Lake, MN 55314 Females  
(320) 833-2050 Semen  
(320) 582-1458 John cell  
(320) 582-0489 Les

**Walsh Family Herefords**  
Tom and Lisa Walsh  
705 100th St. SE, DeGraff, MN 56271  
Home: 320-875-3073, Cell: 320-760-2607  
tom.walsh@riverviewllp.com  
Bull Sale in the Spring with our partners, Starmak, from Tea, SD.  
We sell a few select females private treaty.

**Inquire about the total package ... videoing, video sale, online bidding and clerking.**

**The Livestock Link**  
THE BEST IN LIVESTOCK VIDEO PRESENTATION

Contact us if you have questions.

Marc Hotchkiss - 605/490-1513 cell • 605/210-1956 cell

marc.hotchkiss@gmail.com

13823 Beaver Creek Place, Reva, SD 57651

www.thelivestocklink.com

## MONTANA



Byron Bayers  
248 Bayers Lane  
Twin Bridges, MT 59754  
(406) 684-5465  
bayers@3rivers.net



**Private Treaty Sales**  
www.beeryherefords.com  
*Eastern Montana's finest Herefords*  
~ Horned & Polled ~ Matt & Krista  
Joanne 406/773-5721  
406/773-5710 cell 406/979-5720  
Also selling Red Angus bulls & females

## DALLAS POLLED HEREFORDS

Don Dallas  
Box 532  
Canyon Creek MT 59633  
406/368-2244 Ranch  
406/443-5110 Office

"Mountain Raised Performance Cattle"

## DUTTON HEREFORDS



190 Sunnyside Ln.  
Gold Creek, MT 59733  
Dean (406) 288-3330  
Cell (406) 240-8014

Registered bulls and commercial  
bred heifers for sale.



Jay-De  
Arvid & Linda (406) 671-7149  
(406) 895-2657 Lorrie  
(406) 765-7068 cell (406) 765-8219  
Box 292 • Plentywood, MT 59254



Mark, Della, Lacey & Jane'a Ehlke  
PO Box 178 • Townsend, MT 59644  
Mark: 406/439-4311 • Della: 406/439-4300  
www.ehlkeherefords.com

## FEDDES Herefords

www.feddes.com  
TFeddes@msn.com

Dan (406) 284-6810 • cell 570-1602  
Tim (406) 284-6990 • cell 570-4771  
Marvin

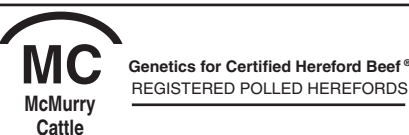
2009 Churchill Road  
Manhattan, MT 59741-8122

## Hereford America

North America's Largest Privately  
Owned Hereford newspaper

Hereford news from around the  
region. The publication that is read  
from cover to cover.

www.HerefordAmerica.com  
jhb@herefordamerica.com



Genetics for Certified Hereford Beef®  
REGISTERED POLLED HEREFORDS  
Fred, Doreen and Rebecca McMurry  
2027 Iris Lane Ranch 20 miles  
Billings, MT 59102 east of Billings on  
(406) 254-1247 Squaw Creek Road  
(406) 697-4040 (cell) www.mcmurricattle.com  
(406) 254-1247 (fax) mcmurricattle@gmail.com



4551 State Rt. 514  
Glenmont, OH 44628  
Conard & Nancy Stitzlein (330) 378-3421  
Matt Stitzlein (330) 378-3487



**MOHICAN WEST**  
3100 Sportsman Park Road  
Laurel, MT 59044  
Phone/Fax (406) 633-2600  
Terry Powlesland (406) 633-2810



REAL WORLD - HONEST - GUARANTEED BULLS

Ace & Tara Diemert  
230 3700 Rd South  
Lothair, MT 59461  
406/432-3412  
ngrhereford@northerntel.net

BREEDING HEREFORD  
CATTLE SINCE 1945



## Steer In Trailer Sales



New & Used  
Stock & Horse Trailers  
Flatbeds - Mats -  
Cargo Trailers

Located at I-90 and Hwy. 287

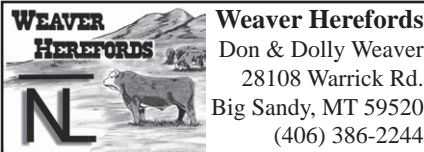
29 Bronco Drive (406) 285-4300  
Three Forks, MT 59752 Fax: (406) 285-4146  
www.steerin.com 1-877-335-5372



10069 River Road  
Bozeman, MT 59718  
Chuck & Kathy Kohlbeck  
Chuck, cell (406) 580-8255  
Garrett & Katelyn Knebel  
(406) 580-9565  
SHR@storeyherefordranch.com



HORNED P.O. Box 330055 POLLED  
Gold Creek, MT 59733  
BULLS & HEIFERS FOR SALE  
Richard & Shirley (406) 560-8122  
Bruce (406) 544-1536  
e-mail: bruce@thomasherefords.com  
www.thomasherefords.com



e-mail: dwhrfd@gmail.com  
www.weaverherefords.com

Heifers for sale private treaty in the fall.  
Annual bull sale the first Monday in March.



www.wichmanherefords.com

Registered bulls and females  
for sale by private treaty.  
Proven bloodlines, longevity, performance, functional  
justin@wichmanherefords.com

Justin & Carmen Wichman  
PO Box 29 • Moore, MT 59464  
Home: (406) 538-8997 • Cell: (406) 350-3123

## NEBRASKA

(continued on next page)

## BLUEBERRY HILL FARMS

POLLED HEREFORD CATTLE  
Doug Bolte,  
Manager

103 South Grandview Drive  
Norfolk, NE 68701

Cell Phone 402/640-4048  
email: dbolte@telebleep.com

www.blueberryhillscattle.com

Visitors Always Welcome!

## ESTERMANN HEREFORDS

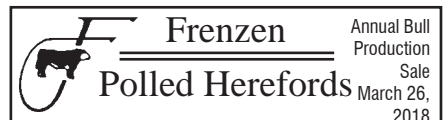
— Continuous Herd Since 1899 —  
32 years of Canadian breeding

Joe, Marlene & Dan Estermann  
35219 S. Somerset Rd.  
Wellfleet, NE 69170  
Phone: 308-963-4473  
E-mail: jester mann@nebnet.net

## Quality Cattle That Work



Lowell & Carol 48979 Nordic Road  
(402) 589-1347 Spencer, NE 68777



Females and Club Calves  
for sale at private treaty.

Galen, Gwen and Eric Frenzen  
50802 N. Edgewood Rd. • Fullerton, NE 68638  
Galen's Cell: (308) 550-0237 • Eric's Cell: (308) 550-0238  
www.frenzencattle.com

## GIBSON HEREFORDS

Line 1 Breeding

LARRY AND KAREN GIBSON  
35570 W. Gibson Rd.  
Wallace, NE 69169  
308-387-4580 ~ 308-530-6435  
kgibson@nebnet.net



## Show Heifers & Steers

Randy Helms Cody Helms  
73031 Rd 419 308-842-9071  
Holbrook, NE 68948  
308-493-5312

## HENKEL POLLED HEREFORDS

Pure Station  
Polled L1 Dominos

GENE ERIC  
402/729-5866 402/239-9838

56095 - 715 Rd. • Fairbury, NE 68352  
henkelhereford@hotmail.com

## HUWALDTS HEREFORDS

86423 558 Ave • Randolph, NE 68771

Ed & Marsha  
Home: 402/337-0784  
Cell: 402/360-4387

Angie  
Cell: 402/360-4796

Keith & Virginia  
402/337-0307

Email: huwed@live.com  
Website: www.edhuwaldt.com

Polled Hereford Bulls & Females For Sale at Private Treaty.  
Visitors Always Welcome!



Milk, Muscle Performance & Weight

Bulls and Females  
Always For Sale, Females  
that Visitors Always Welcome! that  
Perform Prolific + Disposition Produce

Jack & Bev Beeson 402/375-3404  
Wayne, NE 68787 cell: 402/375-9027

Feed Efficiency, Carcass,  
Moderate size, High gain  
Documented proof

## KEG HEREFORD RANCH

Ken & Marilyn Stephens  
39753 906th Rd., Valentine, NE 69201  
402-376-1267

## LARSEN'S POLLED HEREFORDS

CATTLE FOR BOTH PUREBRED  
AND COMMERCIAL PRODUCERS

Larry Larsen  
2252 CR 25  
Decatur, NE 68020  
402-687-2532

Selling at  
Shamrock Livestock  
in O'Neill  
April 13, 2017

## LINTON POLLED HEREFORDS

Art & Jean Linton  
77414 Hwy 183  
Miller, NE 68858  
Home: (308) 457-1127  
Cell: (308) 293-5816  
ajlinton@frontiernet.net

www.lintonpolledherefords.com

(continued from previous page)

## NEBRASKA

**MELCHER HEREFORDS, INC.****For Sale**

Hereford Bulls • January 27, 2018  
Dehorned commercial heifers for sale now  
175 Hereford heifers bred Angus  
(Carter Wind Star 218)  
90 red baldy heifers bred Red Angus (Conquest)

Don: 402-336-7194 • Kevin: 402-340-6189  
86287 Voyager Rd., Page, NE 68766

**MONAHAN  
CATTLE  
COMPANY**

Brand of Quality  
Herefords

P.O. Box 306 • Hyannis, NE 69305

James (308) 458-8019  
Bryan (308) 458-8021  
Bob (308) 458-8024

**NHA**  
NEBRASKA HEREFORD ASSOCIATION  
Sheri Wieden • Executive Director  
402-520-2296 • sheriwieden@gmail.com  
13287 East B-Line Road  
Blue Springs, NE 68318

**Ridder  
Hereford Ranch**

John & Mary Ridder  
Callaway, Nebraska

308/836-4430

mailbag@RidderRanch.com  
www.ridderranch.com

• Sale first Thursday in February •

**SCHUTTE &  
SONS**

1417 Road 2100  
Guide Rock, NE 68942-8099  
Ron Schutte  
402-756-3462 • 402-746-4378 cell  
rnschutte@gtmc.net  
www.gtmc.net/schutte

**Schroer Herefords**

Lavern Schroer Family  
2924 Road P ~ Nelson, NE 68961  
402-756-7834  
cell ~ 402-879-8056

Line One Herefords.  
Bulls and females for sale by private treaty.  
Cattle bred up, not fed up!



Thank you  
for attending  
the  
Nebraska  
Hereford  
Tour

**STEWART HEREFORD RANCH**

Jay and Kaye Stewart  
45717 875th Rd  
Newport, NE 68759

Phone: (402) 244-5457  
Cell: (402) 760-0961

**TEGTMEIER  
POLLED HEREFORDS**

58th Annual Sale March 2018  
71556 609th Ave.  
Burchard, NE 68323  
Russ: (402) 865-5805  
www.tegtmeierpolledherefords.com



Scott & Judy McGee 1900 G Street  
Blake McGee Fairbury, NE 68352  
Melissa & Brandon Buehler Scott's Cell: 402-300-2659  
Darci & Mick Pesek www.valleycreekranch.net

**VAN NEWKIRK  
HEREFORDS**

Quality Herefords Since 1892

Sale: January 15, 2018

☆ Joe Van Newkirk  
Oshkosh, NE 69154  
Phone: 308/778-6049

www.vannewkirkherefords.com

**Vin~Mar  
Cattle Company**

Owners: Vince, Mary, Ryan & Bryson Bickel ~ Jerry & Suzy Bottorff

Contact Vince at 308-282-0416 or Cell: 308-360-0336

2821 630th Rd  
Gordon, NE 69343

www.vinmarcattle.net  
Email: vmickel@gpcom.net

Registered Black Angus & Hereford  
Visitors Welcome Anytime!

## OHIO

**Videoing, video sales, online sales and sale clerking.**

*Buckeye*  
Hereford Association

Lisa Finnegan Keets, secretary  
440-320-6193  
ohioherefordlady@yahoo.com

Sale • March 2017 • Columbus, OH  
www.BuckeyeHerefords.com

*The* **Livestock** *Link*  
Livestock Videoing • Video Sales  
• Bid-by-Click Online Sales

THE BEST IN LIVESTOCK VIDEO PRESENTATION

Contact us if you have questions.

Marc Hotchkiss • marc@thelivestocklink.com

Phil Eggers • phil@thelivestocklink.com

Aaron Friedt, Online Sales

aaron@thelivestocklink.com

13823 Beaver Creek Place, Reva, SD 57651

www.thelivestocklink.com

## OREGON



Mike & Carol Allison  
70641 Kunze Lane • Boardman, OR 97818  
(541) 571-7139  
(541) 571-7313



David and Lynda Bird  
Phone: (541) 742-5436  
E-mail: bird@pinetel.com  
45863 Crow Rd.  
Halfway, Oregon 97834

**Chandler Herefords Inc.**

Wide, Thick, Long, Correct, Beautiful, Balanced Herefords  
127 Years in the business

541-523-2166

George

541-403-0125

Duane

541-403-0124

17578 Chandler Lane  
Baker City, OR 97814

www.chandlerherefords.com

E-mail: chandlerhereford1889@yahoo.com

**HARRELL  
HEREFORD RANCH**

42590 SALMON CREEK ROAD  
BAKER CITY, OR 97814

Bob Harrell, Jr.  
541/523-4322

Don Schafer  
541/403-0008

Registered Hereford Cattle and Quarter Horses  
ANNUAL SALE FIRST MONDAY IN MARCH

## OKLAHOMA



2211 S. 29th Co. Rd. Blackwell, OK 74631

Melvin Young  
Herdsmen  
580-761-9257

Nancy Bowling  
580-362-5026  
nkbowling@yahoo.com

**DAY HEREFORDS**

Hazlett-Turner Ranch Bloodlines  
Disposition & Thickness Bred

"Located in the heart of the Old Hereford Heaven"  
next ranch north of the famed former Turner Ranch on Hwy 1

Mr. & Mrs. Richard C. Day & Family  
3284 St Hwy 1 W • Roff, OK 74865  
580-456-7567

**Lents  
Anxiety 4th Herefords**

Thick, substantive & efficient!

J.H. "Jim" Lents

25398 SW Coombs Rd  
Indianapolis, OK 73552

Home 580-246-3560

Cell 580-704-3560  
jhlents@sirinet.net



(continued from page 32)

In 1954 Lester married Kathleen Carlson. She grew up on a farm south of Hector, MN. Her Carlson grandparents were Swedish immigrants who met each other while working in the Spencer, IA area. They purchased a farm south of Hector in 1897. Kathleen's father Anton, was the second of seven children. His mother died in 1908 and he had to quit school after the fourth grade to help care for the children and the farm. He married Opal Whiteman in 1929 and they became the parents of Kathleen and Marilyn. They lived at home with his father and brother until 1938 when his brother got married. Anton and Opal purchased a farm just west of the home farm where they raised dairy cows, hogs and chickens. He was also a gifted gardener and had All-American gladiolas. In 1982 two of his cultivars, Spic and Span and King David were inducted into the International Gladiolus Hall of Fame.

Lester and Kathleen became the parents of four children, John, Carla, Laurie and Mary. They also began building their own herd of cows and increasing their role in the farming operation. Af-

ter Mary and Emmet Klucas passed away in the early 1960s, Lester and Kathleen purchased the farm.

Son John graduated from the University of Minnesota with a degree in Animal Science. In 1979 he purchased his grandfather Anton Carlson's farm.

Carla graduated from the U of Minn. with a degree in Ag Journalism, married Ron Greenwood and lives in Canton, SD. She works for Merrill Lynch. They have two children. Laurie also got a degree from U of Minn. and is married to Joe Schroeder. They live north of Buffalo, MN where they own and operate Woods Edge Apples. She also is a lay minister for the United Methodist Church in Buffalo. They have three children. Mary is another U of Minn. grad with a degree in Ag Business. She is married to Gary Chicos and they have two daughters. They have a hog farm south of Alden, MN. She recently opened a gift, antique and collectible store in Alden.

Back to the cattle story. Lester purchased a scale and began collecting weaning weights on calves in 1960 and when the Total Performance Records (TPR) program was established the

AHA a couple years later he was one of the first to enroll. Yearling weights were added to the data within a couple years, followed by birth weights in 1979 and ultrasound carcass data in 2000. DNA testing has recently been implemented and is becoming an important part of the performance testing program. The animal breeding principle that you can't improve a trait if you don't measure it, has proved to be true. Steady improvement in all measured traits has been achieved. The performance records have also proved useful in determining when an optimum level of performance has been attained and finding genetics to maintain that level of performance. In recent years, linebreeding and inbreeding to top individuals has been employed carefully and where appropriate to build the predictability of the cattle. Outside sires have been added to the program to add specific traits while broadening the herd's genetic base.

The Schafers have used a lot of different Hereford bloodlines over the past 100 years: Anxiety 4th, Zato Heir, Battle Intense and Real Prince were some of the early influences. In the 1960s

they used some Mischief, Husker Mischief and Real Domino breeding. In the 1970s Western Domino, Evan Mischief and Canadian genetics were used to improve performance. More Canadian genetics were added in the 1980s to improve muscling and performance and moderate frame. Additional Canadian lines and Mark Donald bloodlines with some Line One influence were used in the 1990s. Later polled genetics were added and this program continues today. "We have followed the pattern of Oxleys and others who have named the blend of Mark Donald and Line One genetics Mark Dominos. The Canadian influence is still present but not as prevalent as it once was. We have continued to bring in sons of popular, high performance polled bulls as we seek to increase the frequency of the polled gene in our cattle," says Lester.

In recent years, we have increased use of linebreeding to build predictability in our cattle. We also have used many of the newer technologies to learn as much as we can about the genetic merits of each individual animal.

— From Schafer's 100th Anniversary Booklet

## NORTH DAKOTA

### Behm Polled Herefords

Larry, Aneica,  
Lindsey, Nicole and Logan Behm  
5944 Hwy. 1806  
Beulah, ND 58523  
701-873-2646  
e-mail: albehm@westriv.com



### BOEHNKE HEREFORD RANCH

Registered Herefords Since 1946

Unpampered • Functional • Sound  
Cattle for Sale at All Times

8424 4th Ave N.E.  
Kramer, ND 58748  
Jeff 701-359-4450 • Jared 701-201-0445  
e-mail: jboehnke@utma.com

### CARTER'S / PENNER POLLED HEREFORDS / LAND & CATTLE



Annual Bull Sale  
at the farm in Rocklake, ND  
1st Saturday in February

Jimmy Carter Jay & Malynda Penner  
P.O. Box 55 28074 440th Ave  
Rocklake, ND 58365 Freeman, SD 57029  
701-266-5575 605-929-7314  
mrs.penner@hotmail.com

### DIAMOND R HEREFORDS

Randy & Julie Lemm Family  
623 166th Ave. SE  
Hillsboro, ND 58045  
(701) 636-5465  
rdlemm@yahoo.com

### Merlin & Eunice Fornes

Quality grass-raised  
Polled Herefords



12169 56th St. SE  
Kathryn, ND 58049  
(701) 924-8360

### FRIEDT HEREFORDS

Production Sale Feb. 14, 2018  
& Private Treaty

Gary, Kirsten & Aaron  
8733 55th St. SW • Mott, ND 58646  
701/824-2300 • Gary's cell: 701/290-7231  
Megan & Dusty Dukart 701/290-7230  
Lindsey & Drew Courtney  
E-mail: gfriedt@hotmail.com  
Website: www.friedtherefords.com

### HELBLING HEREFORDS

Registered and commercial.  
Bulls and females for sale any time.  
— Private Treaty —

4785 Co. Rd. 83 • Mandan, ND 58554

Jim Fred Wayne  
701-663-7123 701-663-0137 701-471-4391

E-mail: helbling95@msn.com

### HUSO & SONS HEREFORDS

Bred For Better Beef™  
Jim Huso

701.326.4278 or 701.326.4176 (evenings)  
11922 17th St. NE Aneta, ND 58212  
www.husoandsons.com

### MIDWAY POLLED HEREFORDS

7480 26th St.  
Sheyenne, ND 58374

Doug & Ann: 701/996-3111  
Bill, Karen, Katie & Whitney:  
701/996-3300  
midwayph@gondtc.com  
Herdsman: Jake Burkhardtsmeier  
Visitors Always Welcome

### MRNAK HEREFORD RANCH

ANNUAL SALE SALE IN  
Feb. 11, 2018 BOWMAN, ND

14503 91st St. SW • Bowman, ND 58623  
Marlene 701/574-3124  
Wayne, Jill & Robyn 701/574-3172  
Terry & Andy 701/574-3193  
Brent & Jenna 701-206-0604  
www.mrnakherefords.com

### NORTH DAKOTA HEREFORD ASSN.



Joana Friesz  
Sec/Treas.

PO Box 67  
New Salem, ND 58563  
701/843-8750 • 701/400-8744 cell  
701/843-8744 work  
joana@northlandinsuranceagency.com



### OLSON Hereford Ranch

Carl, Lindsay, Casey, Dru & Stetson Olson  
16068 24th St SE • Argusville, ND 58005  
ranch: 701/484-5779 • cell: 701/361-0684  
Ed & Jeanne Olson • 701/238-3601

Red Power Bull Sale - Feb. 15, 2018  
www.olsonredpower.com  
E-mail: olsoncandc@aol.com

### PELTON POLLED HEREFORDS



We produce Polled Herefords  
for the Commercial Cowman

Craig 40 93rd Ave. NW  
Kayla & Kain Halliday, ND 58636  
cell: 701-260-0058 • 701-548-8243  
craigp@ndgateway.com

### North Star Classic Hereford Show & Sale

December 2, 2017  
Valley City, ND

Plus NDHA Annual Meeting and Banquet

Contact Joana Friesz for more info.:  
701/843-8750 • 701/400-8744 cell  
701/843-8744 work  
joana@northlandinsuranceagency.com

### Stroh HEREFORD RANCH

Over 50 years of Registered Herefords

TONY & MIKE STROH  
10550 Hwy. 200 Killdeer, ND 58640  
701/764-5217 701/573-4373

Annual Sale Feb. 1, 2018

### Winter Ranch

Quality Polled Hereford Cattle  
1990 10th St. NE  
Goodrich, ND 58444

Jason & Linda • 701-884-2424  
Kevin & Julie Bender • 701-884-2417



Visitors Always Welcome  
Stop Anytime

# SOUTH DAKOTA

... more South Dakota on next page

**Jim BAKER**  
  
**HEREFORD RANCH**  
 P.O. Box 2769 • Rapid City, SD 57709  
**BULL SALE: Feb. 10, 2018**  
 Jim 605/923-2925 • 381-9519 cell  
 E-mail: jbakereherefords@gmail.com  
 www.bakereherefords.com

**JZ Bar JZ Ranches**  
 Homozygous Polled Herefords  
 Homozygous Polled Limousin  
 18542 326th Ave.  
 Holabird, SD 57540  
**Annual Production Sale**  
**Tuesday, Feb. 20, 2018**  
 Don/Peg/Seth Zilverberg  
 605/852-2966  
 web site: www.barjz.com  
 email: cattle@barjz.com


**DVORAK HEREFORDS**  
  
**LAKE ANDES, SD**  
 Richard & Darlene  
 Jeff & Tiphany 605/384-3914 Cell: 491-2068  
 Boyd & Jenni 605/487-7090 Cell: 491-7090

**EGGERS Southview Farm**  
 Tim & Philip Eggers  
 25748 S. 476th Ave.  
 Sioux Falls, SD 57104  
 (605) 351-5438  
 ESFherefords@aol.com  
**1-29 Bull Run**  
 Bull Sale March 10, 2018  
 Female & Frozen Edition Sept. 2017


**FAWCETT'S ELM CREEK RANCH**  
 21115 344th Ave. • Ree Heights, SD 57371  
 Robert Fawcett  
 Keith, Cheryl, Matt & Erin: 605/870-0161  
 Daniel & Family: 605/870-6172  
 Weston & Kristin Kusser: 605/478-0077  
 www.fawcettselmcreekranch.com  
**Bull & Female Sale • February 12, 2018**

**FINK**  
  
 Mike & Marvin Fink  
 P.O. Box 184 • 43610 SD Hwy 42  
 Bridgewater, SD 57319  
 Phone: (605) 729-2515  
 Cell Phone: (605) 999-2075  
 www.sites.google.com/site/finkpolledherefords  
 E-mail: swamprat@unitelsd.com


**FREDERICKSON RANCH**  
  
**Pyramid Beef Bull Sale**  
 First Saturday in December at the ranch  
 Mark & Mary Kay  
 Frederickson  
 19975 Bear Ridge Rd.  
 Spearfish, SD 57783  
 605/642-2139  
 320/808-6691 (cell)  
 Nate & Jayna  
 Frederickson  
 605/254-4872 (cell)  
 Shawn & Sarah  
 Tatman  
 307/673-4381

**Gant Polled Herefords**  
  
 Box 15 • Geddes, South Dakota  
**Mark • Phone (605) 337-2340**  
**Dennis • Phone (605) 337-2564**  
 2 year-old Angus & Polled Hereford  
**BULL SALE**  
**February 23, 2018**  
 Geddes, SD

**Hanson's Polled Herefords**  
 Sherry Hanson  
 15477 409th Ave.  
 Conde, SD 57434  
 Cell: 605-382-7477  
 hanson\_herefords@hotmail.com

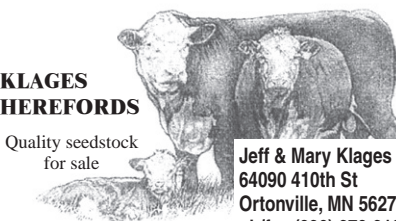
**HILLSVIEW FARMS**  
  
 Polled Hereford bulls  
 for sale private treaty Feb. 10, 2018  
 at the farm  
 Darwin & Cindy Aman  
 Andrew — Sam — Alex  
 32824 119th St. • Eureka, SD 57437  
 (605) 284-2721  
 dcaman@valleytel.net

**Hoffman HEREFORDS**  
  
 Colin & Mary Beth Hoffman  
 (605) 439-3623  
**11341 357 Ave.**  
**Leola, SD 57456-7105**  
 Visit our website at  
 www.hoffmanherefords.com

**HORA HEREFORDS**  
  
 Suppliers of Show Cattle  
 Steers & Heifers  
 Jim & Karla Hora  
 27718 423rd Ave. • Parkston, SD 57366  
 (605) 928-3008 • Cell (605) 770-3008  
 E-mail: jhora@santel.net

**Ad deadline for the January issue of Hereford America is December 5.**

**K&B HEREFORDS & ANGUS**  
 17309 322nd Ave.  
 Onida, SD 57564  
 E-mail: kbherefords@venturecomm.net  
 Kirk: 605-973-2351 Cell: 769-9991  
 Brooke: 605-765-2248 Cell: 769-9992  
 Ken & Bonnie: 605-765-2335 Cell: 769-9999


**KLAGES HEREFORDS**  
  
 Quality seedstock for sale  
 Jeff & Mary Klages  
 64090 410th St  
 Ortonville, MN 56278  
 ph/fax (320) 273-2163  
 jmkklages@fedtelirect.net


**Jerry Knippling and Sons**  
 Registered and Commercial Herefords  
**Internet bull sale on KnipplingCattle.com**  
 Gann Valley, SD 57341  
 Randy 605/680-3185  
 Garin 605/680-4637

**LEDDY**  
 Horned • Polled  
**HEREFORDS and ANGUS**  
 Using the Best A.I. Sires Available.  
 Bulls, Females and Club Calves For Sale.  
 GENE 605/432-5182  
 Cell: 605/530-1659  
 WADE & LORI REBECCA & ALLISON  
 605/432-9054  
 Cell: 949-0630  
 47296 153rd Street • Twin Brooks, SD 57269  
 — Complete Dispersion September 30 —  
 e-mail: willedy@tnics.com

**Nuhsbaumer Herefords**  
 Steve, Amy & Casey  
 Zell, SD  
 (605) 450-0550  
 Bulls for sale private treaty...  
 please call for more information.  
 www.nuhsbaumerherefords.com  
 Visitors Welcome e-mail: sanuhs@nrctv.com  
 Directions: from Zell, 3 m. West on Hwy 212, 5 1/2 South

**OLLERICH BROTHERS HEREFORDS**  
 Over 45 years in the Registered Hereford Business  
 29188 303rd Ave  
 Clearfield, SD 57580  
 (605) 557-3246  
 www.ollerichbrothersherefords.com  
**Bulls For Sale Privately**  
**JEROME JAMES**

**Home Raised First Cross Black Baldy Replacement Heifer Calves**  
  
**Top End Sell at Philip Livestock Auction the end of April**  
 Bill Parsons  
 19955 228th Ave.  
 Milesville, SD 57553  
 605-544-3247

**RCR Polled Herefords**  
  
 — Visitors Always Welcome —  
 James & Bonnie  
 Lake Andes, SD • James 605/481-1936  
 Michael & Wendy  
 Andrew • Tim • Nick • Makayla  
 Colton, SD • Michael 605/351-5123  
 Tim 605/481-8498 • Nick 605/553-6050

**RAUSCH HEREFORDS**  
 Hoven, SD 57450  
 Visitors Welcome  
**• Sale Third Mon. in February •**  
 Vern • Jerry • Shannon • Joel  
**Phone 1-800-6HEREFORD or 605/948-2146**  
 2 miles west of Hoven on Hwy. 20  
 e-mail: rauschherf@rauschherefords.com  
 Website: www.RauschHerefords.com

**Ravine Creek Ranch**  
  
 The Bischoffs  
 Huron, SD 57350  
**SALE MARCH 3, 2018**  
**• 605/352-5530 •**  
 E-mail: ravinecr@santel.net

**Schuetz Land & Cattle Co., Inc.**  
  
 Raising quality commercial Hereford cattle for over 60 years.  
 Jim & Judy Schuetz 605-852-2789  
 Jerry & Kathy Schuetz 605-852-2046  
 PO Box 266 slc@venturecomm.net  
 Highmore, SD 57345 www.slc-herefords.com

**Simon Herefords**  
 Low maintenance, feed efficient Hereford cattle  
 Brian & Colleen Simon  
 Seneca, SD 57473  
 Home: 605/436-6725  
 Cell: 605/765-4564  
 bcsimon@venturecomm.net  
 www.simonherefords.com  
**Selling bulls & heifers private treaty.**

**South Dakota Hereford Association**  
 Mark and Jeanne Johnson, managers  
 South Dakota Hereford Association  
 46473 289th St.  
 Centerville, SD 57014  
 Jeanne.Johnson@yahoo.com  
 www.southdakotaherefords.org

**Ad deadline for the 70th South Dakota 70th Hereford Directory is November 15th.**  
 Contact Jill Hotchkiss  
 jbh@herefordamerica.com  
 605/866-4495

**THORSON HEREFORDS**  
  
**0 22**  
 Doug and Nancy Thorson  
 22750 Cottonwood Road  
 Quinn, SD 57775  
 605-859-3538  
 we02much@gwtc.net  
 www.thorsonherefords.com  
**Visitors welcome at the Ranch**

... continued

## SOUTH DAKOTA

## Tricky's Herefords

Dick & Betty Wettlaufer  
(605) 485-2648 • Cell: (605) 270-3465  
44132 234th St. • Winfred, SD 57076-7318

E-mail: [rwettlaufer@triotel.net](mailto:rwettlaufer@triotel.net)  
[www.TrickysHerefords.com](http://www.TrickysHerefords.com)

**BULL SALE • March 2018 • Howard, SD**

## Wagner Herefords

Reese & Elly Jo Wagner  
39365 182nd St.  
Redfield, SD 57469  
Reese 605-450-1085  
Elly Jo 605-450-9790  
[wagnerherefords.com](http://wagnerherefords.com)

**Bull Sale • Monday, March 19, 2018**

## POLLED HEREFORDS

Since 1947

*Bulls and Heifers for sale at the farm*

## DEL & RUTH WOOD WOODCREST FARMS

Cresbard, SD 57435  
(605) 324-3289

## ZENS HEREFORDS

*Bulls, Heifers and Show Steers  
Private Treaty Sales*

**Harley, Matt & Mark Zens  
Canova, SD 57321**

Phone (605) 523-2655  
Matt (605) 310-5782 cell  
[hrzens@yahoo.com](mailto:hrzens@yahoo.com)  
[www.zensherefords.com](http://www.zensherefords.com)

## SERVICES

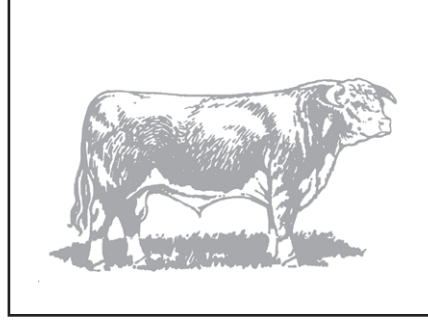
## A2Z PRINTING

PO Box 35 701-523-4656  
306 Hwy 12 W Ste C 888-768-4656  
Bowman, ND 58623 Fax 701-523-4756  
email: [a2zprint@ndsupernet.com](mailto:a2zprint@ndsupernet.com)

**American Live Stock**  
A MARKEL Insurance Company

**Cheri & Jim Gies**  
Cattle and Equine Insurance

19381 CR 74  
Eaton, CO 80651  
Tel/Fax (970) 454-3836  
Cell (970) 590-0500  
[cmgies@msn.com](mailto:cmgies@msn.com)



## El Molino Sawmill



P.O. Box 1106  
Alto, NM 88312  
Phone: 575/336-1237 • Cell: 575/808-0860  
Email: [elmolino@valornet.com](mailto:elmolino@valornet.com)  
[www.elmolinosawmill.com](http://www.elmolinosawmill.com)

BEN ROUDABUSH Ph. 605-996-9100  
Manager Fax 605-995-0611  
[broudabush@crinet.com](mailto:broudabush@crinet.com)

## Genex



### Dakota Sire Service

Semen Collection, Freezing, Shipping,  
Storage, Sire Housing & Conditioning

40275 - 257th Street Mitchell, SD 57301

## HANDEL MARKETING, LLC

Private Treaty Sales ♦ Ring Service ♦ Insurance

Order Buying and Selling Commercial &  
Registered Breeding Stock & Feeder Cattle

Art & Pat Handel 605/391-8233  
[handelhereford@aol.com](mailto:handelhereford@aol.com) 1501 Summit Blvd.  
[www.arthandelsattle.com](http://www.arthandelsattle.com) Rapid City, SD 57701

## HIGH PLAINS GENETICS, LLC



For All Your  
Equine & Bovine  
Reproductive Needs



(605) 787-4808

[www.high-plainsgenetics.com](http://www.high-plainsgenetics.com)

## HEREFORD America

[www.HerefordAmerica.com](http://www.HerefordAmerica.com)

For more information contact:

Jill Hotchkiss at 605/866-4495 • [jill@herefordamerica.com](mailto:jill@herefordamerica.com)

- 7 Issues per year
- Covering Hereford breeders throughout North America
- Advertising deadlines are the 5th of the preceding month



## Steer In Trailer Sales



New & Used  
Stock & Horse Trailers  
Flatbeds - Mats  
Cargo Trailers

Located at I-90 and Hwy. 287

29 Bronco Drive (406) 285-4300  
Three Forks, MT 59752 Fax: (406) 285-4146  
[www.steerin.com](http://www.steerin.com) 1-877-335-5372

## TEXAS

## Barber Ranch

Barber Ranch 806-235-3692  
Justin Barber 806-681-5528  
Brett Barber 806-681-2457  
Terri Barber 817-727-6107  
Jason Barber 817-718-5821  
Dale Barber 806-673-1965  
Mary Barber 806-930-6917

10175 F.M. 3138 • Channing, TX 79018  
[barberranch@wildblue.net](http://barberranch@wildblue.net) • [www.barberranch.com](http://www.barberranch.com)

Sale Date: Nov. 11, 2017  
noon • Circle M, Grand Saline, Texas



For more information contact:  
Dimitri Mataragas  
214-649-0071 cell  
David Caraway  
903-802-3373 cell  
P.O. Box 751 • 8027 F.M. 1616,  
Athens, TX 75751

[www.ironlakeranch.com](http://www.ironlakeranch.com)

## PPHF

"Prefix of Performance"

**PRAUSE POLLED HEREFORD FARMS**

1957 Morris Community Rd.  
Yoakum, TX 77995-5224

[www.prausepolledherefords.com](http://www.prausepolledherefords.com)

**Leslie & Gay  
Prause**

361-741-6495  
361-293-4213

**Robert, Lorna  
& Kaci Herman**

361-293-5324  
361-293-1533

## Still River Ranch

Marble Up!

Larry Woodson  
214-491-7017

[larrywoodson@gmail.com](mailto:larrywoodson@gmail.com)  
[www.stillriverranch.com](http://www.stillriverranch.com)



## TRIPLE L RANCH

BOBBY & JARED LIDE  
714 FM 1366 • MEXIA, TX 76667  
(P) 254.739.2911 • (CELL) 254.625.3800  
JARED (CELL) 254.625.3806

[www.triplelblackherefords.com](http://www.triplelblackherefords.com)



## Whitehead Herefords

Proven Bloodlines...Predictable Results!  
[www.whiteheadherefords.com](http://www.whiteheadherefords.com)

Wendee Whitehead  
512-970-1595  
McDade, Texas central  
Rusk, Texas East  
email: [drwendee@yahoo.com](mailto:drwendee@yahoo.com)



## UTAH

### Ekker Herefords

Jim Ekker 435/839-3454 Cell # 435/840-2699



1004 Ekker Lane • Vernon, UT 84080  
~ Bulls & Females for Sale ~

**Breeding Quality  
Herefords Since 1985**

*Line One  
performance bred Herefords*  
www.johansenherefords.com

Castle Dale, UT  
Jonathan 435-650-8466  
Craig 435-820-8490



## WASHINGTON



### CX Ranch

Bill and Terrilie Cox  
688 Pataha St.  
Pomeroy, WA 99347  
509-566-7050 cell  
cxranch@live.com

Dick & Karen Yoder  
8941 Glendale Rd.  
Custer, WA 98240  
(360) 354-2945

Dale & Tammy Yoder  
Katie & Clark  
9279 Weidkamp Road  
Lynden, WA 98264  
(360) 354-6605

**Yoricka  
Farm, Inc.**  
Registered Herefords

email: YorickaFm@aol.com

## WISCONSIN



**KEVIN L. STORK  
KODY L. STORK**  
626 EAST THIRD  
NEW RICHMOND, WI 54017

(715) 381-3770 Kevin  
(715) 220-0021 Kody  
(715) 246-2580 fax

E-mail: kstork@presenter.com

### LIETZAU HEREFORD FARM

Harold & Connie Lietzau  
Tammy, Dan, Kiara & Austin  
Troy, Michelle, Jaydon, Devon & Jocelyn  
Taylor & Ty  
7477 Iband Ave. • Sparta, WI 54656  
Cell 608/633-2875



**MARVIN ESPENSCHIED FAMILY**

(608) 543-3778 12044 State Hwy 78  
Fax: (608) 543-3824 Argyle, WI 53504  
Email: osf@mhtc.net

Thanks to our customers!

### WIRTH Herefords

NEW RICHMOND, WI

Gene & Cheryl Wirth  
(715) 247-5217

Lance Brent  
(715) 377-6876 (715) 760-1727  
www.wirthshowcattle.com

# HEREFORD America

www.HerefordAmerica.com

**7 Issues Per Year**  
• September through April •

For more information contact  
**Jill Hotchkiss at 605/866-4495**  
jill@herefordamerica.com

## WYOMING

### The Berry's

WHERE  
COWMEN  
BUY BULLS

**Bull Sale October 15, 2018**

Jay and Janice Berry  
3049 County Road 225  
Cheyenne, WY 82009  
(307) 634-5178

E-mail: jaberryherefords@msn.com  
www.WhereCowmenBuyBulls.com



**LARGENT  
and SONS**  
Hereford Cattle  
Since 1902

• Sale November 16, 2017 •

P.O. Box 66 • Kaycee, WY 82639  
(307) 738-2443 or (307) 267-3229  
www.largentandsons.com  
largentandsons@yahoo.com

### McClun's Lazy JM Ranch

Producing problem free  
Polled Herefords and Angus.

**SALE April 12, 2018**  
Private treaty sales any time.

Jim & Jerri McClun  
1929 Road 60 • Veteran, WY 82243  
Ph. 307-837-2524

Jeff & Kari McClun  
1930 Road 60 • Veteran, WY 82243  
Ph. 307-837-2554 • jkmcclun@wyomail.com

### MIDDLESWARTH RANCH

Registered Herefords  
• Torrington, WY •

Jay, Marsha and Jessica  
307.532.5427

6MBulls@hughes.net  
www.middleswarthherefords.com

### GEORGE OCHSNER RANCH INC.

PRIVATE TREATY SALES OF  
HEREFORD AND ANGUS BULLS  
REGISTERED AND COMMERCIAL BRED HEIFERS  
**QUALITYBULLS.COM**

GEORGE & RUBY OCHSNER  
307/532-5892

E-MAIL: OCHSNERRANCH@GMAIL.COM

Blake & Rustin & Steve & Rod & Debbie  
Chrissy & Britte & Dixie & Ochsner  
Ochsner 307/575-2709 307/532-7191 307/532-2457  
307/532-3282

# The Livestock Link

Livestock Videoing • Video Sales  
• Bid-by-Click Online Sales

605/490-1513  
605/210-1956

### STICKS & STONES RANCH

• Gene & Cindy Stillahn and Family •  
Christopher, Amy and Trey

3902 County Road 203  
Cheyenne, WY 82007  
(307) 635-6716 • cell (307) 421-1592  
E-mail: gcstick@mllect.com

### THE NED & JAN WARD QUALITY PROGRAM

...honest, efficient and predictable Polled Herefords.

Ned, Jan & Bell Ward  
247A Decker Road • Sheridan, WY 82801  
Phone and Fax 307/672-3248  
Ned (c) 307/751-8298 • Jan (c) 307/751-9470  
Email: njwardherefords@gmail.com  
www.NJWHerefords.com  
Annual BULL SALE in March  
Bulls • Females • Semen • Embryos

### S.E. West & Sons

• Herefords since 1949 •

Selling Private Treaty and at  
Black Hills Stock Show  
Nebraska Cattleman's Classic  
Bulls & Females • Club Calves

Lusk, Wyoming  
Brett 307/334-2546



Joel & Karri White

912 Fullerton Avenue  
Buffalo, WY 82834  
C: 307.217.0367 H: 307.684-7881  
whitecattlecompany@gmail.com

Bulls, Females, Embryos & Semen  
Available



Starts the  
second Saturday  
of August  
every year.

307/358-2398

wystatefair.com

wsf@netcommander.com

(Supported by Converse County Tourism.com)



Reg # 43714569 • Sire: CRR Catapult 322  
BW 0.4 • WW 49 • YW 79 • CHB 23



Reg # 43715412 • Sire: CRR Catapult 322  
BW 2.4 • WW 54 • YW 85 • CHB 26



Reg # 43719556 • Sire: UPS Domino 3027  
BW 2.8 • WW 61 • YW 108 • CHB 36

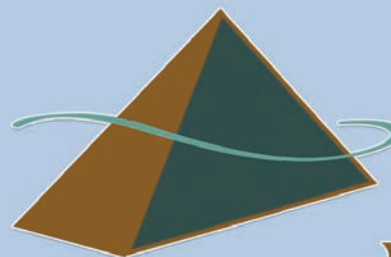


Reg # 43719566 • Sire: UPS Domino 3027  
BW 2.4 • WW 62 • YW 96 • CHB 35

**Frederickson**  
Where the philosophy is the program *Ranch*

**Mark:** (605) 642-2139 ~ **Nate:** (605) 254-4872

Mark, Mary Kay & Sarah Frederickson, Spearfish, SD  
Nate, Jayna, Teegen & Tiernan Frederickson, Spearfish, SD



# Pyramid *Beef*

*Selling* **160** REGISTERED ANGUS & HEREFORD  
COMING-2-YEAR-OLD BULLS

## Dec. 2, 2017

*New Location:* FREDERICKSON RANCH,  
10 Miles West of Spearfish, SD

*Genetics* you should **EXPECT**  
*Service* you **DESERVE.**



Also selling a **SELECT GROUP**  
of **BRED HEIFERS**  
by private treaty!

**www.PyramidBeef.net**